

BLOCK 5258
MODULES 12/22
CORNER RECORD

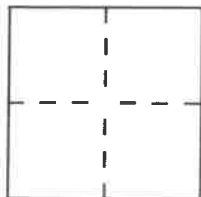
WM 40E

Document Number 97-200

City of UNINCORPORATED TERRITORY

County of ORANGE, California

Brief Legal Description TRACT NO. 15101, M.M. 726/9-14



CORNER TYPE

Government Corner ☐ Control ☒
Meander ☐ Property ☐
Rancho ☐ Other ☐
Date of Survey _____

COORDINATES
(Optional)

N. _____
E. _____
Zone _____ Datum _____
Elev. _____

Corner — Left as found ☐ Found and tagged ☐ Established ☒ Reestablished ☐ Rebuilt ☐

Identification and type of corner found: Evidence used to identify or procedure used to establish or reestablish the corner:

THE PURPOSE OF THIS CORNER RECORD IS TO PERPETUATE THE
CENTERLINE OF CASTLE TREE, MEADOWOOD, GREENVALE &
CLOVERDALE.

A description of the physical condition of the monument as found and as set or reset:

1.) SET SPIKE & WASHER STAMPED "LS 5557" AS NOTED.
2.) SET LEAD, TACK & TAG "LS 5557 TIE PT." AS NOTED.
3.) SET LEAD, TACK & TAG "LS 5557" AS NOTED.

SURVEYOR'S STATEMENT

This Corner Record was prepared by me or under my direction in conformance with
the Land Surveyors' Act on APRIL 10 1997.

Signed Jim Gill L.S. or R.C.E. Number 5557



COUNTY SURVEYOR'S STATEMENT

This Corner Record was received 4/22 1997 and examined

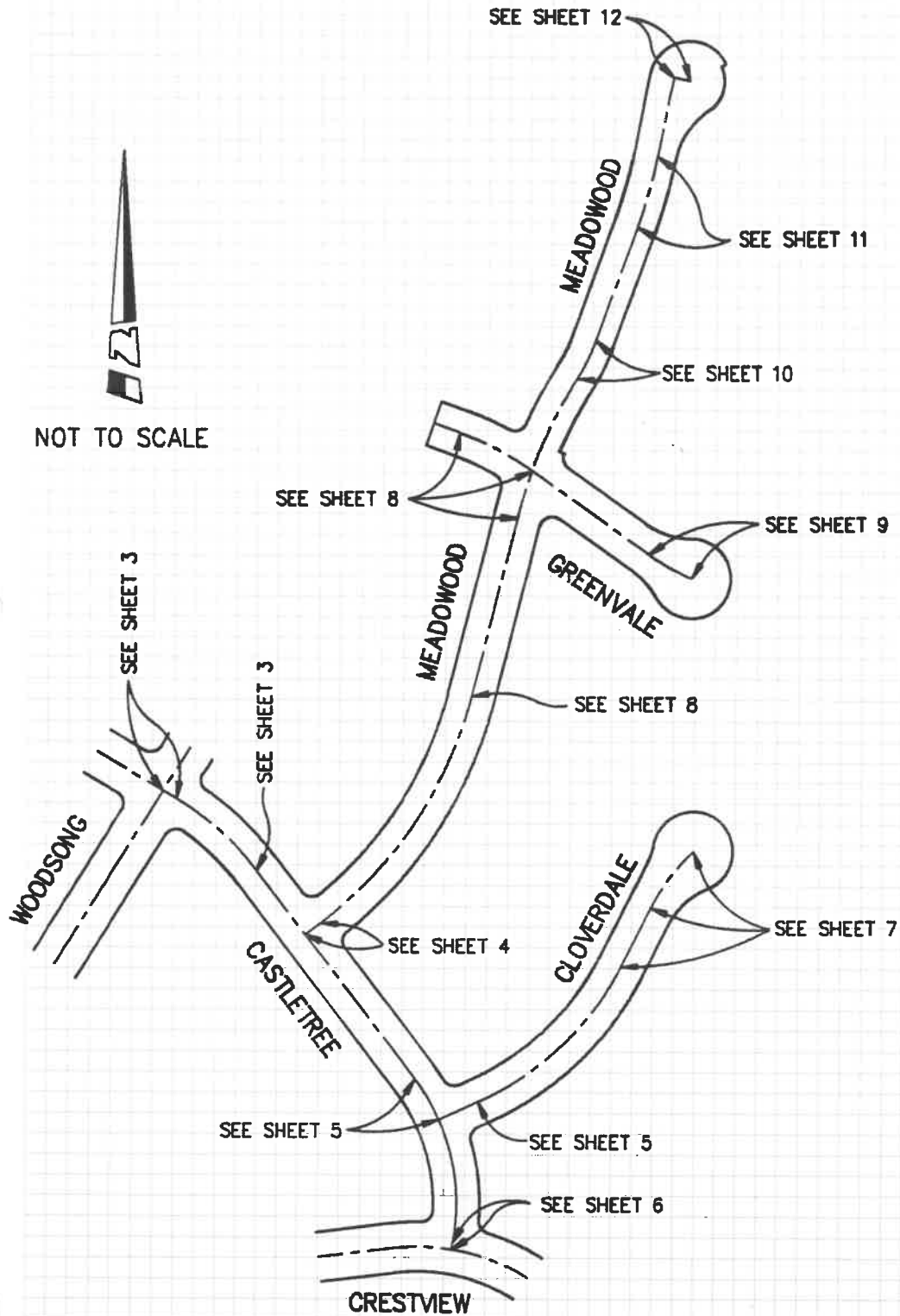
and filed May 30 1997.

Signed Michael B. Emmons Title Deputy



County Surveyor's Comment _____

Q TIES - TRACT NO. 15101
JAMES F. GILLEN, L.S. 5557
HUITT-ZOLLARS



INDEX MAP

Q TIES — TRACT NO. 15101

JAMES F. GILLEN, L.S. 5557

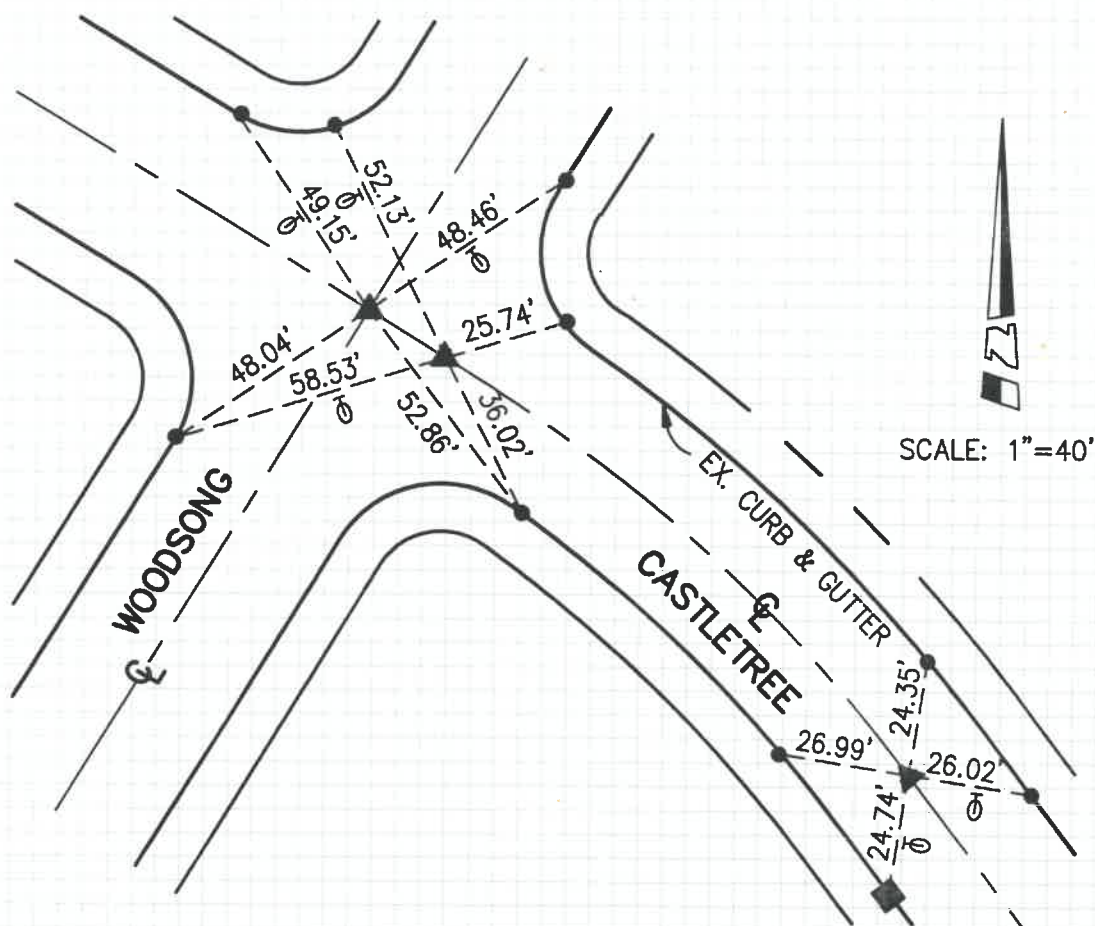
HUITT-ZOLLARS

PARTY:

JOHNSON
BRUSO

DATE OF SURVEY

MARCH 1997



- INDICATES FOUND LEAD, TACK & TAG
"LS 5557" PER TRACT NO. 15101, M.M. 726/9-14.
- ▲ INDICATES SET SPIKE AND WASHER
STAMPED "LS 5557".
- INDICATES SET LEAD, TACK AND TAG
"LS 5557 TIE PT." IN TOP OF CURB.
- ⊗ INDICATES TANGENT OVER TIES

SEE SHEET 4

CL TIES - TRACT NO. 15101

JAMES F. GILLEN, L.S. 5557

HUITT-ZOLLARS

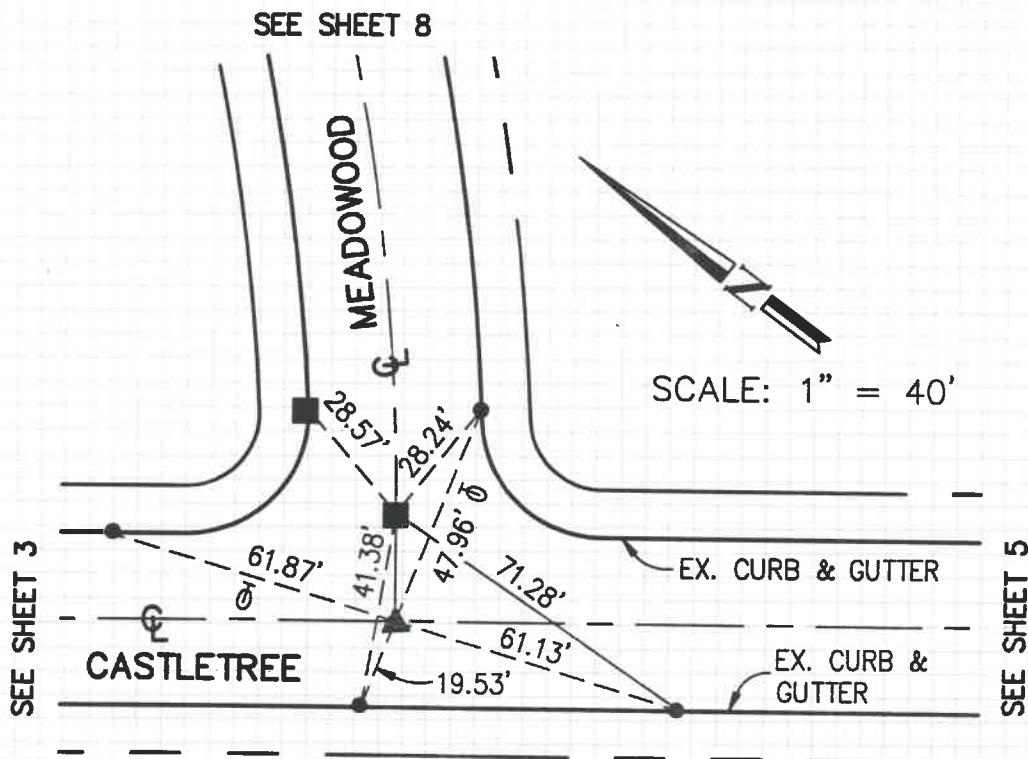
WILLIAMSON & SCHMIDT

PARTY:

JOHNSON
BRUSO

DATE OF SURVEY

MARCH 1997



- INDICATES FOUND LEAD, TACK & TAG
"LS 5557" PER TRACT NO. 15101, M.M. 726/9-14.
- ▲ INDICATES SET SPIKE AND WASHER
STAMPED "L.S.5557".
- INDICATES SET LEAD, TACK AND TAG
"LS 5557 TIE PT." IN TOP OF CURB.
- ⊘ INDICATES TANGENT OVER TIES

Q TIES - TRACT NO. 15101

JAMES F. GILLEN, L.S. 5557

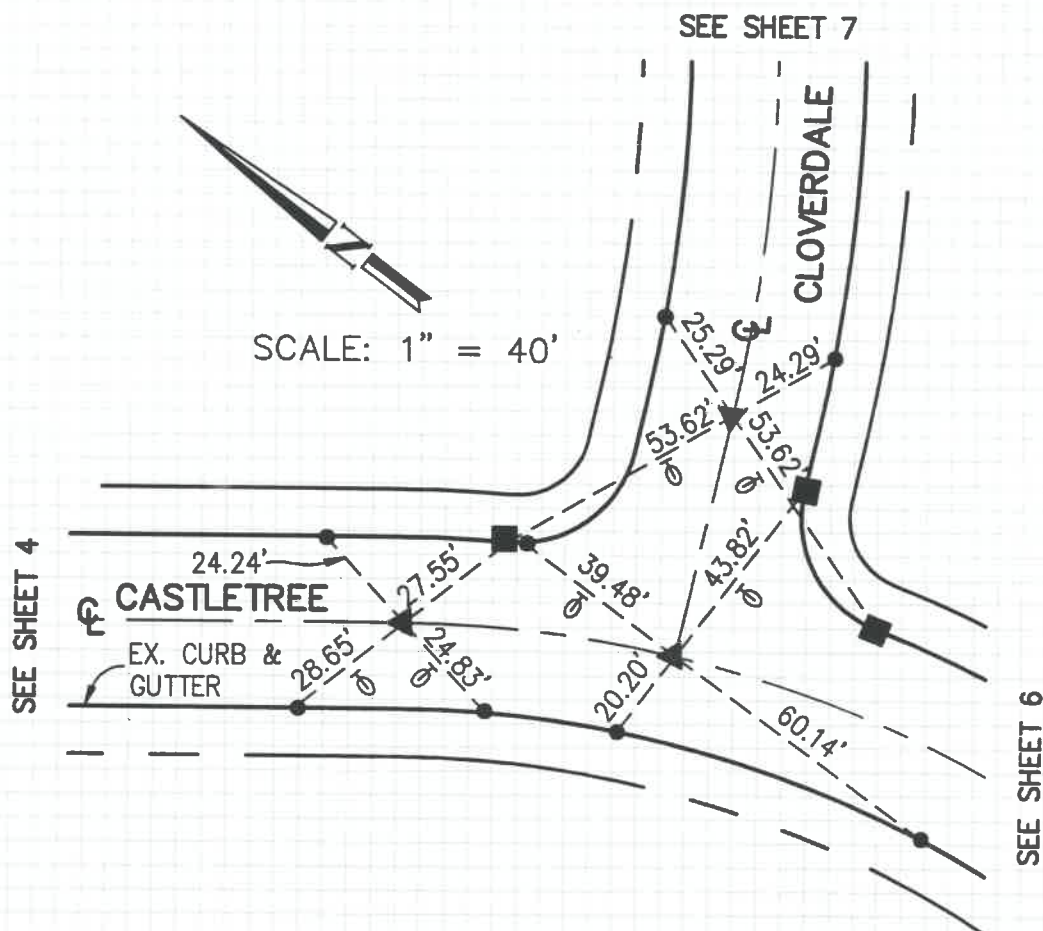
HUITT-ZOLLARS

PARTY:

JOHNSON
BRUSO

DATE OF SURVEY

MARCH 1997



- INDICATES FOUND LEAD, TACK & TAG
"LS 5557" PER TRACT NO. 15101, M.M. 726/9-14.
- ▲ INDICATES SET SPIKE AND WASHER
STAMPED "LS 5557".
- INDICATES SET LEAD, TACK AND TAG
"LS 5557 TIE PT." IN TOP OF CURB.
- ⊘ INDICATES TANGENT OVER TIES

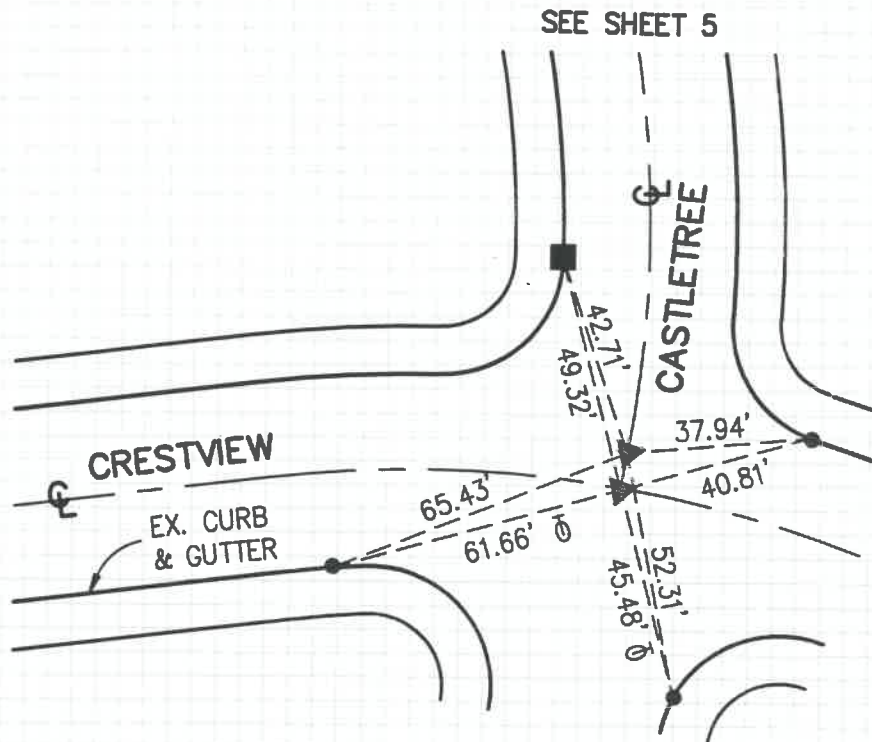
Q TIES - TRACT NO. 15101

JAMES F. GILLEN, L.S. 5557

HUITT-ZOLLARS

PARTY:
JOHNSON
BRUSO

DATE OF SURVEY
MARCH 1997



- INDICATES FOUND LEAD, TACK & TAG
"LS 5557" PER TRACT NO. 15101, M.M. 726/9-14.
- ▲ INDICATES SET SPIKE AND WASHER
STAMPED "LS 5557".
- INDICATES SET LEAD, TACK AND TAG
"LS 5557 TIE PT." IN TOP OF CURB.
- ⊙ INDICATES TANGENT OVER TIES

SHEET 6 OF 12

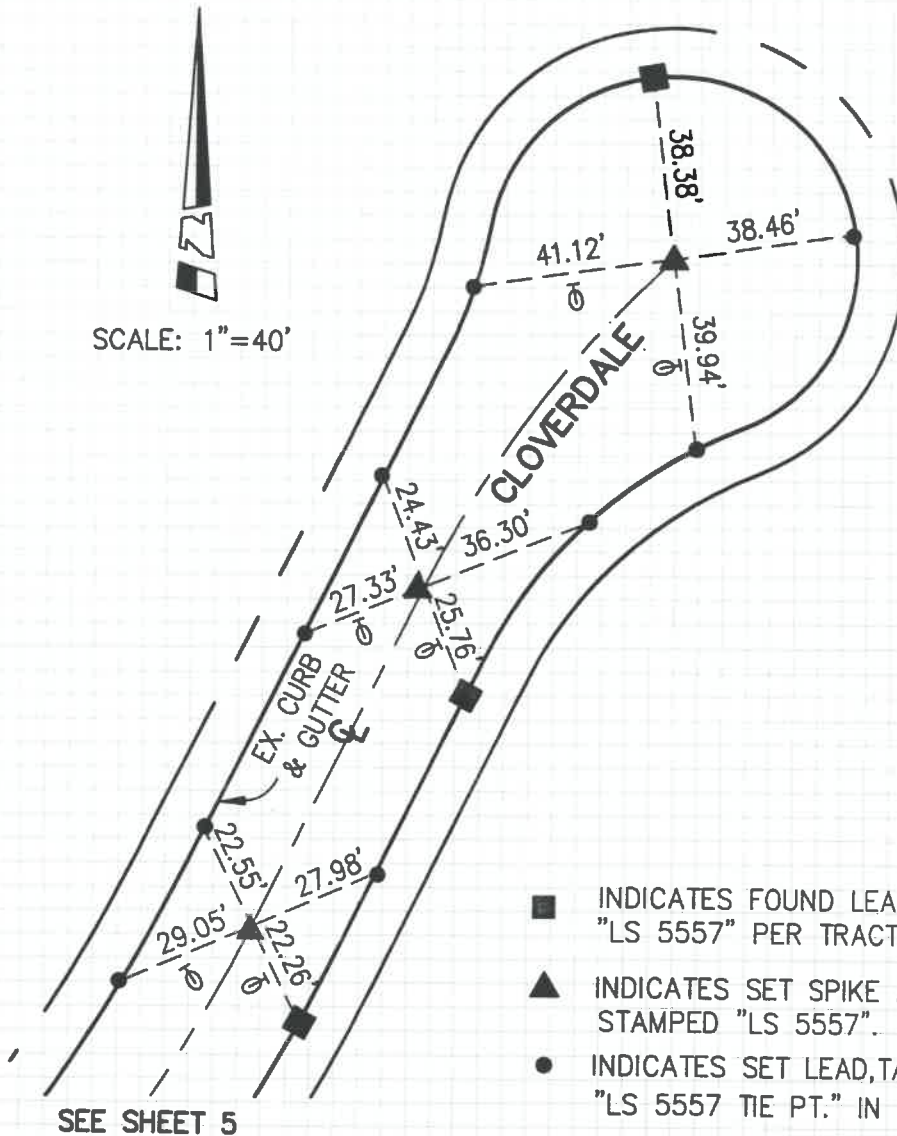
Q TIES - TRACT NO. 15101

JAMES F. GILLEN, L.S. 5557

HUITT-ZOLLARS

PARTY:
JOHNSON
BRUSO

DATE OF SURVEY
MARCH 1997



- INDICATES FOUND LEAD, TACK & TAG
"LS 5557" PER TRACT NO. 15101, M.M. 726/9-14.
- ▲ INDICATES SET SPIKE AND WASHER
STAMPED "LS 5557".
- INDICATES SET LEAD, TACK AND TAG
"LS 5557 TIE PT." IN TOP OF CURB.
- ⊙ INDICATES TANGENT OVER TIES

Q TIES - TRACT NO. 15101

JAMES F. GILLEN, L.S. 5557

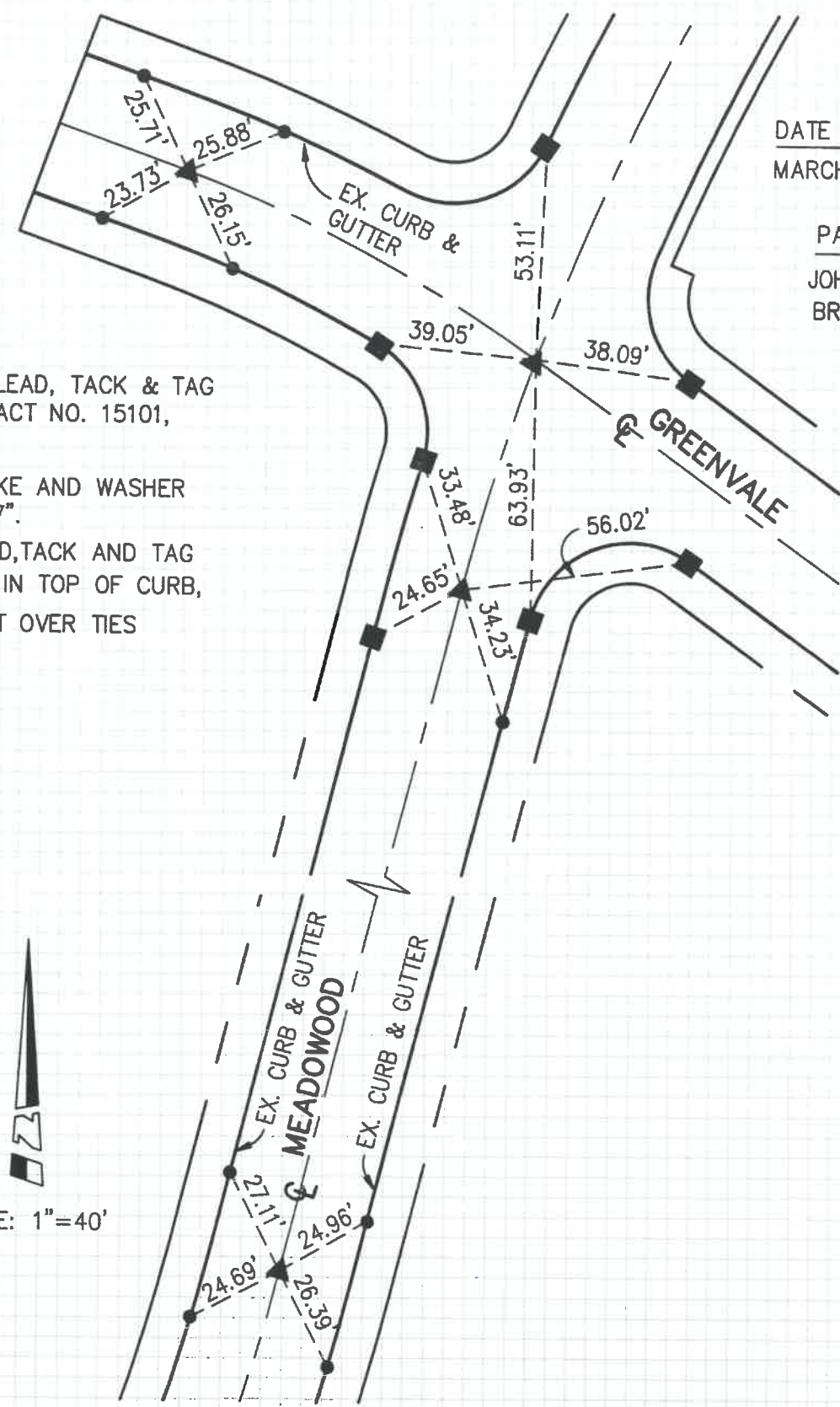
HUITT-ZOLLARS

SEE SHEET 10

DATE OF SURVEY
MARCH 1997

PARTY:
JOHNSON
BRUSO

- INDICATES FOUND LEAD, TACK & TAG "LS 5557" PER TRACT NO. 15101, M.M. 726/9-14.
- ▲ INDICATES SET SPIKE AND WASHER STAMPED "LS 5557".
- INDICATES SET LEAD, TACK AND TAG "LS 5557 TIE PT." IN TOP OF CURB,
- ⊕ INDICATES TANGENT OVER TIES



SCALE: 1"=40'

SEE SHEET 4

SHEET 8 OF 12

SURVEYED BY
CHAIN CALIB.DATE
TIES - TRACT NO. 15101

JAMES F. GILLEN, L.S. 5557

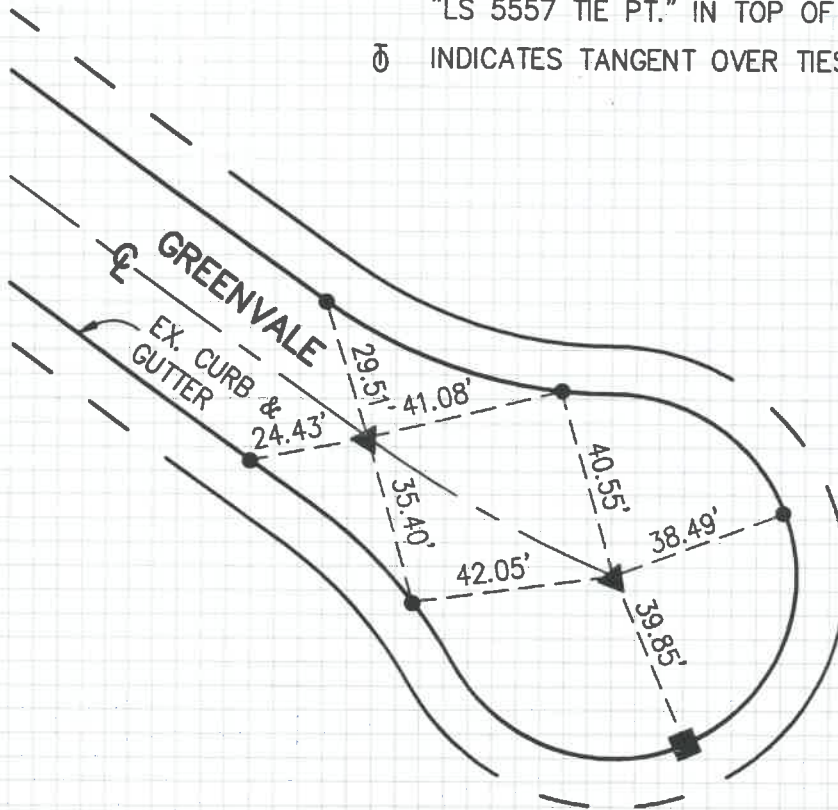
WILLIAMSON & SCHMID

HUITT-ZOLLARS

PARTY:
JOHNSON
BRUSODATE OF SURVEY
MARCH 1997

- INDICATES FOUND LEAD, TACK & TAG
"LS 5557" PER TRACT NO. 15101, M.M. 726/9-14.
- ▲ INDICATES SET SPIKE AND WASHER
STAMPED "LS 5557".
- INDICATES SET LEAD, TACK AND TAG
"LS 5557 TIE PT." IN TOP OF CURB,
- ⊖ INDICATES TANGENT OVER TIES

SEE SHEET 8



SCALE: 1"=40'

SHEET 9-OF-12

SURVEYED BY
CHAIN CALIB

DATE

WILLIAMSON & SCHMIDT

Q TIES - TRACT NO. 15101

JAMES F. GILLEN, L.S. 5557

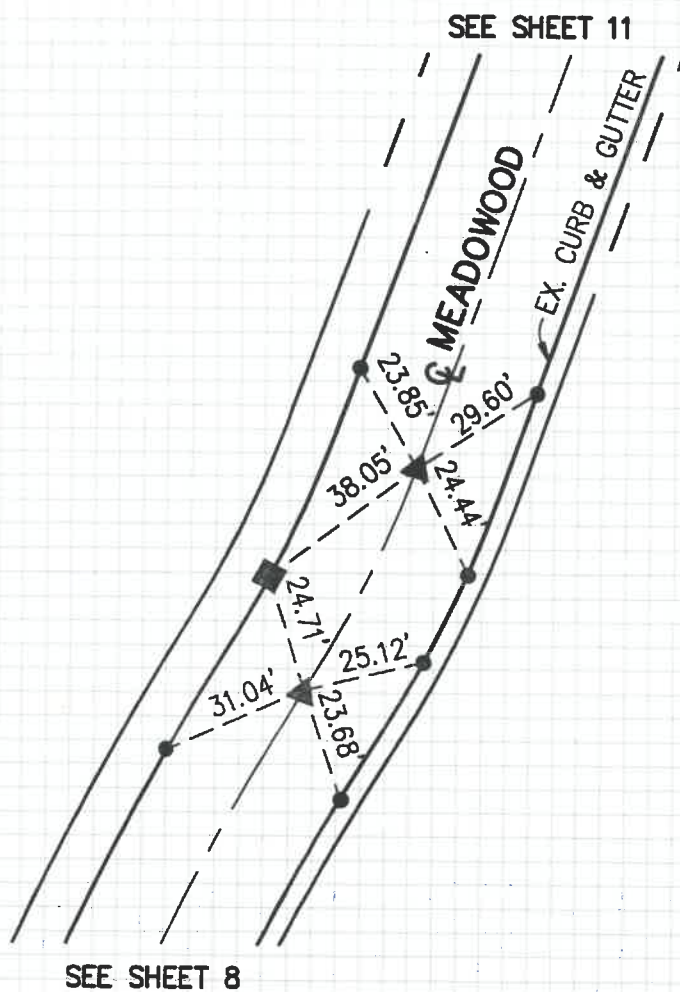
HUITT-ZOLLARS

PARTY:

JOHNSON
BRUSO

DATE OF SURVEY

MARCH 1997



SCALE: 1"=40'

- INDICATES FOUND LEAD, TACK & TAG
"LS 5557" PER TRACT NO. 15101, M.M. 726/9-14.
- ▲ INDICATES SET SPIKE AND WASHER
STAMPED "LS 5557".
- INDICATES SET LEAD, TACK AND TAG
"LS 5557 TIE PT." IN TOP OF CURB.
- ⊙ INDICATES TANGENT OVER TIES

SHEET 10 OF 12

THESE NOTES NOT FIELD CHECKED
BY ORANGE COUNTY SURVEYOR

SURVEYED BY
CHAIN CALIB

Q TIES - TRACT NO. 15101

JAMES F. GILLEN, L.S. 5557

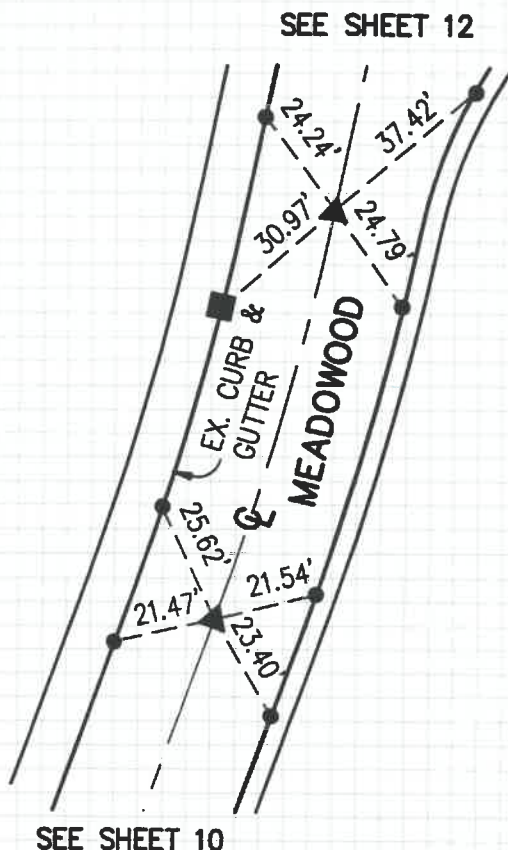
HUITT-ZOLLARS

PARTY:

JOHNSON
BRUSO

DATE OF SURVEY

MARCH 1997



SCALE: 1"=40'

- INDICATES FOUND LEAD, TACK & TAG
"LS 5557" PER TRACT NO. 15101, M.M. 726/9-14.
- ▲ INDICATES SET SPIKE AND WASHER
STAMPED "LS 5557".
- INDICATES SET LEAD, TACK AND TAG
"LS 5557 TIE PT." IN TOP OF CURB.
- ⊙ INDICATES TANGENT OVER TIES

SHEET 11 OF 12

SURVEYED BY
CHAIN CALIB

§ TIES - TRACT NO. 15101

JAMES F. GILLEN, L.S. 5557

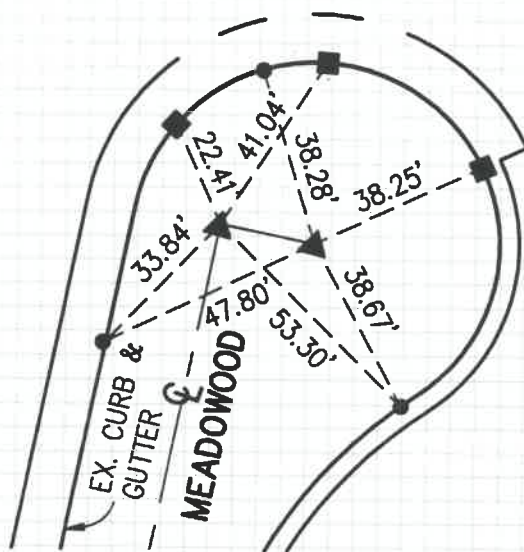
HUITT-ZOLLARS

PARTY:

JOHNSON
BRUSO

DATE OF SURVEY

MARCH 1997



SCALE: 1"=40'

SEE SHEET 11

- INDICATES FOUND LEAD, TACK & TAG
"LS 5557" PER TRACT NO. 15101, M.M. 726/9-14.
- ▲ INDICATES SET SPIKE AND WASHER
STAMPED "LS 5557".
- INDICATES SET LEAD, TACK AND TAG
"LS. 5557 TIE PT." IN TOP OF CURB.
- ⊙ INDICATES TANGENT OVER TIES

SHEET 12 OF 12