

BLOCK: 5157
MODULE: 89

WM# 44W

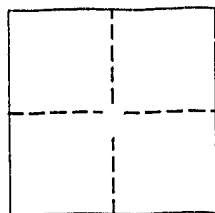
CR 1351

CORNER RECORD

Document Number

City of UNINCORPORATED TERRITORY County of ORANGE, California

Brief Legal Description FIRST CENTERLINE E.C. ON OSO PKWY. NW OF ANTONIO PKWY



CORNER TYPE

Government Corner ☐ Control ☐
Meander ☐ Property ☐
Rancho ☐ Other ☒
Date of Survey AUGUST 1995

COORDINATES

(Optional)

N. _____
E. _____
Zone _____ Datum _____
Elev _____

Corner ☐ Left as found ☐ Found and tagged ☐ Established ☐ Reestablished ☒ Rebuilt ☐

Identification and type of corner found: Evidence used to identify or procedure used to establish or reestablish the corner:

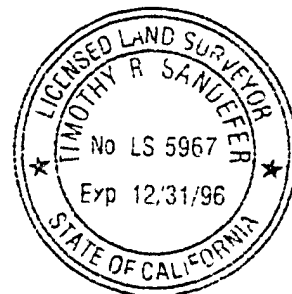
RECORD OF SURVEY 94-1082, RSB 149/43-45

A description of the physical condition of the monument as found and as set or reset:
SET LEAD, OCS BRASS TAG AND BRASS NAIL IN CONCRETE BRIDGE DECK MEDIAN. FLUSH
PER RECORD OF SURVEY 94-1082, RSB 149/43-45

SURVEYOR'S STATEMENT

This Corner Record was prepared by me or under my direction in conformance with the Land Surveyor's Act on 22 AUG 1995.

Signed T. Sanlefer L.S. or R.C.E. Number 5967



COUNTY SURVEYOR'S STATEMENT

This Corner Record was received AUGUST 22, 1995 and examined and filed AUGUST 25, 1995.

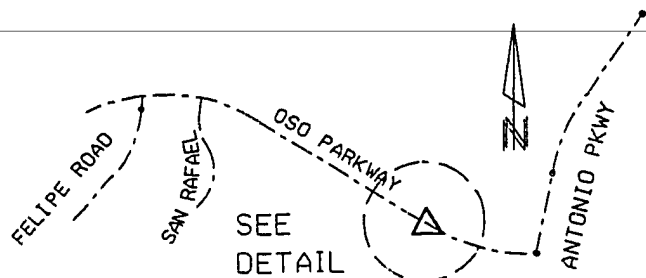
Signed Richard P. Ray Title BY: RICHARD P. RAY, DEPUTY
LS. 6390 EXPIRES 12-31-98

County Surveyor's Comment



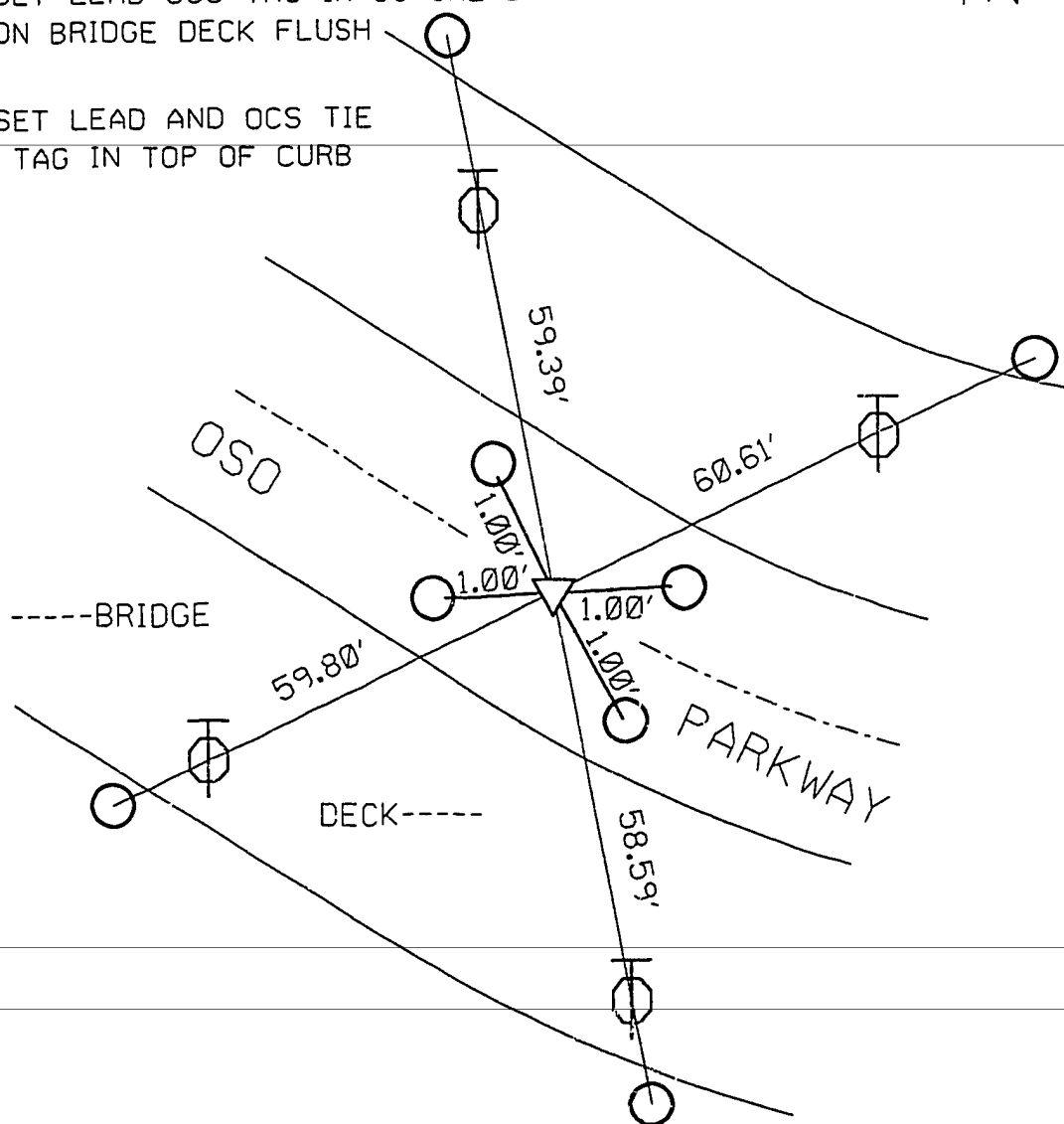
093/94-145

VICINITY MAP



△ SET LEAD OCS TAG IN CONCRETE
ON BRIDGE DECK FLUSH

○ SET LEAD AND OCS TIE
TAG IN TOP OF CURB



DETAIL
NOT TO SCALE