



OC PUBLIC WORKS DEPARTMENT
JAMES TREADAWAY, DIRECTOR
KEVIN HILLS, COUNTY SURVEYOR
LAGUNA CANYON CHANNEL (I02) SEGMENT I
CHANNEL MAINTENANCE PROJECT



LOCATION MAP



FOUND CGPS "WHYT"
N: 2191881.31'
E: 6137735.65'
THIS IS A CONTINUOUS GPS
STATION (CGPS) AND IS PART OF
THE CALIFORNIA SPATIAL
REFERENCE NETWORK (CSRN),
FROM WHICH DATA CAN BE
DOWNLOADED HERE:
[HTTP://SOPACCSRC.UCSD.EDU/](http://SOPACCSRC.UCSD.EDU/).



SET CONTROL POINT
1 1/4" LEAD TACK & STEEL TAG
FLUSH IN CONC. CURB
STAMPED "ORANGE COUNTY SURVEYOR" CP
N: 2146711.20'
E: 6095044.74'

FOUND CGPS "SBCC"
N: 2147750.81'
E: 6131652.60'
THIS IS A CONTINUOUS GPS
STATION (CGPS) AND IS PART OF
THE CALIFORNIA SPATIAL
REFERENCE NETWORK (CSRN),
FROM WHICH DATA CAN BE
DOWNLOADED HERE:
[HTTP://SOPACCSRC.UCSD.EDU/](http://SOPACCSRC.UCSD.EDU/).

BASIS OF BEARINGS

THE BASIS OF BEARINGS FOR THIS SURVEY IS BASED ON THE CALIFORNIA COORDINATE SYSTEM (CCS83), ZONE VI, NAD 83, OCS (2007.00) EPOCH ADJUSTMENT, AS DETERMINED LOCALLY BY A LINE BETWEEN CONTINUOUS GLOBAL POSITIONING STATIONS CGPS (WHYT) AND (SBCC) BEING NORTH 07°50'54" EAST AS DERIVED FROM THE COORDINATES PUBLISHED BY THE CALIFORNIA SPATIAL REFERENCE CENTER (CSRC) ALONG WITH DATA SHEETS ON FILE IN THE OFFICE OF THE ORANGE COUNTY SURVEYOR.

HORIZONTAL DATUM

COORDINATES SHOWN ARE BASED ON THE CALIFORNIA COORDINATE SYSTEM (CCS83), ZONE VI, NAD 83, OCS 2007.0 EPOCH ADJUSTMENT.
ALL DISTANCES SHOWN ARE GRID, UNLESS OTHERWISE NOTED. TO OBTAIN GROUND DISTANCES DIVIDE GRID BY 0.99996376.
ALL DISTANCES ARE BASED ON THE U.S. SURVEY FOOT.

VERTICAL DATUM

O.C.S. BM. 1E-71-69 EL. = 197.808' YEAR LEVELED: 1988
NAVD 1988 (O.C.S. 1995 ADJUSTMENT)
DESCRIPTION: FOUND 3 3/4" OCS ALUMINUM BENCHMARK DISK STAMPED "3K-34-70", SET IN THE WESTERLY CORNER OF A 4 FT. BY 9 FT. CONCRETE CATCH BASIN. MONUMENT IS LOCATED ALONG THE SOUTHERLY SIDE OF LAGUNA CANYON ROAD (RTE 133) 0.4 MILES NORTHEASTERLY ALONG (RTE 133) FROM THE CENTERLINE OF PACIFIC COAST HIGHWAY, 39.5 FT. SOUTHWESTERLY OF THE CENTERLINE OF LAGUNA CANYON ROAD AND DIRECTLY ACROSS LAGUNA CANYON ROAD FROM A SIGN READING "HOME OF THE FESTIVAL OF ARTS LAGUNA BEACH" MONUMENT IS SET LEVEL WITH THE SIDEWALK.

NOTES

THE SURVEY INFORMATION SHOWN HEREON IS TO BE USED FOR TOPOGRAPHIC RELATIONSHIPS ONLY AND IS NOT INTENDED FOR LAND ACQUISITION OR BOUNDARY PURPOSES.
PARCELS SHOWN WITHOUT BEARING AND DISTANCES ARE FOR GRAPHICAL PURPOSES.

SHEET INDEX

SHEET	NO.	DESCRIPTION
SHEET	1	TITLE SHEET
SHEETS	2-9	BOUNDARY/RIGHT OF WAY
SHEETS	10	ALIGNMENT SHEET
SHEETS	11-14	TOPOGRAPHIC MAP

ALIGNMENT NOTE

THE C/L CONSTRUCTION ALIGNMENT SHOWN HEREON WAS ESTABLISHED BY HOLDING A POINT PERPENDICULAR TO & 70' S'ELY OF STATION 45+03.58 HWY 133 WHICH WHICH IS EQUAL TO 27+84.31 C/L O.C.F.C.D CHANNEL PER (R49). STATIONING INCREASES N'LY & DECREASES S'WLY FROM SAID POINT & PARALLELS SAID C/L OF HWY.

PURPOSE OF SURVEY

THE PURPOSE OF THE SURVEY IS TO PROVIDE A TOPOGRAPHIC MAP AND RIGHT OF WAY ESTABLISHMENT FOR THIS PORTION OF THE LAGUNA CHANNEL (I02).

SENIOR LAND SURVEYOR'S CERTIFICATE:

THIS MAP CORRECTLY REPRESENTS A SURVEY MADE BY ME OR UNDER MY DIRECTION IN CONFORMANCE WITH REQUIREMENTS OF THE PROFESSIONAL LAND SURVEYOR'S ACT; THIS 11 DAY OF FEBRUARY, 2021.

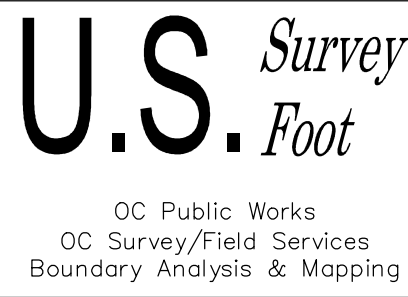
MICHAEL KUBISTY, PLS. SENIOR LAND SURVEYOR



DEPUTY COUNTY SURVEYOR'S STATEMENT:

THIS MAP HAS BEEN EXAMINED IN ACCORDANCE WITH THE PROFESSIONAL LAND SURVEYOR'S ACT; THIS 11 DAY OF FEBRUARY, 2021.

WADE WEAVER, PLS. DEPUTY COUNTY SURVEYOR



TOPOGRAPHIC MAPPING PROJECT

COUNTY OF ORANGE OC PUBLIC WORKS OC SURVEY/FIELD SERVICES/BOUNDARY ANALYSIS & MAPPING			
LAGUNA CHANNEL (I02) CHANNEL MAINTENANCE PROJECT			
TITLE SHEET			
FROM: 340' SOUTHERLY OF LAGUNA CANYON FRONTAGE ROAD			
TO: DOWNSTREAM OF MILIGAN DR.			
1/20/21	ADDITIONAL TOPO EAST OF THE CENTERLINE OF LAGUNA CANYON FRONTAGE ROAD & BETWEEN C/L ALIGNMENT STATIONS 16+00 & 28+50	DATE OF SURVEY: OCTOBER, 2019	BY: T. LOFGREEN & PARTY
12/5/20	ALIGNMENT UPDATE	TOPOGRAPHIC MAPPING	BY: H. AFTIM / R. BELTRAN
7/2/20	PTR UPDATE AT WOODLAND	OFFICE CHECK	BY: M. KUBISTY, PLS.
1/29/20	TEXT UPDATES	FIELD CHECK	BY: T. LOFGREEN & PARTY
MARK	DATE	ITEM	FILE NO. 1819PW-OP0010
REVISIONS		W.O. #F21286	FILE: LAGUNA CANYON CHANNEL SEGMENT 1_TOPO_2019.DWG

MONUMENT NOTES

- 403
- FOUND PUNCHED SPIKE & WASHER STAMPED " CALTRANS," PER R3, DOWN 0.2' IN A.C. ACCEPTED AS CENTERLINE INTERSECTION OF BROADWAY & TRAVERSE LINE SHOWN ON R2.
- 419
- FOUND PUNCHED SPIKE & WASHER PER R2 DOWN 0.2' IN A.C. ILLEGIBLE, ACCEPTED AS CENTERLINE INTERSECTION OF BEACH STREET & OCEAN AVE.
- 425
- FOUND 3/4 " I.P. PER R1, HOLLOW, FLUSH IN DIRT LEANING N'WLY. N59°15'00"W 0.09' NOT ACCEPTED AS POINT ON N'WLY RIGHT OF WAY OCEAN AVE.
- 426
- FOUND 3/4 " I.P. PER R1, HOLLOW, FLUSH IN DIRT LEANING N'WLY. N59°15'00"W 0.18' NOT ACCEPTED AS POINT ON N'WLY RIGHT OF WAY OCEAN AVE.
- 427
- FOUND 1" I.P. WITH TAG STAMPED "RE 2708" PER R1 ACCEPTED AS POINT ON N'WLY RIGHT OF WAY OCEAN AVE.
- 428
- FOUND LEAD & 3/4" BRASS TAG STAMPED "RCE 28328" PER R1, FLUSH IN CONCRETE, ACCEPTED AS 1.00' OFFSET TO THE N'WLY RIGHT OF WAY OF OCEAN AVE.
- 431
- FOUND LEAD & 3/4" BRASS TAG PER R1, FLUSH IN CONCRETE, STAMPED " RCE 28328" ACCEPTED AS 1.00' OFFSET TO THE N'WLY RIGHT OF WAY OF OCEAN AVE.
- 432
- FOUND LEAD & 1 1/4" BRASS TAG STAMPED "BC RW 4-92, PER R1, FLUSH IN CONCRETE, ACCEPTED AS B.C. IN S'WLY RIGHT OF WAY FOREST AVE.
- 434
- FOUND MAG. NAIL & WASHER STAMPED "ORANGE COUNTY SURVEYOR" PER R2 FLUSH IN A.C., N25°35'05"E 1.65' FROM CENTERLINE INTERSECTION OCEAN AVE. & FOREST AVE.
- 444
- FOUND LEAD & 3/4" BRASS TAG STAMPED "LS 3064" PER R7, FLUSH IN CONCRETE N62°18'25"W 0.48' NOT ACCEPTED AS CORNER "L" OF PARCEL 4 OF R7.
- 445
- FOUND 1" BRASS TAG STAMPED "LS 1444" PER R7, FLUSH IN CONCRETE, ACCEPTED AS CORNER "H" OF PARCEL 4 OF R7.
- 446
- FOUND 1 1/2" I.P. HOLLOW PER R7, FLUSH IN DIRT, ACCEPTED AS W'LY CORNER OF PARCEL 4 OF R7.
- 448
- FOUND 1" I.P., WITH TAG STAMPED " LS 4139", PER R7, FLUSH IN DIRT, ACCEPTED AS THE NW CORNER OF PARCEL 4 OF R7.
- 449
- FOUND LEAD AND TACK PER R14 FLUSH IN CONCRETE ACCEPTED AS THE B.C. OF THE SOUTHWESTERLY RIGHT OF WAY OF LAGUNA CANYON FRONTAGE ROAD.
- 452
- FOUND 2" I.P. WITH NAIL PER R9, FLUSH IN DIRT, ACCEPTED AS E.C. OF THE 1968 CENTERLINE ALIGNMENT OF LAGUNA CANYON ROAD.
- 541
- FOUND SPIKE & WASHER STAMPED O.C.S., PER R2, DOWN 0.2' IN A.C., ACCEPTED AS CENTERLINE INTERSECTION OF FOREST AVE., & THE N'ELY PROLONGATION OF THE CENTERLINE OF THE S'WLY PORTION OF THE LAGUNA CANYON CHANNEL (I02).

- 551
- FOUND ROUND HEAD SPIKE & WASHER, ILLEGIBLE, NO REFERENCE, FLUSH IN A.C N08°27'49"E 0.46' FROM CENTERLINE P.J OF FOREST AVE.
- 560
- FOUND GEAR SPIKE & WASHER STAMPED "KDM MERIDIAN, PLS 7564" PER R6, ACCEPTED AS THE CENTERLINE INTERSECTION OF FOREST AVE & LOMA PLACE.
- 563
- FOUND GEAR SPIKE & WASHER STAMPED "PLS 7564" PER R6 & R1, ACCEPTED AS CENTERLINE P.J. OF FOREST AVE.

- 622
- FOUND LEAD & 1 1/4" BRASS TAG PER R2, ILLEGIBLE, FLUSH IN TOP OF CURB, ACCEPTED AS CENTERLINE PROD. OF BROADWAY.

- 752
- FOUND SPIKE & WASHER STAMPED O.C.S., PER R2, DOWN 0.2' IN A.C.ACCEPTED AS THE INTERSECTION OF FOREST AVE., & THE N'ELY PROLONGATION OF THE S'ELY LINE OF LOTS 8 & 9, BLK-4 OF M.M 4/58-59, & THE S'ELY LINE OF BLK-E OF TRACT 208, MM 22-18, & ALSO BOUNDARY LINE PER BOOK 95-338 OF DEEDS, AS SHOWN BY R2.

- 548
- FOUND 1" I.P. WITH TAG ILLEGIBLE UNDER BRICK SIDEWALK ACCEPTED AS THE E.C. IN THE WESTERLY R/W OF FOREST AVENUE.

- 4496
- FOUND MAG NAIL AND WASHER STAMPED "LS 5411" PER R39, FLUSH IN AC, SOUTHEASTERLY S62°43'07"E 0.27' NOT ACCEPTED AS THE BC OF LAGUNA CANYON FRONTAGE ROAD.

- 4497
- FOUND LEAD AND TACK NO REFERENCE, FLUSH IN CONC. SIDEWALK, SOUTHEASTERLY S62°24'20"E 0.27' NOT ACCEPTED AS THE NORTHWESTERLY BC OF PARCEL 1 .

- 4463
- FOUND CHISELED "+" IN TOP OF CURB PER R14, SOUTHEASTERLY S42°26'42"E 0.25' NOT ACCEPTED AS REFERENCE TO NORTHWESTERLY BC OF PARCEL 1.

- 4250
- FOUND SPIKE AND 1 3/4" WASHER STAMPED "LS 3064" PER R25, DN 0.20' IN AC, SOUTHEASTERLY S61°11'52"E 0.19' NOT ACCEPTED AS THE EC OF LAGUNA CANYON FRONTAGE ROAD.

- 4504
- FOUND 1" I.P. WITH TAG STAMPED "LS 3064" PER R25, DN 0.35' IN DIRT, SOUTHEASTERLY S46°31'36"E 0.11' NOT ACCEPTED AS THE BC OF PARCEL 2 .

- 4505
- FOUND 1" I.P. WITH TAG STAMPED "LS 3064" PER R25, DN 0.35' IN DIRT, HELD FOR DISTANCE TO THE EC OF PARCEL 2 FROM ACCEPTED MONUMENT 4508 .

- 4506
- FOUND 1" I.P. WITH TAG STAMPED "LS 3064" PER R25, DN 0.35' IN DIRT, ACCEPTED AS THE PI OF PARCEL 2 .

- 4511
- FOUND 2" I.P. WITH TAG STAMPED "LS 3064" PER R19, DN 0.20' IN DIRT, ACCEPTED AS 5.00' OFFSET ALONG THE SOUTHEASTERLY LINE OF LOT 105.

- 4532
- FOUND SPIKE AND WASHER STAMPED "LS 5411" PER R40, FLUSH IN AC, S39°49'57"W 0.08' HELD AS POINT ON CENTERLINE OF WOODLAND DRIVE.

- 4412
- FOUND MAG NAIL AND 1 3/8" WASHER STAMPED "LS 5411" PER R40, FLUSH IN AC, S62°06'57"W 0.05' HELD FOR DISTANCE ALONG CENTERLINE OF WOODLAND DRIVE.

- 2014
- FOUND SPIKE AND WASHER STAMPED "LS 5411" PER R40, FLUSH IN AC, ACCEPTED AS THE EC CENTERLINE OF WOODLAND DRIVE.

- 4766
- FOUND PUNCHED SPIKE AND WASHER PER R25, ILLEGIBLE DN 0.30' IN AC, ACCEPTED AS THE BC CENTERLINE OF WOODLAND DRIVE.

- 4761
- FOUND 2" I.P. PER R30, HOLLOW NO TAG, SOUTHEASTERLY S77°35'33"E 0.05' HELD FOR DISTANCE TO BC ALONG THE SOUTHWESTERLY LINE OF PARCEL B.

- 4100
- FOUND SPIKE AND 1 1/4" WASHER STAMPED "CAL TRANS" PER R19, DN 0.25' IN AC ACCEPTED AS THE P.J. OF CENTERLINE WOODLAND DRIVE AND THE TANGENT LINE OF LAGUNA CANYON ROAD 1968 ALIGNMENT.

- 4464
- FOUND 2" I.P. WITH TAG STAMPED "LS 3064",NO REFERENCE DN 0.80' IN DIRT, S86°30'14"E 0.09' NOT ACCEPTED AS THE BC OF THE 1968 CL OF LAGUNA CANYON ROAD.

- 4406
- FOUND 3 1/2" ALUMINUM DISK STAMPED "LC4" PER R9, FLUSH IN DIRT, ACCEPTED AS THE NORTHEASTERLY TERMINUS OF THE 4.77' OFFSET LINE PER R9.

- 4519
- FOUND 1 1/2' I.P. NO REFERENCE, ILLEGIBLE PLASTIC PLUG FLUSH IN DIRT, N71°34'55"E 0.07' NOT ACCEPTED AS THE NORTHWEST CORNER OF LOT 95 .

- 4516
- FOUND 1" I.P. WITH TAG STAMPED "LS 4139' PER R41, FLUSH IN FLAGSTONE, ACCEPTED AS THE SOUTHEAST CORNER OF LOT 95 .

- 4518
- FOUND 1" I.P. WITH TAG STAMPED "LS 4139' PER R41, FLUSH IN DIRT, ACCEPTED AS THE NORTHEAST CORNER OF LOT 83.

- 4514
- FOUND 1 1/2" I.P WITH TAG STAMPED "LS 4139' PER R41, FLUSH IN DIRT, ACCEPTED AS THE SOUTHEAST CORNER OF LOT 83.

- 4781
- FOUND 1" IP WITH TAG STAMPED "LS 3064" PER 41, DN 0.50' IN DIRT, NORTHEASTERLY N42°46'45"E 0.07' HELD AS POINT ON NORTHWESTERLY LINE OF LOT 76.

- 4468
- FOUND 1" I.P. WITH TAG STAMPED "LS 4384' PER R32, DN 0.65' IN DIRT, SOUTHEASTERLY S86°27'15E 0.08' NOT ACCEPTED AS THE INTERSECTION OF 1968 CL LAGUNA CANYON ROAD HELD FOR CL MILLIGAN DRIVE.

- 4467
- FOUND CONC. NAIL AND TAG STAMPED "LS 4384" , FLUSH IN AC, ACCEPTED AS POINT ON CL MILLIGAN DRIVE.

- 4466
- FOUND GEAR SPIKE & WASHER STAMPED "LS 4384" PER R32, FLUSH IN AC, ACCEPTED AS POINT ON CL MILLIGAN DRIVE PER R32.

- 4471
- FOUND 1" I.P. WITH TAG STAMPED "LS 4384' PER R32, DN 1.30' IN DIRT, ACCEPTED AS THE SOUTHWEST CORNER OF PARCEL 2.
- 4472
- FOUND 1" I.P. PER R32, HOLLOW, DN 0.65' IN DIRT, ACCEPTED AS THE WESTERLY CORNER OF PARCEL 2.
- 4473
- FOUND 1" I.P. PER R32, HOLLOW DN 0.65' IN DIRT, ACCEPTED AS THE WESTERLY CORNER OF PARCEL 2.
- 4755
- FOUND 1" I.P. WITH TAG STAMPED "LS 4384" PER R32, FLUSH IN AC, ACCEPTED AS THE SOUTHWEST CORNER OF LOT A.
- 4213
- FOUND 1" I.P. WITH TAG STAMPED "LS 4384" PER R32, FLUSH IN AC, ACCEPTED AS THE SOUTHERLY CORNER OF LOT A.
- 4218
- FOUND 1" I.P. WITH TAG STAMPED "LS 4384" PER R32, FLUSH IN AC, ACCEPTED AS THE SOUTHERLY ANGLE POINT OF LOT A.
- 4762
- FOUND 1" I.P. WITH TAG STAMPED "LS 4384" PER R32, FLUSH IN AC, ACCEPTED AS THE EASTERLY CORNER OF LOT A.
- 4760
- FOUND 1" I.P. WITH PLASTIC PLUG STAMPED "LS 4384" PER R32 ,FLUSH IN AC, ACCEPTED AS THE EASTERLY CORNER OF LOT A.
- 4759
- FOUND 1" I.P. WITH TAG STAMPED "LS 4384" PER R32, FLUSH IN AC, ACCEPTED AS THE EASTERLY ANGLE POINT OF LOT A.
- 4758
- FOUND 1" I.P. PER R32, HOLLOW FLUSH IN AC, ACCEPTED AS THE EASTERLY ANGLE POINT OF LOT A.
- 4757
- FOUND 1" I.P. WITH TAG STAMPED "LS 4384" PER R32, FLUSH IN AC, ACCEPTED AS THE EASTERLY ANGLE POINT OF LOT A.
- 4756
- FOUND 1" I.P. WITH TAG STAMPED "LS 4384" PER R32 ,FLUSH IN AC, ACCEPTED AS THE NORTHEAST CORNER OF LOT A.
- 4474
- FOUND 1" I.P. WITH TAG STAMPED "LS 4384" PER R32 ,FLUSH IN AC, ACCEPTED AS THE NORTHWEST CORNER OF LOT A.
- 4475
- FOUND 1" I.P. WITH TAG STAMPED "LS 3064" PER R32 ,FLUSH IN DIRT, ACCEPTED AS THE NORTHEAST CORNER OF PARCEL 1.
- 4414
- FOUND A BROKEN GEAR SPIKE NO REFERENCE DN 0.25' IN AC, ACCEPTED AS THE CENTERLINE PI OF CANYON ACRES DRIVE.
- 4753
- FOUND A BROKEN SPIKE SHAFT NO REFERENCE, DN 0.25' IN AC, NORTHEASTERLY N37°21'25E 0.07' FROM INTERSECTION HELD AS POINT ON CENTERLINE 1968 LAGUNA CANYON ROAD.
- 470
- FOUND GEAR SPIKE AND WASHER STAMPED "RCE 28328" PER34, FLUSH IN AC, ACCEPTED CENTERLINE PI OF ARROYO DRIVE.
- 4401
- FOUND SPIKE WITH PUNCH & 1 1/4" WASHER STAMPED "CAL TRANS" PER R37, DN 0.20' IN AC, ACCEPTED AS E.C. CENTERLINE 1968 LAGUNA CANYON ROAD.
- 4488
- FOUND 1" I.P. NO REFERENCE, NO TAG DN 2.5' IN DT, ACCEPTED AS NORTHWEST CORNER OF PARCEL 1 .
- 4494
- FOUND 1" I.P. PER R37, NO TAG UP 0.70' IN DIRT, ACCEPTED AS THE NORTHEAST CORNER OF PARCEL 1.

NOTE

PARCELS SHOWN WITHOUT BEARING AND DISTANCES ARE FOR GRAPHICAL PURPOSES ONLY.

LEGEND

-
- FOUND MONUMENT AS NOTED
- ▲
- ESTABLISHED BY TIES SEE ESTABLISHMENT NOTES

LINE TABLE

CL ROADWAY	_____
SURVEY GEOMETRY	- - - - -
STATE HIGHWAY RIGHT-OF-WAY	_____ R/W _____ R/W _____

				COUNTY OF ORANGE OC PUBLIC WORKS OC SURVEY/FIELD SERVICES/BOUNDARY ANALYSIS & MAPPING					
				LAGUNA CHANNEL (I02) CHANNEL MAINTENANCE PROJECT					
				TOPOGRAPHIC MAP					
				FROM: FOREST AVE. TO: CANYON ACRES DRIVE					
				DATE OF SURVEY: NOV 2019		BY: T. LOFGREEN		SHEET NO. 2 of 14	
				TOPOGRAPHIC MAPPING		BY: T. LOFGREEN/ R. BELTRAN			
				OFFICE CHECK		BY: M. KUBISTY, PLS.			
				FIELD CHECK		BY: T. LOFGREEN			
MARK		DATE	ITEM	SCALE: W.O. #EF21286		FILE NO.			
			REVISIONS	FILE: LAGUNA_CHANNEL_BOUNDARY_PHASE_II_2019.DWG					

ESTABLISHMENT NOTES:

- CENTERLINE OF OCEAN AVE ESTABLISHED BETWEEN MONUMENT NOTE [419] & ESTABLISHMENT NOTE (2)
- S.F.N., ESTABLISHED THE INTERSECTION OF OCEAN AVENUE & FOREST AVENUE BY THE N'E'LY PROLONGATION OF A LINE BETWEEN MONUMENT NOTE [419] & ESTABLISHMENT NOTE (3) & AT RECORD DISTANCE N'W'LY PER R1 FROM ACCEPTED MONUMENT [563]. FITS RECORD DISTANCE BETWEEN MONUMENT NOTE [419] & ESTABLISHMENT NOTE (2) PER R1.
- CENTERLINE OF FOREST AVE ESTABLISHED BETWEEN MONUMENT NOTE [563] & ESTABLISHMENT NOTE (2)
- S.F.N. ESTABLISHED BY PROPORTION BETWEEN MONUMENT NOTES [622] & [403]
- CENTERLINE BROADWAY ESTABLISHED BETWEEN MONUMENT NOTE [622] & MONUMENT NOTE [403]
- CENTERLINE BROADWAY ESTABLISHED HOLDING RECORD DIMENSIONS FROM TRAVERSE LINE PER R9 BETWEEN MONUMENT NOTE [403] & ESTABLISHMENT NOTE (7)
- SFN. ESTABLISHED HOLDING RECORD ANGLE AND DISTANCE PER R7 N'E'LY FROM MONUMENT NOTE [403]
- CENTERLINE OF FOREST AVE ESTABLISHED BETWEEN ESTABLISHMENT NOTES (10) & (7)
- CENTERLINE OF FOREST AVE ESTABLISHED BETWEEN ESTABLISHMENT NOTES (2) & (10)
- S.F.N. ESTABLISHED BY INTERSECTION FROM THE N'W'LY PROLONGATION OF A LINE BETWEEN MONUMENT NOTES [563] & ESTABLISHMENT NOTE (2) & THE S'E'LY PROLONGATION OF A LINE BETWEEN MONUMENT NOTES [752] & [541] FITS RECORD DISTANCE BETWEEN ESTABLISHMENT NOTES (2) & (10) PER R2.
- S'W'LY RIGHT OF WAY OF FOREST AVE ESTABLISHED PER LOT LINE ADJUSTMENT O.R. 199500424662.
- CENTERLINE OF FOREST AVE ESTABLISHED BETWEEN ESTABLISHMENT NOTE (2) & (7)
- ESTABLISHED HOLDING RECORD DISTANCE PER R5 N'W'LY ALONG THE CENTERLINE OF FOREST AVE BETWEEN ESTABLISHMENT NOTES (10) & (7)
- ESTABLISHED S'E'LY PROLONGATION OF R5 BETWEEN ESTABLISHMENT NOTES (13) & (15)
- ESTABLISHED AS THE P.O.B. FOR R5 BY HOLDING RECORD DISTANCE & ANGLE PER R5 FROM ESTABLISHMENT NOTE (13)
- ESTABLISHED THE INTERSECTION OF THE N'E'LY RIGHT OF WAY FOREST AVE & THE CENTERLINE OF THE LAGUNA CANYON CHANNEL (102) BY HOLDING RECORD DISTANCE PER R8 N'W'LY ALONG THE N'E'LY RIGHT OF WAY OF SAID FOREST AVE FROM ESTABLISHMENT NOTE (15) POSITION IS ALSO THE P.O.B. FOR SAID R8
- ESTABLISHED THE B.C. OF THE CENTERLINE OF THE LAGUNA CANYON CHANNEL (102) BY RECORD ANGLE & DISTANCE FROM ESTABLISHMENT NOTE (16) PER R8.
- CENTERLINE OF THE LAGUNA CHANNEL (102) ESTABLISHED BY HOLDING RECORD DATA BETWEEN ESTABLISHMENT NOTES (16) & (19) PER R8.
- ESTABLISHED BY RECORD ANGLE PER R7 & RECORD DISTANCE PER R17 FROM ESTABLISHMENT NOTE (20) .
- ESTABLISHED BY RECORD ANGLE & DISTANCE FROM ESTABLISHMENT NOTE (21) PER R7.
- ESTABLISHED AT RECORD DISTANCE PER R7 N'LY ALONG THE E'LY RIGHT OF WAY OF LAGUNA CANYON ROAD FROM ESTABLISHMENT NOTE (22)
- ESTABLISHED POINT IN E'LY RIGHT OF WAY OF THE LAGUNA CANYON ROAD 1914 ALIGNMENT PERPENDICULAR TO & AT RECORD DISTANCE PER R7 FROM ESTABLISHMENT NOTE (23)
- ESTABLISHED AT RECORD DISTANCE N'E'LY ALONG THE CENTERLINE OF LAGUNA CANYON ROAD BETWEEN ESTABLISHMENT NOTES (29) & (30) PER R7.
- S.F.N. ESTABLISHED CENTERLINE B.C. OF LAGUNA CANYON ROAD 1968 ALIGNMENT BY TIES PER R15
- ESTABLISHED POINT ON CENTERLINE OF LAGUNA CANYON ROAD 1968 ALIGNMENT BY TIES PER R15
- ESTABLISHED POINT ON CENTERLINE OF LAGUNA CANYON ROAD 1968 ALIGNMENT BY TIES PER R15
- S.F.N. ESTABLISHED P.I. OF LAGUNA CANYON ROAD 1968 ALIGNMENT BY LEAST SQUARES ADJUSTMENT BETWEEN ESTABLISHMENT NOTES (7) & (24) DID NOT ACCEPT TIES PER R15.
- ESTABLISHED BY RECORD DISTANCE PER R2 N'W'LY FROM ESTABLISHMENT NOTE (7)
- ESTABLISHED P.I. OF THE CENTERLINE OF LAGUNA CANYON ROAD 1914 ALIGNMENT BY HOLDING RECORD OFFSET DIMENSIONS PARALLEL TO & PERPENDICULAR WITH THE 1968 CENTERLINE ALIGNMENT PER R2, R16, & R18.
- ESTABLISHED P.I. OF THE CENTERLINE OF LAGUNA CANYON ROAD 1914 ALIGNMENT BY HOLDING RECORD DISTANCE PER R7 & OFFSET DIMENSIONS PARALLEL TO & PERPENDICULAR WITH THE 1968 CENTERLINE ALIGNMENT PER R16 & R18.
- CENTERLINE OF LAGUNA CANYON ROAD 1914 ALIGNMENT ESTABLISHED BY HOLDING RECORD OFFSET DIMENSIONS PARALLEL TO & PERPENDICULAR WITH THE 1968 CENTERLINE ALIGNMENT PER R2.
- CENTERLINE OF LAGUNA CANYON ROAD 1968 ALIGNMENT ESTABLISHED BETWEEN ESTABLISHMENT NOTES (7) (27) (24) (25) (26) & MONUMENT NOTE [452]
- ESTABLISHED POINT IN THE CENTERLINE OF OCEAN AVENUE AT 29.00' FROM ACCEPTED MONUMENT [431] AT A RIGHT ANGLE FROM ACCEPTED MONUMENT [428]
- ESTABLISHED THE CENTERLINE OF OCEAN AVENUE BETWEEN ACCEPTED MONUMENT [419] & ESTABLISHMENT NOTE (3)
- ESTABLISHED THE INTERSECTION OF CENTERLINE TANGENTS OF FOREST AVENUE (THIRD STREET) & OCEAN AVENUE PER R5.
- ESTABLISHED THE CENTERLINE OF LAGUNA CANYON ROAD 1968 ALIGNMENT BETWEEN ESTABLISHMENT NOTE (25) & ESTABLISHMENT NOTE (26)
- ESTABLISHED THE BC CENTERLINE OF LAGUNA CANYON ROAD 1968 ALIGNMENT BY TIES PER R18 & R19.
- ESTABLISHED THE CENTERLINE OF LAGUNA CANYON ROAD 1968 ALIGNMENT BETWEEN ESTABLISHMENT NOTE (37) & ACCEPTED MONUMENT [452]
- ESTABLISHED CENTERLINE P.I. OF LAGUNA CANYON ROAD 1968 ALIGNMENT BY THE NORTHEASTERLY PROLONGATION OF THE LINE ESTABLISHED BY NOTE (36) & THE SOUTHWESTERLY PROLONGATION THE LINE ESTABLISHED BY ESTABLISHMENT NOTE (38)
- ESTABLISHED THE P.I. OF THE OFFSET LINE PER R9 BY INTERSECTION OF THE NORTHEASTERLY PROLONGATION OF THE LINE ESTABLISHED BY ESTABLISHMENT NOTE (38) & THE SOUTHWESTERLY PROLONGATION OF A LINE OFFSET HOLDING RECORD DIMENSION PARALLEL WITH THE 1968 CENTERLINE ALIGNMENT PER R9 ESTABLISHED BY NOTE (38)
- S.F.N. ESTABLISHED THE CENTERLINE INTERSECTION OF WOODLAND DRIVE & LAGUNA CANYON FRONTAGE ROAD BY TIES PER R42.
- S.F.N. ESTABLISHED A POINT ON CENTERLINE CANON ACRES DRIVE BY TIES PER R43.
- S.F.N. ESTABLISHED THE CENTERLINE INTERSECTION OF CANYON ACRES DRIVE & ARROYO DRIVE BY TIES PER R44.
- ESTABLISHED THE CENTERLINE OF WOODLAND DRIVE BY ACCEPTED MONUMENTS [4100] [4412] AND [4768]
- ESTABLISHED THE CENTERLINE OF CANYON ACRES DRIVE BETWEEN ESTABLISHMENT NOTE (43) AND ACCEPTED MONUMENT [4414]
- ESTABLISHED BY THE P.I. CENTERLINE LAGUNA CANYON ROAD 1914 & 1929 ALIGNMENT BY RECORD DIMENSIONS PER R19.
- ESTABLISHED CENTERLINE LAGUNA CANYON ROAD 1914 AND 1929 ALIGNMENT BY LEAST SQUARES ADJUSTMENT BETWEEN ESTABLISHMENT NOTE (40) AND ESTABLISHMENT NOTE (46)
- ESTABLISHED CENTERLINE LAGUNA CANYON ROAD 1914 AND 1929 ALIGNMENT BY LEAST SQUARES ADJUSTMENT BETWEEN ESTABLISHMENT NOTE (46) AND ACCEPTED MONUMENT [4401]
- ESTABLISHED CITY OF LAGUNA BEACH RIGHT OF WAY OF LAGUNA CANYON FRONTAGE ROAD HOLDING RECORD DIMENSIONS PER R23 AND PARALLEL TO CENTERLINE LAGUNA CANYON ROAD 1968 ALIGNMENT ESTABLISHED BY NOTE (38) . THIS AREA PENDING RECEIPT OF TITLE REPORT.
- ESTABLISHED CENTERLINE OF LAGUNA CANYON FRONTAGE ROAD PER R21, R14, AND R25 BY RECORD DIMENSIONS AND OFFSET PARALLEL TO SOUTHEASTERLY RIGHT OF WAY LAGUNA CANYON FRONTAGE ROAD ESTABLISHED BY NOTE (49)
- CENTERLINE OF MILLIGAN AVENUE ESTABLISHED BETWEEN ACCEPTED MONUMENTS [4468] AND [4466]
- ESTABLISHED BC CENTERLINE LAGUNA CANYON ROAD 1968 ALIGNMENT BY ESTABLISHMENT NOTE (48)
- ESTABLISHED EC LAGUNA CANYON ROAD (STATE HIGHWAY 133) 1914 & 1929 ALIGNMENT AT RECORD DISTANCE FROM ESTABLISHMENT NOTE (62)
- ESTABLISHED BC IN THE CENTERLINE OF LAGUNA CANYON ROAD 1968 ALIGNMENT AT 30.00' FROM ESTABLISHMENT NOTE (53) AT A RIGHT ANGLE FROM ESTABLISHMENT NOTE (52)
- ESTABLISHED EC IN THE CENTERLINE OF LAGUNA CANYON ROAD 1968 ALIGNMENT AT 30.00' FROM ESTABLISHMENT NOTE (52) AT A RIGHT ANGLE FROM ESTABLISHMENT NOTE (53)
- ESTABLISHED THE CENTERLINE OF LAGUNA CANYON ROAD 1968 ALIGNMENT BETWEEN ESTABLISHMENT NOTES (54) & (55)
- ESTABLISHED THE CENTERLINE CURVE CONCAVE TO THE NORTHWEST BETWEEN ESTABLISHMENT NOTES (58) & (59) TANGENT TO CENTERLINES ESTABLISHED BY ESTABLISHMENT NOTES (38) AND (56)
- ESTABLISHED THE NORTH LINE OF LOT 1 SEC 24, T7S, R9W, S.B.B.M. PER R37 BETWEEN ACCEPTED MONUMENTS [4488] AND [4494]

NOTE

PARCELS SHOWN WITHOUT BEARING AND DISTANCES ARE FOR GRAPHICAL PURPOSES ONLY.

LEGEND

- FOUND MONUMENT AS NOTED
▲ ESTABLISHED BY TIES SEE ESTABLISHMENT NOTES

LINE TABLE

CL ROADWAY _____

SURVEY GEOMETRY _____

STATE HIGHWAY RIGHT-OF-WAY _____ R/W _____ R/W _____

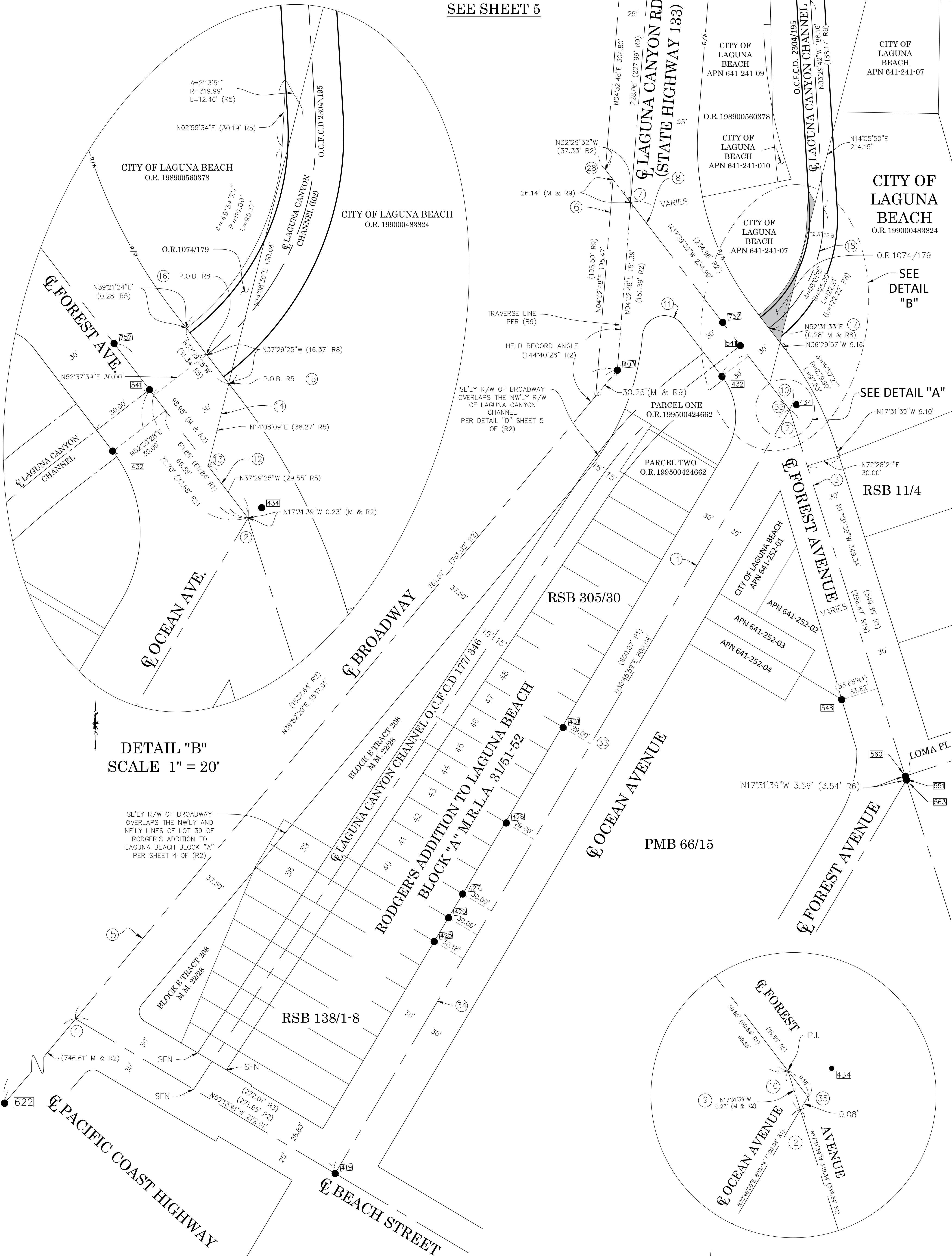
- ESTABLISHED NORTHEASTERLY LINE OF LOT 99 PARALLEL WITH, PERPENDICULAR TO AND 15' PER R30 FROM ESTABLISHMENT NOTE 44
- ESTABLISHED SOUTHEASTERLY RIGHT OF WAY OF 1914 & 1929 LAGUNA CANYON ROAD PARALLEL WITH, PERPENDICULAR TO AND 25' PER R28 FROM ESTABLISHMENT NOTE 47
- ESTABLISHED HOLDING RECORD CURVE DATA PER R50 S'ELY FROM ESTABLISHMENT NOTE 62
- ESTABLISHED THE POINT OF COMMENCEMENT FOR R50 BY HOLDING RECORD COURSES, PER BOOK 450 PAGE 1 O.R., N'WLY ALONG LINE ESTABLISHMENT 69 FROM ESTABLISHMENT NOTE 66
- ESTABLISHED HOLDING RECORD CURVE DATA PER R30 SOUTHEASTERLY FROM ESTABLISHMENT NOTE 62
- ESTABLISHED THE MOST WESTERLY CORNER OF R30 HOLDING RECORD DISTANCE, PER R30 FROM ESTABLISHMENT NOTE 62 PARALLEL WITH, PERPENDICULAR TO AND 25' FROM ESTABLISHMENT NOTE 47
- ESTABLISHED THE MOST SOUTHERLY CORNER OF LOT 104 OF R30 HOLDING RECORD ANGLE AND DISTANCE PER R30 AT ESTABLISHMENT NOTE 64 FROM ESTABLISHMENT NOTE 62
- ESTABLISHED THE MOST EASTERLY CORNER OF LOT 99, OF R30 HOLDING RECORD DISTANCE PER R30 FROM ESTABLISHMENT NOTE 63 PARALLEL WITH, AND PERPENDICULAR 15' FROM ESTABLISHMENT NOTE 44
- ESTABLISHED THE SOUTHEASTERLY LINES OF LOTS 104, 103, 102, 101, 100, AND 99 OF R30 HOLDING RECORD ANGLES AND DISTANCES PER R30 BETWEEN ESTABLISHMENT NOTES 65 AND 66
- ESTABLISHED THE WESTERLY CORNER OF R49 HOLDING RECORD DISTANCE PER R49 FROM SOUTHEASTERLY FROM ESTABLISHMENT NOTE 64 BETWEEN ESTABLISHMENT NOTES 64 AND 65
- ESTABLISHED A LINE PARALLEL WITH AND 80.00' SOUTHEASTERLY OF LAGUNA CANYON CHANNEL PER R49 FROM ESTABLISHMENT NOTE 66
- ESTABLISHED THE WESTERLY CORNER OF R46 HOLDING RECORD DISTANCE PER R46 FROM ESTABLISHMENT NOTE 64 BETWEEN ESTABLISHMENT NOTES 64 AND 65
- ESTABLISHED THE NORTHERLY CORNER OF R46 HOLDING RECORD ANGLE AND DISTANCE PER R46 AT ESTABLISHMENT NOTE 70 FROM ESTABLISHMENT NOTE 65
- ESTABLISHED THE NORTHERLY CORNER OF R47 HOLDING RECORD ANGLE AND DISTANCE PER R47 AT ESTABLISHMENT NOTE 71 FROM ESTABLISHMENT NOTE 70
- ESTABLISHED THE NORTHERLY CORNER OF R48 HOLDING RECORD ANGLE AND DISTANCE PER R48 AT ESTABLISHMENT NOTE 72 FROM ESTABLISHMENT NOTE 71
- ESTABLISHED THE BC ON THE 1914 CL OF LAGUNA CANYON RD. FROM ESTABLISHMENT NOTE 48 BETWEEN ESTABLISHMENT NOTE 46 AND ACCEPTED MONUMENT 4401
- ESTABLISHED A POINT ON 1929 CL OF LAGUNA CANYON RD. FROM ESTABLISHMENT NOTE 48 RECORD DISTANCE PER R19 FROM ESTABLISHMENT NOTE 74
- ESTABLISHED THE NORTHWESTERLY CORNER OF PARCEL 104 RADIAL 28.12' PER R19 FROM ESTABLISHMENT NOTE 75
- ESTABLISHED THE BC OF A NON-TANGENT CURVE CONCAVE TO THE NORTHEAST ON THE PROLONGATION OF LINE ESTABLISHMENT NOTE 69 RECORD DISTANCE PER R19 FROM ESTABLISHMENT NOTE 76
- ESTABLISHED THE EC OF A NON-TANGENT CURVE CONCAVE TO THE NORTHEAST BY RECORD CURVE DATA PER R19 FROM ESTABLISHMENT NOTE 77
- ESTABLISHED THE MOST WESTERLY CORNER OF LOT 80, SARA THURSTON PARK RECORD DISTANCE PER R30 FROM ACCEPTED MONUMENT 4511 PARALLEL WITH, PERPENDICULAR TO AND 20' FROM ESTABLISHMENT NOTE 44
- ESTABLISHED THE NORTHEASTERLY RIGHT OF WAY OF WOODLAND DR. PARALLEL WITH, PERPENDICULAR 20' FROM ESTABLISHMENT NOTE 44 BETWEEN ESTABLISHMENT NOTES 79 AND ACCEPTED MONUMENT 4511
- ESTABLISHED THE MOST SOUTHERLY CORNER OF PARCEL 104 RECORD DISTANCE PER R19 ON A LINE BETWEEN ESTABLISHMENT NOTE 78 AND ACCEPTED MONUMENT 4516
- ESTABLISHED THE NORTHEASTERLY RIGHT OF WAY PARALLEL WITH, PERPENDICULAR 23' FROM ESTABLISHMENT NOTE 44 BETWEEN ESTABLISHMENT NOTES 78 AND 81
- ESTABLISHED THE EASTERLY CORNER OF R48 HOLDING RECORD ANGLE AND DISTANCE PER R48 AT ESTABLISHMENT NOTE 64 FROM ESTABLISHMENT NOTE 65
- ESTABLISHED THE EASTERLY CORNER OF R47 HOLDING RECORD ANGLE AND DISTANCE PER R47 AT ESTABLISHMENT NOTE 85 FROM ESTABLISHMENT NOTE 66
- ESTABLISHED THE EASTERLY CORNER OF R46 HOLDING RECORD ANGLE AND DISTANCE PER R46 AT ESTABLISHMENT NOTE 68 FROM ESTABLISHMENT NOTE 64
- ESTABLISHED THE CENTERLINE E.C. OF LAGUNA CANYON ROAD 1968 ALIGNMENT PER (R21) BY HOLDING RECORD DISTANCE NWLY FROM ESTABLISHMENT NOTE 37 ALONG ESTABLISHMENT NOTE 38
- ESTABLISHED THE 1968 CENTERLINE OF LAGUNA CANYON ROAD BY HOLDING RECORD RADIUS 2500.00 FEET PER R9 TANGENT TO A LINE ESTABLISHED BY ESTABLISHMENT NOTES 24 AND 23, AND LINE ESTABLISHMENT 38

REFERENCES

- (R1) = RECORD OF SURVEY RSB 305/30
(R2) = RECORD OF SURVEY RSB 138/1-8
(R3) = RECORD OF SURVEY RSB 291/13-14
(R4) = PARCEL MAP PMB 66/15
(R5) = OFFICIAL RECORD O.R. 1074/179
(R6) = CORNER RECORD CR-2007-1482
(R7) = RECORD OF SURVEY RSB 232/42-43
(R8) = OFFICIAL RECORD O.R. 2304/195
(R9) = RECORD OF SURVEY RSB 119/22-23
(R10) = OFFICIAL RECORD O.R. 1055/250
(R11) = COUNTY SURVEYOR TIE BOOK CSTB 86/1-46-27A-28A
(R12) = OFFICIAL RECORD O.R. 440/192
(R13) = OFFICIAL RECORD O.R. 2243/119
(R14) = RECORD OF SURVEY RSB 114/10
(R15) = CALTRANS CL TIES SR-73-008
(R16) = CALTRANS SURVEY CONTROL MAP 001746-SM0583
(R17) = OFFICIAL RECORD O.R. 6875/114
(R18) = CALTRANS ALIGNMENT NOTES A269-001_013-020
(R19) = LAGUNA CANYON CHANNEL (I02)
PARCEL 104 ENCROACHMENT OP96/97-18
(R20) = CAL TRANS ALIGNMENT NOTES ORA185 LGN B&A
A269-001 009-012
(R21) = RECORD OF SURVEY RSB 78/9
(R23) = LAGUNA CANYON FRONTAGE ROAD
OFFICIAL RECORD 6003/824
(R25) = PARCEL MAP NO. 88-446, PMB-241/33
(R26) = OFFICIAL RECORD O.R. 2094/609-610
(R27) = OFFICIAL RECORD O.R. 2203/496
(R28) = OFFICIAL RECORD O.R. 2318/488-490
(R29) = CAL TRANS RIGHT OF WAY MAP,
ROAD VII-ORA-185-LGN. B; A, FEB 1951
(R30) = RECORD OF SURVEY RSB 4/16
(R31) = OFFICIAL RECORD O.R. 3688/211
(R32) = PARCEL MAP NO. 2005-168, PMB 367/45-46
(R33) = PARCEL MAP, PMB 118/46
(R34) = RECORD OF SURVEY, RSB 279/13
(R35) = OFFICIAL RECORD O.R. 2221/524
(R36) = OFFICIAL RECORD O.R. 3929/117
(R37) = PARCEL MAP, PMB 66/44
(R38) = OFFICIAL RECORD O.R. 5860/340
(R39) = CORNER RECORD CR-2008-1607
(R40) = CORNER RECORD CR-2008-1597
(R41) = RECORD OF SURVEY RSB 304/28
(R42) = CORNER RECORD CR-2008-1601
(R43) = CORNER RECORD CR-2000-0345
(R44) = CORNER RECORD CR-2007-2833
(R45) = INSTRUMENT NO. 2003000700579 O.R.
(R46) = OFFICIAL RECORD O.R. 3915/558
(R47) = OFFICIAL RECORD O.R. 3898/551
(R48) = OFFICIAL RECORD O.R. 3893/433
(R49) = OFFICIAL RECORD O.R. 6454/188-190
(R50) = OFFICIAL RECORD O.R. 3688/211-213
(R51) = OFFICIAL RECORD O.R. 2233/164
(R52) = OFFICIAL RECORD O.R. 2349/337
(R53) = OFFICIAL RECORD O.R. 2209/490
(R54) = OFFICIAL RECORD O.R. 2314/215
(R55) = OFFICIAL RECORD O.R. 2185/190
(R56) = OFFICIAL RECORD O.R. 6459/798
(R57) = OFFICIAL RECORD O.R. 3906/367
(R58) = OFFICIAL RECORD O.R. 3893/421
(R59) = OFFICIAL RECORD O.R. 1132/209

4	1/20/21	ADDITIONAL TOPO EAST OF THE CENTERLINE OF LAGUNA CANYON FRONTRIDGE ROAD & BETWEEN C/L ALIGNMENT STATIONS 16+00 & 26+50	COUNTY OF ORANGE OC PUBLIC WORKS OC SURVEY/FIELD SERVICES/BOUNDARY ANALYSIS & MAPPING LAGUNA CHANNEL (I02) CHANNEL MAINTENANCE PROJECT	TOPOGRAPHIC MAP	FROM: FOREST AVE. TO: CANYON ACRES DRIVE	DATE OF SURVEY: NOV 2019 TOPOGRAPHIC MAPPING OFFICE CHECK FIELD CHECK	BY: T. LOFGREEN BY: T. LOFGREEN/ R. BELTRAN BY: M. KUBISTY, PLS. BY: T. LOFGREEN	SHEET NO. 3 of 14
	12/5/20	ALIGNMENT UPDATE						
3	7/2/20	PTR UPDATE AT WOODLAND	SCALE: _____ W.O. #EF21286 FILE NO. _____ FILE: LAGUNA_CHANNEL_BOUNDARY_PHASE_II_2019.DWG					
2	1/29/20	TEXT UPDATES						
1		ITEM						
MARK DATE REVISIONS								

SEE SHEET 5



DETAIL "B"
SCALE 1" = 20'

SE'LY R/W OF BROADWAY
OVERLAPS THE NW'LY AND
NE'LY LINES OF LOT 39 OF
RODGER'S ADDITION TO
LAGUNA BEACH BLOCK "A"
PER SHEET 4 OF (R2)

DETAIL "A"
NTS

NOTE

PARCELS SHOWN WITHOUT BEARING AND DISTANCES ARE FOR GRAPHICAL PURPOSES ONLY.

LEGEND

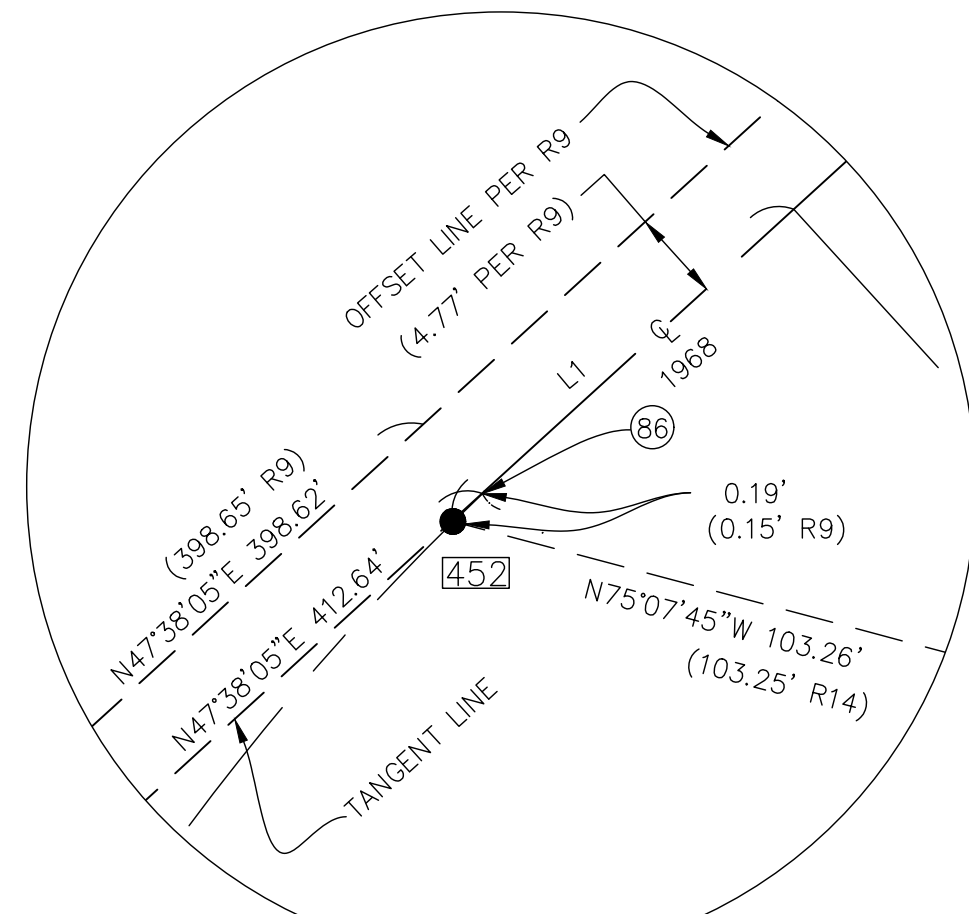
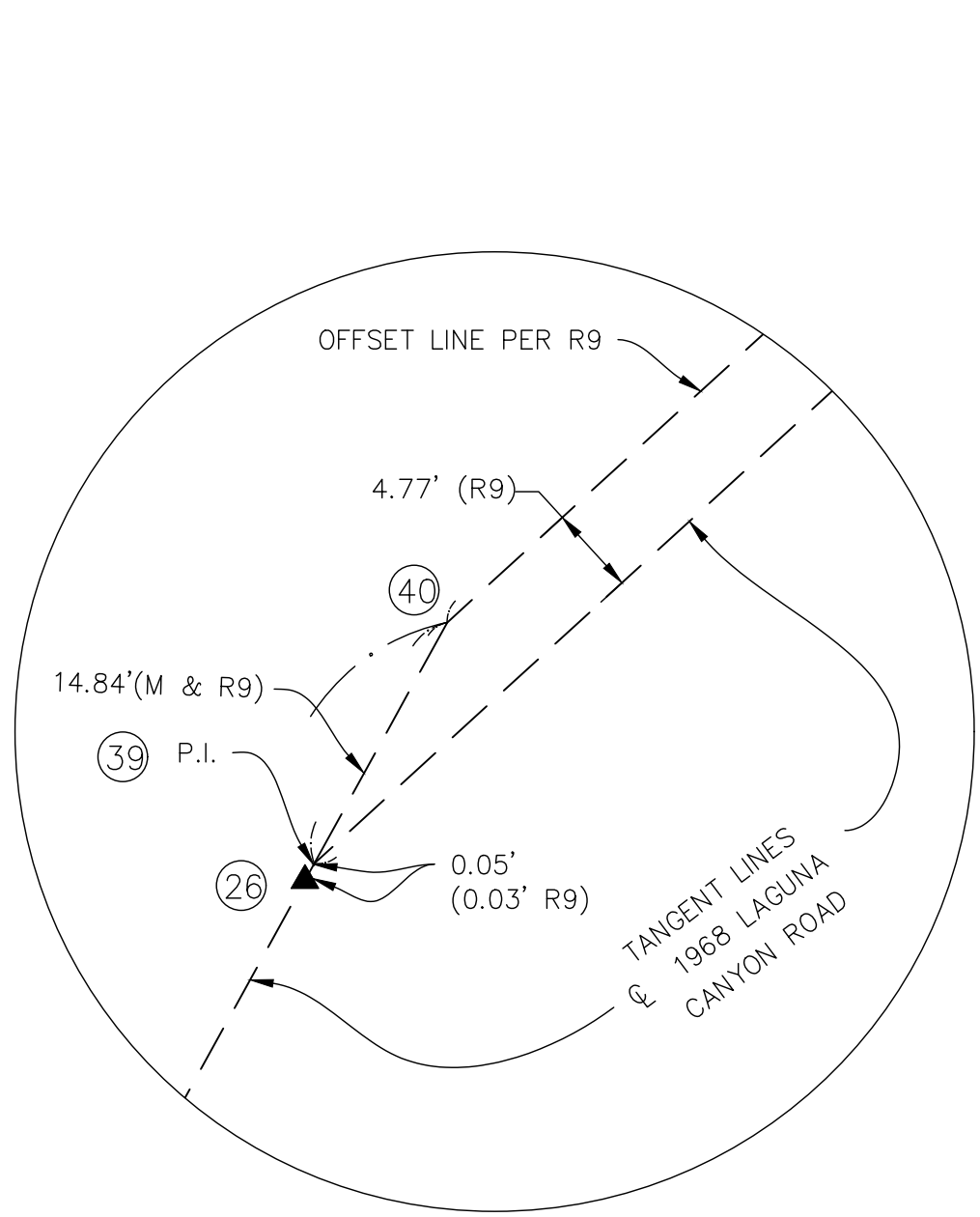
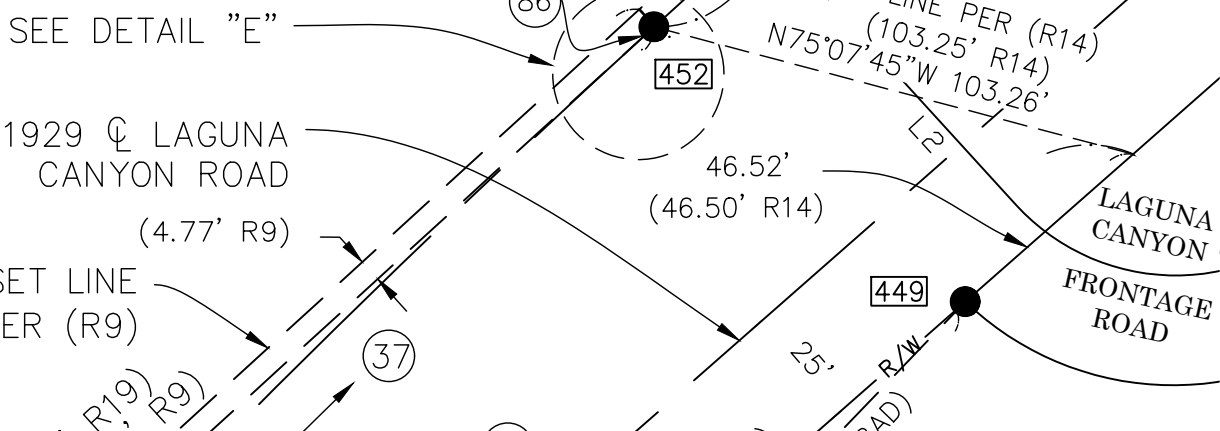
- FOUND MONUMENT AS NOTED
- ▲ ESTABLISHED BY TIES SEE ESTABLISHMENT NOTES

LINE TABLE

CL. ROADWAY	_____
SURVEY GEOMETRY	_____
STATE HIGHWAY RIGHT-OF-WAY	_____ R/W _____ R/W

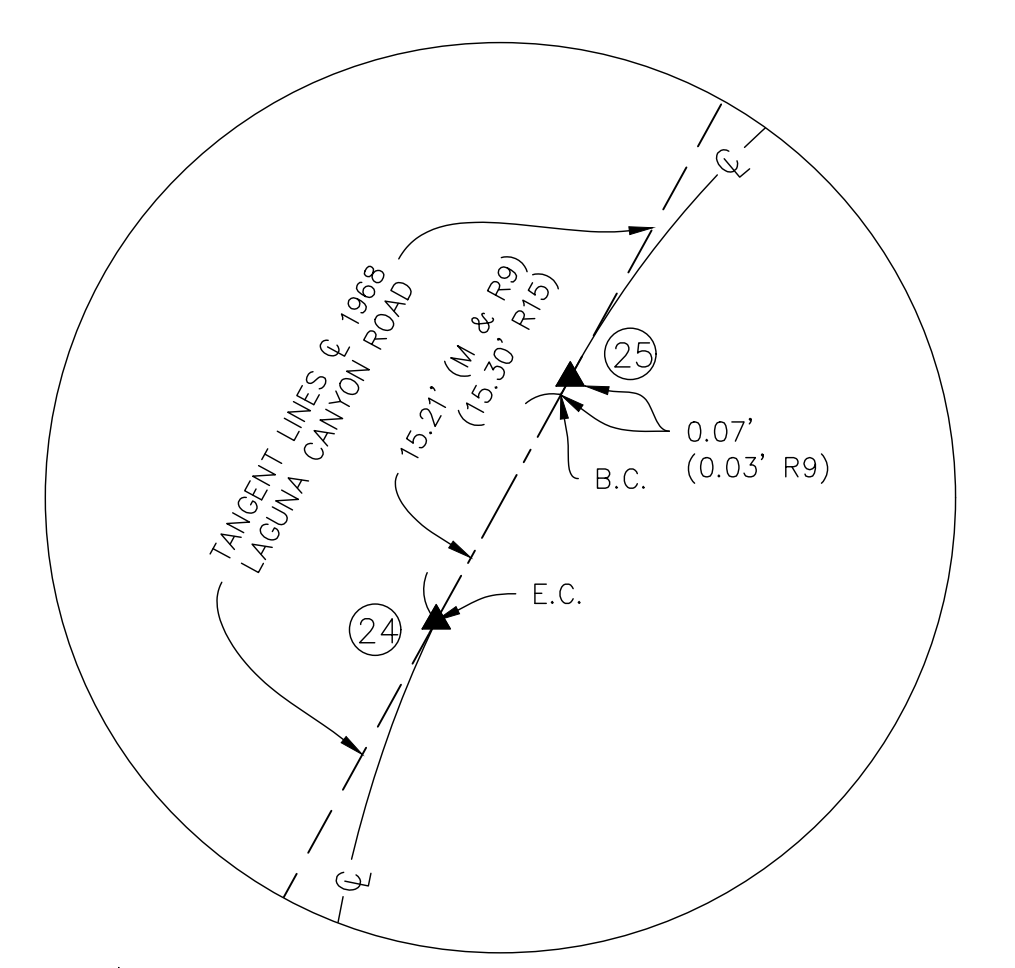
4		1/20/21	ADDITIONAL TOPO EAST OF THE CENTERLINE OF LAGUNA CANYON FRONTAGE ROAD & BETWEEN C/L ALIGNMENT STATIONS 16+00 & 28+50	COUNTY OF ORANGE OC PUBLIC WORKS OC SURVEY/FIELD SERVICES/BOUNDARY ANALYSIS & MAPPING	
3		12/5/20	ALIGNMENT UPDATE	LAGUNA CHANNEL (I02) CHANNEL MAINTENANCE PROJECT	
2		7/2/20	PTR UPDATE AT WOODLAND	TOPOGRAPHIC MAP	
1		1/29/20	TEXT UPDATES	FROM: FOREST AVE. TO: CANYON ACRES DRIVE	
MARK		DATE	ITEM	DATE OF SURVEY: NOV 2019	BY: T. LOFGREEN
				TOPOGRAPHIC MAPPING	BY: T. LOFGREEN / R. BELTRAN
				OFFICE CHECK	BY: M. KUBISTY, PLS.
				FIELD CHECK	BY: T. LOFGREEN
				SCALE: 1"=40' [W.O. #F21286] FILE NO.	
				FILE: LAGUNA_CHANNEL_BOUNDARY_PHASE II_2019.DWG	
REVISIONS				SHEET NO. 4 of 14	

SEE SHEET 6

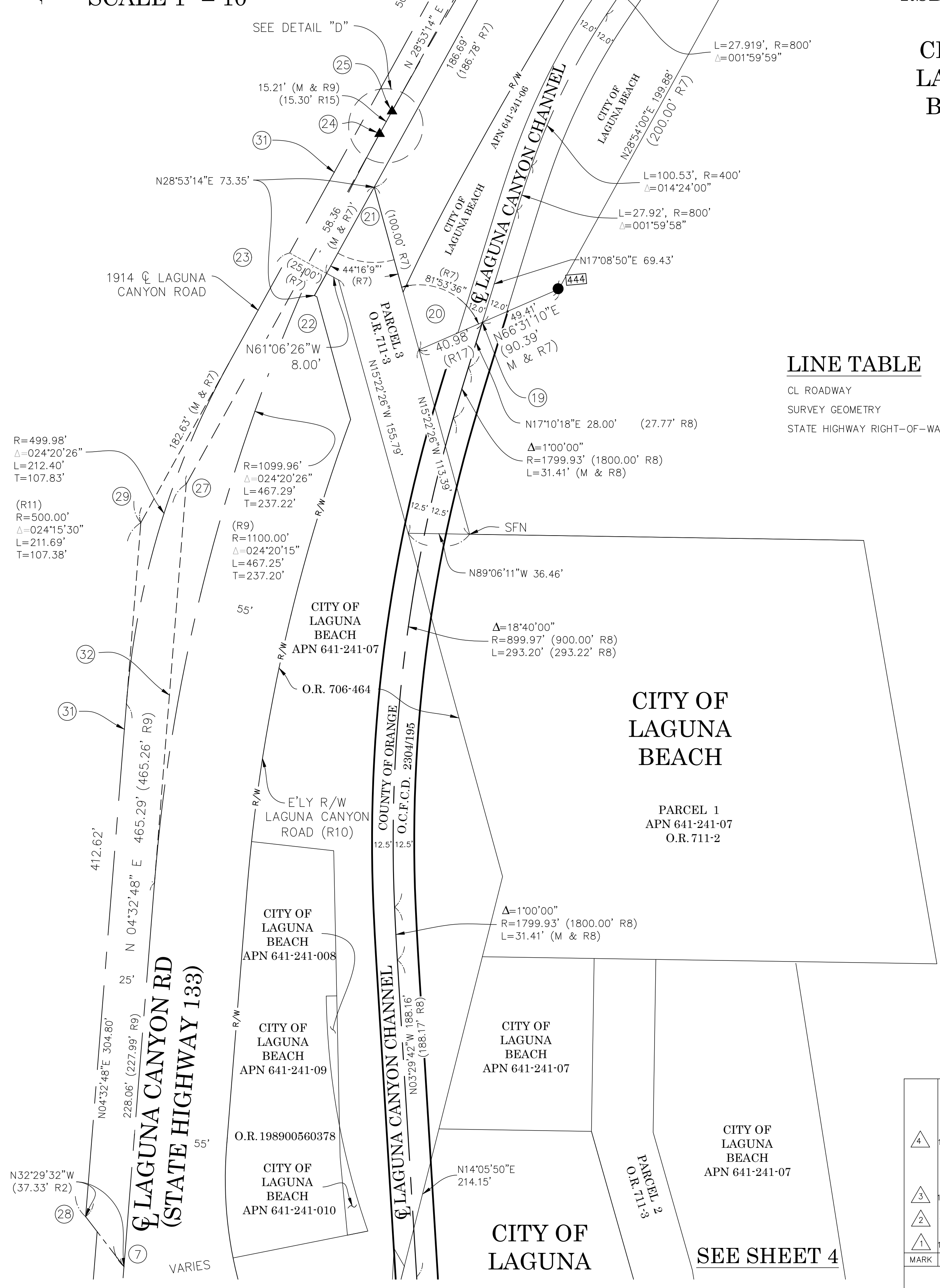


DETAIL "E"
SCALE 1" = 10'

DETAIL "C"
SCALE 1" = 10'



DETAIL "D"
SCALE 1" = 10'



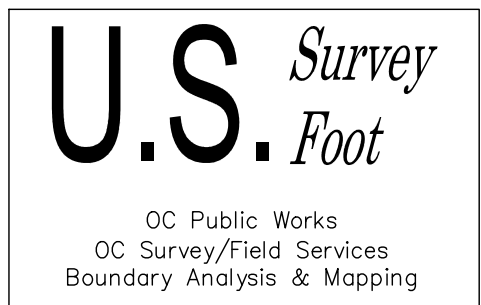
PARCEL 4
RSB 232/42-43
(R7)
CITY OF
LAGUNA
BEACH

BUENA
VIDA RSM
LLC

O.R. 20170051042

LINE TABLE

CL ROADWAY	
SURVEY GEOMETRY	
STATE HIGHWAY RIGHT-OF-WAY	



NOTE

PARCELS SHOWN WITHOUT BEARING AND DISTANCES ARE FOR GRAPHICAL PURPOSES ONLY.

LEGEND

- FOUND MONUMENT AS NOTED
- ▲ ESTABLISHED BY TIES SEE ESTABLISHMENT NOTES

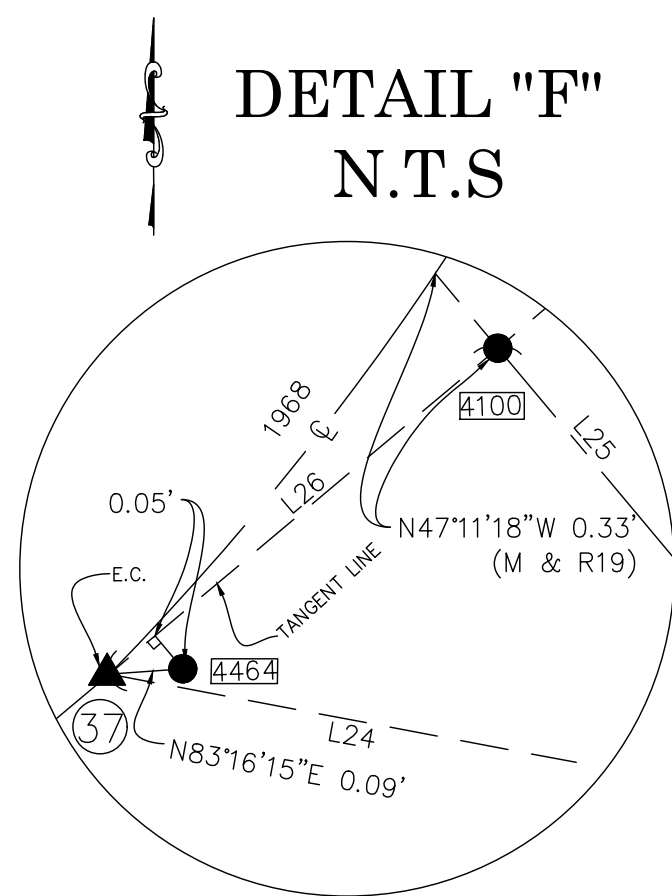
COUNTY OF ORANGE OC PUBLIC WORKS OC SURVEY/FIELD SERVICES/BOUNDARY ANALYSIS & MAPPING		LAGUNA CHANNEL (I02) CHANNEL MAINTENANCE PROJECT	
1/20/21		ADDITIONAL TOPO EAST OF THE CENTERLINE OF LAGUNA CANYON FRONTAGE ROAD & BETWEEN C/L ALIGNMENT STATIONS 16+00 & 28+50	
12/5/20		ALIGNMENT UPDATE	
7/2/20		PTR UPDATE AT WOODLAND	
1/29/20		TEXT UPDATES	
MARK	DATE	ITEM	
REVISIONS			
			FROM: FOREST AVE. TO: CANYON ACRES DRIVE DATE OF SURVEY: NOV 2019 TOPOGRAPHIC MAPPING OFFICE CHECK FIELD CHECK SCALE: 1"=40' W.O. #EF21286 FILE NO. FILE: LAGUNA_CHANNEL_BOUNDARY_PHASE II_2019.DWG
			BY: T. LOFGREEN BY: T. LOFGREEN/ R. BELTRAN BY: M. KUBISTY, PLS. BY: T. LOFGREEN
			SHEET NO. 5 of 14

CL ROADWAY _____

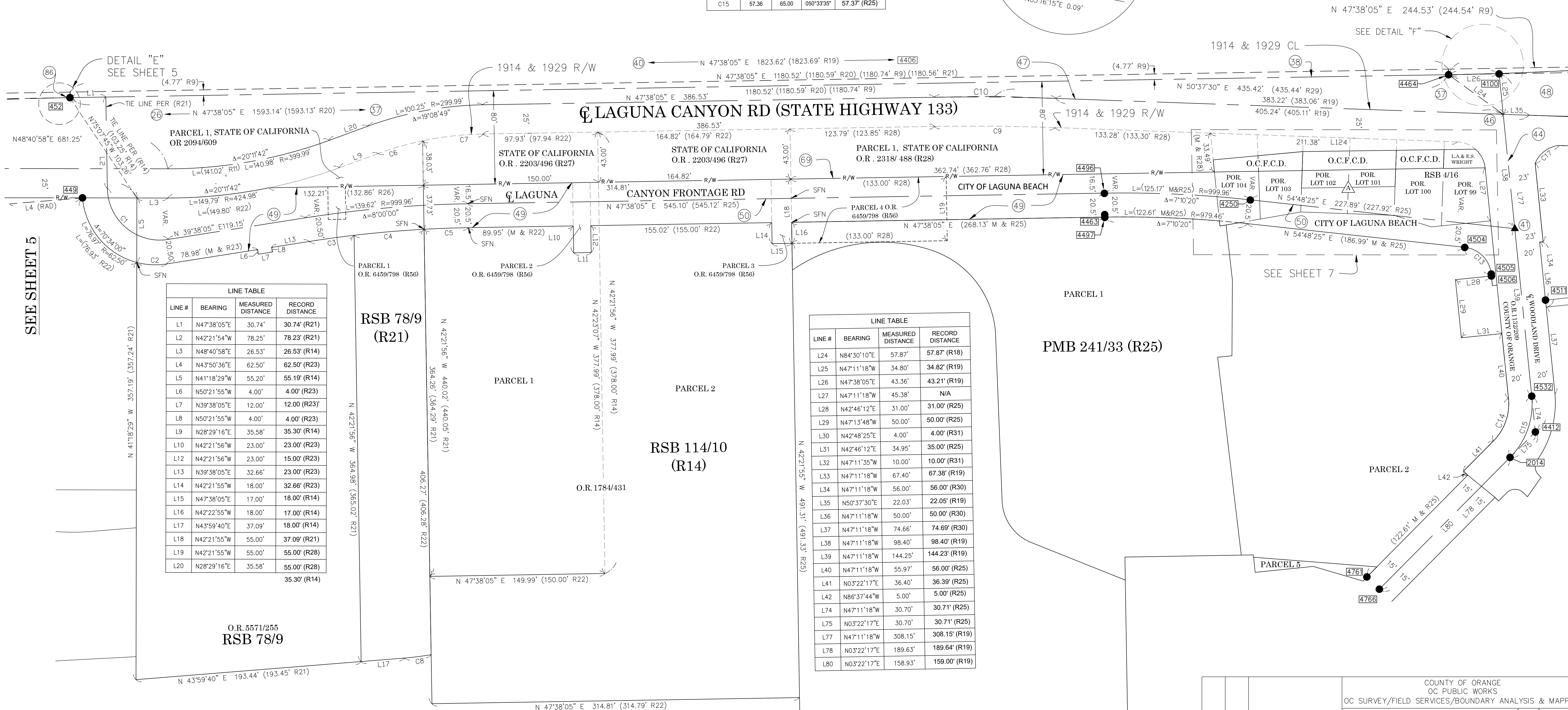
SURVEY GEOMETRY _____

STATE HIGHWAY RIGHT-OF-WAY _____ R/W _____ R/W _____

CURVE TABLE				
CURVE #	LENGTH	RADIUS	DELTA	RECORD DISTANCE
C1	76.97	45.00	098°00'00"	76.97' (R21)
C2	25.79	62.50	023°38'31"	25.83' (R14)
C3	38.76	979.46	002°16'02"	38.76' (R14)
C4	60.15	979.46	003°31'06"	60.16' (R14)
C5	37.85	979.46	002°12'52"	37.84' (R14)
C6	39.51	274.99	008°13'58"	39.74' (R14)
C7	52.38	274.99	010°54'50"	52.38' (R14)
C8	23.13	249.99	005°18'02"	23.13' (R21)
C9	103.08	1794.93	002°59'25"	102.98' (R28)
C10	104.38	1999.93	002°59'25"	104.43' (R19)
C11	34.86	25.61	078°00'00"	34.86' (R25)
C14	39.71	45.00	050°33'49"	39.72' (R25)
C15	57.36	65.00	050°33'35"	57.37' (R25)



SEE SHEET 7



LINE TABLE			
LINE #	BEARING	MEASURED DISTANCE	RECORD DISTANCE
L24	N84°30'10"E	57.87'	57.87' (R18)
L25	N47°11'18"W	34.80'	34.82' (R19)
L26	N47°38'05"E	43.36'	43.21' (R19)
L27	N47°11'18"W	45.38'	N/A
L28	N42°46'12"E	31.00'	31.00' (R25)
L29	N47°13'48"W	50.00'	50.00' (R25)
L30	N42°48'25"E	34.95'	4.00' (R31)
L31	N42°46'12"E	4.00'	35.00' (R25)
L32	N47°11'35"W	10.00'	10.00' (R31)
L33	N47°11'18"W	67.40'	67.38' (R19)
L34	N47°11'18"W	56.00'	56.00' (R30)
L35	N50°37'30"E	22.03'	22.05' (R19)
L36	N47°11'18"W	50.00'	50.00' (R30)
L37	N47°11'18"W	74.66'	74.69' (R30)
L38	N47°11'18"W	98.40'	98.40' (R19)
L39	N47°11'18"W	144.25'	144.23' (R19)
L40	N47°11'18"W	55.97'	56.00' (R25)
L41	N03°22'17"E	36.40'	36.39' (R25)
L42	N86°37'44"W	5.00'	5.00' (R25)
L74	N47°11'18"W	50.70'	30.71' (R25)
L75	N03°22'17"E	30.70'	30.71' (R25)
L77	N47°11'18"W	308.15'	308.15' (R19)
L78	N03°22'17"E	189.63'	189.64' (R19)
L80	N03°22'17"E	158.93'	159.00' (R19)

PROPOSED OPEN SPACE
TO BE DEDICATED TO
THE CITY OF LAGUNA BEACH

U.S. *Survey*
Foot

OC Public Works
OC Survey/Field Services
Boundary Analysis & Mapping

● FOUND MONUMENT AS NOTED
▲ ESTABLISHED BY TIES SEE ESTABLISHMENT NOTES

PARCELS SHOWN WITHOUT BEARING AND DISTANCES ARE FOR GRAPHICAL PURPOSES ONLY.

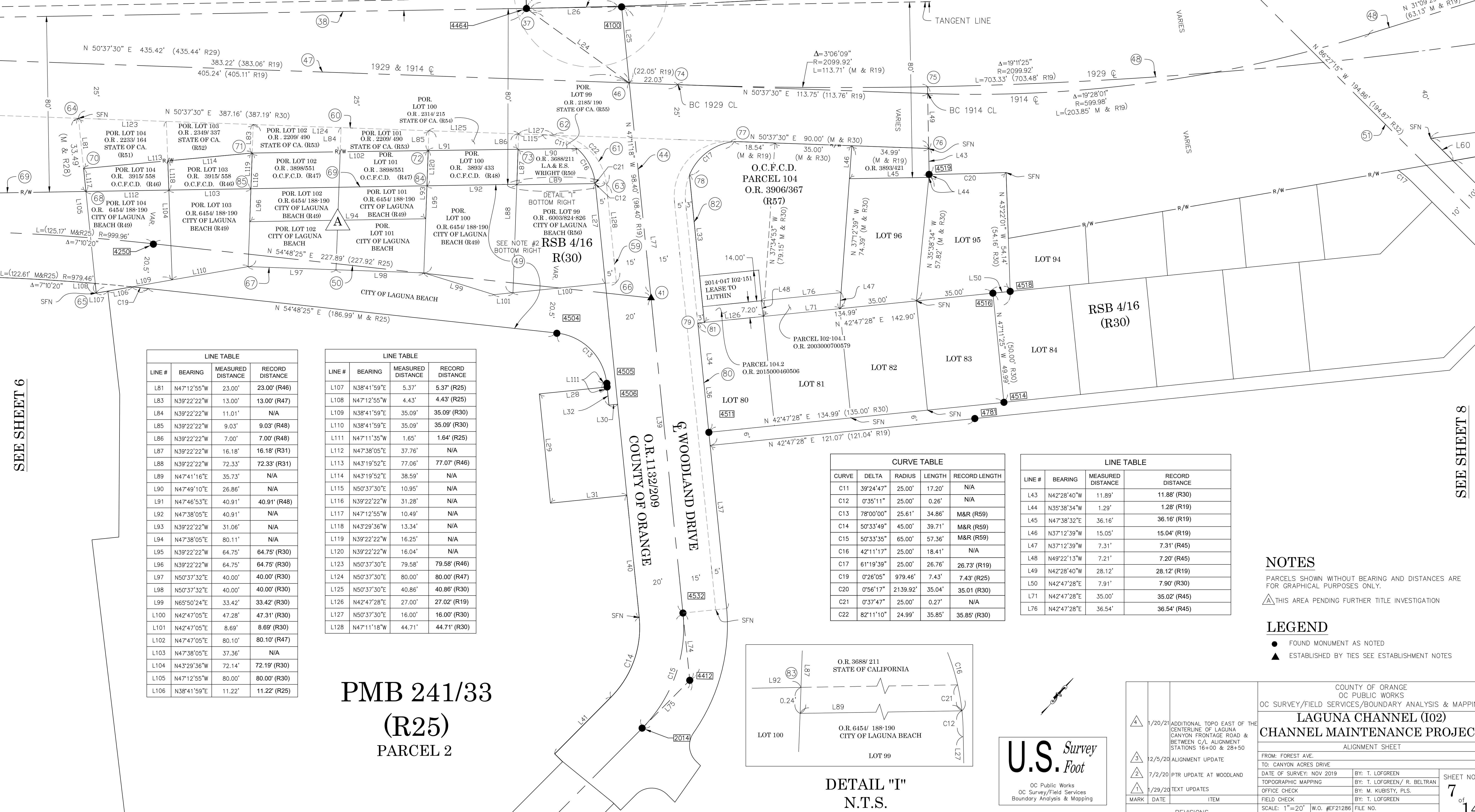
THIS AREA PENDING FURTHER TITLE INVESTIGATION

<div>4</div>	1/20/21	ADDITIONAL TOPO EAST OF THE CENTERLINE OF LAGUNA CANYON FRONTAGE ROAD & BETWEEN C/L ALIGNMENT STATIONS 16+00 & 28+50	COUNTY OF ORANGE OC PUBLIC WORKS OC SURVEY/FIELD SERVICES/BOUNDARY ANALYSIS & MAPPING		
			LAGUNA CHANNEL (I02) CHANNEL MAINTENANCE PROJECT		
			ALIGNMENT SHEET		
			FROM: FOREST AVE. TO: CANYON ACRES DRIVE		
<div>3</div>	12/5/20	ALIGNMENT UPDATE	DATE OF SURVEY: NOV 2019		BY: T. LOFGREEN
<div>2</div>	7/2/20	PTR UPDATE AT WOODLAND	TOPOGRAPHIC MAPPING		BY: T. LOFGREEN / R. BELTRAN
<div>1</div>	1/29/20	TEXT UPDATES	OFFICE CHECK		BY: M. KUBISTY, PLS.
MARK	DATE	ITEM	FIELD CHECK		BY: T. LOFGREEN
REVISIONS			SCALE: 1" = 40' W.O. #EF21286		FILE NO.
			FILE: LAGUNA_CHANNEL_BOUNDARY_PHASE II_2019.DWG		
					SHEET NO. 6 of 14

LINE TABLE

CL ROADWAY		
SURVEY GEOMETRY		
STATE HIGHWAY RIGHT-OF-WAY	R/W	R/W

LAGUNA CANYON ROAD
(STATE HIGHWAY 133)



SEE SHEET 6

SEE SHEET 8

LINE TABLE			
LINE #	BEARING	MEASURED DISTANCE	RECORD DISTANCE
L81	N47°12'55"W	23.00'	23.00' (R46)
L83	N39°22'22"W	13.00'	13.00' (R47)
L84	N39°22'22"W	11.01'	N/A
L85	N39°22'22"W	9.03'	9.03' (R48)
L86	N39°22'22"W	7.00'	7.00' (R48)
L87	N39°22'22"W	16.18'	16.18' (R31)
L88	N39°22'22"W	72.33'	72.33' (R31)
L89	N47°41'16"E	35.73'	N/A
L90	N47°49'10"E	26.86'	N/A
L91	N47°46'53"E	40.91'	40.91' (R48)
L92	N47°38'05"E	40.91'	N/A
L93	N39°22'22"W	31.06'	N/A
L94	N47°38'05"E	80.11'	N/A
L95	N39°22'22"W	64.75'	64.75' (R30)
L96	N39°22'22"W	64.75'	64.75' (R30)
L97	N50°37'32"E	40.00'	40.00' (R30)
L98	N50°37'32"E	40.00'	40.00' (R30)
L99	N65°50'24"E	33.42'	33.42' (R30)
L100	N42°47'05"E	47.28'	47.31' (R30)
L101	N42°47'05"E	8.69'	8.69' (R30)
L102	N47°47'05"E	80.10'	80.10' (R47)
L103	N47°38'05"E	37.36'	N/A
L104	N43°29'36"W	72.14'	72.19' (R30)
L105	N47°12'55"W	80.00'	80.00' (R30)
L106	N38°41'59"E	11.22'	11.22' (R25)

LINE TABLE			
LINE #	BEARING	MEASURED DISTANCE	RECORD DISTANCE
L107	N38°41'59"E	5.37'	5.37' (R25)
L108	N47°12'55"W	4.43'	4.43' (R25)
L109	N38°41'59"E	35.09'	35.09' (R30)
L110	N38°41'59"E	35.09'	35.09' (R30)
L111	N47°11'35"W	1.65'	1.64' (R25)
L112	N47°38'05"E	37.76'	N/A
L113	N43°19'52"E	77.06'	77.07' (R46)
L114	N43°19'52"E	38.59'	N/A
L115	N50°37'30"E	10.95'	N/A
L116	N39°22'22"W	31.28'	N/A
L117	N47°12'55"W	10.49'	N/A
L118	N43°29'36"W	13.34'	N/A
L119	N39°22'22"W	16.25'	N/A
L120	N39°22'22"W	16.04'	N/A
L123	N50°37'30"E	79.58'	79.58' (R46)
L124	N50°37'30"E	80.00'	80.00' (R47)
L125	N50°37'30"E	40.86'	40.86' (R30)
L126	N42°47'28"E	27.00'	27.02' (R19)
L127	N50°37'30"E	16.00'	16.00' (R30)
L128	N47°11'18"W	44.71'	44.71' (R30)

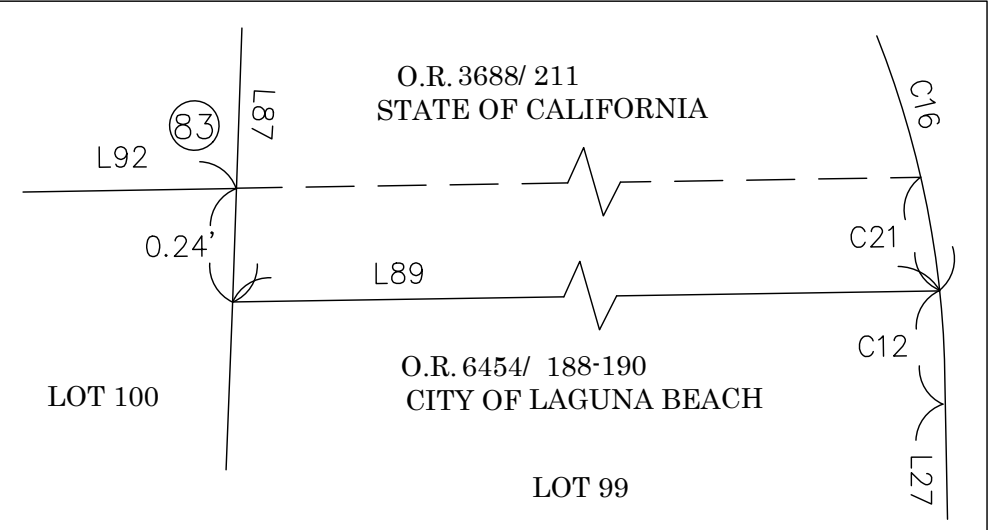
PMB 241/33
(R25)
PARCEL 2

CURVE TABLE				
CURVE	DELTA	RADIUS	LENGTH	RECORD LENGTH
C11	39°24'47"	25.00'	17.20'	N/A
C12	0°35'11"	25.00'	0.26'	N/A
C13	78°00'00"	25.61'	34.86'	M&R (R59)
C14	50°33'49"	45.00'	39.71'	M&R (R59)
C15	50°33'35"	65.00'	57.36'	M&R (R59)
C16	42°11'17"	25.00'	18.41'	N/A
C17	61°19'39"	25.00'	26.76'	26.73' (R19)
C19	0°26'05"	979.46'	7.43'	7.43' (R25)
C20	0°56'17"	2139.92'	35.04'	35.01' (R30)
C21	0°37'47"	25.00'	0.27'	N/A
C22	82°11'10"	24.99'	35.85'	35.85' (R30)

LINE TABLE			
LINE #	BEARING	MEASURED DISTANCE	RECORD DISTANCE
L43	N42°28'40"W	11.89'	11.88' (R30)
L44	N35°38'34"W	1.29'	1.28' (R19)
L45	N47°38'32"E	36.16'	36.16' (R19)
L46	N37°12'39"W	15.05'	15.04' (R19)
L47	N37°12'39"W	7.31'	7.31' (R45)
L48	N49°22'13"W	7.21'	7.20' (R45)
L49	N42°28'40"W	28.12'	28.12' (R19)
L50	N42°47'28"E	7.91'	7.90' (R30)
L71	N42°47'28"E	35.00'	35.02' (R45)
L76	N42°47'28"E	36.54'	36.54' (R45)

NOTES
PARCELS SHOWN WITHOUT BEARING AND DISTANCES ARE FOR GRAPHICAL PURPOSES ONLY.
THIS AREA PENDING FURTHER TITLE INVESTIGATION

LEGEND
● FOUND MONUMENT AS NOTED
▲ ESTABLISHED BY TIES SEE ESTABLISHMENT NOTES



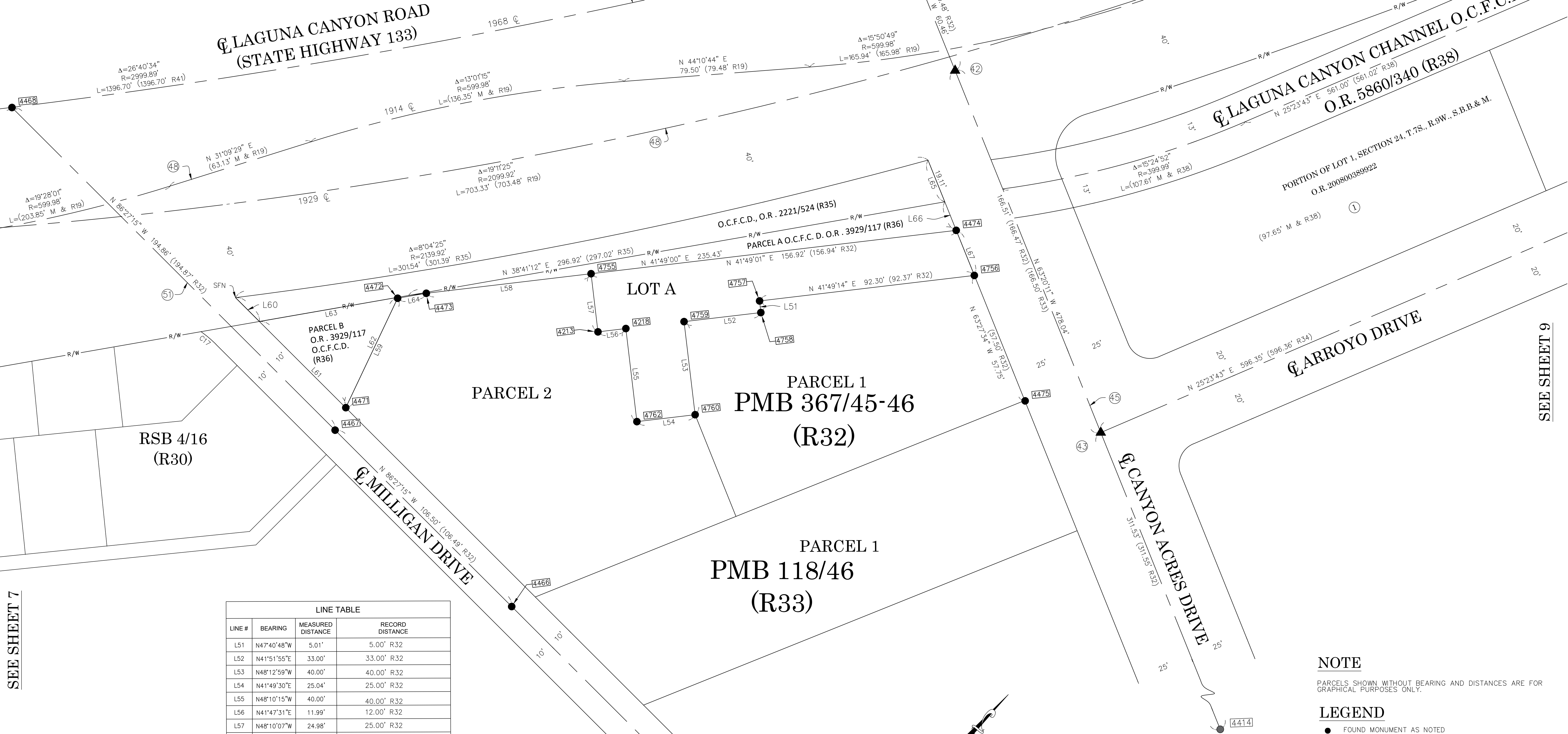
DETAIL "I"
N.T.S.

U.S. Survey
OC Public Works
OC Survey/Field Services
Boundary Analysis & Mapping

		COUNTY OF ORANGE OC PUBLIC WORKS	
		OC SURVEY/FIELD SERVICES/BOUNDARY ANALYSIS & MAPPING	
		LAGUNA CHANNEL (I02) CHANNEL MAINTENANCE PROJECT	
		ALIGNMENT SHEET	
		FROM: FOREST AVE. TO: CANYON ACRES DRIVE	
		DATE OF SURVEY: NOV 2019	BY: T. LOFGREEN
		TOPOGRAPHIC MAPPING	BY: T. LOFGREEN / R. BELTRAN
		OFFICE CHECK	BY: M. KUBISTY, PLS.
		FIELD CHECK	BY: T. LOFGREEN
		SCALE: 1"=20'	W.O. #EF21286 FILE NO.
		FILE: LAGUNA_CHANNEL_BOUNDARY_PHASE_1_2019.DWG	
		SHEET NO. 7 of 14	

LINE TABLE

CL ROADWAY		
SURVEY GEOMETRY		
STATE HIGHWAY RIGHT-OF-WAY	R/W	R/W



SEE SHEET 7

SEE SHEET 9

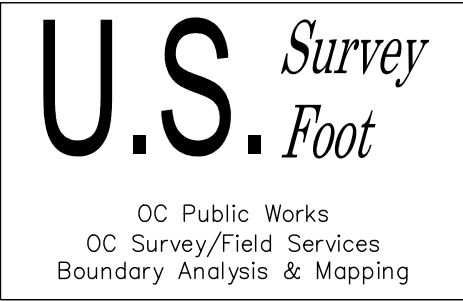
LINE TABLE			
LINE #	BEARING	MEASURED DISTANCE	RECORD DISTANCE
L51	N47°40'48"W	5.01'	5.00' R32
L52	N41°51'55"E	33.00'	33.00' R32
L53	N48°12'59"W	40.00'	40.00' R32
L54	N41°49'30"E	25.04'	25.00' R32
L55	N48°10'15"W	40.00'	40.00' R32
L56	N41°47'31"E	11.99'	12.00' R32
L57	N48°10'07"W	24.98'	25.00' R32
L58	N41°48'59"E	70.81'	70.75' R32
L59	N16°03'08"W	51.69'	51.70' R32
L60	N86°27'15"W	14.39'	14.39' R35
L61	S86°27'15"E	52.07'	52.00' R36
L62	N16°03'09"W	52.15'	52.08' R33
L63	N38°41'12"E	60.08'	60.00' R36
L64	N38°48'04"E	12.42'	12.46' R32
L65	N63°20'11"W	19.17'	19.11' R35
L66	N63°20'11"W	13.12'	12.78' R33
L67	N63°20'11"W	20.73'	20.72' R32

NOTE

PARCELS SHOWN WITHOUT BEARING AND DISTANCES ARE FOR GRAPHICAL PURPOSES ONLY.

LEGEND

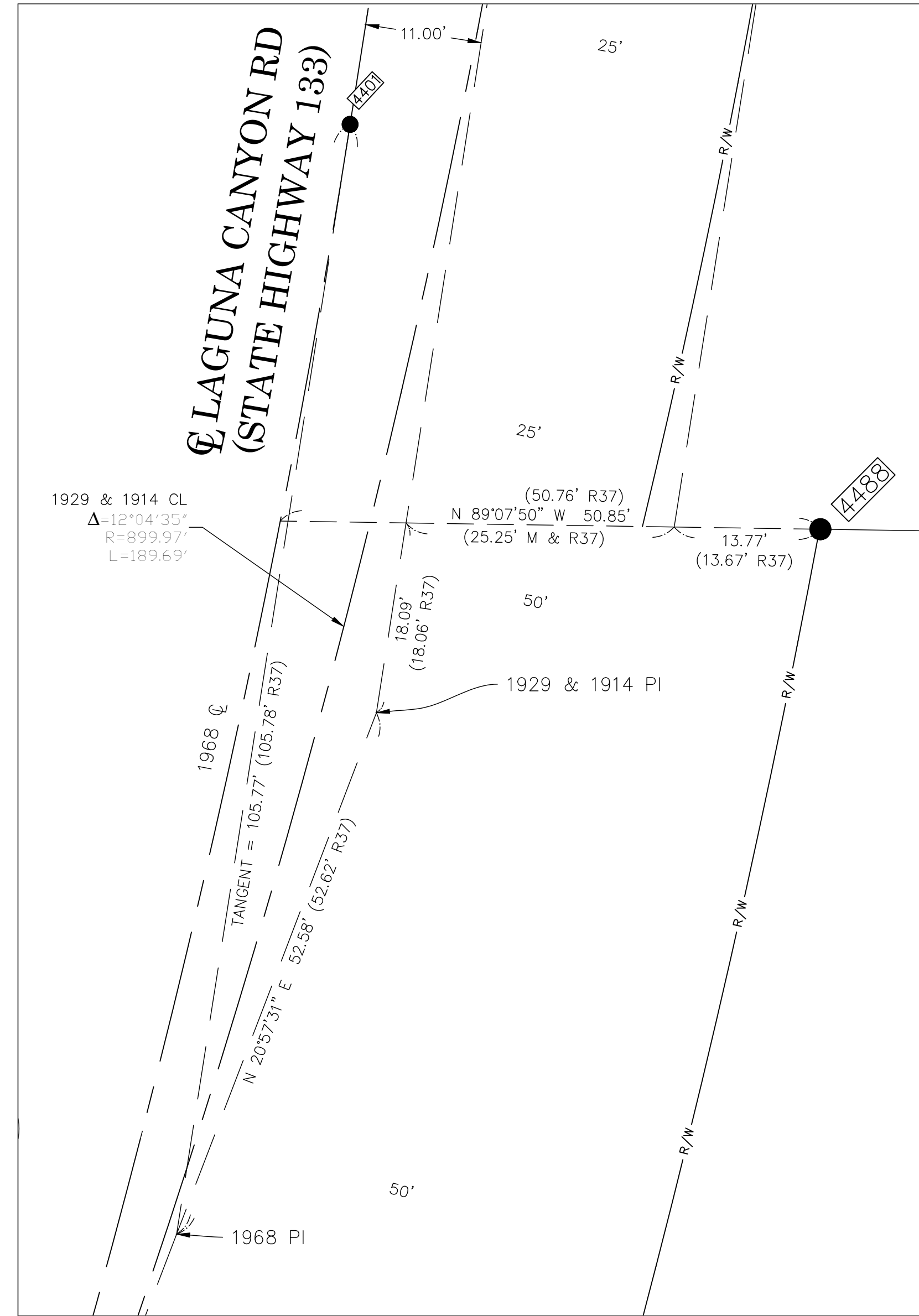
- FOUND MONUMENT AS NOTED
- ▲ ESTABLISHED BY TIES SEE ESTABLISHMENT NOTES



COUNTY OF ORANGE OC PUBLIC WORKS OC SURVEY/FIELD SERVICES/BOUNDARY ANALYSIS & MAPPING			
LAGUNA CHANNEL (I02) CHANNEL MAINTENANCE PROJECT			
ALIGNMENT SHEET			
FROM: FOREST AVE. TO: CANYON ACRES DRIVE			
1/20/21	ADDITIONAL TOPO EAST OF THE CENTERLINE OF LAGUNA CANYON FRONTAGE ROAD & BETWEEN C/L ALIGNMENT STATIONS 16+00 & 28+50	DATE OF SURVEY: NOV 2019	BY: T. LOFGREEN
12/5/20	ALIGNMENT UPDATE	TOPOGRAPHIC MAPPING	BY: T. LOFGREEN/ R. BELTRAN
7/2/20	PTR UPDATE AT WOODLAND	OFFICE CHECK	BY: M. KUBISTY, PLS.
1/29/20	TEXT UPDATES	FIELD CHECK	BY: T. LOFGREEN
MARK	DATE	ITEM	SCALE: 1"=20' W.O. #EF21286 FILE NO.
REVISIONS			FILE: LAGUNA_CHANNEL_BOUNDARY_PHASE II_2019.DWG

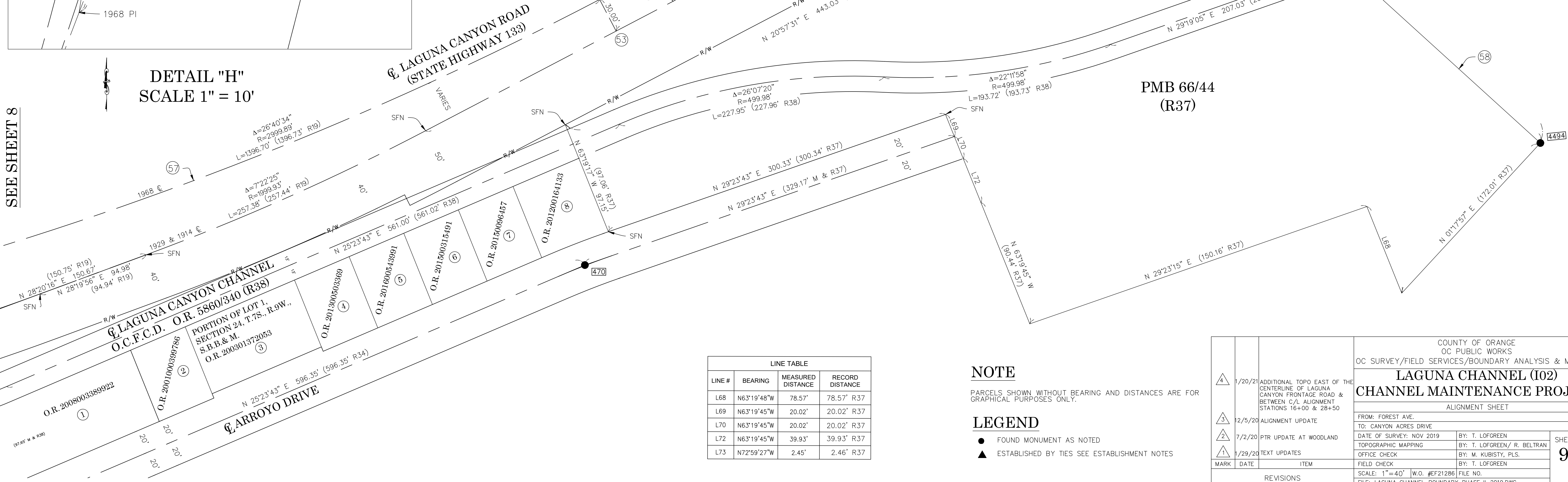
LINE TABLE

CL ROADWAY	
SURVEY GEOMETRY	
STATE HIGHWAY RIGHT-OF-WAY	R/W R/W



DETAIL "H"
SCALE 1" = 10'

SEE SHEET 8



LINE TABLE			
LINE #	BEARING	MEASURED DISTANCE	RECORD DISTANCE
L68	N63°19'48"W	78.57'	78.57' R37
L69	N63°19'45"W	20.02'	20.02' R37
L70	N63°19'45"W	20.02'	20.02' R37
L72	N63°19'45"W	39.93'	39.93' R37
L73	N72°59'27"W	2.45'	2.46' R37

NOTE

PARCELS SHOWN WITHOUT BEARING AND DISTANCES ARE FOR GRAPHICAL PURPOSES ONLY.

LEGEND

- FOUND MONUMENT AS NOTED
- ▲ ESTABLISHED BY TIES SEE ESTABLISHMENT NOTES

COUNTY OF ORANGE OC PUBLIC WORKS OC SURVEY/FIELD SERVICES/BOUNDARY ANALYSIS & MAPPING			
LAGUNA CHANNEL (I02) CHANNEL MAINTENANCE PROJECT			
ALIGNMENT SHEET			
FROM: FOREST AVE. TO: CANYON ACRES DRIVE			
1/20/21	4	ADDITIONAL TOPO EAST OF THE CENTERLINE OF LAGUNA CANYON FRONTAGE ROAD & BETWEEN C/L ALIGNMENT STATIONS 16+00 & 28+50	SHEET NO. 9 of 14
12/5/20	3	ALIGNMENT UPDATE	
7/2/20	2	PTR UPDATE AT WOODLAND	
1/29/20	1	TEXT UPDATES	
MARK	DATE	ITEM	
REVISIONS			FILE: LAGUNA_CHANNEL_BOUNDARY_PHASE_1L_2019.DWG

CURVE TABLE						
CURVE #	DELTA	RADIUS	LENGTH	RECORD DELTA	RECORD RADIUS	RECORD LENGTH
C1	12°07'54"	1499.98'	317.60'	(12°07'55" R60)	(1500.00' R60)	(317.62' R60)
C2	5°50'58"	1999.97'	204.18'	(M&R R60)	(2000.00' R60)	(M&R R60)
C3	5°30'42"	2999.89'	288.57'	- - - -	- - - -	- - - -
C4	3°47'31"	2999.89'	198.54'	- - - -	- - - -	- - - -
C5	3°41'13"	2999.89'	193.04'	- - - -	- - - -	- - - -
C6	9°54'17"	2499.91'	432.16'	- - - -	- - - -	- - - -

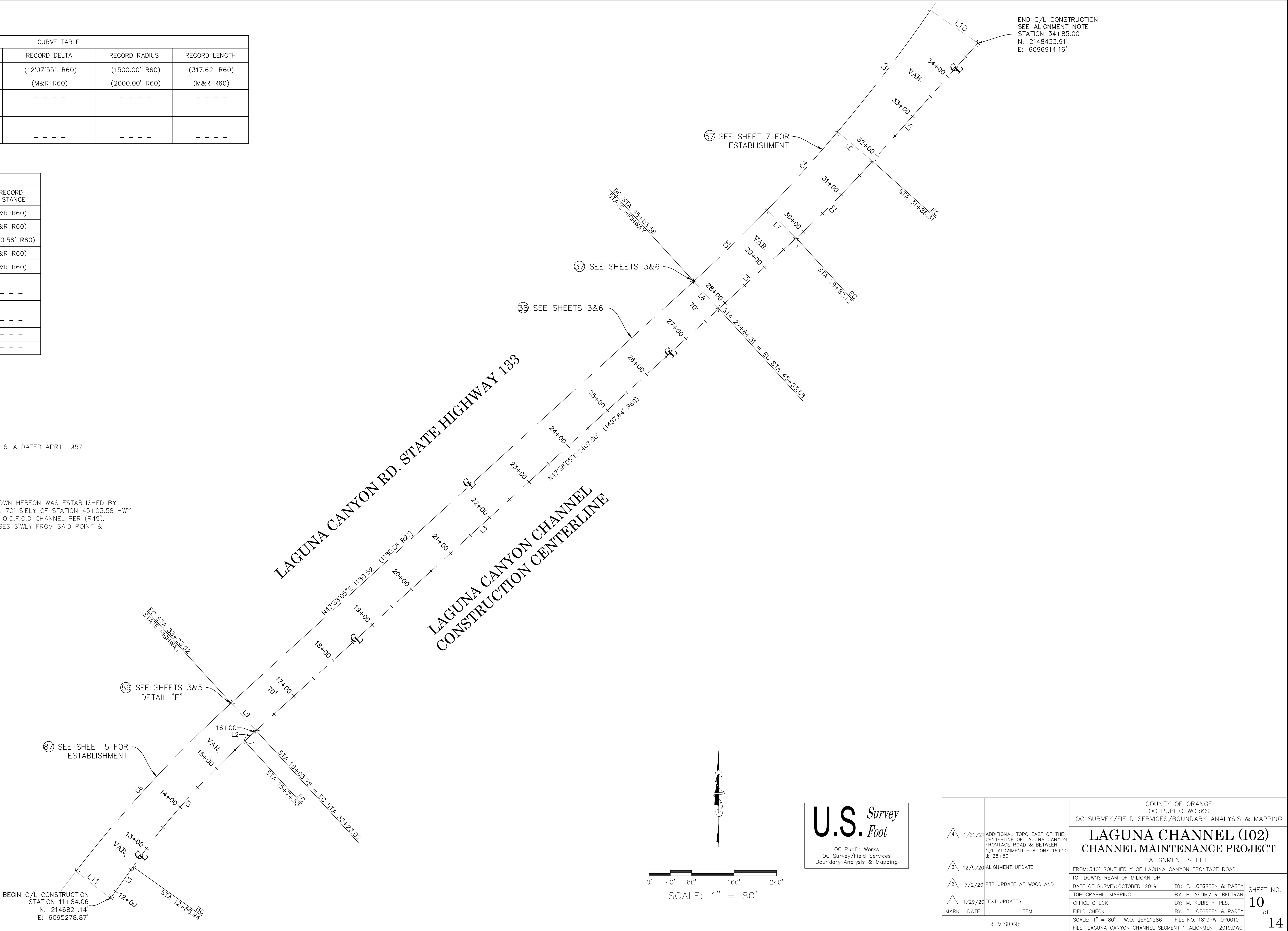
LINE TABLE			
LINE #	BEARING	MEASURED DISTANCE	RECORD DISTANCE
L1	N35°30'10"E	72.87'	(M&R R60)
L2	N47°38'05"E	29.26'	(M&R R60)
L3	N47°38'05"E	1180.51'	(1180.56' R60)
L4	N47°38'05"E	197.82'	(M&R R60)
L5	N41°47'07"E	298.69'	(M&R R60)
L6	N49°50'40"W	85.84'	- - - -
L7	N46°03'08"W	76.37'	- - - -
L8	N42°21'55"W	70.00'	- - - -
L9	N42°22'27"W	70.00'	- - - -
L10	N55°21'21"W	108.70'	- - - -
L11	N52°16'12"W	82.79'	- - - -

REFERENCES

(R21) = RECORD OF SURVEY RSB 78/9
(R60) = RECORD DRAWING NO. 102-101-6-A DATED APRIL 1957

ALIGNMENT NOTE

THE C/L CONSTRUCTION ALIGNMENT SHOWN HEREON WAS ESTABLISHED BY HOLDING A POINT PERPENDICULAR TO & 70' S'ELY OF STATION 45+03.58 HWY 133 WHICH IS EQUAL TO 27+84.31 C/L O.C.F.C.D CHANNEL PER (R49). STATIONING INCREASES N'LY & DECREASES S'WLY FROM SAID POINT & PARALLELS SAID C/L OF HWY.



			COUNTY OF ORANGE OC PUBLIC WORKS OC SURVEY/FIELD SERVICES/BOUNDARY ANALYSIS & MAPPING			
			LAGUNA CHANNEL (I02) CHANNEL MAINTENANCE PROJECT			
			ALIGNMENT SHEET			
			FROM: 340' SOUTHERLY OF LAGUNA CANYON FRONTAGE ROAD TO: DOWNSTREAM OF MILIGAN DR.			
<div>1/20/21</div> <div>3</div> <div>12/5/20</div> <div>2</div> <div>7/2/20</div> <div>1/29/20</div> <div>MARK</div> <div>DATE</div> <div>ITEM</div>	<div>ADDITIONAL TOPO EAST OF THE CENTERLINE OF LAGUNA CANYON FRONTAGE ROAD & BETWEEN C/L ALIGNMENT STATIONS 16+00 & 28+50</div> <div>ALIGNMENT UPDATE</div> <div>PTR UPDATE AT WOODLAND</div> <div>TEXT UPDATES</div> <div></div>	DATE OF SURVEY: OCTOBER, 2019		BY: T. LOFGREEN & PARTY		
		TOPOGRAPHIC MAPPING		BY: H. AFTIM/ R. BELTRAN		
		OFFICE CHECK		BY: M. KUBISTY, PLS.		
		FIELD CHECK		BY: T. LOFGREEN & PARTY		
REVISIONS			SCALE: 1" = 80'	W.O. #F21286	FILE NO. 1819PW-OP0010	FILE: LAGUNA CANYON CHANNEL SEGMENT 1_ALIGNMENT_2019.DWG

SHEET NO.
10
of
14

LEGEND

SYMBOL PATTERN KEY

- 4" Pipe Inlet / Pipe Outlet Unless Otherwise Noted
- Vault - Electrical
- Steel Sign
- Water Meter
- Sewer Manhole
- Single Light Pole
- Water Valve
- Pull box - Electrical
- Fire Hydrant
- Tree
- Storm Drain Manhole
- Vault Undefined
- Steel Grate Inlet
- Telephone Pull Box
- Gas Valve
- TV Cable Control Box
- Catch Basin
- Double Gate
- Sewer Clean Out
- Drop Inlet
- Electric Meter
- Irrigation Pull Box
- Irrigation Valve
- Plastic Electric Outlet Box
- Plastic Yard Light
- Gas Meter
- Undefined Control Box
- Bush
- Double Light Pole
- Electric Manhole
- Undefined Parking Meter
- Rock - Boulder
- Temporary Support Beam For Shoring
- Utility Pole
- Palm Tree
- Mail Box
- Post
- Water Vault
- Guy Anchor
- Telephone Vault
- Sign Board
- Warning Sign

LINE PATTERN KEY

- Edge of Asphalt Pavement
- Edge of Concrete Pavement
- Guard Rail Steel
- Flowline
- Street Striping
- Concrete Wall
- Undefined Wall
- Wood Fence
- Hand Rail Steel
- Building
- Chain Link Fence
- Wrought Iron Fence
- Dirt Hinge Point
- Exposed Pipe
- (C/L Construction Per This Survey See Alignment Note Sheet 10)
- (County of Orange Flood Control District Eastment)
- (County Of Orange Right of way)
- Caltrans Easment
- Caltrans Right Of Way
- (City of Laguna Beach Right Of Way)

ABBREVIATION

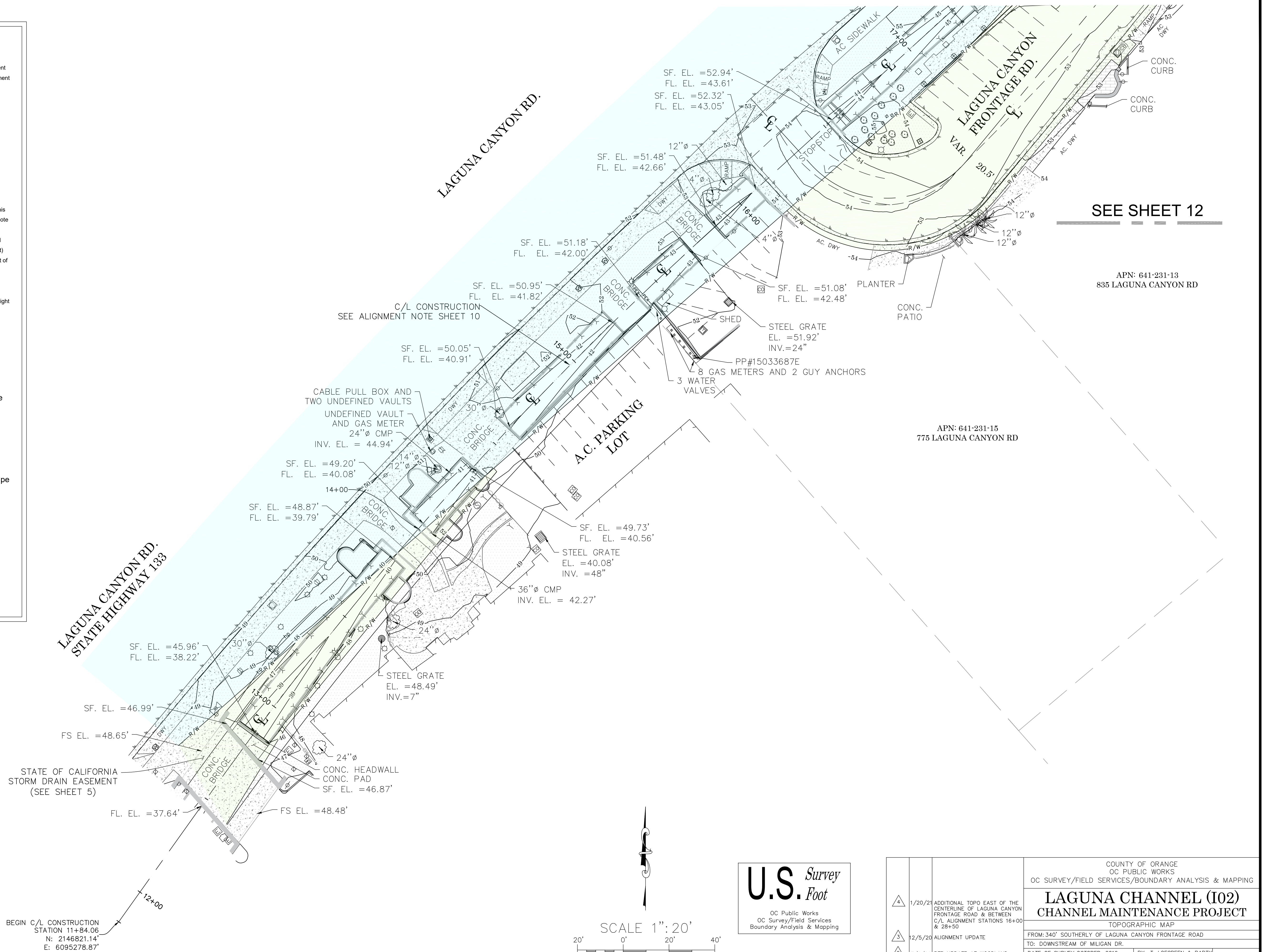
- AC Asphalt Concrete
- BC Beginning of Curve
- CONC Concrete
- CP Control Point
- CMP Corrugated Metal Pipe
- EL Elevation
- EC End of Curve
- FL Flowline
- INV Invert
- SF Soffit
- RCP Reinforce Concrete Pipe
- DWY DRIVEWAY
- LA LANDSCAPE AREA

AREA PATTERN KEY

- Caltrans Right Of Way
- City of Laguna Beach Right Of Way
- County Of Orange Right of way
- O.R. 3688/211 see sheet 7

AREA PATTERN KEY

- Concrete
- Dirt
- Brick



SEE SHEET 12

APN: 641-231-13
835 LAGUNA CANYON RD

APN: 641-231-15
775 LAGUNA CANYON RD

U.S. Survey
Foot
OC Public Works
OC Survey/Field Services
Boundary Analysis & Mapping

SCALE 1" = 20'
GRAPHIC SCALE

			COUNTY OF ORANGE OC PUBLIC WORKS OC SURVEY/FIELD SERVICES/BOUNDARY ANALYSIS & MAPPING		
			LAGUNA CHANNEL (I02) CHANNEL MAINTENANCE PROJECT		
			TOPOGRAPHIC MAP		
			FROM: 340' SOUTHERLY OF LAGUNA CANYON FRONTAGE ROAD TO: DOWNSTREAM OF MILIGAN DR.		
			DATE OF SURVEY: OCTOBER, 2019 TOPOGRAPHIC MAPPING	BY: T. LOFGREEN & PARTY BY: H. AFTIM / R. BELTRAN	SHEET NO. 11 of 14
			OFFICE CHECK	BY: M. KUBISTY, PLS.	
			FIELD CHECK	BY: T. LOFGREEN & PARTY	
			SCALE: 1" = 20' W.O. #EF21286 FILE NO. 1819PW-0P0010 FILE: LAGUNA CANYON CHANNEL SEGMENT 1_TOPO_2019.DWG		
			REVISIONS		
			1/20/21	ADDITIONAL TOPO EAST OF THE CENTERLINE OF LAGUNA CANYON FRONTAGE ROAD & BETWEEN C/L ALIGNMENT STATIONS 16+00 & 28+50	
			12/5/20	ALIGNMENT UPDATE	
			7/2/20	PTR UPDATE AT WOODLAND	
			1/29/20	TEXT UPDATES	
			MARK	DATE	ITEM

LEGEND

SYMBOL PATTERN KEY

- 4" Pipe Inlet / Pipe Outlet Unless Otherwise Noted
- Vault - Electrical
- Steel Sign
- Water Meter
- Sewer Manhole
- Single Light Pole
- Water Valve
- Pull box - Electrical
- Fire Hydrant
- Tree
- Storm Drain Manhole
- Vault Undefined
- Steel Grate Inlet
- Telephone Pull Box
- Gas Valve
- TV Cable Control Box
- Catch Basin
- Double Gate
- Sewer Clean Out
- Drop Inlet
- Electric Meter
- Irrigation Pull Box
- Irrigation Valve
- Plastic Electric Outlet Box
- Plastic Yard Light
- Gas Meter
- Undefined Control Box
- Bush
- Double Light Pole
- Electric Manhole
- Undefined Parking Meter
- Rock - Boulder
- Temporary Support Beam For Shoring
- Utility Pole
- Palm Tree
- Mail Box
- Post
- Water Vault
- Guy Anchor
- Telephone Vault
- Sign Board
- Warning Sign

LINE PATTERN KEY

- Edge of Asphalt Pavement
- Edge of Concrete Pavement
- Guard Rail Steel
- Flowline
- Street Striping
- Concrete Wall
- Undefined Wall
- Wood Fence
- Hand Rail Steel
- Building
- Chain Link Fence
- Wrought Iron Fence
- Dirt Hinge Point
- Exposed Pipe
- (C/L Construction Per This Survey See Alignment Note Sheet 10)
- (County of Orange Flood Control District Eastment)
- (County Of Orange Right of way)
- Caltrans Easment
- Caltrans Right Of Way
- (City of Laguna Beach Right Of Way)

ABBREVIATION

- AC Asphalt Concrete
- BC Beginning of Curve
- CONC Concrete
- CP Control Point
- CMP Corrugated Metal Pipe
- EL Elevation
- EC End of Curve
- FL Flowline
- INV Invert
- SF Soffit
- RCP Reinforce Concrete Pipe
- DWY DRIVEWAY
- LA LANDSCAPE AREA

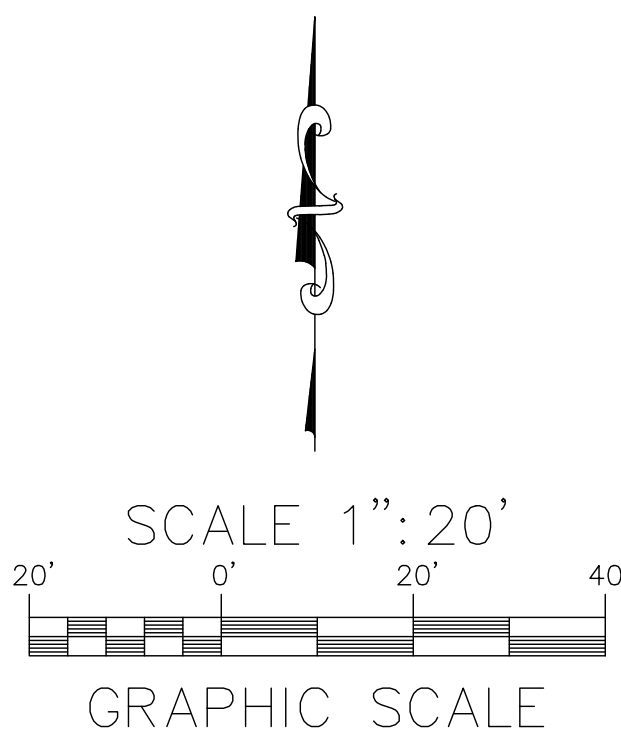
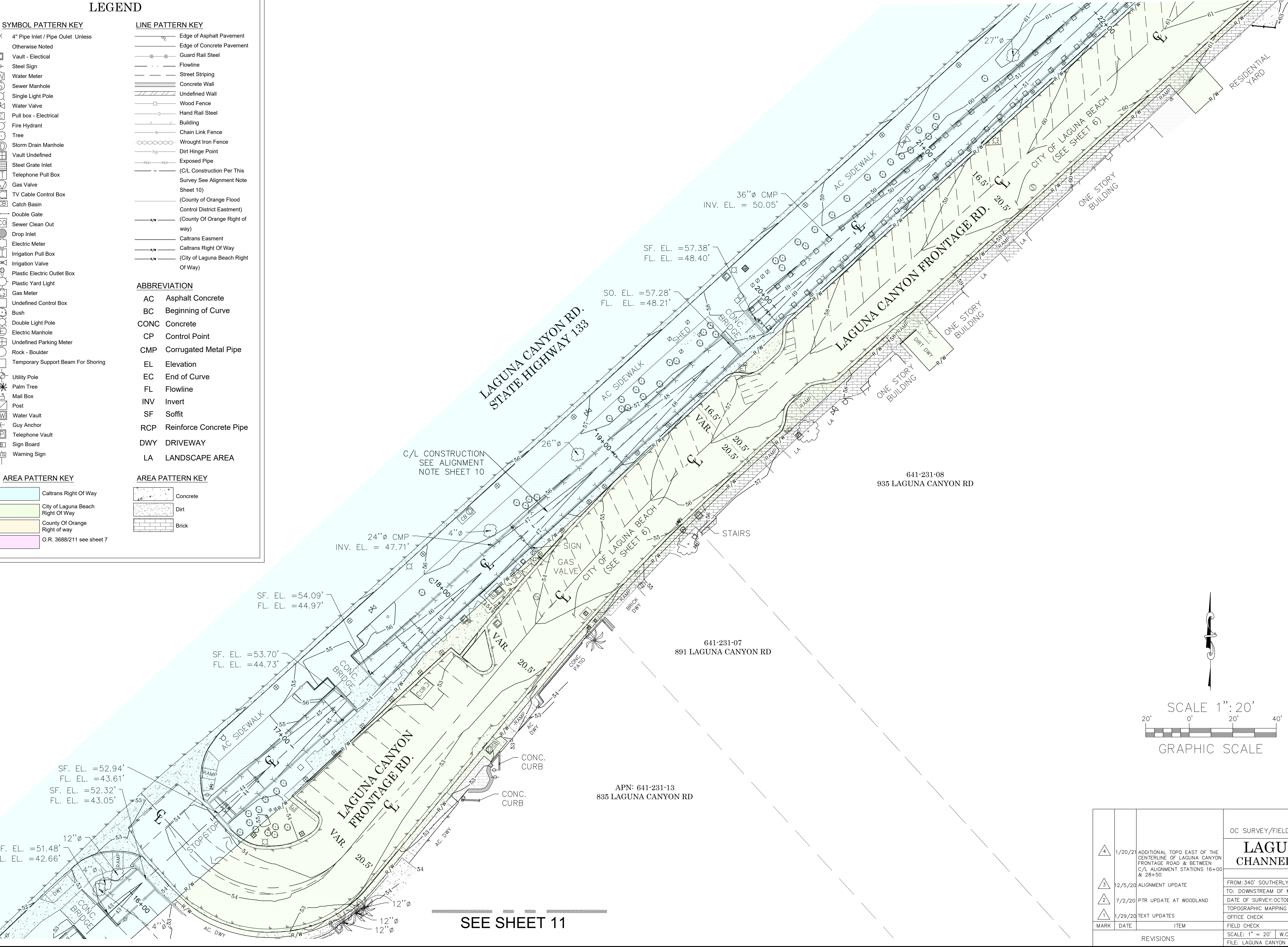
AREA PATTERN KEY

- Caltrans Right Of Way
- City of Laguna Beach Right Of Way
- County Of Orange Right of way
- O.R. 3688/211 see sheet 7

AREA PATTERN KEY

- Concrete
- Dirt
- Brick

SEE SHEET 13



U.S. Survey Foot
OC Public Works
OC Survey/Field Services
Boundary Analysis & Mapping

SEE SHEET 11

		COUNTY OF ORANGE OC PUBLIC WORKS OC SURVEY/FIELD SERVICES/BOUNDARY ANALYSIS & MAPPING	
		LAGUNA CHANNEL (I02) CHANNEL MAINTENANCE PROJECT	
		TOPOGRAPHIC MAP	
		FROM: 340' SOUTHERLY OF LAGUNA CANYON FRONTAGE ROAD TO: DOWNSTREAM OF MILIGAN DR.	
		DATE OF SURVEY: OCTOBER, 2019	BY: T. LOFGREEN & PARTY
		TOPOGRAPHIC MAPPING	BY: H. AFTIM / R. BELTRAN
		OFFICE CHECK	BY: M. KUBISTY, PLS.
		FIELD CHECK	BY: T. LOFGREEN & PARTY
		SCALE: 1" = 20'	W.O. #EF21286
		FILE NO. 1819PW-OP0010	
		FILE: LAGUNA_CANYON_CHANNEL_SEGMENT_1_TOPO_2019.DWG	
REVISIONS	DATE	ITEM	
1/20/21		ADDITIONAL TOPO EAST OF THE CENTERLINE OF LAGUNA CANYON FRONTAGE ROAD & BETWEEN C/L ALIGNMENT STATIONS 16+00 & 28+50	
12/5/20		ALIGNMENT UPDATE	
7/2/20		PTR UPDATE AT WOODLAND	
1/29/20		TEXT UPDATES	

SHEET NO.
12
of
14

LEGEND

SYMBOL PATTERN KEY

- 4" Pipe Inlet / Pipe Outlet - Unless Otherwise Noted
- Vault - Electrical
- Steel Sign
- Water Meter
- Sewer Manhole
- Single Light Pole
- Water Valve
- Pull box - Electrical
- Fire Hydrant
- Tree
- Storm Drain Manhole
- Vault Undefined
- Steel Grate Inlet
- Telephone Pull Box
- Gas Valve
- TV Cable Control Box
- Catch Basin
- Double Gate
- Sewer Clean Out
- Drop Inlet
- Electric Meter
- Irrigation Pull Box
- Irrigation Valve
- Plastic Electric Outlet Box
- Plastic Yard Light
- Gas Meter
- Undefined Control Box
- Bush
- Double Light Pole
- Electric Manhole
- Undefined Parking Meter
- Rock - Boulder
- Temporary Support Beam For Shoring
- Utility Pole
- Palm Tree
- Mail Box
- Post
- Water Vault
- Guy Anchor
- Telephone Vault
- Sign Board
- Warning Sign

LINE PATTERN KEY

- Edge of Asphalt Pavement
- Edge of Concrete Pavement
- Guard Rail Steel
- Flowline
- Street Striping
- Concrete Wall
- Undefined Wall
- Wood Fence
- Hand Rail Steel
- Building
- Chain Link Fence
- Wrought Iron Fence
- Dirt Hinge Point
- Exposed Pipe
- (C/L Construction Per This Survey See Alignment Note Sheet 10)
- (County of Orange Flood Control District Eastment)
- (County Of Orange Right of way)
- Caltrans Easment
- Caltrans Right Of Way
- (City of Laguna Beach Right Of Way)

ABBREVIATION

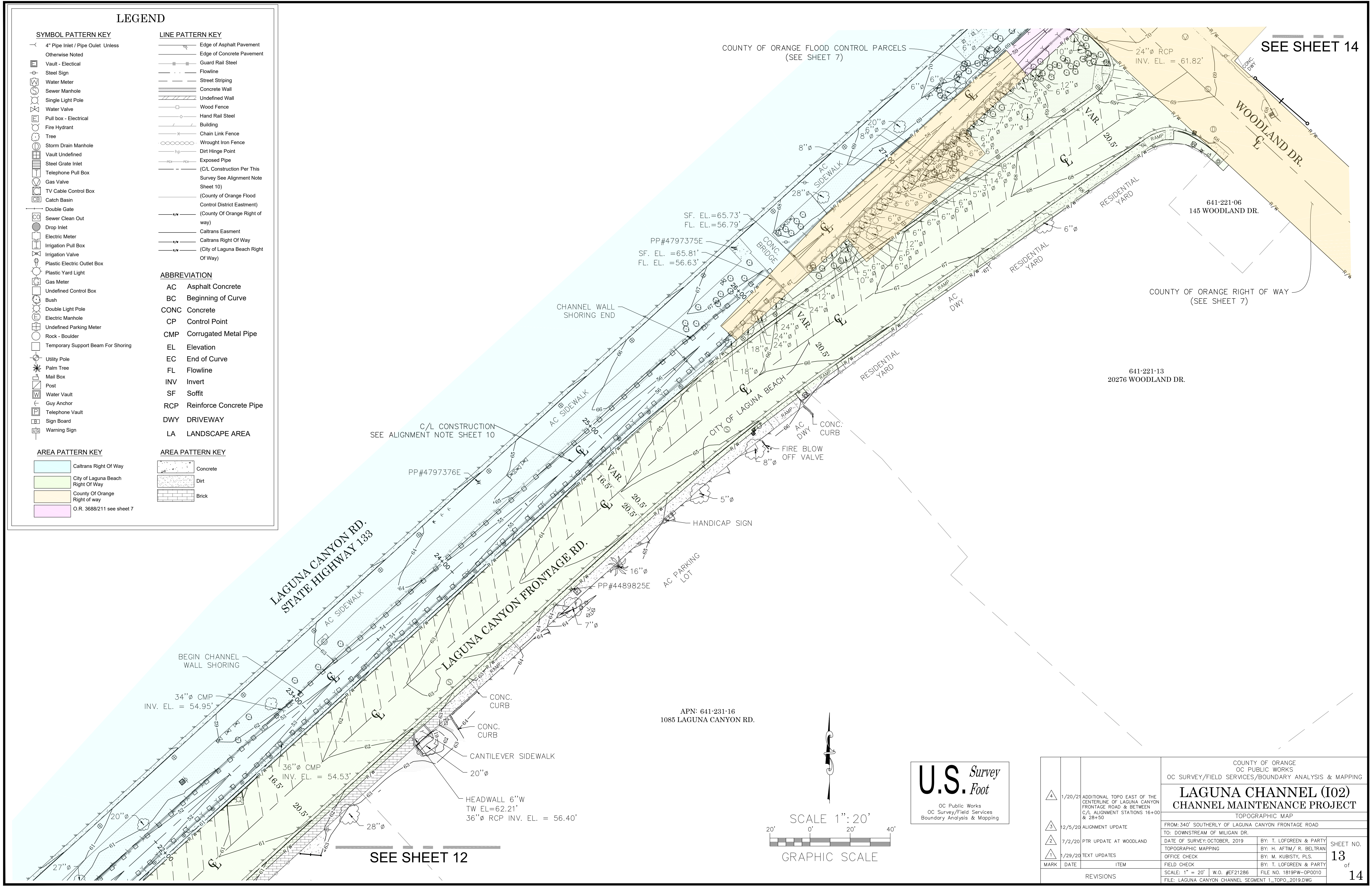
- AC Asphalt Concrete
- BC Beginning of Curve
- CONC Concrete
- CP Control Point
- CMP Corrugated Metal Pipe
- EL Elevation
- EC End of Curve
- FL Flowline
- INV Invert
- SF Soffit
- RCP Reinforce Concrete Pipe
- DWY DRIVEWAY
- LA LANDSCAPE AREA

AREA PATTERN KEY

- Caltrans Right Of Way
- City of Laguna Beach Right Of Way
- County Of Orange Right of way
- O.R. 3688/211 see sheet 7

AREA PATTERN KEY

- Concrete
- Dirt
- Brick



SEE SHEET 14

SEE SHEET 12

U.S. Survey
OC Public Works
OC Survey/Field Services
Boundary Analysis & Mapping

SCALE 1" = 20'
GRAPHIC SCALE

		COUNTY OF ORANGE OC PUBLIC WORKS OC SURVEY/FIELD SERVICES/BOUNDARY ANALYSIS & MAPPING	
		LAGUNA CHANNEL (I02) CHANNEL MAINTENANCE PROJECT	
		TOPOGRAPHIC MAP	
		FROM: 340' SOUTHERLY OF LAGUNA CANYON FRONTAGE ROAD TO: DOWNSTREAM OF MILIGAN DR.	
		DATE OF SURVEY: OCTOBER, 2019	BY: T. LOFGREEN & PARTY
		TOPOGRAPHIC MAPPING	BY: H. AFTIM / R. BELTRAN
		OFFICE CHECK	BY: M. KUBISTY, PLS.
		FIELD CHECK	BY: T. LOFGREEN & PARTY
		SCALE: 1" = 20' W.O. #F21286	FILE NO. 1819PW-OP0010
		FILE: LAGUNA CANYON CHANNEL SEGMENT 1_TOPO_2019.DWG	
MARK	DATE	ITEM	
1/20/21		ADDITIONAL TOPO EAST OF THE CENTERLINE OF LAGUNA CANYON FRONTAGE ROAD & BETWEEN C/L ALIGNMENT STATIONS 16+00 & 28+50	
12/5/20		ALIGNMENT UPDATE	
7/2/20		PTR UPDATE AT WOODLAND	
1/29/20		TEXT UPDATES	
REVISIONS			

LEGEND

SYMBOL PATTERN KEY

- 4" Pipe Inlet / Pipe Outlet Unless Otherwise Noted
- Vault - Electrical
- Steel Sign
- Water Meter
- Sewer Manhole
- Single Light Pole
- Water Valve
- Pull box - Electrical
- Fire Hydrant
- Tree
- Storm Drain Manhole
- Vault Undefined
- Steel Grate Inlet
- Telephone Pull Box
- Gas Valve
- TV Cable Control Box
- Catch Basin
- Double Gate
- Sewer Clean Out
- Drop Inlet
- Electric Meter
- Irrigation Pull Box
- Irrigation Valve
- Plastic Electric Outlet Box
- Plastic Yard Light
- Gas Meter
- Undefined Control Box
- Bush
- Double Light Pole
- Electric Manhole
- Undefined Parking Meter
- Rock - Boulder
- Temporary Support Beam For Shoring
- Utility Pole
- Palm Tree
- Mail Box
- Post
- Water Vault
- Guy Anchor
- Telephone Vault
- Sign Board
- Warning Sign

LINE PATTERN KEY

- Edge of Asphalt Pavement
- Edge of Concrete Pavement
- Guard Rail Steel
- Flowline
- Street Striping
- Concrete Wall
- Undefined Wall
- Wood Fence
- Hand Rail Steel
- Building
- Chain Link Fence
- Wrought Iron Fence
- Dirt Hinge Point
- Exposed Pipe
- (C/L Construction Per This Survey See Alignment Note Sheet 10)
- (County of Orange Flood Control District Eastment)
- (County Of Orange Right of way)
- Caltrans Easment
- Caltrans Right Of Way
- (City of Laguna Beach Right Of Way)

ABBREVIATION

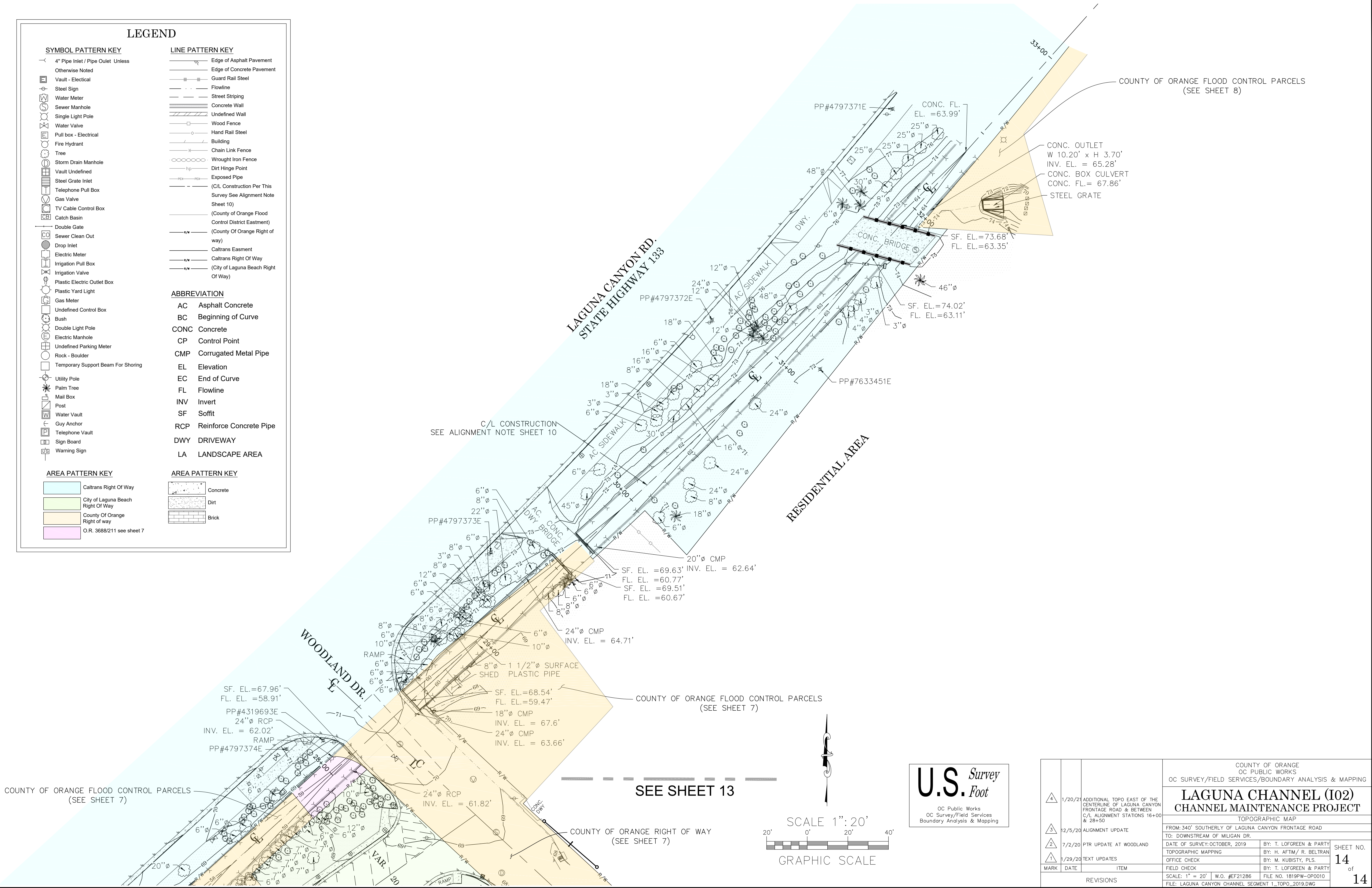
- AC Asphalt Concrete
- BC Beginning of Curve
- CONC Concrete
- CP Control Point
- CMP Corrugated Metal Pipe
- EL Elevation
- EC End of Curve
- FL Flowline
- INV Invert
- SF Soffit
- RCP Reinforce Concrete Pipe
- DWY DRIVEWAY
- LA LANDSCAPE AREA

AREA PATTERN KEY

- Caltrans Right Of Way
- City of Laguna Beach Right Of Way
- County Of Orange Right of way
- O.R. 3688/211 see sheet 7

AREA PATTERN KEY

- Concrete
- Dirt
- Brick



U.S. Survey
OC Public Works
OC Survey/Field Services
Boundary Analysis & Mapping

		COUNTY OF ORANGE OC PUBLIC WORKS OC SURVEY/FIELD SERVICES/BOUNDARY ANALYSIS & MAPPING	
		LAGUNA CHANNEL (I02) CHANNEL MAINTENANCE PROJECT	
		TOPOGRAPHIC MAP	
		FROM: 340' SOUTHERLY OF LAGUNA CANYON FRONTAGE ROAD TO: DOWNSTREAM OF MILIGAN DR.	
		DATE OF SURVEY: OCTOBER, 2019	BY: T. LOFGREEN & PARTY
		TOPOGRAPHIC MAPPING	BY: H. AFTIM / R. BELTRAN
		OFFICE CHECK	BY: M. KUBISTY, PLS.
		FIELD CHECK	BY: T. LOFGREEN & PARTY
		SCALE: 1" = 20' W.O. #F21286	FILE NO. 1819PW-OP0010
		FILE: LAGUNA CANYON CHANNEL SEGMENT 1_TOPO_2019.DWG	
MARK	DATE	ITEM	
Δ	1/20/21	ADDITIONAL TOPO EAST OF THE CENTERLINE OF LAGUNA CANYON FRONTAGE ROAD & BETWEEN C/L ALIGNMENT STATIONS 16+00 & 28+50	
Δ	12/5/20	ALIGNMENT UPDATE	
Δ	7/2/20	PTR UPDATE AT WOODLAND	
Δ	1/29/20	TEXT UPDATES	
REVISIONS			