

CP #703
SET 1 1/4" LEAD TACK & STEEL TAG
FLUSH IN CONC. CURB
STAMPED "ORANGE COUNTY SURVEYOR" CP
N: 2146711.20'
E: 6095044.74'

LAGUNA CANYON RD

SHT. 11

SHT. 12

SHT. 13

SHT. 14

LAGUNA CANYON CHANNEL (002)

N47°52'20"E 2,525.93'

CP #43
SET 1 1/4" LEAD TACK & STEEL TAG
FLUSH IN CONC. CURB
STAMPED "ORANGE COUNTY SURVEYOR" CP
N: 2148405.56'
E: 6096918.10'

IDENTICAL

FOUND CGPS "SBCC"
N: 2147750.81'
E: 6131652.60'
THIS IS A CONTINUOUS GPS
STATION (CGPS) AND IS PART OF
THE CALIFORNIA SPATIAL
REFERENCE NETWORK (CSRN),
FROM WHICH DATA CAN BE
DOWNLOADED HERE:
[HTTP://SOPACCSRC.UCSD.EDU/](http://SOPACCSRC.UCSD.EDU/).

N07°50'54"E 44,547.78'
BASIS OF BEARING

THE BASIS OF BEIRINGS FOR THIS SURVEY IS BASED ON THE CALIFORNIA COORDINATE SYSTEM (CCS83), ZONE VI, NAD 83, OCS (2007.00) EPOCH ADJUSTMENT, AS DETERMINED LOCALLY BY A LINE BETWEEN CONTINUOUS GLOBAL POSITIONING STATIONS CGPS (SBCC) AND (WHYT) BEING NORTH 07°50'54" EAST AS DERIVED FROM THE COORDINATES PUBLISHED BY THE CALIFORNIA SPATIAL REFERENCE CENTER (CSRC) ALONG WITH DATA SHEETS ON FILE IN THE OFFICE OF THE ORANGE COUNTY SURVEYOR.

COORDINATES SHOWN ARE BASED ON THE CALIFORNIA COORDINATE SYSTEM (CCS83), ZONE VI, NAD 83, OCS 2007.0 EPOCH ADJUSTMENT.

ALL DISTANCES SHOWN ARE GRID, UNLESS OTHERWISE NOTED. TO OBTAIN
GROUND DISTANCES MULTIPLY GRID BY 1.00003624.
ALL DISTANCES ARE BASED ON THE U.S. SURVEY FOOT.

O.C.S. BM. 1E-71-69 EL. = 197.808' YEAR LEVELED: 1988

NAVD 1988 (O.C.S. 1995 ADJUSTMENT)

DESCRIPTION: FOUND 3 3/4" OCS ALUMINUM BENCHMARK DISK STAMPED
"3K-34-70", SET IN THE WESTERLY CORNER OF A 4 FT. BY 9 FT. CONCRETE
CATCH BASIN. MONUMENT IS LOCATED ALONG THE SOUTHERLY SIDE OF LAGUNA
CANYON ROAD (RTE 133) 0.4 MILES NORTHEASTERLY ALONG(RTE 133) FROM
THE CENTERLINE OF PACIFIC COAST HIGHWAY, 39.5 FT. SOUTHWESTERLY OF THE
CENTERLINE OF LAGUNA CANYON ROAD AND DIRECTLY ACROSS LAGUNA
CANYON ROAD FROM A SIGN READING "HOME OF THE FESTIVAL OF ARTS
LAGUNA BEACH" MONUMENT IS SET LEVEL WITH THE SIDEWALK.

THE SURVEY INFORMATION SHOWN HEREON IS TO BE USED FOR TOPOGRAPHIC
RELATIONSHIPS ONLY AND IS NOT INTENDED FOR LAND ACQUISITION OR
BOUNDARY PURPOSES.
PARCELS SHOWN WITHOUT BEARING AND DISTANCES ARE FOR GRAPHICAL
PURPOSES.

SHEET	NO.	DESCRIPTION
SHEET	1	TITLE SHEET
SHEETS	2-9	BOUNDARY/RIGHT OF WAY
SHEETS	10	ALIGNMENT SHEET
SHEETS	11-14	TOPOGRAPHIC MAP

THE C/L CONSTRUCTION ALIGNMENT SHOWN HEREON WAS ESTABLISHED BY HOLDING A POINT PERPENDICULAR TO & 70' S'ELY OF STATION 45+03.58 HWY 133 WHICH WHICH IS EQUAL TO 27+84.31 C/L O.C.F.C.D CHANNEL PER (R49). STATIONING INCREASES N'LY & DECREASES S'WLY FROM SAID POINT & PARALLELS SAID C/L OF HWY.

THE PURPOSE OF THE SURVEY IS TO PROVIDE A TOPOGRAPHIC MAP AND RIGHT OF WAY ESTABLISHMENT FOR THIS PORTION OF THE LAGUNA CHANNEL (102).

THIS MAP CORRECTLY REPRESENTS A SURVEY MADE BY ME
OR UNDER MY DIRECTION IN CONFORMANCE WITH
REQUIREMENTS OF THE PROFESSIONAL LAND SURVEYOR'S
ACT; THIS 27TH DAY OF JUNE, 2022.

MICHAEL KUBISTY, PLS. SENIOR LAND SURVEYOR



THIS MAP HAS BEEN EXAMINED IN ACCORDANCE WITH THE
PROFESSIONAL LAND SURVEYOR'S ACT; THIS 27TH DAY
OF JUNE, 2022.

MICHAEL LAFONTAINE, PLS. SENIOR SURVEYOR



TOPOGRAPHIC MAPPING PROJECT

<div><div>6</div></div>	5/27/22	ADDITIONAL TOPO FRONTIER & GAS UTILITIES	COUNTY OF ORANGE OC PUBLIC WORKS OC SURVEY/FIELD SERVICES/BOUNDARY ANALYSIS & MAPPING	<div>LAGUNA CHANNEL (I02)</div> <div>CHANNEL MAINTENANCE PROJECT</div> <div>TITLE SHEET</div> <div>FROM: 340' SOUTHERLY OF LAGUNA CANYON FRONTAGE ROAD TO: DOWNSTREAM OF MILIGAN DR.</div> <div><div><div>DATE OF SURVEY: OCTOBER, 2019</div><div>TOPOGRAPHIC MAPPING</div><div>OFFICE CHECK</div><div>FIELD CHECK</div></div><div><div>BY: T. LOFGREEN & PARTY</div><div>BY: H. AFTIM / R. BELTRAN</div><div>BY: M. KUBISTY, PLS.</div><div>BY: T. LOFGREEN & PARTY</div></div></div> <div>SHEET NO. 1 of 14</div>
	<div><div>5</div></div>	8/9/21		
<div><div>4</div></div>	1/20/21	ADDITIONAL TOPO EAST OF THE CENTERLINE OF LAGUNA CANYON FRONTAGE ROAD & BETWEEN C/L ALIGNMENT STATIONS 16+00 & 28+50		
<div><div>3</div></div>	12/5/20	ALIGNMENT UPDATE		
<div><div>2</div></div>	7/2/20	PTR UPDATE AT WOODLAND		
<div><div>1</div></div>	1/29/20	TEXT UPDATES		
MARK	DATE	ITEM	SCALE: N.T.S. W.O. #EF21286 FILE NO. 1819PW-0P0010 FILE: LAGUNA CANYON CHANNEL SEGMENT 1 TOPO, 2019-DWG	
REVISIONS				

MONUMENT NOTES

4039

FOUND PUNCHED SPIKE & WASHER STAMPED " " TRANS," PER R3, DOWN 0.2' IN A.C. ACCEPTED AS CENTERLINE INTERSECTION OF BROADWAY & TRAVERSE LINE SHOWN ON R2.

419

FOUND PUNCHED SPIKE & WASHER PER R2 DOWN 0.2' IN A.C. ILLEGIBLE, ACCEPTED AS CENTERLINE INTERSECTION OF BEACH STREET & OCEAN AVE.

425

FOUND 3/4 " I.P. PER R1, HOLLOW, FLUSH IN DIRT LEANING N'WLY. N59°15'00"W 0.09' NOT ACCEPTED AS POINT ON N'WLY RIGHT OF WAY OCEAN AVE.

426

FOUND 3/4 " I.P. PER R1, HOLLOW, FLUSH IN DIRT LEANING N'WLY. N59°15'00"W 0.18' NOT ACCEPTED AS POINT ON N'WLY RIGHT OF WAY OCEAN AVE.

427

FOUND 1" I.P. WITH TAG STAMPED "RE 2708" PER R1 ACCEPTED AS POINT ON N'WLY RIGHT OF WAY OCEAN AVE.

428

FOUND LEAD & 3/4" BRASS TAG STAMPED "RCE 28328" PER R1, FLUSH IN CONCRETE, ACCEPTED AS 1.00' OFFSET TO THE N'WLY RIGHT OF WAY OF OCEAN AVE.

431

FOUND LEAD & 3/4" BRASS TAG PER R1, FLUSH IN CONCRETE, STAMPED " RCE 28328" ACCEPTED AS 1.00' OFFSET TO THE N'WLY RIGHT OF WAY OF OCEAN AVE.

432

FOUND LEAD & 1 1/4" BRASS TAG STAMPED "BC RW 4--92, PER R1, FLUSH IN CONCRETE, ACCEPTED AS B.C. IN S'WLY RIGHT OF WAY FOREST AVE.

434

FOUND MAG. NAIL & WASHER STAMPED "ORANGE COUNTY SURVEYOR" PER R2 FLUSH IN A.C., N25°35'05"E 1.65' FROM CENTERLINE INTERSECTION OCEAN AVE. & FOREST AVE.

444

FOUND LEAD & 3/4" BRASS TAG STAMPED "LS 3064" PER R7, FLUSH IN CONCRETE N62°18'25"W 0.48' NOT ACCEPTED AS CORNER "L" OF PARCEL 4 OF R7.

445

FOUND 1" BRASS TAG STAMPED "LS 1444" PER R7, FLUSH IN CONCRETE, ACCEPTED AS CORNER "H" OF PARCEL 4 OF R7.

446

FOUND 1 1/2" I.P. HOLLOW PER R7, FLUSH IN DIRT, ACCEPTED AS W'LY CORNER OF PARCEL 4 OF R7.

448

FOUND 1" I.P., WITH TAG STAMPED " LS 4139", PER R7, FLUSH IN DIRT, ACCEPTED AS THE NW CORNER OF PARCEL 4 OF R7.

449

FOUND LEAD AND TACK PER R14 FLUSH IN CONCRETE ACCEPTED AS THE B.C. OF THE SOUTHWESTERLY RIGHT OF WAY OF LAGUNA CANYON FRONTAGE ROAD.

452

FOUND 2" I.P. WITH NAIL PER R9, FLUSH IN DIRT, ACCEPTED AS E.C. OF THE 1968 CENTERLINE ALIGNMENT OF LAGUNA CANYON ROAD.

541

FOUND SPIKE & WASHER STAMPED O.C.S., PER R2, DOWN 0.2' IN A.C., ACCEPTED AS CENTERLINE INTERSECTION OF FOREST AVE., & THE N'ELY PROLONGATION OF THE CENTERLINE OF THE S'WLY PORTION OF THE LAGUNA CANYON CHANNEL (I02).

551

FOUND ROUND HEAD SPIKE & WASHER, ILLEGIBLE, NO REFERENCE, FLUSH IN A.C N08°27'49"E 0.46' FROM CENTERLINE P.I OF FOREST AVE.

560

FOUND GEAR SPIKE & WASHER STAMPED "KDM MERIDIAN, PLS 7564" PER R6, ACCEPTED AS THE CENTERLINE INTERSECTION OF FOREST AVE & LOMA PLACE.

563

FOUND GEAR SPIKE & WASHER STAMPED "PLS 7564" PER R6 & R1, ACCEPTED AS CENTERLINE P.I. OF FOREST AVE.

622

FOUND LEAD & 1 1/4" BRASS TAG PER R2, ILLEGIBLE, FLUSH IN TOP OF CURB, ACCEPTED AS CENTERLINE PROD. OF BROADWAY.

752

FOUND SPIKE & WASHER STAMPED O.C.S., PER R2, DOWN 0.2' IN A.C.,ACCEPTED AS THE INTERSECTION OF FOREST AVE., & THE N'ELY PROLONGATION OF THE S'ELY LINE OF LOTS 8 & 9, BLK-4 OF M.M 4/58-59, & THE S'ELY LINE OF BLK-E OF TRACT 208, MM 22-18, & ALSO BOUNDARY LINE PER BOOK 95-338 OF DEEDS, AS SHOWN BY R2.

548

FOUND 1" I.P. WITH TAG ILLEGIBLE UNDER BRICK SIDEWALK ACCEPTED AS THE E.C. IN THE WESTERLY R/W OF FOREST AVENUE.

4496

FOUND MAG NAIL AND WASHER STAMPED "LS 5411" PER R39, FLUSH IN AC, SOUTHEASTERLY S62°43'07"E 0.27' NOT ACCEPTED AS THE BC OF LAGUNA CANYON FRONTAGE ROAD.

4497

FOUND LEAD AND TACK NO REFERENCE, FLUSH IN CONC. SIDEWALK, SOUTHEASTERLY S62°24'20"E 0.27' NOT ACCEPTED AS THE NORTHWESTERLY BC OF PARCEL 1 .

4463

FOUND CHISELED "+" IN TOP OF CURB PER R14, SOUTHEASTERLY S42°26'42"E 0.25' NOT ACCEPTED AS REFERENCE TO NORTHWESTERLY BC OF PARCEL 1.

4250

FOUND SPIKE AND 1 3/4" WASHER STAMPED "LS 3064" PER R25, DN 0.20' IN AC, SOUTHEASTERLY S61°11'52"E 0.19' NOT ACCEPTED AS THE EC OF LAGUNA CANYON FRONTAGE ROAD.

4504

FOUND 1" I.P. WITH TAG STAMPED "LS 3064" PER R25, DN 0.35' IN DIRT, SOUTHEASTERLY S46°31'36"E 0.11' NOT ACCEPTED AS THE BC OF PARCEL 2 .

4505

FOUND 1" I.P. WITH TAG STAMPED "LS 3064" PER R25, DN 0.35' IN DIRT, HELD FOR DISTANCE TO THE EC OF PARCEL 2 FROM ACCEPTED MONUMENT 4506 .

4506

FOUND 1" I.P. WITH TAG STAMPED "LS 3064" PER R25, DN 0.35' IN DIRT, ACCEPTED AS THE PI OF PARCEL 2 .

4511

FOUND 2" I.P. WITH TAG STAMPED "LS 3064" PER R19, DN 0.20' IN DIRT, ACCEPTED AS 5.00' OFFSET ALONG THE SOUTHEASTERLY LINE OF LOT 105.

4532

FOUND SPIKE AND WASHER STAMPED "LS 5411" PER R40, FLUSH IN AC, S39°49'57"W 0.08' HELD AS POINT ON CENTERLINE OF WOODLAND DRIVE.

4412

FOUND MAG NAIL AND 1 3/8" WASHER STAMPED "LS 5411" PER R40, FLUSH IN AC, S62°06'57"W 0.05' HELD FOR FOR DISTANCE ALONG CENTERLINE OF WOODLAND DRIVE.

2014

FOUND SPIKE AND WASHER STAMPED "LS 5411" PER R40, FLUSH IN AC, ACCEPTED AS THE EC CENTERLINE OF WOODLAND DRIVE.

4766

FOUND PUNCHED SPIKE AND WASHER PER R25, ILLEGIBLE DN 0.30' IN AC, ACCEPTED AS THE BC CENTERLINE OF WOODLAND DRIVE.

4761

FOUND 2" I.P. PER R30, HOLLOW NO TAG, SOUTHEASTERLY S77°35'33"E 0.05' HELD FOR DISTANCE TO BC ALONG THE SOUTHWESTERLY LINE OF PARCEL B.

4100

FOUND SPIKE AND 1 1/4" WASHER STAMPED "CAL TRANS" PER R19, DN 0.25' IN AC ACCEPTED AS THE P.I. OF CENTERLINE WOODLAND DRIVE AND THE TANGENT LINE OF LAGUNA CANYON ROAD 1968 ALIGNMENT.

4464

FOUND 2" I.P. WITH TAG STAMPED "LS 3064",NO REFERENCE DN 0.80' IN DIRT, S86°30'14"E 0.09' NOT ACCEPTED AS THE BC OF THE 1968 CL OF LAGUNA CANYON ROAD.

4406

FOUND 3 1/2" ALUMINIUM DISK STAMPED "LC4" PER R9, FLUSH IN DIRT, ACCEPTED AS THE NORTHEASTERLY TERMINUS OF THE 4.77' OFFSET LINE PER R9.

4519

FOUND 1 1/2" I.P. NO REFERENCE, ILLEGIBLE PLASTIC PLUG FLUSH IN DIRT, N71°34'55"E 0.07' NOT ACCEPTED AS THE NORTHWEST CORNER OF LOT 95 .

4516

FOUND 1" I.P. WITH TAG STAMPED "LS 4139" PER R41, FLUSH IN FLAGSTONE, ACCEPTED AS THE SOUTHEAST CORNER OF LOT 95 .

4518

FOUND 1" I.P. WITH TAG STAMPED "LS 4139" PER R41, FLUSH IN DIRT, ACCEPTED AS THE NORTHEAST CORNER OF LOT 83.

4514

FOUND 1 1/2" I.P WITH TAG STAMPED "LS 4139" PER R41, FLUSH IN DIRT, ACCEPTED AS THE SOUTHEAST CORNER OF LOT 83.

4781

FOUND 1" IP WITH TAG STAMPED "LS 3064" PER 41, DN 0.50' IN DIRT, NORTHEASTERLY N42°46'45"E 0.07' HELD AS POINT ON NORTHWESTERLY LINE OF LOT 76.

4468

FOUND 1" I.P. WITH TAG STAMPED "LS 4384" PER R32, DN 0.65' IN DIRT, SOUTHEASTERLY S86°27'15E 0.08' NOT ACCEPTED AS THE INTERSECTION OF 1968 CL LAGUNA CANYON ROAD HELD FOR CL MILLIGAN DRIVE.

4467

FOUND CONC. NAIL AND TAG STAMPED "LS 4384" , FLUSH IN AC, ACCEPTED AS POINT ON CL MILLIGAN DRIVE.

4466

FOUND GEAR SPIKE & WASHER STAMPED "LS 4384" PER R32, FLUSH IN AC, ACCEPTED AS POINT ON CL MILLIGAN DRIVE PER R32.

4471

FOUND 1" I.P. WITH TAG STAMPED "LS 4384" PER R32, DN 1.30' IN DIRT, ACCEPTED AS THE SOUTHWEST CORNER OF PARCEL 2.

4472

FOUND 1" I.P. PER R32, HOLLOW, DN 0.65' IN DIRT, ACCEPTED AS THE WESTERLY CORNER OF PARCEL 2.

4473

FOUND 1" I.P. PER R32, HOLLOW DN 0.65' IN DIRT, ACCEPTED AS THE WESTERLY CORNER OF PARCEL 2.

4755

FOUND 1" I.P. WITH TAG STAMPED "LS 4384" PER R32, FLUSH IN AC, ACCEPTED AS THE SOUTHWEST CORNER OF LOT A.

4213

FOUND 1" I.P. WITH TAG STAMPED "LS 4384" PER R32, FLUSH IN AC, ACCEPTED AS THE SOUTHERLY CORNER OF LOT A.

4218

FOUND 1" I.P. WITH TAG STAMPED "LS 4384" PER R32, FLUSH IN AC, ACCEPTED AS THE SOUTHERLY ANGLE POINT OF LOT A.

4762

FOUND 1" I.P. WITH TAG STAMPED "LS 4384" PER R32, FLUSH IN AC, ACCEPTED AS THE SOUTHEAST CORNER OF LOT A.

4760

FOUND 1" I.P. WITH PLASTIC PLUG STAMPED "LS 4384" PER R32 ,FLUSH IN AC, ACCEPTED AS THE EASTERLY CORNER OF LOT A.

4759

FOUND 1" I.P. WITH TAG STAMPED "LS 4384" PER R32, FLUSH IN AC, ACCEPTED AS THE EASTERLY ANGLE POINT OF LOT A.

4758

FOUND 1" I.P. PER R32, HOLLOW FLUSH IN AC, ACCEPTED AS THE EASTERLY ANGLE POINT OF LOT A.

4757

FOUND 1" I.P. WITH TAG STAMPED "LS 4384" PER R32, FLUSH IN AC, ACCEPTED AS THE EASTERLY ANGLE POINT OF LOT A.

4756

FOUND 1" I.P. WITH TAG STAMPED "LS 4384" PER R32 ,FLUSH IN AC, ACCEPTED AS THE NORTHEAST CORNER OF LOT A.

4474

FOUND 1" I.P. WITH TAG STAMPED "LS 4384" PER R32 ,FLUSH IN AC, ACCEPTED AS THE NORTHWEST CORNER OF LOT A.

4475

FOUND 1" I.P. WITH TAG STAMPED "LS 3064" PER R32 ,FLUSH IN DIRT, ACCEPTED AS THE NORTHEAST CORNER OF PARCEL 1.

4414

FOUND A BROKEN GEAR SPIKE NO REFERENCE DN 0.25' IN AC, ACCEPTED AS THE CENTERLINE PI OF CANYON ACRES DRIVE.

4753

FOUND A BROKEN SPIKE SHAFT NO REFERENCE, DN 0.25' IN AC, NORTHEASTERLY N37°21'25E 0.07' FROM INTERSECTION HELD AS POINT ON CENTERLINE 1968 LAGUNA CANYON ROAD.

470

FOUND GEAR SPIKE AND WASHER STAMPED "RCE 28328" PER34, FLUSH IN AC, ACCEPTED CENTERLINE PI OF ARROYO DRIVE.

4401

FOUND SPIKE WITH PUNCH & 1 1/4" WASHER STAMPED "CAL TRANS" PER R37, DN 0.20' IN AC, ACCEPTED AS E.C. CENTERLINE 1968 LAGUNA CANYON ROAD.

4488

FOUND 1" I.P. NO REFERENCE, NO TAG DN 2.5' IN DT, ACCEPTED AS NORTHWEST CORNER OF PARCEL 1 .

4494

FOUND 1" I.P. PER R37, NO TAG UP 0.70' IN DIRT, ACCEPTED AS THE NORTHEAST CORNER OF PARCEL 1.

NOTE

PARCELS SHOWN WITHOUT BEARING AND DISTANCES ARE FOR GRAPHICAL PURPOSES ONLY.

LEGEND

- FOUND MONUMENT AS NOTED
▲ ESTABLISHED BY TIES SEE ESTABLISHMENT NOTES

LINE TABLE

CL ROADWAY _____

SURVEY GEOMETRY _____

STATE HIGHWAY RIGHT-OF-WAY _____ R/W _____ R/W _____

6	8/27/22	ADDITIONAL TOPO FRONTIER & GAS UTILITIES	COUNTY OF ORANGE OC PUBLIC WORKS
	8/29/21	UPDATED SOFIT FLEETING	OC SURVEY/FIELD SERVICES/BOUNDARY ANALYSIS & MAPPING
5			
4	1/20/21	ADDITIONAL TOPO EAST OF THE CENTERLINE OF LAGUNA CANYON FRONTAGE ROAD & BETWEEN C/L ALIGNMENT STATIONS 16+00 & 26+50	LAGUNA CHANNEL (I02) CHANNEL MAINTENANCE PROJECT
			TOPOGRAPHIC MAP
3	12/5/20	ALIGNMENT UPDATE	FROM: FOREST AVE. TO: CANYON ACRES DRIVE
2	7/2/20	PTR UPDATE AT WOODLAND	DATE OF SURVEY: NOV 2019 TOPOGRAPHIC MAPPING
1	1/29/20	TEXT UPDATES	BY: T. LOFGREEN BY: T. LOFGREEN/ R. BELTRAN
	DATE	ITEM	OFFICE CHECK BY: M. KUBISTY, PLS.
			FIELD CHECK BY: T. LOFGREEN
REVISIONS			SCALE: W.O. #EF21286 FILE NO. FILE: LAGUNA_CHANNEL_BOUNDARY_PHASE_II_2019.DWG
			SHEET NO. 2 of 14

ESTABLISHMENT NOTES:

- ① CENTERLINE OF OCEAN AVE ESTABLISHED BETWEEN MONUMENT NOTE 419 & ESTABLISHMENT NOTE ②
- ② S.F.N., ESTABLISHED THE INTERSECTION OF OCEAN AVENUE & FOREST AVENUE BY THE N'ELY PROLONGATION OF A LINE BETWEEN MONUMENT NOTE 419 & ESTABLISHMENT NOTE 63 & AT RECORD DISTANCE NW'LY PER R1 FROM ACCEPTED MONUMENT 563. FITS RECORD DISTANCE BETWEEN MONUMENT NOTE 419 & ESTABLISHMENT NOTE ② PER R1.
- ③ CENTERLINE OF FOREST AVE ESTABLISHED BETWEEN MONUMENT NOTE 563 & ESTABLISHMENT NOTE ②
- ④ S.F.N. ESTABLISHED BY PROPORTION BETWEEN MONUMENT NOTES 622 & 403
- ⑤ CENTERLINE BROADWAY ESTABLISHED BETWEEN MONUMENT NOTE 622 & MONUMENT NOTE 403
- ⑥ CENTERLINE BROADWAY ESTABLISHED HOLDING RECORD DIMENSIONS FROM TRAVERSE LINE PER R9 BETWEEN MONUMENT NOTE 403 & ESTABLISHMENT NOTE ⑦
- ⑦ SFN. ESTABLISHED HOLDING RECORD ANGLE AND DISTANCE PER R7 N'ELY FROM MONUMENT NOTE 403
- ⑧ CENTERLINE OF FOREST AVE ESTABLISHED BETWEEN ESTABLISHMENT NOTES ⑩ & ⑦
- ⑨ CENTERLINE OF FOREST AVE ESTABLISHED BETWEEN ESTABLISHMENT NOTES ② & ⑩
- ⑩ S.F.N. ESTABLISHED BY INTERSECTION FROM THE N'W'LY PROLONGATION OF A LINE BETWEEN MONUMENT NOTES 563 & ESTABLISHMENT NOTE ② & THE S'ELY PROLONGATION OF A LINE BETWEEN MONUMENT NOTES 752 & 541 FITS RECORD DISTANCE BETWEEN ESTABLISHMENT NOTES ② & ⑩ PER R2.
- ⑪ S'W'LY RIGHT OF WAY OF FOREST AVE ESTABLISHED PER LOT LINE ADJUSTMENT O.R. 199500424662.
- ⑫ CENTERLINE OF FOREST AVE ESTABLISHED BETWEEN ESTABLISHMENT NOTE ② & ⑦
- ⑬ ESTABLISHED HOLDING RECORD DISTANCE PER R5 N'W'LY ALONG THE CENTERLINE OF FOREST AVE BETWEEN ESTABLISHMENT NOTES ⑩ & ⑦
- ⑭ ESTABLISHED S'ELY PROLONGATION OF R5 BETWEEN ESTABLISHMENT NOTES ⑬ & ⑮
- ⑮ ESTABLISHED AS THE P.O.B. FOR R5 BY HOLDING RECORD DISTANCE & ANGLE PER R5 FROM ESTABLISHMENT NOTE ⑬
- ⑯ ESTABLISHED THE INTERSECTION OF THE N'ELY RIGHT OF WAY FOREST AVE & THE CENTERLINE OF THE LAGUNA CANYON CHANNEL (I02) BY HOLDING RECORD DISTANCE PER R8 N'W'LY ALONG THE N'ELY RIGHT OF WAY OF SAID FOREST AVE FROM ESTABLISHMENT NOTE ⑮ POSITION IS ALSO THE P.O.B. FOR SAID R8
- ⑰ ESTABLISHED THE B.C. OF THE CENTERLINE OF THE LAGUNA CANYON CHANNEL (I02) BY RECORD ANGLE & DISTANCE FROM ESTABLISHMENT NOTE ⑯ PER R8.
- ⑱ CENTERLINE OF THE LAGUNA CHANNEL (I02) ESTABLISHED BY HOLDING RECORD DATA BETWEEN ESTABLISHMENT NOTES ⑯ & ⑰ PER R8.
- ⑲ ESTABLISHED BY RECORD ANGLE PER R7 & RECORD DISTANCE PER R17 FROM ESTABLISHMENT NOTE ⑳ .
- ㉑ ESTABLISHED BY RECORD ANGLE & DISTANCE FROM ESTABLISHMENT NOTE ㉑ PER R7.
- ㉒ ESTABLISHED AT RECORD DISTANCE PER R7 N'LY ALONG THE E'LY RIGHT OF WAY OF LAGUNA CANYON ROAD FROM ESTABLISHMENT NOTE ㉒
- ㉓ ESTABLISHED POINT IN E'LY RIGHT OF WAY OF THE LAGUNA CANYON ROAD 1914 ALIGNMENT PERPENDICULAR TO & AT RECORD DISTANCE PER R7 FROM ESTABLISHMENT NOTE ㉓
- ㉔ ESTABLISHED AT RECORD DISTANCE N'ELY ALONG THE CENTERLINE OF LAGUNA CANYON ROAD BETWEEN ESTABLISHMENT NOTES ㉔ & ㉕ PER R7.
- ㉕ S.F.N. ESTABLISHED CENTERLINE B.C. OF LAGUNA CANYON ROAD 1968 ALIGNMENT BY TIES PER R15
- ㉖ ESTABLISHED POINT ON CENTERLINE OF LAGUNA CANYON ROAD 1968 ALIGNMENT BY TIES PER R15
- ㉗ ESTABLISHED POINT ON CENTERLINE OF LAGUNA CANYON ROAD 1968 ALIGNMENT BY TIES PER R15
- ㉘ S.F.N. ESTABLISHED P.I. OF LAGUNA CANYON ROAD 1968 ALIGNMENT BY LEAST SQUARES ADJUSTMENT BETWEEN ESTABLISHMENT NOTES ⑦ & ㉔ DID NOT ACCEPT TIES PER R15.
- ㉙ ESTABLISHED BY RECORD DISTANCE PER R2 N'W'LY FROM ESTABLISHMENT NOTE ⑦
- ㉚ ESTABLISHED P.I. OF THE CENTERLINE OF LAGUNA CANYON ROAD 1914 ALIGNMENT BY HOLDING RECORD OFFSET DIMENSIONS PARALLEL TO & PERPENDICULAR WITH THE 1968 CENTERLINE ALIGNMENT PER R2, R16, & R18.
- ㉛ ESTABLISHED P.I. OF THE CENTERLINE OF LAGUNA CANYON ROAD 1914 ALIGNMENT BY HOLDING RECORD DISTANCE PER R7 & OFFSET DIMENSIONS PARALLEL TO & PERPENDICULAR WITH THE 1968 CENTERLINE ALIGNMENT PER R16 & R18.
- ㉜ CENTERLINE OF LAGUNA CANYON ROAD 1914 ALIGNMENT ESTABLISHED BY HOLDING RECORD OFFSET DIMENSIONS PARALLEL TO & PERPENDICULAR WITH THE 1968 CENTERLINE ALIGNMENT PER R2.
- ㉝ CENTERLINE OF LAGUNA CANYON ROAD 1968 ALIGNMENT ESTABLISHED BETWEEN ESTABLISHMENT NOTES ⑦ ㉗ ㉔ ㉕ ㉖ & MONUMENT NOTE 452
- ㉞ ESTABLISHED POINT IN THE CENTERLINE OF OCEAN AVENUE AT 29.00' FROM ACCEPTED MONUMENT 431 AT A RIGHT ANGLE FROM ACCEPTED MONUMENT 428
- ㉟ ESTABLISHED THE CENTERLINE OF OCEAN AVENUE BETWEEN ACCEPTED MONUMENT 419 & ESTABLISHMENT NOTE 63
- ㊱ ESTABLISHED THE INTERSECTION OF CENTERLINE TANGENTS OF FOREST AVENUE (THIRD STREET) & OCEAN AVENUE PER R5.
- ㊲ ESTABLISHED THE CENTERLINE OF LAGUNA CANYON ROAD 1968 ALIGNMENT BETWEEN ESTABLISHMENT NOTE ㉞ & ESTABLISHMENT NOTE ㉖
- ㊳ ESTABLISHED THE BC CENTERLINE OF LAGUNA CANYON ROAD 1968 ALIGNMENT BY TIES PER R18 & R19.
- ㊴ ESTABLISHED THE CENTERLINE OF LAGUNA CANYON ROAD 1968 ALIGNMENT BETWEEN ESTABLISHMENT NOTE ㉞ & ACCEPTED MONUMENT 452
- ㊵ ESTABLISHED CENTERLINE P.I. OF LAGUNA CANYON ROAD 1968 ALIGNMENT BY THE NORTHEASTERLY PROLONGATION OF THE LINE ESTABLISHED BY NOTE ㉖ & THE SOUTHWESTERLY PROLONGATION THE LINE ESTABLISHED BY ESTABLISHMENT NOTE 63
- ㊶ ESTABLISHED THE P.I. OF THE OFFSET LINE PER R9 BY INTERSECTION OF THE NORTHEASTERLY PROLONGATION OF THE LINE ESTABLISHED BY ESTABLISHMENT NOTE 63 & THE SOUTHWESTERLY PROLONGATION OF A LINE OFFSET HOLDING RECORD DIMENSION PARALLEL WITH THE 1968 CENTERLINE ALIGNMENT PER R9 ESTABLISHED BY NOTE 63
- ㊷ S.F.N. ESTABLISHED THE CENTERLINE INTERSECTION OF WOODLAND DRIVE & LAGUNA CANYON FRONTAGE ROAD BY TIES PER R42.
- ㊸ S.F.N. ESTABLISHED A POINT ON CENTERLINE CANON ACRES DRIVE BY TIES PER R43.
- ㊹ S.F.N. ESTABLISHED THE CENTERLINE INTERSECTION OF CANYON ACRES DRIVE & ARROYO DRIVE BY TIES PER R44.
- ㊺ ESTABLISHED THE CENTERLINE OF WOODLAND DRIVE BY ACCEPTED MONUMENTS 4100 4412 AND 4768
- ㊻ ESTABLISHED THE CENTERLINE OF CANYON ACRES DRIVE BETWEEN ESTABLISHMENT NOTE 43 AND ACCEPTED MONUMENT 4414
- ㊼ ESTABLISHED BY THE P.I. CENTERLINE LAGUNA CANYON ROAD 1914 & 1929 ALIGNMENT BY RECORD DIMENSIONS PER R19.
- ㊽ ESTABLISHED CENTERLINE LAGUNA CANYON ROAD 1914 AND 1929 ALIGNMENT BY LEAST SQUARES ADJUSTMENT BETWEEN ESTABLISHMENT NOTE 60 AND ESTABLISHMENT NOTE 66
- ㊾ ESTABLISHED CENTERLINE LAGUNA CANYON ROAD 1914 AND 1929 ALIGNMENT BY LEAST SQUARES ADJUSTMENT BETWEEN ESTABLISHMENT NOTE 46 AND ACCEPTED MONUMENT 4401
- ㊿ ESTABLISHED CITY OF LAGUNA BEACH RIGHT OF WAY OF LAGUNA CANYON FRONTAGE ROAD HOLDING RECORD DIMENSIONS PER R23 AND PARALLEL TO CENTERLINE LAGUNA CANYON ROAD 1968 ALIGNMENT ESTABLISHED BY NOTE 63 . THIS AREA PENDING RECEIPT OF TITLE REPORT.
- 1 ESTABLISHED CENTERLINE OF LAGUNA CANYON FRONTAGE ROAD PER R21, R14, AND R25 BY RECORD DIMENSIONS AND OFFSET PARALLEL TO SOUTHEASTERLY RIGHT OF WAY LAGUNA CANYON FRONTAGE ROAD ESTABLISHED BY NOTE 43
- 2 CENTERLINE OF MILLIGAN AVENUE ESTABLISHED BETWEEN ACCEPTED MONUMENTS 4468 AND 4468
- 3 ESTABLISHED BC CENTERLINE LAGUNA CANYON ROAD 1968 ALIGNMENT BY ESTABLISHMENT NOTE 48
- 4 ESTABLISHED EC LAGUNA CANYON ROAD (STATE HIGHWAY 133) 1914 & 1929 ALIGNMENT AT RECORD DISTANCE FROM ESTABLISHMENT NOTE 62
- 5 ESTABLISHED BC IN THE CENTERLINE OF LAGUNA CANYON ROAD 1968 ALIGNMENT AT 30.00' FROM ESTABLISHMENT NOTE 63 AT A RIGHT ANGLE FROM ESTABLISHMENT NOTE 62
- 6 ESTABLISHED EC IN THE CENTERLINE OF LAGUNA CANYON ROAD 1968 ALIGNMENT AT 30.00' FROM ESTABLISHMENT NOTE 62 AT A RIGHT ANGLE FROM ESTABLISHMENT NOTE 63
- 7 ESTABLISHED THE CENTERLINE OF LAGUNA CANYON ROAD 1968 ALIGNMENT BETWEEN ESTABLISHMENT NOTES 64 & 65
- 8 ESTABLISHED THE CENTERLINE CURVE CONCAVE TO THE NORTHWEST BETWEEN ESTABLISHMENT NOTES 68 & 63 TANGENT TO CENTERLINES ESTABLISHED BY ESTABLISHMENT NOTES 68 AND 66
- 9 ESTABLISHED THE NORTH LINE OF LOT 1 SEC 24, T7S, R9W, S.B.B.M. PER R37 BETWEEN ACCEPTED MONUMENTS 4488 AND 4434

- 69 ESTABLISHED NORTHEASTERLY LINE OF LOT 99 PARALLEL WITH, PERPENDICULAR TO AND 15' PER R30 FROM ESTABLISHMENT NOTE 44
- 70 ESTABLISHED SOUTHEASTERLY RIGHT OF WAY OF 1914 & 1929 LAGUNA CANYON ROAD PARALLEL WITH, PERPENDICULAR TO AND 25' PER R28 FROM ESTABLISHMENT NOTE 47
- 71 ESTABLISHED HOLDING RECORD CURVE DATA PER R50 S'ELY FROM ESTABLISHMENT NOTE 62
- 72 ESTABLISHED THE POINT OF COMMENCEMENT FOR R50 BY HOLDING RECORD COURSES, PER BOOK 450 PAGE 1 O.R., N'W'LY ALONG LINE ESTABLISHMENT 69 FROM ESTABLISHMENT NOTE 66
- 73 ESTABLISHED HOLDING RECORD CURVE DATA PER R30 SOUTHEASTERLY FROM ESTABLISHMENT NOTE 62
- 74 ESTABLISHED THE MOST WESTERLY CORNER OF R30 HOLDING RECORD DISTANCE, PER R30 FROM ESTABLISHMENT NOTE 62 PARALLEL WITH, PERPENDICULAR TO AND 25' FROM ESTABLISHMENT NOTE 47
- 75 ESTABLISHED THE MOST SOUTHERLY CORNER OF LOT 104 OF R30 HOLDING RECORD ANGLE AND DISTANCE PER R30 AT ESTABLISHMENT NOTE 64 FROM ESTABLISHMENT NOTE 62
- 76 ESTABLISHED THE MOST EASTERLY CORNER OF LOT 99, OF R30 HOLDING RECORD DISTANCE PER R30 FROM ESTABLISHMENT NOTE 64 PARALLEL WITH, AND PERPENDICULAR 15' FROM ESTABLISHMENT NOTE 44
- 77 ESTABLISHED THE SOUTHEASTERLY LINES OF LOTS 104, 103, 102, 101, 100, AND 99 OF R30 HOLDING RECORD ANGLES AND DISTANCES PER R30 BETWEEN ESTABLISHMENT NOTES 65 AND 66
- 78 ESTABLISHED THE WESTERLY CORNER OF R49 HOLDING RECORD DISTANCE PER R49 FROM SOUTHEASTERLY FROM ESTABLISHMENT NOTE 64 BETWEEN ESTABLISHMENT NOTES 64 AND 63
- 79 ESTABLISHED A LINE PARALLEL WITH AND 80.00' SOUTHEASTERLY OF LAGUNA CANYON CHANNEL PER R49 FROM ESTABLISHMENT NOTE 68
- 80 ESTABLISHED THE WESTERLY CORNER OF R46 HOLDING RECORD DISTANCE PER R46 FROM ESTABLISHMENT NOTE 64 BETWEEN ESTABLISHMENT NOTES 64 AND 65
- 81 ESTABLISHED THE NORTHERLY CORNER OF R46 HOLDING RECORD ANGLE AND DISTANCE PER R46 AT ESTABLISHMENT NOTE 70 FROM ESTABLISHMENT NOTE 65
- 82 ESTABLISHED THE NORTHERLY CORNER OF R47 HOLDING RECORD ANGLE AND DISTANCE PER R47 AT ESTABLISHMENT NOTE 71 FROM ESTABLISHMENT NOTE 70
- 83 ESTABLISHED THE NORTHERLY CORNER OF R48 HOLDING RECORD ANGLE AND DISTANCE PER R48 AT ESTABLISHMENT NOTE 72 FROM ESTABLISHMENT NOTE 71
- 84 ESTABLISHED THE BC ON THE 1914 CL OF LAGUNA CANYON RD. FROM ESTABLISHMENT NOTE 43 BETWEEN ESTABLISHMENT NOTE 46 AND ACCEPTED MONUMENT 4401
- 85 ESTABLISHED A POINT ON 1929 CL OF LAGUNA CANYON RD. FROM ESTABLISHMENT NOTE 43 RECORD DISTANCE PER R19 FROM ESTABLISHMENT NOTE 74
- 86 ESTABLISHED THE NORTHWESTERLY CORNER OF PARCEL 104 RADIAL 28.12' PER R19 FROM ESTABLISHMENT NOTE 75
- 87 ESTABLISHED THE BC OF A NON-TANGENT CURVE CONCAVE TO THE NORTHEAST ON THE PROLONGATION OF LINE ESTABLISHMENT NOTE 60 RECORD DISTANCE PER R19 FROM ESTABLISHMENT NOTE 76
- 88 ESTABLISHED THE EC OF A NON-TANGENT CURVE CONCAVE TO THE NORTHEAST BY RECORD CURVE DATA PER R19 FROM ESTABLISHMENT NOTE 77
- 89 ESTABLISHED THE MOST WESTERLY CORNER OF LOT 80, SARA THURSTON PARK RECORD DISTANCE PER R30 FROM ACCEPTED MONUMENT 4511, PARALLEL WITH, PERPENDICULAR TO AND 20' FROM ESTABLISHMENT NOTE 44
- 90 ESTABLISHED THE NORTHEASTERLY RIGHT OF WAY OF WOODLAND DR. PARALLEL WITH, PERPENDICULAR 20' FROM ESTABLISHMENT NOTE 44 BETWEEN ESTABLISHMENT NOTES 79 AND ACCEPTED MONUMENT 4511
- 91 ESTABLISHED THE MOST SOUTHERLY CORNER OF PARCEL 104 RECORD DISTANCE PER R19 ON A LINE BETWEEN ESTABLISHMENT NOTE 78 AND ACCEPTED MONUMENT 4518
- 92 ESTABLISHED THE NORTHEASTERLY RIGHT OF WAY PARALLEL WITH, PERPENDICULAR 23' FROM ESTABLISHMENT NOTE 44 BETWEEN ESTABLISHMENT NOTES 73 AND 81
- 93 ESTABLISHED THE EASTERLY CORNER OF R48 HOLDING RECORD ANGLE AND DISTANCE PER R48 AT ESTABLISHMENT NOTE 84 FROM ESTABLISHMENT NOTE 65
- 94 ESTABLISHED THE EASTERLY CORNER OF R47 HOLDING RECORD ANGLE AND DISTANCE PER R47 AT ESTABLISHMENT NOTE 65 FROM ESTABLISHMENT NOTE 68
- 95 ESTABLISHED THE EASTERLY CORNER OF R46 HOLDING RECORD ANGLE AND DISTANCE PER R46 AT ESTABLISHMENT NOTE 63 FROM ESTABLISHMENT NOTE 64
- 96 ESTABLISHED THE CENTERLINE E.C. OF LAGUNA CANYON ROAD 1968 ALIGNMENT PER (R21) BY HOLDING RECORD DISTANCE NW'LY FROM ESTABLISHMENT NOTE 67 ALONG ESTABLISHMENT NOTE 68
- 97 ESTABLISHED THE 1968 CENTERLINE OF LAGUNA CANYON ROAD BY HOLDING RECORD RADIUS 2500.00 FEET PER R9 TANGENT TO A LINE ESTABLISHED BY ESTABLISHMENT NOTES ㉔ AND ㉕, AND LINE ESTABLISHMENT 68

REFERENCES

- (R1) = RECORD OF SURVEY RSB 305/30
- (R2) = RECORD OF SURVEY RSB 138/1-8
- (R3) = RECORD OF SURVEY RSB 291/13-14
- (R4) = PARCEL MAP PMB 66/15
- (R5) = OFFICIAL RECORD O.R. 1074/179
- (R6) = CORNER RECORD CR-2007-1482
- (R7) = RECORD OF SURVEY RSB 232/42-43
- (R8) = OFFICIAL RECORD O.R. 2304/195
- (R9) = RECORD OF SURVEY RSB 119/22-23
- (R10) = OFFICIAL RECORD O.R. 1055/250
- (R11) = COUNTY SURVEYOR TIE BOOK CSTB 86/1-46-27A-28A
- (R12) = OFFICIAL RECORD O.R. 440/192
- (R13) = OFFICIAL RECORD O.R. 2243/119
- (R14) = RECORD OF SURVEY RSB 114/10
- (R15) = CALTRANS CL TIES SR-73-008
- (R16) = CALTRANS SURVEY CONTROL MAP 001746-SM0583
- (R17) = OFFICIAL RECORD O.R. 6875/114
- (R18) = CALTRANS ALIGNMENT NOTES A269-001_013-020
- (R19) = LAGUNA CANYON CHANNEL (I02) PARCEL 104 ENCROACHMENT OP96/97-18
- (R20) = CAL TRANS ALIGNMENT NOTES ORA185 LGN B&A A269-001 009-012
- (R21) = RECORD OF SURVEY RSB 78/9
- (R23) = LAGUNA CANYON FRONTAGE ROAD OFFICIAL RECORD 6003/824
- (R25) = PARCEL MAP NO. 88-446, PMB-241/33
- (R26) = OFFICIAL RECORD O.R. 2094/609-610
- (R27) = OFFICIAL RECORD O.R. 2203/496
- (R28) = OFFICIAL RECORD O.R. 2318/488-490
- (R29) = CAL TRANS RIGHT OF WAY MAP, ROAD VII-ORA-185-LGN. B;A, FEB 1951
- (R30) = RECORD OF SURVEY RSB 4/16
- (R31) = OFFICIAL RECORD O.R. 3688/211
- (R32) = PARCEL MAP NO. 2005-168, PMB 367/45-46
- (R33) = PARCEL MAP, PMB 118/46
- (R34) = RECORD OF SURVEY, RSB 279/13
- (R35) = OFFICIAL RECORD O.R. 2221/524
- (R36) = OFFICIAL RECORD O.R. 3929/117
- (R37) = PARCEL MAP, PMB 66/44
- (R38) = OFFICIAL RECORD O.R. 5860/340
- (R39) = CORNER RECORD CR-2008-1607
- (R40) = CORNER RECORD CR-2008-1597
- (R41) = RECORD OF SURVEY RSB 304/28
- (R42) = CORNER RECORD CR-2008-1601
- (R43) = CORNER RECORD CR-2000-0345
- (R44) = CORNER RECORD CR-2007-2833
- (R45) = INSTRUMENT NO. 2003000700579 O.R.
- (R46) = OFFICIAL RECORD O.R. 3915/558
- (R47) = OFFICIAL RECORD O.R. 3898/551
- (R48) = OFFICIAL RECORD O.R. 3893/433
- (R49) = OFFICIAL RECORD O.R. 6454/188-190
- (R50) = OFFICIAL RECORD O.R. 3688/211-213
- (R51) = OFFICIAL RECORD O.R. 2233/164
- (R52) = OFFICIAL RECORD O.R. 2349/337
- (R53) = OFFICIAL RECORD O.R. 2209/490
- (R54) = OFFICIAL RECORD O.R. 2314/215
- (R55) = OFFICIAL RECORD O.R. 2185/190
- (R56) = OFFICIAL RECORD O.R. 6459/798
- (R57) = OFFICIAL RECORD O.R. 3906/367
- (R58) = OFFICIAL RECORD O.R. 3893/421
- (R59) = OFFICIAL RECORD O.R. 1132/209

NOTE

PARCELS SHOWN WITHOUT BEARING AND DISTANCES ARE FOR GRAPHICAL PURPOSES ONLY.

LEGEND

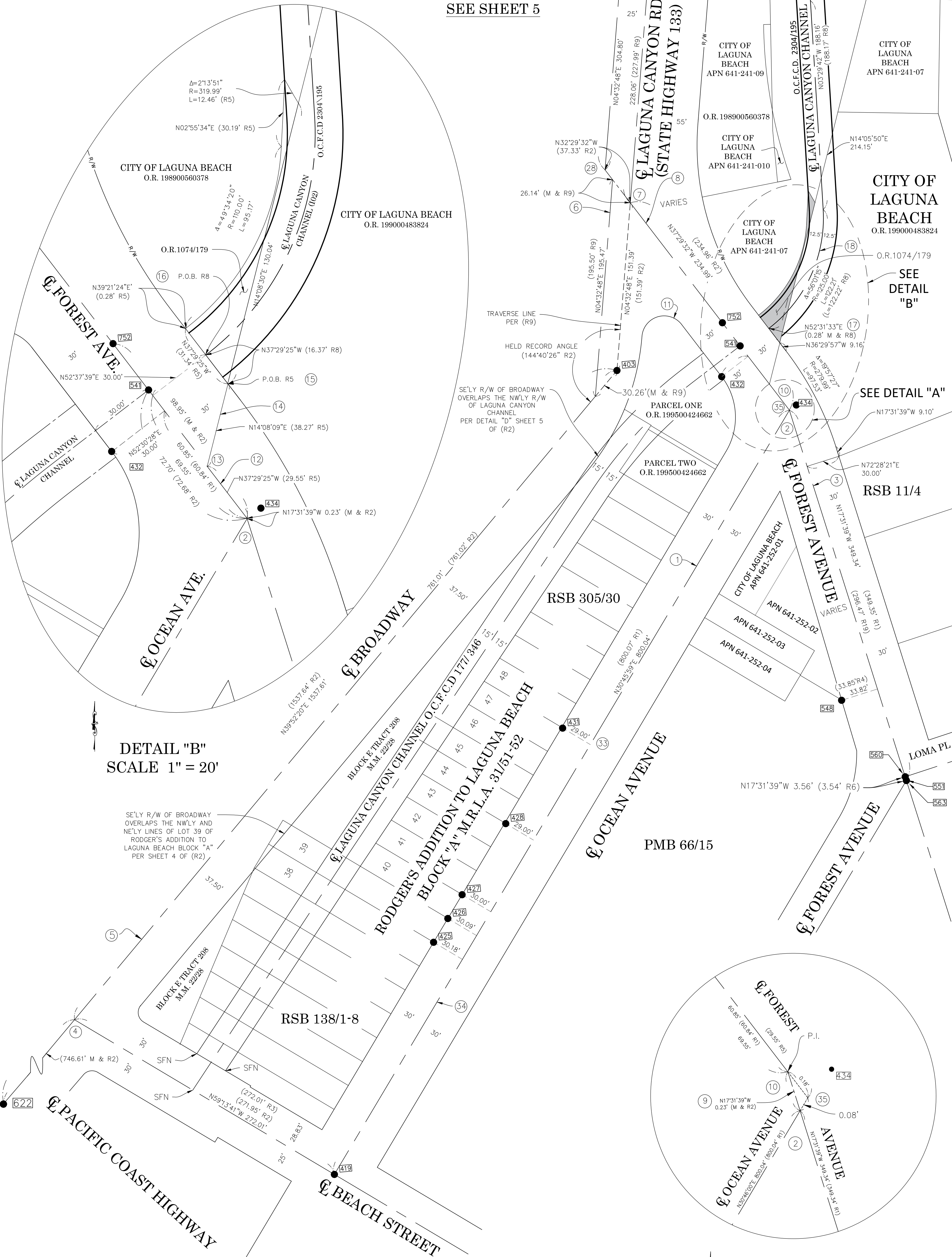
- FOUND MONUMENT AS NOTED
- ▲ ESTABLISHED BY TIES SEE ESTABLISHMENT NOTES

LINE TABLE

CL ROADWAY	_____	_____	_____	_____	_____	_____	_____	_____	_____
SURVEY GEOMETRY	-----	-----	-----	-----	-----	-----	-----	-----	-----
STATE HIGHWAY RIGHT-OF-WAY	_____	_____	R/W	_____	_____	_____	R/W	_____	_____

6 5 4	6/27/22	ADDITIONAL TOPO FRONTIER & GAS UTILITIES	COUNTY OF ORANGE OC PUBLIC WORKS		
	8/9/21	UPDATED SOFFIT ELEVATIONS	OC SURVEY/FIELD SERVICES/BOUNDARY ANALYSIS & MAPPING		
4	1/20/21	ADDITIONAL TOPO EAST OF THE CENTERLINE OF LAGUNA CANYON FRONTAGE ROAD & BETWEEN C/L ALIGNMENT STATIONS 16+00 & 28+50	LAGUNA CHANNEL (I02) CHANNEL MAINTENANCE PROJECT		
TOPOGRAPHIC MAP					
FROM: FOREST AVE. TO: CANYON ACRES DRIVE					
3	12/5/20	ALIGNMENT UPDATE	DATE OF SURVEY: NOV 2019		BY: T. LOFGREEN
2	7/2/20	PTR UPDATE AT WOODLAND	TOPOGRAPHIC MAPPING		BY: T. LOFGREEN/ R. BELTRAN
1	1/29/20	TEXT UPDATES	OFFICE CHECK		BY: M. KUBISTY, PLS.
MARK	DATE	ITEM	FIELD CHECK		BY: T. LOFGREEN
REVISIONS			SCALE: _____ W.O. #EF21286 FILE NO. _____ FILE: LAGUNA_CHANNEL_BOUNDARY_PHASE_II_2019.DWG		

SEE SHEET 5



DETAIL "B"
SCALE 1" = 20'

SE'LY R/W OF BROADWAY
OVERLAPS THE NW'LY AND
NE'LY LINES OF LOT 39 OF
RODGER'S ADDITION TO
LAGUNA BEACH BLOCK "A"
PER SHEET 4 OF (R2)

DETAIL "A"
NTS

NOTE

PARCELS SHOWN WITHOUT BEARING AND DISTANCES ARE FOR GRAPHICAL PURPOSES ONLY.

LEGEND

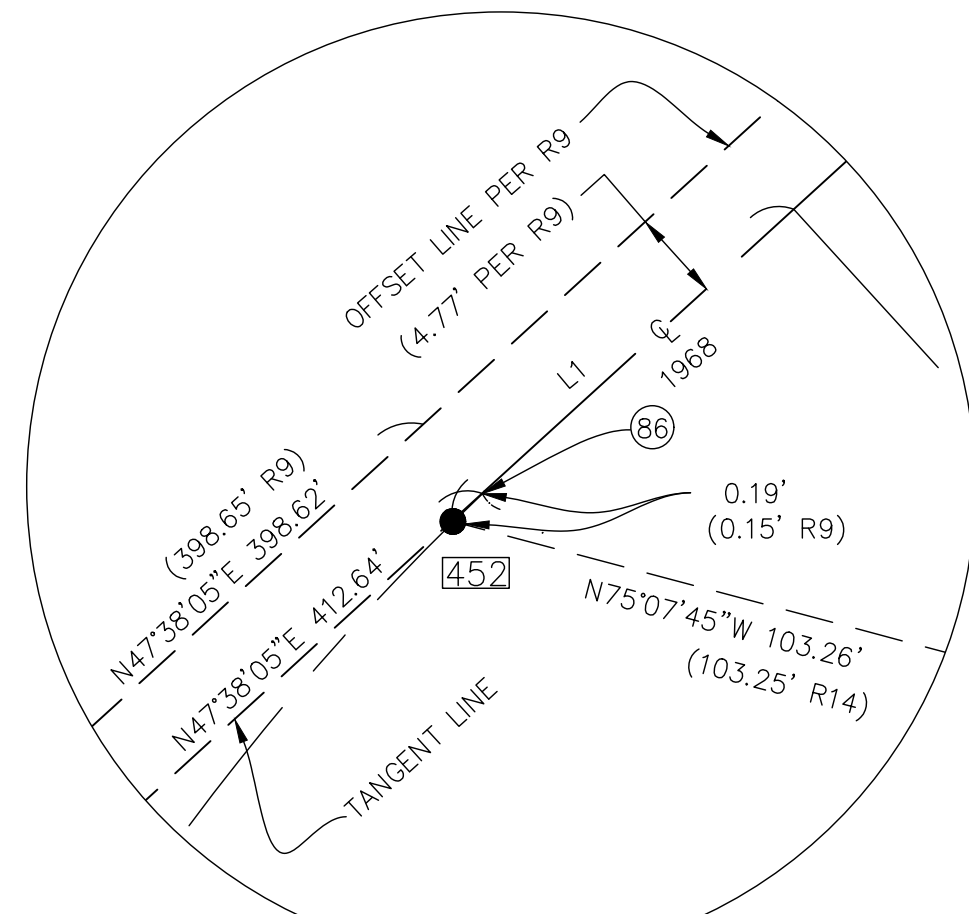
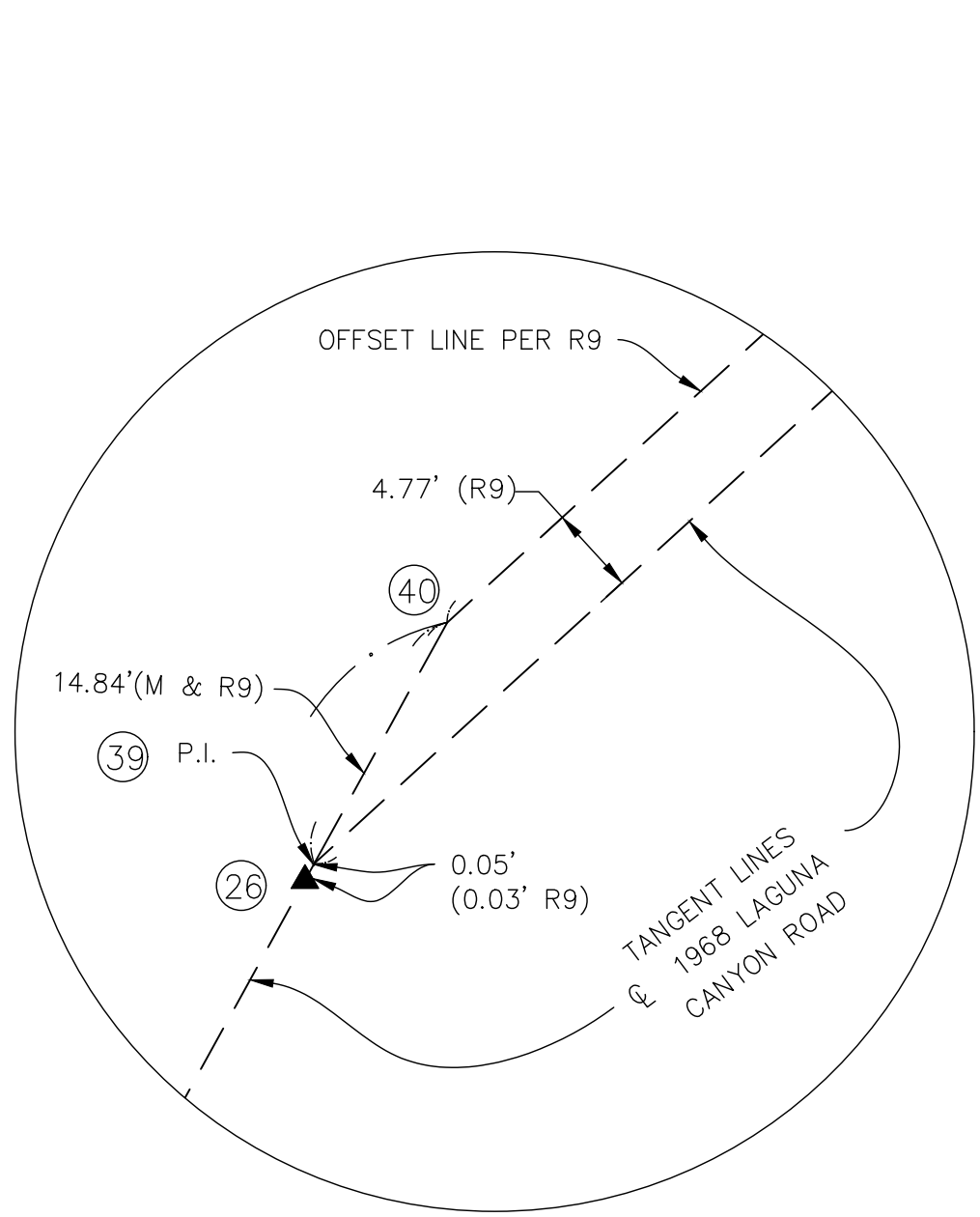
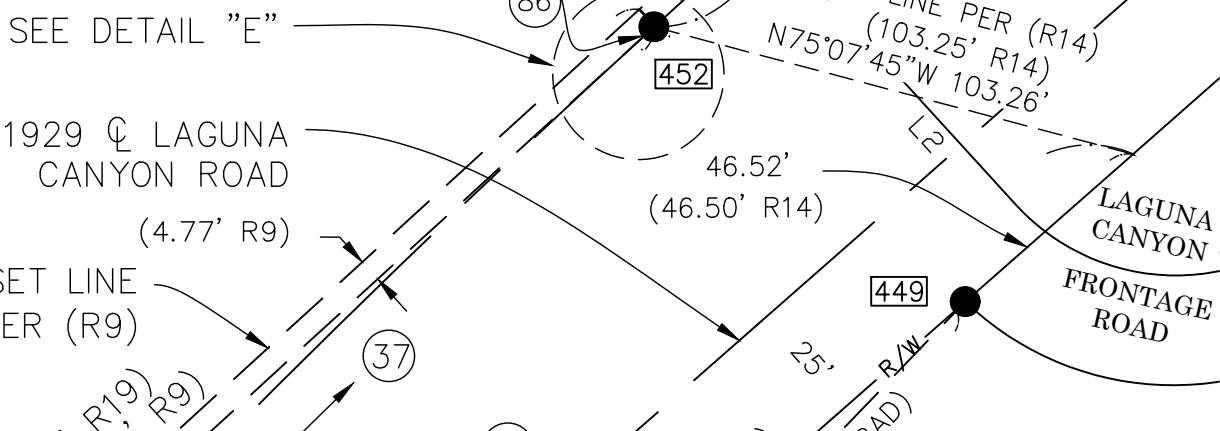
- FOUND MONUMENT AS NOTED
- ▲ ESTABLISHED BY TIES SEE ESTABLISHMENT NOTES

LINE TABLE

CL. ROADWAY	_____
SURVEY GEOMETRY	_____
STATE HIGHWAY RIGHT-OF-WAY	_____ R/W _____ R/W _____

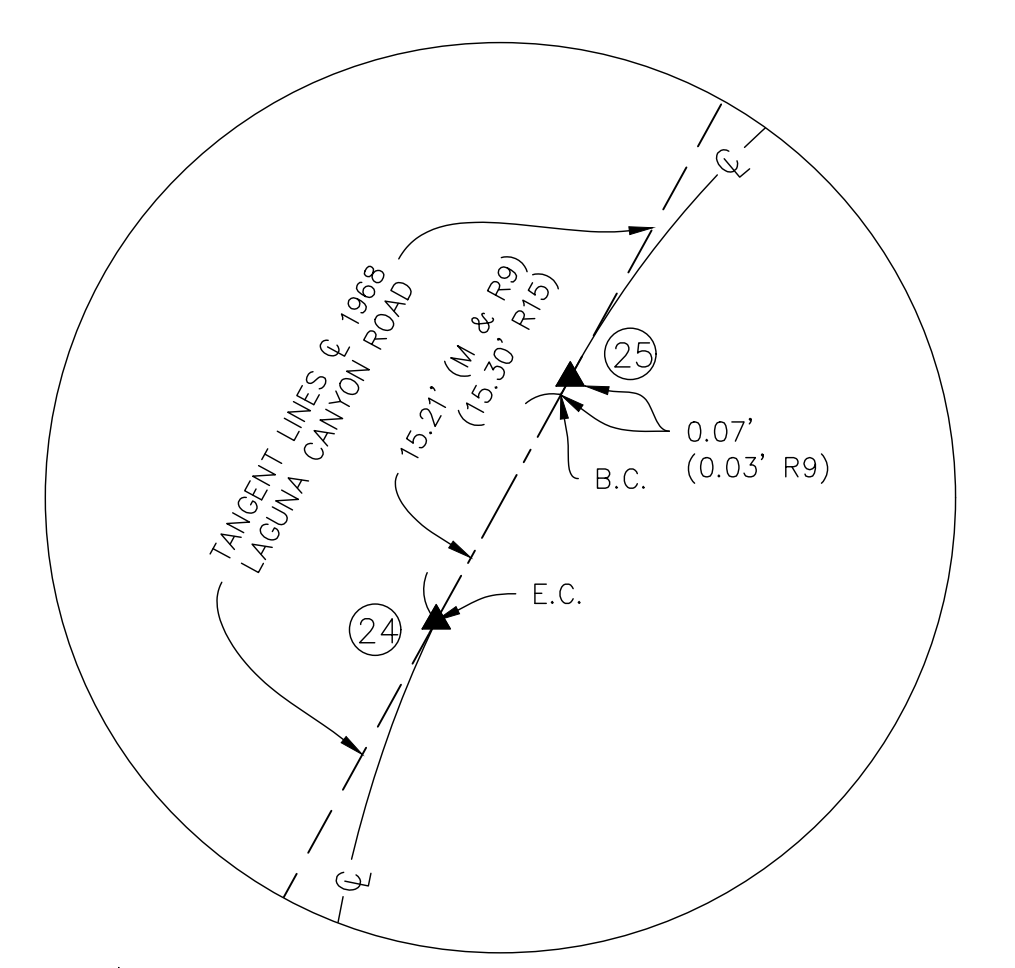
6/27/22	ADDITIONAL TOPO FRONTIER & GAS UTILITIES	OC SURVEY/FIELD SERVICES/BOUNDARY ANALYSIS & MAPPING	COUNTY OF ORANGE
8/9/21	UPDATED SOFFIT ELEVATIONS		OC PUBLIC WORKS
1/20/21	ADDITIONAL TOPO EAST OF THE CENTERLINE OF LAGUNA CANYON FRONTAGE ROAD & BETWEEN C/L ALIGNMENT STATIONS 16+00 & 28+50		LAGUNA CHANNEL (I02) CHANNEL MAINTENANCE PROJECT
12/5/20	ALIGNMENT UPDATE		TOPOGRAPHIC MAP
7/2/20	PTR UPDATE AT WOODLAND		FROM: FOREST AVE.
1/29/20	TEXT UPDATES		TO: CANYON ACRES DRIVE
MARK	DATE	ITEM	DATE OF SURVEY: NOV 2019
			BY: T. LOFGREEN
			TOPOGRAPHIC MAPPING
			BY: T. LOFGREEN / R. BELTRAN
			OFFICE CHECK
			BY: M. KUBISTY, PLS.
			FIELD CHECK
			BY: T. LOFGREEN
			SCALE: 1"=40' [W.O. #EF21286] FILE NO.
			FILE: LAGUNA_CHANNEL_BOUNDARY_PHASE II_2019.DWG
			REVISIONS

SEE SHEET 6

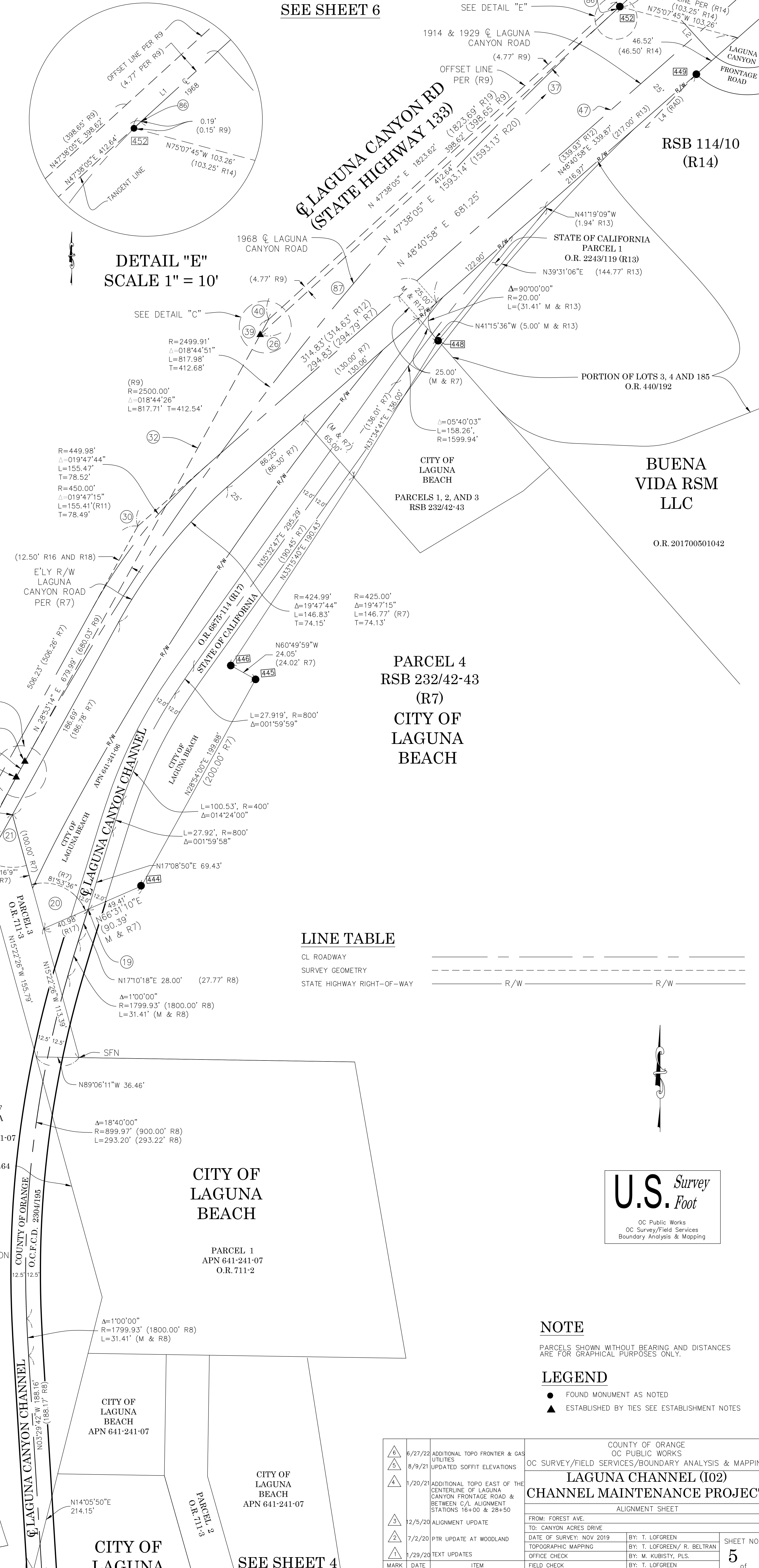
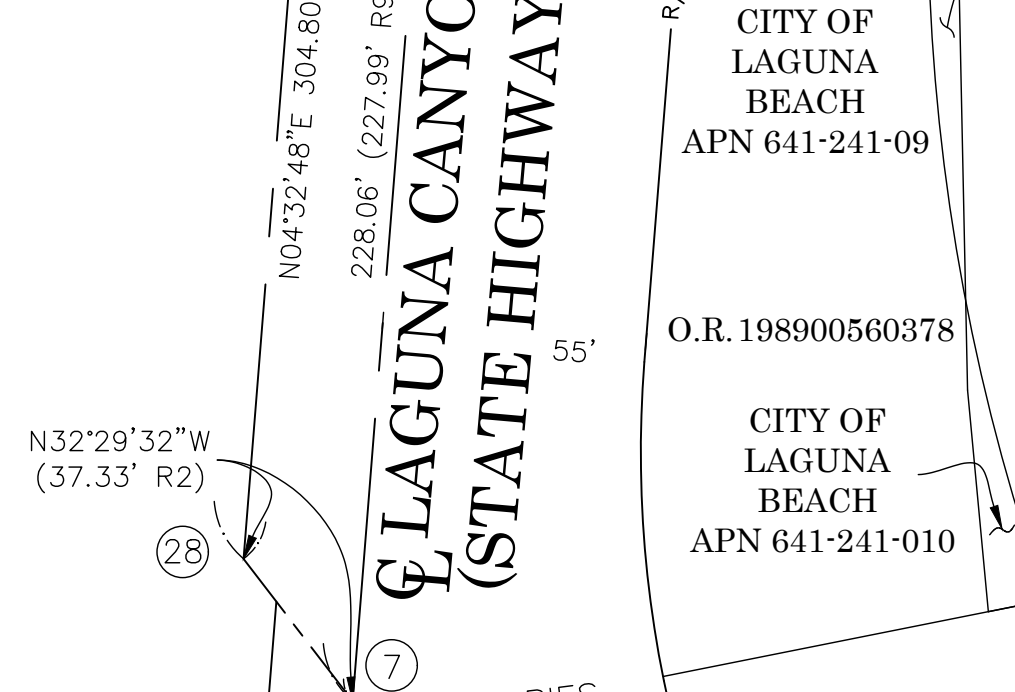
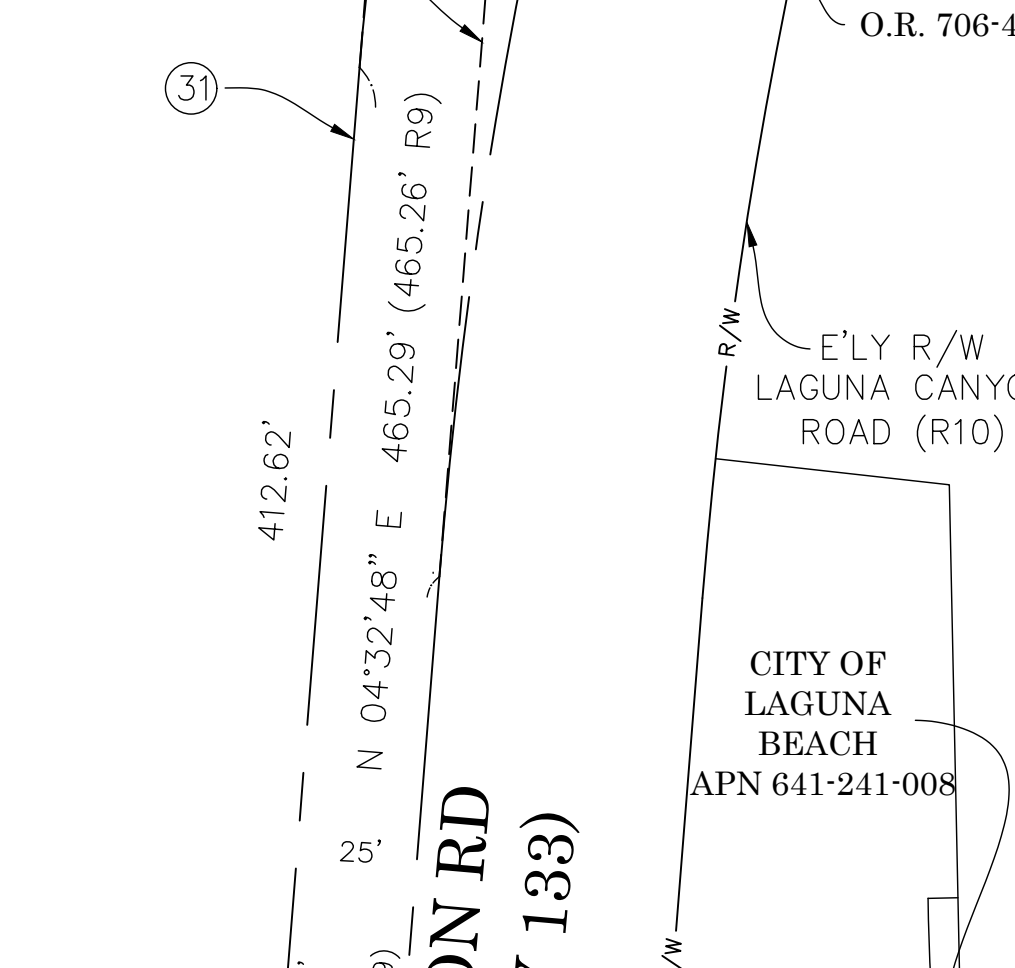
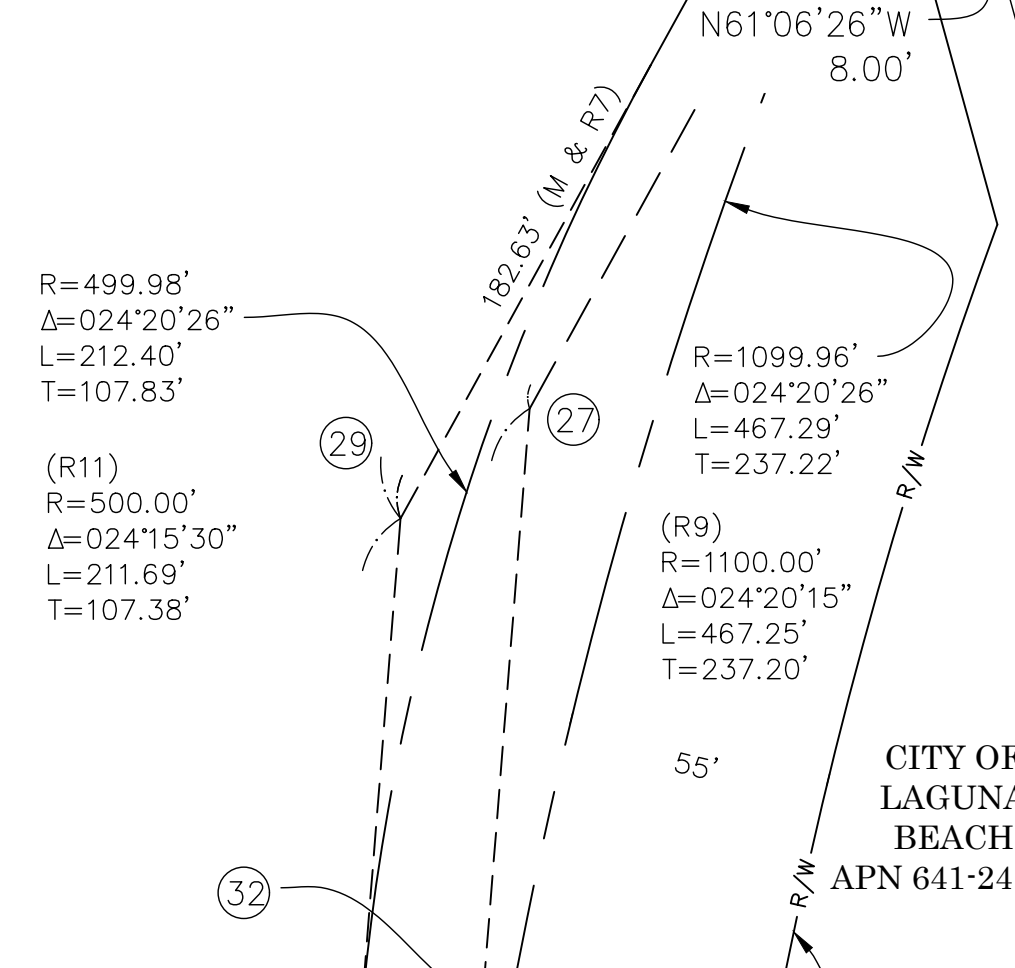
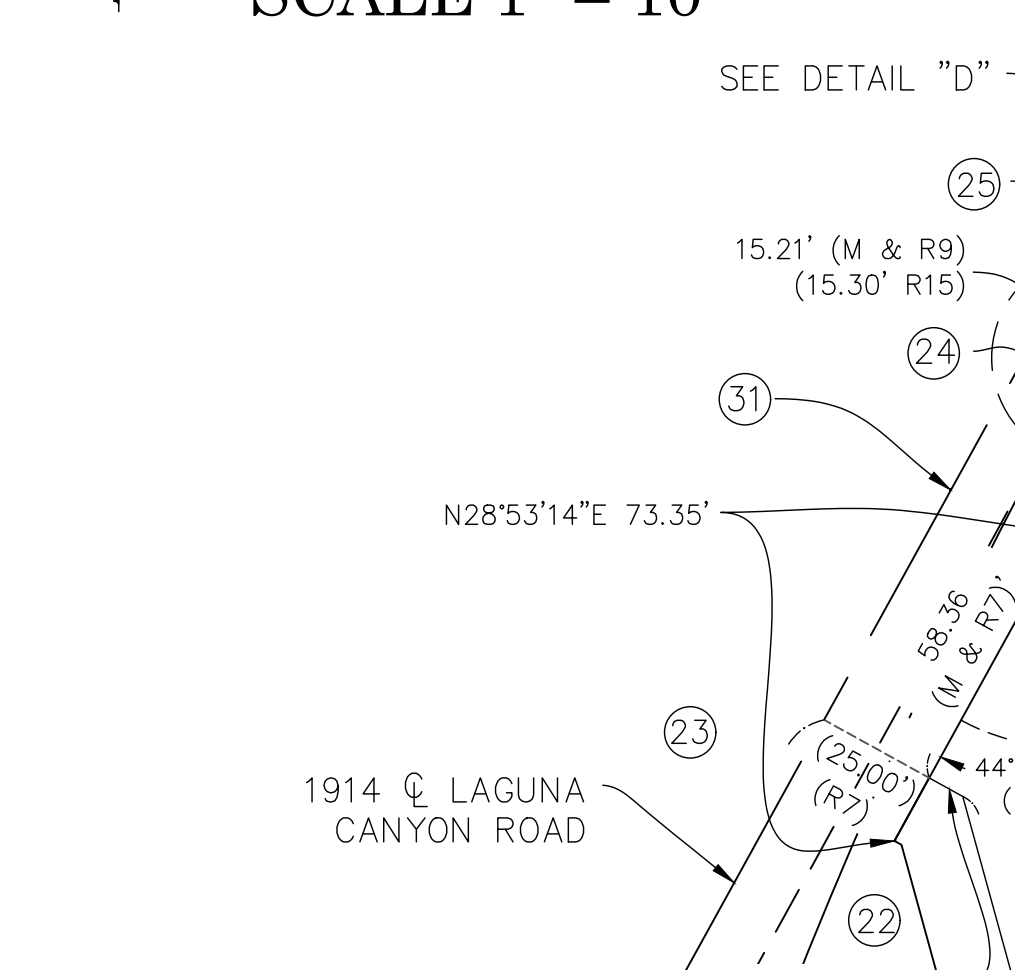


DETAIL "E"
SCALE 1" = 10'

DETAIL "C"
SCALE 1" = 10'



DETAIL "D"
SCALE 1" = 10'



LINE TABLE

CL ROADWAY	
SURVEY GEOMETRY	
STATE HIGHWAY RIGHT-OF-WAY	

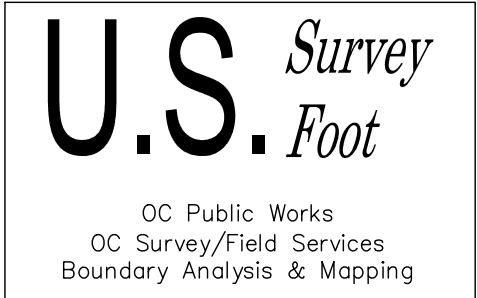
NOTE

PARCELS SHOWN WITHOUT BEARING AND DISTANCES ARE FOR GRAPHICAL PURPOSES ONLY.

LEGEND

- FOUND MONUMENT AS NOTED
- ▲ ESTABLISHED BY TIES SEE ESTABLISHMENT NOTES

6/27/22	ADDITIONAL TOPO FRONTIER & GAS UTILITIES	COUNTY OF ORANGE	OC PUBLIC WORKS
8/9/21	UPDATED SOFFIT ELEVATIONS	OC SURVEY/FIELD SERVICES/BOUNDARY ANALYSIS & MAPPING	
1/20/21	ADDITIONAL TOPO EAST OF THE CENTERLINE OF LAGUNA CANYON FRONTAGE ROAD & BETWEEN C/L ALIGNMENT STATIONS 16+00 & 28+50	LAGUNA CHANNEL (I02) CHANNEL MAINTENANCE PROJECT	
12/5/20	ALIGNMENT UPDATE	ALIGNMENT SHEET	
7/2/20	PTR UPDATE AT WOODLAND	FROM: FOREST AVE.	
1/29/20	TEXT UPDATES	TO: CANYON ACRES DRIVE	
		DATE OF SURVEY: NOV 2019	BY: T. LOFGREEN
		TOPOGRAPHIC MAPPING	BY: T. LOFGREEN/ R. BELTRAN
		OFFICE CHECK	BY: M. KUBISTY, PLS.
		FIELD CHECK	BY: T. LOFGREEN
		SCALE: 1"=40' W.O. #EF21286 FILE NO.	
		FILE: LAGUNA_CHANNEL_BOUNDARY_PHASE II_2019.DWG	



CITY OF LAGUNA BEACH

PARCEL 1
APN 641-241-07
O.R. 711-2

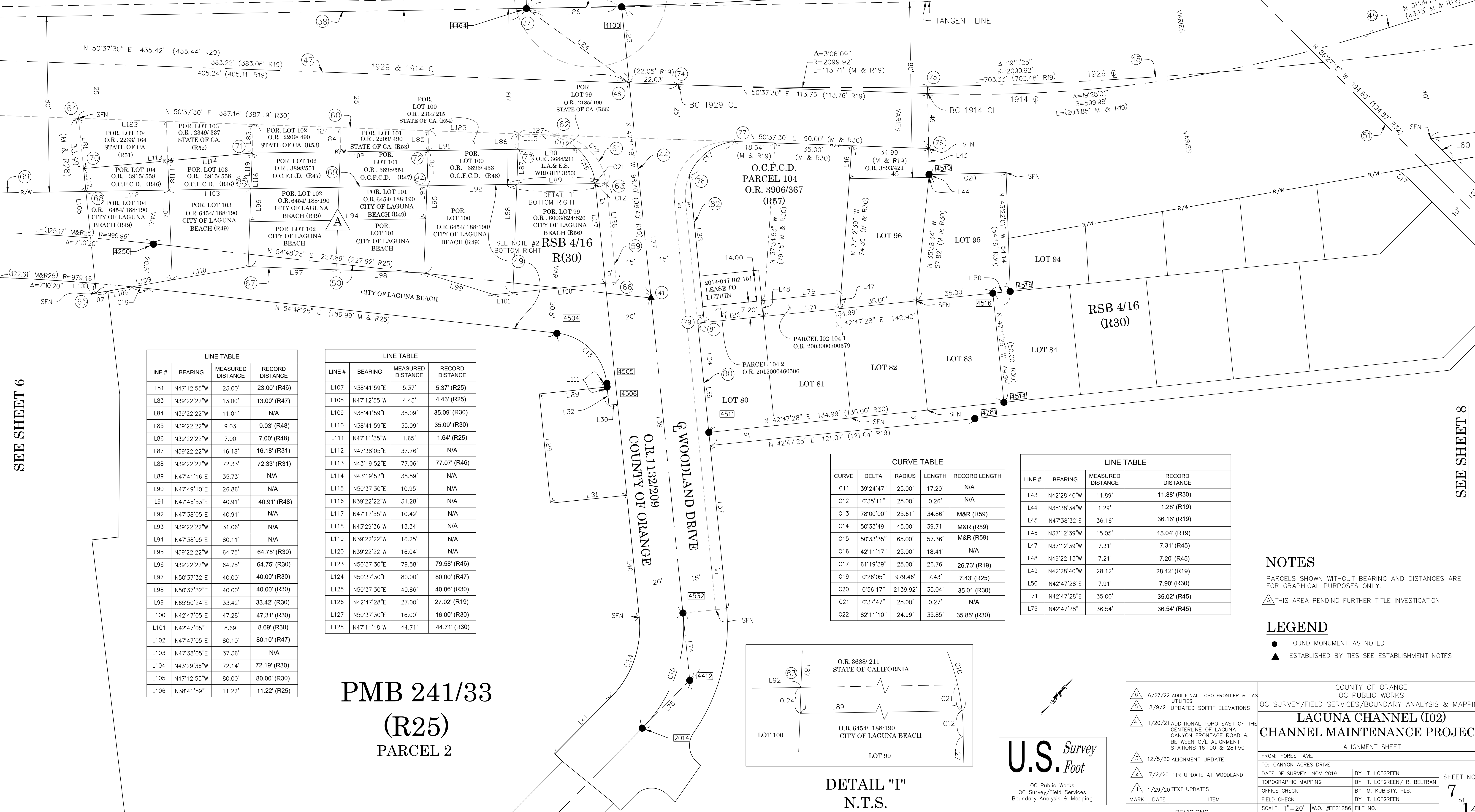
CITY OF LAGUNA

SEE SHEET 4

LINE TABLE

CL ROADWAY		
SURVEY GEOMETRY		
STATE HIGHWAY RIGHT-OF-WAY	R/W	R/W

LAGUNA CANYON ROAD
(STATE HIGHWAY 133)



LINE #	BEARING	MEASURED DISTANCE	RECORD DISTANCE
L81	N47°12'55"W	23.00'	23.00' (R46)
L83	N39°22'22"W	13.00'	13.00' (R47)
L84	N39°22'22"W	11.01'	N/A
L85	N39°22'22"W	9.03'	9.03' (R48)
L86	N39°22'22"W	7.00'	7.00' (R48)
L87	N39°22'22"W	16.18'	16.18' (R31)
L88	N39°22'22"W	72.33'	72.33' (R31)
L89	N47°41'16"E	35.73'	N/A
L90	N47°49'10"E	26.86'	N/A
L91	N47°46'53"E	40.91'	40.91' (R48)
L92	N47°38'05"E	40.91'	N/A
L93	N39°22'22"W	31.06'	N/A
L94	N47°38'05"E	80.11'	N/A
L95	N39°22'22"W	64.75'	64.75' (R30)
L96	N39°22'22"W	64.75'	64.75' (R30)
L97	N50°37'32"E	40.00'	40.00' (R30)
L98	N50°37'32"E	40.00'	40.00' (R30)
L99	N65°50'24"E	33.42'	33.42' (R30)
L100	N42°47'05"E	47.28'	47.31' (R30)
L101	N42°47'05"E	8.69'	8.69' (R30)
L102	N47°47'05"E	80.10'	80.10' (R47)
L103	N47°38'05"E	37.36'	N/A
L104	N43°29'36"W	72.14'	72.19' (R30)
L105	N47°12'55"W	80.00'	80.00' (R30)
L106	N38°41'59"E	11.22'	11.22' (R25)

LINE #	BEARING	MEASURED DISTANCE	RECORD DISTANCE
L107	N38°41'59"E	5.37'	5.37' (R25)
L108	N47°12'55"W	4.43'	4.43' (R25)
L109	N38°41'59"E	35.09'	35.09' (R30)
L110	N38°41'59"E	35.09'	35.09' (R30)
L111	N47°11'35"W	1.65'	1.64' (R25)
L112	N47°38'05"E	37.76'	N/A
L113	N43°19'52"E	77.06'	77.07' (R46)
L114	N43°19'52"E	38.59'	N/A
L115	N50°37'30"E	10.95'	N/A
L116	N39°22'22"W	31.28'	N/A
L117	N47°12'55"W	10.49'	N/A
L118	N43°29'36"W	13.34'	N/A
L119	N39°22'22"W	16.25'	N/A
L120	N39°22'22"W	16.04'	N/A
L123	N50°37'30"E	79.58'	79.58' (R46)
L124	N50°37'30"E	80.00'	80.00' (R47)
L125	N50°37'30"E	40.86'	40.86' (R30)
L126	N42°47'28"E	27.00'	27.02' (R19)
L127	N50°37'30"E	16.00'	16.00' (R30)
L128	N47°11'18"W	44.71'	44.71' (R30)

PMB 241/33
(R25)
PARCEL 2

CURVE	DELTA	RADIUS	LENGTH	RECORD LENGTH
C11	39°24'47"	25.00'	17.20'	N/A
C12	0°35'11"	25.00'	0.26'	N/A
C13	78°00'00"	25.61'	34.86'	M&R (R59)
C14	50°33'49"	45.00'	39.71'	M&R (R59)
C15	50°33'35"	65.00'	57.36'	M&R (R59)
C16	42°11'17"	25.00'	18.41'	N/A
C17	61°19'39"	25.00'	26.76'	26.73' (R19)
C19	0°26'05"	979.46'	7.43'	7.43' (R25)
C20	0°56'17"	2139.92'	35.04'	35.01' (R30)
C21	0°37'47"	25.00'	0.27'	N/A
C22	82°11'10"	24.99'	35.85'	35.85' (R30)

LINE #	BEARING	MEASURED DISTANCE	RECORD DISTANCE
L43	N42°28'40"W	11.89'	11.88' (R30)
L44	N35°38'34"W	1.29'	1.28' (R19)
L45	N47°38'32"E	36.16'	36.16' (R19)
L46	N37°12'39"W	15.05'	15.04' (R19)
L47	N37°12'39"W	7.31'	7.31' (R45)
L48	N49°22'13"W	7.21'	7.20' (R45)
L49	N42°28'40"W	28.12'	28.12' (R19)
L50	N42°47'28"E	7.91'	7.90' (R30)
L71	N42°47'28"E	35.00'	35.02' (R45)
L76	N42°47'28"E	36.54'	36.54' (R45)

NOTES
PARCELS SHOWN WITHOUT BEARING AND DISTANCES ARE FOR GRAPHICAL PURPOSES ONLY.
THIS AREA PENDING FURTHER TITLE INVESTIGATION

LEGEND
● FOUND MONUMENT AS NOTED
▲ ESTABLISHED BY TIES SEE ESTABLISHMENT NOTES

6/27/22	ADDITIONAL TOPO FRONTIER & GAS UTILITIES	COUNTY OF ORANGE OC PUBLIC WORKS
8/9/21	UPDATED SOFFIT ELEVATIONS	OC SURVEY/FIELD SERVICES/BOUNDARY ANALYSIS & MAPPING
1/20/21	ADDITIONAL TOPO EAST OF THE CENTERLINE OF LAGUNA CANYON FRONTAGE ROAD & BETWEEN C/L ALIGNMENT STATIONS 16+00 & 28+50	LAGUNA CHANNEL (I02) CHANNEL MAINTENANCE PROJECT
12/5/20	ALIGNMENT UPDATE	ALIGNMENT SHEET
7/2/20	PTR UPDATE AT WOODLAND	FROM: FOREST AVE. TO: CANYON ACRES DRIVE
1/29/20	TEXT UPDATES	DATE OF SURVEY: NOV 2019 TOPOGRAPHIC MAPPING
MARK	DATE	ITEM
REVISIONS	DATE	ITEM
6/27/22	ADDITIONAL TOPO FRONTIER & GAS UTILITIES	COUNTY OF ORANGE OC PUBLIC WORKS
8/9/21	UPDATED SOFFIT ELEVATIONS	OC SURVEY/FIELD SERVICES/BOUNDARY ANALYSIS & MAPPING
1/20/21	ADDITIONAL TOPO EAST OF THE CENTERLINE OF LAGUNA CANYON FRONTAGE ROAD & BETWEEN C/L ALIGNMENT STATIONS 16+00 & 28+50	LAGUNA CHANNEL (I02) CHANNEL MAINTENANCE PROJECT
12/5/20	ALIGNMENT UPDATE	ALIGNMENT SHEET
7/2/20	PTR UPDATE AT WOODLAND	FROM: FOREST AVE. TO: CANYON ACRES DRIVE
1/29/20	TEXT UPDATES	DATE OF SURVEY: NOV 2019 TOPOGRAPHIC MAPPING
MARK	DATE	ITEM
REVISIONS	DATE	ITEM
6/27/22	ADDITIONAL TOPO FRONTIER & GAS UTILITIES	COUNTY OF ORANGE OC PUBLIC WORKS
8/9/21	UPDATED SOFFIT ELEVATIONS	OC SURVEY/FIELD SERVICES/BOUNDARY ANALYSIS & MAPPING
1/20/21	ADDITIONAL TOPO EAST OF THE CENTERLINE OF LAGUNA CANYON FRONTAGE ROAD & BETWEEN C/L ALIGNMENT STATIONS 16+00 & 28+50	LAGUNA CHANNEL (I02) CHANNEL MAINTENANCE PROJECT
12/5/20	ALIGNMENT UPDATE	ALIGNMENT SHEET
7/2/20	PTR UPDATE AT WOODLAND	FROM: FOREST AVE. TO: CANYON ACRES DRIVE
1/29/20	TEXT UPDATES	DATE OF SURVEY: NOV 2019 TOPOGRAPHIC MAPPING
MARK	DATE	ITEM
REVISIONS	DATE	ITEM
6/27/22	ADDITIONAL TOPO FRONTIER & GAS UTILITIES	COUNTY OF ORANGE OC PUBLIC WORKS
8/9/21	UPDATED SOFFIT ELEVATIONS	OC SURVEY/FIELD SERVICES/BOUNDARY ANALYSIS & MAPPING
1/20/21	ADDITIONAL TOPO EAST OF THE CENTERLINE OF LAGUNA CANYON FRONTAGE ROAD & BETWEEN C/L ALIGNMENT STATIONS 16+00 & 28+50	LAGUNA CHANNEL (I02) CHANNEL MAINTENANCE PROJECT
12/5/20	ALIGNMENT UPDATE	ALIGNMENT SHEET
7/2/20	PTR UPDATE AT WOODLAND	FROM: FOREST AVE. TO: CANYON ACRES DRIVE
1/29/20	TEXT UPDATES	DATE OF SURVEY: NOV 2019 TOPOGRAPHIC MAPPING
MARK	DATE	ITEM
REVISIONS	DATE	ITEM

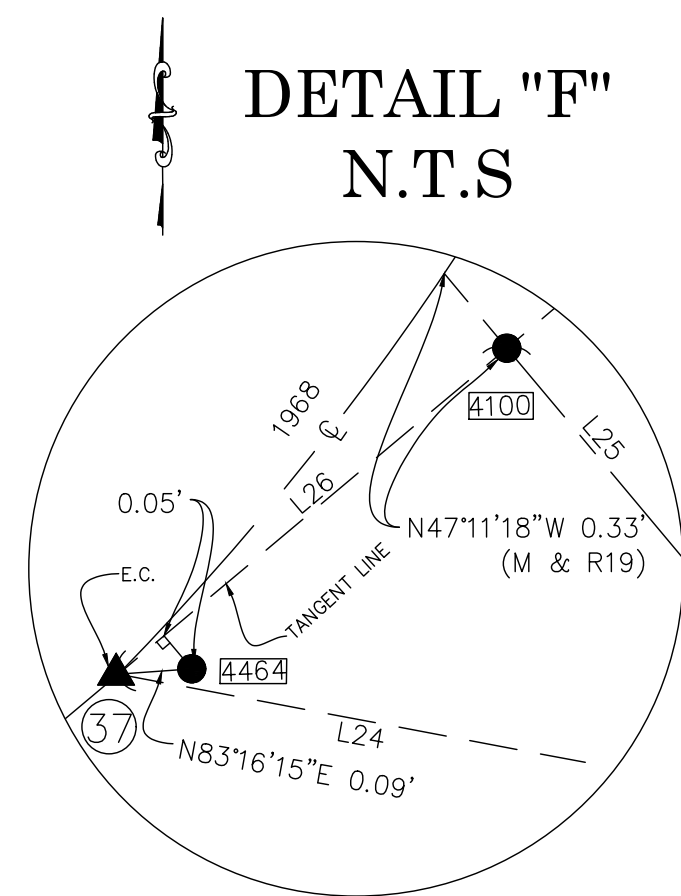
SEE SHEET 8

CL ROADWAY _____

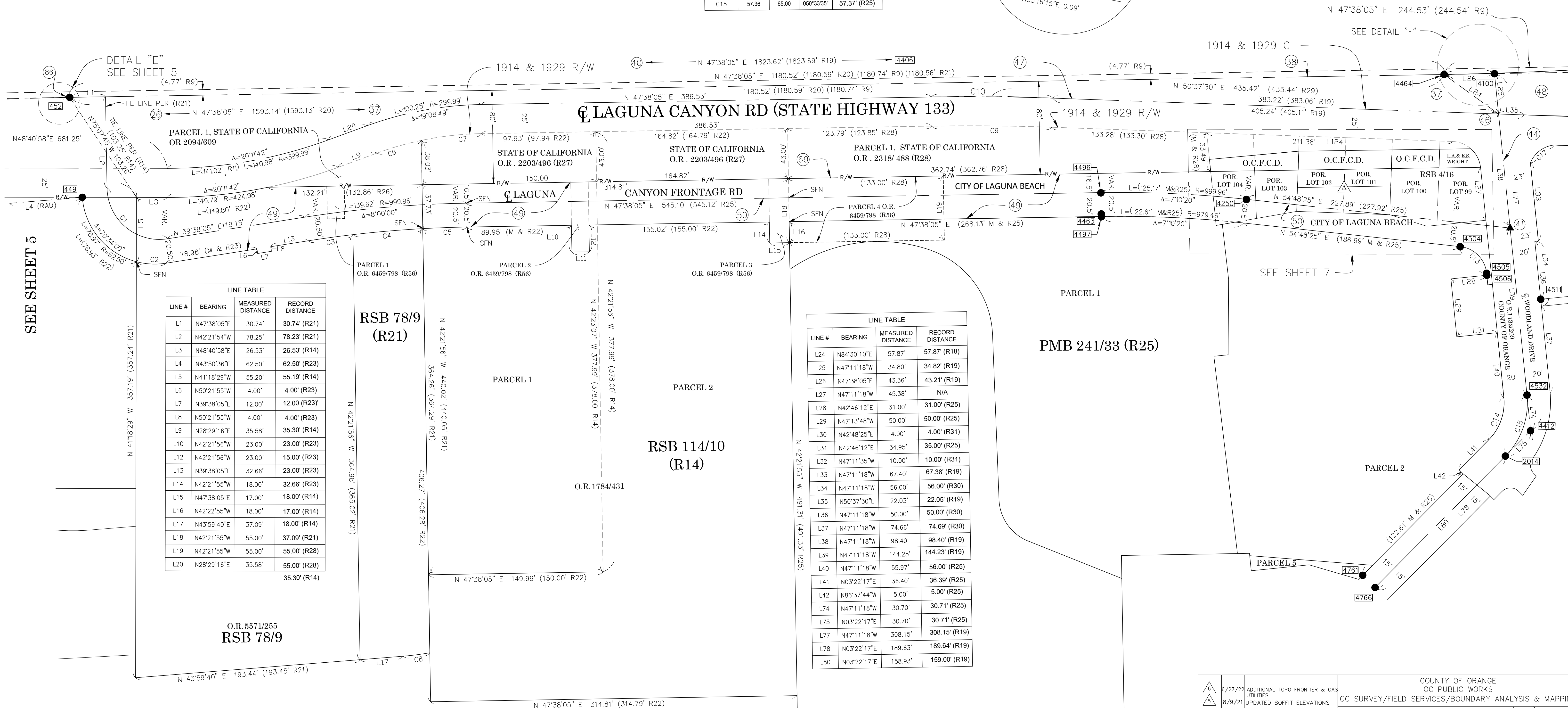
SURVEY GEOMETRY _____

STATE HIGHWAY RIGHT-OF-WAY _____ R/W _____ R/W _____

CURVE TABLE				
CURVE #	LENGTH	RADIUS	DELTA	RECORD DISTANCE
C1	76.97	45.00	098°00'00"	76.97' (R21)
C2	25.79	62.50	023°38'31"	25.83' (R14)
C3	38.76	979.46	002°16'02"	38.76' (R14)
C4	60.15	979.46	003°31'06"	60.16' (R14)
C5	37.85	979.46	002°12'52"	37.84' (R14)
C6	39.51	274.99	008°13'58"	39.74' (R14)
C7	52.38	274.99	010°54'50"	52.38' (R14)
C8	23.13	249.99	005°18'02"	23.13' (R21)
C9	103.08	1794.93	002°59'25"	102.98' (R28)
C10	134.08	1999.39	002°59'25"	104.43' (R19)
C11	34.86	25.61	078°00'00"	34.86' (R25)
C14	39.71	45.00	050°33'49"	39.72' (R25)
C15	57.36	65.00	050°33'35"	57.37' (R25)



SEE SHEET 7



U.S. *Survey Foot*
OC Public Works
OC Survey/Field Services
Boundary Analysis & Mapping

● FOUND MONUMENT AS NOTED
▲ ESTABLISHED BY TIES SEE ESTABLISHMENT NOTES

PARCELS SHOWN WITHOUT BEARING AND DISTANCES ARE FOR GRAPHICAL PURPOSES ONLY.

THIS AREA PENDING FURTHER TITLE INVESTIGATION

LINE TABLE			
LINE #	BEARING	MEASURED DISTANCE	RECORD DISTANCE
L24	N84°30'10"E	57.87'	57.87' (R18)
L25	N47°11'18"W	34.80'	34.82' (R19)
L26	N47°38'05"E	43.36'	43.21' (R19)
L27	N47°11'18"W	45.38'	N/A
L28	N42°46'12"E	31.00'	31.00' (R25)
L29	N47°13'48"W	50.00'	50.00' (R25)
L30	N42°48'25"E	34.95'	4.00' (R31)
L31	N42°46'12"E	4.00'	35.00' (R25)
L32	N47°11'35"W	10.00'	10.00' (R31)
L33	N47°11'18"W	67.40'	67.38' (R19)
L34	N47°11'18"W	56.00'	56.00' (R30)
L35	N50°37'30"E	22.03'	22.05' (R19)
L36	N47°11'18"W	50.00'	50.00' (R30)
L37	N47°11'18"W	74.66'	74.69' (R30)
L38	N47°11'18"W	98.40'	98.40' (R19)
L39	N47°11'18"W	144.25'	144.23' (R19)
L40	N47°11'18"W	55.97'	56.00' (R25)
L41	N03°22'17"E	36.40'	36.39' (R25)
L42	N86°37'44"W	5.00'	5.00' (R25)
L74	N47°11'18"W	50.70'	30.71' (R25)
L75	N03°22'17"E	30.70'	30.71' (R25)
L77	N47°11'18"W	308.15'	308.15' (R19)
L78	N03°22'17"E	189.63'	189.64' (R19)
L80	N03°22'17"E	158.93'	159.00' (R19)

PROPOSED OPEN SPACE
TO BE DEDICATED TO
THE CITY OF LAGUNA BEACH

<div><div>8</div><div>5</div></div>	6/27/22	ADDITIONAL TOPO FRONTIER & GAS UTILITIES	COUNTY OF ORANGE OC PUBLIC WORKS		
	8/9/21	UPDATED SOFFIT ELEVATIONS		OC SURVEY/FIELD SERVICES/BOUNDARY ANALYSIS & MAPPING	
<div><div>4</div></div>	1/20/21	ADDITIONAL TOPO EAST OF THE CENTERLINE OF LAGUNA CANYON FRONTAGE ROAD & BETWEEN C/L ALIGNMENT STATIONS 16+00 & 28+50	LAGUNA CHANNEL (I02) CHANNEL MAINTENANCE PROJECT		
			ALIGNMENT SHEET		
<div><div>3</div></div>	12/5/20	ALIGNMENT UPDATE	FROM: FOREST AVE.		
<div><div>2</div></div>	7/2/20	PTR UPDATE AT WOODLAND	TO: CANYON ACRES DRIVE		
<div><div>1</div></div>	1/29/20	TEXT UPDATES	DATE OF SURVEY: NOV 2019	BY: T. LOFGREEN	SHEET NO. 6 of 14
			TOPOGRAPHIC MAPPING	BY: T. LOFGREEN/ R. BELTRAN	
			OFFICE CHECK	BY: M. KUBISTY, PLS.	
			FIELD CHECK	BY: T. LOFGREEN	
MARK	DATE	ITEM	SCALE: 1"= 40' I.W.O. #FF21286 FILE NO.		
REVISIONS			FILE: LAGUNA_CHANNEL_BOUNDARY_PHASE II_2019.DWG		

6 of 14

LEGEND

SYMBOL PATTERN KEY

- 4" Pipe Inlet / Pipe Outlet Unless Otherwise Noted
- Vault - Electrical
- Steel Sign
- Water Meter
- Sewer Manhole
- Single Light Pole
- Water Valve
- Pull box - Electrical
- Fire Hydrant
- Tree
- Storm Drain Manhole
- Vault Undefined
- Steel Grate Inlet
- Telephone Pull Box
- Gas Valve
- TV Cable Control Box
- Catch Basin
- Double Gate
- Sewer Clean Out
- Drop Inlet
- Electric Meter
- Irrigation Pull Box
- Irrigation Valve
- Plastic Electric Outlet Box
- Plastic Yard Light
- Gas Meter
- Undefined Control Box
- Bush
- Double Light Pole
- Electric Manhole
- Undefined Parking Meter
- Rock - Boulder
- Temporary Support Beam For Shoring
- Utility Pole
- Palm Tree
- Mail Box
- Post
- Water Vault
- Guy Anchor
- Telephone Vault
- Sign Board
- Warning Sign

LINE PATTERN KEY

- Edge of Asphalt Pavement
- Edge of Concrete Pavement
- Guard Rail Steel
- Flowline
- Street Striping
- Concrete Wall
- Undefined Wall
- Wood Fence
- Hand Rail Steel
- Building
- Chain Link Fence
- Wrought Iron Fence
- Dirt Hinge Point
- Exposed Pipe
- (C/L Construction Per This Survey See Alignment Note Sheet 10)
- (County of Orange Flood Control District Eastment)
- (County Of Orange Right of way)
- Caltrans Easment
- Caltrans Right Of Way
- (City of Laguna Beach Right Of Way)

ABBREVIATION

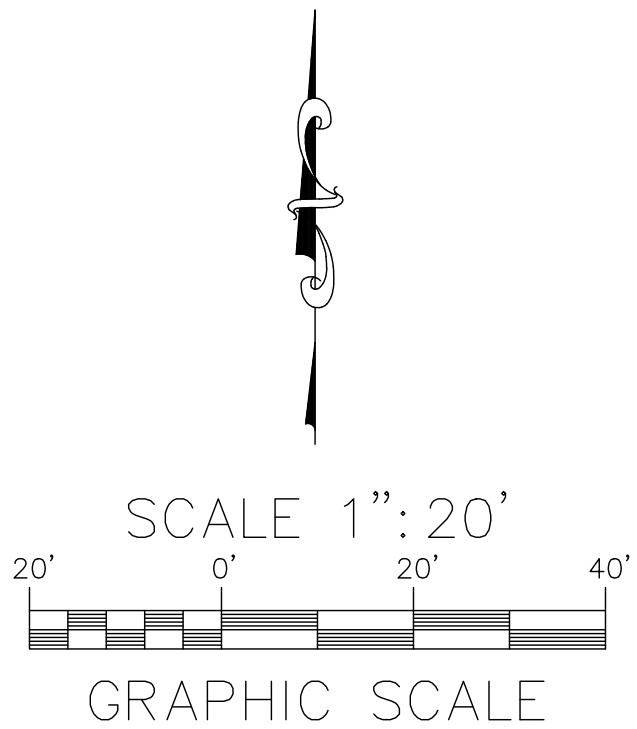
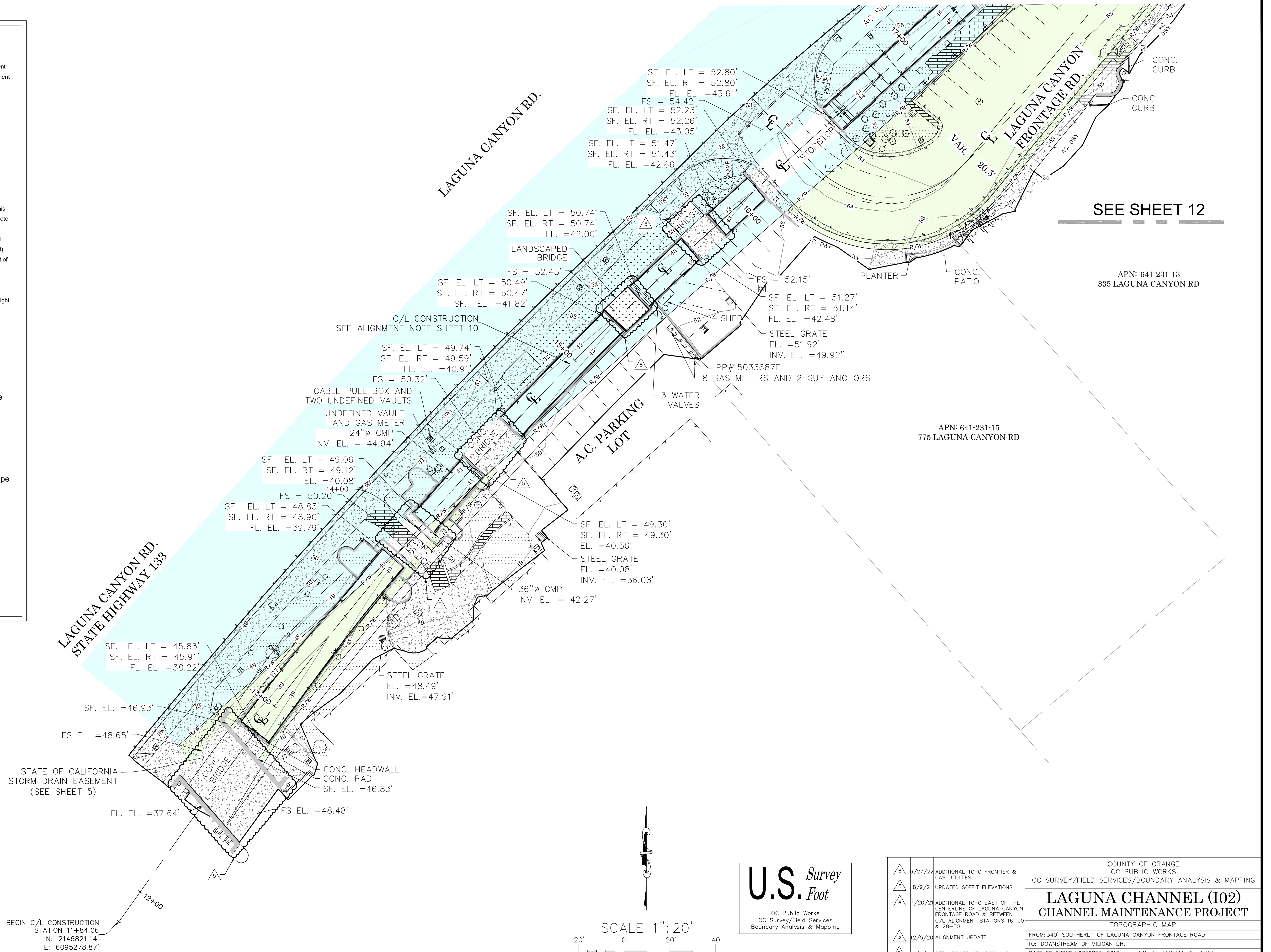
- AC Asphalt Concrete
- BC Beginning of Curve
- CONC Concrete
- CP Control Point
- CMP Corrugated Metal Pipe
- EL Elevation
- EC End of Curve
- FL Flowline
- INV Invert
- SF Soffit
- RCP Reinforce Concrete Pipe
- DWY DRIVEWAY
- LA LANDSCAPE AREA

AREA PATTERN KEY

- Caltrans Right Of Way
- City of Laguna Beach Right Of Way
- County Of Orange Right of way
- O.R. 3688/211 see sheet 7

AREA PATTERN KEY

- Concrete
- Dirt
- Brick



U.S. Survey

OC Public Works
OC Survey/Field Services
Boundary Analysis & Mapping

REVISIONS		COUNTY OF ORANGE OC PUBLIC WORKS OC SURVEY/FIELD SERVICES/BOUNDARY ANALYSIS & MAPPING		SHEET NO. 11 of 14
MARK	DATE	ITEM	FILE: LAGUNA CANYON CHANNEL SEGMENT 1_TOPO_2019.DWG	
△	6/27/22	ADDITIONAL TOPO FRONTIER & GAS UTILITIES		
△	8/9/21	UPDATED SOFFIT ELEVATIONS		
△	1/20/21	ADDITIONAL TOPO EAST OF THE CENTERLINE OF LAGUNA CANYON FRONTAGE ROAD & BETWEEN C/L ALIGNMENT STATIONS 16+00 & 28+50		
△	12/5/20	ALIGNMENT UPDATE		
△	7/2/20	PTR UPDATE AT WOODLAND		
△	1/29/20	TEXT UPDATES		
		DATE OF SURVEY: OCTOBER, 2019	BY: T. LOFGREEN & PARTY	
		TOPOGRAPHIC MAPPING	BY: H. AFTIM / R. BELTRAN	
		OFFICE CHECK	BY: M. KUBISTY, PLS.	
		FIELD CHECK	BY: T. LOFGREEN & PARTY	
		SCALE: 1" = 20' W.O. #EF21286	FILE NO. 1819PW-OP0010	

LEGEND

SYMBOL PATTERN KEY

- 4" Pipe Inlet / Pipe Outlet Unless Otherwise Noted
- Vault - Electrical
- Steel Sign
- Water Meter
- Sewer Manhole
- Single Light Pole
- Water Valve
- Pull box - Electrical
- Fire Hydrant
- Tree
- Storm Drain Manhole
- Vault Undefined
- Steel Grate Inlet
- Telephone Pull Box
- Gas Valve
- TV Cable Control Box
- Catch Basin
- Double Gate
- Sewer Clean Out
- Drop Inlet
- Electric Meter
- Irrigation Pull Box
- Irrigation Valve
- Plastic Electric Outlet Box
- Plastic Yard Light
- Gas Meter
- Undefined Control Box
- Bush
- Double Light Pole
- Electric Manhole
- Undefined Parking Meter
- Rock - Boulder
- Temporary Support Beam For Shoring
- Utility Pole
- Palm Tree
- Mail Box
- Post
- Water Vault
- Guy Anchor
- Telephone Vault
- Sign Board
- Warning Sign

LINE PATTERN KEY

- Edge of Asphalt Pavement
- Edge of Concrete Pavement
- Guard Rail Steel
- Flowline
- Street Striping
- Concrete Wall
- Undefined Wall
- Wood Fence
- Hand Rail Steel
- Building
- Chain Link Fence
- Wrought Iron Fence
- Dirt Hinge Point
- Exposed Pipe
- (C/L Construction Per This Survey See Alignment Note Sheet 10)
- (County of Orange Flood Control District Eastment)
- (County Of Orange Right of way)
- Caltrans Easment
- Caltrans Right Of Way
- (City of Laguna Beach Right Of Way)

ABBREVIATION

- AC Asphalt Concrete
- BC Beginning of Curve
- CONC Concrete
- CP Control Point
- CMP Corrugated Metal Pipe
- EL Elevation
- EC End of Curve
- FL Flowline
- INV Invert
- SF Soffit
- RCP Reinforce Concrete Pipe
- DWY DRIVEWAY
- LA LANDSCAPE AREA

AREA PATTERN KEY

- Caltrans Right Of Way
- City of Laguna Beach Right Of Way
- County Of Orange Right of way
- O.R. 3688/211 see sheet 7

AREA PATTERN KEY

- Concrete
- Dirt
- Brick

SEE SHEET 13

LAGUNA CANYON RD.
STATE HIGHWAY 133

LAGUNA CANYON FRONTAGE RD.

RESIDENTIAL YARD

ONE STORY BUILDING

ONE STORY BUILDING

641-231-08
935 LAGUNA CANYON RD

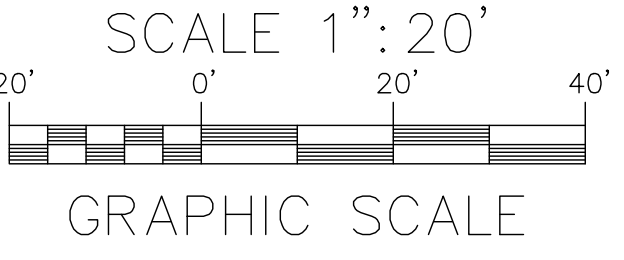
641-231-07
891 LAGUNA CANYON RD

APN: 641-231-13
835 LAGUNA CANYON RD

SEE SHEET 11

U.S. Survey
Foot

OC Public Works
OC Survey/Field Services
Boundary Analysis & Mapping



		COUNTY OF ORANGE OC PUBLIC WORKS OC SURVEY/FIELD SERVICES/BOUNDARY ANALYSIS & MAPPING	
		LAGUNA CHANNEL (I02) CHANNEL MAINTENANCE PROJECT	
		TOPOGRAPHIC MAP	
		FROM: 340' SOUTHERLY OF LAGUNA CANYON FRONTAGE ROAD TO: DOWNSTREAM OF MILIGAN DR.	
6	5/27/22	ADDITIONAL TOPO FRONTIER & GAS UTILITIES	BY: T. LOFGREEN & PARTY
	8/9/21	UPDATED SOFFIT ELEVATIONS	BY: H. AFTIM / R. BELTRAN
3	1/20/21	ADDITIONAL TOPO EAST OF THE CENTERLINE OF LAGUNA CANYON FRONTAGE ROAD & BETWEEN C/L ALIGNMENT STATIONS 16+00 & 28+50	BY: M. KUBISTY, PLS.
	12/5/20	ALIGNMENT UPDATE	BY: T. LOFGREEN & PARTY
2	7/2/20	PTR UPDATE AT WOODLAND	SCALE: 1" = 20' W.O. #EF21286
	1/29/20	TEXT UPDATES	FILE NO. 1819PW-OP0010
1	MARK	DATE	ITEM
	REVISIONS		
		FILE: LAGUNA CANYON CHANNEL SEGMENT 1_TOPO_2019.DWG	

SHEET NO.
12
of
14

LEGEND

SYMBOL PATTERN KEY

- 4" Pipe Inlet / Pipe Outlet Unless Otherwise Noted
- Vault - Electrical
- Steel Sign
- Water Meter
- Sewer Manhole
- Single Light Pole
- Water Valve
- Pull box - Electrical
- Fire Hydrant
- Tree
- Storm Drain Manhole
- Vault Undefined
- Steel Grate Inlet
- Telephone Pull Box
- Gas Valve
- TV Cable Control Box
- Catch Basin
- Double Gate
- Sewer Clean Out
- Drop Inlet
- Electric Meter
- Irrigation Pull Box
- Irrigation Valve
- Plastic Electric Outlet Box
- Plastic Yard Light
- Gas Meter
- Undefined Control Box
- Bush
- Double Light Pole
- Electric Manhole
- Undefined Parking Meter
- Rock - Boulder
- Temporary Support Beam For Shoring
- Utility Pole
- Palm Tree
- Mail Box
- Post
- Water Vault
- Guy Anchor
- Telephone Vault
- Sign Board
- Warning Sign

LINE PATTERN KEY

- Edge of Asphalt Pavement
- Edge of Concrete Pavement
- Guard Rail Steel
- Flowline
- Street Striping
- Concrete Wall
- Undefined Wall
- Wood Fence
- Hand Rail Steel
- Building
- Chain Link Fence
- Wrought Iron Fence
- Dirt Hinge Point
- Exposed Pipe
- (C/L Construction Per This Survey See Alignment Note Sheet 10)
- (County of Orange Flood Control District Eastment)
- (County Of Orange Right of way)
- Caltrans Easment
- Caltrans Right Of Way
- (City of Laguna Beach Right Of Way)

ABBREVIATION

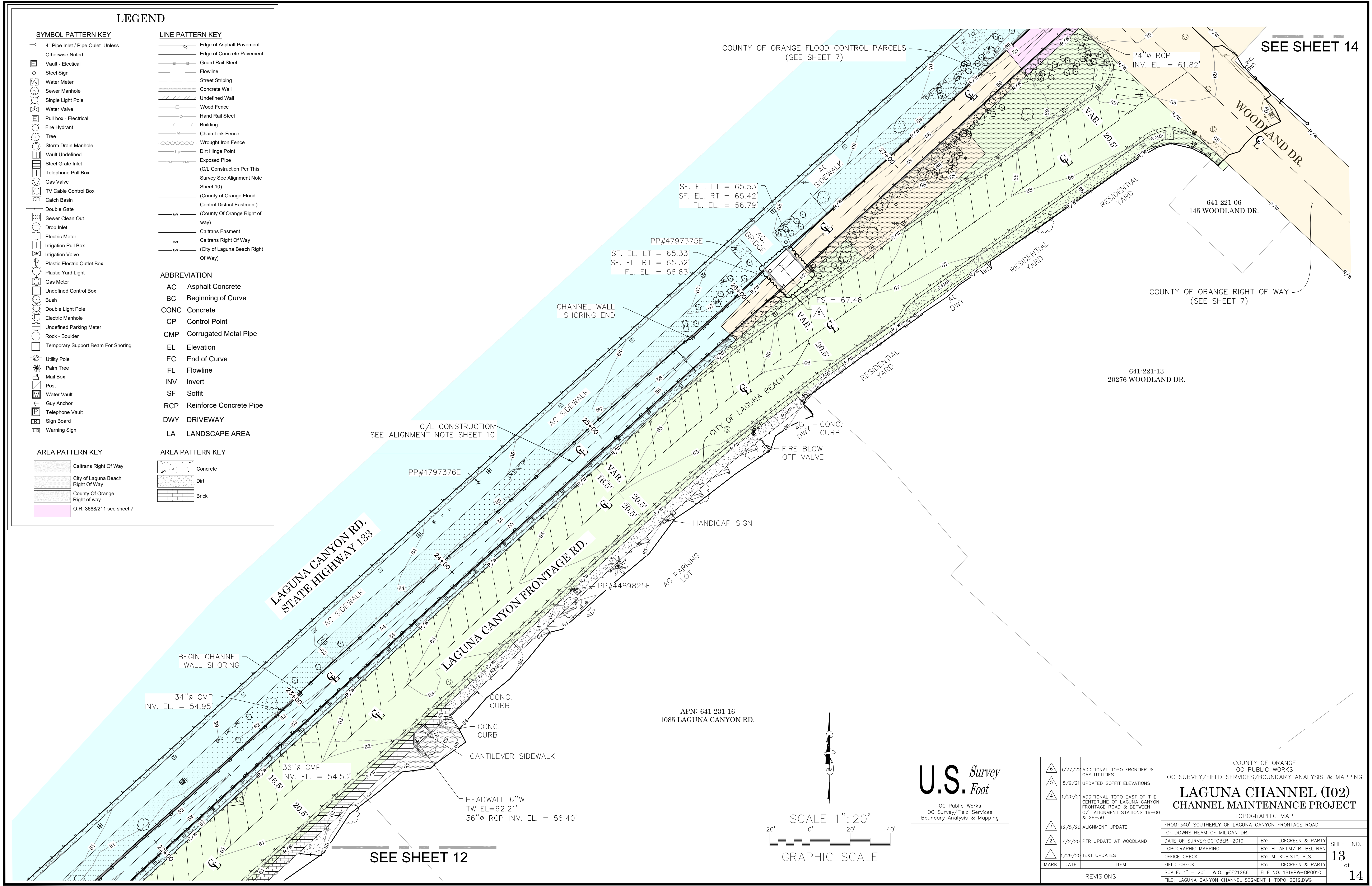
- AC Asphalt Concrete
- BC Beginning of Curve
- CONC Concrete
- CP Control Point
- CMP Corrugated Metal Pipe
- EL Elevation
- EC End of Curve
- FL Flowline
- INV Invert
- SF Soffit
- RCP Reinforce Concrete Pipe
- DWY DRIVEWAY
- LA LANDSCAPE AREA

AREA PATTERN KEY

- Caltrans Right Of Way
- City of Laguna Beach Right Of Way
- County Of Orange Right of way
- O.R. 3688/211 see sheet 7

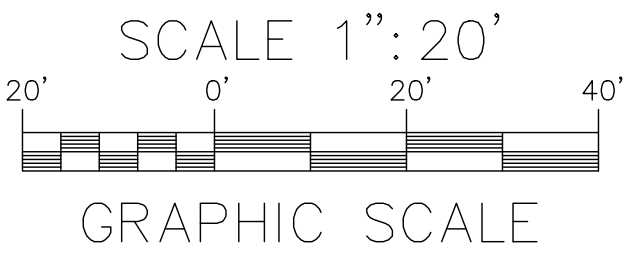
AREA PATTERN KEY

- Concrete
- Dirt
- Brick



SEE SHEET 14

SEE SHEET 12



U.S. Survey
OC Public Works
OC Survey/Field Services
Boundary Analysis & Mapping

6/27/22 ADDITIONAL TOPO FRONTIER & GAS UTILITIES		COUNTY OF ORANGE OC PUBLIC WORKS OC SURVEY/FIELD SERVICES/BOUNDARY ANALYSIS & MAPPING	
8/9/21 UPDATED SOFFIT ELEVATIONS		LAGUNA CHANNEL (I02) CHANNEL MAINTENANCE PROJECT	
1/20/21 ADDITIONAL TOPO EAST OF THE CENTERLINE OF LAGUNA CANYON FRONTAGE ROAD & BETWEEN C/L ALIGNMENT STATIONS 16+00 & 28+50		TOPOGRAPHIC MAP	
12/5/20 ALIGNMENT UPDATE		FROM: 340' SOUTHERLY OF LAGUNA CANYON FRONTAGE ROAD	
7/2/20 PTR UPDATE AT WOODLAND		TO: DOWNSTREAM OF MILIGAN DR.	
1/29/20 TEXT UPDATES		DATE OF SURVEY: OCTOBER, 2019	BY: T. LOFGREEN & PARTY
		TOPOGRAPHIC MAPPING	BY: H. AFTIM / R. BELTRAN
		OFFICE CHECK	BY: M. KUBISTY, PLS.
		FIELD CHECK	BY: T. LOFGREEN & PARTY
		SCALE: 1" = 20' W.O. #F21286	FILE NO. 1819PW-OP0010
		FILE: LAGUNA CANYON CHANNEL SEGMENT 1_TOPO_2019.DWG	
REVISIONS		SHEET NO. 13 of 14	

LEGEND

SYMBOL PATTERN KEY

- 4" Pipe Inlet / Pipe Outlet Unless Otherwise Noted
- Vault - Electrical
- Steel Sign
- Water Meter
- Sewer Manhole
- Single Light Pole
- Water Valve
- Pull box - Electrical
- Fire Hydrant
- Tree
- Storm Drain Manhole
- Vault Undefined
- Steel Grate Inlet
- Telephone Pull Box
- Gas Valve
- TV Cable Control Box
- Catch Basin
- Double Gate
- Sewer Clean Out
- Drop Inlet
- Electric Meter
- Irrigation Pull Box
- Irrigation Valve
- Plastic Electric Outlet Box
- Plastic Yard Light
- Gas Meter
- Undefined Control Box
- Bush
- Double Light Pole
- Electric Manhole
- Undefined Parking Meter
- Rock - Boulder
- Temporary Support Beam For Shoring
- Utility Pole
- Palm Tree
- Mail Box
- Post
- Water Vault
- Guy Anchor
- Telephone Vault
- Sign Board
- Warning Sign

LINE PATTERN KEY

- Edge of Asphalt Pavement
- Edge of Concrete Pavement
- Guard Rail Steel
- Flowline
- Street Striping
- Concrete Wall
- Undefined Wall
- Wood Fence
- Hand Rail Steel
- Building
- Chain Link Fence
- Wrought Iron Fence
- Dirt Hinge Point
- Exposed Pipe
- (C/L Construction Per This Survey See Alignment Note Sheet 10)
- (County of Orange Flood Control District Eastment)
- (County Of Orange Right of way)
- Caltrans Easment
- Caltrans Right Of Way
- (City of Laguna Beach Right Of Way)

ABBREVIATION

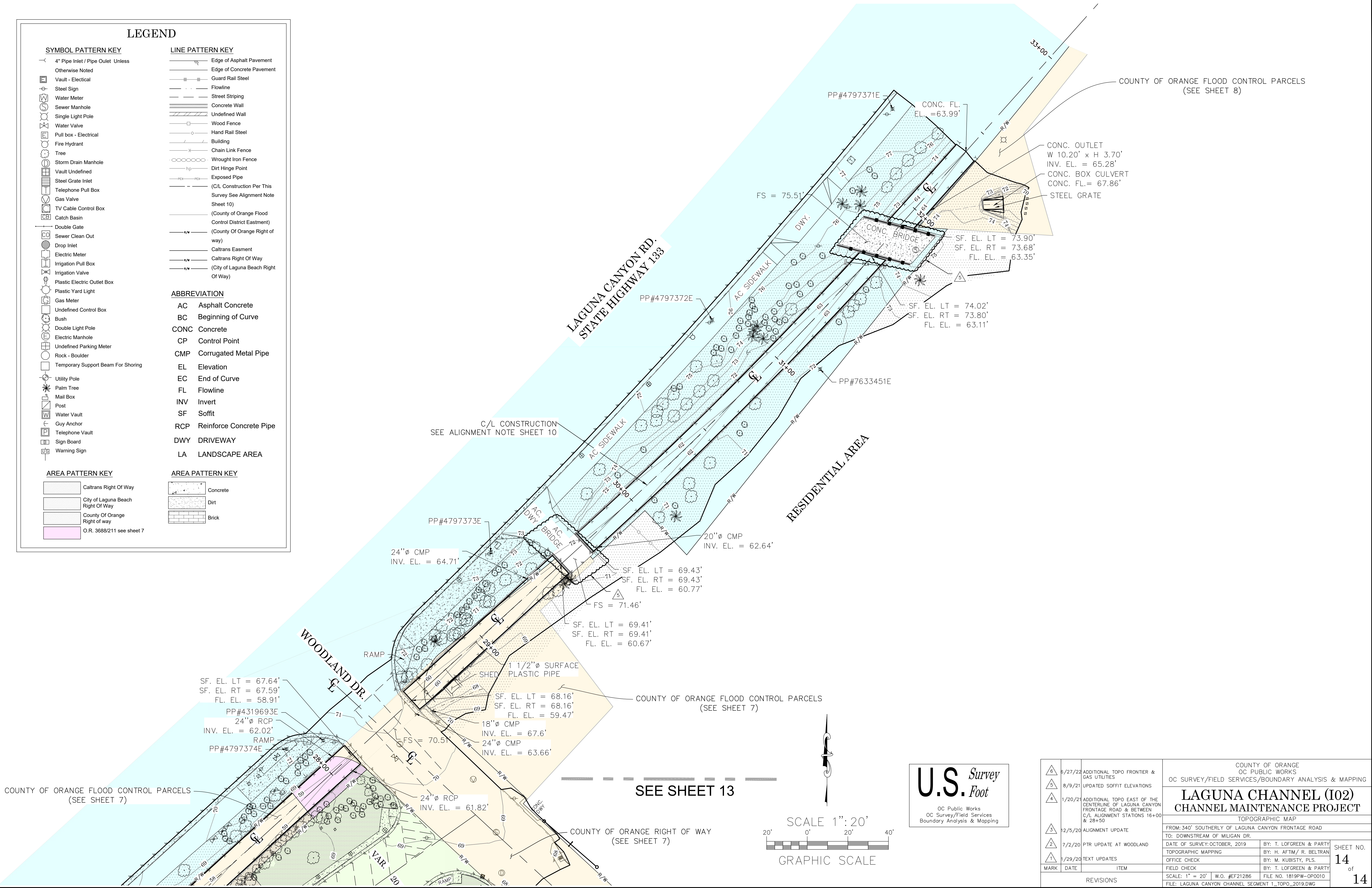
- AC Asphalt Concrete
- BC Beginning of Curve
- CONC Concrete
- CP Control Point
- CMP Corrugated Metal Pipe
- EL Elevation
- EC End of Curve
- FL Flowline
- INV Invert
- SF Soffit
- RCP Reinforce Concrete Pipe
- DWY DRIVEWAY
- LA LANDSCAPE AREA

AREA PATTERN KEY

- Caltrans Right Of Way
- City of Laguna Beach Right Of Way
- County Of Orange Right of way
- O.R. 3688/211 see sheet 7

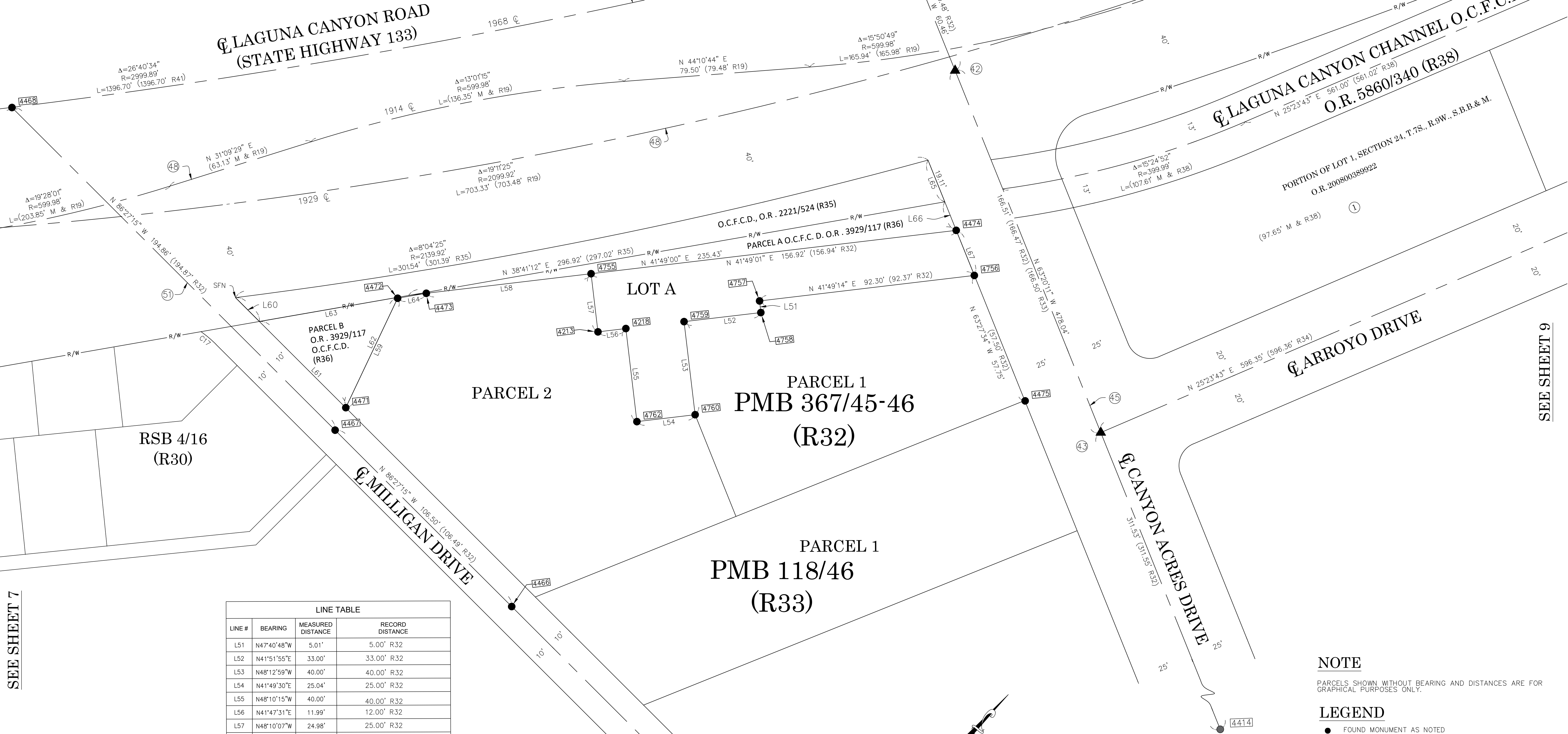
AREA PATTERN KEY

- Concrete
- Dirt
- Brick



LINE TABLE

CL ROADWAY		
SURVEY GEOMETRY		
STATE HIGHWAY RIGHT-OF-WAY	R/W	R/W



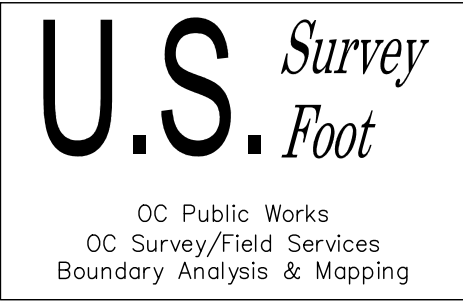
SEE SHEET 7

SEE SHEET 9

LINE TABLE			
LINE #	BEARING	MEASURED DISTANCE	RECORD DISTANCE
L51	N47°40'48"W	5.01'	5.00' R32
L52	N41°51'55"E	33.00'	33.00' R32
L53	N48°12'59"W	40.00'	40.00' R32
L54	N41°49'30"E	25.04'	25.00' R32
L55	N48°10'15"W	40.00'	40.00' R32
L56	N41°47'31"E	11.99'	12.00' R32
L57	N48°10'07"W	24.98'	25.00' R32
L58	N41°48'59"E	70.81'	70.75' R32
L59	N16°03'08"W	51.69'	51.70' R32
L60	N86°27'15"W	14.39'	14.39' R35
L61	S86°27'15"E	52.07'	52.00' R36
L62	N16°03'09"W	52.15'	52.08' R33
L63	N38°41'12"E	60.08'	60.00' R36
L64	N38°48'04"E	12.42'	12.46' R32
L65	N63°20'11"W	19.17'	19.11' R35
L66	N63°20'11"W	13.12'	12.78' R33
L67	N63°20'11"W	20.73'	20.72' R32

NOTE
PARCELS SHOWN WITHOUT BEARING AND DISTANCES ARE FOR GRAPHICAL PURPOSES ONLY.

LEGEND
● FOUND MONUMENT AS NOTED
▲ ESTABLISHED BY TIES SEE ESTABLISHMENT NOTES

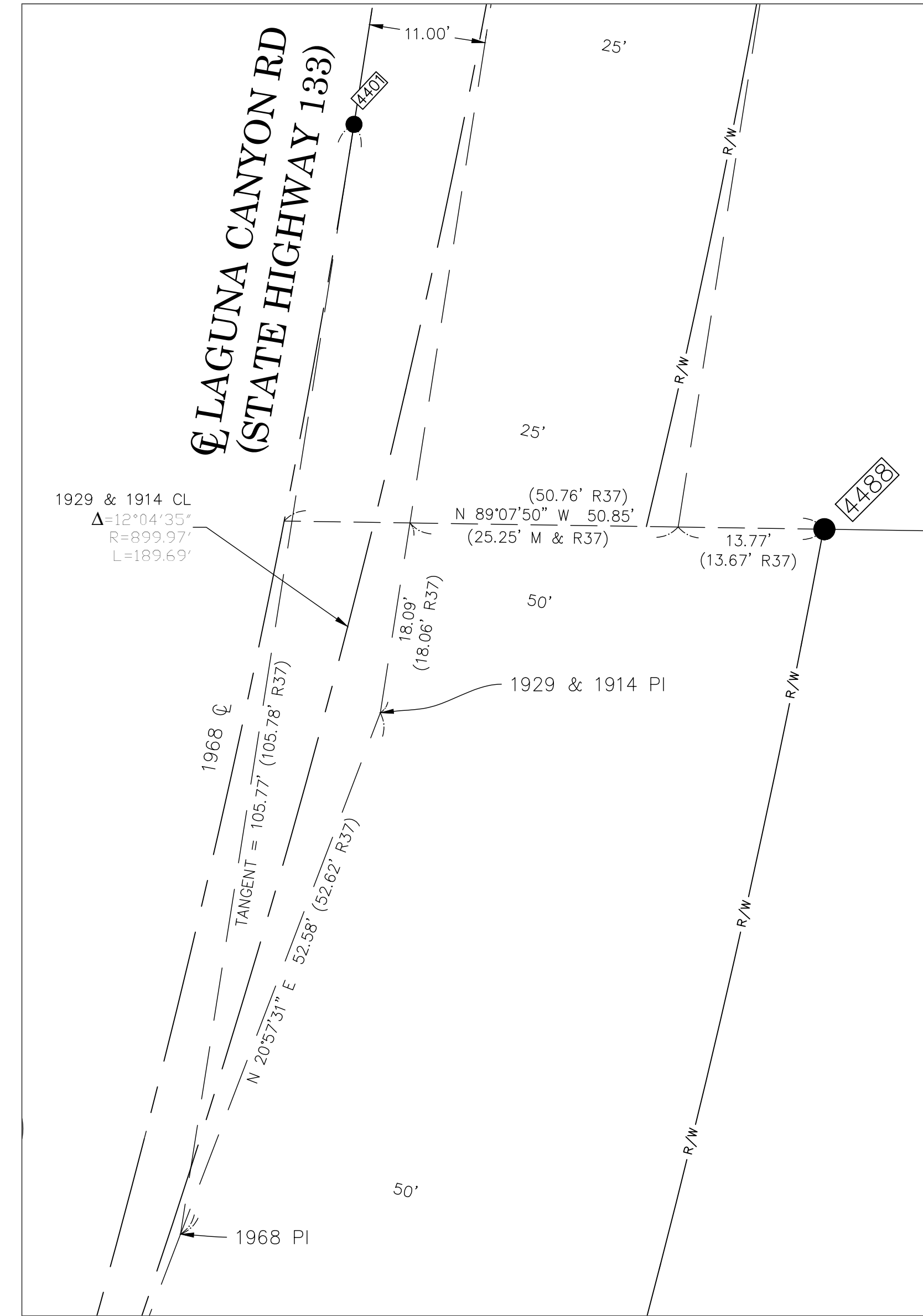


<div>6</div> <div>5</div>	6/27/22	ADDITIONAL TOPO FRONTIER & GAS UTILITIES	COUNTY OF ORANGE OC PUBLIC WORKS		
	8/9/21	UPDATED SOFFIT ELEVATIONS	OC SURVEY/FIELD SERVICES/BOUNDARY ANALYSIS & MAPPING		
<div>4</div>	1/20/21	ADDITIONAL TOPO EAST OF THE CENTERLINE OF LAGUNA CANYON FRONTAGE ROAD & BETWEEN C/L ALIGNMENT STATIONS 16+00 & 28+50	LAGUNA CHANNEL (I02) CHANNEL MAINTENANCE PROJECT		
ALIGNMENT SHEET					
<div>3</div>	12/5/20	ALIGNMENT UPDATE	FROM: FOREST AVE. TO: CANYON ACRES DRIVE		
	7/2/20	PTU UPDATE AT WOODLAND	DATE OF SURVEY: NOV 2019 BY: T. LOFGREEN TOPOGRAPHIC MAPPING BY: T. LOFGREEN / R. BELTRAN		
<div>2</div>	1/29/20	TEXT UPDATES	OFFICE CHECK BY: M. KUBISTY, PLS. FIELD CHECK BY: T. LOFGREEN		
MARK	DATE	ITEM	SCALE: 1"=20' W.O. #EF21286 FILE NO. FILE: LAGUNA_CHANNEL_BOUNDARY_PHASE II_2019.DWG		
REVISIONS					

SHEET NO.
8
of
14

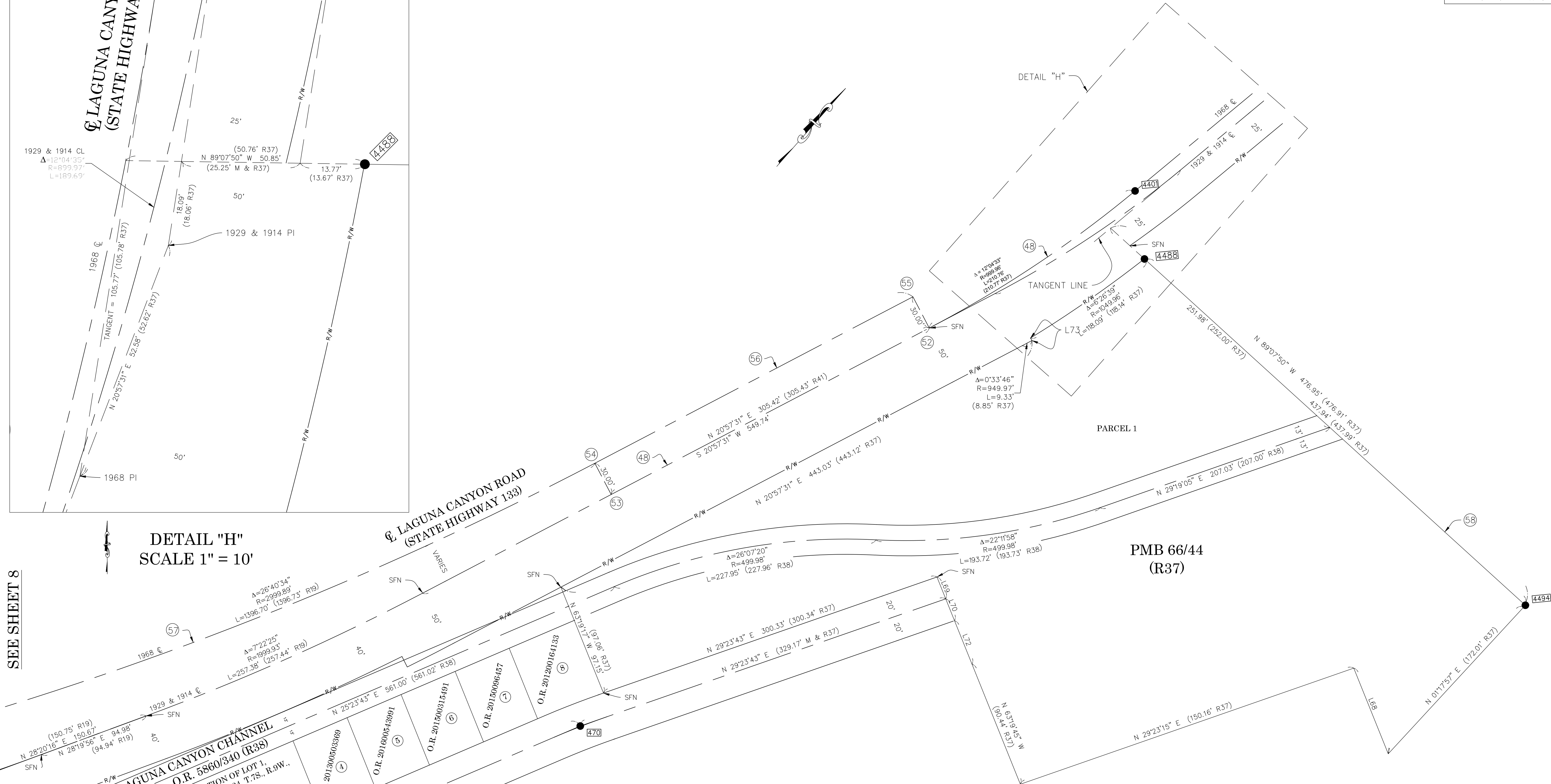
LINE TABLE

CL ROADWAY	
SURVEY GEOMETRY	
STATE HIGHWAY RIGHT-OF-WAY	R/W R/W



DETAIL "H"
SCALE 1" = 10'

SEE SHEET 8



LINE TABLE			
LINE #	BEARING	MEASURED DISTANCE	RECORD DISTANCE
L68	N63°19'48"W	78.57'	78.57' R37
L69	N63°19'45"W	20.02'	20.02' R37
L70	N63°19'45"W	20.02'	20.02' R37
L72	N63°19'45"W	39.93'	39.93' R37
L73	N72°59'27"W	2.45'	2.46' R37

NOTE

PARCELS SHOWN WITHOUT BEARING AND DISTANCES ARE FOR GRAPHICAL PURPOSES ONLY.

LEGEND

- FOUND MONUMENT AS NOTED
- ▲ ESTABLISHED BY TIES SEE ESTABLISHMENT NOTES

6/27/22 8/9/21 1/20/21 12/5/20 7/2/20 1/29/20		ADDITIONAL TOPO FRONTIER & GAS UTILITIES UPDATED SOFFIT ELEVATIONS ADDITIONAL TOPO EAST OF THE CENTERLINE OF LAGUNA CANYON FRONTAGE ROAD & BETWEEN C/L ALIGNMENT STATIONS 16+00 & 28+50 ALIGNMENT UPDATE PTR UPDATE AT WOODLAND TEXT UPDATES	COUNTY OF ORANGE OC PUBLIC WORKS OC SURVEY/FIELD SERVICES/BOUNDARY ANALYSIS & MAPPING LAGUNA CHANNEL (I02) CHANNEL MAINTENANCE PROJECT ALIGNMENT SHEET FROM: FOREST AVE. TO: CANYON ACRES DRIVE DATE OF SURVEY: NOV 2019 TOPOGRAPHIC MAPPING OFFICE CHECK FIELD CHECK SCALE: 1"=40' W.O. #EF21286 FILE: LAGUNA_CHANNEL_BOUNDARY_PHASE_1L_2019.DWG		BY: T. LOFGREEN BY: T. LOFGREEN/ R. BELTRAN BY: M. KUBISTY, PLS. BY: T. LOFGREEN FILE NO.	SHEET NO. 9 of 14
--	--	---	--	--	---	----------------------