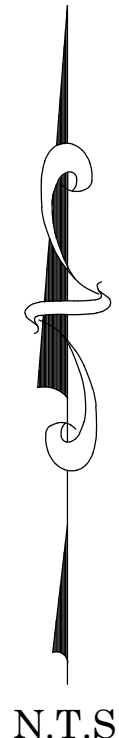




OC PUBLIC WORKS DEPARTMENT
SHANE SILSBY, DIRECTOR
KEVIN HILLS, COUNTY SURVEYOR
LAGUNA CANYON CHANNEL (I02)
CHANNEL MAINTENANCE PROJECT



LOCATION MAP



SENIOR LAND SURVEYOR'S CERTIFICATE:

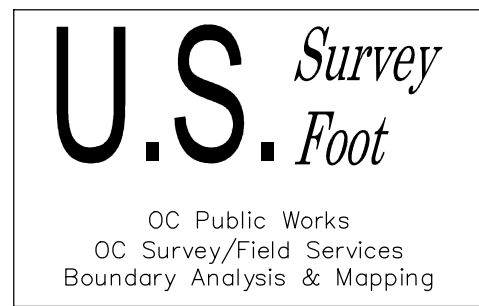
THIS MAP CORRECTLY REPRESENTS A SURVEY MADE BY ME OR UNDER MY DIRECTION IN CONFORMANCE WITH REQUIREMENTS OF THE PROFESSIONAL LAND SURVEYOR'S ACT; THIS 4 DAY OF SEPTEMBER, 2019.

MICHAEL KUBISTY, PLS. SENIOR LAND SURVEYOR

DEPUTY COUNTY SURVEYOR'S STATEMENT:

THIS MAP HAS BEEN EXAMINED IN ACCORDANCE WITH THE PROFESSIONAL LAND SURVEYOR'S ACT; THIS 4 DAY OF SEPTEMBER, 2019.

WADE WEAVER, PLS. DEPUTY COUNTY SURVEYOR



BASIS OF BEARINGS

THE BASIS OF BEARINGS FOR THIS SURVEY IS BASED ON THE CALIFORNIA COORDINATE SYSTEM (CCS83), ZONE VI, NAD 83, OCS (2007.00) EPOCH ADJUSTMENT, AS DETERMINED LOCALLY BY A LINE BETWEEN CONTINUOUS GLOBAL POSITIONING STATIONS CGPS (WHYT) AND (SBCC) BEING NORTH 07°50'54" EAST AS DERIVED FROM THE COORDINATES PUBLISHED BY THE CALIFORNIA SPATIAL REFERENCE CENTER (CSRC) ALONG WITH DATA SHEETS ON FILE IN THE OFFICE OF THE ORANGE COUNTY SURVEYOR.

HORIZONTAL DATUM

COORDINATES SHOWN ARE BASED ON THE CALIFORNIA COORDINATE SYSTEM (CCS83), ZONE VI, NAD 83, OCS 2007.0 EPOCH ADJUSTMENT.

ALL DISTANCES SHOWN ARE GRID, UNLESS OTHERWISE NOTED. TO OBTAIN GROUND DISTANCES DIVIDE GRID BY 0.99998548

ALL DISTANCES ARE BASED ON THE U.S. SURVEY FOOT.

VERTICAL DATUM

O.C.S. BM. 1E-71-69 ELEV. = 197.808' YEAR LEVELED: 1988

NAVD 1988 (O.C.S. 1995 ADJUSTMENT)

DESCRIPTION: FOUND 3 3/4" OCS ALUMINUM BENCHMARK DISK STAMPED "3K-34-70" SET IN THE WESTERLY CORNER OF A 4 FT. BY 9 FT. CONCRETE CATCH BASIN. MONUMENT IS LOCATED ALONG THE SOUTHERLY SIDE OF LAGUNA CANYON ROAD (RTE 133) 0.4 MILES NORTHEASTERLY ALONG (RTE 133) FROM THE CENTERLINE OF PACIFIC COAST HIGHWAY, 39.5 FT. SOUTHWESTERLY OF THE CENTERLINE OF LAGUNA CANYON ROAD AND DIRECTLY ACROSS LAGUNA CANYON ROAD FROM A SIGN READING "HOME OF THE FESTIVAL OF ARTS LAGUNA BEACH" MONUMENT IS SET LEVEL WITH THE SIDEWALK.

NOTES

THE SURVEY INFORMATION SHOWN HEREON IS TO BE USED FOR TOPOGRAPHIC RELATIONSHIPS ONLY AND IS NOT INTENDED FOR LAND ACQUISITION OR BOUNDARY PURPOSES.

PARCELS SHOWN WITHOUT BEARING AND DISTANCES ARE FOR GRAPHICAL PURPOSES AND ARE PENDING RECEIPT OF TITLE REPORT.

SHEET INDEX

SHEET	NO.	DESCRIPTION
SHEET	1	TITLE SHEET
SHEET	2-4	ALIGNMENT SHEET
SHEETS	5	TOPOGRAPHIC MAP

BASIS OF STATIONING

THE BASIS FOR STATIONING IS STA 0+00 PER RECORD PLAN I02-101-2-A DATED NOV. 1951 REVISION DATE AUG. 2008 HELD AT THE MOST SOUTHERLY STRUCTURE SHOWN HEREIN.

PURPOSE OF SURVEY

THE PURPOSE OF THE SURVEY IS TO PROVIDE A TOPOGRAPHIC MAP AND RIGHT OF WAY ESTABLISHMENT FOR THIS PORTION OF THE LAGUNA CHANNEL (I 01).

TOPOGRAPHIC MAPPING PROJECT

COUNTY OF ORANGE OC PUBLIC WORKS OC SURVEY/FIELD SERVICES/BOUNDARY ANALYSIS & MAPPING			
LAGUNA CANYON CHANNEL (I02) CHANNEL MAINTENANCE PROJECT			
TITLE SHEET			
FROM: FOREST AVE			
TO: 200' NORTH EASTERLY OF FOREST AVE			
DATE OF SURVEY: JUNE, 2019	BY: S. STROM & PARTY	SHEET NO. 1 of 5	
TOPOGRAPHIC MAPPING	BY: H. AFTM		
OFFICE CHECK	BY: M. KUBISTY, PLS.		
FIELD CHECK	BY: S. STROM & PARTY		
SCALE: NTS	W.O. #EF21286		
REVISIONS		FILE NO.	
FILE: LAGUNA CANYON CHANNEL_TOPO_2019.DWG			

ESTABLISHMENT NOTES:

- 1
- CENTERLINE OF OCEAN AVE ESTABLISHED BETWEEN MONUMENT NOTE 419 & ESTABLISHMENT NOTE 2
- 2
- S.F.N., ESTABLISHED THE INTERSECTION OF OCEAN AVENUE & FOREST AVENUE BY THE NE'LY PROLONGATION OF A LINE BETWEEN MONUMENT NOTE 419 & ESTABLISHMENT NOTE 3 & AT RECORD DISTANCE NW'LY PER R1 FROM ACCEPTED MONUMENT 563. FITS RECORD DISTANCE BETWEEN MONUMENT NOTE 419 & ESTABLISHMENT NOTE 2 PER R1.
- 3
- CENTERLINE OF FOREST AVE ESTABLISHED BETWEEN MONUMENT NOTE 563 & ESTABLISHMENT NOTE 2
- 4
- S.F.N. ESTABLISHED BY PROPORTION BETWEEN MONUMENT NOTES 622 & 403
- 5
- CENTERLINE BROADWAY ESTABLISHED BETWEEN MONUMENT NOTE 622 & MONUMENT NOTE 403
- 6
- CENTERLINE BROADWAY ESTABLISHED HOLDING RECORD DIMENSIONS FROM TRAVERSE LINE PER R9 BETWEEN MONUMENT NOTE 403 & ESTABLISHMENT NOTE 7
- 7
- SFN. ESTABLISHED BY INTERSECTION HOLDING RECORD ANGLE N'ELY FROM MONUMENT NOTE 403 PER R7 & THE N'WLY PROLONGATION OF A LINE BETWEEN MONUMENT NOTES 541 & 752 FITS RECORD DISTANCE BETWEEN MONUMENT NOTE 403 & ESTABLISHMENT NOTE 7 PER R2
- 8
- CENTERLINE OF FOREST AVE ESTABLISHED BETWEEN ESTABLISHMENT NOTES 2 & 7
- 9
- CENTERLINE OF FOREST AVE ESTABLISHED BETWEEN ESTABLISHMENT NOTES 2 & 10
- 10
- S.F.N. ESTABLISHED BY INTERSECTION FROM THE N'WLY PROLONGATION OF A LINE BETWEEN MONUMENT NOTES 563 & ESTABLISHMENT NOTE 2 & THE S'ELY PROLONGATION OF A LINE BETWEEN MONUMENT NOTES 752 & 541 FITS RECORD DISTANCE BETWEEN ESTABLISHMENT NOTES 2 & 10 PER R2.
- 11
- S'WLY RIGHT OF WAY OF FOREST AVE ESTABLISHED PER LOT LINE ADJUSTMENT O.R. 199500424662.
- 12
- CENTERLINE OF FOREST AVE ESTABLISHED BETWEEN ESTABLISHMENT NOTE 2 & 7
- 13
- ESTABLISHED HOLDING RECORD DISTANCE PER R5 N'WLY ALONG THE CENTERLINE OF FOREST AVE BETWEEN ESTABLISHMENT NOTES 35 & 7
- 14
- ESTABLISHED S'ELY PROLONGATION OF R5 BETWEEN ESTABLISHMENT NOTES 13 & 15 ALSO BEING THE S'ELY LINE OF O.R. 567 PG 157 OF DEEDS.
- 15
- ESTABLISHED AS THE P.O.B. FOR R5 BY HOLDING RECORD DISTANCE & ANGLE PER R5 FROM ESTABLISHMENT NOTE 13
- 16
- ESTABLISHED THE INTERSECTION OF THE N'ELY RIGHT OF WAY FOREST AVE & THE CENTERLINE OF THE LAGUNA CANYON CHANNEL (I02) BY HOLDING RECORD DISTANCE PER R8 N'WLY ALONG THE N'ELY RIGHT OF WAY OF SAID FOREST AVE FROM ESTABLISHMENT NOTE 15 POSITION IS ALSO THE P.O.B. FOR SAID R8
- 17
- ESTABLISHED THE B.C. OF THE CENTERLINE OF THE LAGUNA CANYON CHANNEL (I02) BY RECORD ANGLE & DISTANCE FROM ESTABLISHMENT NOTE 16 PER R8.
- 18
- CENTERLINE OF THE LAGUNA CHANNEL (I02) ESTABLISHED BY HOLDING RECORD DATA BETWEEN ESTABLISHMENT NOTES 16 & 19 PER R8.
- 19
- ESTABLISHED BY RECORD ANGLE PER R7 & RECORD DISTANCE PER R17 FROM ESTABLISHMENT NOTE 20
- 20
- ESTABLISHED BY RECORD ANGLE & DISTANCE FROM ESTABLISHMENT NOTE 21 PER R7.
- 21
- ESTABLISHED AT RECORD DISTANCE PER R7 N'LY ALONG THE E'LY RIGHT OF WAY OF LAGUNA CANYON ROAD FROM ESTABLISHMENT NOTE 22
- 22
- ESTABLISHED POINT IN E'LY RIGHT OF WAY OF THE LAGUNA CANYON ROAD 1914 ALIGNMENT PERPENDICULAR TO & AT RECORD DISTANCE PER R7 FROM ESTABLISHMENT NOTE 23
- 23
- ESTABLISHED AT RECORD DISTANCE N'ELY ALONG THE CENTERLINE OF LAGUNA CANYON ROAD BETWEEN ESTABLISHMENT NOTES 29 & 30 PER R7.
- 24
- S.F.N. ESTABLISHED CENTERLINE B.C. OF LAGUNA CANYON ROAD 1968 ALIGNMENT BY TIES PER R15.
- 25
- S.F.N. ESTABLISHED CENTERLINE E.C. OF LAGUNA CANYON ROAD 1968 ALIGNMENT BY TIES PER R15.
- 26
- S.F.N. ESTABLISHED P.I. OF LAGUNA CANYON ROAD 1968 ALIGNMENT BY TIES PER R15
- 27
- S.F.N. ESTABLISHED P.I. OF LAGUNA CANYON ROAD 1968 ALIGNMENT BY LEAST SQUARES ADJUSTMENT BETWEEN ESTABLISHMENT NOTES 7 & 24 DID NOT ACCEPT TIES PER R15.
- 28
- ESTABLISHED BY RECORD DISTANCE PER R2 N'WLY FROM ESTABLISHMENT NOTE 7
- 29
- ESTABLISHED P.I. OF THE CENTERLINE OF LAGUNA CANYON ROAD 1914 ALIGNMENT BY HOLDING RECORD OFFSET DIMENSIONS PARALLEL TO & PERPENDICULAR WITH THE 1968 CENTERLINE ALIGNMENT PER R2, R16, & R18.
- 30
- ESTABLISHED P.I. OF THE CENTERLINE OF LAGUNA CANYON ROAD 1914 ALIGNMENT BY HOLDING RECORD DISTANCE PER R7 & OFFSET DIMENSIONS PARALLEL TO & PERPENDICULAR WITH THE 1968 CENTERLINE ALIGNMENT PER R16 & R18.
- 31
- CENTERLINE OF LAGUNA CANYON ROAD 1914 ALIGNMENT ESTABLISHED BY HOLDING RECORD OFFSET DIMENSIONS PARALLEL TO & PERPENDICULAR WITH THE 1968 CENTERLINE ALIGNMENT PER R2.
- 32
- CENTERLINE OF LAGUNA CANYON ROAD 1968 ALIGNMENT ESTABLISHED BETWEEN ESTABLISHMENT NOTES 7 27 24 29 26 & MONUMENT NOTE 452
- 33
- ESTABLISHED POINT IN THE CENTERLINE OF OCEAN AVENUE AT 29.00' FROM ACCEPTED MONUMENT 431 AT A RIGHT ANGLE FROM ACCEPTED MONUMENT 428
- 34
- ESTABLISHED THE CENTERLINE OF OCEAN AVENUE BETWEEN ACCEPTED MONUMENT 419 & ESTABLISHMENT NOTE 33
- 35
- ESTABLISHED THE INTERSECTION OF CENTERLINE TANGENTS OF FOREST AVENUE (THIRD STREET) & OCEAN AVENUE PER R5.

MONUMENT NOTES

- 403
- FOUND PUNCHED SPIKE & WASHER STAMPED " CALTRANS," PER R3, DOWN 0.2' IN A.C. ACCEPTED AS CENTERLINE INTERSECTION OF BROADWAY & TRAVERSE LINE SHOWN ON R2.
- 419
- FOUND PUNCHED SPIKE & WASHER PER R2 DOWN 0.2' IN A.C. ILLEGIBLE, ACCEPTED AS CENTERLINE INTERSECTION OF BEACH STREET & OCEAN AVE.
- 425
- FOUND 3/4 " I.P. PER R1, HOLLOW, FLUSH IN DIRT LEANING N'WLY. N59°15'00"W 0.09' NOT ACCEPTED AS POINT ON N'WLY RIGHT OF WAY OCEAN AVE.
- 426
- FOUND 3/4 " I.P. PER R1, HOLLOW, FLUSH IN DIRT LEANING N'WLY. N59°15'00"W 0.18' NOT ACCEPTED AS POINT ON N'WLY RIGHT OF WAY OCEAN AVE.
- 427
- FOUND 1" I.P. WITH TAG STAMPED "RE 2708" PER R1 ACCEPTED AS POINT ON N'WLY RIGHT OF WAY OCEAN AVE.
- 428
- FOUND LEAD & 3/4" BRASS TAG STAMPED "RCE 28328" PER R1, FLUSH IN CONCRETE, ACCEPTED AS 1.00' OFFSET TO THE N'WLY RIGHT OF WAY OF OCEAN AVE.
- 431
- FOUND LEAD & 3/4" BRASS TAG PER R1, FLUSH IN CONCRETE, STAMPED " RCE 28328" ACCEPTED AS 1.00' OFFSET TO THE N'WLY RIGHT OF WAY OF OCEAN AVE.
- 432
- FOUND LEAD & 1 1/4" BRASS TAG STAMPED "BC RW 4--92, PER R1, FLUSH IN CONCRETE, ACCEPTED AS B.C. IN S'WLY RIGHT OF WAY FOREST AVE.
- 434
- FOUND MAG. NAIL & WASHER STAMPED "ORANGE COUNTY SURVEYOR" PER R2 FLUSH IN A.C., N25°35'05"E 1.65' FROM CENTERLINE INTERSECTION OCEAN AVE. & FOREST AVE.
- 444
- FOUND LEAD & 3/4" BRASS TAG STAMPED "LS 3064" PER R7, FLUSH IN CONCRETE N62°18'25"W 0.48' NOT ACCEPTED AS CORNER "L" OF PARCEL 4 OF R7.
- 445
- FOUND 1" BRASS TAG STAMPED "LS 1444" PER R7, FLUSH IN CONCRETE, ACCEPTED AS CORNER "H" OF PARCEL 4 OF R7.
- 446
- FOUND 1 1/2" I.P. HOLLOW PER R7, FLUSH IN DIRT, ACCEPTED AS W'LY CORNER OF PARCEL 4 OF R7.
- 448
- FOUND 1" I.P., WITH TAG STAMPED " LS 4139", PER R7, FLUSH IN DIRT, ACCEPTED AS THE NW CORNER OF PARCEL 4 OF R7.
- 449
- FOUND LEAD AND TACK PER R14 FLUSH IN CONCRETE ACCEPTED AS THE B.C. OF THE SOUTHWESTERLY RIGHT OF WAY OF LAGUNA CANYON FRONTAGE ROAD.
- 452
- FOUND 2" I.P. WITH NAIL PER R9, FLUSH IN DIRT, ACCEPTED AS E.C. OF THE 1968 CENTERLINE ALIGNMENT OF LAGUNA CANYON ROAD.
- 541
- FOUND SPIKE & WASHER STAMPED O.C.S., PER R2, DOWN 0.2' IN A.C., ACCEPTED AS CENTERLINE INTERSECTION OF FOREST AVE., & THE N'ELY PROLONGATION OF THE CENTERLINE OF THE S'WLY PORTION OF THE LAGUNA CANYON CHANNEL (I02).
- 551
- FOUND ROUND HEAD SPIKE & WASHER, ILLEGIBLE, NO REFERENCE, FLUSH IN A.C N08°27'49"E 0.46' FROM CENTERLINE P.I. OF FOREST AVE.
- 560
- FOUND GEAR SPIKE & WASHER STAMPED "KDM MERIDIAN, PLS 7564" PER R6, ACCEPTED AS THE CENTERLINE INTERSECTION OF FOREST AVE & LOMA PLACE.
- 563
- FOUND GEAR SPIKE & WASHER STAMPED "PLS 7564" PER R6 & R1, ACCEPTED AS CENTERLINE P.I. OF FOREST AVE.
- 622
- FOUND LEAD & 1 1/4" BRASS TAG PER R2, ILLEGIBLE, FLUSH IN TOP OF CURB, ACCEPTED AS CENTERLINE PROD. OF BROADWAY.
- 752
- FOUND SPIKE & WASHER STAMPED O.C.S., PER R2, DOWN 0.2' IN A.C.,ACCEPTED AS THE INTERSECTION OF FOREST AVE., & THE N'ELY PROLONGATION OF THE S'ELY LINE OF LOTS 8 & 9, BLK-4 OF M.M 4/58-59, & THE S'ELY LINE OF BLK-E OF TRACT 208, MM 22-18, & ALSO BOUNDARY LINE PER BOOK 95-338 OF DEEDS, AS SHOWN BY R2.
- 548
- FOUND 1" I.P. WITH TAG ILLEGIBLE UNDER BRICK SIDEWALK ACCEPTED AS THE E.C. IN THE WESTERLY R/W OF FOREST AVENUE.

REFERENCES

- (R1) = RECORD OF SURVEY RSB 305/30
- (R2) = RECORD OF SURVEY RSB 138/1-8
- (R3) = RECORD OF SURVEY RSB 291/13-14
- (R4) = PARCEL MAP PM 66/15
- (R5) = OFFICIAL RECORD 1074/179
- (R6) = CORNER RECORD 2007-1482
- (R7) = RECORD OF SURVEY RSB 232/42-43
- (R8) = OFFICIAL RECORD 2304/195
- (R9) = RECORD OF SURVEY 119/22-23
- (R10) = OFFICIAL RECORD 1055/250
- (R11) = COUNTY SURVEYOR TIE BOOK 1-46-27A-27B
- (R12) = OFFICIAL RECORD 440/192
- (R13) = OFFICIAL RECORD 2243/119
- (R14) = RECORD OF SURVEY 114/10
- (R15) = CALTRANS CL TIES SR-73-008
- (R16) = CALTRANS SURVEY CONTROL MAP 001746-SM0583
- (R17) = OFFICIAL RECORD 6875/114
- (R18) = CALTRANS ALIGNMENT NOTES A269-001_013-020

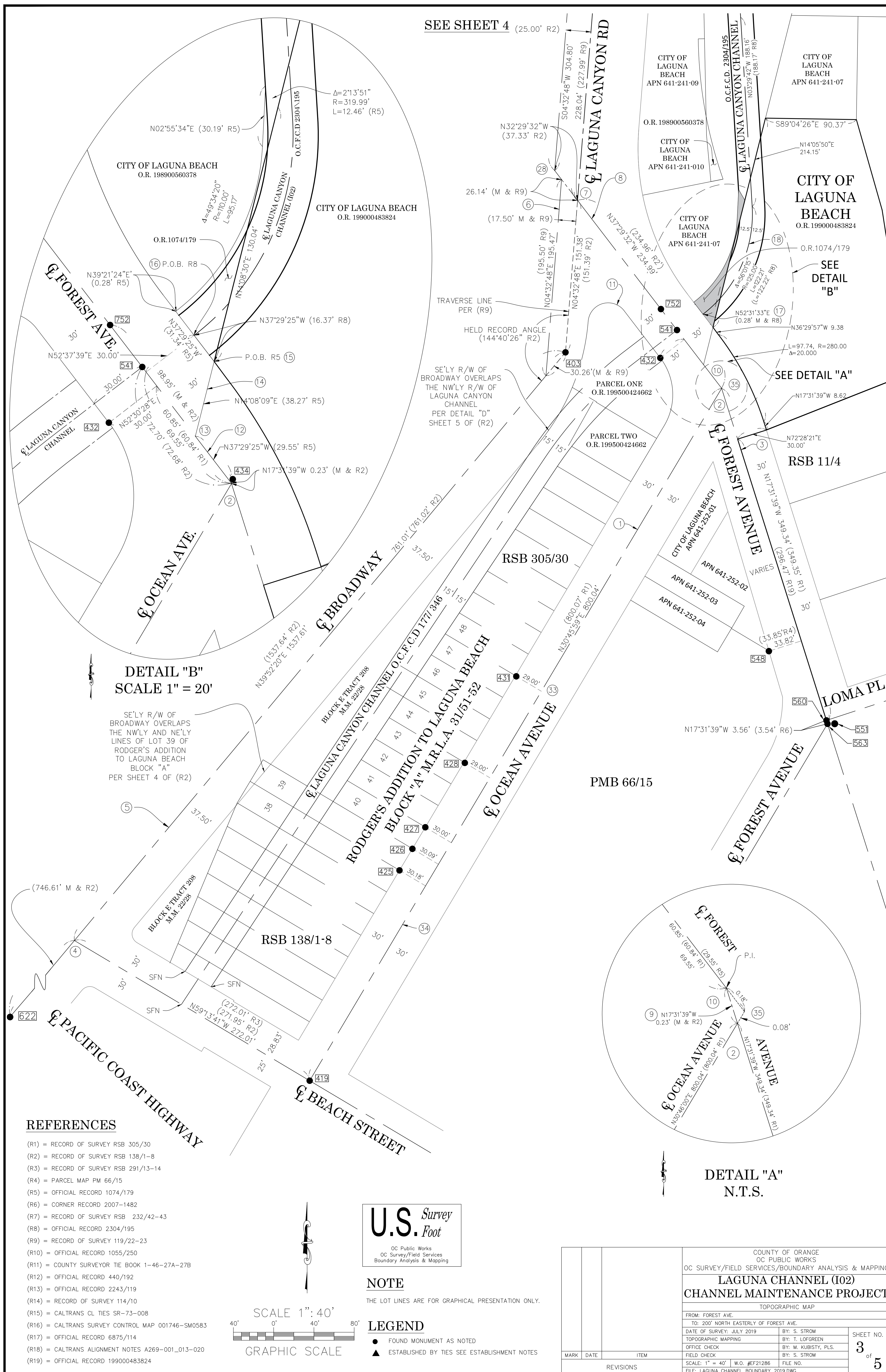
NOTE

THE LOT LINES ARE FOR GRAPHICAL PRESENTATION ONLY.

LEGEND

- FOUND MONUMENT AS NOTED
- ▲ ESTABLISHED BY TIES SEE ESTABLISHMENT NOTES

			COUNTY OF ORANGE OC PUBLIC WORKS OC SURVEY/FIELD SERVICES/BOUNDARY ANALYSIS & MAPPING		
			LAGUNA CHANNEL (I02) CHANNEL MAINTENANCE PROJECT		
			TOPOGRAPHIC MAP		
			FROM: FOREST AVE.		
			TO: 200' NORTH EASTERLY OF FOREST AVE.		
			DATE OF SURVEY: JULY 2019	BY: S. STROM	SHEET NO. <div>2</div> of <div>5</div>
			TOPOGRAPHIC MAPPING	BY: T. LOFGREEN	
MARK	DATE	ITEM	OFFICE CHECK	BY: M. KUBISTY, PLS.	
REVISIONS			FIELD CHECK	BY: S. STROM	
			SCALE: 1" = 40'	W.G. #EF21286	FILE NO.
			FILE: LAGUNA_CHANNEL_BOUNDARY_2019.DWG		



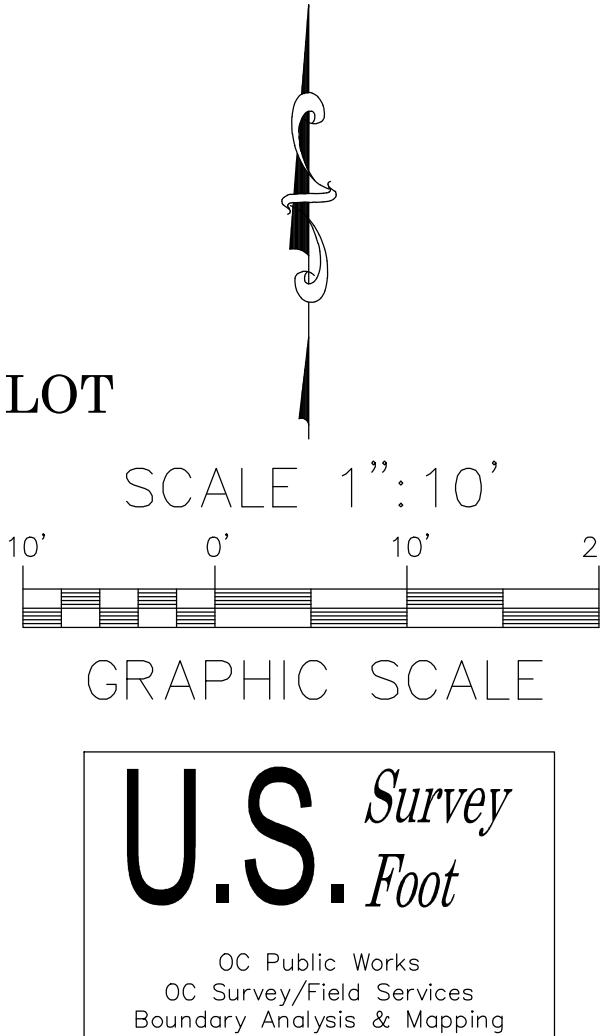
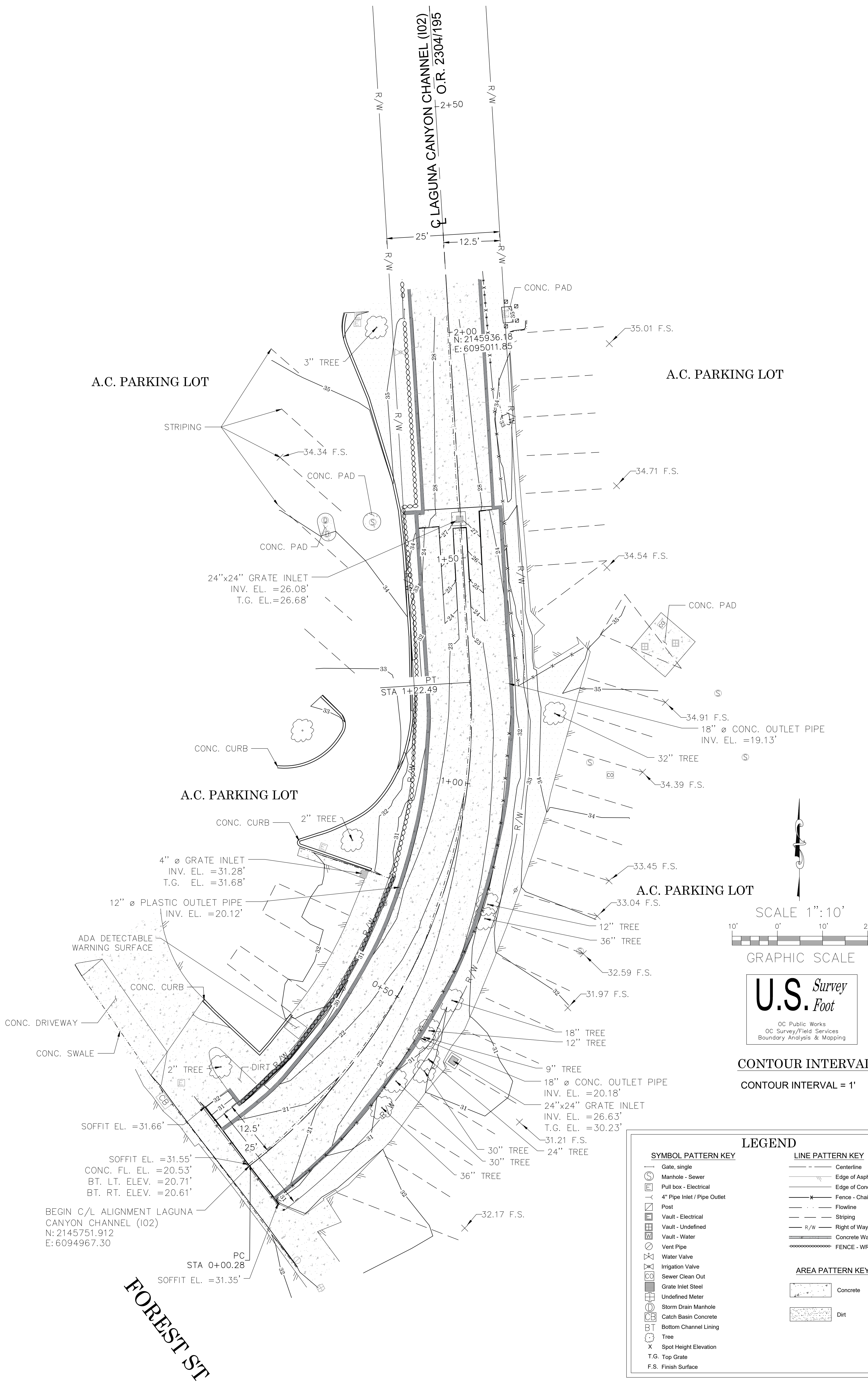


- ## NOTE

LEGEND

- FOUND MONUMENT AS NOTED
▲ ESTABLISHED BY TIES SEE ESTABLISHMENT NOTES

			COUNTY OF ORANGE OC PUBLIC WORKS OC SURVEY/FIELD SERVICES/BOUNDARY ANALYSIS & MAPPING					
LAGUNA CHANNEL (I02) CHANNEL MAINTENANCE PROJECT								
ALIGNMENT SHEET								
FROM: FOREST AVE.								
TO: 200' NORTH EASTERLY OF FOREST AVE.								
DATE OF SURVEY: JULY 2019						BY: S. STROM		SHEET NO. 4 of 5
TOPOGRAPHIC MAPPING						BY: T. LOFGREEN		
OFFICE CHECK						BY: M. KUBISTY, PLS.		
FIELD CHECK						BY: S. STROM		
MARK	DATE	ITEM		SCALE: 1" = 40'		W.O. #EF21286		FILE NO.
REVISIONS				FILE: LAGUNA_CHANNEL_BOUNDARY_2019.DWG				



CONTOUR INTERVALS
CONTOUR INTERVAL = 1'

LEGEND		
SYMBOL PATTERN KEY	LINE PATTERN KEY	
Gate, single	Centerline	
Manhole - Sewer	Edge of Asphalt Pavement	
Pull box - Electrical	Edge of Concrete Pavement	
4" Pipe Inlet / Pipe Outlet	Fence - Chain Link	
Post	Flowline	
Vault - Electrical	Striping	
Vault - Undefined	Right of Way	
Vault - Water	Concrete Wall	
Vent Pipe	FENCE - WROUGHT IRON	
Water Valve		
Irrigation Valve		
Sewer Clean Out		
Grate Inlet Steel		
Undefined Meter		
Storm Drain Manhole		
Catch Basin Concrete		
Bottom Channel Lining		
Tree		
Spot Height Elevation		
T.G. Top Grate		
F.S. Finish Surface		
	<th>AREA PATTERN KEY</th>	AREA PATTERN KEY
	Concrete	
	Dirt	

BEGIN C/L ALIGNMENT LAGUNA CANYON CHANNEL (I02)
N: 2145751.912
E: 6094967.30

FOREST ST

		COUNTY OF ORANGE OC PUBLIC WORKS OC SURVEY/FIELD SERVICES/BOUNDARY ANALYSIS & MAPPING	
		LAGUNA CHANNEL (I02) CHANNEL MAINTENANCE PROJECT	
		TOPOGRAPHIC MAP	
		FROM: FOREST AVE	
		TO: 200' NORTH EASTERLY OF FOREST AVE	
		DATE OF SURVEY: JUNE, 2019	BY: S. STROM & PARTY
		TOPOGRAPHIC MAPPING	BY: H. AFTM
		OFFICE CHECK	BY: M. KUBISTY, PLS.
		FIELD CHECK	BY: S. STROM & PARTY
		SCALE: 1" = 10'	W.O. #EF21286
		FILE NO.	
		FILE: LAGUNA_CANYON_CHANNEL_TOPO_2019.DWG	
MARK	DATE	ITEM	
REVISIONS			