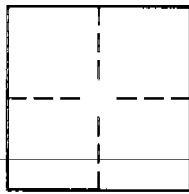


CORNER RECORD

Document Number 2002-534
City of UNINCORPORATED TERRITORY County of ORANGE, California
Brief Legal Description TRACT 15622, M.M. 784/47-50



CORNER TYPE

Government corner ☐ Control ☐
Meander ☐ Property ☐
Rancho ☐ Other ☒
Date of Survey SEP. 2001

COORDINATES (OPTIONAL)

N. _____
E. _____
Zone _____ NAD27 ☐ NAD83 ☐
NAD83 Epoch _____
Elev. _____
Vert. Datum: ☐ NGVD29 ☐ NAVD88 ☐
Meas. Units: ☐ Metric ☐ Imperial ☐

Corner— Left as found ☐ Found and tagged ☐ Established ☒ Reestablished ☐ Rebuilt ☐

Identification and type of corner found: Evidence used to identify or procedure used to establish or reestablish the corner:

SEE PAGE 2

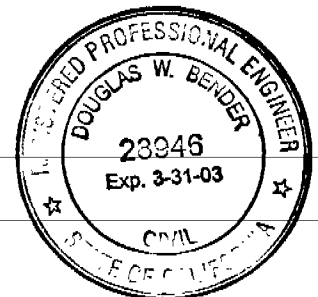
A description of the physical condition of the monument as found and as set or reset:

SEE PAGE 2

SURVEYOR'S STATEMENT

This Corner Record was prepared by me or under my direction in conformance with
the Land Surveyors' Act on 3/22/02

Signed [Signature] P.L.S. or R.C.E. Number 28946



COUNTY SURVEYOR'S STATEMENT

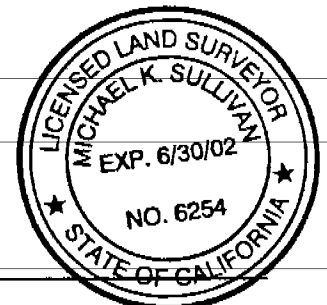
APR 11 2002

This Corner Record was received _____
and examined and filed MAY 15 2002

Signed [Signature] P.L.S. or R.C.E. Number 6254

Title DEPUTY COUNTY SURVEYOR

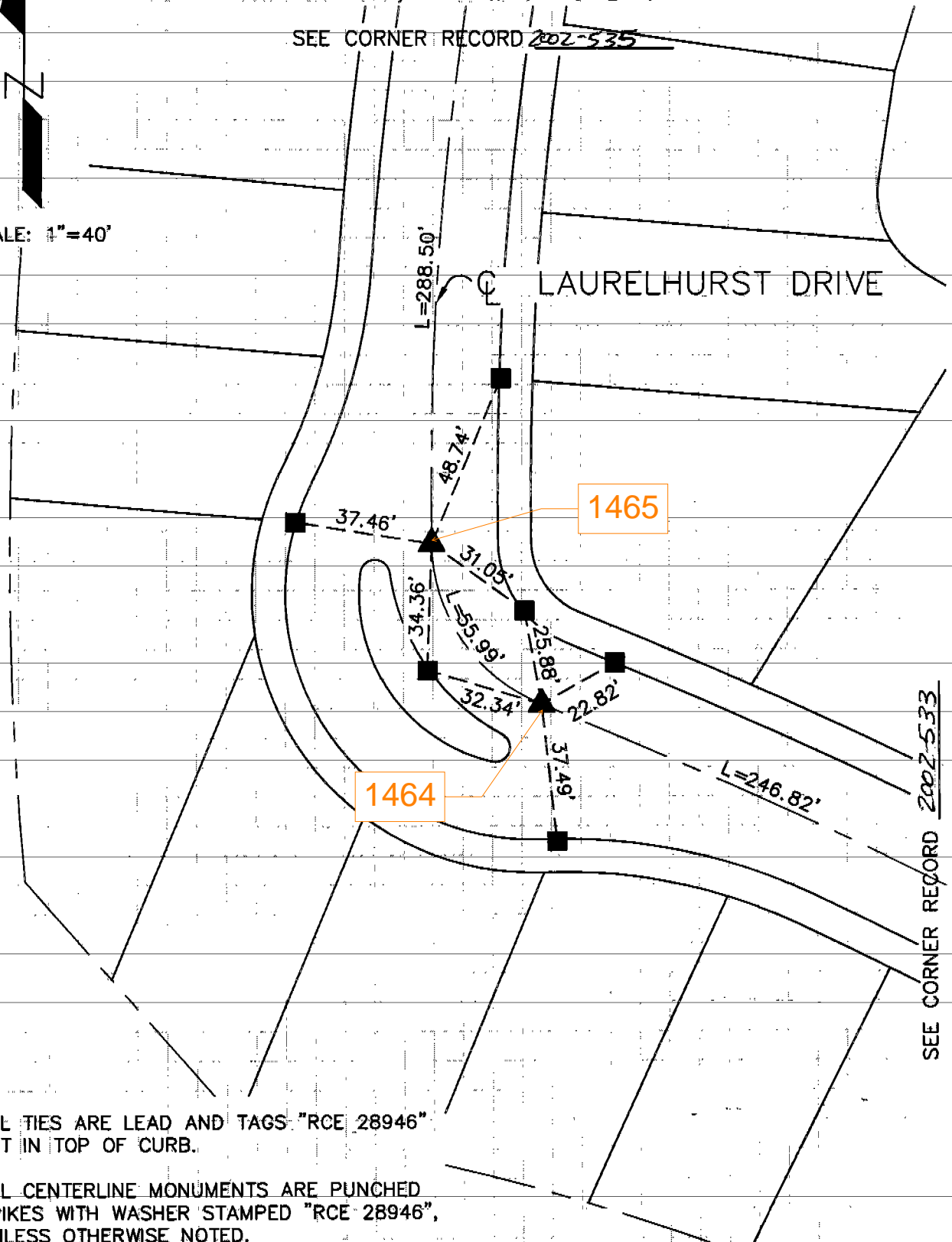
County Surveyor's Comment _____



CENTERLINE TIES FOR:
TRACT NO. 15622
 IN THE UNINCORPORATED TERRITORY OF THE
 COUNTY OF ORANGE, STATE OF CALIFORNIA

SEE CORNER RECORD 2002-535

SCALE: 1"=40'



- ALL TIES ARE LEAD AND TAGS "RCE 28946" SET IN TOP OF CURB.
- ▲ ALL CENTERLINE MONUMENTS ARE PUNCHED SPIKES WITH WASHER STAMPED "RCE 28946", UNLESS OTHERWISE NOTED.