

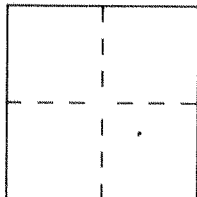
# CORNER RECORD

Document Number 2001-302

City of UNINCORPORATED TERRITORY

County of ORANGE, California

Brief Legal Description STREET CENTERLINE TIES FOR TRACT NO 15616  
M M 787/39-42



## CORNER TYPE

Government Corner ☐ Control ☐  
Meander ☐ Property ☒  
Rancho ☐ Other ☐  
Date of Survey 1-5-01

## COORDINATES (Optional)

N. \_\_\_\_\_  
E. \_\_\_\_\_  
Zone \_\_\_\_\_ Datum \_\_\_\_\_  
Elev. \_\_\_\_\_

Corner. — Left as found ☐ Found and tagged ☐ Established ☒ Reestablished ☐ Rebuilt ☐

Identification and type of corner found: Evidence used to identify or procedure used to establish or reestablish the corner:

SET SPIKE & WASHER STAMPED L S 6098 AT STREET  
CENTERLINE POINTS OF CONTROL OF ALL STREETS WITHIN  
THIS TRACT. PER ATTACHED TIE NOTES.

PORTION (SHEET 5 OF 5)

A description of the physical condition of the monument as found and as set or reset:

## SURVEYOR'S STATEMENT

This Corner Record was prepared by me or under my direction in conformance with  
the Land Surveyors' Act on Jan. 19 2001.

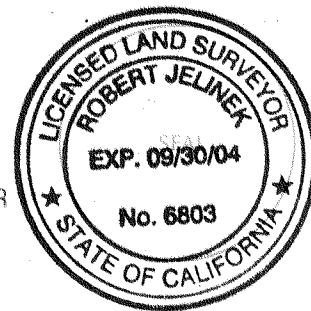
Signed John East L.S. or R.C.E. Number 6098



## COUNTY SURVEYOR'S STATEMENT

This Corner Record was received JAN 26 2001 20 and examined  
and filed March 14th 2001

Signed Robert Jelinek Title DEPUTY COUNTY SURVEYOR



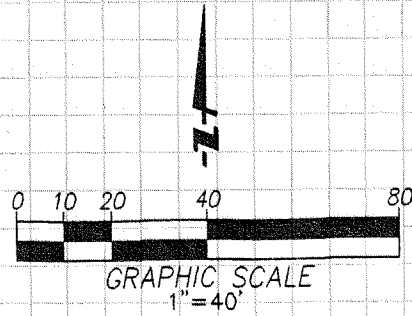
County Surveyor's Comment

# CENTERLINE TIE NOTES

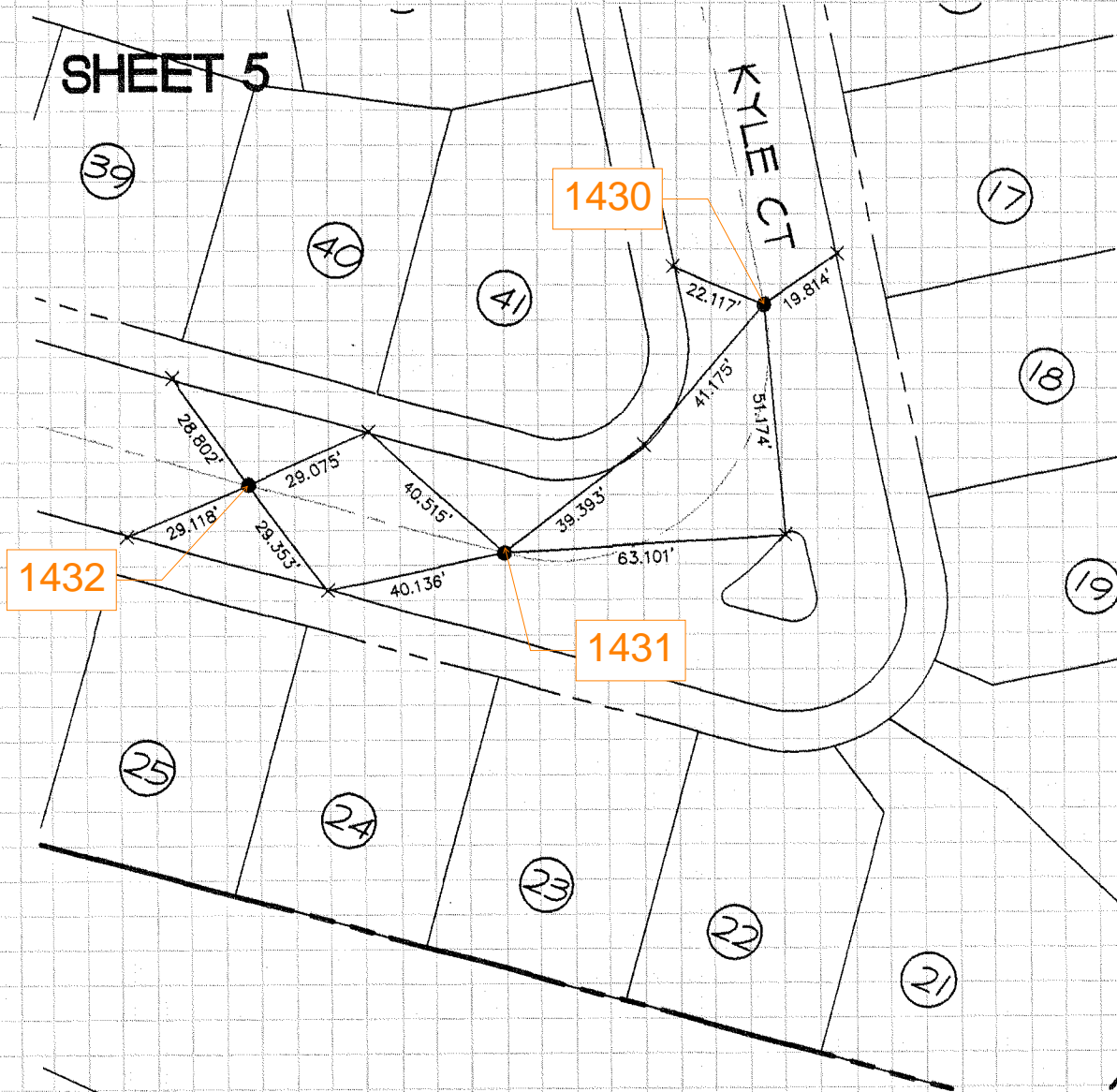
## LEGEND:

● INDICATES 8" SPIKE AND WASHER  
STAMPED LS 6098

× INDICATES NAIL AND TAG  
STAMPED LS 6098 SET IN TOP OF CURB



**SHEET 5**



**FUSCOE ENGINEERING INC.**