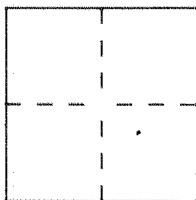


# CORNER RECORD

Document Number 2001-301  
 City of UNINCORPORATED TERRITORY County of ORANGE, California  
 Brief Legal Description STREET CENTERLINE TIES FOR TRACT NO 15616  
MM 787/39-42



## CORNER TYPE

Government Corner ☐ Control ☐  
 Meander ☐ Property ☒  
 Rancho ☐ Other ☐  
 Date of Survey 1-5-01

## COORDINATES (Optional)

N. \_\_\_\_\_  
 E. \_\_\_\_\_  
 Zone \_\_\_\_\_ Datum \_\_\_\_\_  
 Elev. \_\_\_\_\_

Corner — Left as found ☐ Found and tagged ☐ Established ☒ Reestablished ☐ Rebuilt ☐

Identification and type of corner found: Evidence used to identify or procedure used to establish or reestablish the corner:  
SET SPIKE & WASHER STAMPED L3 6098 AT STREET.  
CENTERLINE POINTS OF CONTROL OF ALL STREETS WITHIN  
THIS TRACT. PER ATTACHED TIE NOTES.

PORTION (SHEET 4 OF 5)

A description of the physical condition of the monument as found and as set or reset: \_\_\_\_\_  
 \_\_\_\_\_  
 \_\_\_\_\_  
 \_\_\_\_\_

## SURVEYOR'S STATEMENT

This Corner Record was prepared by me or under my direction in conformance with  
 the Land Surveyors' Act on Jan. 19 2001

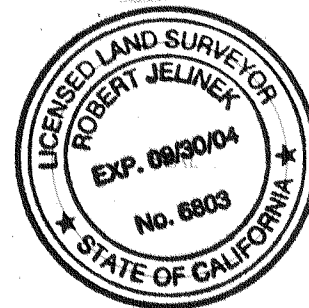
Signed John Eastman L.S. or R.C.E. Number 6098



## COUNTY SURVEYOR'S STATEMENT

This Corner Record was received JAN 26 2001 20 and examined  
 and filed March 14th 2001

Signed Robert Jelinek Title DEPUTY COUNTY SURVEYOR

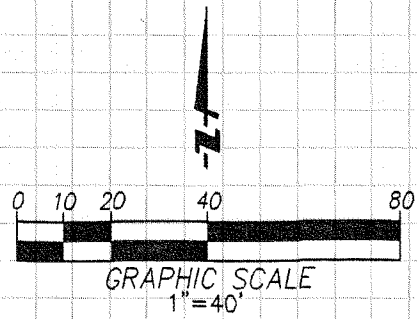


County Surveyor's Comment \_\_\_\_\_  
 \_\_\_\_\_  
 \_\_\_\_\_  
 \_\_\_\_\_

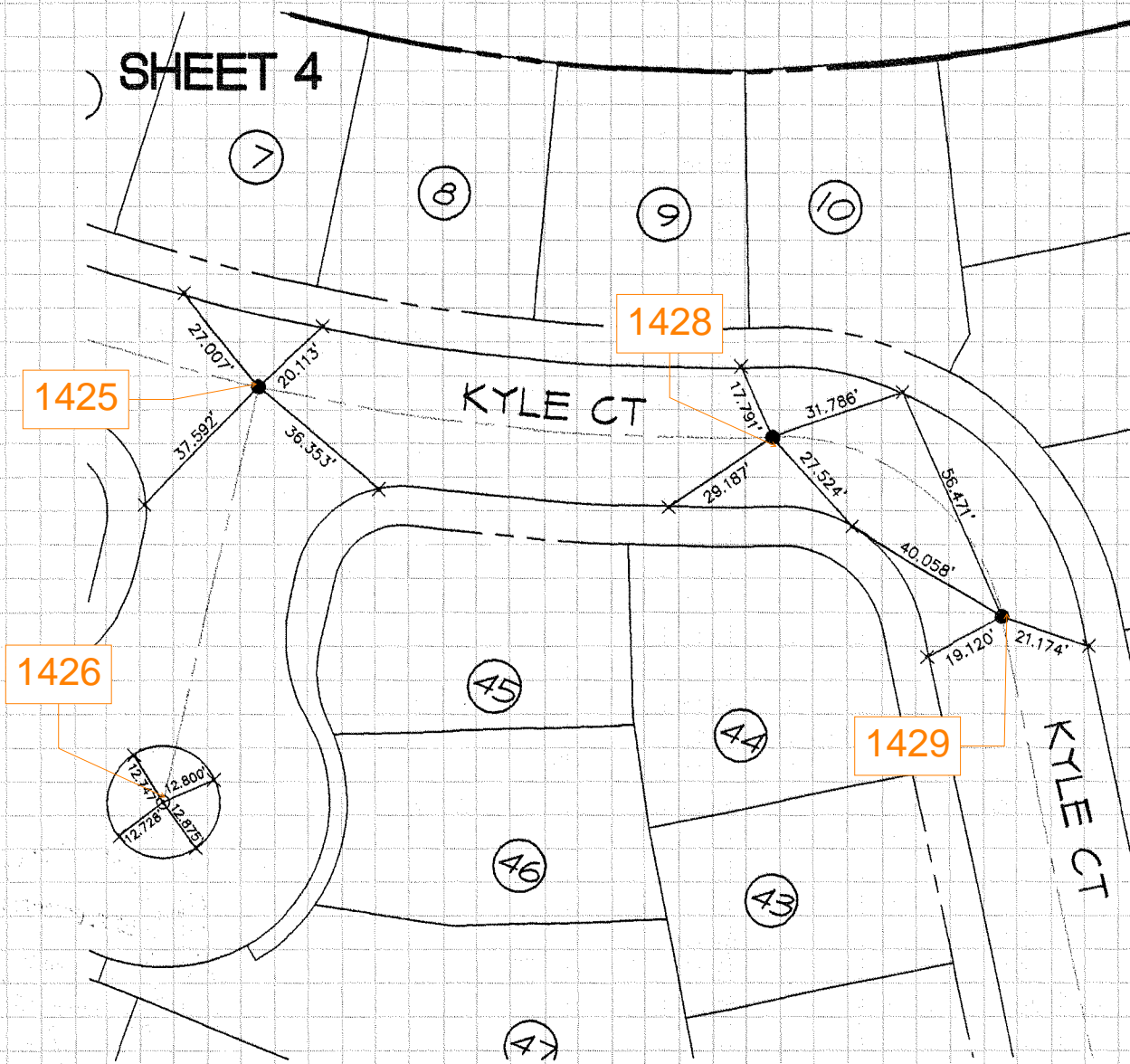
CENTERLINE TIE NOTES

LEGEND:

- INDICATES 8" SPIKE AND WASHER  
STAMPED LS 6098
- × INDICATES NAIL AND TAG  
STAMPED LS 6098 SET IN TOP OF CURB



SHEET 4



FUSCOE ENGINEERING INC.