

CORNER RECORD

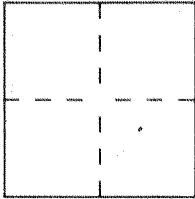
City of UNINCORPORATED TERRITORY

Document Number 2001-300

County of ORANGE

California

Brief Legal Description STREET CENTERLINE TIES FOR TRACT NO 15616
M M 787/39-42



CORNER TYPE

Government Corner ☐ Control ☐
Meander ☐ Property ☒
Rancho ☐ Other ☐
Date of Survey 1-5-01

COORDINATES (Optional)

N. _____
E. _____
Zone _____ Datum _____
Elev. _____

Corner — Left as found ☐ Found and tagged ☐ Established ☒ Reestablished ☐ Rebuilt ☐

Identification and type of corner found: Evidence used to identify or procedure used to establish or reestablish the corner:

SET SPIKE & WASHER STAMPED L5 6098 AT STREET
CENTERLINE POINTS OF CONTROL OF ALL STREETS WITHIN
THIS TRACT, PER ATTACHED TIE NOTES.

PORTION (SHEET 3 OF 5)

A description of the physical condition of the monument as found and as set or reset: _____

SURVEYOR'S STATEMENT

This Corner Record was prepared by me or under my direction in conformance with the Land Surveyors' Act on Jan. 19 2001

Signed Thomas Earl Probst L.S. or R.C.S. Number 6098

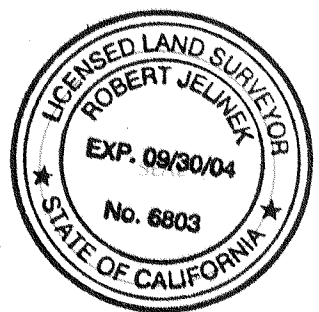


COUNTY SURVEYOR'S STATEMENT

This Corner Record was received JAN 26 2001 20 and examined

and filed March 14th 2001

Signed Robert Jelinek Title DEPUTY COUNTY SURVEYOR



County Surveyor's Comment _____

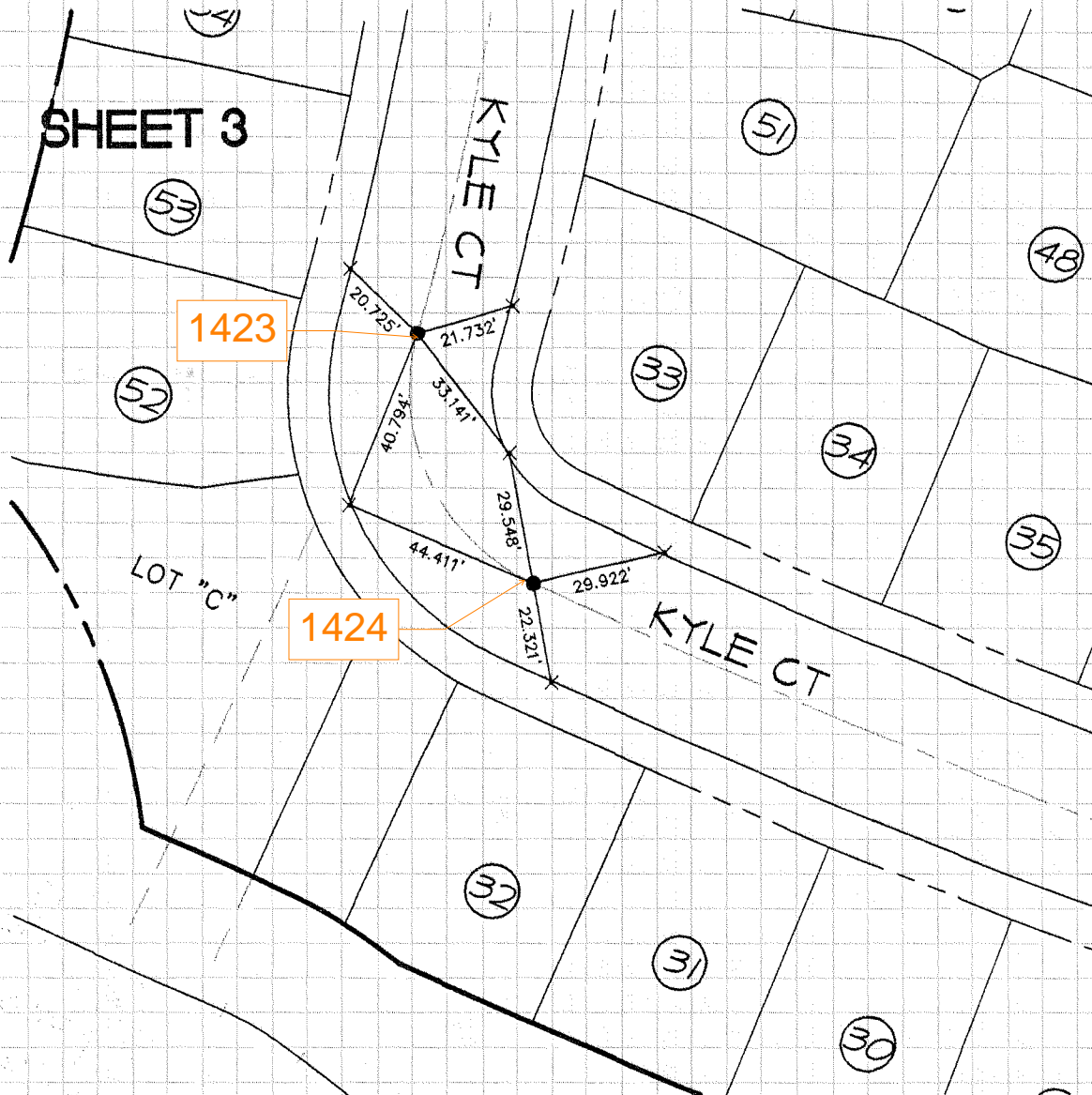
CENTERLINE TIE NOTES

LEGEND:

- INDICATES 8" SPIKE AND WASHER
STAMPED LS 6098
- × INDICATES NAIL AND TAG
STAMPED LS 6098 SET IN TOP OF CURB



GRAPHIC SCALE
1" = 40'



FUSCOE ENGINEERING INC.