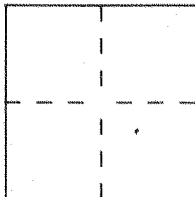


CORNER RECORD

City of UNINCORPORATED TERRITORY
 Brief Legal Description STREET CENTERLINE

Document Number 2001-299
 County of ORANGE, California
TIES FOR TRACT NO 15616
M M 187/39-42



CORNER TYPE

Government Corner ☐ Control ☐
 Meander ☐ Property ☒
 Rancho ☐ Other ☐
 Date of Survey 1-5-01

COORDINATES (Optional)

N. _____
 E. _____
 Zone _____ Datum _____
 Elev. _____

Corner — Left as found ☐ Found and tagged ☐ Established ☒ Reestablished ☐ Rebuilt ☐

Identification and type of corner found: Evidence used to identify or procedure used to establish or reestablish the corner:

SET SPIKE & WASHER STAMPED L3 6098 AT STREET.
CENTERLINE POINTS OF CONTROL OF ALL STREETS WITHIN
THIS TRACT, PER ATTACHED TIE NOTES.

PORTION (SHEET 2 OF 5)

A description of the physical condition of the monument as found and as set or reset: _____

SURVEYOR'S STATEMENT

This Corner Record was prepared by me or under my direction in conformance with
 the Land Surveyors' Act on Jan. 19 2001

Signed John East L.S. or R.C.E. Number 6098

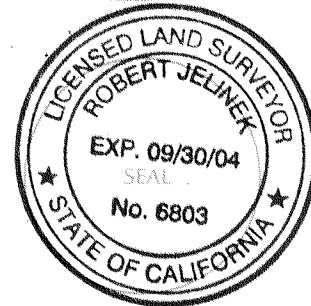


COUNTY SURVEYOR'S STATEMENT

This Corner Record was received JAN 26 2001 20 and examined

and filed March 14th 2001

Signed Robert Jelinek Title DEPUTY COUNTY SURVEYOR



County Surveyor's Comment _____

CENTERLINE TIE NOTES

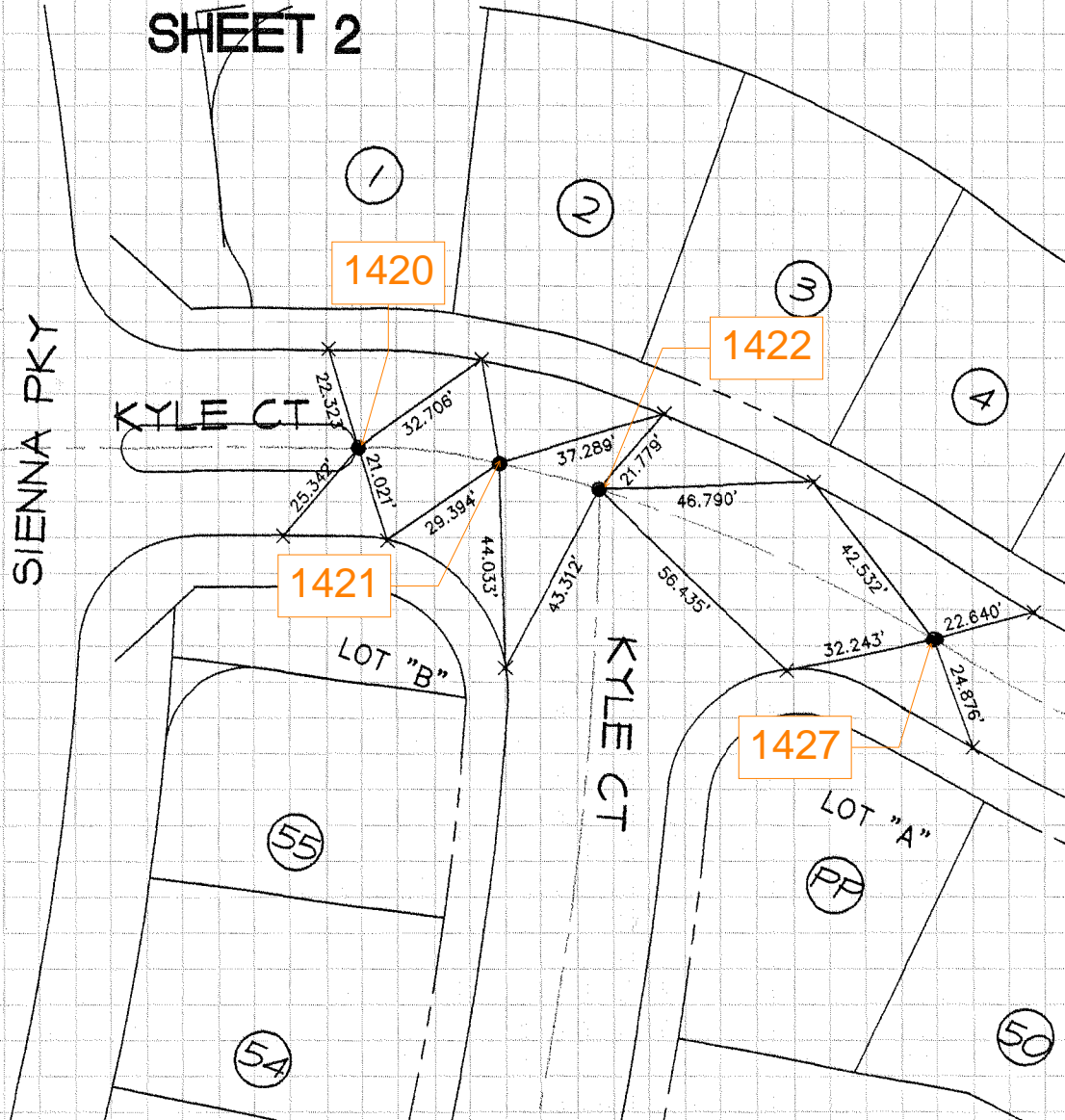
LEGEND:

- INDICATES 8" SPIKE AND WASHER
STAMPED LS 6098

- × INDICATES NAIL AND TAG
STAMPED LS 6098 SET IN TOP OF CURB



GRAPHIC SCALE
1"=40'



FUSCOE ENGINEERING INC.