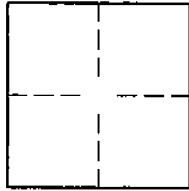


# CORNER RECORD

Document Number 2001-1451

City of THE UNINCORPORATED TERRITORY County of ORANGE, California

Brief Legal Description TRACT 15631 M.M. 795/26-30



## CORNER TYPE

Government corner ☐ Control ☐  
Meander ☐ Property ☐  
Rancho ☐ Other ☒  
Date of Survey SEPTEMBER, 2001

## COORDINATES (OPTIONAL)

N. \_\_\_\_\_  
E. \_\_\_\_\_  
Zone \_\_\_\_\_ NAD27 ☐ NAD83 ☐  
NAD83 Epoch \_\_\_\_\_  
Elev. \_\_\_\_\_  
Vert. Datum: ☐ NGVD29 ☐ NAVD88 ☐  
Meas. Units: ☐ Metric ☐ Imperial ☐

Corner— Left as found ☐ Found and tagged ☐ Established ☒ Reestablished ☐ Rebuilt ☐

Identification and type of corner found: Evidence used to identify or procedure used to establish or reestablish the corner:

SEE PAGE 2

A description of the physical condition of the monument as found and as set or reset: \_\_\_\_\_

SEE PAGE 2

## SURVEYOR'S STATEMENT

This Corner Record was prepared by me or under my direction in conformance with the Land Surveyors' Act on \_\_\_\_\_

Signed [Signature] P.L.S. or R.C.E. Number 28946

## COUNTY SURVEYOR'S STATEMENT

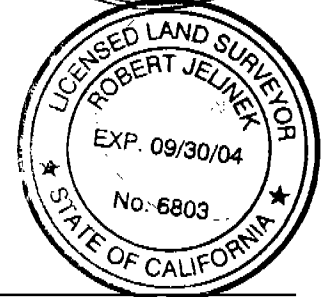
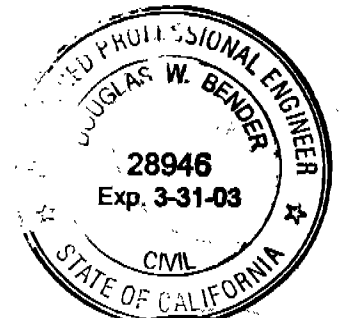
This Corner Record was received OCT 16 2001

and examined and filed November 14th 2001

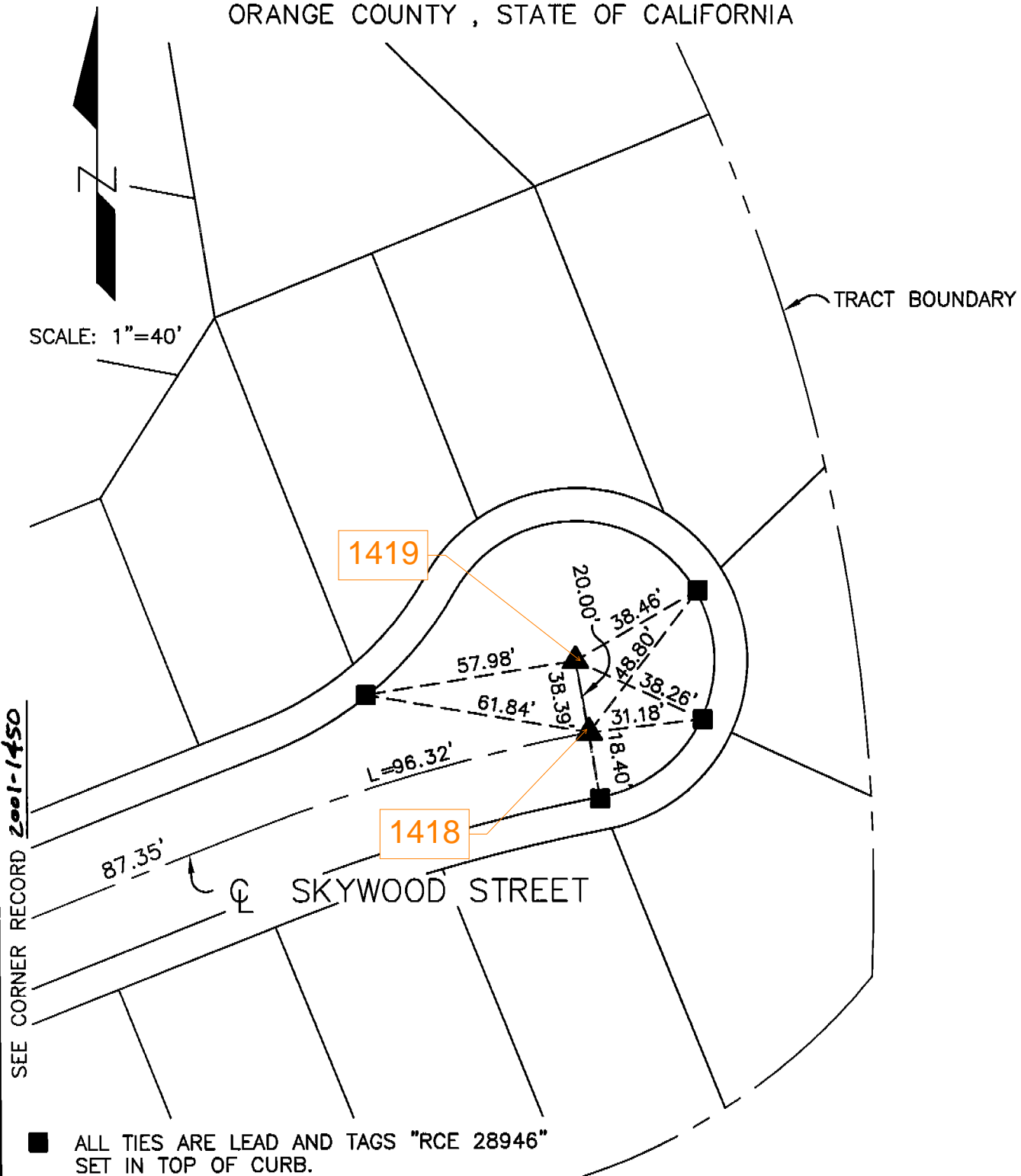
Signed [Signature] P.L.S. or R.C.E. Number 6803

Title DEPUTY COUNTY SURVEYOR

County Surveyor's Comment \_\_\_\_\_



CENTERLINE TIES FOR:  
**TRACT NO. 15631**  
 IN THE UNINCORPORATED TERRITORY OF  
 ORANGE COUNTY, STATE OF CALIFORNIA



SEE CORNER RECORD 2001-1450

■ ALL TIES ARE LEAD AND TAGS "RCE 28946"  
 SET IN TOP OF CURB.

▲ ALL CENTERLINE MONUMENTS ARE PUNCHED  
 SPIKES WITH WASHER STAMPED "RCE 28946",  
 UNLESS OTHERWISE NOTED.