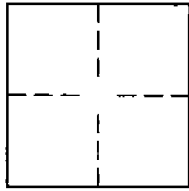


# CORNER RECORD

Document Number 2001-1449

City of THE UNINCORPORATED TERRITORY County of ORANGE, California

Brief Legal Description TRACT 15631 M.M. 795/26-30



## CORNER TYPE

Government corner ☐ Control ☐  
Meander ☐ Property ☐  
Rancho ☐ Other ☒  
Date of Survey SEPTEMBER, 2001

## COORDINATES (OPTIONAL)

N. \_\_\_\_\_  
E. \_\_\_\_\_  
Zone \_\_\_\_\_ NAD27 ☐ NAD83 ☐  
NAD83 Epoch \_\_\_\_\_  
Elev. \_\_\_\_\_  
Vert. Datum: ☐ NGVD29 ☐ NAVD88 ☐  
Meas. Units: ☐ Metric ☐ Imperial ☐

Corner— Left as found ☐ Found and tagged ☐ Established ☒ Reestablished ☐ Rebuilt ☐

Identification and type of corner found: Evidence used to identify or procedure used to establish or reestablish the corner:

SEE PAGE 2

A description of the physical condition of the monument as found and as set or reset: \_\_\_\_\_

SEE PAGE 2

## SURVEYOR'S STATEMENT

This Corner Record was prepared by me or under my direction in conformance with the Land Surveyors' Act on \_\_\_\_\_

Signed [Signature] P.L.S. or R.C.E. Number 28946

## COUNTY SURVEYOR'S STATEMENT

**OCT 16 2001**

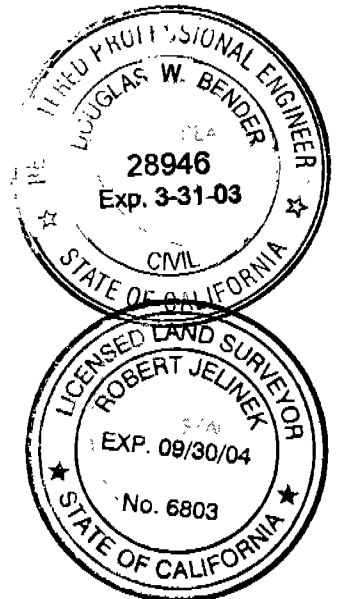
This Corner Record was received \_\_\_\_\_

and examined and filed November 14th 2001

Signed [Signature] P.L.S. or R.C.E. Number 6803

Title DEPUTY COUNTY SURVEYOR

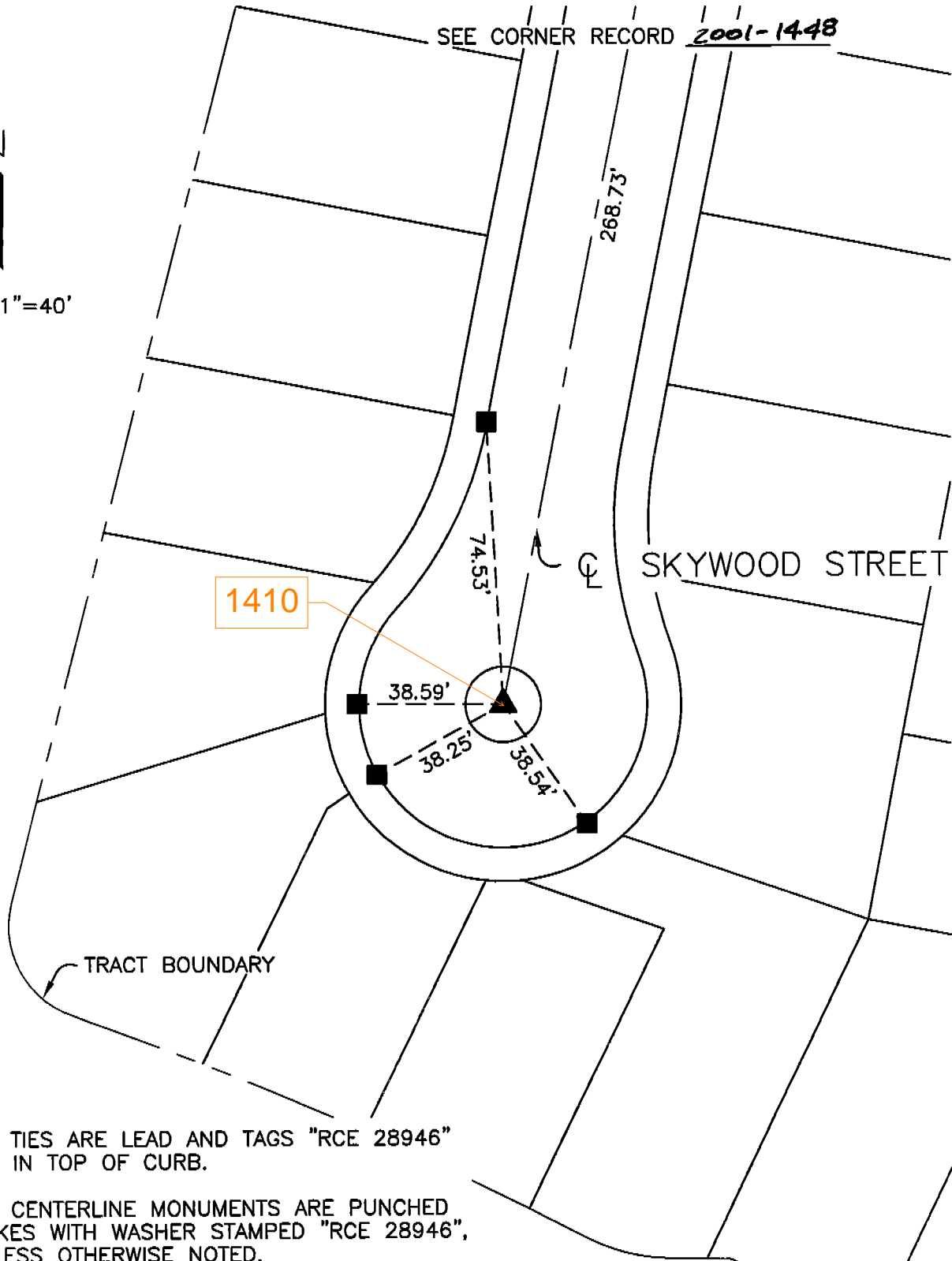
County Surveyor's Comment \_\_\_\_\_



CENTERLINE TIES FOR:  
TRACT NO. 15631  
IN THE UNINCORPORATED TERRITORY OF  
ORANGE COUNTY, STATE OF CALIFORNIA



SCALE: 1"=40'



- ALL TIES ARE LEAD AND TAGS "RCE 28946"  
SET IN TOP OF CURB.
- ▲ ALL CENTERLINE MONUMENTS ARE PUNCHED  
SPIKES WITH WASHER STAMPED "RCE 28946",  
UNLESS OTHERWISE NOTED.