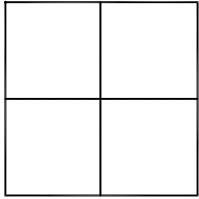


# CORNER RECORD

Agency Index

Document Number

**2020-3638**City of UNINCORPORATED TERRITORYCounty of ORANGE, CaliforniaBrief Legal Description INTERSECTION OF SIENNA PKWY AND WALDEN ST**CORNER TYPE**

Government Corner ☐ Control ☒  
Meander ☐ Property ☐  
Rancho ☐ Other ☐

Date of Survey September 25, 2020**COORDINATES (Optional)**

N. \_\_\_\_\_ E. \_\_\_\_\_  
Elevation \_\_\_\_\_  
Units Metric ☐ U.S. Survey Foot ☒  
Horizontal Datum \_\_\_\_\_  
Zone \_\_\_\_\_ Epoch Date \_\_\_\_\_  
Vertical Datum \_\_\_\_\_

☐ Complies with Public Resources Code §§8801-8819☐ Complies with Public Resources Code §§8890-8902PLS Act Ref: ☐ 8765(d) ☒ 8771 ☐ 8773 ☐ Other:

Corner/Monument: ☒ Left as found ☐ Established ☐ Rebuilt ☐ Pre-Construction  
☐ Found and tagged ☒ Reestablished ☐ Referenced ☒ Post-Construction

Narrative of corner identified and monument as found, set, reset, replaced, or removed:

☒ NOTES:**SURVEYOR'S STATEMENT**

This Corner Record was prepared by me or under my direction in conformance with  
the Professional Land Surveyors' Act on January 29, 2021

Signed [Signature] (P.L.S.) or R.C.E. No. 7172**COUNTY SURVEYOR'S STATEMENT**This Corner Record was received FEBRUARY 12, 2021and examined and filed APRIL 26, 2021Signed [Signature] (P.L.S.) or R.C.E. No. 6617Title COUNTY SURVEYOR

County Surveyor's Comment \_\_\_\_\_

## POST-CONSTRUCTION C.R.

## RECORD REFERENCES:

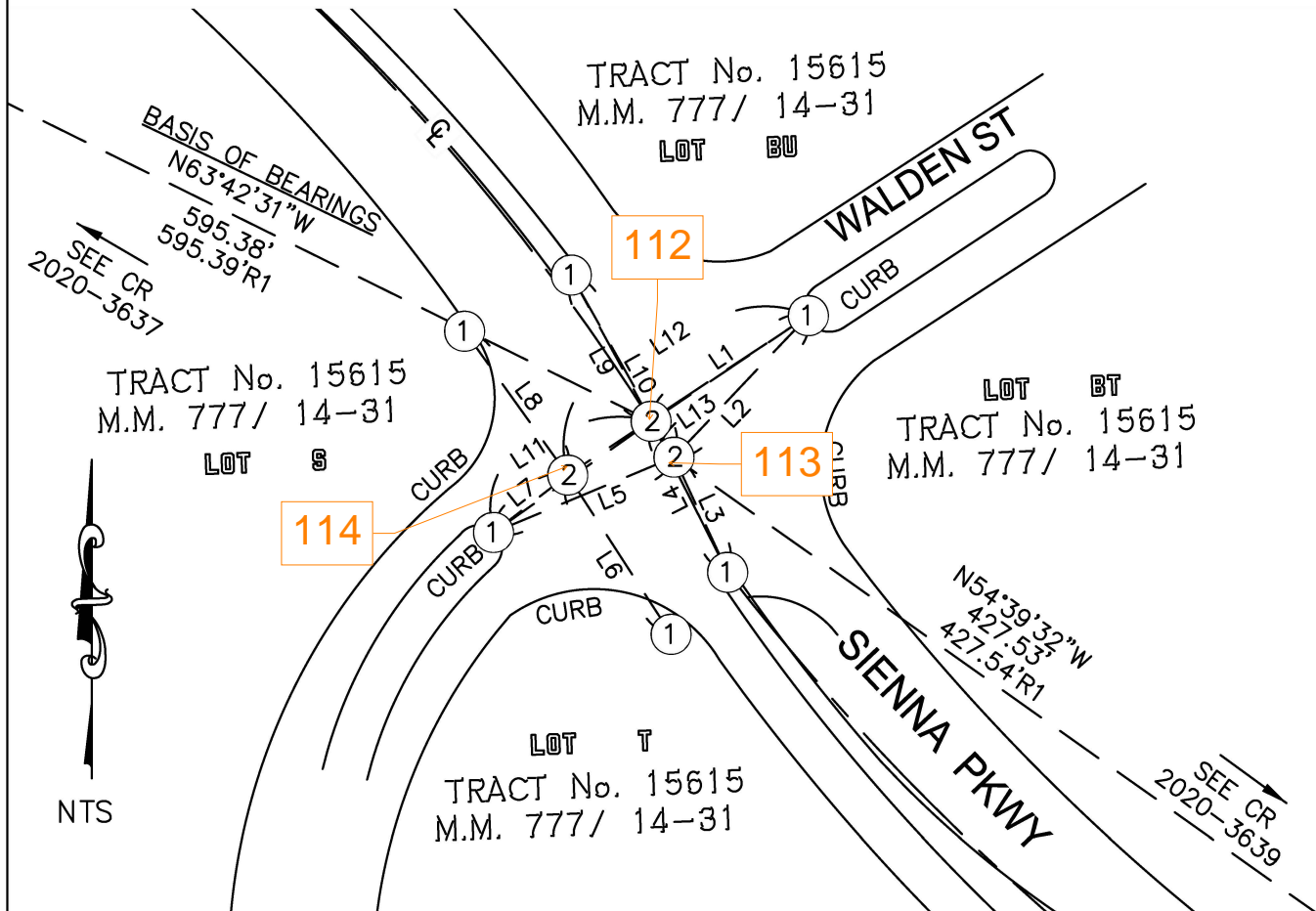
(R1) RECORD OR CALC FROM RECORD PER  
C.R. 2020-0872

## NOTES:

THE PURPOSE OF THIS RECORD IS TO DOCUMENT THE PERPETUATION OF FOUND MONUMENT(S) PURSUANT TO THE PLS ACT SECTION 8771. NO CLAIM IS MADE AS TO THE RELATIONSHIP OF THE POINTS SHOWN HEREON TO TRUE BOUNDARY LOCATIONS.

BASIS OF BEARINGS: ALONG THE C/L OF SIENNA PKWY. (CHORD BEARING) BEING N63°42'31"W AS SHOWN HEREON.

LINE TABLE			
LINE #	BEARING	MEASURED DISTANCE	RECORD DISTANCE
L1	N56°06'45"E	47.72'	47.72' R1
L2	N43°30'16"E	49.15'	49.16' R1
L3	N24°58'18"W	31.99'	32.00' R1
L4	N26°52'30"W	42.65'	42.64' R1
L5	N67°21'25"E	49.26'	49.25' R1
L6	N32°59'31"W	47.83'	47.82' R1
L7	N52°16'31"E	23.63'	23.63' R1
L8	N35°38'47"W	44.58'	44.59' R1
L9	N28°37'04"W	41.95'	41.96' R1
L10	N29°25'12"W	52.66'	52.65' R1
L11	N54°47'15"E	48.58'	48.58' R1
L12	N56°28'25"E	72.70'	72.70' R1
L13	N32°33'26"W	10.73'	10.72' R1



## MONUMENT NOTES:

- ① FOUND LEAD, TACK AND TAG STAMPED "LS 5557 TIE POINT" PER R1.
- ② SET SPIKE AND WASHER IN ASPHALT STAMPED "PLS 7172".

## NOTES:

- BEARINGS SHOWN HEREON ARE ASSUMED AND ARE DISPLAYED FOR ANGULAR RELATIONSHIP ONLY.