

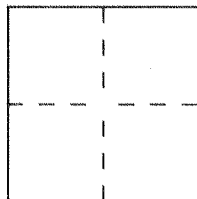
BLOCK 5157
MODULES 14, 24-29, 35-39, 46-49, 59
CORNER RECORD

Document Number 2001-384

City of UNINCORPORATED TERRITORY

County of ORANGE, California

Brief Legal Description TRACT NO. 15615, M.M. 777 / 14-31



CORNER TYPE

Government Corner ☐ Control ☒
Meander ☐ Property ☐
Rancho ☐ Other ☐
Date of Survey November 2000

COORDINATES
(Optional)

N. _____
E. _____
Zone _____ Datum _____
Elev. _____

Corner — Left as found ☐ Found and tagged ☐ Established ☒ Reestablished ☐ Rebuilt ☐

Identification and type of corner found: Evidence used to identify or procedure used to establish or reestablish the corner:

THE PURPOSE OF THIS CORNER RECORD IS TO PERPETUATE
THE CENTERLINE OF MAYBECK LANE.

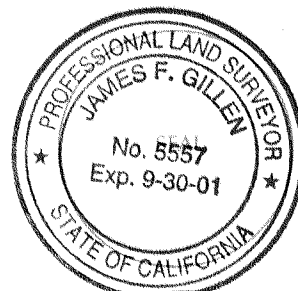
A description of the physical condition of the monument as found and as set or reset:

- 1.) SET SPIKE AND WASHER STAMPED "LS5557" AS NOTED.
- 2.) SET LEAD, TACK AND TAG "LS5557 TIE PT." AS NOTED.

SURVEYOR'S STATEMENT

This Corner Record was prepared by me or under my direction in conformance with
the Land Surveyors' Act on FEBRUARY 5 ~~th~~ 2001

Signed [Signature] L.S. or R.C.E. Number 5557

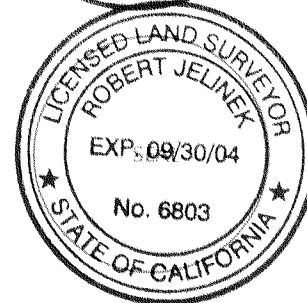


COUNTY SURVEYOR'S STATEMENT

This Corner Record was received FEB 13 2001 and examined

and filed March 29th 2001

Signed [Signature] Title DEPUTY COUNTY SURVEYOR



County Surveyor's Comment _____

HUITT-ZOLIARS

C/L TIES—TRACT NO. 15615

JAMES F. GILLEN, LS 5557

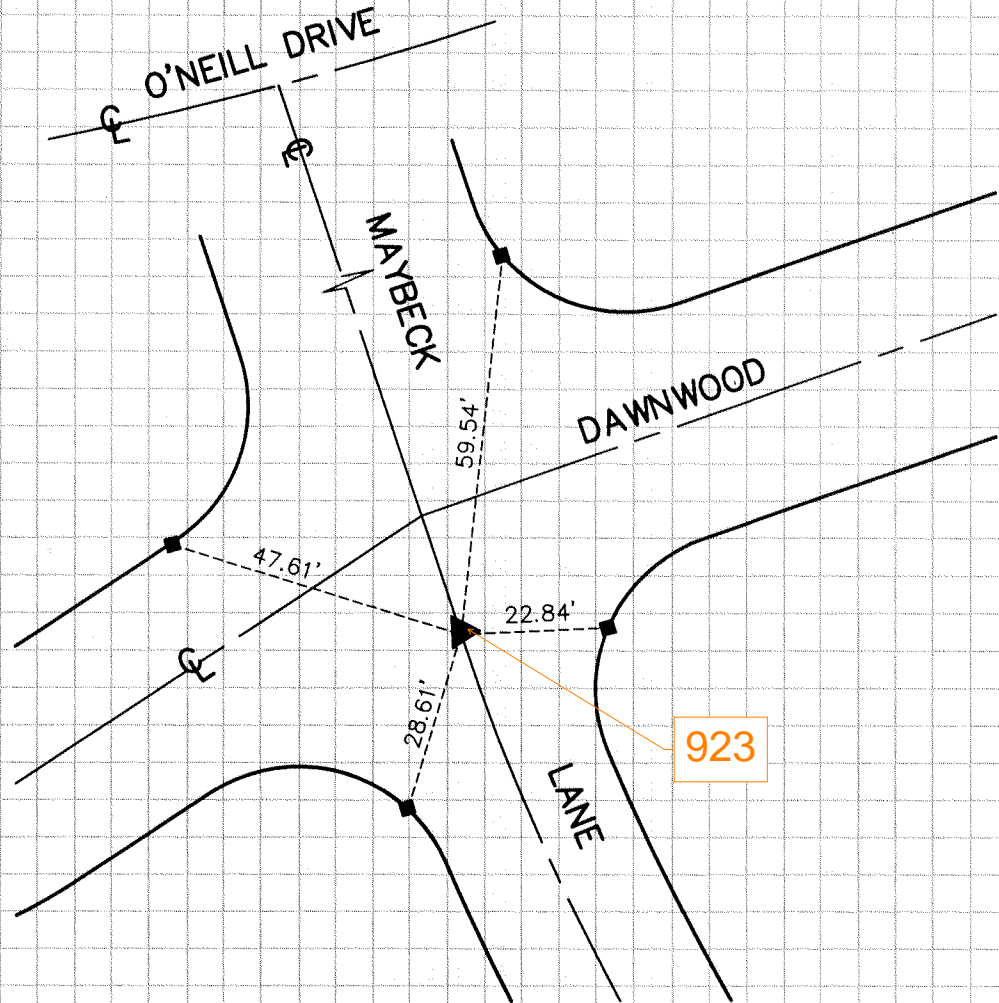
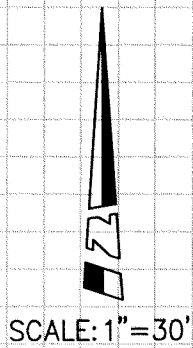
DATE OF SURVEY

NOVEMBER 2000

PARTY

C. BRUSO

B. SANFORD



▲ INDICATES SET SPIKE AND WASHER
STAMPED "LS 5557"

■ INDICATES SET LEAD, TACK & TAG
"LS 5557 TIE PT." IN TOP OF CURB