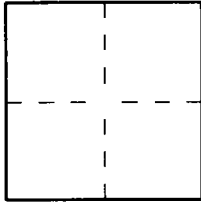


CORNER RECORD

Document Number 2002-2067City of (UNINCORPORATED)County of ORANGE, CaliforniaBrief Legal Description CENTERLINE TIE NOTES FOR TRACT NO. 15625

CORNER TYPE

Government Corner ☐ Control ☐
Meander ☐ Property ☒
Rancho ☐ Other ☐

Date of Survey OCTOBER, 2002

COORDINATES (Optional)

N. _____
E. _____
Zone _____ NAD27 ☐ NAD83 ☐
NAD83 Epoch _____
Elev. _____
Vert. Datum: NGVD29 ☐ NAVD88 ☐
Meas. Units: Metric ☐ Imperial ☐
U.S. Survey foot ☐

Corner — Left as found ☐ Found and tagged ☐ Established ☒ Reestablished ☐ Rebuilt ☐

Identification and type of corner found; Evidence used to identify or procedure used to establish or reestablish the corner:

CENTERLINE TIE NOTES FOR TRACT NO. 15625, M.M. 782/38-44A description of the physical condition of the monument as found and as set or reset: SEE PAGE 2

SURVEYOR'S STATEMENT

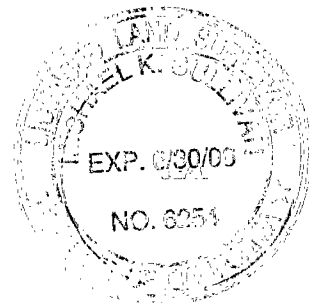
This Corner Record was prepared by me or under my direction in conformance with
the Land Surveyor's Act on DECEMBER 10, 2002

Signed  L.S. or R.C.E. No. 6098

COUNTY SURVEYOR'S STATEMENT

DEC 17 2002

This Corner Record was received _____

and examined and filed 01-08-03Signed  L.S. or R.C.E. No. 6254Title DEPUTY COUNTY SURVEYOR

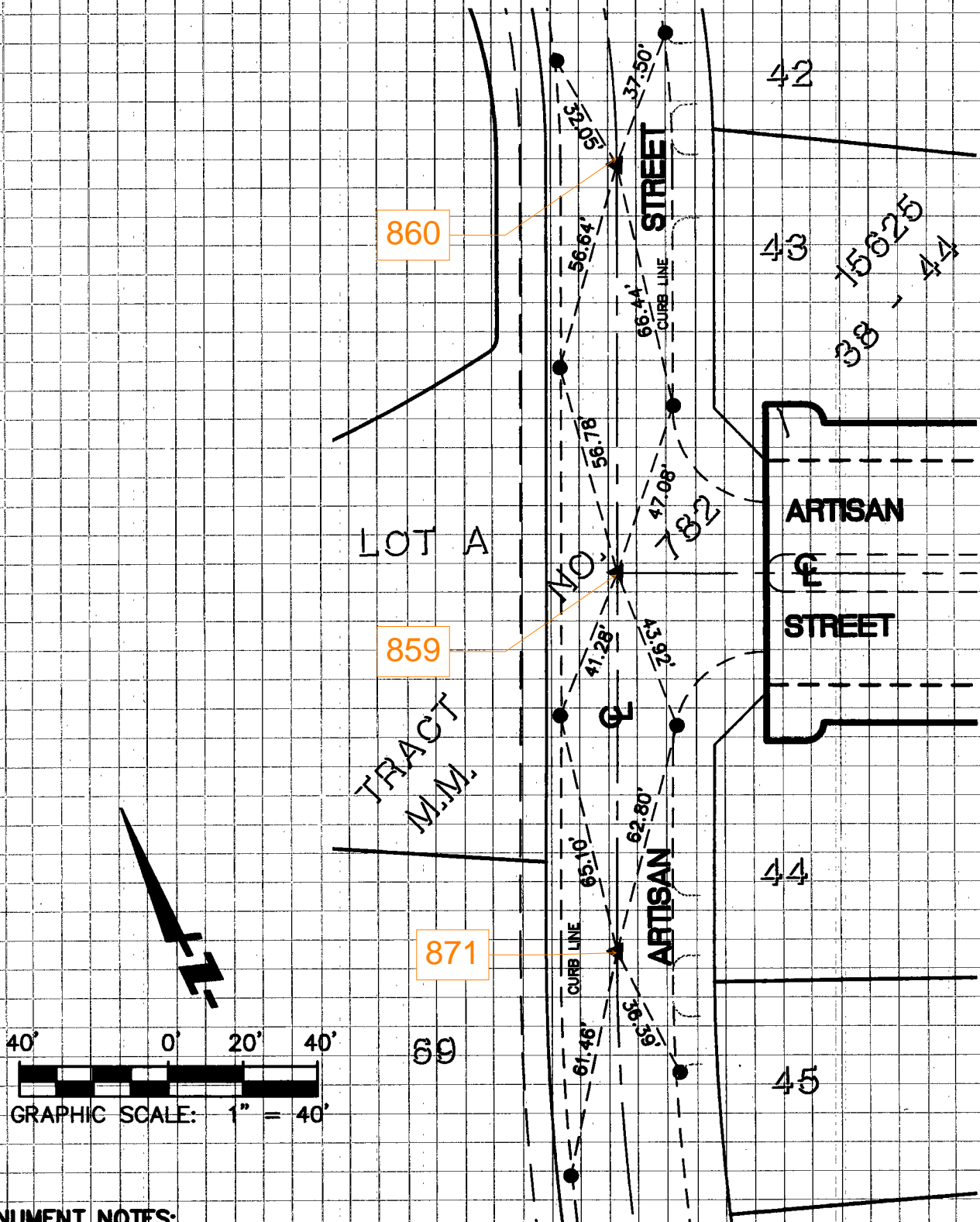
County Surveyor's Comment _____

FUSCOE ENGINEERING, INC.

LAND SURVEYOR: THOMAS EARL PROPST, P.L.S. 6098

SEE CORNER

RECORD NO. 2002-2065



MONUMENT NOTES:

- ▲ SPIKE AND WASHER STAMPED "LS 6098"
- LEAD, NAIL AND TAG STAMPED "LS 6098"

SEE CORNER
RECORD NO. 2002-2068