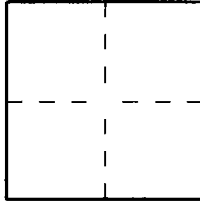


CORNER RECORD

Document Number 2002-2055City of (UNINCORPORATED)County of Orange

California

Brief Legal Description CENTERLINE TIE NOTES FOR TRACT NO. 15624

CORNER TYPE

Government Corner ☐ Control ☐
Meander ☐ Property ☒
Rancho ☐ Other ☐

Date of Survey October, 2002

COORDINATES (Optional)

N. _____
E. _____
Zone _____ NAD27 ☐ NAD83 ☐
NAD83 Epoch _____
Elev. _____
Vert. Datum: NGVD29 ☐ NAVD88 ☐
Meas. Units: Metric ☐ Imperial ☐
U.S. Survey foot ☐

Corner — Left as found ☐ Found and tagged ☐ Established ☒ Reestablished ☐ Rebuilt ☐

Identification and type of corner found; Evidence used to identify or procedure used to establish or reestablish the corner:

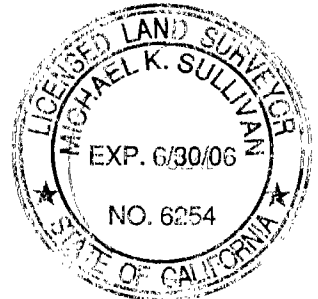
CENTERLINE TIE NOTES FOR TRACT NO. 15624, M.M. 798/38-43A description of the physical condition of the monument as found and as set or reset: SEE PAGE @

SURVEYOR'S STATEMENT

This Corner Record was prepared by me or under my direction in conformance with
the Land Surveyor's Act on December 10, 2002

Signed [Signature] L.S. or ~~R.C.E.~~ No. 6098

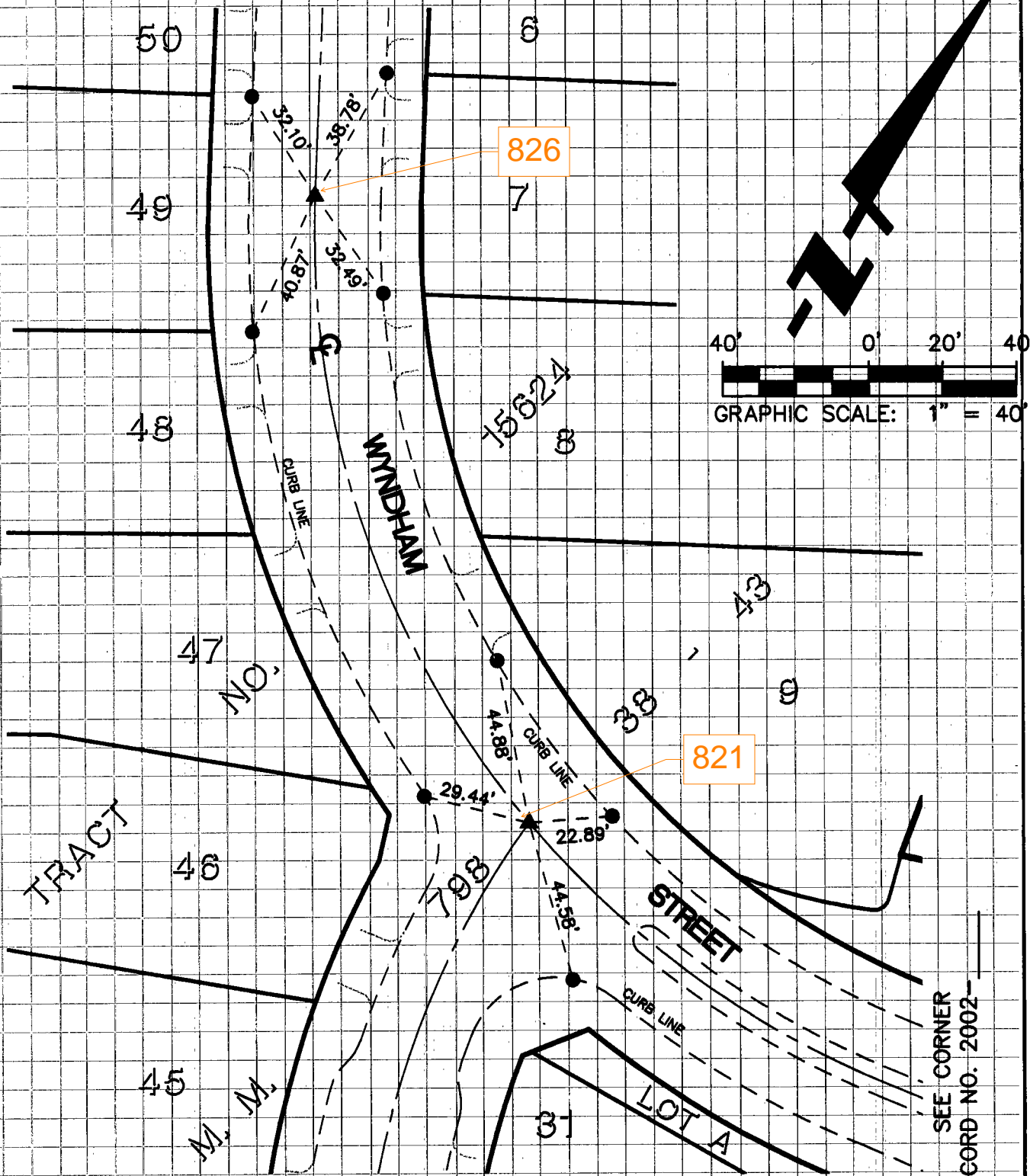
COUNTY SURVEYOR'S STATEMENT

This Corner Record was received DEC 17 2002and examined and filed 01-08-03Signed [Signature] L.S. or R.C.E. No. 6254Title DEPUTY COUNTY SURVEYOR

County Surveyor's Comment _____

FUSCOE ENGINEERING, INC.
LAND SURVEYOR: THOMAS EARL PROPST, P.L.S. 6098

SEE CORNER
RECORD NO. 2002-~~2054~~



SEE CORNER
RECORD NO. 2002-~~2056~~

MONUMENT NOTES:

- ▲ SPIKE AND WASHER STAMPED "LS 6098"
- LEAD, NAIL AND TAG STAMPED "LS 6098"