

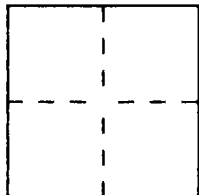
CORNER RECORD

Document Number 2002-2060

City of (UNINCORPORATED)

County of ORANGE, California

Brief Legal Description CENTERLINE TIE NOTES FOR TRACT NO. 15624



CORNER TYPE

Government Corner ☐ Control ☐
Meander ☐ Property ☒
Rancho ☐ Other ☐
Date of Survey OCTOBER, 2002

COORDINATES (Optional)

N. _____
E. _____
Zone _____ Datum _____
Elev. _____

Corner — Left as found ☐ Found and tagged ☐ Established ☒ Reestablished ☐ Rebuilt ☐

Identification and type of corner found: Evidence used to identify or procedure used to establish or reestablish the corner:
CENTERLINE TIE NOTES FOR TRACT NO. 15624, M.M. 798/38-43

A description of the physical condition of the monument as found and as set or reset: SEE PAGE 2

SURVEYOR'S STATEMENT

This Corner Record was prepared by me or under my direction in conformance with
the Land Surveyors' Act on DECEMBER 10, 2002

Signed [Signature] L.S. or R.C.E. Number 6098



COUNTY SURVEYOR'S STATEMENT

This Corner Record was received DEC 17 2002 and examined
and filed 01-08-03

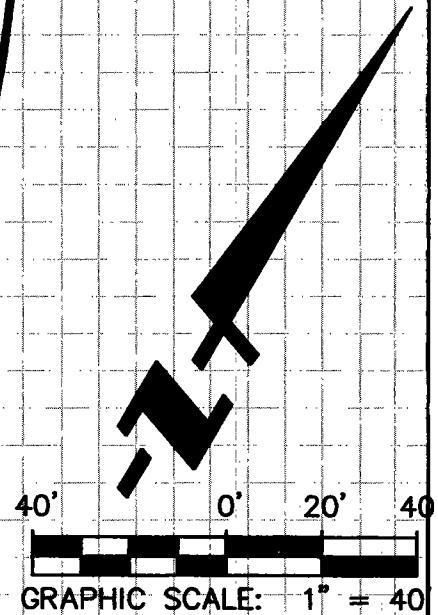
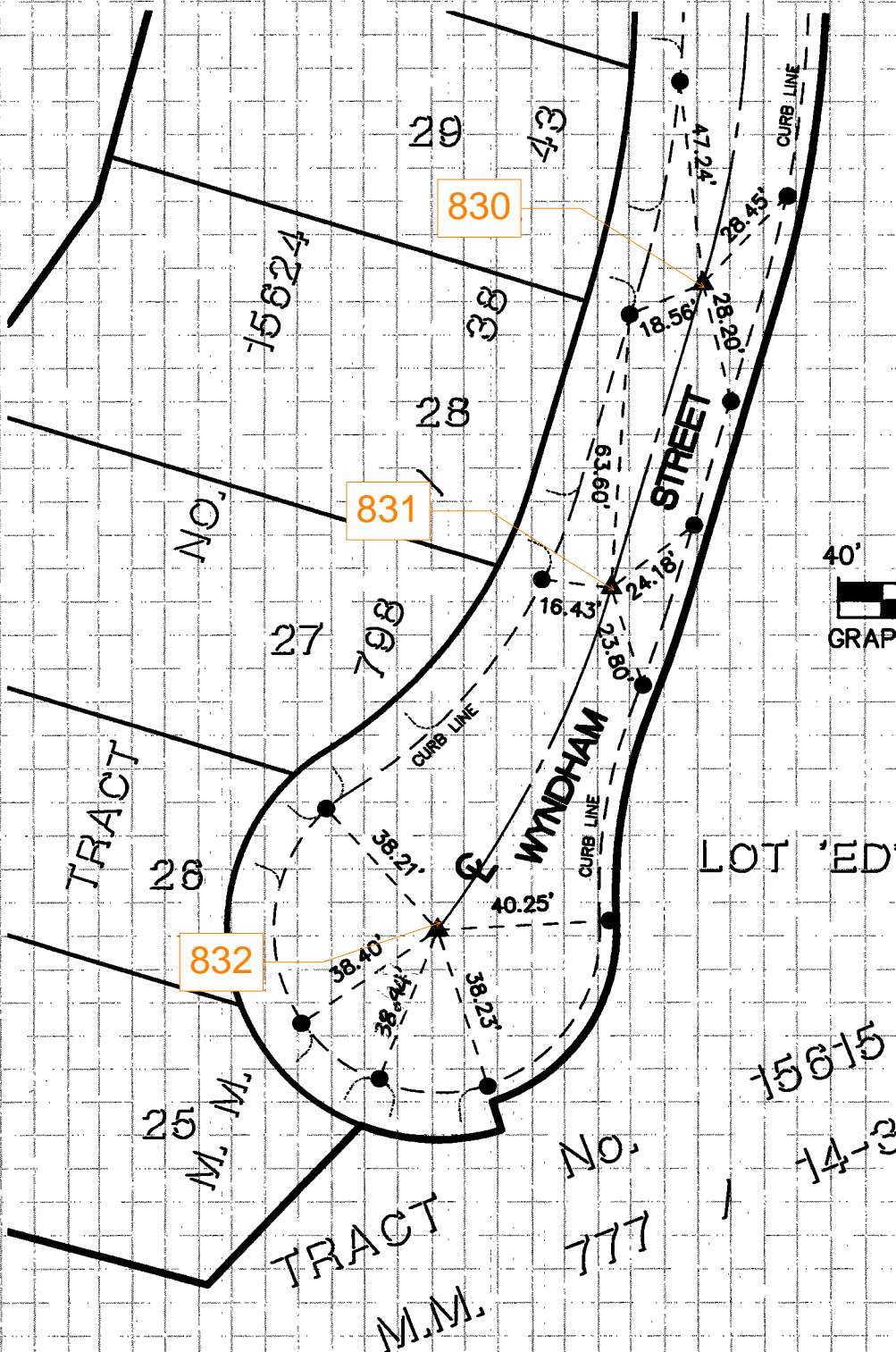
Signed Michael K. Sull DEPUTY COUNTY SURVEYOR Title DEPUTY



County Surveyor's Comment _____

FUSCOE ENGINEERING, INC.
LAND SURVEYOR: THOMAS EARL PROPST, P.L.S. 6098

SEE CORNER
RECORD NO. 2002-2058



MONUMENT NOTES:

- ▲ SPIKE AND WASHER STAMPED "LS 6098"
- LEAD, NAIL AND TAG STAMPED "LS 6098"