

CORNER RECORD

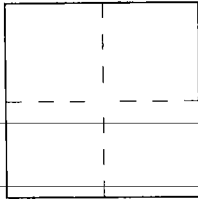
Document Number 2004-1659

City of UNINCORPORATED

County of ORANGE

California

Brief Legal Description TIES FOR TRACT 15619



CORNER TYPE

Government Corner ☐ Control ☒
 Meander ☐ Property ☐
 Rancho ☐ Other ☐

Date of Survey FEBRUARY 5, 2004

COORDINATES (Optional)

N. _____
 E. _____
 Zone _____ NAD27 ☐ NAD83 ☐
 NAD83 Epoch _____
 Elev. _____
 Vert. Datum: NGVD29 ☐ NAVD88 ☐
 Meas. Units: Metric ☐ Imperial ☐
 U.S. Survey foot ☐

Corner _____ Left as found ☐ Found and tagged ☐ Established ☒ Reestablished ☐ Rebuilt ☐

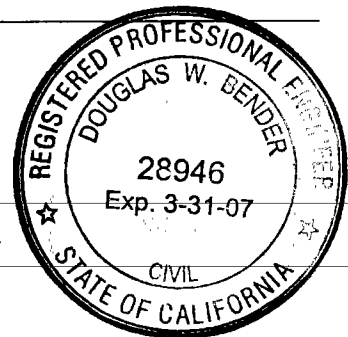
Identification and type of corner found; Evidence used to identify or procedure used to establish or reestablish the corner:
SET SPIKE AND WASHER STAMPED "R.C.E. 28946"

A description of the physical condition of the monument as found and as set or reset: _____

SURVEYOR'S STATEMENT

This Corner Record was prepared by me or under my direction in conformance with the Land Surveyor's Act on 10/4/04

Signed [Signature] L.S. or R.C.E. No. 28946



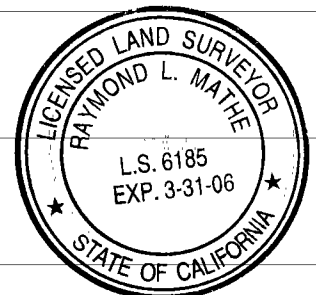
COUNTY SURVEYOR'S STATEMENT

This Corner Record was received 10/13/04

and examined and filed 11-01-04

Signed [Signature] L.S. or R.C.E. No. 6185

Title "COUNTY SURVEYOR"

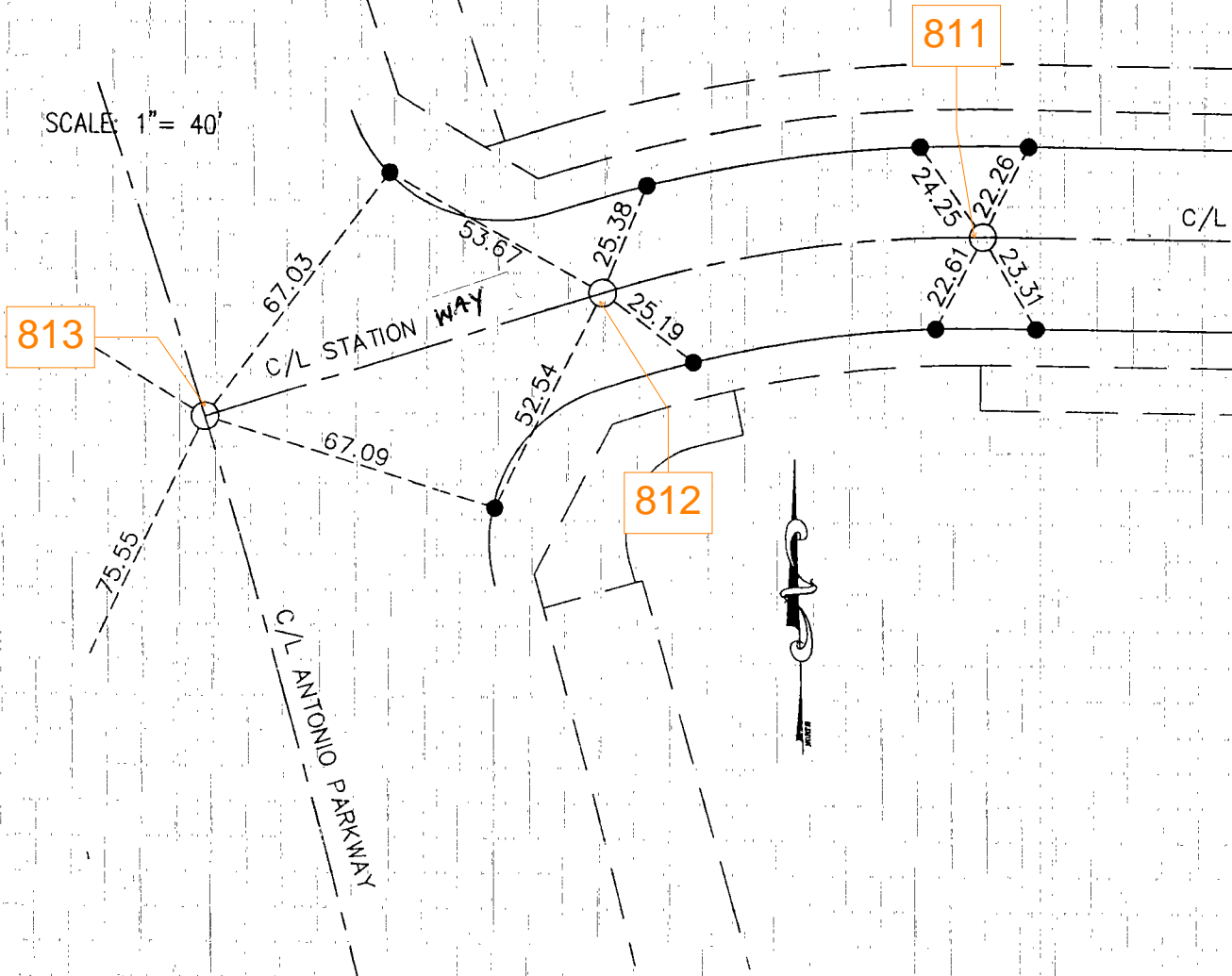


County Surveyor's Comment _____

CENTERLINE TIE NOTES FOR TRACT NO. 15619

DOUGLAS BENDER & ASSOCIATES FEBRUARY, 2004

SCALE: 1" = 40'



MONUMENT NOTES:

- INDICATES SET LEAD, TACK & TAG "RCE 28946" UNLESS OTHERWISE NOTED
- INDICATES SET SPIKE & WASHER STAMPED "RCE 28946" UNLESS OTHERWISE NOTED