

CORNER RECORD

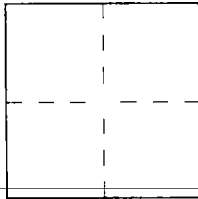
City of UNINCORPORATED

Document Number 2004-1660

County of ORANGE

California

Brief Legal Description TIES FOR TRACT 15619



CORNER TYPE

Government Corner ☐ Control ☒
Meander ☐ Property ☐
Rancho ☐ Other ☐

Date of Survey FEBRUARY 5, 2004

COORDINATES (Optional)

N. _____
E. _____
Zone _____ NAD27 ☐ NAD83 ☐
NAD83 Epoch _____
Elev. _____
Vert. Datum: NGVD29 ☐ NAVD88 ☐
Meas. Units: Metric ☐ Imperial ☐
U.S. Survey foot ☐

Corner — Left as found ☐ Found and tagged ☐ Established ☒ Reestablished ☐ Rebuilt ☐

Identification and type of corner found; Evidence used to identify or procedure used to establish or reestablish the corner:

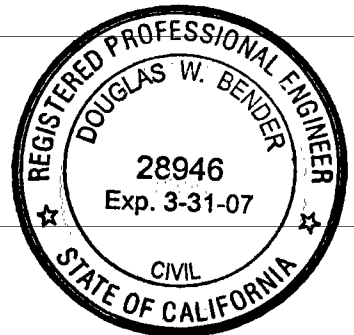
SET SPIKE AND WASHER STAMPED "R.C.E. 28946"

A description of the physical condition of the monument as found and as set or reset: _____

SURVEYOR'S STATEMENT

This Corner Record was prepared by me or under my direction in conformance with the Land Surveyor's Act on 10/7/04

Signed [Signature] L.S. or R.C.E. No. 28946



COUNTY SURVEYOR'S STATEMENT

This Corner Record was received 10/13/04
and examined and filed 11-01-04

Signed [Signature] (L.S.) or R.C.E. No. 6185

Title "COUNTY SURVEYOR"

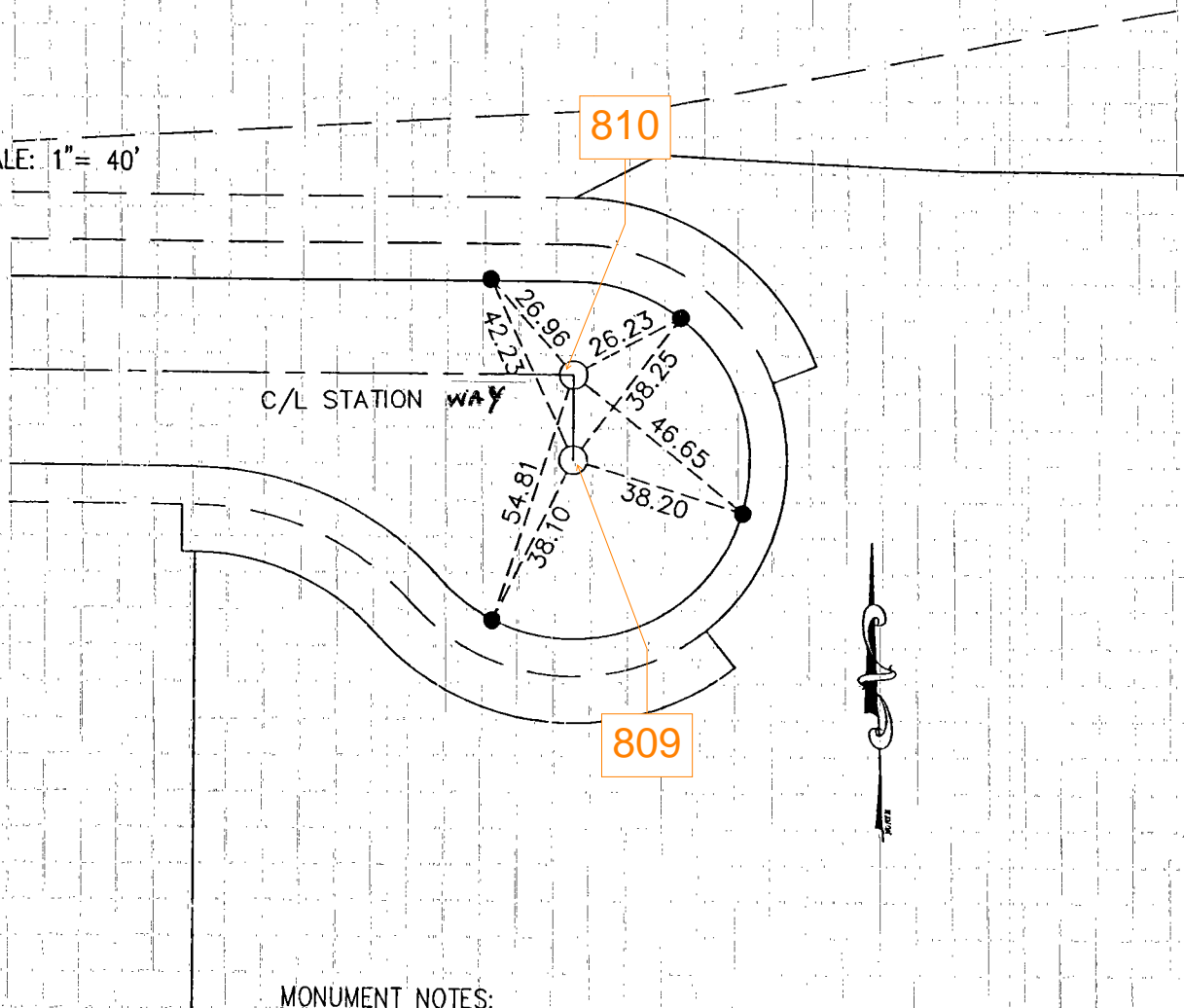


County Surveyor's Comment _____

CENTERLINE TIE NOTES FOR TRACT NO. 15619

DOUGLAS BENDER & ASSOCIATES FEBRUARY, 2004

SCALE: 1" = 40'



MONUMENT NOTES:

- INDICATES SET LEAD, TACK & TAG "RCE 28946"
UNLESS OTHERWISE NOTED
- INDICATES SET SPIKE & WASHER STAMPED "RCE 28946"
UNLESS OTHERWISE NOTED