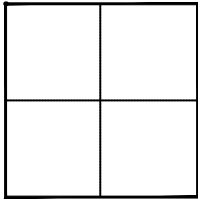


CORNER RECORD

Agency Index _____

Document Number 2020-1643City of UNINCORPORATED TERRITORYCounty of ORANGE, CaliforniaBrief Legal Description AT THE INTERSECTION OF ANTONIO PKWY CROWN VALLEY PKWY**CORNER TYPE**

Government Corner ☐ Control ☐
Meander ☐ Property ☐
Rancho ☐ Other ☒

Date of Survey MAY 11, 2020**COORDINATES (Optional)**

N. _____ E. _____
Elevation _____
Units Metric ☐ U.S. Survey Foot ☒
Horizontal Datum _____
Zone _____ Epoch Date _____
Vertical Datum _____

☐ Complies with Public Resources Code §§8801-8819
☐ Complies with Public Resources Code §§8890-8902

PLS Act Ref: ☐ 8765(d) ☒ 8771 ☐ 8773 ☐ Other: _____

Corner/
Monument: ☐ Left as found ☐ Established ☐ Rebuilt ☐ Pre-Construction
☐ Found and tagged ☒ Reestablished ☐ Referenced ☒ Post-Construction

Narrative of corner identified and monument as found, set, reset, replaced, or removed:

☒ See sheet #2 for description (s):**NOTES:**

THE PURPOSE OF THIS RECORD IS TO DOCUMENT THE PERPETUATION OF FOUND MONUMENT(S) PURSUANT TO THE PLS ACT SECTION 8771. NO CLAIM IS MADE AS TO THE RELATIONSHIP OF THE POINTS SHOWN HEREON TO TRUE BOUNDARY LOCATIONS. RIGHT OF WAY, PARCEL, OR LOT LINES, OR ANY OTHER DATA RELATED TO DELINEATION OF PROPERTY RIGHTS ARE DISPLAYED FOR GRAPHICAL REPRESENTATION ONLY.


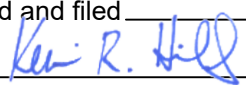
BEARINGS SHOWN HEREON ARE ASSUMED AND ARE DISPLAYED FOR ANGULAR RELATIONSHIP ONLY.

MEASURED DISTANCES SHOWN HEREON ARE GRID DISTANCES. TO OBTAIN A GROUND DISTANCE, MULTIPLY A GRID DISTANCE BY 1.00004484.

RECORD DISTANCES SHOWN HEREON ARE AS THEY APPEAR ON THE DOCUMENT OF RECORD. DISTANCES MAY BE EITHER GRID OR GROUND, AS PER SAID RECORD.

SURVEYOR'S STATEMENT

This Corner Record was prepared by me or under my direction in conformance with
the Professional Land Surveyors' Act on June 10, 2020

Signed  (P.L.S.) or R.C.E. No. 8036**COUNTY SURVEYOR'S STATEMENT**This Corner Record was received JUNE 10, 2020and examined and filed JUNE 15, 2020Signed  P.L.S. or R.C.E. No. 6617Title COUNTY SURVEYOR

County Surveyor's Comment _____

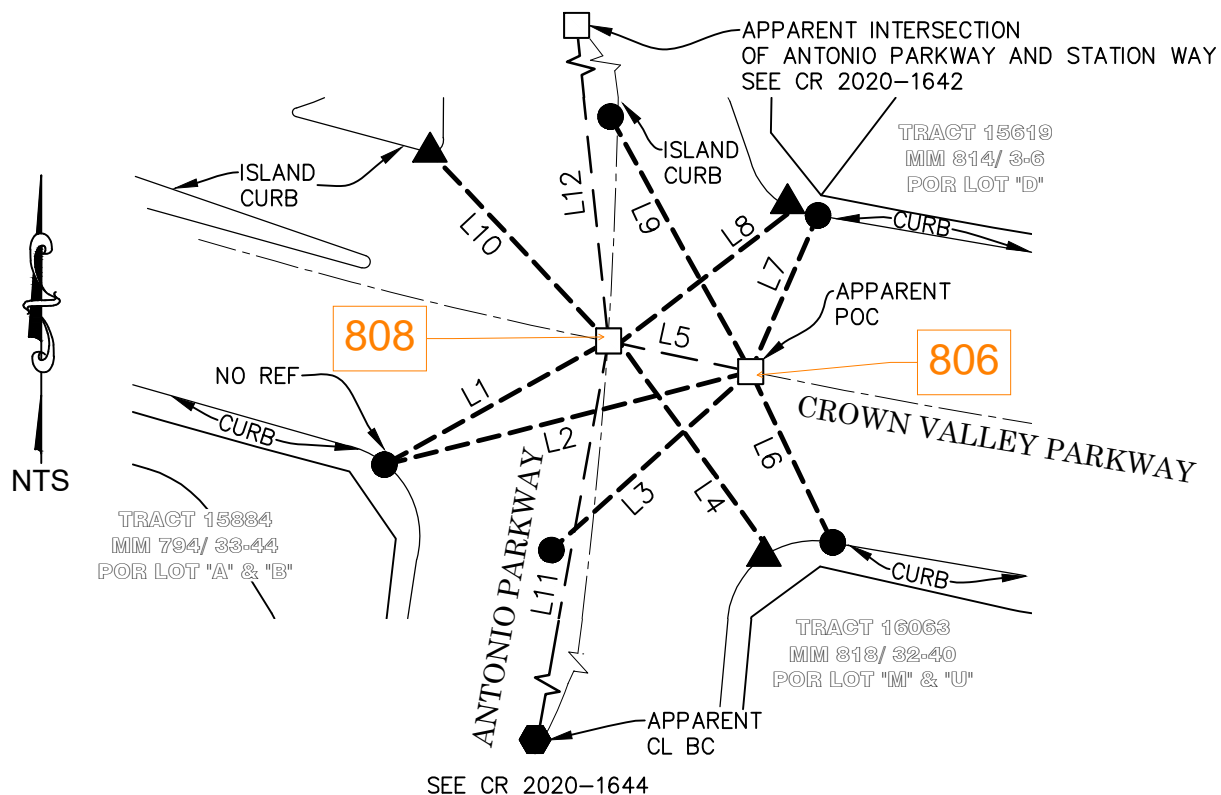
POST-CONST. CORNER RECORD

REFERENCES:

R1 CORNER RECORD 2019-0956
 R2 CORNER RECORD 2001-0383
 R3 CORNER RECORD 2004-1655
 R4 RSB 177/1-11

LEGEND:

— — — REFERENCE LINE 1 MEASUREMENT
 BETWEEN MONUMENTS
 - - - REFERENCE LINE 2 APPARENT CL
 - - - REFERENCE LINE 3 TIE LINES
 OCS ORANGE COUNTY SURVEYOR
 SS STAINLESS STEEL



| LINE TABLE | | | |
|------------|--------------------|---------------------|-----|
| LINE # | MEAS & REC BEARING | MEAS & REC DISTANCE | REF |
| L1 | N61°06'59"E | 106.73' | R1 |
| L2 | N75°45'21"E | 157.59' | R1 |
| L3 | N48°10'22"E | 111.61' | R1 |
| L4 | N35°50'18"W | 110.66' | R1 |
| L5 (CHORD) | N77°50'22"W | 60.65' | R1 |
| L6 | N25°37'27"W | 78.96' | R1 |

| LINE TABLE | | | |
|-------------|--------------------|---------------------|-----|
| LINE # | MEAS & REC BEARING | MEAS & REC DISTANCE | REF |
| L7 | N23°17'44"E | 70.82' | R1 |
| L8 | N52°28'16"E | 94.08' | R1 |
| L9 | N28°50'33"W | 121.30' | R1 |
| L10 | N43°18'18"W | 108.50' | R1 |
| L11 (CHORD) | N10°05'46"E | 461.34' | R1 |
| L12 (CHORD) | N05°46'51"W | 696.20' | R1 |

MONUMENT NOTES

- SET PUN SPK & 1-1/2" SS WSHR STMPD "OCS", DN 0.1' IN AC, PER TIES SHOWN HEREON
- FD LEAD, BRASS NAIL & 3/4" TAG STMPD "RCE 28946", PER R1 & R3, ON T.C.
- ▲ FD LEAD, BRASS NAIL & 3/4" TAG STMPD "LS 5557 TIE POINT", PER R1 & R2, ON T.C.
- ⬢ FD SCRIBED '+' ON 2" BRASS DISK, PER R1 & R4, DN. 1.9' IN OCS WELL