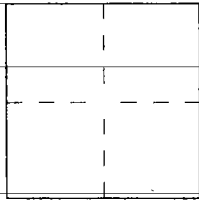


# CORNER RECORD

Document Number 2004-1655City of UNINCORPORATEDCounty of ORANGE, CaliforniaBrief Legal Description TIES FOR TRACT 15619

## CORNER TYPE

Government Corner ☐ Control ☒  
Meander ☐ Property ☐  
Rancho ☐ Other ☐

Date of Survey FEBRUARY 5, 2004

## COORDINATES (Optional)

N. \_\_\_\_\_  
E. \_\_\_\_\_  
Zone \_\_\_\_\_ NAD27 ☐ NAD83 ☐  
NAD83 Epoch \_\_\_\_\_  
Elev. \_\_\_\_\_  
Vert. Datum: NGVD29 ☐ NAVD88 ☐  
Meas. Units: Metric ☐ Imperial ☐  
U.S. Survey foot ☐

Corner — Left as found ☐ Found and tagged ☐ Established ☒ Reestablished ☐ Rebuilt ☐

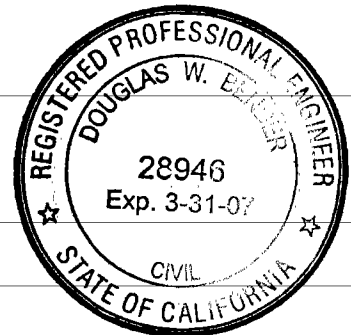
Identification and type of corner found; Evidence used to identify or procedure used to establish or reestablish the corner:

SET SPIKE AND WASHER STAMPED "R.C.E. 28946"

A description of the physical condition of the monument as found and as set or reset: \_\_\_\_\_

## SURVEYOR'S STATEMENT

This Corner Record was prepared by me or under my direction in conformance with  
the Land Surveyor's Act on 10/4/04

Signed [Signature] L.S. or R.C.E. No. 28946

## COUNTY SURVEYOR'S STATEMENT

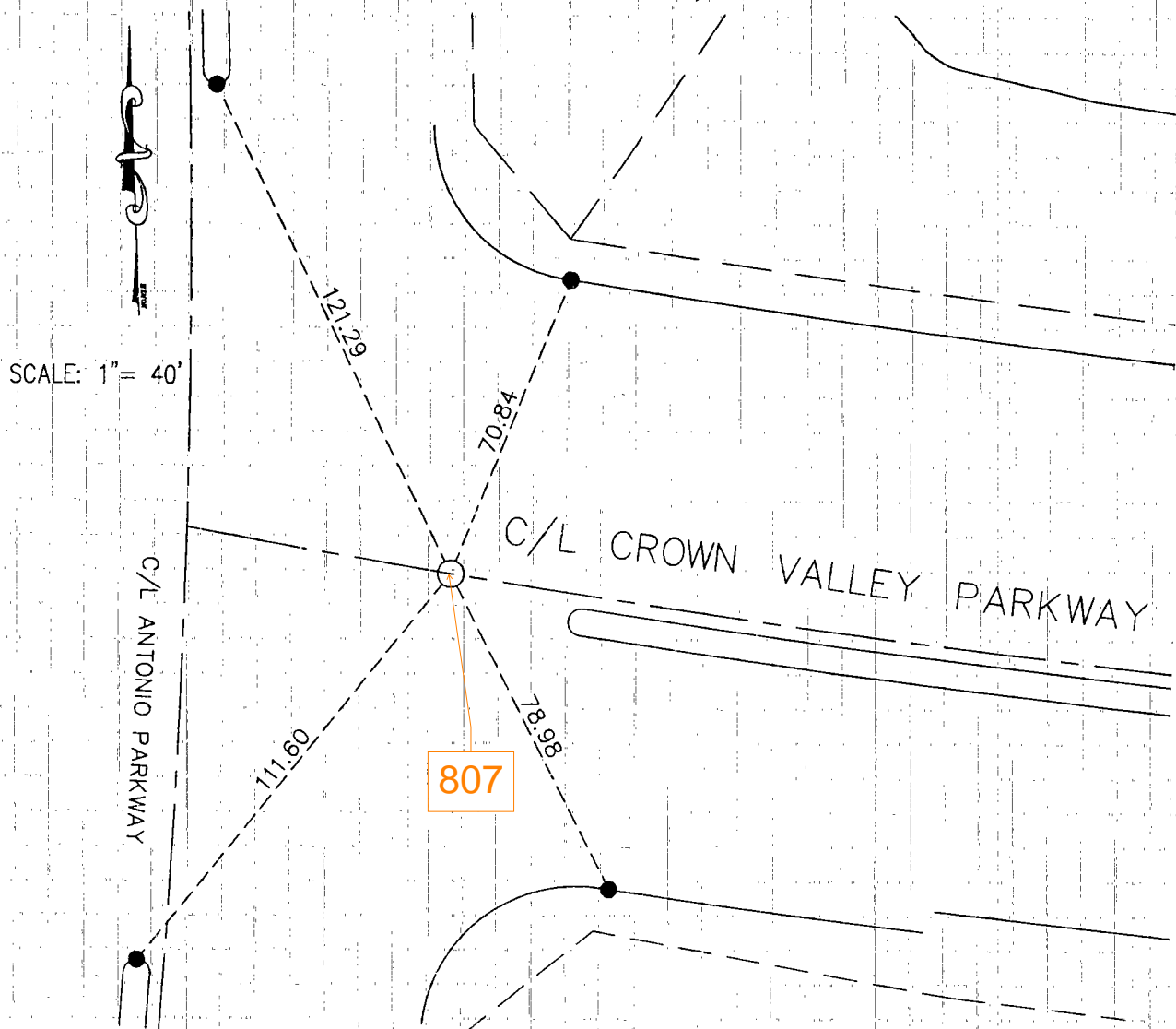
This Corner Record was received 10/13/04  
and examined and filed 11-01-04

Signed [Signature] L.S. or R.C.E. No. 6185Title "COUNTY SURVEYOR"

County Surveyor's Comment \_\_\_\_\_

# CENTERLINE TIE NOTES FOR TRACT NO. 15619

DOUGLAS BENDER & ASSOCIATES FEBRUARY, 2004



## MONUMENT NOTES:

- INDICATES SET LEAD, TACK & TAG "RCE 28946"  
UNLESS OTHERWISE NOTED
- INDICATES SET SPIKE & WASHER STAMPED "RCE 28946"  
UNLESS OTHERWISE NOTED