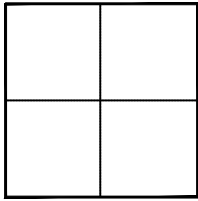


# CORNER RECORD

Agency Index \_\_\_\_\_

Document Number \_\_\_\_\_

2020-1280

City of UNINCORPORATED TERRITORYCounty of ORANGE, CaliforniaBrief Legal Description THE INT. OF CROWN VLY PKWY, SPORTS PARK ENT., & CECIL PASTURE RD.**CORNER TYPE**

Government Corner ☐ Control ☐  
Meander ☐ Property ☐  
Rancho ☐ Other ☒

Date of Survey October 26, 2019**COORDINATES (Optional)**

N. \_\_\_\_\_ E. \_\_\_\_\_  
Elevation \_\_\_\_\_  
Units Metric ☐ U.S. Survey Foot ☒  
Horizontal Datum \_\_\_\_\_  
Zone \_\_\_\_\_ Epoch Date \_\_\_\_\_  
Vertical Datum \_\_\_\_\_

☐ Complies with Public Resources Code §§8801-8819  
☐ Complies with Public Resources Code §§8890-8902

PLS Act Ref: ☐ 8765(d) ☒ 8771 ☐ 8773 ☐ Other: \_\_\_\_\_

Corner/Monument: ☐ Left as found ☐ Established ☐ Rebuilt ☐ Pre-Construction  
☐ Found and tagged ☒ Reestablished ☐ Referenced ☒ Post-Construction

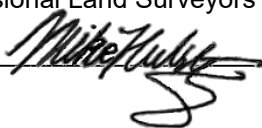

Narrative of corner identified and monument as found, set, reset, replaced, or removed:

☒ NOTES:

THE PURPOSE OF THIS RECORD IS TO DOCUMENT THE PERPETUATION OF FOUND MONUMENT(S) PURSUANT TO THE PLS ACT SECTION 8771. NO CLAIM IS MADE AS TO THE RELATIONSHIP OF THE POINTS SHOWN HEREON TO TRUE BOUNDARY LOCATIONS. BEARINGS SHOWN HEREON ARE ASSUMED AND ARE DISPLAYED FOR ANGULAR RELATIONSHIP ONLY. RIGHT OF WAY, AND STREET INFO SHOWN HEREON ARE FOR GRAPHICAL REPRESENTATION ONLY.

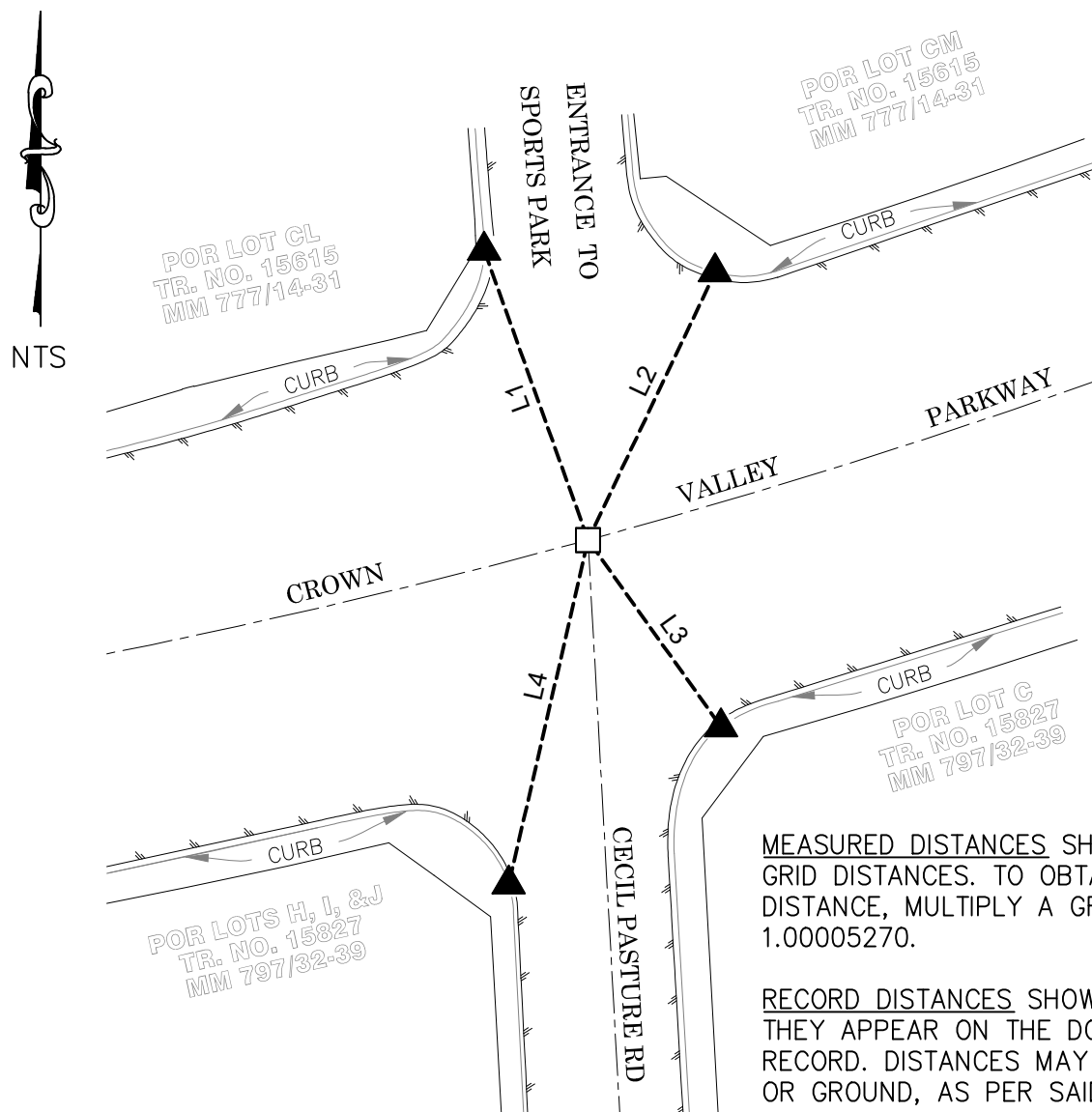
**SURVEYOR'S STATEMENT**

This Corner Record was prepared by me or under my direction in conformance with the Professional Land Surveyors' Act on April 28, 2020

Signed  (P.L.S.) or R.C.E. No. 8036**COUNTY SURVEYOR'S STATEMENT**This Corner Record was received APRIL 28, 2020and examined and filed APRIL 28, 2020Signed  P.L.S. or R.C.E. No. 6617Title COUNTY SURVEYOR

County Surveyor's Comment \_\_\_\_\_

## POST-CONSTRUCTION CORNER RECORD



MEASURED DISTANCES SHOWN HEREON ARE GRID DISTANCES. TO OBTAIN A GROUND DISTANCE, MULTIPLY A GRID DISTANCE BY 1.00005270.

RECORD DISTANCES SHOWN HEREON ARE AS THEY APPEAR ON THE DOCUMENT OF RECORD. DISTANCES MAY BE EITHER GRID OR GROUND, AS PER SAID RECORD.

LINE TABLE

LINE #	MEAS & REC BEARING	MEAS & REC DISTANCE	REF
L1	N19°43'51"W	99.52'	R1
L2	N25°20'58"E	95.92'	R1
L3	N35°24'50"W	74.19'	R1
L4	N12°58'04"E	114.25'	R1

LEGEND:

- - - REFERENCE LINE 1: APPARENT CL  
 - - - REFERENCE LINE 2: TIE LINES  
 - - - REFERENCE LINE 3: EDGE OF PVMT  
 OCS ORANGE COUNTY SURVEYOR  
 SS STAINLESS STEEL

MONUMENT NOTES:

- SET PUN SPK & 1-1/2" SS WSHR STMPD "OCS", FLUSH IN AC, PER TIES SHOWN HEREON  
 ▲ FD LEAD, TACK, & 3/4" BRASS TAG STMPD "RCE 28946", ON TOP OF CURB, PER R1 & R2

RECORD REFERENCES:

- R1 CORNER RECORD 2019-2746  
 R2 CORNER RECORD 2001-1245