

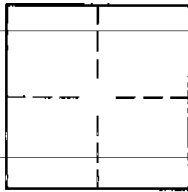
# CORNER RECORD

Document Number 2002-538

City of UNINCORPORATED TERRITORY

County of ORANGE, California

Brief Legal Description TRACT 15622, M.M. 784/47-50



## CORNER TYPE

Government corner ☐ Control ☐  
Meander ☐ Property ☐  
Rancho ☐ Other ☒  
Date of Survey SEP. 2001

## COORDINATES (OPTIONAL)

N. \_\_\_\_\_  
E. \_\_\_\_\_  
Zone \_\_\_\_\_ NAD27 ☐ NAD83 ☐  
NAD83 Epoch \_\_\_\_\_  
Elev. \_\_\_\_\_  
Vert. Datum: ☐ NGVD29 ☐ NAVD88 ☐  
Meas. Units: ☐ Metric ☐ Imperial ☐

Corner— Left as found ☐ Found and tagged ☐ Established ☒ Reestablished ☐ Rebuilt ☐

Identification and type of corner found: Evidence used to identify or procedure used to establish or reestablish the corner:

SEE PAGE 2

A description of the physical condition of the monument as found and as set or reset:

SEE PAGE 2

## SURVEYOR'S STATEMENT

This Corner Record was prepared by me or under my direction in conformance with the Land Surveyors' Act on 3/22/02

Signed [Signature] P.E.S. or R.C.E. Number 28946



## COUNTY SURVEYOR'S STATEMENT

This Corner Record was received

APR 11 2002

and examined and filed

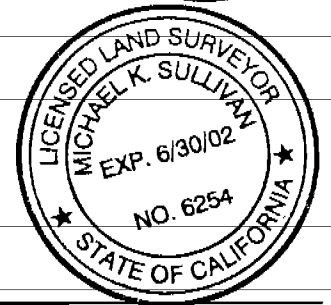
MAY 15 2002

Signed [Signature] P.E.S. or R.C.E. Number 6254

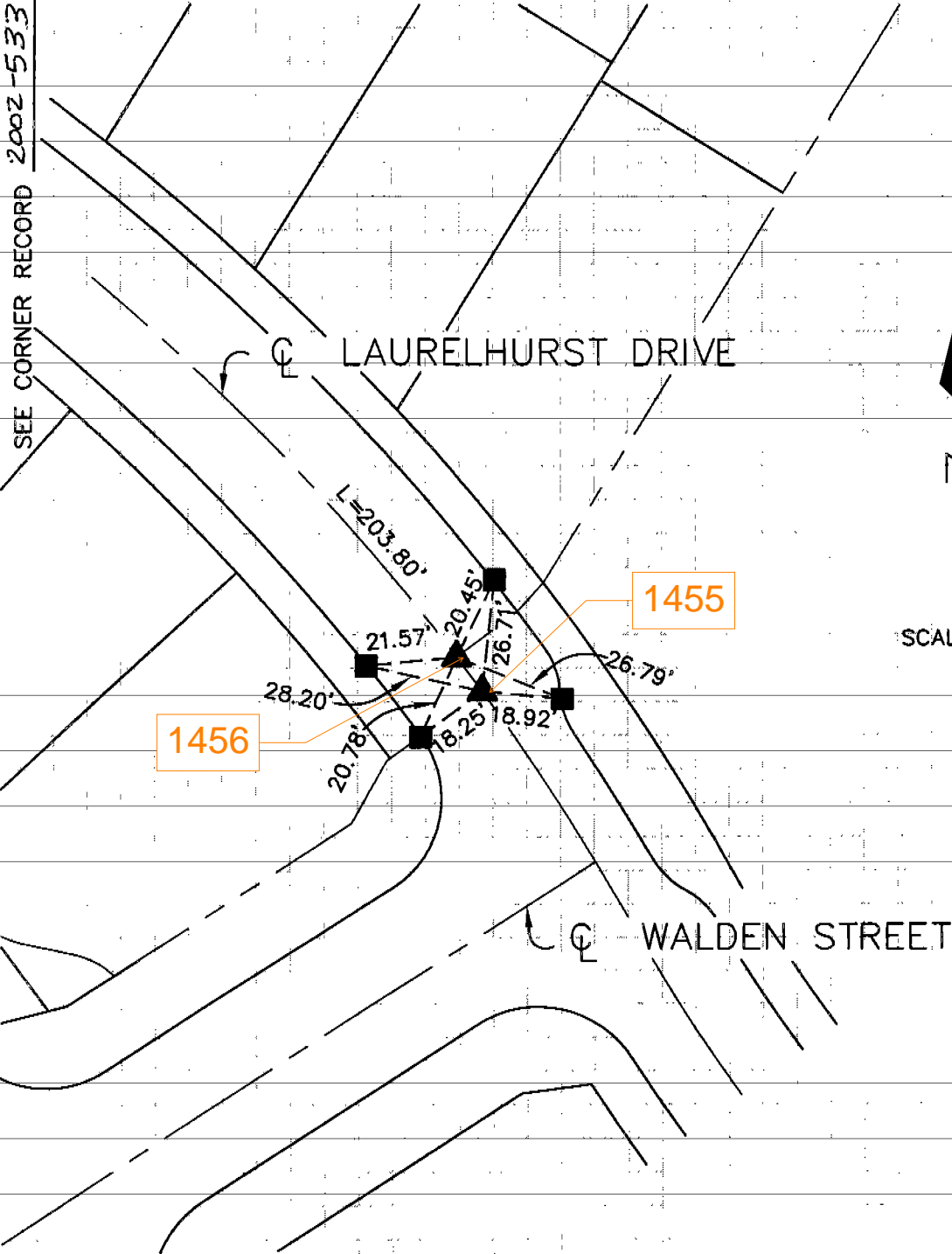
DEPUTY COUNTY SURVEYOR

Title \_\_\_\_\_

County Surveyor's Comment \_\_\_\_\_



CENTERLINE TIES FOR:  
**TRACT NO. 15622**  
 IN THE UNINCORPORATED TERRITORY OF THE  
 COUNTY OF ORANGE, STATE OF CALIFORNIA



SCALE: 1"=40'

■ ALL TIES ARE LEAD AND TAGS "RCE 28946"  
 SET IN TOP OF CURB.

▲ ALL CENTERLINE MONUMENTS ARE PUNCHED  
 SPIKES WITH WASHER STAMPED "RCE 28946",  
 UNLESS OTHERWISE NOTED.