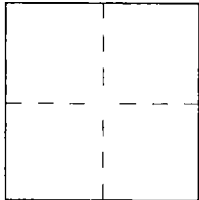


CORNER RECORD

Document Number 2005-1554
City of UNINCORPORATED County of ORANGE, California

Brief Legal Description TIES FOR TRACT 16244



CORNER TYPE

Government Corner ☐ Control ☒
Meander ☐ Property ☐
Rancho ☐ Other ☐

Date of Survey DECEMBER 12, 2005

COORDINATES (Optional)

N. _____
E. _____
Zone _____ NAD27 ☐ NAD83 ☐
NAD83 Epoch _____
Elev. _____
Vert. Datum: NGVD29 ☐ NAVD88 ☐
Meas. Units: Metric ☐ Imperial ☐
U.S. Survey foot ☐

Corner — Left as found ☐ Found and tagged ☐ Established ☒ Reestablished ☐ Rebuilt ☐

Identification and type of corner found; Evidence used to identify or procedure used to establish or reestablish the corner:
SET LEAD TACK AND TAG, R.C.E. 28946, FOR CENTERLINE TIES OF
CENTERLINE POINTS IN TRACT 16244 ON ABYSSINIAN WAY

A description of the physical condition of the monument as found and as set or reset: _____

SURVEYOR'S STATEMENT

This Corner Record was prepared by me or under my direction in conformance with
the Land Surveyor's Act on 1/3/06

Signed [Signature] L.S. or R.C.E. No. 28946



COUNTY SURVEYOR'S STATEMENT

This Corner Record was received DEC 27 2005

and examined and filed FEB 17 2006

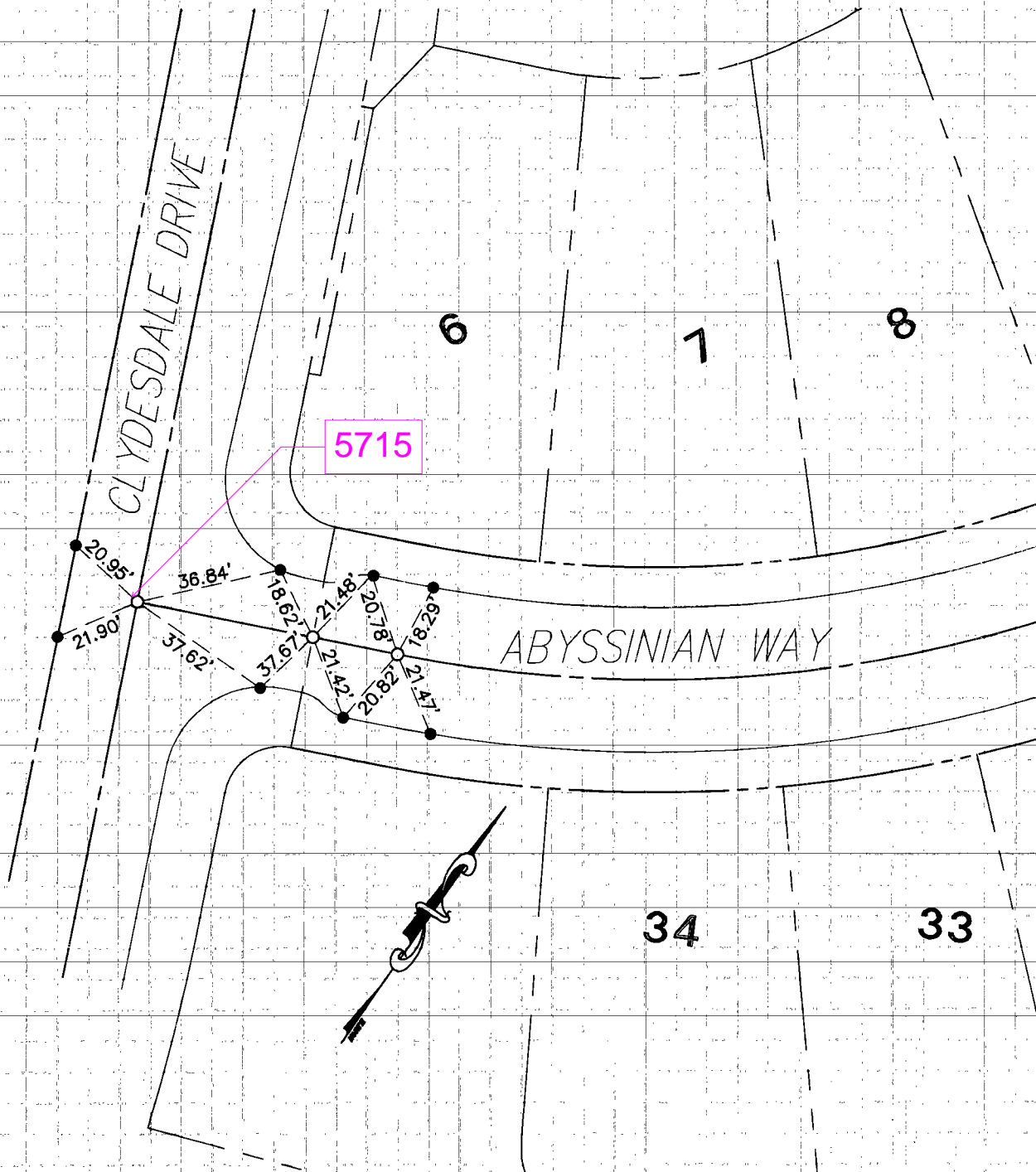
Signed [Signature] L.S. or R.C.E. No. 7212

Title DEPUTY COUNTY SURVEYOR



County Surveyor's Comment _____

CENTERLINE TIE NOTES FOR TRACT NO. 16244
DOUGLAS BENDER & ASSOCIATES DECEMBER 12, 2005



MONUMENT NOTES

- INDICATES SET LEAD, TACK & TAG "RCE 28946"
IN TOP OF CURB UNLESS OTHERWISE NOTED
- INDICATES FOUND SPIKE & WASHER "RCE 28946"