



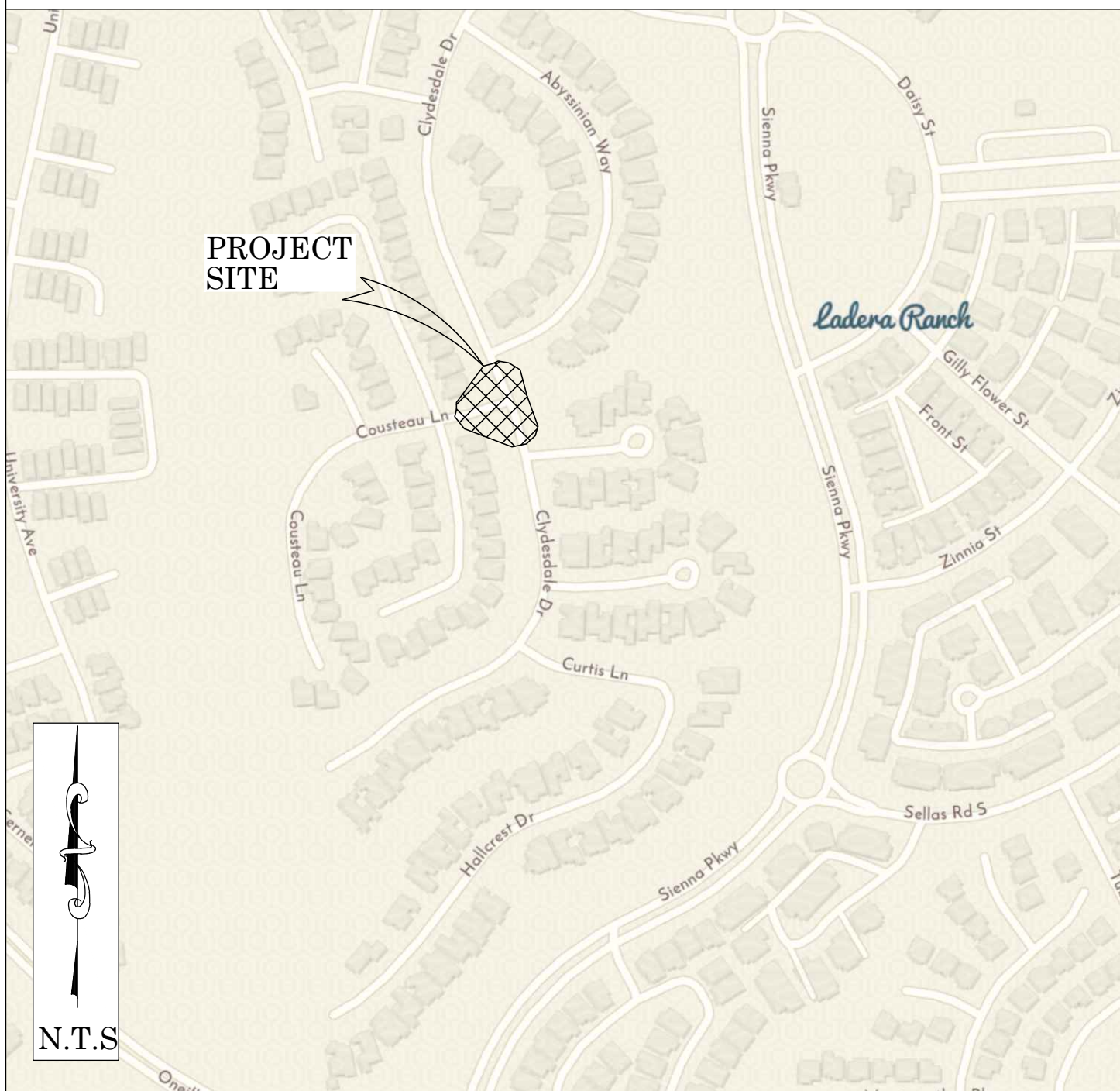
OC PUBLIC WORKS DEPARTMENT

CLYDESDALE AND COUSTEAU TOPO

CURB RAMP IMPROVEMENTS



LOCATION MAP



SENIOR LAND SURVEYOR'S CERTIFICATE:

THIS MAP CORRECTLY REPRESENTS A SURVEY MADE BY ME OR UNDER MY DIRECTION IN CONFORMANCE WITH REQUIREMENTS OF THE PROFESSIONAL LAND SURVEYORS' ACT; THIS 18 DAY OF DECEMBER, 2024.

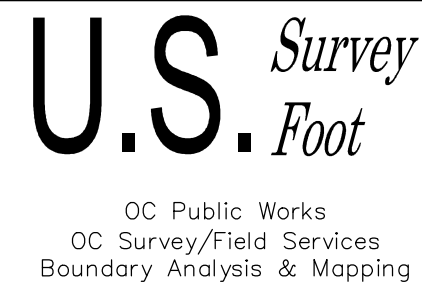
DocuSigned by:
Jesom Moreno
JESOM MORENO, PLS. SENIOR LAND SURVEYOR



SENIOR LAND SURVEYOR'S CERTIFICATE:

THIS MAP HAS BEEN EXAMINED IN ACCORDANCE WITH THE PROFESSIONAL LAND SURVEYORS' ACT; THIS 18 DAY OF DECEMBER, 2024.

Signed by:
David Bush
DAVID BUSH, PLS. SENIOR LAND SURVEYOR



N.T.S.

NTS

NTS



BASIS OF BEARINGS

THE BASIS OF BEARINGS FOR THIS SURVEY IS BASED ON THE CALIFORNIA COORDINATE SYSTEM (CCS83), ZONE VI, NAD 83, OCS (2017.50) EPOCH ADJUSTMENT, AS DETERMINED LOCALLY BY A LINE BETWEEN CONTINUOUS GLOBAL POSITIONING STATIONS CGPS "SBCC" AND "TRAK" BEING NORTH 60°31'33" WEST AS DERIVED FROM THE COORDINATES PUBLISHED BY THE CALIFORNIA SPATIAL REFERENCE CENTER (CSRC) ALONG WITH DATA SHEETS ON FILE IN THE OFFICE OF THE ORANGE COUNTY SURVEYOR.

HORIZONTAL DATUM

COORDINATES SHOWN ARE BASED ON THE CALIFORNIA COORDINATE SYSTEM (CCS83), ZONE VI, NAD 83, OCS (2017.50) EPOCH ADJUSTMENT.

ALL DISTANCES SHOWN ARE GRID, UNLESS OTHERWISE NOTED. TO OBTAIN GROUND DISTANCES MULTIPLY GRID BY A COMBINED FACTOR OF 1.00005726.

THIS COMBINATION FACTOR WAS HELD AT: CP#5710
N: 2146362.463 E: 6138211.018 ELEVATION=493.73

ALL DISTANCES ARE BASED ON THE U.S. SURVEY FOOT.

VERTICAL DATUM

NAVD 1988 (O.C.S. 1995 ADJUSTMENT)

BENCHMARK: CALIFORNIA SPATIAL REFERENCE SYSTEM CONTINUOUSLY OPERATING GLOBAL POSITIONING STATION (CGPS) "SBCC"

ELEVATION (ORTHOMETRIC HEIGHT) 401.538 FT 122.389 M

GEOD12B

PER DATA SHEET ON FILE WITH THE CALIFORNIA SPATIAL REFERENCE CENTER (CSRC)

NOTES

THE SURVEY INFORMATION SHOWN HEREON IS TO BE USED FOR TOPOGRAPHIC RELATIONSHIPS ONLY AND IS NOT INTENDED FOR LAND ACQUISITION OR BOUNDARY PURPOSES.

SHEET INDEX

SHEET	NO.	DESCRIPTION
SHEET	1	TITLE SHEET
SHEET	2-3	BOUNDARY SHEETS
SHEETS	4	TOPOGRAPHIC MAP

PURPOSE OF SURVEY

THE PURPOSE OF THE SURVEY IS TO PROVIDE A TOPOGRAPHIC MAP AND RIGHT OF WAY ESTABLISHMENT FOR THIS PORTION OF ROADWAY.

TOPOGRAPHIC MAPPING PROJECT

		COUNTY OF ORANGE OC PUBLIC WORKS OC SURVEY/FIELD SERVICES/BOUNDARY ANALYSIS & MAPPING	
		CLYDESDALE AND COUSTEAU TOPO CURB RAMP IMPROVEMENTS	
		TITLE SHEET	
		PROJECT LIMITS: FROM THE INTERSECTION OF CLYDESDALE DRIVE AND COUSTEAU LANE TO THE FOLLOWING INTERSECTION NORTH, SOUTH, AND WEST	
		DATE OF SURVEY: 11/15/2024	BY: J. JOHNSON & CREW
		MAPPING	BY: P. MAGUIRE, PLS
		OFFICE CHECK	BY: J. MORENO, PLS
		FIELD CHECK	BY: J. JOHNSON & CREW
		SCALE: N.T.S.	W.O. #E03088
		FILE: #2425PW-ENG0004	FILE: CLYDESDALE DR-COUSTEAU LN_TOPO_2024.DWG
MARK	DATE	ITEM	
REVISIONS			
			SHEET NO. 1 of 5

ESTABLISHMENT NOTES

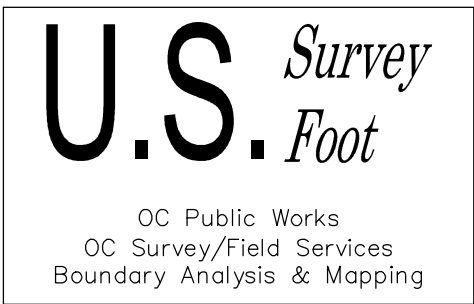
- ④
- ESTABLISHED THE CENTERLINE OF CLYDESDALE DRIVE PER R1 BY HOLDING MONUMENTS [1] AND [2] FOR DIRECTION AND RECORD DISTANCE OF 253.76' PER R2 N'LY FROM MONUMENT [1].
- ⑤
- ESTABLISHED THE CENTERLINE OF CLYDESDALE DRIVE PER R1 BY HOLDING TANGENCY FROM THE N'LY END OF ESTABLISHMENT ④ AND RECORD CURVE DATA PER R2.
- ⑥
- ESTABLISHED THE CENTERLINE OF CLYDESDALE DRIVE PER R4 BY HOLDING TANGENCY FROM THE N'LY END OF ESTABLISHMENT ⑤ TO A POINT PERPENDICULAR WITH MONUMENT [7].
- ⑦
- ESTABLISHED THE CENTERLINE OF BRYANT COURT PER R2 BY HOLDING A LINE BETWEEN MONUMENTS [8] AND [9].
- ⑧
- ESTABLISHED THE CENTERLINE OF BRYANT COURT PER R2 BY HOLDING A TANGENT CURVE W'LY FROM ESTABLISHMENT ⑥ TO THE INTERSECTION WITH ESTABLISHMENT NOTE ④.
- ⑨
- ESTABLISHED THE CENTERLINE OF ABYSSINIAN WAY PER R1 BY HOLDING A RECORD ANGLE NE'LY FROM ESTABLISHMENT ⑥ AT MONUMENT [6].
- ⑩
- ESTABLISHED THE CENTERLINE OF COUSTEAU LANE PER R3 BY HOLDING A LINE BETWEEN MONUMENTS [4] AND [10].
- ⑪
- ESTABLISHED THE CENTERLINE OF CLYDESDALE DRIVE PER R4 BY HOLDING A TANGENT CURVE W'LY FROM ESTABLISHMENT NOTE ⑧ HOLDING RECORD RADIUS PER R3 AND RADIAL TO MONUMENT NOTE [3].
- ⑫
- ESTABLISHED THE CENTERLINE OF LA SALLE LANE PER R3 BY HOLDING A LINE BETWEEN MONUMENTS [11] AND [12].
- ⑬
- ESTABLISHED THE CENTERLINE OF LA SALLE LANE DRIVE PER R3 BY HOLDING A TANGENT CURVE N'LY FROM ESTABLISHMENT NOTE ⑪ HOLDING RECORD CURVE DATA PER R3.

REFERENCES

- (R1) = TRACT NO. 16244, MM 840/47–50
- (R2) = TRACT NO. 16246, MM 842/45–49
- (R3) = TRACT NO. 16245, MM 835/7–11
- (R4) = TRACT NO. 16235, MM 825/30–39
- (R10) = CORNER RECORD, C.R. 2005–0127
- (R11) = CORNER RECORD, C.R. 2005–0006
- (R12) = CORNER RECORD, C.R. 2005–1554
- (R13) = CORNER RECORD, C.R. 2004–1024
- (R14) = CORNER RECORD, C.R. 2005–0011
- (R15) = CORNER RECORD, C.R. 2005–0007
- (R16) = CORNER RECORD, C.R. 2015–0013
- (R20) = CERTIFICATE OF CORRECTION RECORDED 200500203980 O.R.

MONUMENT NOTES

- [1] FOUND BOAT SPIKE AND 1-1/2 INCH STAINLESS STEEL WASHER STAMPED PLS 5557 PER R10, ACCEPTED AS THE CENTERLINE EC OF CLYDESDALE DRIVE PER R2, FLUSH WITH ASPHALT.
- [2] FOUND BOAT SPIKE AND 1-1/2 INCH STAINLESS STEEL WASHER STAMPED PLS 5557 PER R10, ACCEPTED AS A POINT ALONG THE CENTERLINE OF CLYDESDALE DRIVE PER R2, N12°12'36"W 0.05' FROM THE INTERSECTION OF CLYDESDALE DRIVE AND BRYANT COURT, FLUSH WITH ASPHALT.
- [3] FOUND IRON PIPE WITH 3/4 INCH BRASS TAG STAMPED PLS 5557 PER R10, ACCEPTED AS A THE CENTERLINE BC OF CLYDESDALE DRIVE PER R2, DOWN 0.30' IN DIRT.
- [4] FOUND GEAR SPIKE AND 1-1/2 INCH BRASS WASHER STAMPED RCE 21687 PER R11, ACCEPTED AS THE CENTERLINE INTERSECTION OF CLYDESDALE DRIVE AND COUSTEAU LANE PER R3, FLUSH WITH ASPHALT.
- [5] FOUND BOAT SPIKE AND 1-1/2 INCH STAINLESS STEEL WASHER STAMPED PLS 5557 PER R12, ACCEPTED AS THE CENTERLINE EC OF CLYDESDALE DRIVE PER R4, FLUSH WITH ASPHALT.
- [6] FOUND GEAR SPIKE AND 1-1/2 INCH BRASS WASHER STAMPED RCE 28946 PER R13, ACCEPTED AS THE CENTERLINE INTERSECTION OF CLYDESDALE DRIVE AND ABYSSINIAN WAY PER R1, FLUSH WITH ASPHALT.
- [7] FOUND BOAT SPIKE AND 1-1/2 INCH STAINLESS STEEL WASHER STAMPED PLS 5557 PER R12, ACCEPTED AS THE CENTERLINE BC OF CLYDESDALE DRIVE PER R4, FLUSH WITH ASPHALT.
- [8] FOUND BOAT SPIKE AND 1-1/2 INCH BRASS WASHER STAMPED PLS 5557 NO REF, ACCEPTED AS A POINT ALONG THE CENTERLINE OF BRYANT COURT PER R2, FLUSH WITH ASPHALT.
- [9] FOUND BOAT SPIKE AND 1-1/2 INCH BRASS WASHER STAMPED PLS 5557 PER R10, ACCEPTED AS THE CENTERLINE BC OF BRYANT COURT PER R2, FLUSH WITH ASPHALT.
- [10] FOUND IRON PIPE WITH 1 INCH BRASS TAG STAMPED RCE 21687 PER R20, ACCEPTED AS THE CENTERLINE BC OF COUSTEAU LANE PER R3, DOWN 0.10' IN DIRT.
- [11] FOUND GEAR SPIKE AND 1-1/2 INCH BRASS WASHER STAMPED RCE 21687 PER R14, ACCEPTED AS THE CENTERLINE EC OF LA SALLE LANE PER R3, FLUSH WITH ASPHALT.
- [12] FOUND GEAR SPIKE AND 1-1/2 INCH BRASS WASHER STAMPED RCE 21687 PER R15, ACCEPTED AS THE CENTERLINE BC OF LA SALLE LANE PER R3, FLUSH WITH ASPHALT.
- [13] FOUND GEAR SPIKE AND 1-1/2 INCH BRASS WASHER STAMPED RCE 21687 PER R15, ACCEPTED AS A POINT ON RADIAL, N1°30'20"W 0.17' FROM THE CENTERLINE PRC OF LA SALLE LANE PER R3, FLUSH WITH ASPHALT.
- [14] FOUND GEAR SPIKE AND 1-1/2 INCH BRASS WASHER STAMPED RCE 21687 PER R15, N5°59'32"W 0.13' FROM THE CENTERLINE INTERSECTION OF LA SALLE LANE AND COUSTEAU LANE PER R3, FLUSH WITH ASPHALT.
- [15] FOUND DISTURBED, GEAR SPIKE AND 1-1/2 INCH BRASS WASHER STAMPED RCE 21687 PER R16, N32°47'10"W 0.06' FROM THE CENTERLINE PRC OF LA SALLE LANE PER R3, FLUSH WITH ASPHALT.



CURVE TABLE						
CURVE #	DELTA	RADIUS	LENGTH	RECORD DELTA	RECORD RADIUS	RECORD LENGTH
C1	1°29'54"	449.97'	11.77'	1°29'58" R3	500.00' R3	11.78' R3
C2	8°29'25"	449.97'	66.68'	8°29'21" R3	500.00' R3	66.67' R3
C3	1°24'27"	449.97'	11.05'	1°24'27" R2	500.00' R2	11.05' R2
C4	11°21'14"	499.97'	99.08'	11°23'46" R2	500.00' R2	99.01' R2
C5	9°15'29"	499.97'	80.79'	9°14'49" R3	500.00' R3	80.69' R3
C6	20°36'44"	499.97'	179.86'	20°35'32" R3	500.00' R3	179.70' R3
C7	15°23'19"	999.94'	268.57'	15°23'19" R3	1000.00' R3	268.58' R3
C8	9°52'02"	999.94'	172.20'	9°51'32" R3	1000.00' R3	172.08' R3
C9	5°31'17"	999.94'	96.36'	5°31'46" R3	1000.00' R3	96.51' R3
C10	9°50'38"	299.98'	51.54'	9°51'11" R3	300.00' R3	51.59' R3
C11	11°23'46"	449.97'	89.50'	11°23'46" R2	500.00' R2	89.50' R2

LINE TABLE			
LINE #	BEARING	MEASURED DISTANCE	RECORD DISTANCE
L1	N12°12'36"W	195.98'	196.03' R2
L2	N12°12'36"W	253.75'	253.76' R2
L3	N12°12'36"W	57.77'	57.73' R2
L4	N87°37'14"E	95.19'	-----
L5	N23°36'22"W	95.60'	95.54' R2
L6	N66°23'38"E	66.70'	66.70' R2
L7	N23°36'22"W	219.88'	219.91' R2
L8	N23°36'22"W	315.48'	315.45' R2
L9	N67°52'56"E	65.73'	65.81' R3
L10	N10°28'29"W	91.95'	91.88' R3

BASIS OF BEARINGS

THE BASIS OF BEARINGS FOR THIS SURVEY IS BASED ON THE CALIFORNIA COORDINATE SYSTEM (CCS83), ZONE VI, NAD 83, OCS (2017.50) EPOCH ADJUSTMENT, AS DETERMINED LOCALLY BY A LINE BETWEEN CONTINUOUS GLOBAL POSITIONING STATIONS CGPS "SBCC" AND "TRAK" BEING NORTH 60°31'33" WEST AS DERIVED FROM THE COORDINATES PUBLISHED BY THE CALIFORNIA SPATIAL REFERENCE CENTER (CSRC) ALONG WITH DATA SHEETS ON FILE IN THE OFFICE OF THE ORANGE COUNTY SURVEYOR.

HORIZONTAL DATUM

COORDINATES SHOWN ARE BASED ON THE CALIFORNIA COORDINATE SYSTEM (CCS83), ZONE VI, NAD 83, OCS (2017.50) EPOCH ADJUSTMENT.

ALL DISTANCES SHOWN ARE GRID, UNLESS OTHERWISE NOTED, TO OBTAIN GROUND DISTANCE MULTIPLY A GRID DISTANCE BY 1.00005726.

COMBINATION FACTOR WAS HELD AT POINT NUMBER 5710
N: 2146362.463 E: 6138211.018 ELEVATION=493.73

RECORD DISTANCES SHOWN HEREON ARE AS THEY APPEAR ON THE DOCUMENT OF RECORD. DISTANCES MAY BE EITHER GRID OR GROUND, AS PER SAID RECORD.

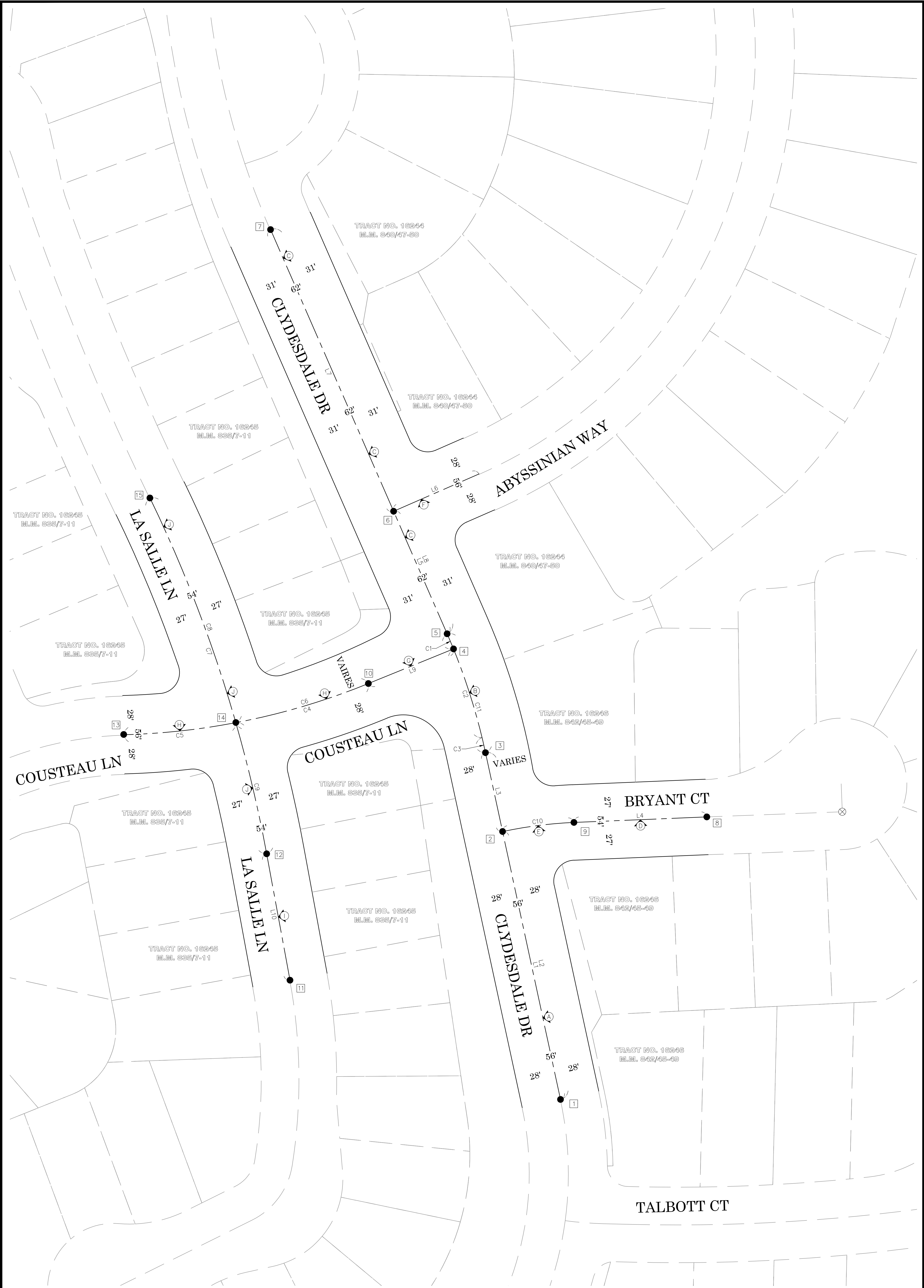
ALL DISTANCES ARE BASED ON THE U.S. SURVEY FOOT.

NOTES

ALL BOUNDARY LINES NOT SHOWN IN BOLD ARE FOR GRAPHICAL REPRESENTATION ONLY.

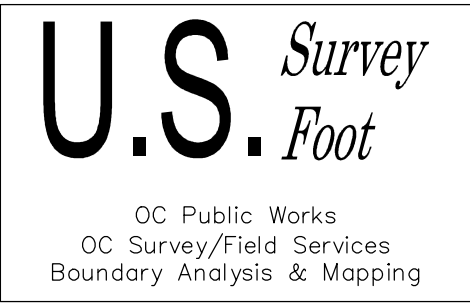
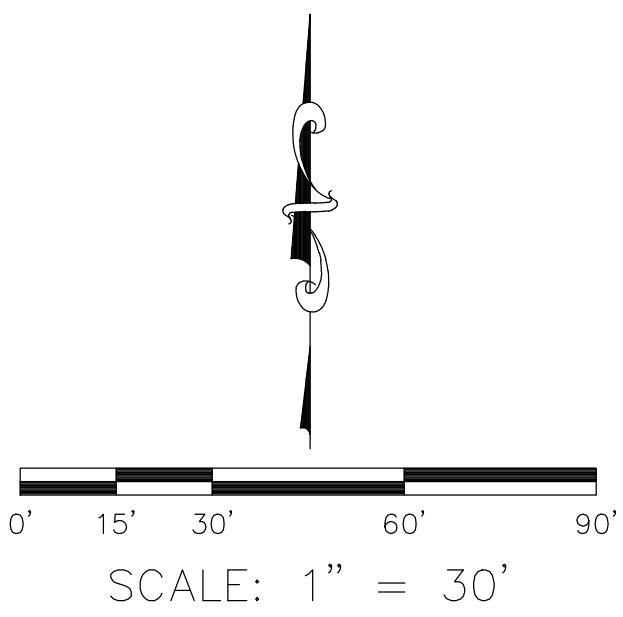
RECORD DISTANCES SHOWN HEREON ARE AS THEY APPEAR ON THE DOCUMENT OF RECORD. DISTANCES MAY BE EITHER GRID OR GROUND, AS PER SAID RECORD.

			COUNTY OF ORANGE OC PUBLIC WORKS OC SURVEY/FIELD SERVICES/BOUNDARY ANALYSIS & MAPPING				
			CLYDESDALE AND COUSTEAU TOPO CURB RAMP IMPROVEMENTS				
			BOUNDARY MAP				
			PROJECT LIMITS: FROM THE INTERSECTION OF CLYDESDALE DRIVE AND COUSTEAU LANE TO THE FOLLOWING INTERSECTION NORTH, SOUTH, AND WEST				
			DATE OF SURVEY: 11/15/2024		BY: J. JOHNSON & CREW		SHEET NO. 2 of 5
			MAPPING		BY: P. MAGUIRE, PLS		
			OFFICE CHECK		BY: J. MORENO, PLS		
			FIELD CHECK		BY: J. JOHNSON & CREW		
			SCALE: N/A		W.O. # ERO3088 FILE # 2425PW-ENG0004		
			MARK	DATE	ITEM	FILE: CLYDESDALE DR-COUSTEAU LN_BNDY_2024.DWG	
REVISIONS							

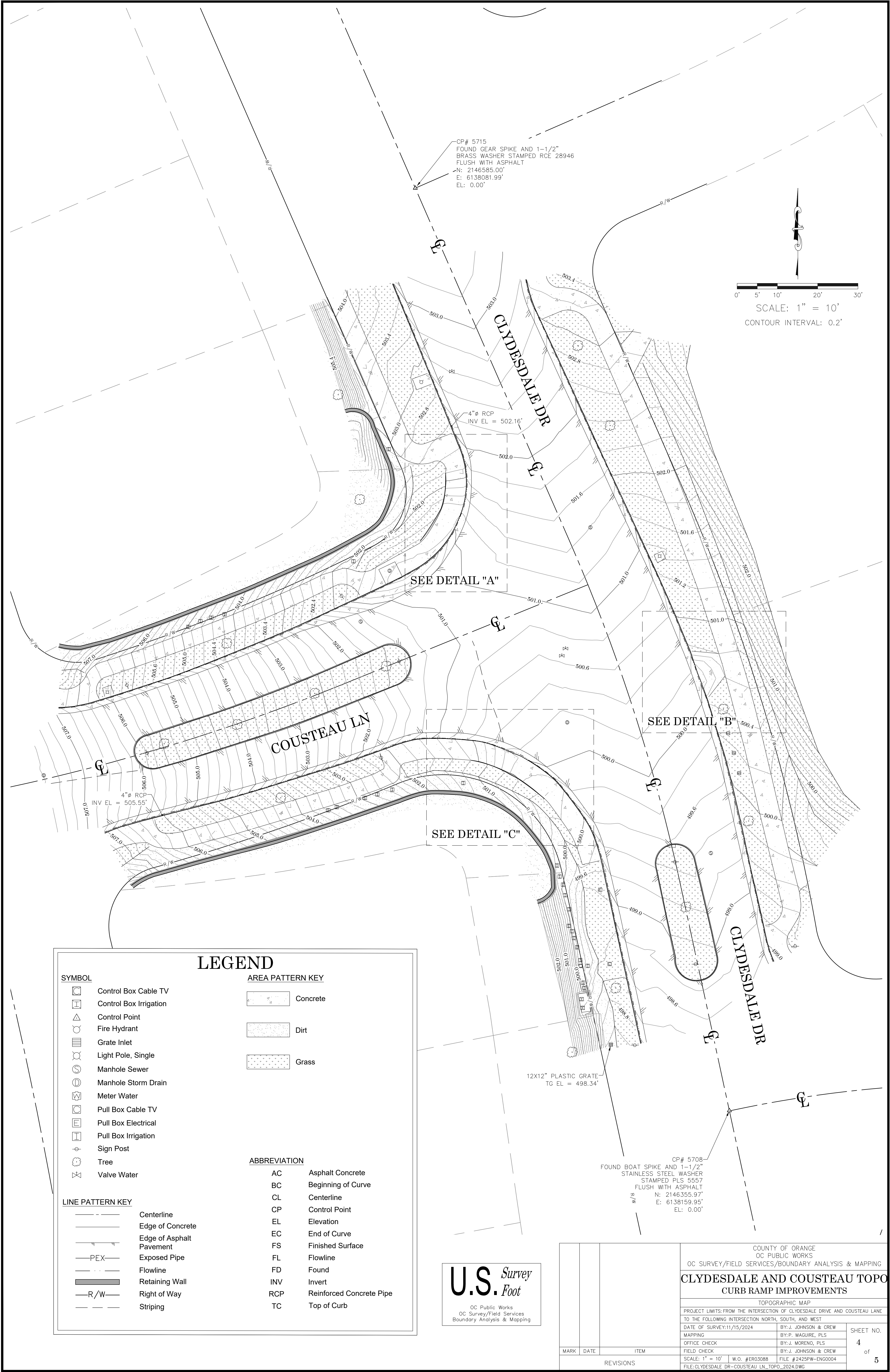


LEGEND

- FOUND MONUMENT AS NOTED
- ⊗ S.F.N. - SEARCHED, FOUND NOTHING
- R RECORD MAP



				COUNTY OF ORANGE OC PUBLIC WORKS OC SURVEY/FIELD SERVICES/BOUNDARY ANALYSIS & MAPPING	
				CLYDESDALE AND COUSTEAU TOPO CURB RAMP IMPROVEMENTS	
				BOUNDARY MAP	
				PROJECT LIMITS: FROM THE INTERSECTION OF CLYDESDALE DRIVE AND COUSTEAU LANE TO THE FOLLOWING INTERSECTION NORTH, SOUTH, AND WEST	
				DATE OF SURVEY: 11/15/2024	BY: J. JOHNSON & CREW
				MAPPING	BY: P. MAGUIRE, PLS
				OFFICE CHECK	BY: J. MORENO, PLS
				FIELD CHECK	BY: J. JOHNSON & CREW
				SCALE: 1" = 30'	W.O. #ER03088
				FILE: CLYDESDALE DR-COUSTEAU LN_BNDY_2024.DWG	FILE #2425PW-ENG0004
MARK		DATE		ITEM	
				REVISIONS	



		COUNTY OF ORANGE OC PUBLIC WORKS OC SURVEY/FIELD SERVICES/BOUNDARY ANALYSIS & MAPPING				
		CLYDESDALE AND COUSTEAU TOPO CURB RAMP IMPROVEMENTS				
		TOPOGRAPHIC MAP				
		PROJECT LIMITS: FROM THE INTERSECTION OF CLYDESDALE DRIVE AND COUSTEAU LANE TO THE FOLLOWING INTERSECTION NORTH, SOUTH, AND WEST				
		DATE OF SURVEY: 11/15/2024		BY: J. JOHNSON & CREW		
		MAPPING		BY: P. MAGUIRE, PLS		
		OFFICE CHECK		BY: J. MORENO, PLS		
		FIELD CHECK		BY: J. JOHNSON & CREW		
		SCALE: 1" = 10'		W.O. #ER03088	FILE #2425PW-ENG0004	
		FILE: CLYDESDALE_DR-COUSTEAU_LN_TOPO_2024.DWG				
MARK	DATE	ITEM		SHEET NO. 4 of 5		
REVISIONS						

