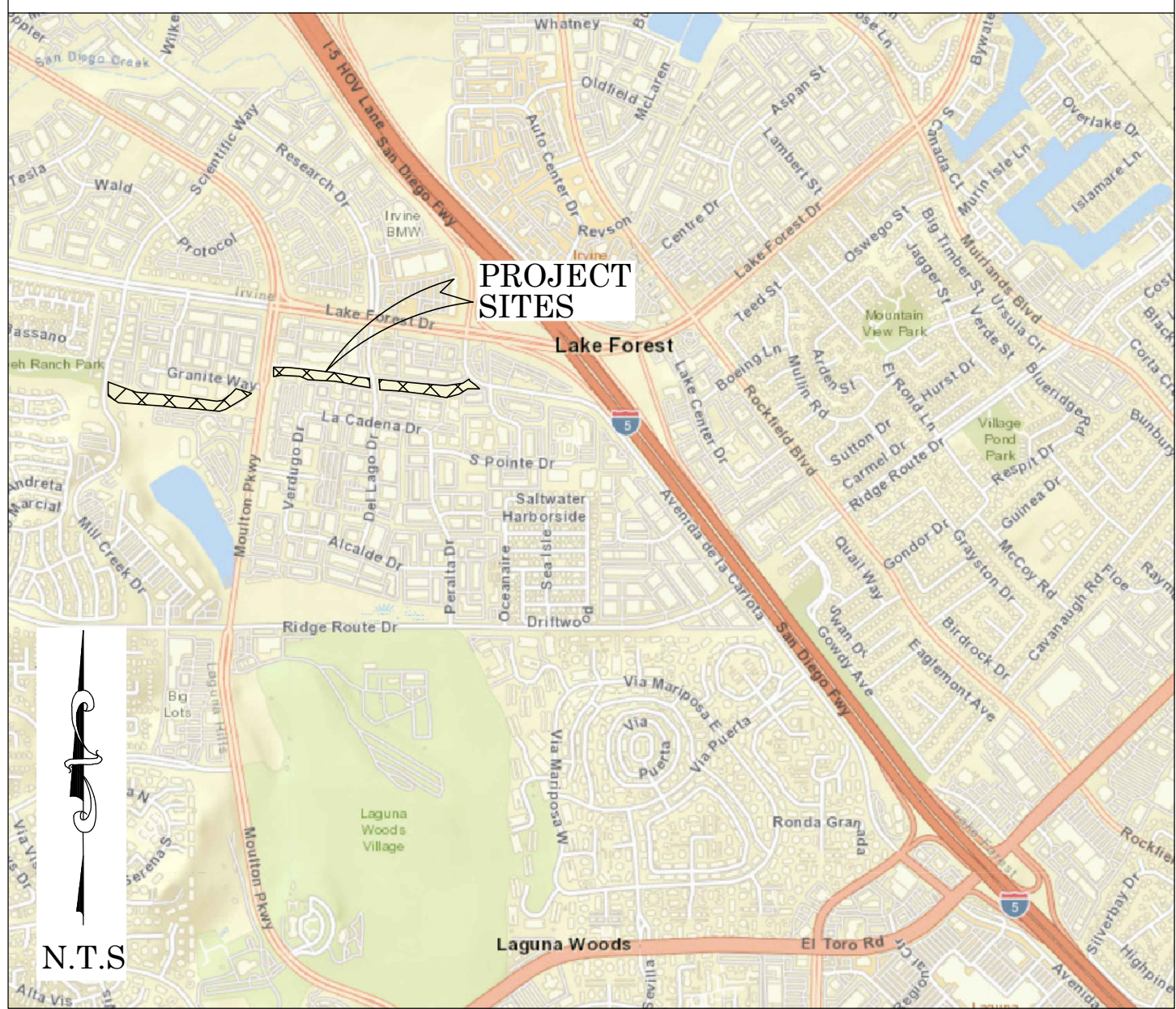




OC PUBLIC WORKS DEPARTMENT  
JAMES TREADAWAY, DIRECTOR OF PUBLIC WORKS  
KEVIN HILLS, COUNTY SURVEYOR  
CAÑADA CHANNEL (F23)  
REHABILITATION



LOCATION MAP



SENIOR LAND SURVEYOR'S CERTIFICATE:

THIS MAP CORRECTLY REPRESENTS A SURVEY MADE BY ME OR UNDER MY DIRECTION IN CONFORMANCE WITH REQUIREMENTS OF THE PROFESSIONAL LAND SURVEYOR'S ACT; THIS 8 DAY OF NOVEMBER, 2021.

ELLIOTT MEDINA, PLS. SENIOR LAND SURVEYOR



DEPUTY COUNTY SURVEYOR'S STATEMENT:

THIS MAP HAS BEEN EXAMINED IN ACCORDANCE WITH THE PROFESSIONAL LAND SURVEYOR'S ACT; THIS 8 DAY OF NOVEMBER, 2021.

WADE WEAVER, PLS. DEPUTY COUNTY SURVEYOR



N.T.S.



FOUND CGPS "MJPK"  
N: 2206067.91  
E: 6166204.47  
THIS IS A CONTINUOUS GPS STATION (CGPS) AND IS PART OF THE CALIFORNIA SPATIAL REFERENCE NETWORK (CSRN). FROM WHICH DATA CAN BE DOWNLOADED HERE: [HTTP://SOPACCSRC.UCSD.EDU/](http://SOPACCSRC.UCSD.EDU/).

FOUND CGPS "P471"  
N: 2150595.47  
E: 6168438.89  
THIS IS A CONTINUOUS GPS STATION (CGPS) AND IS PART OF THE CALIFORNIA SPATIAL REFERENCE NETWORK (CSRN). FROM WHICH DATA CAN BE DOWNLOADED HERE: [HTTP://SOPACCSRC.UCSD.EDU/](http://SOPACCSRC.UCSD.EDU/).

BASIS OF BEARINGS

THE BASIS OF BEARINGS FOR THIS SURVEY IS BASED ON THE CALIFORNIA COORDINATE SYSTEM (CCS83), ZONE VI, NAD 83, OCS (2017.50) EPOCH ADJUSTMENT, AS DETERMINED LOCALLY BY A LINE BETWEEN CONTINUOUS GLOBAL POSITIONING STATIONS CGPS STATIONS (P471) AND (MJPK) BEING NORTH 02°18'24" WEST AS DERIVED FROM THE COORDINATES PUBLISHED BY THE CALIFORNIA SPATIAL REFERENCE CENTER (CSRC) ALONG WITH DATA SHEETS ON FILE IN THE OFFICE OF THE ORANGE COUNTY SURVEYOR.

HORIZONTAL DATUM

COORDINATES SHOWN ARE BASED ON THE CALIFORNIA COORDINATE SYSTEM (CCS83), ZONE VI, NAD 83, OCS (2017.50) EPOCH ADJUSTMENT.  
ALL DISTANCES SHOWN ARE GRID, UNLESS OTHERWISE NOTED. TO OBTAIN GROUND DISTANCES MULTIPLY GRID BY A COMBINED FACTOR OF 1.00004014.  
THIS COMBINATION FACTOR WAS DERIVED BY AN AVERAGE OF TWO POINTS:

#600  
N: 2175139.32' E: 6113006.45' ELEVATION= 277.75'  
#604  
N: 2175089.28' E: 6109561.67' ELEVATION= 255.66'

VERTICAL DATUM

O.C.S. BM. 3JJ-1-78 ELEV. = 284.456' YEAR LEVELED: 2014  
NAVD 1988 (O.C.S. 1995 ADJUSTMENT)

DESCRIPTION: FOUND 3 3/4" OCS ALUMINUM BENCHMARK DISK STAMPED "3JJ-1-78", SET IN THE NORTHEASTERLY CORNER OF A CONCRETE DROP INLET. MONUMENT IS LOCATED IN THE SOUTHEASTERLY CORNER OF THE INTERSECTION OF AVENIDA DE LA CARLOTTA AND LAKE FOREST DRIVE, 85 FT. EASTERLY OF AVENIDA CARLOTTA AND ALONG THE SOUTHERLY CURB LINE OF LAKE FOREST. MONUMENT IS SET LEVEL WITH THE TOP OF THE CURB.

NOTES

THE SURVEY INFORMATION SHOWN HEREON IS TO BE USED FOR TOPOGRAPHIC RELATIONSHIPS ONLY AND IS NOT INTENDED FOR LAND ACQUISITION OR BOUNDARY PURPOSES.  
PARCELS SHOWN WITHOUT BEARING AND DISTANCES ARE FOR GRAPHICAL PURPOSES.

SHEET INDEX

SHEET	NO.	DESCRIPTION
1	1	TITLE SHEET
2	2	ALIGNMENT SHEET
3-8	3-8	BOUNDARY MAP
9-15	9-15	TOPOGRAPHIC MAP

BASIS OF STATIONING

THE SURVEY INFORMATION SHOWN HEREON IS TO BE USED FOR TOPOGRAPHIC RELATIONSHIPS ONLY AND IS NOT INTENDED FOR LAND ACQUISITION OR BOUNDARY PURPOSES.

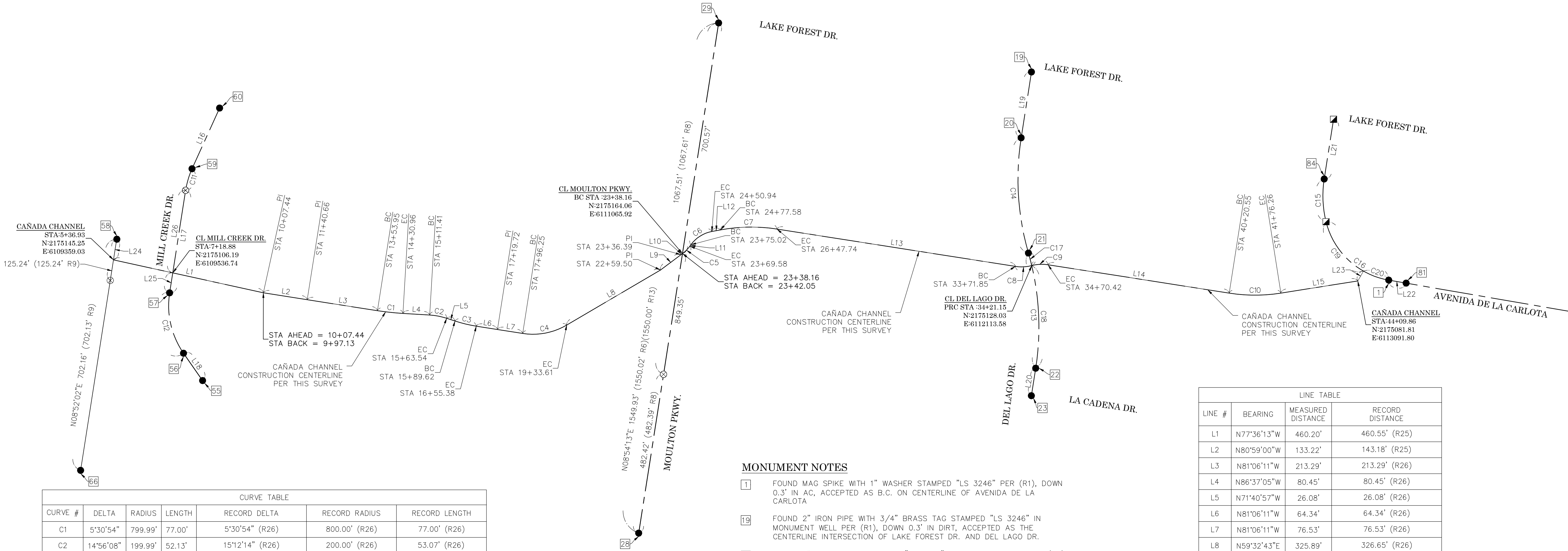
PURPOSE OF SURVEY

THE PURPOSE OF THE SURVEY IS TO PROVIDE A TOPOGRAPHIC MAP AND RIGHT OF WAY ESTABLISHMENT FOR THIS PORTION OF THE LA CAÑADA CHANNEL (F23).

TOPOGRAPHIC MAPPING PROJECT

		COUNTY OF ORANGE OC PUBLIC WORKS OC SURVEY/FIELD SERVICES/BOUNDARY ANALYSIS & MAPPING	
		CAÑADA CHANNEL (F23) REHABILITATION	
		TITLE SHEET	
		PROJECT LIMITS: FROM MILL CREEK RD. TO AVENIDA DE LA CARLOTTA	
		DATE OF SURVEY: 03/18/2021	BY: P. MAGUIRE & CREW
		MAPPING	BY: J. ISLAS
		OFFICE CHECK	BY: J. MORENO, PLS.
		FIELD CHECK	BY: P. MAGUIRE & CREW
		SCALE: N.T.S.	W.O. #EF21476
		FILE: #2021PW-OP0003	
		FILE: CAÑADA_CHANNEL_TOPO_2021.DWG	
MARK	DATE	ITEM	SHEET NO.
REVISIONS			1 of 15





CURVE TABLE						
CURVE #	DELTA	RADIUS	LENGTH	RECORD DELTA	RECORD RADIUS	RECORD LENGTH
C1	5°30'54"	799.99'	77.00'	5°30'54" (R26)	800.00' (R26)	77.00' (R26)
C2	14°56'08"	199.99'	52.13'	15°12'14" (R26)	200.00' (R26)	53.07' (R26)
C3	9°25'14"	399.99'	65.77'	9°41'20" (R26)	400.00' (R26)	67.64' (R26)
C4	39°21'06"	200.00'	137.36'	39°27'54" (R26)	200.00' (R26)	137.76' (R26)
C5	18°00'00"	100.00'	31.42'	18°00'00" (R27)	100.00' (R27)	31.42' (R27)
C6	43°30'00"	100.00'	75.92'	43°30'00" (R27)	100.00' (R27)	75.92' (R27)
C7	19°30'00"	499.98'	170.16'	19°30'00" (R27)	500.00' (R27)	170.17' (R27)
C8	23°32'17"	120.00'	49.30'	23°33'23" (R27)	120.00' (R27)	49.34' (R27)
C9	23°31'41"	120.00'	49.28'	23°33'23" (R27)	120.00' (R27)	49.34' (R27)
C10	17°50'38"	499.98'	155.71'	17°50'38" (R27)	500.00' (R27)	155.72' (R27)
C11	15°31'39"	249.99'	67.75'	15°31'39" (R9)	250.00' (R9)	67.75' (R9)
C12	43°40'29"	249.99'	190.56'	43°40'06" (R9)	250.00' (R9)	190.54' (R9)
C13	25°00'33"	799.97'	349.18'	25°00'33" (R1)	800.00' (R1)	349.19' (R1)
C14	25°00'54"	799.97'	349.26'	25°00'49" (R5)	800.00' (R5)	349.26' (R5)
C15	22°46'23"	324.99'	129.17'	22°46'24" (R22)	325.00' (R22)	129.18' (R22)
C16	66°21'22"	234.99'	272.15'	66°21'22" (R22)	235.00' (R22)	272.16' (R22)
C17	2°47'14"	799.97'	38.92'	N/A	N/A	N/A
C18	22°13'19"	799.97'	310.26'	N/A	N/A	N/A
C19	46°34'18"	234.99'	191.01'	N/A	N/A	N/A
C20	19°47'04"	234.99'	81.14'	N/A	N/A	N/A

LEGEND

- FOUND MONUMENT AS NOTED
- ⊗ S.F.N. – SEARCHED, NOTHING FOUND
- R RECORD MAP
- M MEASURED
- DID NOT SEARCHED DUE TO HEAVY TRAFFIC

REFERENCES

- (R1) = TRACT NO. 8861, M.M. 373/38–42
- (R4) = TRACT NO. 8862, M.M. 372/ 48–50
- (R5) = TRACT NO. 8863, M.M. 373/ 43–44
- (R6) = RECORD OF SURVEY 96–1064, R.S.B. 166/21–26
- (R8) = PARCEL MAP, P.M.B. 110/14–18
- (R9) = PARCEL MAP, P.M.B. 147/43–47
- (R13) = PARCEL MAP, P.M.B. 97/9–10
- (R22) = PARCEL MAP, P.M.B. 120/17–21
- (R24) = O.C.S. ALIGNMENT NOTE A/6–8, PGS. 6340–6379
- (R25) = F23–701–3
- (R26) = F23–701–2
- (R27) = F23–701–1

BASIS OF BEARINGS

THE BASIS OF BEARINGS FOR THIS SURVEY IS BASED ON THE CALIFORNIA COORDINATE SYSTEM (CCS83), ZONE VI, NAD 83, OCS (2017.50) EPOCH ADJUSTMENT, AS DETERMINED LOCALLY BY A LINE BETWEEN CONTINUOUS GLOBAL POSITIONING STATIONS CGPS STATIONS (P471) AND (MJPK) BEING NORTH 02°18'24" WEST AS DERIVED FROM THE COORDINATES PUBLISHED BY THE CALIFORNIA SPATIAL REFERENCE CENTER (CSRC) ALONG WITH DATA SHEETS ON FILE IN THE OFFICE OF THE ORANGE COUNTY SURVEYOR.

HORIZONTAL DATUM

COORDINATES SHOWN ARE BASED ON THE CALIFORNIA COORDINATE SYSTEM (CCS83), ZONE VI, NAD 83, OCS (2017.50) EPOCH ADJUSTMENT.

ALL DISTANCES SHOWN ARE GRID, UNLESS OTHERWISE NOTED, TO OBTAIN GROUND DISTANCES MULTIPLY GRID BY A COMBINED FACTOR OF 1.00004014.

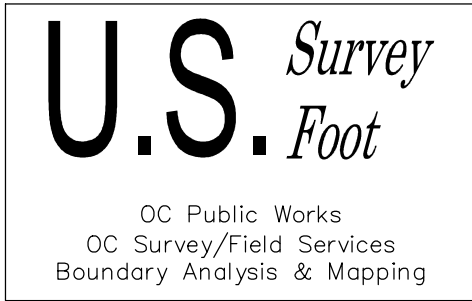
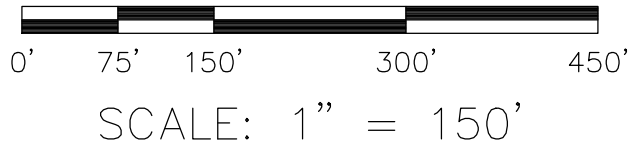
THIS COMBINATION FACTOR WAS DERIVED BY AN AVERAGE OF TWO POINTS:

#600  
N: 2175139.32' E: 6113006.45' ELEVATION= 277.75'  
#604  
N: 2175089.28' E: 6109561.67' ELEVATION= 255.66'

MONUMENT NOTES

- [1] FOUND MAG SPIKE WITH 1" WASHER STAMPED "LS 3246" PER (R1), DOWN 0.3' IN AC, ACCEPTED AS B.C. ON CENTERLINE OF AVENIDA DE LA CARLOTA
- [19] FOUND 2" IRON PIPE WITH 3/4" BRASS TAG STAMPED "LS 3246" IN MONUMENT WELL PER (R1), DOWN 0.3' IN DIRT, ACCEPTED AS THE CENTERLINE INTERSECTION OF LAKE FOREST DR. AND DEL LAGO DR.
- [20] FOUND 2" BRASS DISK STAMPED "LS 3246" IN MONUMENT WELL PER (R5), DOWN 1.4' IN AC, ACCEPTED AS B.C. ON CENTERLINE OF DEL LAGO DR.
- [21] FOUND 2" BRASS DISK STAMPED "LS 3246" IN MONUMENT WELL PER (R5), DOWN 1.4' IN AC, ACCEPTED AS P.R.C. OF CENTERLINE OF DEL LAGO DR.
- [22] FOUND 1 1/4" SPIKE WITH ILLEGIBLE WASHER PER (R3), DOWN 0.2' IN AC, S78°47'52"W 0.04' FROM CENTERLINE E.C. OF DEL LAGO DR.
- [23] FOUND 2" BRASS DISK STAMPED "LS 3246" IN MONUMENT WELL PER (R1), DOWN 1.4' IN AC, ACCEPTED AS CENTERLINE INTERSECTION OF DEL LAGO DR. AND LA CADENA DR.
- [28] FOUND 2" BRASS DISK STAMPED "LS 3246" PER (R4), DOWN 1.4' IN WELL MONUMENT, ACCEPTED AS THE CENTERLINE INTERSECTION OF MOULTON PKWY. AND EL PACIFICO DR.
- [29] FOUND 2 1/2" ALUMINUM DISK STAMPED "ORANGE COUNTY –77" PER (R6), DOWN 1.65' IN IN WELL MONUMENT, ACCEPTED AS THE CENTERLINE INTERSECTION OF LAKE FOREST DR. AND MOULTON PKWY.
- [55] FOUND BOAT SPIKE WITH NO WASHER BENT NORTHERLY NO REF., DOWN 0.2' IN AC, ACCEPT IT AS B.C. OF CENTERLINE OF MILL CREEK DR.
- [56] FOUND MAG SPIKE WITH 1–1/2" WASHER STAMPED "RCE 9757" PER (R9), DOWN 0.2' IN AC, ACCEPTED AS E.C. OF CENTERLINE OF MILL CREEK DR.
- [57] FOUND BOAT SPIKE WITH NO WASHER BENT NORTHERLY NO REF., DOWN 0.2' IN AC, ACCEPTED AS B.C. POINT ON THE CENTERLINE OF MILL CREEK DR.
- [58] FOUND 2" IRON PIPE, WITH CONCRETE PLUG NO REF., MEASURED CENTER MASS OF IRON PIPE, ACCEPTED IN LIEU OF 2" IRON PIPE WITH TAG STAMPED "RCE 20187" PER (R18), DOWN 1' IN DIRT, ACCEPTED AS THE SW CORNER OF PARCEL 1 PER (R18)
- [59] FOUND MAG SPIKE WITH 1 1/2" WASHER STAMPED "RCE" REST IS ILLEGIBLE IN LIEU OF SPIKE AND WASHER STAMPED "RCE 9757" PER (R9), DOWN 0.2' IN DIRT, ACCEPTED AS A POINT ON CENTERLINE OF MILL CREEK DR.
- [60] FOUND MAG SPIKE WITH 1 1/2" WASHER WITH ILLEGIBLE TAG IN LIEU OF SPIKE AND WASHER STAMPED "RCE 9757" PER (R9), DOWN 0.25' IN A.C., ACCEPTED AS AS E.C. POINT ON THE CENTERLINE OF MILL CREEK DR.
- [81] FOUND GEAR SPIKE WITH 1 1/2" WASHER STAMPED "LS 5778" NO REFERENCE, ACCEPTED AS THE CENTERLINE INTERSECTION OF AVENIDA DE LA CARLOTA AND PLAZA PONTE DR. PER (R22)
- [84] FOUND BOAT SPIKE WITH ILLEGIBLE WASHER IN LIEU OF P.K. NAIL PER (R22), DOWN 0.3' IN A.C., ACCEPTED AS BEING POINT ON TANGENT OF THE CENTERLINE OF AVENIDA DE CARLOTA, N08°54'11"E 0.09' FROM E.C.

LINE TABLE			
LINE #	BEARING	MEASURED DISTANCE	RECORD DISTANCE
L1	N77°36'13"W	460.20'	460.55' (R25)
L2	N80°59'00"W	133.22'	143.18' (R25)
L3	N81°06'11"W	213.29'	213.29' (R26)
L4	N86°37'05"W	80.45'	80.45' (R26)
L5	N71°40'57"W	26.08'	26.08' (R26)
L6	N81°06'11"W	64.34'	64.34' (R26)
L7	N81°06'11"W	76.53'	76.53' (R26)
L8	N59°32'43"E	325.89'	326.65' (R26)
L9	N53°17'04"E	76.89'	76.89' (R26)
L10	N53°54'13"E	5.66'	5.66' (R27)
L11	N35°54'13"E	5.44'	5.44' (R27)
L12	N79°24'13"E	26.64'	26.64' (R27)
L13	N81°05'40"W	724.11'	724.03' (R27)
L14	N81°06'16"W	550.12'	550.07' (R27)
L15	N81°03'06"E	233.60'	233.60' (R27)
L16	N24°23'31"E	200.03'	200.00' (R9)
L17	S08°51'52"W	311.42'	311.45' (R9)
L18	N34°48'36"W	100.00'	100.00' (R9)
L19	N08°54'09"E	200.05'	200.00' (R5)
L20	N08°53'48"E	83.41'	83.44' (R1)
L21	N08°54'11"E	181.48'	181.50' (R22)
L22	N80°13'48"W	52.91'	52.98' (R24)
L23	N29°35'17"E	34.12'	N/A
L24	S08°52'02"W	62.62'	N/A
L25	N08°51'40"E	60.73'	N/A
L26	N08°51'43"E	250.67'	N/A



			COUNTY OF ORANGE OC PUBLIC WORKS OC SURVEY/FIELD SERVICES/BOUNDARY ANALYSIS & MAPPING		
			CAÑADA CHANNEL (F23) REHABILITATION		
			ALIGNMENT		
			PROJECT LIMITS: FROM MILL CREEK DRIVE TO AVENIDA DE LA CARLOTA		
			DATE OF SURVEY: 04/30/2021	BY: P. MAGUIRE & CREW	SHEET NO.  2 of 15
			MAPPING	BY: F. DADASHI	
OFFICE CHECK	BY: J. MORENO, PLS				
FIELD CHECK	BY: P. MAGUIRE				
MARK	DATE	ITEM	SCALE: 1" = 50'	W.O. #EF21476	FILE #2021PW-OP0003
REVISIONS			FILE: CANADA_CHANNEL_ALIGNMENT_2021.DWG		

MONUMENT NOTES

- 1

FOUND MAG SPIKE WITH 1" WASHER STAMPED "LS 3246" PER (R1), DOWN 0.3' IN AC, ACCEPTED AS B.C. ON CENTERLINE OF AVENIDA DE LA CARLOTA
- 2

FOUND BOAT SPIKE WITH 1 1/4" ILLEGIBLE WASHER, ACCEPTED AS BOAT SPIKE WITH STAMPED "DIV OF HWYS" PER (R1), DOWN 0.3' IN AC, N08'23'35"E 0.18' (0.21' R1) FROM MONUMENT NOTE 1
- 3

FOUND BOAT SPIKE WITH 1 1/4" ILLEGIBLE WASHER, ACCEPTED AS BOAT SPIKE WITH WASHER STAMPED "LS 3246" PER (R2) PAGE 2391, DOWN 0.3' IN AC, ACCEPTED AS A POINT ON N'LY LINE OF (R1) S81'08'35"W 0.12' FROM INTERSECTION OF AVENIDA DE LA CARLOTA CENTERLINE AND TRACT LINE
- 4

FOUND 2" IRON PIPE WITH 3/4" BRASS TAG STAMPED "LS 3246" PER (R1), DOWN 1' IN DIRT, ACCEPTED AS A POINT ON N'LY LINE OF (R1), S81'08'35"W 0.20' FROM E'LY R/W LINE OF AVENIDA DE LA CARLOTA
- 5

FOUND 2 AND 1/2" IRON PIPE WITH 3/4" BRASS TAG STAMPED "LS 3246" PER (R1), DOWN 0.3' IN AC, ACCEPTED AS THE INTERSECTION OF N'LY LINE OF (R1), WITH SW'LY R/W LINE OF AVENIDA DE LA CARLOTA
- 6

FOUND 2" IRON PIPE WITH 3/4" BRASS TAG STAMPED "LS 3246" PER (R1), DOWN 1' IN DIRT, N86'37'24"W 0.18' FROM INTERSECTION OF N'LY R/W LINE OF CAÑADA CHANNEL WITH SW'LY R/W LINE OF AVENIDA DE LA CARLOTA
- 7

FOUND 2" IRON PIPE WITH 3/4" ILLEGIBLE BRASS TAG "PARTIALLY STAMPED 3" ACCEPTED FOR " LS 3246" PER (R1), DOWN 0.7' IN DIRT, ACCEPTED AS A POINT ON SW'LY R/W LINE OF AVENIDA DE LA CARLOTA, S65'08'22"E 0.21' FROM INTERSECTION OF S'LY R/W LINE OF CAÑADA CHANNEL WITH SW'LY R/W LINE OF AVENIDA DE LA CARLOTA
- 8

FOUND 2" IRON PIPE WITH 3/4" BRASS TAG STAMPED "LS 3246" PER (R1), DOWN 0.8' IN DIRT, ACCEPTED AS E.C. OF N'LY R/W OF CAÑADA CHANNEL
- 9

FOUND 2" IRON PIPE WITH 3/4" BRASS TAG STAMPED "LS 3246" PER (R1), DOWN 0.8' IN DIRT, ACCEPTED AS B.C. OF CURVE ON S'LY R/W OF CAÑADA CHANNEL
- 10

FOUND 2" IRON PIPE WITH 3/4" BRASS TAG STAMPED "LS 3246" PER (R1), DOWN 1.4' IN DIRT, ACCEPTED AS A POINT ON S'LY R/W OF CAÑADA CHANNEL
- 11

FOUND 2" IRON PIPE WITH 3/4" BRASS TAG STAMPED "LS 3246" PER (R1), DOWN 0.9' IN DIRT, N56'11'19"W 0.04' FROM ESTABLISHED E.C. OF S'LY R/W OF CAÑADA CHANNEL
- 12

FOUND 2" IRON PIPE WITH 3/4" BRASS TAG STAMPED "LS 3246" PER (R1), DOWN 0.7' IN DIRT, S08'53'44"W 0.08' FROM ESTABLISHED B.C. OF N'LY R/W OF CAÑADA CHANNEL
- 13

FOUND 2" IRON PIPE WITH 3/4" BRASS TAG STAMPED "LS 3246" PER (R1), DOWN 1.2' IN DIRT, N40'53'09"W 0.05' FROM ESTABLISHED B.C. OF S'LY R/W OF CAÑADA CHANNEL
- 14

FOUND 2" IRON PIPE WITH 3/4" BRASS TAG STAMPED "LS 3246" PER (R1), DOWN 1.3' IN DIRT, N08'53'44"E 0.10' FROM ESTABLISHED S'LY R/W OF CAÑADA CHANNEL
- 15

FOUND 2" IRON PIPE WITH 3/4" BRASS TAG STAMPED "LS 3246" PER (R1), DOWN 0.7' IN DIRT, S08'53'44"W 0.10' FROM ESTABLISHED N'LY R/W OF CAÑADA CHANNEL
- 16

FOUND 2" IRON PIPE WITH 3/4" BRASS TAG STAMPED "LS 3246" PER (R1), DOWN 0.7' IN DIRT, ACCEPTED AS A POINT ON N'LY R/W OF CAÑADA CHANNEL
- 17

FOUND 2" IRON PIPE WITH 3/4" BRASS TAG STAMPED "LS 3246" PER (R1), DOWN 0.7' IN DIRT, ACCEPTED AS INTERSECTION OF S'LY R/W OF CAÑADA CHANNEL AND W'LY LINE OF DEL LAGO DR.
- 18

FOUND 2" IRON PIPE WITH 3/4" BRASS TAG STAMPED "LS 3246" PER (R1), DOWN 0.7' IN DIRT, ACCEPTED AS A POINT ON N'LY R/W OF CAÑADA CHANNEL N81'06'16"W 0.05' FROM INTERSECTION OF N'LY R/W OF CAÑADA CHANNEL AND E'LY R/W OF DEL LAGO DR.
- 19

FOUND 2" IRON PIPE WITH 3/4" BRASS TAG STAMPED "LS 3246" IN MONUMENT WELL PER (R1), DOWN 0.3' IN DIRT, ACCEPTED AS THE CENTERLINE INTERSECTION OF LAKE FOREST DR. AND DEL LAGO DR.
- 20

FOUND 2" BRASS DISK STAMPED "LS 3246" IN MONUMENT WELL PER (R5), DOWN 1.4' IN AC, ACCEPTED AS B.C. ON CENTERLINE OF DEL LAGO DR.
- 21

FOUND 2" BRASS DISK STAMPED "LS 3246" IN MONUMENT WELL PER (R5), DOWN 1.4' IN AC, ACCEPTED AS P.R.C. OF CENTERLINE OF DEL LAGO DR.
- 22

FOUND 1 1/4" SPIKE WITH ILLEGIBLE WASHER PER (R3), DOWN 0.2' IN AC, S78'47'52"W 0.04' FROM CENTERLINE E.C. OF DEL LAGO DR.
- 23

FOUND 2" BRASS DISK STAMPED "LS 3246" IN MONUMENT WELL PER (R1), DOWN 1.4' IN AC, ACCEPTED AS CENTERLINE INTERSECTION OF DEL LAGO DR. AND LA CADENA DR.
- 24

FOUND 2" BRASS DISK STAMPED "LS 3246" IN MONUMENT WELL PER (R1), DOWN 1.2' IN AC, ACCEPTED AS THE CENTERLINE INTERSECTION OF LA CADENA DR. AND PERALTA DR.
- 25

FOUND 2" IRON PIPE WITH 3/4" BRASS TAG STAMPED "LS 3246" PER (R1), DOWN 0.4' IN DIRT, ACCEPTED AS A POINT ON W'LY R/W OF DEL LAGO DR. S32'05'57"E 0.11' FROM INTERSECTION OF W'LY R/W OF DEL LAGO DR. AND N'LY R/W OF CAÑADA CHANNEL
- 26

FOUND 2" IRON PIPE WITH 3/4" BRASS TAG STAMPED "LS 3246" PER (R1), DOWN 0.4' IN DIRT, ACCEPTED AS A POINT ON W'LY R/W OF DEL LAGO DR.
- 27

FOUND 2" IRON PIPE WITH 3/4" BRASS TAG STAMPED "LS 3246" PER (R1), DOWN 0.7' IN DIRT, ACCEPTED AS INTERSECTION OF E'LY R/W LINE OF AVENIDA DEL LAGO DR. WITH S'LY R/W LINE OF CAÑADA CHANNEL
- 28

FOUND 2" BRASS DISK STAMPED "LS 3246" PER (R4), DOWN 1.4' IN WELL MONUMENT, ACCEPTED AS THE CENTERLINE INTERSECTION OF MOULTON PKWY. AND EL PACIFICO DR.
- 29

FOUND 2 1/2" ALUMINUM DISK STAMPED "ORANGE COUNTY --77" PER (R6), DOWN 1.65' IN IN WELL MONUMENT, ACCEPTED AS THE CENTERLINE INTERSECTION OF LAKE FOREST DR. AND MOULTON PKWY.
- 30

FOUND 2" IRON PIPE WITH 3/4" BRASS TAG STAMPED "LS 3246" PER (R1), DOWN 0.7' IN DIRT, ACCEPTED AS A POINT ON S'LY R/W OF CAÑADA CHANNEL.

MONUMENT NOTES

- 31

FOUND 2" IRON PIPE WITH 3/4" BRASS TAG STAMPED "LS 3246" PER (R1), DOWN 0.6' IN DIRT, S30'27'29"W 0.08' FROM ESTABLISHED B.C. OF N'LY CAÑADA CHANNEL R/W
- 32

FOUND 2" IRON PIPE WITH 3/4" BRASS TAG STAMPED "LS 3246" PER (R1), DOWN 1.7' IN DIRT, N64'45'28"W 0.13' FROM INTERSECTION OF E'LY R/W LINE OF MOULTON PKWY. WITH S'LY LINE OF CAÑADA CHANNEL
- 33

FOUND 2" BRASS DISK STAMPED "LS 3246" IN MONUMENT WELL PER (R4), DOWN 1.6' IN AC, ACCEPTED AS THE CENTERLINE INTERSECTION OF LA CADENA DR. AND VERDUGO DR.
- 34

FOUND 2" IRON PIPE WITH 3/4" BRASS TAG STAMPED "LS 8070" PER (R7), DOWN 0.3' IN DIRT, ACCEPTED AS A POINT ON THE S'LY LINE OF PARCEL 9 PER (R8), S81'06'11"E 0.04' FROM W'LY R/W OF MOULTON PKWY.
- 35

FOUND 2" IRON PIPE WITH 3/4" BRASS TAG STAMPED "LS 3246" PER (R8), DOWN 0.9' IN DIRT, ACCEPTED AS THE SW CORNER OF PARCEL 9 PER (R8)
- 36

FOUND 1" IRON PIPE WITH PLASTIC CAP STAMPED "RCE 13737" PER (R7), DOWN 0.1' IN DIRT, N08'53'49"E 0.11' FROM ESTABLISHED S'LY R/W OF CAÑADA CHANNEL
- 37

FOUND 1" IRON PIPE WITH PLASTIC CAP STAMPED "RCE 13737" PER (R7), DOWN 0.4' IN DIRT, N08'53'49"E 0.14' FROM ESTABLISHED S'LY R/W OF CAÑADA CHANNEL
- 38

FOUND LEAD, TACK, AND 3/4" TAG STAMPED "LS 3246" PER (R8), FLUSH ON TOP OF BLOCK WALL, S12'26'26"W 0.04' FROM ESTABLISHED B.C. OF N'LY CAÑADA CHANNEL R/W
- 39

FOUND 2" IRON PIPE WITH 3/4" BRASS TAG STAMPED "LS 3246" PER (R8), DOWN 1.1' IN DIRT, S35'33'18"W 0.08' FROM ESTABLISHED B.C. OF N'LY CAÑADA CHANNEL R/W
- 40

FOUND LEAD, TACK, AND 3/4" TAG STAMPED "LS 3246" PER (R8), FLUSH ON TOP OF BLOCK WALL, ACCEPTED AS A POINT ON N'LY R/W OF CAÑADA CHANNEL
- 41

FOUND LEAD, TACK, AND 3/4" TAG STAMPED "LS 3246" PER (R8), FLUSH ON TOP OF BLOCK WALL, S08'53'49"W 0.06' FROM ESTABLISHED E.C. OF N'LY CAÑADA CHANNEL R/W
- 42

FOUND 2" IRON PIPE WITH 3/4" BRASS TAG STAMPED "LS 3246" PER (R8), DOWN 2' IN DIRT, S18'18'44"W 0.17' FROM ESTABLISHED B.C. OF N'LY CAÑADA CHANNEL R/W
- 43

FOUND 2" IRON PIPE WITH 3/4" BRASS TAG STAMPED "LS 3246" PER (R8), DOWN 1.2' IN DIRT, S58'55'12"W 0.13' FROM ESTABLISHED B.C. OF N'LY CAÑADA CHANNEL R/W
- 44

FOUND LEAD, TACK, AND 3/4" TAG STAMPED "LS 3246" PER (R8), FLUSH WITH TOP OF BLOCK WALL, N08'53'49"E 0.08' FROM ESTABLISHED B.C. OF N'LY R/W OF CAÑADA CHANNEL
- 45

FOUND LEAD, TACK, AND 3/4" TAG STAMPED "LS 3246" PER (R8), FLUSH WITH TOP OF FOOTING OF BLOCK WALL, N10'34'44"W 0.11' FROM ESTABLISHED E.C. OF N'LY CAÑADA CHANNEL R/W
- 46

FOUND 2" IRON PIPE WITH 3/4" BRASS TAG STAMPED "LS 3246" PER (R8), DOWN 3' IN DIRT, N09'30'28"E 0.15' FROM ESTABLISHED B.C. OF N'LY CAÑADA CHANNEL R/W
- 47

FOUND 2" IRON PIPE WITH NO DISK AND OPEN NO REF., UP 0.6' FROM DIRT, S81'05'33"E 0.75' FROM W'LY LINE OF LOT 3, ACUNA TRACT N08'54'27"E 0.25' FROM ESTABLISHED N'LY LINE OF PARCEL B
- 48

FOUND 1" IRON PIPE WITH PLASTIC CAP STAMPED "LS 3832" NO REF., DOWN 0.5' IN DIRT, N81'05'33"W 0.29' FROM W'LY LINE OF LOT 3, ACUNA TRACT
- 49

FOUND 1" IRON PIPE WITH PLASTIC CAP STAMPED "LS 3258" NO REF., 0.2' IN DIRT, S81'05'33"E 0.27' FROM W'LY LINE OF LOT 3, ACUNA TRACT
- 50

FOUND 3/4" IRON PIPE WITH PLASTIC CAP STAMPED "RCE 9757" PER (R9), DOWN 0.5' IN DIRT, N81'05'33"W 0.23' FROM W'LY LINE OF LOT 3, ACUNA TRACT
- 51

FOUND 2" IRON PIPE WITH NO DISK NO REF., IN LIEU OF 2" IRON PIPE WITH TAG "LS3347" PER (R17), DOWN 1' IN DIRT, ACCEPTED AS A POINT ON THE W'LY LINE OF LOT 3, ACUNA TRACT, N08'54'27"E 0.24' FROM THE S'LY R/W OF LAKE FOREST DRIVE
- 52

FOUND 1" IRON PIPE WITH ILLEGIBLE PLASTIC CAP PARTIALLY STAMPED "RCE", NO REFERENCE, DOWN 0.3' IN DIRT, S81'05'33"E 0.74' FROM W'LY LINE OF LOT 3, ACUNA TRACT
- 53

FOUND MAG SPIKE WITH 1-1/2" ILLEGIBLE WASHER, ACCEPTED AS BEING SPIKE AND WASHER WITH STAMPING "R.C.E. 9757" PER (R9), DOWN 0.2' IN AC, ACCEPTED AS A POINT ON CENTERLINE OF MILL CREEK DR.
- 54

FOUND MAG SPIKE AND WITH 1-1/2" WASHER STAMPED "RCE 9757" PER (R9), DOWN 0.2' IN AC, S50'53'31"E 0.07' FROM S'LY TERMINUS OF ESTABLISHMENT 6
- 55

FOUND MAG SPIKE WITH 1-1/2" WASHER STAMPED "RCE 9757" PER (R9), DOWN 0.2' IN AC, N35'48'58"E 0.05' FROM S'LY TERMINUS OF ESTABLISHMENT 10
- 56

FOUND MAG SPIKE WITH 1-1/2" WASHER STAMPED "RCE 9757" PER (R9), DOWN 0.2' IN AC, ACCEPTED AS E.C. OF CENTERLINE OF MILL CREEK DR.
- 57

FOUND BOAT SPIKE WITH NO WASHER BENT NORTHERLY NO REF., DOWN 0.2' IN AC, ACCEPTED AS B.C. POINT ON THE CENTERLINE OF MILL CREEK DR.
- 58

FOUND 2" IRON PIPE, WITH CONCRETE PLUG NO REF., MEASURED CENTER MASS OF IRON PIPE, ACCEPTED IN LIEU OF 2" IRON PIPE WITH TAG STAMPED "RCE 20187" PER (R18), DOWN 1' IN DIRT, ACCEPTED AS THE SW CORNER OF PARCEL 1 PER (R18)
- 59

FOUND MAG SPIKE WITH 1 1/2" WASHER STAMPED "RCE" REST IS ILLEGIBLE IN LIEU OF SPIKE AND WASHER STAMPED "RCE 9757" PER (R9), DOWN 0.2' IN DIRT, ACCEPTED AS B.C. POINT ON THE CENTERLINE OF MILL CREEK DR.
- 60

FOUND MAG SPIKE WITH 1 1/2" WASHER WITH ILLEGIBLE TAG IN LIEU OF SPIKE AND WASHER STAMPED "RCE 9757" PER (R9), DOWN 0.25' IN A.C., ACCEPTED AS AS E.C. POINT ON THE CENTERLINE OF MILL CREEK DR.

MONUMENT NOTES

- 61

FOUND MAG SPIKE WITH 1 1/2" WASHER STAMPED "RCE 9757" PER (R9), DOWN 0.2' IN AC, ACCEPTED AS A POINT ON CENTERLINE OF MILL CREEK DR. S08'52'46"W 0.07' FROM B.C.
- 62

FOUND BOAT SPIKE WITH 1-1/2" WASHER STAMPED "PSOMAS LS 5282" PER (R10), FLUSH WITH ASPHALT , ACCEPTED AS CENTERLINE INTERSECTION OF NEW LAKE FOREST DR. AND MILL CREEK RD.
- 63

FOUND BOAT SPIKE WITH 1 1/2" WASHER STAMPED "PSOMAS LS 5282" PER (R11), FLUSH WITH ASPHALT, S08'53'59"W 0.05' FROM CENTERLINE OF LAKE FOREST DR.
- 64

FOUND LEAD, TACK, AND TAG STAMPED "RCE 13737" PER (R16), FLUSH IN CONCRETE GUTTER, ACCEPTED AS A POINT ON THE W'LY LINE OF LOT 3, ACUNA TRACT, R.S. 1-12
- 65

FOUND LEAD WITH 3/4" TAG STAMPED "RCE 20187" FLUSH WITH CONCRETE SIDEWALK NO REFERENCE IN LIEU OF 2" IRON PIPE TAGGED "RCE 20187" PER (R18), ACCEPTED AS A POINT ON THE W'LY R/W OF MILL CREEK DR.
- 66

FOUND 1 1/4" IRON PIPE WITH TACK AND PLASTIC PLUG STAMPED "RCE 97\_..." 0.5' DOWN IN DIRT IN LIEU OF 3/4" IRON PIPE TAGGED "RCE 9757" PER (R9), ACCEPTED AS SW CORNER OF PARCEL 6 PER (R9)
- 67

FOUND 1 1/4" IRON PIPE WITH TACK AND PLASTIC PLUG STAMPED "RCE 9757" PER (R9), 0.8' DOWN IN DIRT, ACCEPTED AS B.C. IN S'LY LINE OF PARCEL "B" PER (R9),
- 68

FOUND 1 1/4" IRON PIPE WITH PLASTIC PLUG STAMPED "LS 3832" NO REFERENCE, DOWN 0.3' IN DIRT, S81'05'33"E 0.05' FROM W'LY LINE OF LOT 3, ACUNA TRACT
- 69

FOUND 1 1/4" IRON PIPE WITH ILLEGIBLE PLASTIC CAP NO REFERENCE, DOWN 0.7' IN DIRT, S81'05'33"E 0.13' FROM W'LY LINE OF LOT 3, ACUNA TRACT
- 70

FOUND 1 1/4" IRON PIPE WITH PLASTIC PLUG STAMPED "RCE 9757", PER (R9), DOWN 0.7' IN DIRT, S81'05'33"E 0.30' FROM W'LY LINE OF LOT 3, ACUNA TRACT
- 71

FOUND 2 1/2" IRON PIPE WITH TACK AND TAG STAMPED "LS 3246" PER (R8), DOWN 1.5' IN DIRT, S81'05'33"E 0.08' FROM W'LY LINE OF LOT 3, ACUNA TRACT
- 72

FOUND 1 1/4" IRON PIPE WITH A PLASTIC CAP STAMPED "LS 3832", NO REFERENCE, DOWN 0.9' IN DIRT, S81'05'33"E 0.22' FROM W'LY LINE OF LOT 3, ACUNA TRACT
- 73

FOUND 1 1/4" IRON PIPE WITH A PLASTIC CAP STAMPED "LS 3832" NO REFERENCE, DOWN 0.3' IN DIRT, S81'05'33"E 0.33' FROM W'LY LINE OF LOT 3, ACUNA TRACT
- 74

FOUND 1 1/4" IRON PIPE WITH PLASTIC PLUG STAMPED "RCE 9757" PER (R9), DOWN 0.9' IN DIRT, S81'05'33"E 0.32' FROM W'LY LINE OF LOT 3, ACUNA TRACT
- 75

FOUND 1 1/4" IRON PIPE WITH PLASTIC PLUG WITH ILLEGIBLE STAMP NO REFERENCE, DOWN 0.3' IN DIRT, S81'05'33"E 0.11' FROM W'LY LINE OF LOT 3, ACUNA TRACT
- 76

FOUND LEAD, TACK, AND TAG WITH TAG STAMPED "DIV HWYS" PER (R22), FLUSH IN CONCRETE, ACCEPTED AS POINT ON CENTERLINE OF LAKE FOREST DR.
- 77

FOUND CHISELED SQUARE WITH RAMSET NAIL NO TAG PER (R23), ACCEPTED AS A TIE POINT FOR THE INTERSECTION OF LAKE FOREST DRIVE AND AVENIDA DE LA CARLOTA
- 78

FOUND LEAD, TACK, AND TAG WITH TAG STAMPED "OCS TIE" PER (R23), FLUSH IN CONCRETE CURB, ACCEPTED AS A TIE POINT FOR THE INTERSECTION OF LAKE FOREST DRIVE AND AVENIDA DE LA CARLOTA
- 79

FOUND 2" IRON PIPE WITH 3/4" ILLEGIBLE BRASS TAG STAMPED "6" PER (R13), N08'54'32"E 0.09' FROM S'LY LINE OF LAKE FOREST DR.
- 80

FOUND BOAT SPIKE WITH 1 1/4" ILLEGIBLE WASHER IN LIEU OF SPIKE AND WASHER STAMPED "LS 3246" PER (R22), ACCEPTED AS A POINT ON CENTERLINE OF AVENIDA LA CARLOTA
- 81

FOUND GEAR SPIKE WITH 1 1/2" WASHER STAMPED "LS 5778" NO REFERENCE, ACCEPTED AS THE CENTERLINE INTERSECTION OF AVENIDA DE LA CARLOTA AND PLAZA PONTE DR. PER (R22)
- 82

FOUND MAG SPIKE WITH 1 1/4" WASHER STAMPED "LS 3246" PER (R22), DOWN 0.2' IN A.C., ACCEPTED AS A POINT ON CENTERLINE OF PLAZA POINTE DR.
- 83

FOUND BOAT SPIKE WITH 1 1/4" WASHER STAMPED "LS 3246" PER (R22), DOWN 0.2' IN A.C., ACCEPTED AS B.C. ON THE CENTERLINE OF AVENIDA DE CARLOTA
- 84

FOUND BOAT SPIKE WITH ILLEGIBLE WASHER IN LIEU OF P.K. NAIL PER (R22), DOWN 0.3' IN A.C., ACCEPTED AS BEING POINT ON TANGENT OF THE CENTERLINE OF AVENIDA DE CARLOTA, N08'54'11"E 0.09' FROM E.C.

REFERENCES

- (R1) = TRACT NO. 8861, M.M. 373/38-42
- (R2) = O.C.S. ALIGNMENT NOTE A/6-8, PGS. 2375-2393
- (R3) = CORNER RECORD, C.R. 2011-1782
- (R4) = TRACT NO. 8862, M.M. 372/ 48-50
- (R5) = TRACT NO. 8863, M.M. 373/ 43-44
- (R6) = RECORD OF SURVEY 96-1064, R.S.B. 166/21-26
- (R7) = PARCEL MAP NO. 2009-104, P.M.B. 379/11-14
- (R8) = PARCEL MAP, P.M.B. 110/14-18
- (R9) = PARCEL MAP, P.M.B. 147/43-47
- (R10) = PARCEL MAP NO. 97-194, P.M.B. 302/28-37
- (R11) = PARCEL MAP NO. 2005-245, P.M.B. 353/20-27
- (R12) = PARCEL MAP NO. 90-130, P.M.B. 279/1-7
- (R13) = PARCEL MAP, P.M.B. 97/9-10
- (R14) = GRANT DEED, BOOK 10184, PAGES 876-883
- (R15) = RECORD OF SURVEY 97-1067, R.S.B. 166/40-42
- (R16) = PARCEL MAP 85-135, P.M.B. 202/1-2
- (R17) = PARCEL MAP, P.M.B. 68/32
- (R18) = PARCEL MAP NO. 80-139, P.M.B. 156/18-19
- (R19) = GRANT DEED, 12545/945-948
- (R20) = O.C. FLOOD CONTROL R/W MAP, F23-003
- (R21) = PARCEL MAP 85-135, P.M.B. 202/1-2
- (R22) = PARCEL MAP, P.M.B. 120/17-21
- (R23) = O.C.S. ALIGNMENT NOTE A/6-8, PGS. 6091-6095
- (R24) = O.C.S. ALIGNMENT NOTE A/6-8, PGS. 6340-6379
- (R25) = ACUNA TRACT, R.S.B. 1/12

BASIS OF BEARINGS

THE BASIS OF BEARINGS FOR THIS SURVEY IS BASED ON THE CALIFORNIA COORDINATE SYSTEM (CCS83), ZONE VI, NAD 83, OCS (2017.50) EPOCH ADJUSTMENT, AS DETERMINED LOCALLY BY A LINE BETWEEN CONTINUOUS GLOBAL POSITIONING STATIONS CGPS STATIONS (P471) AND (MJPK) BEING NORTH 02'18'24" WEST AS DERIVED FROM THE COORDINATES PUBLISHED BY THE CALIFORNIA SPATIAL REFERENCE CENTER (CSRC) ALONG WITH DATA SHEETS ON FILE IN THE OFFICE OF THE ORANGE COUNTY SURVEYOR.

HORIZONTAL DATUM

COORDINATES SHOWN ARE BASED ON THE CALIFORNIA COORDINATE SYSTEM (CCS83), ZONE VI, NAD 83, OCS (2017.50) EPOCH ADJUSTMENT.

ALL DISTANCES SHOWN ARE GRID, UNLESS OTHERWISE NOTED. TO OBTAIN GROUND DISTANCE MULTIPLY A GRID DISTANCE BY 1.00004014.

THIS COMBINATION FACTOR WAS DERIVED BY AN AVERAGE OF TWO POINTS:

#600  
N:2175139.32' E:6113006.45' ELEVATION= 277.75'  
#604  
N:2175089.28' E:6109561.67' ELEVATION= 255.66'

POINT LOCATIONS SHOWN ON SHEET 1

RECORD DISTANCES SHOWN HEREON ARE AS THEY APPEAR ON THE DOCUMENT OF RECORD. DISTANCES MAY BE EITHER GRID OR GROUND, AS PER SAID RECORD.

ALL DISTANCES ARE BASED ON THE U.S. SURVEY FOOT.

NOTES

RECORD DISTANCES SHOWN HEREON ARE AS THEY APPEAR ON THE DOCUMENT OF RECORD. DISTANCES MAY BE EITHER GRID OR GROUND, AS PER SAID RECORD.

REFERENCE DOCUMENTS IN THE REFERENCE LEGEND ARE LIVE HYPERLINKS TO SAID DOCUMENT.

SEE SHEET 4 FOR ESTABLISHMENT NOTES AND REFERENCES

SEE SHEET 8 FOR LINES AND CURVES TABLE

EASEMENT NOTES

- 1 EASEMENT GRANTED TO STATE OF CALIFORNIA FOR DRAINAGE PURPOSES PARCEL 3 PER (R14)
- 2 10' EASEMENT DEDICATED TO COUNTY OF ORANGE FOR STORM DRAIN AND PEDESTRIAN PURPOSES PER (R1)
- 3 EASEMENT GRANTED TO O.C.F.C.D. FOR INGRESS, EGRESS, CONSTRUCTION, MAINTENANCE AND RECREATIONAL TRAIL PURPOSES PER (R1)
- 4 ALL VEHICULAR ACCESS RIGHTS TO MOULTON PARKWAY ARE DEDICATED TO THE COUNTY OF ORANGE PER (R1)
- 5 PEDESTRIAN AND STORM DRAIN EASEMENT DEDICATED TO THE COUNTY OF ORANGE PER (R5)
- 6 EASEMENT FOR INGRESS, EGRESS AND INCIDENTAL PURPOSES OVER AND ACROSS PARCEL A DEDICATED TO THE O.C.F.C.D. PER (R8)
- 7 PROPOSED EASEMENT FOR INGRESS, EGRESS AND PUBLIC UTILITY PURPOSES PER (R8)
- 8 EASEMENT FOR FLOOD PURPOSES DEDICATED TO O.C.F.C.D. FOR CONSERVATION PURPOSES PER (R9)
- 9 SEWER EASEMENT TO LAGUNA HILLS SANITATION INC. PER (R9)
- 10 WATER EASEMENT TO LAGUNA HILLS WATER COMPANY PER (R9)

U.S. Survey

Foot

OC Public Works  
OC Survey/Field Services  
Boundary Analysis & Mapping

			COUNTY OF ORANGE OC PUBLIC WORKS OC SURVEY/FIELD SERVICES/BOUNDARY ANALYSIS & MAPPING				
			CAÑADA CHANNEL (F23) REHABILITATION				
			BOUNDARY MAP				
			PROJECT LIMITS: FROM MILL CREEK DRIVE TO AVENIDA DE LA CARLOTA				
			DATE OF SURVEY: 04/30/2021		BY: P. MAGUIRE & CREW		SHEET NO.  3 of 15
			MAPPING		BY: F. DADASHI		
			OFFICE CHECK		BY: J. MORENO, PLS		
FIELD CHECK		BY: P. MAGUIRE					
MARK	DATE	ITEM		SCALE: N/A		W.O. #EF21476	FILE #2021PW-OP0003
REVISIONS		FILE: CANADA_CHANNEL_BOUNDARY_2021.DWG					



ESTABLISHMENT NOTES

- Ⓔ ESTABLISHED THE N'LY, NE'LY AND E'LY R/W OF AVENIDA DE LA CARLOTA PARALLEL WITH AND A RECORD DISTANCE OF 40' PER (R1) N'LY, NE'LY AND E'LY OF LINE AND CURVE ESTABLISHMENTS Ⓒ, Ⓓ, Ⓔ, Ⓕ AND Ⓖ
- Ⓒ ESTABLISHED THE S'LY, SW'LY AND W'LY R/W OF AVENIDA DE LA CARLOTA PARALLEL WITH AND A RECORD DISTANCE OF 40' PER (R1) S'LY, SW'LY AND W'LY OF LINE AND CURVE ESTABLISHMENTS Ⓒ, Ⓓ, Ⓔ, Ⓕ AND Ⓖ
- Ⓓ ESTABLISHED THE SUPERSEDED SW'LY R/W OF AVENIDA DE LA CARLOTA PARALLEL WITH AND A RECORD DISTANCE OF 30' PER (R1) SW'LY OF CURVE ESTABLISHMENT Ⓒ
- Ⓔ ESTABLISHED PORTION OF THE N'LY LINE OF TRACT (R1) HOLDING A LINE BETWEEN MONUMENT NOTES 4 AND 5
- Ⓔ ESTABLISHED THE INTERSECTION OF SUPERSEDED SW'LY R/W LINE OF AVENIDA DE LA CARLOTA WITH N'LY LINE OF (R1) BY INTERSECTION HOLDING LINE ESTABLISHMENTS Ⓓ AND Ⓔ
- Ⓒ ESTABLISHED THE N'LY CORNER OF EASEMENT 1 BY HOLDING THE RECORD CURVE INFORMATION PER (R1) SE'LY FROM ESTABLISHMENT NOTE Ⓔ ALONG ESTABLISHMENT Ⓓ
- Ⓓ ESTABLISHED THE W'LY CORNER OF EASEMENT 1 BY HOLDING THE RECORD DISTANCE AND ANGLE PER (R1) S'LY FROM ESTABLISHMENT NOTE Ⓒ
- Ⓓ ESTABLISHED THE E'LY CORNER OF EASEMENT 1 BY HOLDING THE RECORD DISTANCE AND ANGLE PER (R1) E'LY FROM ESTABLISHMENT NOTE Ⓓ
- Ⓓ ESTABLISHED THE N'LY R/W OF CAÑADA CHANNEL HOLDING A LINE THROUGH MONUMENT NOTES 18 AND 18 AND ITS SE'LY PROLONGATION TO A POINT PERPENDICULAR TO MONUMENT 12
- Ⓒ ESTABLISHED THE N'LY R/W OF CAÑADA CHANNEL HOLDING RECORD CURVE INFORMATION PER (R1) AT SE'LY TERMINUS OF LINE ESTABLISHMENT Ⓓ
- Ⓓ ESTABLISHED THE N'LY R/W OF CAÑADA CHANNEL HOLDING A LINE TANGENT AT E.C. OF CURVE ESTABLISHMENT Ⓒ
- Ⓒ ESTABLISHED THE N'LY LINE OF EASEMENT 3 HOLDING A LINE PARALLEL WITH AND RECORD DISTANCE OF 32' PER (R1) N'LY OF LINE ESTABLISHMENTS Ⓓ, Ⓒ AND Ⓓ
- Ⓒ ESTABLISHED THE N'LY LINE OF EASEMENT 3 BY HOLDING A LINE TANGENT TO LINE ESTABLISHMENT Ⓓ AND HOLDING RECORD DISTANCE OF 57.60' PER (R1) FROM E'LY TERMINUS OF LINE ESTABLISHMENT Ⓓ
- Ⓒ ESTABLISHED THE N'LY LINE OF EASEMENT 3 BY HOLDING RECORD COURSES PER (R1) FROM E'LY TERMINUS OF LINE ESTABLISHMENT Ⓒ
- Ⓔ ESTABLISHED THE S'LY R/W OF CAÑADA CHANNEL HOLDING A LINE PARALLEL WITH AND RECORD DISTANCE OF 90' PER (R1) S'LY FROM LINE ESTABLISHMENT Ⓓ
- Ⓒ ESTABLISHED THE S'LY R/W OF CAÑADA CHANNEL HOLDING A LINE PARALLEL WITH AND RECORD DISTANCE OF 90' PER (R1) S'LY FROM LINE ESTABLISHMENT Ⓓ
- Ⓒ ESTABLISHED THE S'LY R/W OF CAÑADA CHANNEL HOLDING RECORD RADIUS PER (R1) AND TANGENT TO LINE ESTABLISHMENTS Ⓒ AND Ⓒ
- Ⓒ ESTABLISHED THE S'LY R/W OF CAÑADA CHANNEL HOLDING RECORD RADIUS PER (R1) AND TANGENT TO LINE ESTABLISHMENTS Ⓒ AT MONUMENT 9
- Ⓓ ESTABLISHED THE CENTERLINE OF DEL LAGO DR. BY HOLDING A LINE BETWEEN MONUMENT NOTES 19 AND 20
- Ⓓ ESTABLISHED THE CENTERLINE OF DEL LAGO DR. BY HOLDING RECORD CURVE INFORMATION PER (R1) AND TANGENT TO LINE ESTABLISHMENT Ⓓ
- Ⓒ ESTABLISHED THE CENTERLINE OF DEL LAGO DR. BY HOLDING RECORD CURVE INFORMATION PER (R1) AND REVERSE TO CURVE ESTABLISHMENT Ⓓ
- Ⓒ ESTABLISHED THE CENTERLINE OF DEL LAGO DR. TANGENT TO THE S'LY TERMINUS OF ESTABLISHMENT Ⓓ
- Ⓒ ESTABLISHED THE W'LY R/W OF DEL LAGO DR. HOLDING A LINE PARALLEL WITH AND RECORD DISTANCE OF 40' PER (R1) W'LY OF LINE ESTABLISHMENTS Ⓓ, Ⓓ, Ⓓ AND Ⓓ
- Ⓓ ESTABLISHED THE E'LY R/W OF DEL LAGO DR. HOLDING A LINE PARALLEL WITH AND RECORD DISTANCE OF 40' PER (R1) E'LY OF LINE ESTABLISHMENTS Ⓓ, Ⓓ, Ⓓ AND Ⓓ
- Ⓒ ESTABLISHED THE CENTERLINE OF LA CADENA DR. BY HOLDING A LINE BETWEEN MONUMENT NOTES 24 AND 33
- Ⓒ ESTABLISHED THE S'LY R/W OF CAÑADA CHANNEL BY HOLDING A LINE BETWEEN MONUMENT NOTES 27 AND 39
- Ⓒ ESTABLISHED THE S'LY R/W OF CAÑADA CHANNEL BY HOLDING RECORD CURVE INFORMATION TANGENT TO LINE ESTABLISHMENT Ⓒ AT MONUMENT NOTE 39
- Ⓒ ESTABLISHED THE S'LY R/W OF CAÑADA CHANNEL BY A LINE TANGENT TO W'LY TERMINUS OF LINE ESTABLISHMENT Ⓒ
- Ⓒ ESTABLISHED THE N'LY R/W OF CAÑADA CHANNEL HOLDING A LINE PARALLEL WITH AND RECORD DISTANCE OF 90' PER (R1) N'LY OF LINE ESTABLISHMENT Ⓒ, Ⓒ AND Ⓒ
- Ⓒ ESTABLISHED THE N'LY LINE OF EASEMENT 3 BY HOLDING THE RECORD DISTANCE OF 32' PER (R1) N'LY OF LINE ESTABLISHMENT Ⓒ

ESTABLISHMENT NOTES

- Ⓒ ESTABLISHED THE E.C. ON THE N'LY LINE OF EASEMENT 3 BY INTERSECTION HOLDING RADIAL LINE OF CURVE ESTABLISHMENT Ⓒ AND LINE ESTABLISHMENT Ⓒ
- Ⓒ ESTABLISHED THE N'LY LINE OF EASEMENT 3 BY HOLDING RECORD COURSES AND CURVE INFORMATION PER (R1) FROM ESTABLISHMENT NOTE Ⓒ
- Ⓒ ESTABLISHED THE CENTERLINE OF LAKE FOREST DR. BY HOLDING A LINE BETWEEN MONUMENT NOTES 19 AND 23
- Ⓒ ESTABLISHED THE CENTERLINE OF MOULTON PKWY. BY HOLDING A LINE BETWEEN MONUMENT NOTES 28 AND 23
- Ⓒ ESTABLISHED THE E'LY R/W OF MOULTON PKWY. BY HOLDING A LINE PARALLEL WITH AND RECORD DISTANCE OF 60' PER (R1) E'LY LINE OF ESTABLISHMENT Ⓒ
- Ⓒ ESTABLISHED THE W'LY R/W OF MOULTON PKWY. BY HOLDING A LINE PARALLEL WITH AND RECORD DISTANCE OF 60' PER (R1) W'LY FROM LINE ESTABLISHMENT Ⓒ
- Ⓒ ESTABLISHED THE CENTERLINE OF MILL CREEK DR. BY HOLDING A LINE BETWEEN MONUMENT NOTES 61 AND 62
- Ⓒ ESTABLISHED THE CENTERLINE INTERSECTION OF OLD LAKE FOREST DR. AND MILL CREEK DR. BY HOLDING A RECORD DISTANCE OF 3.12' PER (R15) S'LY FROM MONUMENT NOTE 62 ALONG LINE ESTABLISHMENT Ⓒ
- Ⓒ ESTABLISHED THE CENTERLINE OF LAKE FOREST DR. BY HOLDING A LINE BETWEEN MONUMENT NOTE 23 AND ESTABLISHMENT NOTE Ⓒ
- Ⓒ ESTABLISHED THE B.C. OF NEW LAKE FOREST DR. BY HOLDING A RECORD DISTANCE 249.85' PER (R10) E'LY FROM ESTABLISHMENT NOTE Ⓒ ALONG LINE ESTABLISHMENT Ⓒ
- Ⓒ ESTABLISHED THE NEW CENTERLINE OF LAKE FOREST DR. BY HOLDING RECORD CURVE INFORMATION TANGENT TO LINE ESTABLISHMENT Ⓒ AT ESTABLISHMENT NOTE Ⓒ
- Ⓒ ESTABLISHED A PORTION OF THE W'LY LINE OF LOT 3, ACUNA TRACT BY HOLDING A LINE BETWEEN MONUMENT NOTES 51 AND 64
- Ⓒ ESTABLISHED THE CENTERLINE OF MILL CREEK DR. BY HOLDING A LINE BETWEEN MONUMENT NOTES 53 AND 60
- Ⓒ ESTABLISHED THE CENTERLINE OF MILL CREEK DR. BY HOLDING RECORD RADIUS PER (R9) TANGENT TO LINE ESTABLISHMENTS Ⓒ AND Ⓒ
- Ⓒ ESTABLISHED THE CENTERLINE OF MILL CREEK DR. BY HOLDING RECORD CURVE INFORMATION PER (R9) TANGENT TO LINE ESTABLISHMENT Ⓒ
- Ⓒ ESTABLISHED THE CENTERLINE OF MILL CREEK DR. BY HOLDING A LINE TANGENT TO LINE ESTABLISHMENT Ⓒ TO MONUMENT NOTE 57
- Ⓒ ESTABLISHED THE CENTERLINE OF MILL CREEK DR. BY HOLDING RECORD RADIUS PER (R9) TANGENT TO LINE ESTABLISHMENT Ⓒ FROM MONUMENT NOTE 66
- Ⓒ ESTABLISHED THE CENTERLINE OF MILL CREEK DR. HOLDING A LINE TANGENT TO CURVE ESTABLISHMENT Ⓒ AND HOLDING RECORD DISTANCE OF 100.00' PER (R9)
- Ⓒ ESTABLISHED THE CENTERLINE OF MILL CREEK DR. HOLDING RECORD CURVE INFORMATION PER (R9) TANGENT TO LINE ESTABLISHMENT Ⓒ
- Ⓒ ESTABLISHED THE CENTERLINE OF MILL CREEK DR. HOLDING A LINE TANGENT TO CURVE ESTABLISHMENT Ⓒ AND MONUMENT NOTE 53
- Ⓒ ESTABLISHED THE E'LY R/W OF MILL CREEK DR. HOLDING A LINE PARALLEL WITH AND RECORD DISTANCE OF 30' PER (R9) E'LY FROM LINE ESTABLISHMENT Ⓒ
- Ⓒ ESTABLISHED THE N'LY LINE OF PARCEL "A" OF (R9) BY HOLDING A LINE BETWEEN MONUMENTS 58 AND 63
- Ⓒ ESTABLISHED THE N'LY LINE OF PARCELS "B" OF (R9) BY E'LY PROLONGATION OF LINE ESTABLISHMENT Ⓒ TO INTERSECT WITH LINE ESTABLISHMENT Ⓒ
- Ⓒ ESTABLISHED THE S'LY LINE OF PARCELS "A" AND "B" PER (R9) HOLDING A LINE PARALLEL WITH AND RECORD DISTANCE OF 125' PER (R9) S'LY FROM LINE ESTABLISHMENTS Ⓒ AND Ⓒ
- Ⓒ ESTABLISHED THE E'LY R/W OF MILL CREEK DR. HOLDING A LINE PARALLEL WITH AND RECORD DISTANCE OF 30' PER (R9) E'LY LINE OF ESTABLISHMENT Ⓒ
- Ⓒ ESTABLISHED THE N'LY LINE OF PARCEL "A" OF (R9) BY HOLDING A LINE BETWEEN MONUMENTS 58 AND 63
- Ⓒ ESTABLISHED THE N'LY LINE OF PARCELS "B" OF (R9) BY E'LY PROLONGATION OF LINE ESTABLISHMENT Ⓒ TO INTERSECT WITH LINE ESTABLISHMENT Ⓒ
- Ⓒ ESTABLISHED THE S'LY LINE OF PARCELS "A" AND "B" PER (R9) HOLDING A LINE PARALLEL WITH AND RECORD DISTANCE OF 125' PER (R9) S'LY FROM LINE ESTABLISHMENTS Ⓒ AND Ⓒ
- Ⓒ ESTABLISHED THE E'LY R/W OF MILL CREEK DR. HOLDING A LINE PARALLEL WITH AND RECORD DISTANCE OF 30' PER (R9) E'LY LINE OF ESTABLISHMENT Ⓒ
- Ⓒ ESTABLISHED THE NW CORNER OF PARCEL "B" PER (R9) BY INTERSECTION HOLDING LINE ESTABLISHMENTS Ⓒ AND Ⓒ
- Ⓒ ESTABLISHED THE NE CORNER OF PARCEL "B" PER (R9) BY INTERSECTION HOLDING LINE ESTABLISHMENTS Ⓒ AND Ⓒ
- Ⓒ ESTABLISHED THE SW CORNER OF PARCEL "B" PER (R9) BY INTERSECTION HOLDING LINE ESTABLISHMENTS Ⓒ AND Ⓒ
- Ⓒ ESTABLISHED THE S'LY CORNER OF PARCEL "B" PER (R9) BY HOLDING RECORD DISTANCE OF 408.62' PER (R9) S'LY FROM MONUMENT NOTE 47 ALONG LINE ESTABLISHMENT Ⓒ

ESTABLISHMENT NOTES

- Ⓒ ESTABLISHED W'LY LINE OF PARCEL "A", PARCEL 5 AND PARCEL 6 PER (R9) BY HOLDING A LINE BETWEEN MONUMENTS 58 AND 66
- Ⓒ ESTABLISHED THE SW CORNER OF PARCEL "A" PER (R9) BY INTERSECTION HOLDING LINE ESTABLISHMENTS Ⓒ AND Ⓒ
- Ⓒ ESTABLISHED THE E'LY LINE OF PARCEL "A" PER (R9) BY HOLDING A LINE PARALLEL WITH AND RECORD DISTANCE OF 30' PER (R9) W'LY OF LINE ESTABLISHMENT Ⓒ
- Ⓒ ESTABLISHED THE SE CORNER OF PARCEL "A" BY INTERSECTION HOLDING LINE ESTABLISHMENTS Ⓒ AND Ⓒ
- Ⓒ ESTABLISHED THE W'LY LINE OF PARCEL "B" PER (R9) BY HOLDING A LINE PARALLEL WITH AND RECORD DISTANCE OF 30' PER (R9) E'LY OF LINE ESTABLISHMENT
- Ⓒ ESTABLISHED A PORTION OF THE SW'LY EASEMENT LINE OF PARCEL "B" PER (R9) BY HOLDING RECORD RADIUS PER (R9) TANGENT TO LINE ESTABLISHMENT Ⓒ AT MONUMENT NOTE 67 AND TANGENT TO THE INTERSECTION OF ESTABLISHMENT NOTE Ⓒ
- Ⓒ ESTABLISHED THE S'LY R/W OF LAKE FOREST DR. BY HOLDING A LINE PARALLEL WITH AND RECORD DISTANCE OF 60' PER (R8) S'LY FROM LINE ESTABLISHMENT Ⓒ
- Ⓒ ESTABLISHED THE NW CORNER OF PARCEL 1 PER (R8) BY INTERSECTION HOLDING LINE ESTABLISHMENTS Ⓒ AND Ⓒ
- Ⓒ ESTABLISHED THE SW CORNER OF PARCEL 201.01 OF CAÑADA CHANNEL PER (R19) BY HOLDING RECORD DISTANCE OF 1007.61' PER (R8) ALONG LINE ESTABLISHMENT Ⓒ S'LY FROM ESTABLISHMENT NOTE Ⓒ
- Ⓒ ESTABLISHED THE NW CORNER OF PARCEL 201.01 OF CAÑADA CHANNEL PER (R19) BY HOLDING THE RECORD DISTANCE OF 182.81' PER (R8) ALONG LINE ESTABLISHMENT Ⓒ N'LY FROM ESTABLISHMENT NOTE Ⓒ
- Ⓒ ESTABLISHED THE S'LY LINE OF (R8) BY HOLDING A LINE BETWEEN MONUMENT NOTE 34 AND ESTABLISHMENT NOTE Ⓒ
- Ⓒ ESTABLISHED THE N'LY R/W OF PARCEL 201.01 OF CAÑADA CHANNEL PER (R19) BY HOLDING A LINE PARALLEL WITH AND RECORD DISTANCE OF 103.00' PER (R8) N'LY FROM LINE ESTABLISHMENT Ⓒ
- Ⓒ ESTABLISHED THE N'LY R/W OF PARCEL 201.01 OF CAÑADA CHANNEL PER (R19) BY HOLDING THE RECORD ANGLE OF 45°00'00" PER (R8) FROM LINE ESTABLISHMENT Ⓒ AT ESTABLISHMENT NOTE Ⓒ
- Ⓒ ESTABLISHED THE N'LY R/W OF PARCEL 201.01 OF CAÑADA CHANNEL PER (R19) BY HOLDING THE RECORD RADIUS PER (R8) TANGENT TO LINE ESTABLISHMENTS Ⓒ AND Ⓒ
- Ⓒ ESTABLISHED THE E'LY TERMINUS OF N'LY R/W OF PARCEL 201.01 OF CAÑADA CHANNEL PER (R19) BY HOLDING A POINT ON ESTABLISHMENT LINE Ⓒ AND A POINT PERPENDICULAR TO MONUMENT NOTE 44
- Ⓒ ESTABLISHED THE N'LY R/W OF PARCEL 201.01 OF CAÑADA CHANNEL PER (R19) BY HOLDING THE RECORD INFORMATION PER (R8) TANGENT TO LINE ESTABLISHMENT Ⓒ AT ESTABLISHMENT NOTE Ⓒ
- Ⓒ ESTABLISHED THE N'LY R/W OF PARCEL 201.01 OF CAÑADA CHANNEL PER (R19) BY HOLDING A LINE TANGENT TO LINE ESTABLISHMENT Ⓒ
- Ⓒ ESTABLISHED THE N'LY R/W OF PARCEL 201.01 OF CAÑADA CHANNEL PER (R19) BY HOLDING THE RECORD RADIUS PER (R8) TANGENT TO LINE ESTABLISHMENTS Ⓒ AND Ⓒ
- Ⓒ ESTABLISHED SE CORNER OF PARCEL 9 PER (R8) BY INTERSECTION HOLDING LINE ESTABLISHMENTS Ⓒ AND Ⓒ
- Ⓒ ESTABLISHED THE MOST N'LY CORNER OF PARCEL 9 PER (R8) BY HOLDING RECORD DISTANCE OF 245.38' PER (R8) N'LY ALONG ESTABLISHMENT Ⓒ FROM ESTABLISHMENT NOTE Ⓒ
- Ⓒ ESTABLISHED THE W'LY LINE OF PARCEL 9 PER (R8) BY HOLDING RECORD DISTANCE OF 65.00' PER (R8) PERPENDICULAR TO LINE ESTABLISHMENT Ⓒ AT MONUMENT NOTE 33
- Ⓒ ESTABLISHED THE SE'LY R/W OF PARCEL 201.01 OF CAÑADA CHANNEL PER (R19) BY HOLDING A LINE BETWEEN ESTABLISHMENT NOTE Ⓒ AND N'LY TERMINUS OF LINE ESTABLISHMENT Ⓒ
- Ⓒ ESTABLISHED THE NW'LY R/W OF PARCEL 201.01 OF CAÑADA CHANNEL PER (R19) BY HOLDING A LINE PARALLEL WITH AND RECORD DISTANCE OF 94.00' PER (R8) NW'LY FROM LINE ESTABLISHMENT Ⓒ
- Ⓒ ESTABLISHED THE N'LY R/W OF PARCEL 201.01 OF CAÑADA CHANNEL PER (R19) BY HOLDING THE RECORD RADIUS PER (R8) TANGENT TO LINE ESTABLISHMENTS Ⓒ AND Ⓒ
- Ⓒ ESTABLISHED SE CORNER OF PARCEL 11 PER (R8) BY INTERSECTION HOLDING LINE ESTABLISHMENTS Ⓒ AND NE'LY PROLONGATION OF LINE ESTABLISHMENT Ⓒ
- Ⓒ ESTABLISHED W'LY R/W OF MILL CREEK RD. HOLDING A LINE PARALLEL AND CONCENTRIC WITH A RECORD DISTANCE OF 30' PER (R9) W'LY OF ESTABLISHED MILL CREEK DRIVE CENTERLINE
- Ⓒ ESTABLISHED E'LY R/W OF MILL CREEK DRIVE HOLDING A LINE PARALLEL AND CONCENTRIC WITH A RECORD DISTANCE OF 30' PER (R9) E'LY OF ESTABLISHED MILL CREEK DRIVE CENTERLINE
- Ⓒ ESTABLISHED THE SW CORNER OF PARCEL 6 PER (R8) BY HOLDING RECORD DISTANCE OF 102.83' PER (R8) E'LY FROM THE E'LY TERMINUS OF ESTABLISHMENT NOTE Ⓒ ALONG LINE ESTABLISHMENT Ⓒ

ESTABLISHMENT NOTES

- Ⓒ ESTABLISHED THE W'LY LINE OF PARCEL 6 BY HOLDING RECORD Ⓒ DISTANCE OF 181.49' PER (R8) AND RECORD ANGLE FROM LINE ESTABLISHMENT Ⓒ AT ESTABLISHMENT NOTE
- Ⓒ ESTABLISHED THE CENTERLINE OF LAKE FOREST DR. BY HOLDING A LINE BETWEEN MONUMENTS 19 AND 26
- Ⓒ ESTABLISHED THE INTERSECTION OF LAKE FOREST DR. AND AVENIDA DE CARLOTA BY TIES PER (R23)
- Ⓒ ESTABLISHED THE CENTERLINE OF AVENIDA DE CARLOTA BY BY HOLDING A LINE BETWEEN MONUMENTS 1 AND 84
- Ⓒ ESTABLISHED THE CENTERLINE OF AVENIDA DE LA CARLOTA BY HOLDING RECORD CURVE INFORMATION. PER (R22) TANGENT TO LINE ESTABLISHMENT Ⓒ AT MONUMENT 1
- Ⓒ ESTABLISHED THE CENTERLINE OF AVENIDA DE LA CARLOTA BY HOLDING A LINE BETWEEN ESTABLISHMENT Ⓒ AND ESTABLISHMENT Ⓒ
- Ⓒ ESTABLISHED THE E.C. OF CENTERLINE OF AVENIDA DE LA CARLOTA BY INTERSECTION HOLDING RECORD CHORD DISTANCE OF 128.33' PER (R22) FROM N'LY TERMINUS OF CURVE ESTABLISHMENT Ⓒ AND S'LY PROLONGATION OF LINE ESTABLISHMENT Ⓒ
- Ⓒ ESTABLISHED THE CENTERLINE OF AVENIDA DE LA CARLOTA HOLDING RECORD CURVE INFORMATION. PER (R22) TANGENT TO LINE ESTABLISHMENT Ⓒ AT ESTABLISHMENT Ⓒ

REFERENCES

- (R1) = TRACT NO. 8861, M.M. 373/38-42
- (R2) = O.C.S. ALIGNMENT NOTE A/6-8, PGS. 2375-2393
- (R3) = CORNER RECORD, C.R. 2011-1782
- (R4) = TRACT NO. 8862, M.M. 372/ 48-50
- (R5) = TRACT NO. 8863, M.M. 373/ 43-44
- (R6) = RECORD OF SURVEY 96-1064, R.S.B. 166/21-28
- (R7) = PARCEL MAP NO. 2009-104, P.M.B. 379/11-14
- (R8) = PARCEL MAP, P.M.B. 110/14-18
- (R9) = PARCEL MAP, P.M.B. 147/43-47
- (R10) = PARCEL MAP NO. 97-194, P.M.B. 302/28-37
- (R11) = PARCEL MAP NO. 2005-245, P.M.B. 353/20-27
- (R12) = PARCEL MAP NO. 90-130, P.M.B. 279/1-7
- (R13) = PARCEL MAP, P.M.B. 97/9-10
- (R14) = GRANT DEED, BOOK 10184, PAGES 876-883
- (R15) = RECORD OF SURVEY 97-1067, R.S.B. 166/40-42
- (R16) = PARCEL MAP 85-135, P.M.B. 202/1-2
- (R17) = PARCEL MAP, P.M.B. 68/32
- (R18) = PARCEL MAP NO. 80-139, P.M.B. 156/18-19
- (R19) = O.C. FLOOD CONTROL R/W MAP, F23-002
- (R20) = O.C. FLOOD CONTROL R/W MAP, F23-003
- (R21) = PARCEL MAP 85-135, P.M.B. 202/1-2
- (R22) = PARCEL MAP, P.M.B. 120/17-21
- (R23) = O.C.S. ALIGNMENT NOTE A/6-8, PGS. 6091-6095
- (R24) = O.C.S. ALIGNMENT NOTE A/6-8, PGS. 6340-6379
- (R25) = ACUNA TRACT, R.S.B. 1/12

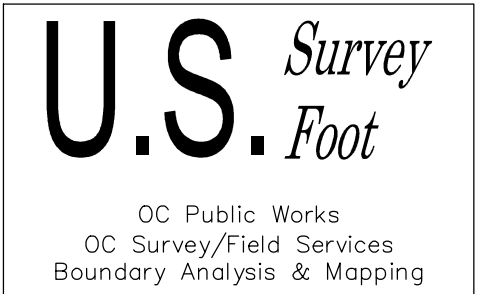
NOTES

RECORD DISTANCES SHOWN HEREON ARE AS THEY APPEAR ON THE DOCUMENT OF RECORD. DISTANCES MAY BE EITHER GRID OR GROUND, AS PER SAID RECORD.

REFERENCE DOCUMENTS IN THE REFERENCE LEGEND ARE LIVE HYPERLINKS TO SAID DOCUMENT.

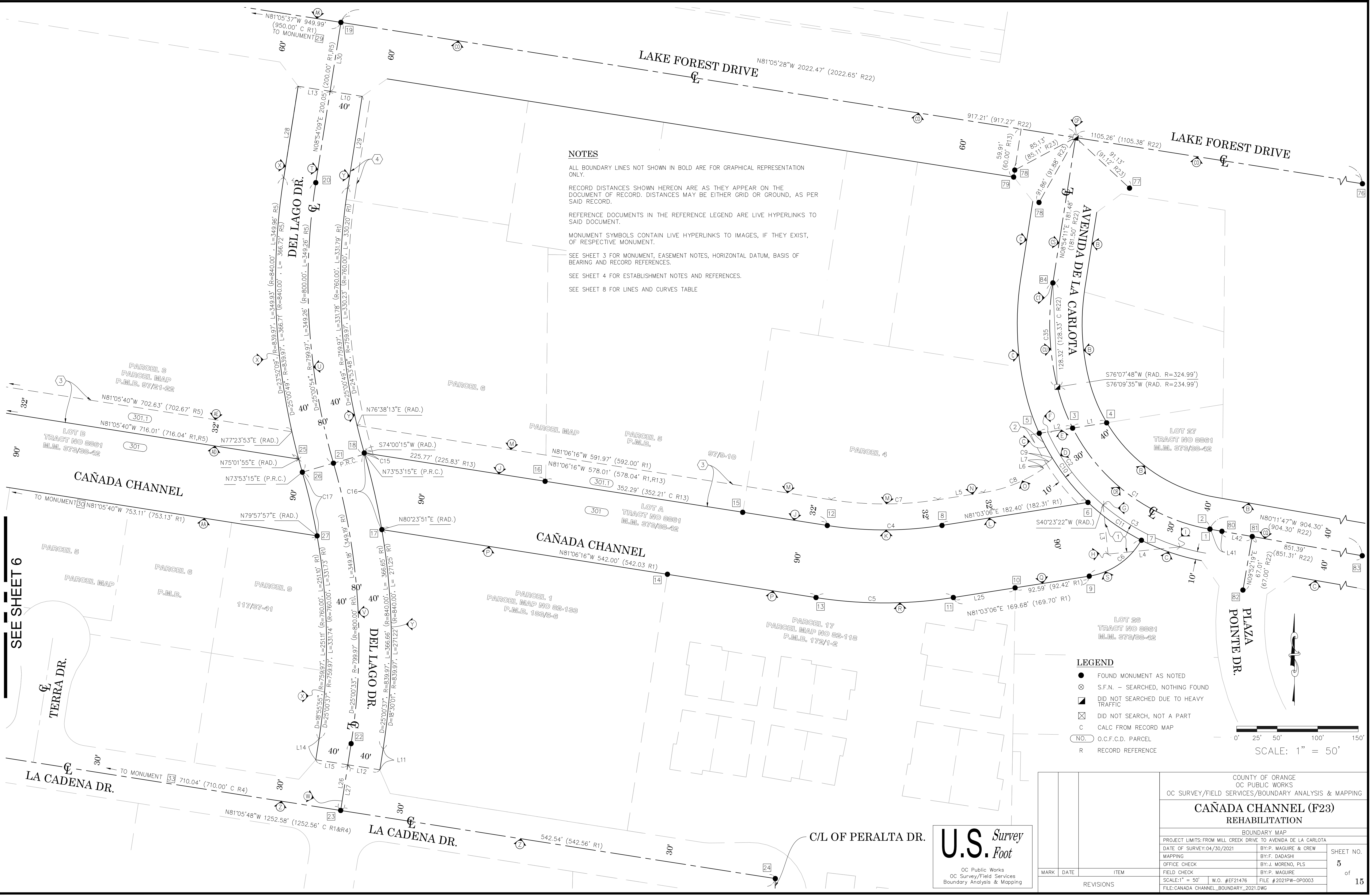
SEE SHEET 3 FOR MONUMENT, EASEMENT NOTES, HORIZONTAL DATUM, BASIS OF BEARING AND REFERENCES.

SEE SHEET 8 FOR LINES AND CURVES TABLE



		COUNTY OF ORANGE OC PUBLIC WORKS OC SURVEY/FIELD SERVICES/BOUNDARY ANALYSIS & MAPPING				
		CAÑADA CHANNEL (F23) REHABILITATION				
		BOUNDARY MAP				
		PROJECT LIMITS: FROM MILL CREEK DRIVE TO AVENIDA DE LA CARLOTA				
		DATE OF SURVEY: 04/30/2021		BY: P. MAGUIRE & CREW		SHEET NO.  4 of 15
		MAPPING		BY: F. DADASHI		
OFFICE CHECK		BY: J. MORENO, PLS				
FIELD CHECK		BY: P. MAGUIRE				
MARK	DATE	ITEM	SCALE: N/A		W.O. #EF21476	FILE #2021PW-OP0003
REVISIONS			FILE: CANADA_CHANNEL_BOUNDARY_2021.DWG			





NOTES

ALL BOUNDARY LINES NOT SHOWN IN BOLD ARE FOR GRAPHICAL REPRESENTATION ONLY.

RECORD DISTANCES SHOWN HEREON ARE AS THEY APPEAR ON THE DOCUMENT OF RECORD. DISTANCES MAY BE EITHER GRID OR GROUND, AS PER SAID RECORD.

REFERENCE DOCUMENTS IN THE REFERENCE LEGEND ARE LIVE HYPERLINKS TO SAID DOCUMENT.

MONUMENT SYMBOLS CONTAIN LIVE HYPERLINKS TO IMAGES, IF THEY EXIST, OF RESPECTIVE MONUMENT.

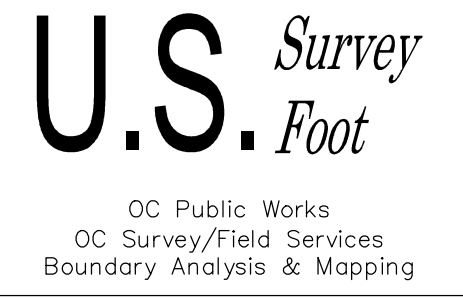
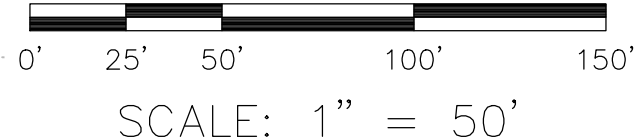
SEE SHEET 3 FOR MONUMENT, EASEMENT NOTES, HORIZONTAL DATUM, BASIS OF BEARING AND RECORD REFERENCES.

SEE SHEET 4 FOR ESTABLISHMENT NOTES AND REFERENCES.

SEE SHEET 8 FOR LINES AND CURVES TABLE

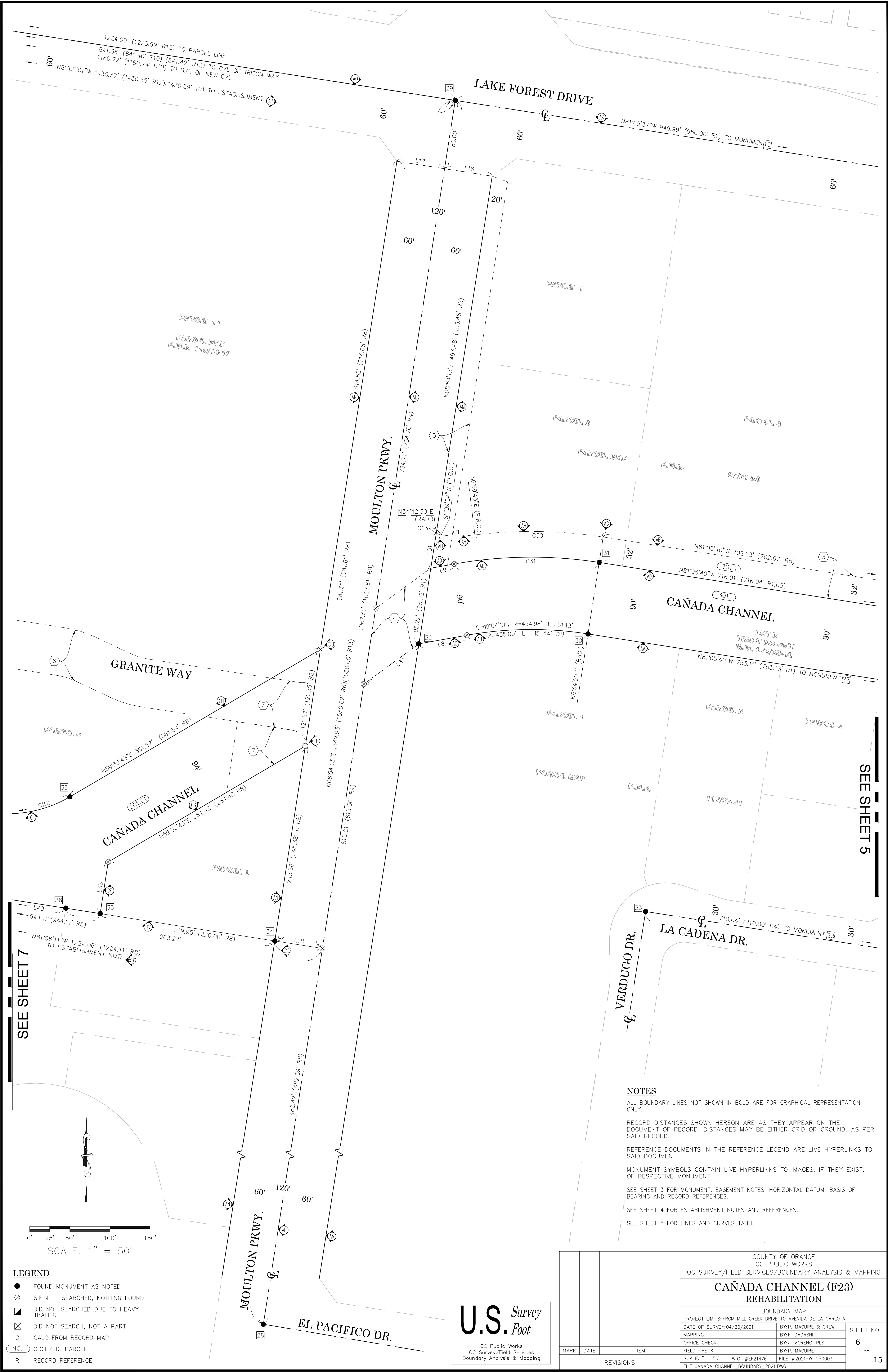
LEGEND

- FOUND MONUMENT AS NOTED
- ⊗ S.F.N. - SEARCHED, NOTHING FOUND
- DID NOT SEARCHED DUE TO HEAVY TRAFFIC
- ⊠ DID NOT SEARCH, NOT A PART
- C CALC FROM RECORD MAP
- NO. O.C.F.C.D. PARCEL
- R RECORD REFERENCE



		COUNTY OF ORANGE OC PUBLIC WORKS OC SURVEY/FIELD SERVICES/BOUNDARY ANALYSIS & MAPPING			
		CAÑADA CHANNEL (F23) REHABILITATION			
		BOUNDARY MAP			
		PROJECT LIMITS: FROM MILL CREEK DRIVE TO AVENIDA DE LA CARLOTA			
		DATE OF SURVEY: 04/30/2021		BY: P. MAQUIRE & CREW	
MAPPING		BY: F. DADASHI			
OFFICE CHECK		BY: J. MORENO, PLS			
FIELD CHECK		BY: P. MAQUIRE			
SCALE: 1" = 50'		FILE #2021PW-OP0003			
MARK		DATE		ITEM	
REVISIONS					
FILE: CAÑADA_CHANNEL_BOUNDARY_2021.DWG					





SEE SHEET 7

SEE SHEET 5

NOTES

- ALL BOUNDARY LINES NOT SHOWN IN BOLD ARE FOR GRAPHICAL REPRESENTATION ONLY.
- RECORD DISTANCES SHOWN HEREON ARE AS THEY APPEAR ON THE DOCUMENT OF RECORD. DISTANCES MAY BE EITHER GRID OR GROUND, AS PER SAID RECORD.
- REFERENCE DOCUMENTS IN THE REFERENCE LEGEND ARE LIVE HYPERLINKS TO SAID DOCUMENT.
- MONUMENT SYMBOLS CONTAIN LIVE HYPERLINKS TO IMAGES, IF THEY EXIST, OF RESPECTIVE MONUMENT.
- SEE SHEET 3 FOR MONUMENT, EASEMENT NOTES, HORIZONTAL DATUM, BASIS OF BEARING AND RECORD REFERENCES.
- SEE SHEET 4 FOR ESTABLISHMENT NOTES AND REFERENCES.
- SEE SHEET 8 FOR LINES AND CURVES TABLE

LEGEND

- FOUND MONUMENT AS NOTED
- ⊗ S.F.N. - SEARCHED, NOTHING FOUND
- DID NOT SEARCHED DUE TO HEAVY TRAFFIC
- ⊠ DID NOT SEARCH, NOT A PART
- C CALC FROM RECORD MAP
- (NO.) O.C.F.C.D. PARCEL
- R RECORD REFERENCE

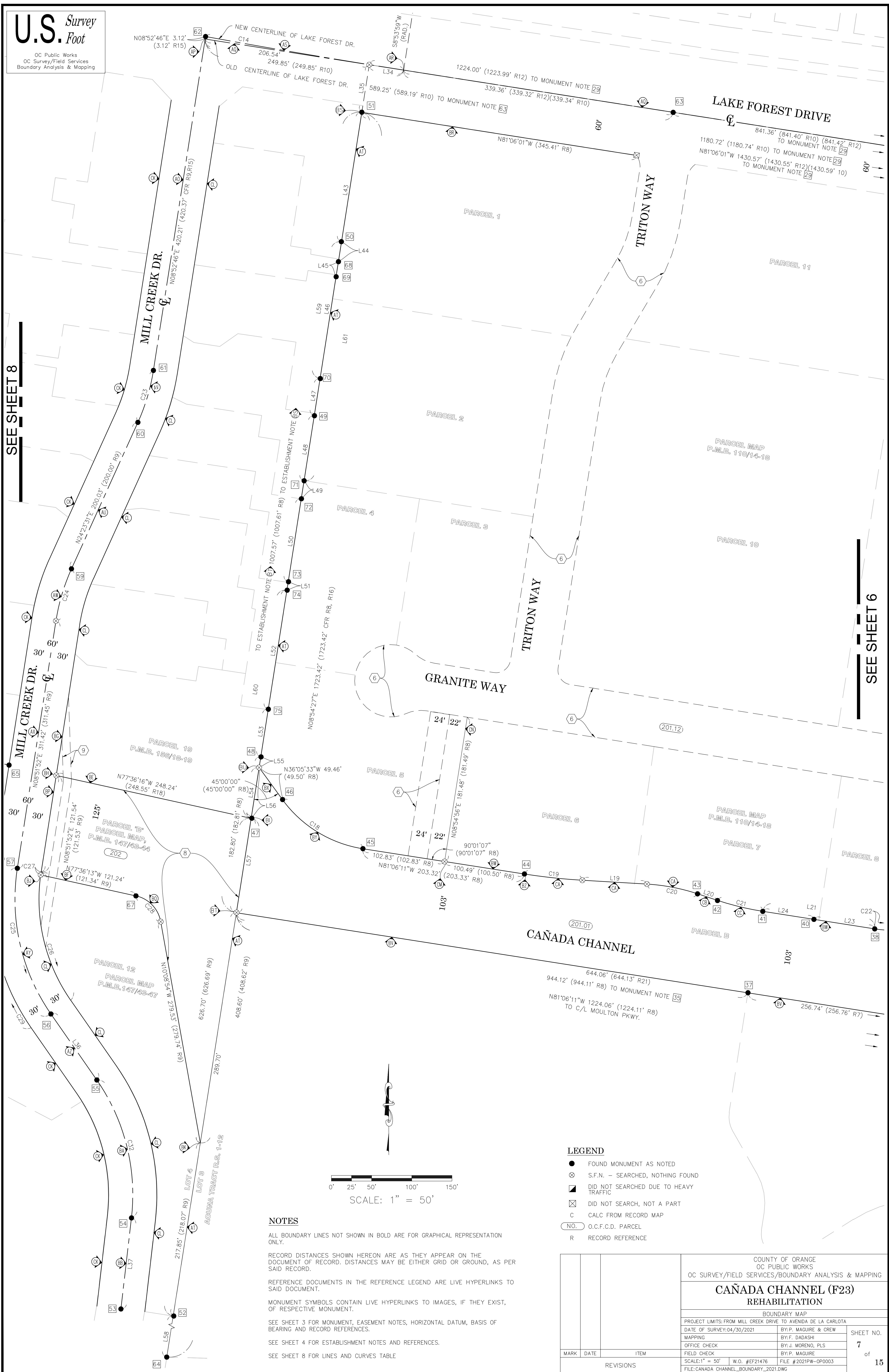
U.S. Survey

Foot

OC Public Works  
OC Survey/Field Services  
Boundary Analysis & Mapping

		COUNTY OF ORANGE OC PUBLIC WORKS OC SURVEY/FIELD SERVICES/BOUNDARY ANALYSIS & MAPPING			
		CAÑADA CHANNEL (F23) REHABILITATION			
		BOUNDARY MAP			
		PROJECT LIMITS: FROM MILL CREEK DRIVE TO AVENIDA DE LA CARLOTA			
		DATE OF SURVEY: 04/30/2021		BY: P. MAGUIRE & CREW	
MAPPING		BY: F. DADASHI			
OFFICE CHECK		BY: J. MORENO, PLS			
FIELD CHECK		BY: P. MAGUIRE			
MARK	DATE	ITEM	SCALE: 1" = 50'      W.O. #EF21476      FILE #2021PW-OP0003		
REVISIONS			FILE: CANADA_CHANNEL_BOUNDARY_2021.DWG		





### LEGEND

- |     |                                       |
|-----|---------------------------------------|
| ●   | FOUND MONUMENT AS NOTED               |
| ⊗   | S.F.N. - SEARCHED, NOTHING FOUND      |
| ■   | DID NOT SEARCHED DUE TO HEAVY TRAFFIC |
| ⊠   | DID NOT SEARCH, NOT A PART            |
| C   | CALC FROM RECORD MAP                  |
| NO. | O.C.F.C.D. PARCEL                     |
| R   | RECORD REFERENCE                      |

## NOTES

ALL BOUNDARY LINES NOT SHOWN IN BOLD ARE FOR GRAPHICAL REPRESENTATION ONLY.

RECORD DISTANCES SHOWN HEREON ARE AS THEY APPEAR ON THE DOCUMENT OF RECORD. DISTANCES MAY BE EITHER GRID OR GROUND, AS PER SAID RECORD.

REFERENCE DOCUMENTS IN THE REFERENCE LEGEND ARE LIVE HYPERLINKS TO SAID DOCUMENT.

MONUMENT SYMBOLS CONTAIN LIVE HYPERLINKS TO IMAGES, IF THEY EXIST,  
OF RESPECTIVE MONUMENT.

SEE SHEET 3 FOR MONUMENT, EASEMENT NOTES, HORIZONTAL DATUM, BASIS OF BEARING AND RECORD REFERENCES.

SEE SHEET 4 FOR ESTABLISHMENT NOTES AND REFERENCES.

SEE SHEET 8 FOR LINES AND CURVES TABLE

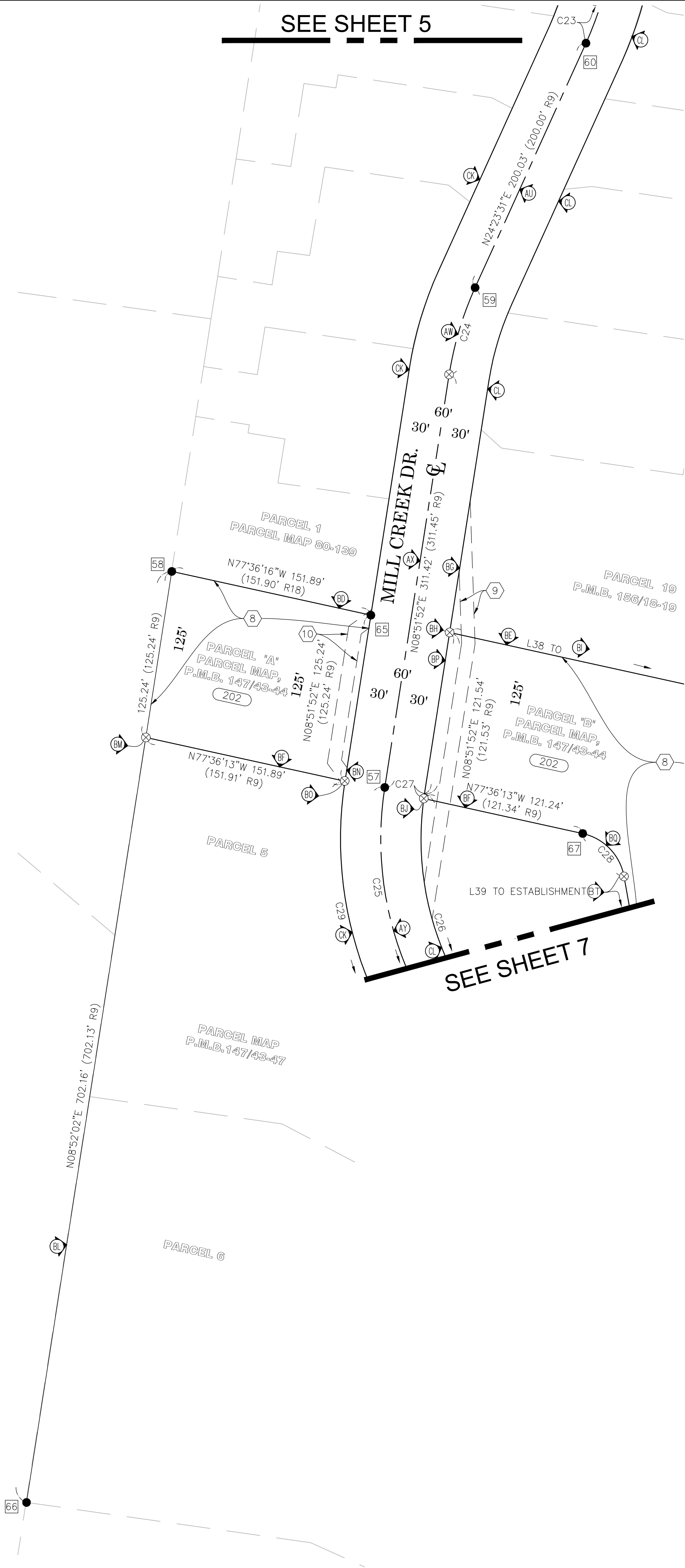
			COUNTY OF ORANGE OC PUBLIC WORKS OC SURVEY/FIELD SERVICES/BOUNDARY ANALYSIS & MAPPING	
			<b>CAÑADA CHANNEL (F23)</b> <b>REHABILITATION</b>	
			BOUNDARY MAP	
			PROJECT LIMITS: FROM MILL CREEK DRIVE TO AVENIDA DE LA CARLOTA	
			DATE OF SURVEY: 04/30/2021	BY: P. MAGUIRE & CREW
			MAPPING	BY: F. DADASHI
			OFFICE CHECK	BY: J. MORENO, PLS
MARK	DATE	ITEM	FIELD CHECK	BY: P. MAGUIRE
REVISIONS			SCALE: 1" = 50'	W.O. #EF21476
			FILE: CANADA_CHANNEL_BOUNDARY_2021.DWG	
			FILE #2021PW-OP0003	SHEET NO. <div style="text-align: center; font-size: 2em;">7</div> of <div style="text-align: center; font-size: 2em;">15</div>



LINE TABLE			
LINE #	BEARING	MEASURED DISTANCE	RECORD DISTANCE
L1	N81°08'35"E	42.59'	(42.56' R1)
L2	N81°08'35"E	41.67'	(41.77' R1)
L3	N05°41'02"W	60.68'	(60.68' R1)
L4	N84°18'58"E	88.71'	(88.71' R1)
L5	N81°02'58"E	57.60'	(57.60' R1)
L6	N35°13'54"W	3.00'	(3.00' R1)
L7	N54°46'06"E	10.22'	(10.22' R1)
L8	N79°50'10"E	60.52'	(60.42' R1)
L9	N79°50'10"E	29.41'	(29.31' R5)
L10	N81°05'56"W	40.00'	(40.00' R1,R5)
L11	N08°53'48"E	26.40'	(26.44' R1)
L12	N81°06'09"W	40.00'	(40.00' R1)
L13	N81°05'56"W	40.00'	(40.00' R1,R5)
L14	N08°53'48"E	26.40'	(26.44' R1)
L15	N81°06'09"W	40.00'	(40.00' R1)
L16	N81°05'47"W	60.00'	(60.00' R5)
L17	N81°05'47"W	60.00'	(60.00' R8)
L18	N81°06'11"W	60.00'	(60.00' R8)
L19	N86°37'05"W	80.45'	(80.45' R8)
L20	N71°40'57"W	26.08'	(26.08' R8)
L21	N81°06'11"W	140.86'	(140.88' R8)
L23	N81°06'11"W	76.53'	(76.50' R8)
L24	N81°06'11"W	64.34'	(64.38' R8)
L25	N81°03'06"E	77.09'	(77.28' R1)
L26	N08°53'48"E	83.41'	(83.44' R1)
L27	N08°53'48"E	57.00'	(57.00' R1)
L28	N08°54'09"E	114.07'	(114.00 R1)
L29	N08°54'09"E	114.07'	(114.00 R1)
L30	N08°54'09"E	86.00'	(86.00' R1)
L31	N08°54'13"E	44.29'	(44.21' R5)

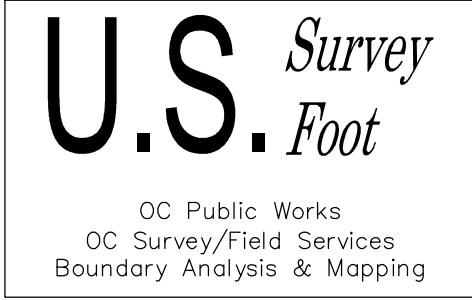
LINE TABLE			
LINE #	BEARING	MEASURED DISTANCE	RECORD DISTANCE
L32	N53°54'20"E	84.85'	(84.85' R4)
L33	N08°53'49"E	65.00'	(65.00' R8)
L34	N81°06'01"W	43.28'	(43.26' R10)
L35	N08°54'27"E	60.00'	(60.00' R10)
L36	N34°48'36"W	100.00'	(100.00' R9)
L37	N06°36'24"E	114.04'	(114.00' R9)
L38	N77°36'16"W	248.24'	(248.55' R18)
L39	N10°08'54"W	279.53'	(279.74' R9)
L40	N81°06'11"W	256.74'	(256.76' R7)
L41	N80°11'47"W	14.99'	(15.02' R22)
L42	N80°11'47"W	37.92'	(37.96' R24)
L43	N08°54'27"E	163.01'	(163.25' R9)
L44	N08°54'27"E	25.17'	N/A
L45	N08°54'27"E	18.94'	N/A
L46	N08°54'27"E	172.28'	N/A
L47	N08°54'27"E	46.76'	N/A
L48	N08°54'27"E	81.92'	N/A
L49	N08°54'27"E	22.60'	N/A
L50	N08°54'27"E	104.47'	N/A
L51	N08°54'27"E	10.64'	N/A
L52	N08°54'27"E	149.84'	N/A
L53	N08°54'27"E	60.03'	N/A
L54	N08°54'27"E	77.10'	N/A
L55	N08°54'27"E	13.45'	N/A
L56	N08°54'27"E	63.65'	N/A
L57	N08°54'27"E	119.16'	N/A
L58	N08°54'27"E	208.07'	N/A
L59	N08°54'27"E	172.28'	(172.00' R9)
L60	N08°54'27"E	286.97'	(287.18' R9)
L61	N08°54'27"E	463.74'	(463.91' R8)

CURVE TABLE						
CURVE #	DELTA	RADIUS	LENGTH	RECORD DELTA	RECORD RADIUS	RECORD LENGTH
C1	66°21'22"	234.99'	272.15'	(66°21'22" R22)	(235.00' R22)	(272.16' R22)
C2	24°39'39"	264.99'	114.06'	(24°39'39" R1)	(265.00' R1)	(114.06' R1)
C3	23°24'04"	264.99'	108.23'	(23°24'02" R1)	(265.00' R1)	(108.23' R1)
C4	17°50'38"	455.98'	142.01'	(17°50'38" R1)	(456.00' R1)	(142.01' R1)
C5	17°50'38"	545.98'	170.04'	(17°50'38" R1)	(546.00' R1)	(170.04' R1)
C6	51°20'35"	90.00'	80.65'	(51°18'34" R1)	(90.00' R1)	(80.60' R1)
C7	17°50'46"	423.98'	132.06'	(17°50'38" R1)	(424.00' R1)	(132.05' R1)
C8	26°16'52"	173.99'	79.81'	(26°16'52" R1)	(174.00' R1)	(79.81' R1)
C9	25°23'48"	14.00'	6.21'	(25°01'50" R1)	(14.00' R1)	(6.12' R1)
C10	21°51'44"	274.99'	104.93'	(21°50'56" R1)	(275.00' R1)	(104.87' R1)
C11	16°49'29"	274.99'	80.75'	(16°50'30" R1)	(275.00' R1)	(80.83' R1)
C12	13°45'07"	174.00'	41.76'	(13°45'07" R5)	(174.00' R5)	(41.76' R5)
C13	27°57'08"	14.00'	6.83'	(27°30'35" R5)	(14.00' R5)	(6.72' R5)
C14	1°25'54"	9999.60'	249.88'	(01°25'54" R10)	(1000.00' R5)	(249.87' R5)
C15	0°07'01"	759.97'	1.55'	(00°07'11" R1)	(760.00' R1)	(1.59' R1)
C16	6°30'36"	839.97'	95.44'	(06°30'27" R1)	(840.00' R1)	(95.40' R1)
C17	6°04'42"	759.97'	80.62'	(06°04'43" R1)	(760.00' R1)	(80.63' R1)
C18	45°00'38"	153.00'	120.19'	(44°59'46" R8)	(153.00' R8)	(120.16' R8)
C19	5°30'54"	752.99'	72.48'	(05°30'54" R8)	(753.00' R8)	(72.48' R8)
C20	14°56'08"	246.99'	64.38'	(14°56'08" R8)	(247.00' R8)	(64.39' R8)
C21	9°25'14"	352.99'	58.04'	(09°25'14" R8)	(353.00' R8)	(58.04' R8)
C22	39°21'06"	153.00'	105.08'	(39°21'03" R8)	(153.00' R8)	(105.08' R8)
C23	15°30'46"	249.99'	67.68'	(15°30'15" R9)	(250.00' R9)	(67.65' R9)
C24	15°31'39"	249.99'	67.75'	(15°31'39" R9)	(250.00' R9)	(67.75' R9)
C25	43°40'26"	249.99'	190.56'	(43°40'06" R9)	(250.00' R9)	(190.54' R9)
C26	41°25'54"	249.99'	180.78'	(41°25'00" R9)	(250.00' R9)	(180.71' R9)
C27	0°57'59"	219.99'	3.71'	(0°58'01" R9)	(220.00' R9)	(3.71' R9)
C28	67°27'18"	40.00'	47.09'	(67°23'04" R9)	(40.00' R9)	(47.04' R9)
C29	43°40'05"	279.99'	213.39'	(40°40'06" R9)	(280.00' R9)	(213.40' R9)
C30	15°54'05"	576.98'	160.13'	(15°54'05" R5)	(577.00' R5)	(160.13' R5)
C31	19°04'10"	544.98'	181.38'	(19°04'10" R5)	(545.00' R5)	(181.39' R5)
C32	41°25'00"	249.99'	180.71'	(41°25'00" R9)	(250.00' R9)	(180.71' R9)
C35	22°46'23"	324.99'	129.17'	(22°46'24" R22)	(325.00' R22)	(129.18' R22)



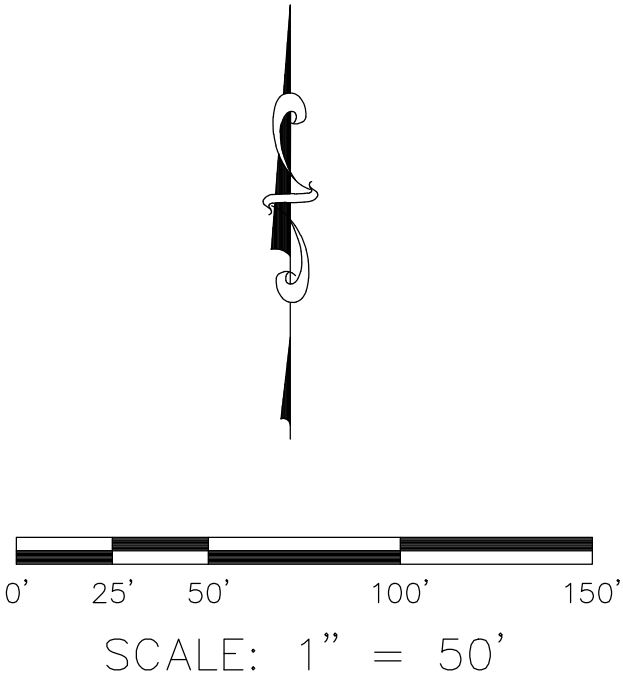
NOTES

- ALL BOUNDARY LINES NOT SHOWN IN BOLD ARE FOR GRAPHICAL REPRESENTATION ONLY.
- RECORD DISTANCES SHOWN HEREON ARE AS THEY APPEAR ON THE DOCUMENT OF RECORD. DISTANCES MAY BE EITHER GRID OR GROUND, AS PER SAID RECORD.
- REFERENCE DOCUMENTS IN THE REFERENCE LEGEND ARE LIVE HYPERLINKS TO SAID DOCUMENT.
- MONUMENT SYMBOLS CONTAIN LIVE HYPERLINKS TO IMAGES, IF THEY EXIST, OF RESPECTIVE MONUMENT.
- SEE SHEET 3 FOR MONUMENT, EASEMENT NOTES, HORIZONTAL DATUM, BASIS OF BEARING AND RECORD REFERENCES.
- SEE SHEET 4 FOR ESTABLISHMENT NOTES AND REFERENCES.



LEGEND

- FOUND MONUMENT AS NOTED
- ⊗ S.F.N. - SEARCHED, NOTHING FOUND
- DID NOT SEARCHED DUE TO HEAVY TRAFFIC
- ⊠ DID NOT SEARCH, NOT A PART
- C CALC FROM RECORD MAP
- NO. O.C.F.C.D. PARCEL
- R RECORD REFERENCE



			COUNTY OF ORANGE OC PUBLIC WORKS OC SURVEY/FIELD SERVICES/BOUNDARY ANALYSIS & MAPPING	
			CAÑADA CHANNEL (F23) REHABILITATION	
			BOUNDARY MAP	
			PROJECT LIMITS: FROM MILL CREEK DRIVE TO AVENIDA DE LA CARLOTA	
			DATE OF SURVEY:04/30/2021	BY:P. MAGUIRE & CREW
			MAPPING	BY:J. DADASH
			OFFICE CHECK	BY:J. MORENO, PLS
			FIELD CHECK	BY:P. MAGUIRE
			SCALE:1" = 50'	W.O. #EF21476
			FILE: #2021PW-OP0003	
			FILE:CANADA_CHANNEL_BOUNDARY_2021.DWG	
MARK	DATE	ITEM	SHEET NO. 8 of 15	
REVISIONS				





0.18' N'LY OF R/W

APN 588-081-21  
23331 MOULTON PKWY

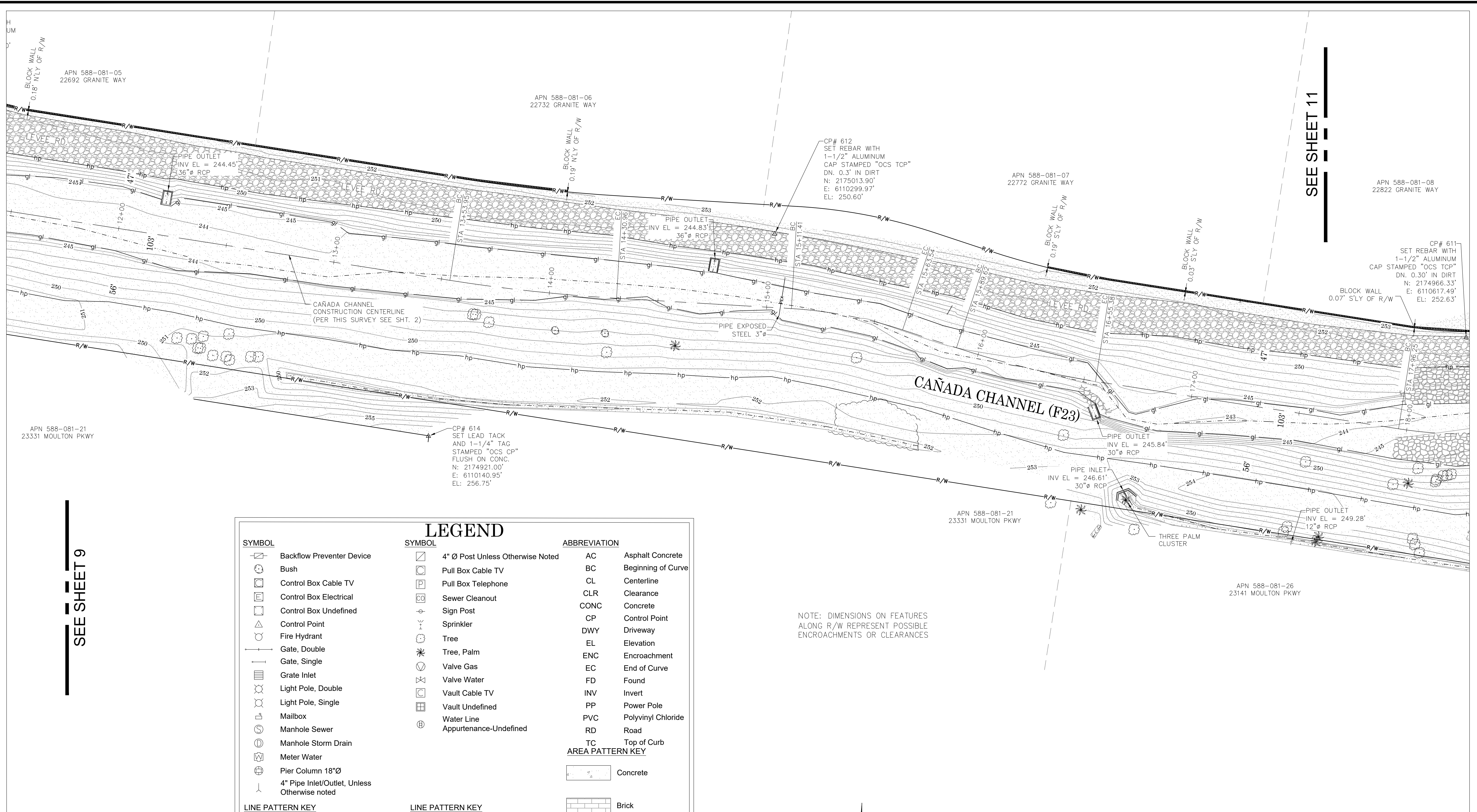
0' 10' 20' 40' 60'

SCALE: 1" = 20'

CONTOUR INTERVAL: 1'

			COUNTY OF ORANGE OC PUBLIC WORKS OC SURVEY/FIELD SERVICES/BOUNDARY ANALYSIS & MAPPING		
			<b>CAÑADA CHANNEL (F23) REHABILITATION</b>		
			TOPOGRAPHIC MAP		
			PROJECT LIMITS: FROM MILL CREEK RD. TO AVENIDA DE LA CARLOTA		
			DATE OF SURVEY: 03/18/2021	BY: P. MAGUIRE & CREW	
			MAPPING	BY: I. ISLAS	
MARK	DATE	ITEM	OFFICE CHECK	BY: J. MORENO, PLS	SHEET NO.  <b>9</b>  of  <b>15</b>
			FIELD CHECK	BY: P. MAGUIRE & CREW	
			SCALE: 1" = 20'	W.O. #EF21476	
			FILE # 2021PW-0P0003		
		CAÑADA CHANNEL_TOPO_2021.DWG			





SEE SHEET 9

SEE SHEET 11

## LEGEND

### SYMBOL

- Backflow Preventer Device
- Bush
- Control Box Cable TV
- Control Box Electrical
- Control Box Undefined
- Control Point
- Fire Hydrant
- Gate, Double
- Gate, Single
- Grate Inlet
- Light Pole, Double
- Light Pole, Single
- Mailbox
- Manhole Sewer
- Manhole Storm Drain
- Meter Water
- Pier Column 18"Ø
- 4" Pipe Inlet/Outlet, Unless Otherwise noted

### LINE PATTERN KEY

- Block Wall
- Building Outline
- Bush Row Outline
- Centerline
- Concrete Wall
- Edge of Concrete
- Edge of Asphalt Pavement
- Fence Chainlink
- Fence Wood

### SYMBOL

- 4" Ø Post Unless Otherwise Noted
- Pull Box Cable TV
- Pull Box Telephone
- Sewer Cleanout
- Sign Post
- Sprinkler
- Tree
- Tree, Palm
- Valve Gas
- Valve Water
- Vault Cable TV
- Vault Undefined
- Water Line
- Appurtenance-Undefined

### LINE PATTERN KEY

- Fence Wrought Iron
- Flowline
- Grade Line
- Hand Rail
- Hinge Point
- Retaining Wall Wood
- Right of Way

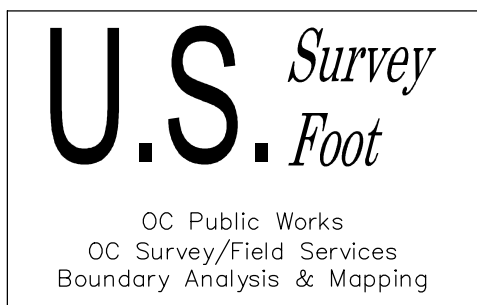
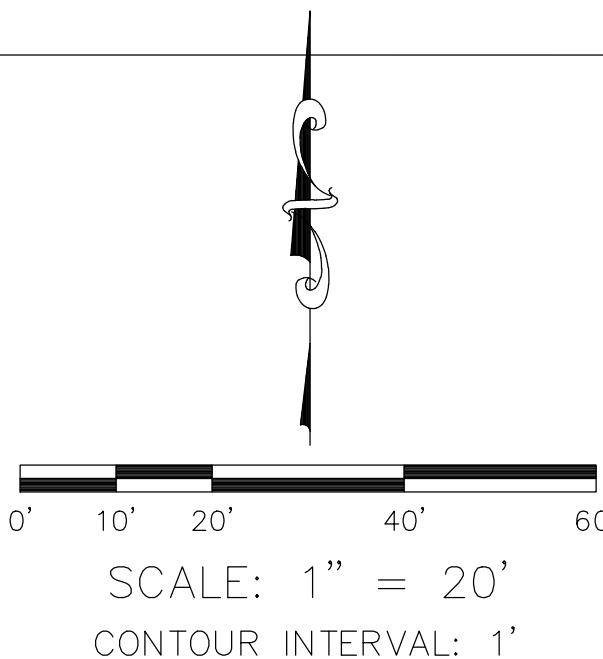
### ABBREVIATION

- AC Asphalt Concrete
- BC Beginning of Curve
- CL Centerline
- CLR Clearance
- CONC Concrete
- CP Control Point
- DWY Driveway
- EL Elevation
- ENC Encroachment
- EC End of Curve
- FD Found
- INV Invert
- PP Power Pole
- PVC Polyvinyl Chloride
- RD Road
- TC Top of Curb

### AREA PATTERN KEY

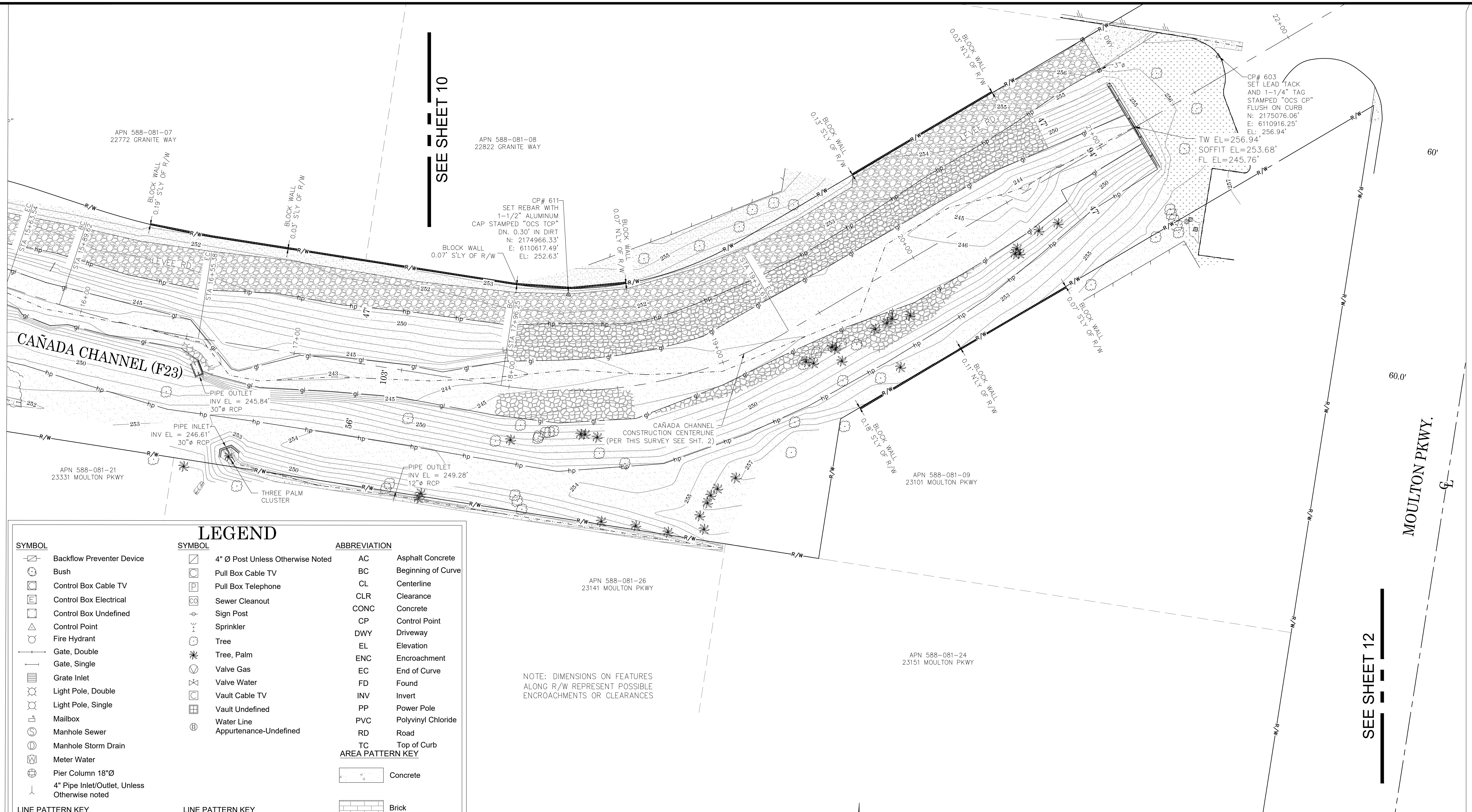
- Concrete
- Brick
- Dirt
- Grass
- Gravel
- Rip Rap

NOTE: DIMENSIONS ON FEATURES ALONG R/W REPRESENT POSSIBLE ENCROACHMENTS OR CLEARANCES



			COUNTY OF ORANGE OC PUBLIC WORKS OC SURVEY/FIELD SERVICES/BOUNDARY ANALYSIS & MAPPING		
			CAÑADA CHANNEL (F23) REHABILITATION		
			TOPOGRAPHIC MAP		
			PROJECT LIMITS: FROM MILL CREEK RD. TO AVENIDA DE LA CARLOTA		
			DATE OF SURVEY:03/18/2021	BY:P. MAGUIRE & CREW	SHEET NO.  10 of 15
			MAPPING	BY:I. ISLAS	
			OFFICE CHECK	BY:J. MORENO, PLS	
			FIELD CHECK	BY:P. MAGUIRE & CREW	
MARK	DATE	ITEM	SCALE:1" = 20'	W.O. #EF21476	FILE #2021PW-OP0003
REVISIONS			FILE:CANADA_CHANNEL_TOPO_2021.DWG		



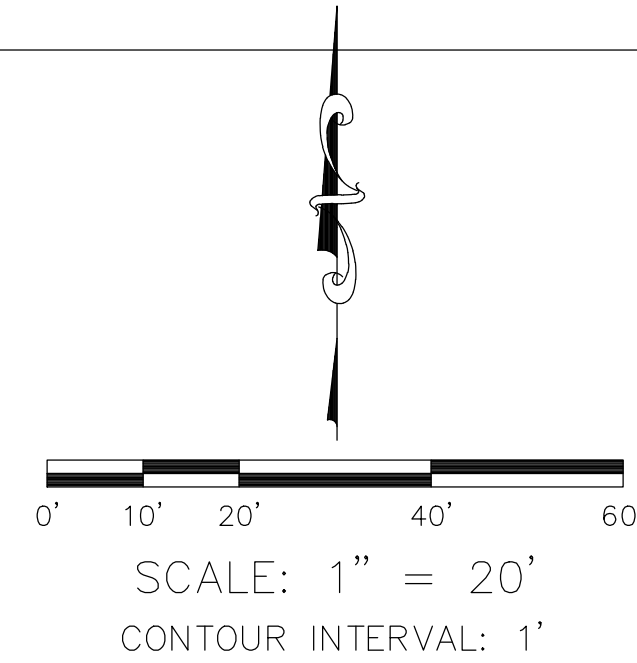


### LEGEND

SYMBOL	SYMBOL	ABBREVIATION
		AC Asphalt Concrete
		BC Beginning of Curve
		CL Centerline
		CLR Clearance
		CONC Concrete
		CP Control Point
		EL Elevation
		ENC Encroachment
		EC End of Curve
		FD Found
		INV Invert
		PP Power Pole
		PVC Polyvinyl Chloride
		RD Road
		TC Top of Curb

LINE PATTERN KEY	
	Block Wall
	Building Outline
	Bush Row Outline
	Centerline
	Concrete Wall
	Edge of Concrete
	Edge of Asphalt Pavement
	Fence Chainlink
	Fence Wood
	Fence Wrought Iron
	Flowline
	Grade Line
	Hand Rail
	Hinge Point
	Retaining Wall Wood
	Right of Way

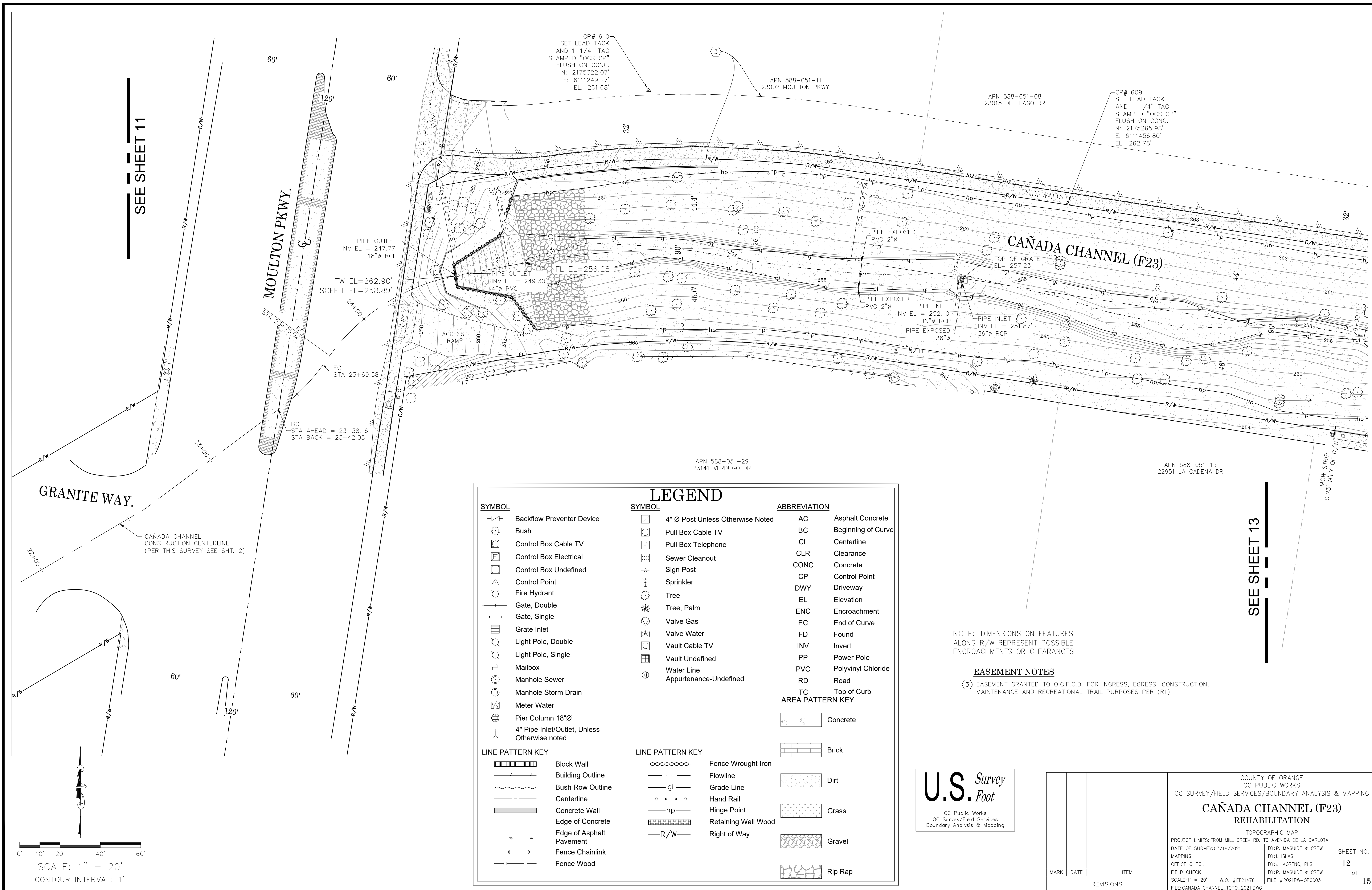
AREA PATTERN KEY	
	Concrete
	Brick
	Dirt
	Grass
	Gravel
	Rip Rap



**U.S. Survey**  
Foot  
OC Public Works  
OC Survey/Field Services  
Boundary Analysis & Mapping

			COUNTY OF ORANGE OC PUBLIC WORKS OC SURVEY/FIELD SERVICES/BOUNDARY ANALYSIS & MAPPING			
			CAÑADA CHANNEL (F23) REHABILITATION			
			TOPOGRAPHIC MAP			
			PROJECT LIMITS: FROM MILL CREEK RD. TO AVENIDA DE LA CARLOTA			
			DATE OF SURVEY:03/18/2021		BY:P. MAGUIRE & CREW	
			MAPPING		BY:I. ISLAS	
			OFFICE CHECK		BY:J. MORENO, PLS	
			FIELD CHECK		BY:P. MAGUIRE & CREW	
MARK			DATE		ITEM	
			REVISIONS			
			SCALE:1" = 20'		W.O. #EF21476	
			FILE:CANADA_CHANNEL_TOPO_2021.DWG			
					FILE #2021PW-OP0003	
					SHEET NO. 11 of 15	

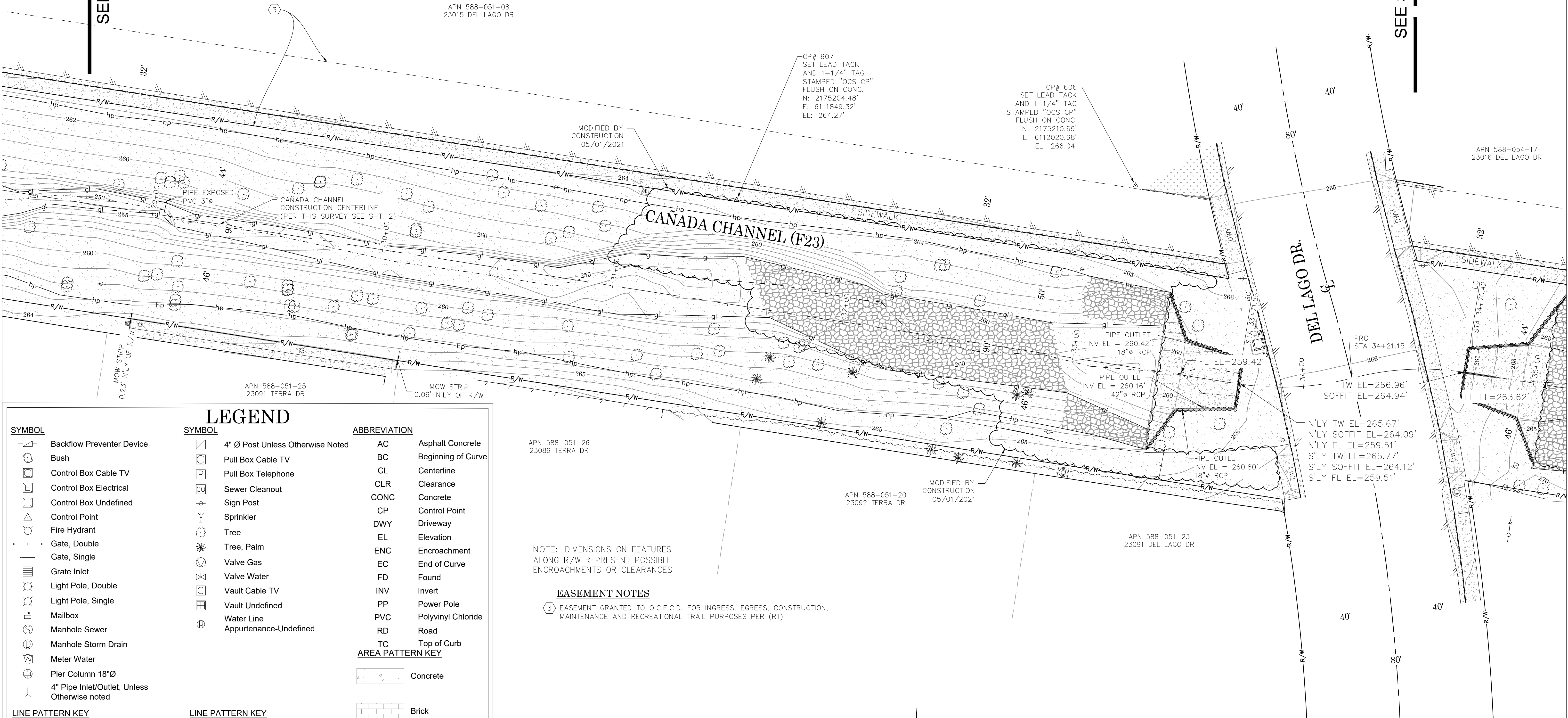






SEE SHEET 12

SEE SHEET 14



**SYMBOL**

- Backflow Preventer Device
- Bush
- Control Box Cable TV
- Control Box Electrical
- Control Box Undefined
- Control Point
- Fire Hydrant
- Gate, Double
- Gate, Single
- Grate Inlet
- Light Pole, Double
- Light Pole, Single
- Mailbox
- Manhole Sewer
- Manhole Storm Drain
- Meter Water
- Pier Column 18"Ø
- 4" Pipe Inlet/Outlet, Unless Otherwise noted

**SYMBOL**

- 4" Ø Post Unless Otherwise Noted
- Pull Box Cable TV
- Pull Box Telephone
- Sewer Cleanout
- Sign Post
- Sprinkler
- Tree
- Tree, Palm
- Valve Gas
- Valve Water
- Vault Cable TV
- Vault Undefined
- Water Line
- Appurtenance-Undefined

**ABBREVIATION**

- AC Asphalt Concrete
- BC Beginning of Curve
- CL Centerline
- CLR Clearance
- CONC Concrete
- CP Control Point
- DWY Driveway
- EL Elevation
- ENC Encroachment
- EC End of Curve
- FD Found
- INV Invert
- PP Power Pole
- PVC Polyvinyl Chloride
- RD Road
- TC Top of Curb

**AREA PATTERN KEY**

- Concrete
- Brick
- Dirt
- Grass
- Gravel
- Rip Rap

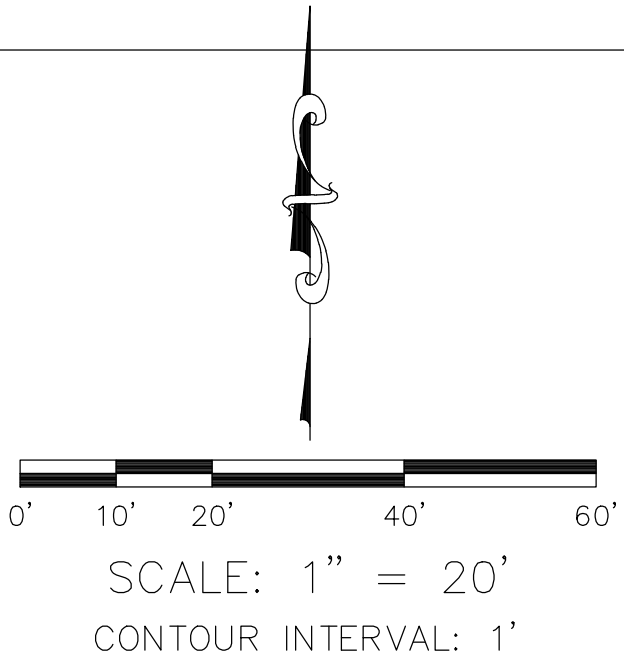
**LINE PATTERN KEY**

- Block Wall
- Building Outline
- Bush Row Outline
- Centerline
- Concrete Wall
- Edge of Concrete
- Edge of Asphalt Pavement
- Fence Chainlink
- Fence Wood
- Fence Wrought Iron
- Flowline
- Grade Line
- Hand Rail
- Hinge Point
- Retaining Wall Wood
- Right of Way

NOTE: DIMENSIONS ON FEATURES  
ALONG R/W REPRESENT POSSIBLE  
ENCROACHMENTS OR CLEARANCES

**EASEMENT NOTES**

③ EASEMENT GRANTED TO O.C.F.C.D. FOR INGRESS, EGRESS, CONSTRUCTION,  
MAINTENANCE AND RECREATIONAL TRAIL PURPOSES PER (R1)

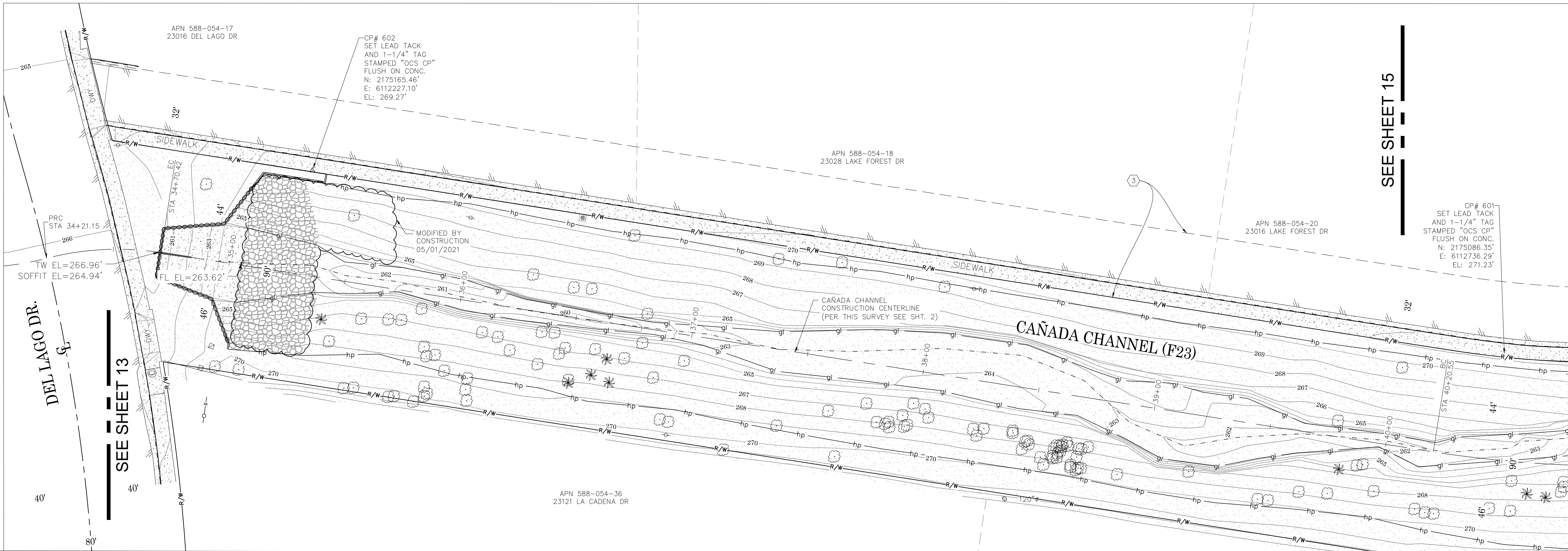


**U.S. Survey**

OC Public Works  
OC Survey/Field Services  
Boundary Analysis & Mapping

			COUNTY OF ORANGE OC PUBLIC WORKS OC SURVEY/FIELD SERVICES/BOUNDARY ANALYSIS & MAPPING					
			CAÑADA CHANNEL (F23) REHABILITATION					
			TOPOGRAPHIC MAP					
			PROJECT LIMITS: FROM MILL CREEK RD. TO AVENIDA DE LA CARLOTA					
			DATE OF SURVEY: 03/18/2021		BY: P. MAGUIRE & CREW		SHEET NO.  13 of 15	
			MAPPING		BY: I. ISLAS			
			OFFICE CHECK		BY: J. MORENO, PLS			
MARK	DATE	ITEM	FIELD CHECK		BY: P. MAGUIRE & CREW			
			SCALE: 1" = 20'		W.O. #EF21476	FILE #2021PW-OP0003		
		REVISIONS	FILE: CANADA_CHANNEL_TOPO_2021.DWG					





### LEGEND

SYMBOL	SYMBOL	ABBREVIATION
		AC Asphalt Concrete
		BC Beginning of Curve
		CL Centerline
		CLR Clearance
		CONC Concrete
		CP Control Point
		DWY Driveway
		EL Elevation
		ENC Encroachment
		EC End of Curve
		FD Found
		INV Invert
		PP Power Pole
		PVC Polyvinyl Chloride
		RD Road
		TC Top of Curb

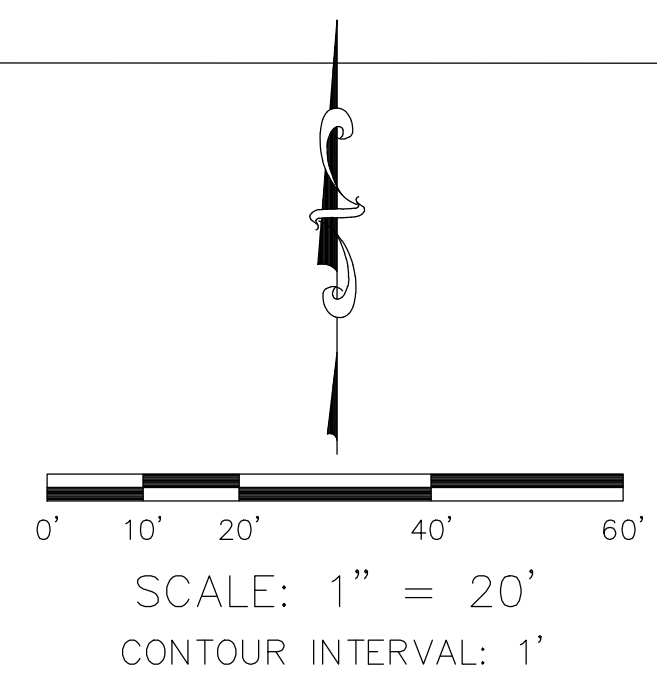
LINE PATTERN KEY	LINE PATTERN KEY

AREA PATTERN KEY

NOTE: DIMENSIONS ON FEATURES  
ALONG R/W REPRESENT POSSIBLE  
ENCROACHMENTS OR CLEARANCES

**EASEMENT NOTES**

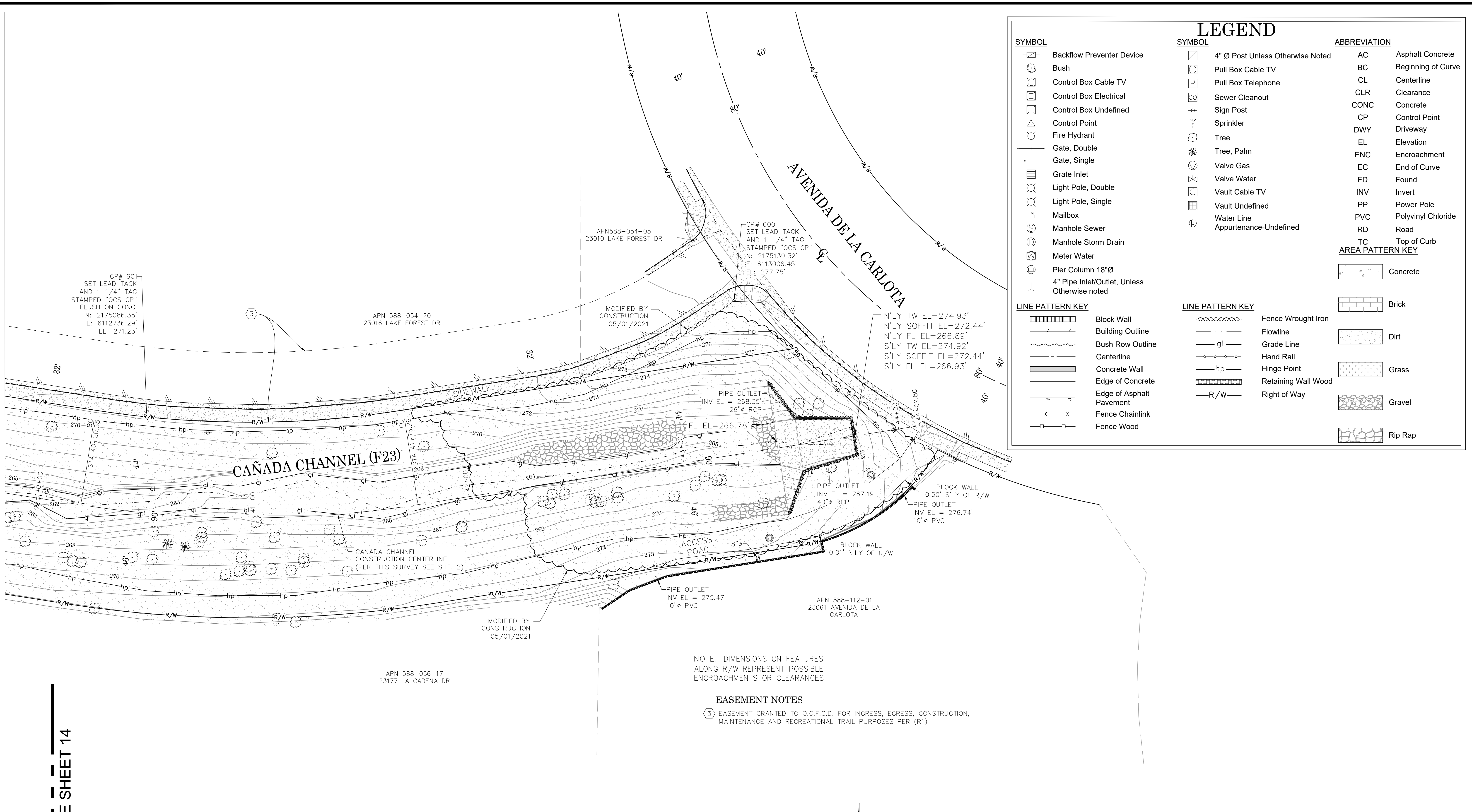
3 EASEMENT GRANTED TO O.C.F.C.D. FOR INGRESS, EGRESS, CONSTRUCTION,  
MAINTENANCE AND RECREATIONAL TRAIL PURPOSES PER (R1)



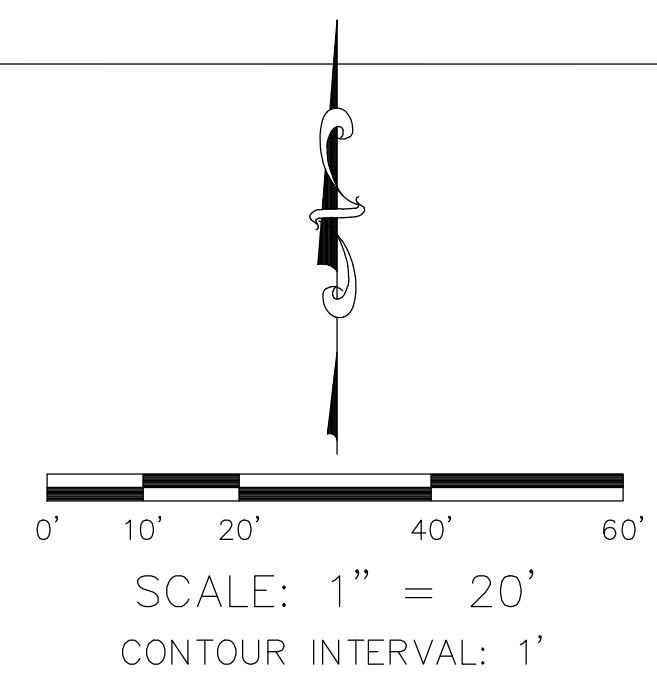
**U.S. Survey**  
Foot  
OC Public Works  
OC Survey/Field Services  
Boundary Analysis & Mapping

				COUNTY OF ORANGE OC PUBLIC WORKS OC SURVEY/FIELD SERVICES/BOUNDARY ANALYSIS & MAPPING	
		CAÑADA CHANNEL (F23) REHABILITATION			
		TOPOGRAPHIC MAP			
		PROJECT LIMITS: FROM MILL CREEK RD. TO AVENIDA DE LA CARLOTA			
		DATE OF SURVEY:03/18/2021		BY:P. MAGUIRE & CREW	
		MAPPING		BY:I. ISLAS	
		OFFICE CHECK		BY:J. MORENO, PLS	
		FIELD CHECK		BY:P. MAGUIRE & CREW	
		SCALE:1" = 20'		W.O. #EF21476	
		FILE:CAÑADA_CHANNEL_TOPO_2021.DWG		FILE #2021PW-OP0003	
MARK		DATE		ITEM	
		REVISIONS			





SEE SHEET 14



**U.S. Survey**  
*Foot*  
OC Public Works  
OC Survey/Field Services  
Boundary Analysis & Mapping

COUNTY OF ORANGE OC PUBLIC WORKS OC SURVEY/FIELD SERVICES/BOUNDARY ANALYSIS & MAPPING			
CAÑADA CHANNEL (F23) REHABILITATION			
TOPOGRAPHIC MAP			
PROJECT LIMITS: FROM MILL CREEK RD. TO AVENIDA DE LA CARLOTA			
DATE OF SURVEY: 03/18/2021		BY: P. MAGUIRE & CREW	
MAPPING		BY: I. ISLAS	
OFFICE CHECK		BY: J. MORENO, PLS	
FIELD CHECK		BY: P. MAGUIRE & CREW	
SCALE: 1" = 20'		W.O. #EF21476	FILE #2021PW-OP0003
FILE: CANADA_CHANNEL_TOPO_2021.DWG			

MARK	DATE	ITEM
REVISIONS		

SHEET NO.

15

of

15