



OC PUBLIC WORKS DEPARTMENT

JAMES TREADAWAY, DIRECTOR OF PUBLIC WORKS

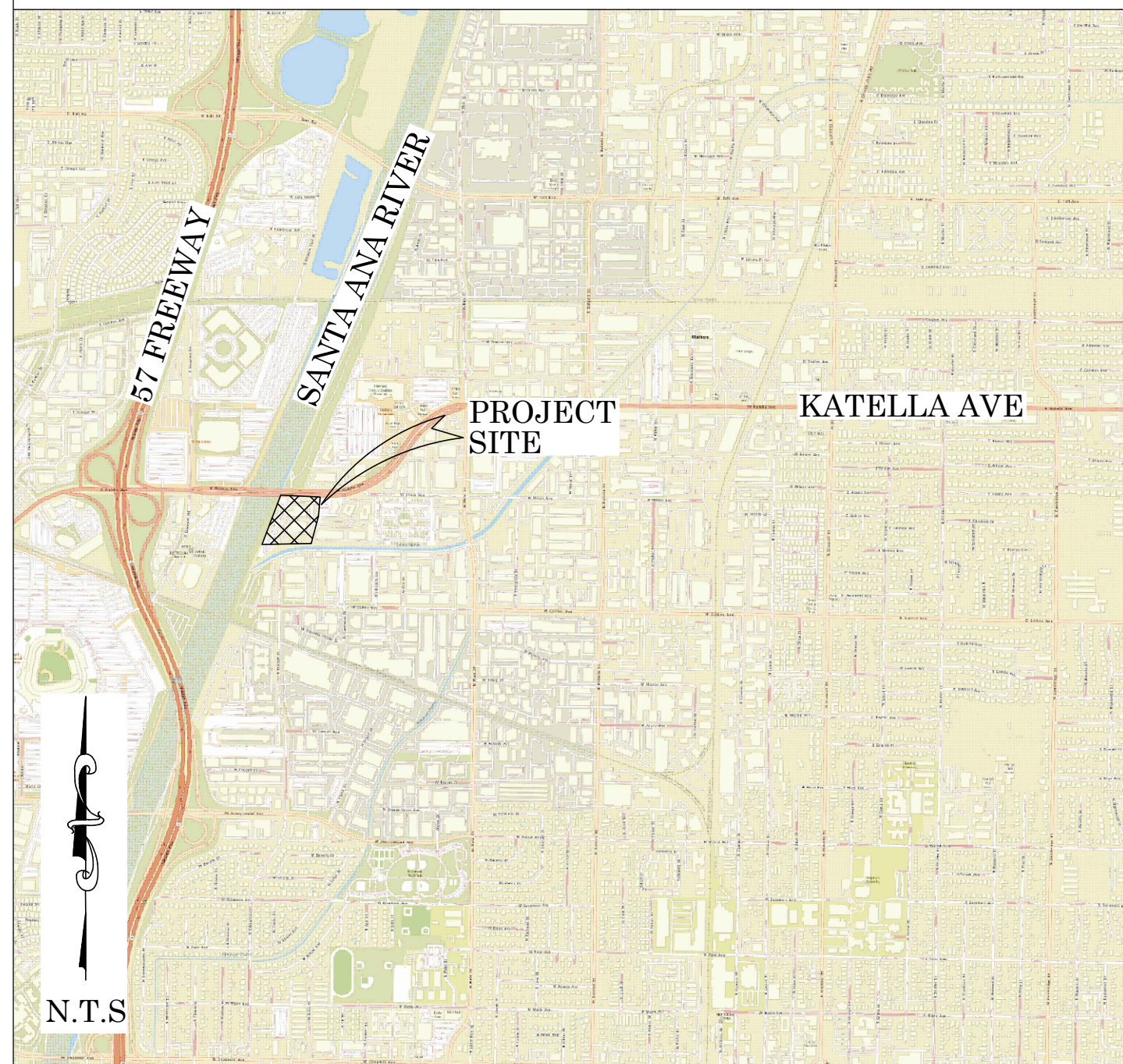
KEVIN HILLS, COUNTY SURVEYOR

OCSD KATELLA RANGE



SITE SURVEY

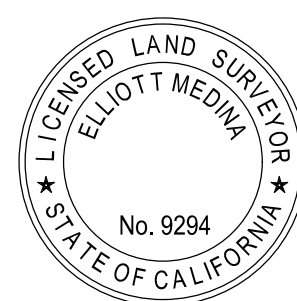
LOCATION MAP



SENIOR LAND SURVEYOR'S CERTIFICATE:

THIS MAP CORRECTLY REPRESENTS A SURVEY MADE BY ME OR UNDER MY DIRECTION IN CONFORMANCE WITH REQUIREMENTS OF THE PROFESSIONAL LAND SURVEYOR'S ACT; THIS 8TH DAY OF OCTOBER, 2020.

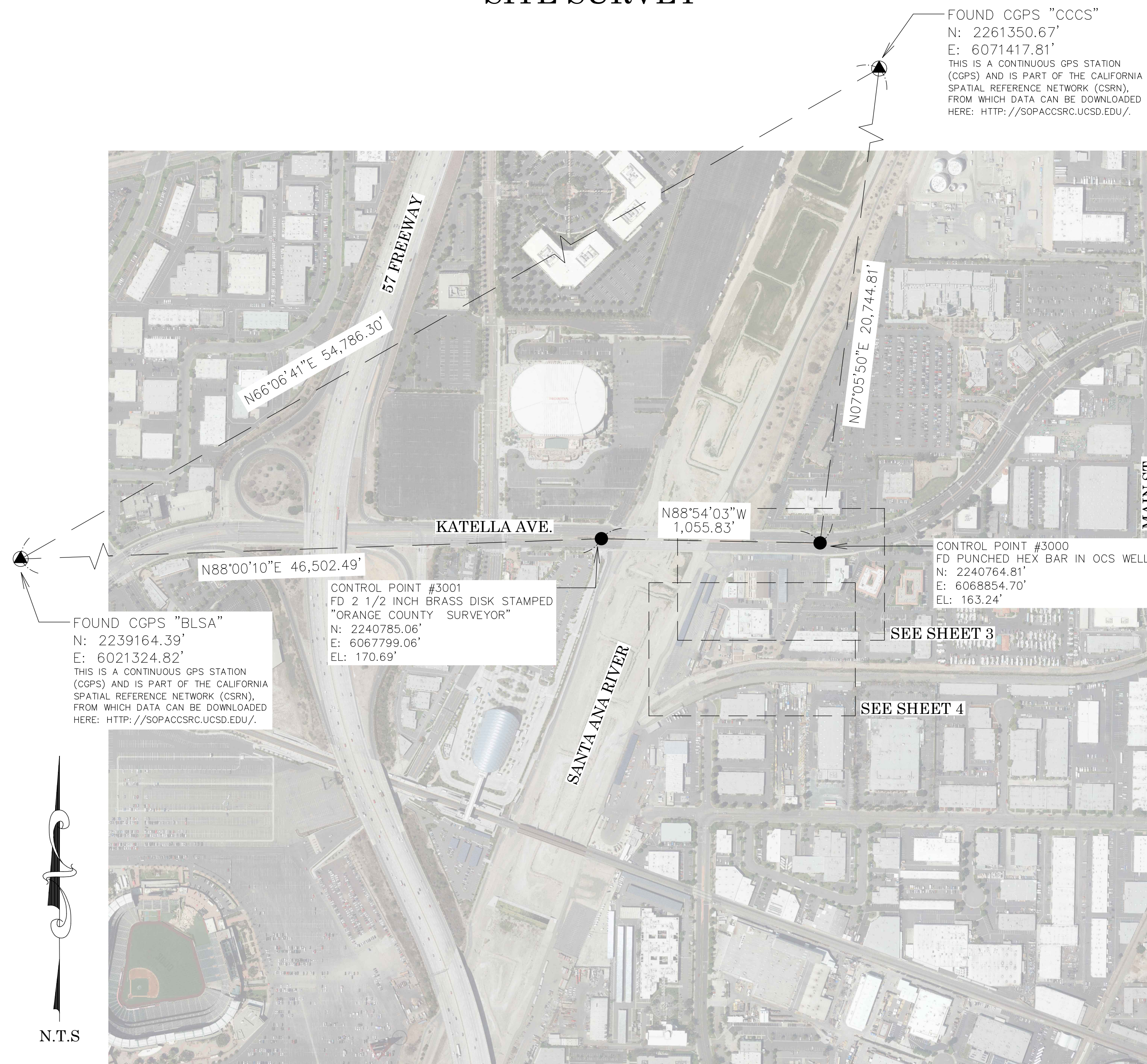
ELLIOTT MEDINA, PLS. SENIOR LAND SURVEYOR



DEPUTY COUNTY SURVEYOR'S STATEMENT:

THIS MAP HAS BEEN EXAMINED IN ACCORDANCE WITH THE PROFESSIONAL LAND SURVEYOR'S ACT; THIS 8TH DAY OF OCTOBER, 2020.

WADE WEAVER, PLS. DEPUTY COUNTY SURVEYOR



BASIS OF BEARINGS

THE BASIS OF BEARINGS FOR THIS SURVEY IS BASED ON THE CALIFORNIA COORDINATE SYSTEM (CCS83), ZONE VI, NAD 83, OCS (2017.50) EPOCH ADJUSTMENT, AS DETERMINED LOCALLY BY A LINE BETWEEN CONTINUOUS GLOBAL POSITIONING STATIONS CGPS STATIONS (BLSA) AND (CCCS) BEING NORTH 66°06'41" EAST AS DERIVED FROM THE COORDINATES PUBLISHED BY THE CALIFORNIA SPATIAL REFERENCE CENTER (CSRC) ALONG WITH DATA SHEETS ON FILE IN THE OFFICE OF THE ORANGE COUNTY SURVEYOR.

HORIZONTAL DATUM

COORDINATES SHOWN ARE BASED ON THE CALIFORNIA COORDINATE SYSTEM (CCS83), ZONE VI, NAD 83, OCS (2017.50) EPOCH ADJUSTMENT.

ALL DISTANCES SHOWN ARE GRID, UNLESS OTHERWISE NOTED. TO OBTAIN GROUND DISTANCES MULTIPLY GRID BY A COMBINED FACTOR OF 1.00001463.

THIS COMBINATION FACTOR WAS DERIVED BY HOLDING CONTROL POINT #3000 N: 2240764.81', E: 6068854.70', ELEVATION: 163.24'

ALL DISTANCES ARE BASED ON THE U.S. SURVEY FOOT.

VERTICAL DATUM

O.C.S. BM. 1L-94-90 ELEV. = 170.599' YEAR LEVELED: 2010

NAVD 1988 (O.C.S. 1995 ADJUSTMENT)

DESCRIPTION: DESCRIBED BY OCS 2002 - FOUND 3 3/4" OCS ALUMINUM BENCHMARK DISK STAMPED "1L-94-90", SET IN THE TOP OF A CONCRETE SIDEWALK. MONUMENT IS LOCATED ON THE NORTHEASTERLY CORNER OF KATELLA AVENUE AND THE SANTA ANA RIVER, SET IN THE NORTHERLY END OF THE EASTERLY ABUTMENT, 60 FT. NORTH OF THE CENTERLINE OF KATELLA AVENUE, AND 0.2 FT. EASTERLY OF THE EASTERLY END OF THE BRIDGE. MONUMENT IS SET LEVEL WITH THE SIDEWALK.

NOTES

THE SURVEY INFORMATION SHOWN HEREON IS TO BE USED FOR TOPOGRAPHIC RELATIONSHIPS ONLY AND IS NOT INTENDED FOR LAND ACQUISITION OR BOUNDARY PURPOSES.

PARCELS SHOWN WITHOUT BEARING AND DISTANCES ARE FOR GRAPHICAL PURPOSES.

A BOUNDARY SURVEY OR TITLE SEARCH WAS NOT PERFORMED.

RIGHT OF WAY SHOWN WAS DERIVED FROM RECORD MAPS AND DOCUMENTS.

SHEET INDEX

SHEET	NO.	DESCRIPTION
SHEET	1	TITLE SHEET
SHEET	2	BOUNDARY MAP
SHEETS	3-4	TOPOGRAPHIC MAP
SHEETS	5-6	UTILITY MAP

PURPOSE OF SURVEY

THE PURPOSE OF THE SURVEY IS TO PROVIDE A TOPOGRAPHIC AND UTILITY MAP FOR THE TRAINING FACILITY.

TOPOGRAPHIC MAPPING PROJECT

			COUNTY OF ORANGE OC PUBLIC WORKS OC SURVEY/FIELD SERVICES/BOUNDARY ANALYSIS & MAPPING				
			OCSD KATELLA RANGE SITE SURVEY				
			TITLE SHEET				
			PROJECT LIMITS: APN 375-361-02, 375-361-20, 375-361-22				
			DATE OF SURVEY: 09/15/2020		BY: R. MACIAS AND CREW		SHEET NO. 1 of 6
			MAPPING		BY: A. VU		
			OFFICE CHECK		BY: E. MEDINA, PLS		
			FIELD CHECK		BY: R. MACIAS, PLS		
			SCALE: N.T.S.		W.O. #EC29908		
			FILE: OCSD KATELLA RANGE_TOPO_2020.DWG		FILE # 2021PW-50001		
MARK	DATE	ITEM					
REVISIONS							

NOTES

A BOUNDARY SURVEY OR TITLE SEARCH WAS NOT PERFORMED.
RIGHT OF WAY SHOWN WAS DERIVED FROM RECORD MAPS AND DOCUMENTS.

ESTABLISHMENT NOTES

- (A) ESTABLISHED THE CENTERLINE OF KATELLA AVE. HOLDING MONUMENTS [1] AND [2] PER (R1).
- (B) ESTABLISHED A POINT ON THE CENTERLINE OF KATELLA AVE. AND THE NORTHEAST CORNER OF LOT 8 OF (R4) BY INTERSECTION BETWEEN ESTABLISHMENT NOTES (A) AND (N) PER (R2).
- (C) ESTABLISHED THE S'LY RIGHT OF WAY OF KATELLA AVE. 60.00' S'LY OF, PERPENDICULAR TO, AND PARALLEL WITH ESTABLISHMENT NOTE (A) PER (R1).
- (D) S.F.N. ESTABLISHED POINT ON S'LY RIGHT OF WAY OF KATELLA AVE. BY INTERSECTION BETWEEN ESTABLISHMENT NOTES (C) AND (N) PER (R1).
- (E) S.F.N. ESTABLISHED ANGLE POINT ON S'LY RIGHT OF WAY OF KATELLA AVE. HOLDING RECORD DISTANCE FROM ESTABLISHMENT NOTE (D) PER (R2).
- (F) ESTABLISHED THE E'LY RIGHT OF WAY OF SANTA ANA RIVER AND THE N'LY RIGHT OF WAY OF KATELLA ROAD BY LEAST SQUARE ADJUSTMENT BETWEEN MONUMENT [5] AND ESTABLISHMENT NOTE (E) PER (R1).
- (G) ESTABLISHED THE E'LY RIGHT OF WAY OF SANTA ANA RIVER HOLDING MONUMENTS [5] AND [7] PER (R1).
- (H) ESTABLISHED THE E'LY RIGHT OF WAY OF SANTA ANA RIVER HOLDING MONUMENTS [7] AND [8] PER (R1).
- (I) ESTABLISHED THE E'LY RIGHT OF WAY OF SANTA ANA RIVER HOLDING MONUMENTS [8] AND [9] PER (R1).
- (J) ESTABLISHED THE E'LY RIGHT OF WAY OF SANTA ANA RIVER HOLDING MONUMENTS [9] AND [10] PER (R1).
- (K) ESTABLISHED THE N'LY RIGHT OF WAY OF COLLINS CHANNEL HOLDING MONUMENTS [10], [12], AND RECORD RADIUS PER (R2).
- (L) ESTABLISHED THE N'LY RIGHT OF WAY OF COLLINS CHANNEL BY DISTANCE-DISTANCE-INTERSECTION BETWEEN MONUMENTS [12] AND [13] PER (R1).
- (M) S.F.N. ESTABLISHED ANGLE POINT ON THE N'LY RIGHT OF WAY OF COLLINS CHANNEL BY DISTANCE-DISTANCE-INTERSECTION BETWEEN MONUMENTS [12] AND [13] PER (R1).
- (N) ESTABLISHED THE E'LY LINE OF LOT 8 OF (R4) HOLDING MONUMENT [3] AND ESTABLISHMENT NOTE (M) PER (R2).
- (O) S.F.N. ESTABLISHED POINT ON THE N'LY RIGHT OF WAY OF COLLINS CHANNEL BY DISTANCE-DISTANCE-INTERSECTION BETWEEN MONUMENTS [13] AND [14] PER (R1).
- (P) S.F.N. ESTABLISHED POINT ON CENTERLINE BY PRORATION BETWEEN MONUMENTS [1] AND [2] PER (R1).
- (Q) ESTABLISHED E'LY LINE OF PARCEL 1302.4 OF (R5) AND 1302.3 OF (R6) HOLDING MONUMENT [13] AND ESTABLISHMENT NOTE (P) PER (R1).
- (R) ESTABLISHED W'LY LINE OF PARCEL 1304.1 OF (R7) HOLDING MONUMENTS [4] AND [6] PER (R1).
- (S) S.F.N. ESTABLISHED THE NORTHEAST CORNER OF PARCEL 1302.3 OF (R6) BY PRORATION BETWEEN MONUMENT [13] AND ESTABLISHMENT NOTE (P) PER (R1).
- (T) ESTABLISHED NW'LY LINE OF PARCEL 1304.1 OF (R7) BY LEAST SQUARE ADJUSTMENT BETWEEN MONUMENT [6] AND ESTABLISHMENT NOTE (S) PER (R1).
- (U) ESTABLISHED THE E'LY LINE OF PARCEL 1302.3 OF (R6) BY LEAST SQUARE ADJUSTMENT BETWEEN MONUMENT [11] AND ESTABLISHMENT NOTE (S) PER (R1).
- (V) ESTABLISHED THE N'LY RIGHT OF WAY OF COLLINS CHANNEL HOLDING MONUMENT [13] AND ESTABLISHMENT NOTE (Q) PER (R1).
- (W) ESTABLISHED POINT ON CENTERLINE OF KATELLA AVE. AT RECORD DISTANCE FROM MONUMENT [2], ON CENTERLINE PRODUCED BY ESTABLISHMENT NOTE (A) PER (R1).
- (X) ESTABLISHED THE E'LY LINE OF THE ORANGE COUNTY SHERIFF'S TRAINING FACILITY BY LEAST SQUARE ADJUSTMENT BETWEEN ESTABLISHMENT NOTES (O) AND (W) PER (R1).

REFERENCES

- (R1) = RECORD OF SURVEY 88-1014, R.S.B. 165/1-13
(R2) = RECORD OF SURVEY 2002-1032, R.S.B. 195/7-8
(R3) = ALIGNMENT NOTE, A/4-10/472-474
(R4) = MISCELLANEOUS RECORD, M.R.L.A. 5/120
(R5) = DEED NO. 2003000291822, O.R.
(R6) = DEED NO. 19960326865, O.R.
(R7) = DEED NO. 19960326864, O.R.
(R8) = DOCUMENT NO. 4386/151, RECORDED 1958, O.R.
(R9) = DEED NO. 5685/907, RECORDED 1961, O.R.

LEGEND

- FOUND MONUMENT AS NOTED
⊗ SEARCHED FOUND NOTHING

MONUMENT NOTES

- [1] FOUND 2 1/2" BRASS DISK STAMPED "ORANGE COUNTY SURVEYOR" IN LIEU OF LEAD, TACK AND 1 1/4" O.C.S. TAG PER (R1), DOWN 0.2' IN DIRT, ACCEPTED AS POINT ON CENTERLINE OF KATELLA AVE.
- [2] FOUND HEX BAR PER (R1), DOWN 1.6' IN WELL, ACCEPTED AS POINT ON CENTERLINE OF KATELLA AVE.
- [3] FOUND LEAD TACK AND 1 1/2" TAG STAMPED "ORANGE COUNTY SURVEYOR" PER (R2), FLUSH IN CONCRETE, N01°05'57"E 0.07' FROM THE NORTHEAST CORNER OF LOT 8 OF (R4).
- [4] FOUND 2" IRON PIPE W/ LEAD TACK AND 1 1/2" TAG STAMPED "ORANGE COUNTY SURVEYOR" PER (R1), FLUSH IN CONCRETE, N01°05'57"E 0.03' FROM THE CENTERLINE OF KATELLA AVE.
- [5] FOUND BOAT SPIKE AND 1 1/2" TAG STAMPED "ORANGE COUNTY SURVEYOR" PER (R2), FLUSH IN ASPHALT, ACCEPTED AS POINT ON E'LY RIGHT OF WAY OF SANTA ANA RIVER.
- [6] FOUND BOAT SPIKE AND 1 1/2" TAG STAMPED "ORANGE COUNTY SURVEYOR" PER (R1), FLUSH IN ASPHALT, ACCEPTED AS ANGLE POINT ON THE NW'LY CORNER OF PARCEL 1304.1 OF (R6).
- [7] FOUND BOAT SPIKE AND 1 1/2" TAG STAMPED "ORANGE COUNTY SURVEYOR" PER (R2), FLUSH IN ASPHALT, ACCEPTED AS POINT ON E'LY RIGHT OF WAY OF SANTA ANA RIVER.
- [8] FOUND BOAT SPIKE AND 1 1/2" TAG STAMPED "ORANGE COUNTY SURVEYOR" PER (R2), FLUSH IN ASPHALT, ACCEPTED AS POINT ON E'LY RIGHT OF WAY OF SANTA ANA RIVER.
- [9] FOUND BOAT SPIKE AND 1 1/2" TAG STAMPED "ORANGE COUNTY SURVEYOR" PER (R2), FLUSH IN ASPHALT, ACCEPTED AS POINT ON E'LY RIGHT OF WAY OF SANTA ANA RIVER.
- [10] FOUND BOAT SPIKE AND 1 1/2" TAG STAMPED "ORANGE COUNTY SURVEYOR" PER (R2), FLUSH IN ASPHALT, ACCEPTED AS POINT ON N'LY RIGHT OF WAY OF COLLINS CHANNEL.
- [11] FOUND 2" IRON PIPE W/ LEAD TACK AND TAG STAMPED "ORANGE COUNTY SURVEYOR PER (R1), 1.5' DOWN IN DIRT, N24°50'15"W 0.03' FROM N'LY RIGHT OF WAY OF COLLINS CHANNEL.
- [12] FOUND 2" IRON PIPE W/ LEAD TACK AND TAG STAMPED "ORANGE COUNTY SURVEYOR PER (R1), DOWN 0.3' IN DIRT, ACCEPTED AS POINT ON N'LY RIGHT OF WAY OF COLLINS CHANNEL.
- [13] FOUND 2" IRON PIPE W/ 1 1/4" TAG STAMPED "ORANGE COUNTY SURVEYOR RCE 7872" PER (R3), DOWN 1.2' IN DIRT, ACCEPTED AS POINT ON N'LY RIGHT OF WAY OF COLLINS CHANNEL.
- [14] FOUND 2" IRON PIPE W/ TACK PER (R1), DOWN 1.0' IN DIRT, ACCEPTED AS THE SOUTHEAST CORNER OF PARCEL 101.1 OF (R9).

U.S. Survey Foot

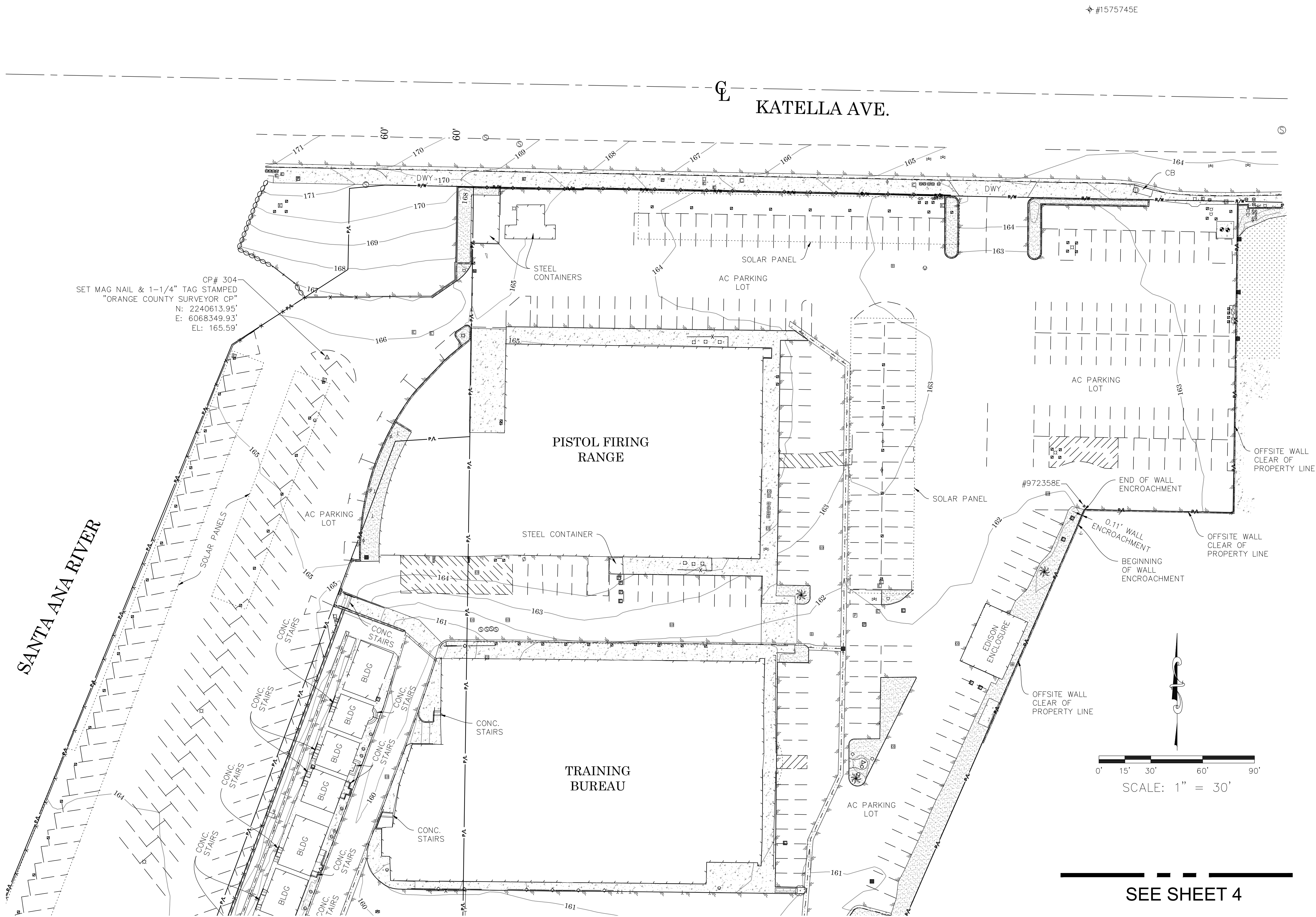
OC Public Works
OC Survey/Field Services
Boundary Analysis & Mapping

LINE TABLE			
LINE #	BEARING	MEASURED DISTANCE	RECORD DISTANCE
L2	N01°15'27"E	136.53'	(136.55' R1)
L3	N89°55'10"W	20.90'	(M&R1)
L4	N04°32'31"W	62.78'	(62.80' R1)
L5	N86°07'27"E	60.54'	(60.56' R1)
L6	N86°26'00"E	43.25'	(M&R1)

CURVE TABLE					
CURVE #	DELTA	RADIUS	LENGTH	RECORD DELTA	RECORD RADIUS
C1	9°09'04"	1051.98'	168.02'	(9°09'02" R2)	(1052.00' R2)
C2	9°42'18"	1051.98'	178.19'	(9°42'07" R2)	(1052.00' R2)

SCALE: 1" = 50'

			COUNTY OF ORANGE OC PUBLIC WORKS OC SURVEY/FIELD SERVICES/BOUNDARY ANALYSIS & MAPPING				
			OCSD KATELLA RANGE SITE SURVEY				
			BOUNDARY MAP				
			PROJECT LIMITS: APN 375-361-02, 375-361-20, 375-361-22				
			DATE OF SURVEY: 09/15/2020		BY: R. MACIAS AND CREW		SHEET NO. 2 of 6
			MAPPING		BY: A. VU		
OFFICE CHECK		BY: E. MEDINA, PLS					
MARK	DATE	ITEM	FIELD CHECK		BY: R. MACIAS, PLS		
REVISIONS			SCALE: 1" = 50'		W.O. #EC29908	FILE #2021PW-S0001	
			FILE: OCSD_KATELLA_RANGE_BNDY_2020.DWG				



LEGEND

SYMBOL

- Backflow Preventer Device
- Bush
- Control Box Electrical
- Control Box Undefined
- Control Point
- Fire Hydrant
- Flag Pole
- Found Monument
- Gate, Double
- Gate, Roller
- Gate, Single
- Grate Inlet
- Guy Wire Anchor
- Hose Bibb
- Light Pole, Double
- Light Pole, Single
- Mailbox
- Manhole Sewer
- Manhole Storm Drain
- Manhole Undefined
- Meter Water
- Piaster
- Pipe Inlet/Outlet
- Post
- Pull Box Cable TV
- Pull Box Electrical
- Pull Box Irrigation
- Pull Box Telephone
- Pull Box Traffic
- Pull Box Undefined
- Rock/Boulder
- Sewer Cleanout
- Sign Post
- Telephone Booth
- Tree
- Tree, Palm
- Utility Pole, Underground
- Valve
- Valve Water
- Vault Cable TV
- Vault Electrical
- Vault Telephone
- Vault Undefined
- Vault Water
- Yard Light

LINE PATTERN KEY

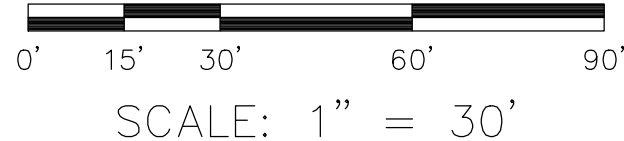
- Block Wall
- Building Outline
- Centerline
- Concrete Wall
- Edge of Concrete
- Edge of Asphalt Pavement
- Fence Barbed-Wire
- Fence Chainlink
- Fence Wood
- Fence Wrought Iron
- Flowline
- Handrail
- Overhanging Wire
- Property Line
- Retaining Wall
- Right of Way
- Striping
- Structure Overhang

ABBREVIATION

BLDG	Building
CB	Catch Basin
CONC	Concrete
CP	Control Point

AREA PATTERN KEY

- Concrete
- Brick
- Dirt
- Grass
- Gravel / Rip Rap
- Wood



SEE SHEET 4



			COUNTY OF ORANGE OC PUBLIC WORKS/ENGINEERING SERVICES OC SURVEY/FIELD SERVICES/BOUNDARY ANALYSIS & MAPPING				
			OCSD KATELLA RANGE SITE SURVEY				
			TOPOGRAPHIC MAP				
			PROJECT LIMITS: APN 375-361-02, 375-361-20, 375-361-22				
			TO				
			DATE OF SURVEY: 09/15/2020		BY: R. MACIAS AND CREW		SHEET NO. 3 of 6
			MAPPING		BY: A. VU		
			OFFICE CHECK		BY: E. MEDINA, PLS		
			FIELD CHECK		BY: R. MACIAS, PLS		
			SCALE: 1" = 30'		W.O. #EC29908 FILE # 2021PW-50001		
MARK	DATE	ITEM	FIELD CHECK		FILE: OCSD KATELLA RANGE_TOPO_2020.DWG		
REVISIONS							

SEE SHEET 3

SANTA ANA RIVER

PISTOL FIRING RANGE

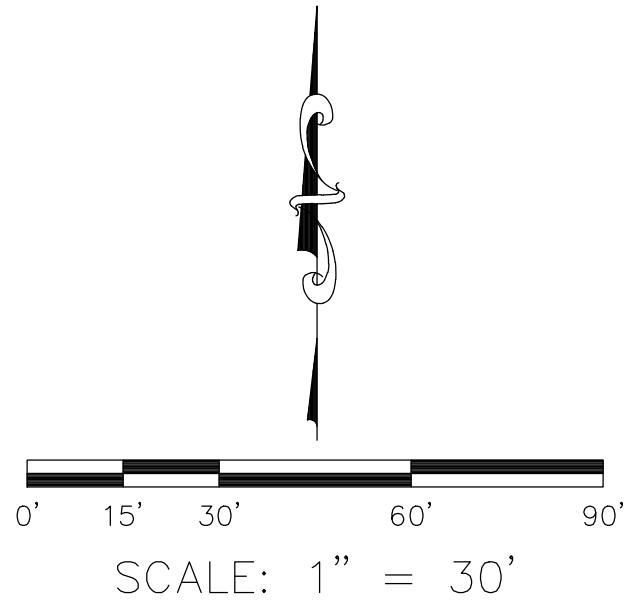
TRAINING BUREAU

O.C.F.C.D.
PARCEL 101.1
5685/907, O.R.

CALCULATED ENCROACHMENT AREA:
5,617.49 SQ. FT. (0.13 ACRES)

COLLINS CHANNEL

CP# 307
SET MAG NAIL & 1-1/4" TAG STAMPED
"ORANGE COUNTY SURVEYOR CP"
N: 2240047.40'
E: 6068083.39'
EL: 162.05'



U.S. Survey
Foot

OC Public Works
OC Survey/Field Services
Boundary Analysis & Mapping

LEGEND

SYMBOL

- Backflow Preventer Device
- Bush
- Control Box Electrical
- Control Box Undefined
- Control Point
- Fire Hydrant
- Flag Pole
- Found Monument
- Gate, Double
- Gate, Roller
- Gate, Single
- Grate Inlet
- Guy Wire Anchor
- Hose Bibb
- Light Pole, Double
- Light Pole, Single
- Mailbox
- Manhole Sewer
- Manhole Storm Drain
- Manhole Undefined
- Meter Water
- Pilaster
- Pipe Inlet/Outlet
- Post
- Pull Box Cable TV
- Pull Box Electrical
- Pull Box Irrigation
- Pull Box Telephone
- Pull Box Traffic
- Pull Box Undefined
- Rock/Boulder
- Sewer Cleanout
- Sign Post
- Telephone Booth
- Tree
- Tree, Palm
- Utility Pole, Underground
- Valve
- Valve Water
- Vault Cable TV
- Vault Electrical
- Vault Telephone
- Vault Undefined
- Vault Water
- Yard Light

LINE PATTERN KEY

- Block Wall
- Building Outline
- Centerline
- Concrete Wall
- Edge of Concrete
- Edge of Asphalt Pavement
- Fence Barbed-Wire
- Fence Chainlink
- Fence Wood
- Fence Wrought Iron
- Flowline
- Handrail
- Overhanging Wire
- Property Line
- Retaining Wall
- Right of Way
- Striping
- Structure Overhang

ABBREVIATION

- BLDG Building
- CB Catch Basin
- CONC Concrete
- CP Control Point

AREA PATTERN KEY

- Concrete
- Brick
- Dirt
- Grass
- Gravel / Rip Rap
- Wood

COUNTY OF ORANGE
OC PUBLIC WORKS/ENGINEERING SERVICES
OC SURVEY/FIELD SERVICES/BOUNDARY ANALYSIS & MAPPING

OCSD KATELLA RANGE SITE SURVEY

TOPOGRAPHIC MAP

PROJECT LIMITS: APN 375-361-02, 375-361-20, 375-361-22

TO

DATE OF SURVEY: 09/15/2020 BY: R. MACIAS AND CREW

MAPPING BY: A. VU

OFFICE CHECK BY: E. MEDINA, PLS

FIELD CHECK BY: R. MACIAS, PLS

SCALE: 1" = 30' W.O. #EC29908 FILE #2021PW-50001

FILE: OCSD KATELLA RANGE_TOPO_2020.DWG

SHEET NO.

4

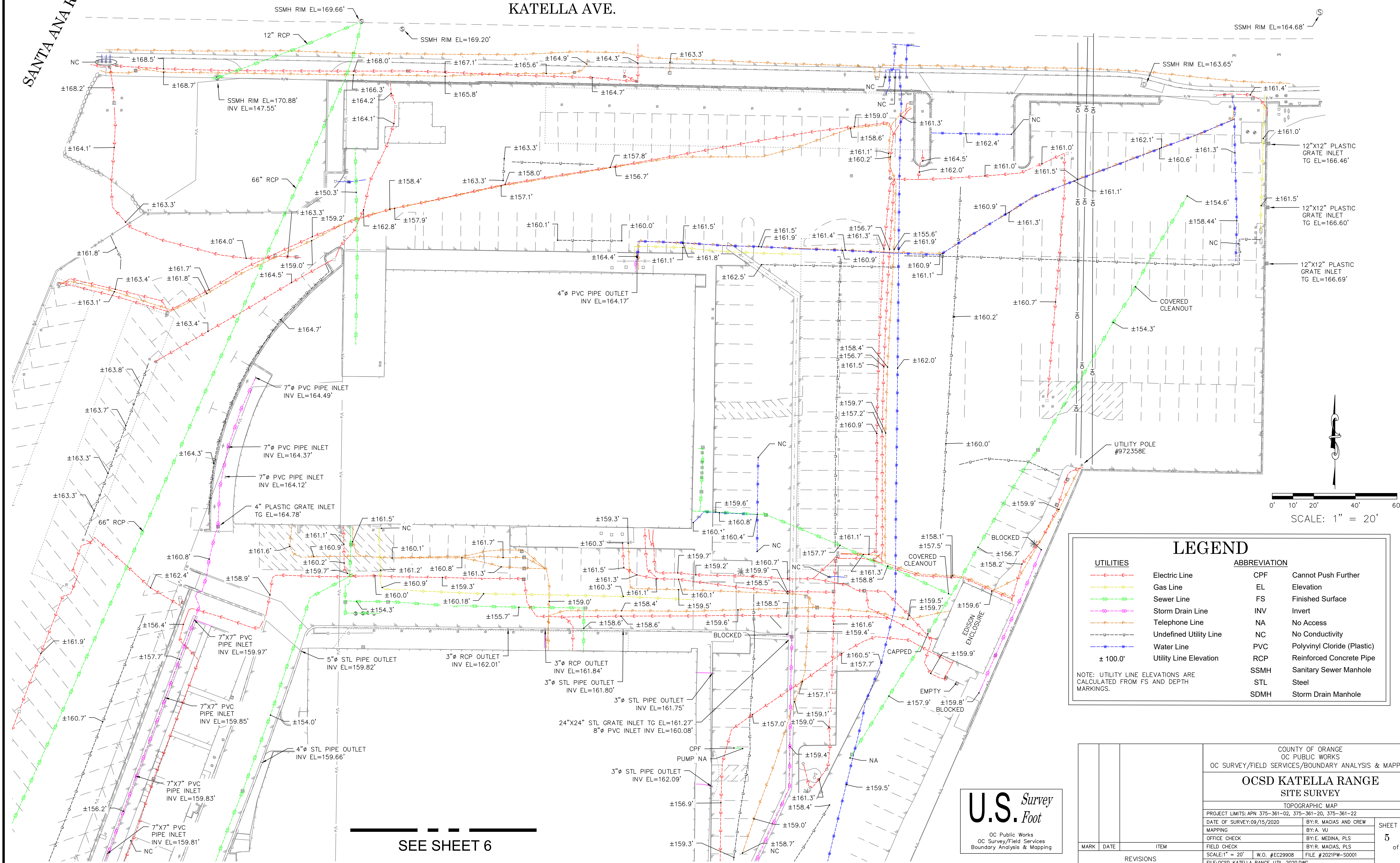
of

6

REVISIONS

SANTA ANA RIVER

KATELLA AVE.



LEGEND

UTILITIES	ABBREVIATION
Electric Line	CPF Cannot Push Further
Gas Line	EL Elevation
Sewer Line	FS Finished Surface
Storm Drain Line	INV Invert
Telephone Line	NA No Access
Undefined Utility Line	NC No Conductivity
Water Line	PVC Polyvinyl Chloride (Plastic)
Utility Line Elevation	RCP Reinforced Concrete Pipe
± 100.0'	SSMH Sanitary Sewer Manhole
	STL Steel
	SDMH Storm Drain Manhole

NOTE: UTILITY LINE ELEVATIONS ARE CALCULATED FROM FS AND DEPTH MARKINGS.

U.S. Survey
Foot

OC Public Works
OC Survey/Field Services
Boundary Analysis & Mapping

				COUNTY OF ORANGE OC PUBLIC WORKS OC SURVEY/FIELD SERVICES/BOUNDARY ANALYSIS & MAPPING		
		OCSD KATELLA RANGE SITE SURVEY				
		TOPOGRAPHIC MAP				
		PROJECT LIMITS: APN 375-361-02, 375-361-20, 375-361-22				
		DATE OF SURVEY: 09/15/2020		BY: R. MACIAS AND CREW		SHEET NO. 5 of 6
		MAPPING		BY: A. VU		
		OFFICE CHECK		BY: E. MEDINA, PLS		
		FIELD CHECK		BY: R. MACIAS, PLS		
		SCALE: 1" = 20'		W.O. #EC29908		
		FILE: OCSD KATELLA RANGE_UTIL_2020.DWG		FILE # 2021PW-S0001		
MARK	DATE	ITEM	REVISIONS			

SEE SHEET 5

SANTA ANA RIVER

COLLINS CHANNEL

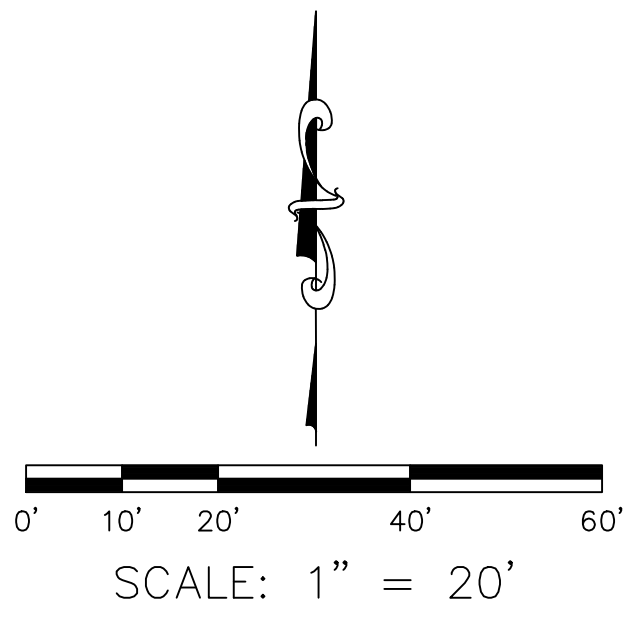
UTILITIES

- Electric Line
- Gas Line
- Sewer Line
- Storm Drain Line
- Telephone Line
- Undefined Utility Line
- Water Line
- Utility Line Elevation

ABBREVIATION

- CPF Cannot Push Further
- EL Elevation
- FS Finished Surface
- INV Invert
- NA No Access
- NC No Conductivity
- PVC Polyvinyl Chloride (Plastic)
- RCP Reinforced Concrete Pipe
- SSMH Sanitary Sewer Manhole
- STL Steel
- SDMH Storm Drain Manhole

NOTE: UTILITY LINE ELEVATIONS ARE CALCULATED FROM FS AND DEPTH MARKINGS.



U.S. Survey
Foot

OC Public Works
OC Survey/Field Services
Boundary Analysis & Mapping

COUNTY OF ORANGE OC PUBLIC WORKS OC SURVEY/FIELD SERVICES/BOUNDARY ANALYSIS & MAPPING			
OCSD KATELLA RANGE SITE SURVEY			
TOPOGRAPHIC MAP			
PROJECT LIMITS: APN 375-361-02, 375-361-20, 375-361-22			
DATE OF SURVEY: 09/15/2020		BY: R. MACIAS AND CREW	
MAPPING		BY: A. VU	
OFFICE CHECK		BY: E. MEDINA, PLS	
FIELD CHECK		BY: R. MACIAS, PLS	
SCALE: 1" = 20'		W.O. #EC29908	FILE #2021PW-50001
FILE: OCSD KATELLA RANGE_UTIL_2020.DWG			
MARK	DATE	ITEM	
REVISIONS			
			SHEET NO. 6 of 6