



OC PUBLIC WORKS DEPARTMENT

JAMES TREADAWAY, DIRECTOR OF PUBLIC WORKS

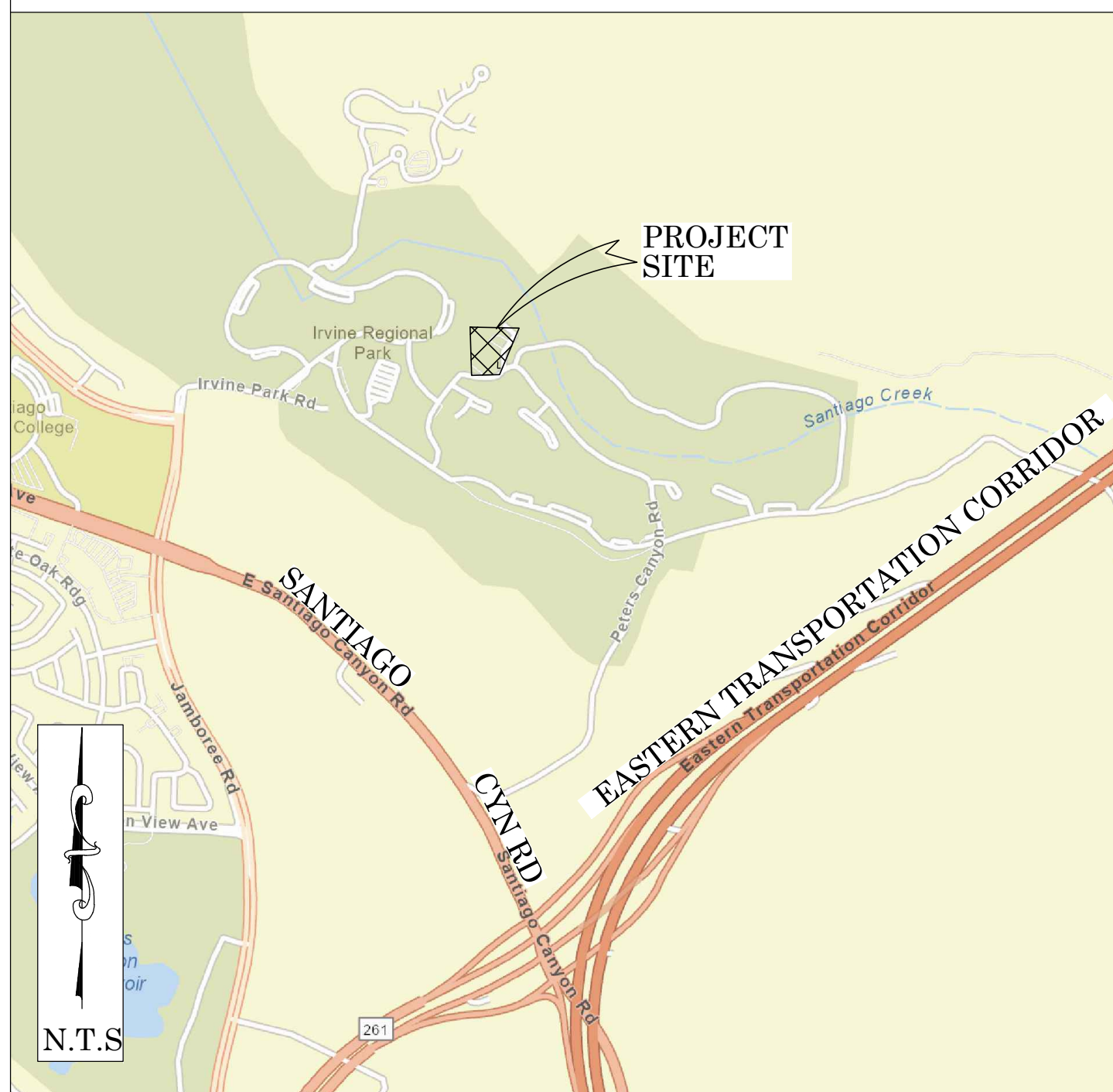
KEVIN HILLS, COUNTY SURVEYOR

IRVINE REGIONAL PARK



REGIONAL TRAILS CARPORT

LOCATION MAP



CP# 405
SET MAG SPIKE AND 1 1/2 INCH "OCS" WASHER STAMPED CP
N: 2236830.90
E: 6105505.54

CP# 401
SET LEAD TACK AND "OCS" TAG FLUSH IN CONC
N: 2237098.56
E: 6105718.21



FOUND CGPS "SACY"
N: 2218016.19
E: 6061432.27
THIS IS A CONTINUOUS GPS STATION
(CGPS) AND IS PART OF THE CALIFORNIA
SPATIAL REFERENCE NETWORK (CSRN),
FROM WHICH DATA CAN BE DOWNLOADED
HERE: [HTTP://SOPACCSRC.UCSD.EDU/](http://SOPACCSRC.UCSD.EDU/).

FOUND CGPS "TRAK"
N: 2171992.61
E: 6088761.20
THIS IS A CONTINUOUS GPS STATION
(CGPS) AND IS PART OF THE CALIFORNIA
SPATIAL REFERENCE NETWORK (CSRN),
FROM WHICH DATA CAN BE DOWNLOADED
HERE: [HTTP://SOPACCSRC.UCSD.EDU/](http://SOPACCSRC.UCSD.EDU/).

TOPOGRAPHIC MAPPING PROJECT

BASIS OF BEARINGS

THE BASIS OF BEARINGS FOR THIS SURVEY IS BASED ON THE CALIFORNIA COORDINATE SYSTEM (CCS83), ZONE VI, NAD 83, OCS (2017.50) EPOCH ADJUSTMENT, AS DETERMINED LOCALLY BY A LINE BETWEEN CONTINUOUS GLOBAL POSITIONING STATIONS CGPS STATIONS (SACY) AND (TRAK) BEING NORTH 30°42'07.06" WEST AS DERIVED FROM THE COORDINATES PUBLISHED BY THE CALIFORNIA SPATIAL REFERENCE CENTER (CSRC) ALONG WITH DATA SHEETS ON FILE IN THE OFFICE OF THE ORANGE COUNTY SURVEYOR.

HORIZONTAL DATUM

COORDINATES SHOWN ARE BASED ON THE CALIFORNIA COORDINATE SYSTEM (CCS83), ZONE VI, NAD 83, OCS (2017.50) EPOCH ADJUSTMENT.

ALL DISTANCES SHOWN ARE GRID, UNLESS OTHERWISE NOTED. TO OBTAIN GROUND DISTANCES MULTIPLY GRID BY A COMBINED FACTOR OF 1.00003594.

THIS COMBINATION FACTOR WAS HELD AT: CP# 405
N: 2236830.90 E: 6105505.54 EL: 585.28

ALL DISTANCES ARE BASED ON THE U.S. SURVEY FOOT.

VERTICAL DATUM

O.C.S. BM. 3KK-2A-80 ELEV. = 554.549' YEAR LEVELED: 1991

NAVD 1988 (O.C.S. 1995 ADJUSTMENT)

DESCRIPTION: FOUND 3 3/4" OCS ALUMINUM DISK IN CONC. STAMPED BENCHMARK "3KK-2A-80" UP 0.75' ABOVE DIRT, DESCRIBED BY OCS 1991 FROM THE INTERSECTION OF CHAPMAN AVENUE AND JAMBOREE ROAD, PROCEED NORTHERLY ON JAMBOREE ROAD 0.3 MILE TO OLD CHAPMAN AVENUE, PROCEED WESTERLY ON OLD CHAPMAN AVENUE 165 FT. TO GATE ON NORTHERLY SIDE OF ROAD, PROCEED THRU GATE ON DIRT ROAD 0.5 MILE CROSS CREEK AND IMMEDIATELY TAKE LEFT. FORK, 0.15 MILE WEST PARALLELING CREEK DOWNSTREAM, 95 FT. SOUTHERLY OF THE DIRT ROAD, SET IN THE TOP OF A CONCRETE POST.

NOTES

THE SURVEY INFORMATION SHOWN HEREON IS TO BE USED FOR TOPOGRAPHIC RELATIONSHIPS ONLY AND IS NOT INTENDED FOR LAND ACQUISITION OR BOUNDARY PURPOSES.

SHEET INDEX

SHEET	NO.	DESCRIPTION
1	TITLE SHEET	
2	TOPOGRAPHIC MAP	

PURPOSE OF SURVEY

THE PURPOSE OF THE SURVEY IS TO PROVIDE A TOPOGRAPHIC MAP FOR THIS SUBJECT PROJECT.

SENIOR LAND SURVEYOR'S CERTIFICATE:

THIS MAP CORRECTLY REPRESENTS A SURVEY MADE BY ME OR UNDER MY DIRECTION IN CONFORMANCE WITH REQUIREMENTS OF THE PROFESSIONAL LAND SURVEYORS' ACT; THIS 4 DAY OF JANUARY, 2023.

MICHAEL KUBISTY, PLS. SENIOR LAND SURVEYOR



DEPUTY COUNTY SURVEYOR'S STATEMENT:

THIS MAP HAS BEEN EXAMINED IN ACCORDANCE WITH THE PROFESSIONAL LAND SURVEYORS' ACT; THIS 4 DAY OF JANUARY, 2023.

MICHAEL LAFONTAINE, PLS. DEPUTY COUNTY SURVEYOR



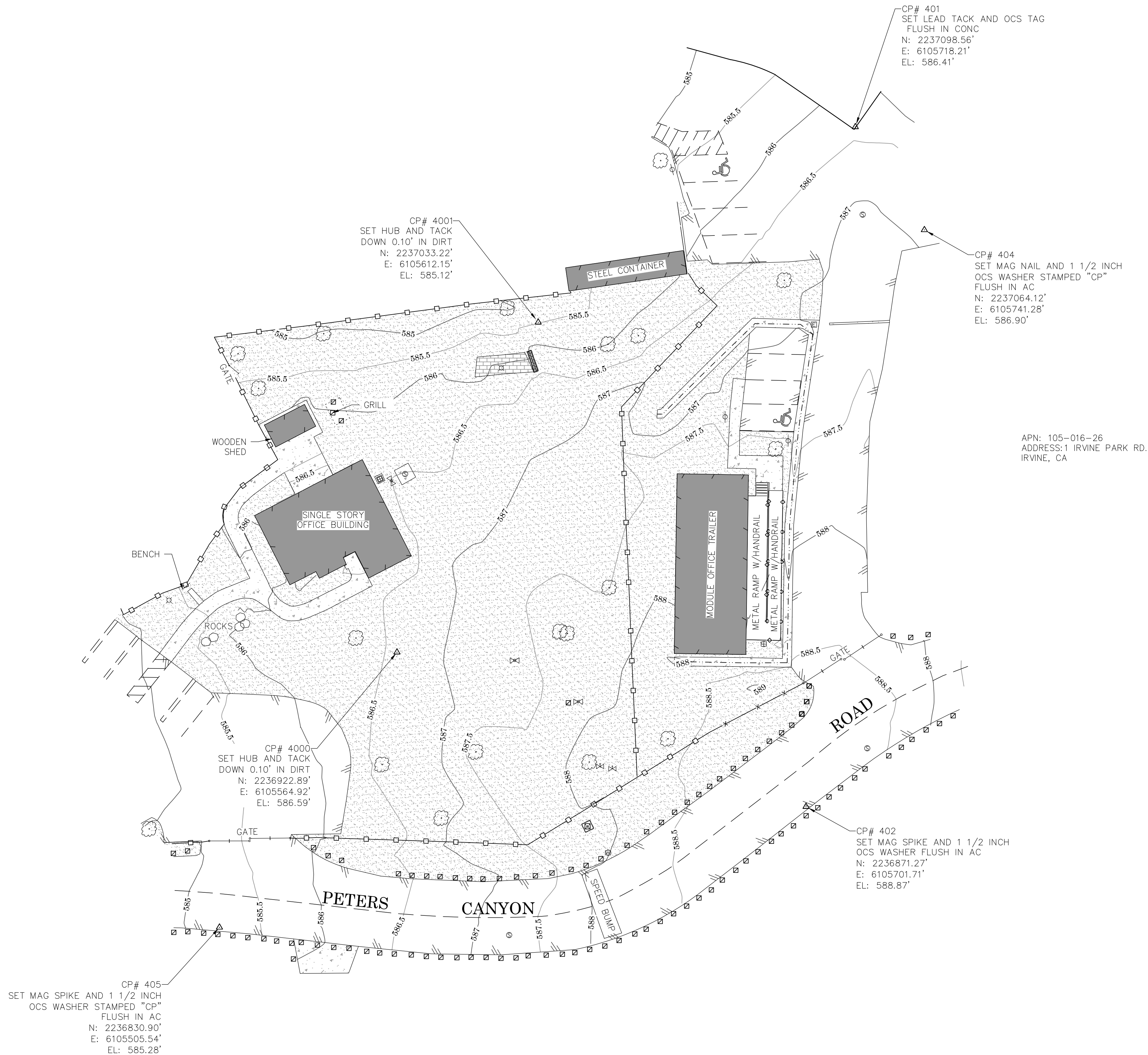
U.S. Survey
Foot

OC Public Works
OC Survey/Field Services
Boundary Analysis & Mapping

COUNTY OF ORANGE
OC PUBLIC WORKS
OC SURVEY/FIELD SERVICES/BOUNDARY ANALYSIS & MAPPING

IRVINE REGIONAL PARK REGIONAL TRAILS CARPORT

TITLE SHEET			
PROJECT LIMITS: ALONG PETERS CANYON ROAD			
TO EXISTING OC PARKS REGIONAL TRAILS OFFICE			
DATE OF SURVEY:12/22/2022	BY: T. LOFGREEN & CREW	SHEET NO. 1 of 2	
MAPPING	BY: S. ROBATI		
OFFICE CHECK	BY: M. KUBISTY, PLS		
FIELD CHECK	BY: T. LOFGREEN & CREW		
SCALE: N.T.S.	W.O. #EH21680		FILE # 2223PW-OCPO002
FILE:IRVINE REGIONAL PARK_TOPO_2022.DWG			



LEGEND

SYMBOL

- Benchmark
- Bush
- Control Box Water
- Control Point
- Electrical Tower
- Fire Hydrant
- Gate, Double
- Gate, Roller
- Gate, Single
- Light Pole, Single
- Manhole Sewer
- Meter Undefined
- Meter Water
- Post
- Pull Box Electrical
- Rock/Boulder
- Sign Post
- Tree
- Valve Irrigation
- Valve Water
- AC UNIT

LINE PATTERN KEY

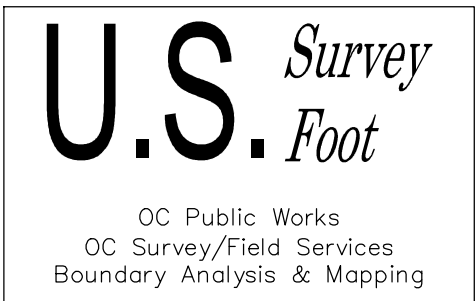
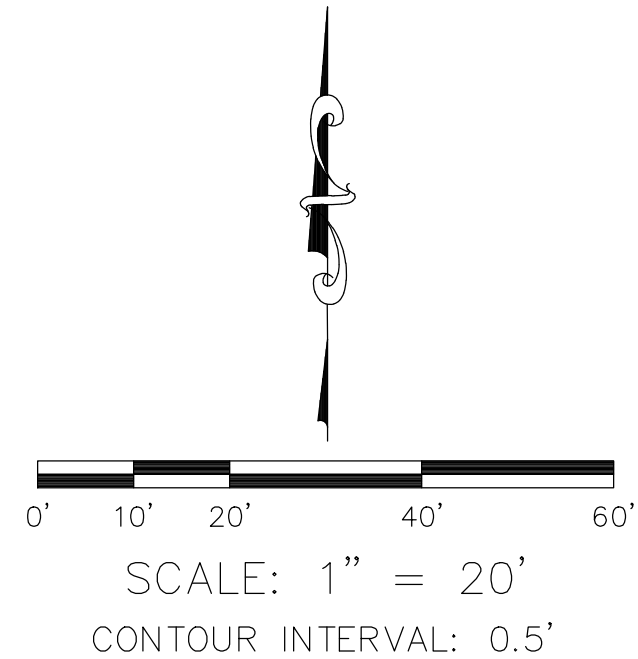
- Brick Wall
- Building Outline
- Edge of Concrete
- Edge of Asphalt Pavement
- Fence Chainlink
- Fence Wood
- Flowline
- Hand Rail
- Roof Overhang
- Striping

AREA PATTERN KEY

- Concrete
- Brick
- Dirt

ABBREVIATION

- AC Asphalt Concrete
- BM Benchmark
- CONC Concrete
- CP Control Point
- EL Elevation
- FD Found



			COUNTY OF ORANGE OC PUBLIC WORKS OC SURVEY/FIELD SERVICES/BOUNDARY ANALYSIS & MAPPING				
			IRVINE REGIONAL PARK REGIONAL TRAILS CARPORT				
			TOPOGRAPHIC MAP				
			PROJECT LIMITS: ALONG PETERS CANYON ROAD				
			TO EXISTING OC PARKS REGIONAL TRAILS OFFICE				
			DATE OF SURVEY:12/22/2022		BY:T. LOFGREEN & CREW		SHEET NO. 2 of 2
			MAPPING		BY:S. ROBATI		
			OFFICE CHECK		BY:M. KUBISTY, PLS		
			FIELD CHECK		BY:T. LOFGREEN & CREW		
			SCALE:1" = 20'		FILE # 2223PW-OC0002		
MARK			DATE		ITEM		
					REVISIONS		
			SCALE:1" = 20'		W.O. #EH21680		
			FILE:IRVINE REGIONAL PARK_TOPO_2022.DWG				