

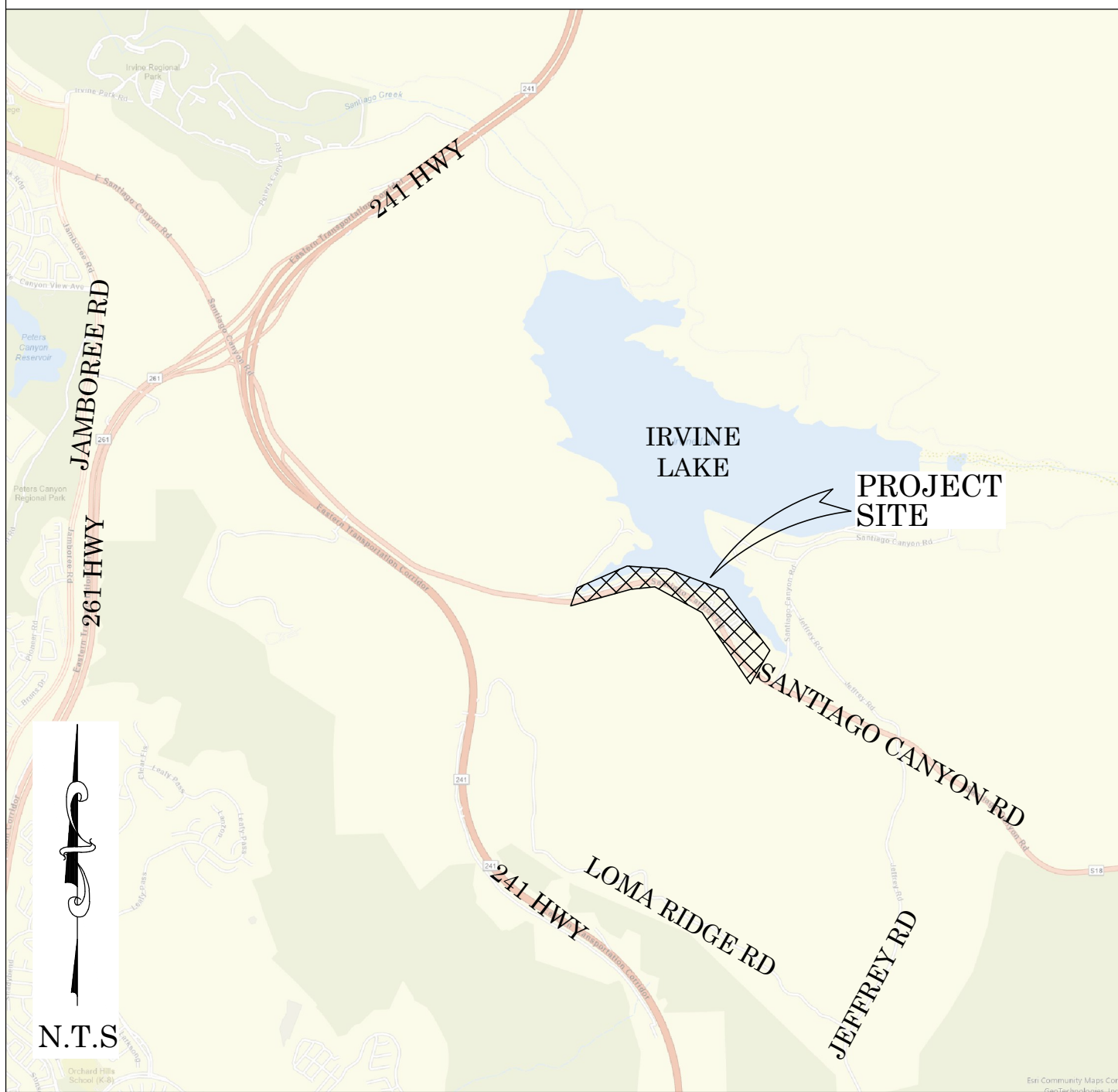


OC PUBLIC WORKS DEPARTMENT
JAMES TREADAWAY, DIRECTOR OF PUBLIC WORKS
KEVIN HILLS, COUNTY SURVEYOR
IRVINE LAKE



PROPOSED LEASE FOR PARCEL 31D-101

LOCATION MAP



SENIOR LAND SURVEYOR'S CERTIFICATE:

THIS MAP CORRECTLY REPRESENTS A SURVEY MADE BY ME OR UNDER MY DIRECTION IN CONFORMANCE WITH REQUIREMENTS OF THE PROFESSIONAL LAND SURVEYOR'S ACT; THIS 20 DAY OF APRIL, 2022.

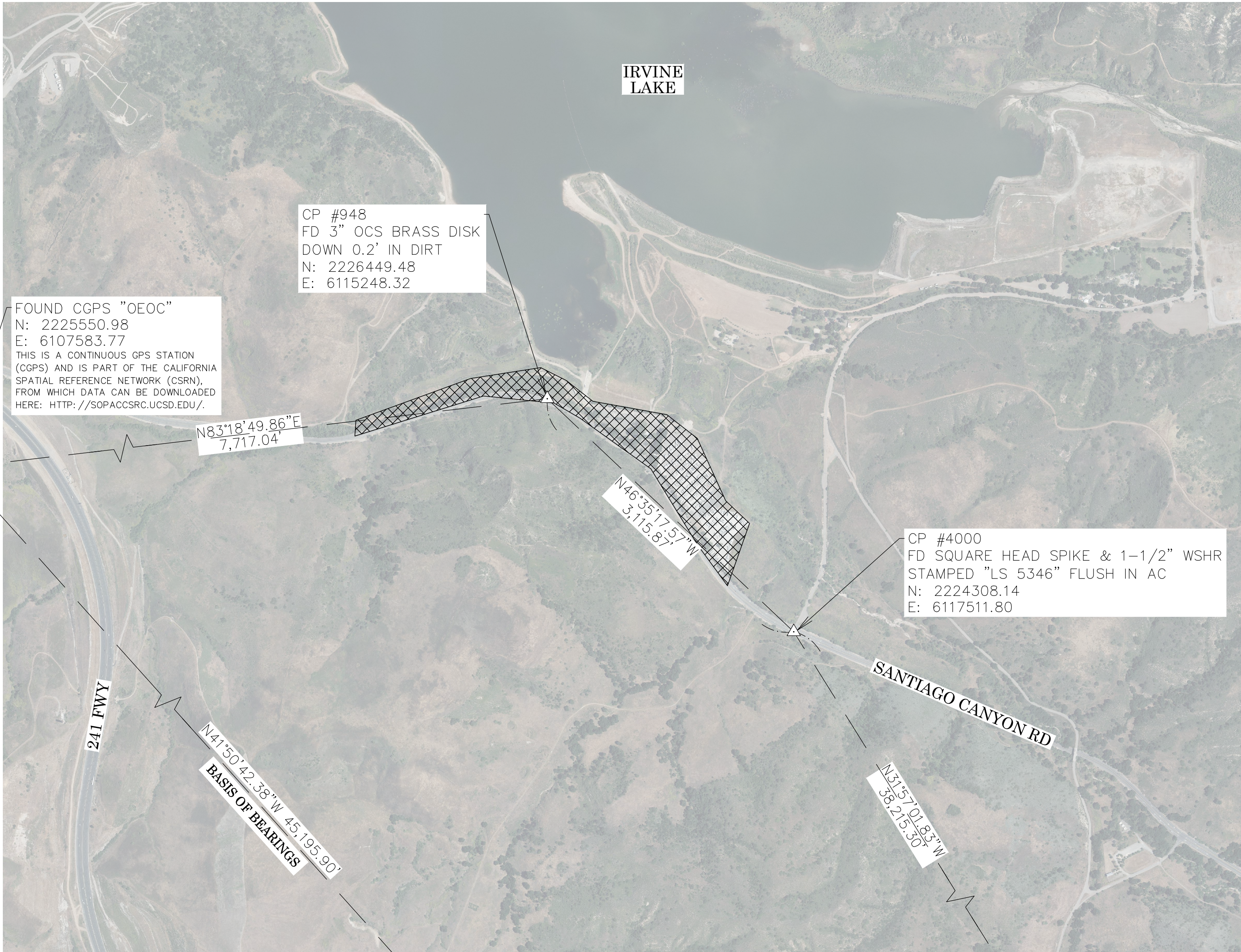
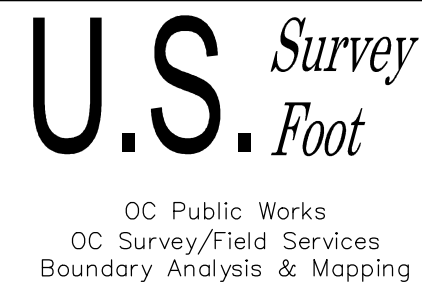
MICHAEL KUBISTY, PLS. SENIOR LAND SURVEYOR



DEPUTY COUNTY SURVEYOR'S STATEMENT:

THIS MAP HAS BEEN EXAMINED IN ACCORDANCE WITH THE PROFESSIONAL LAND SURVEYOR'S ACT; THIS 20 DAY OF APRIL, 2022.

WADE WEAVER, PLS. DEPUTY COUNTY SURVEYOR



TOPOGRAPHIC MAPPING PROJECT

BASIS OF BEARINGS

THE BASIS OF BEARINGS FOR THIS SURVEY IS BASED ON THE CALIFORNIA COORDINATE SYSTEM (CCS83), ZONE VI, NAD 83, OCS (2017.50) EPOCH ADJUSTMENT, AS DETERMINED LOCALLY BY A LINE BETWEEN CONTINUOUS GLOBAL POSITIONING STATIONS CGPS STATIONS (WHYT) AND (OEOC) BEING NORTH 41°50'42\"/>

HORIZONTAL DATUM

COORDINATES SHOWN ARE BASED ON THE CALIFORNIA COORDINATE SYSTEM (CCS83), ZONE VI, NAD 83, OCS (2017.50) EPOCH ADJUSTMENT.
ALL DISTANCES SHOWN ARE GRID, UNLESS OTHERWISE NOTED. TO OBTAIN GROUND DISTANCES MULTIPLY GRID BY A COMBINED FACTOR OF 1.00005237.
THIS COMBINATION FACTOR WAS HELD AT: CP#948
N: 2226449.48 E: 6115248.32 EL: 847.8'
ALL DISTANCES ARE BASED ON THE U.S. SURVEY FOOT.

VERTICAL DATUM

O.C.S. BM. 3D-114-71 ELEV. = 824.95' YEAR LEVELED: 1991
NAVD 1988 (O.C.S. 1995 ADJUSTMENT)
DESCRIPTION: FOUND 3 3/4\"/>

NOTES

THE SURVEY INFORMATION SHOWN HEREON IS TO BE USED FOR TOPOGRAPHIC RELATIONSHIPS ONLY AND IS NOT INTENDED FOR LAND ACQUISITION OR BOUNDARY PURPOSES.

SHEET INDEX

SHEET	NO.	DESCRIPTION
1	1	TITLE SHEET
2-3	2-3	BOUNDARY MAP
4	4	TOPOGRAPHIC MAP

PURPOSE OF SURVEY

THE PRUPOSE OF THIS SURVEY IS TO PROVIDE TOPOGRAPHY AND BOUNDARY/ RIGHT OF WAY ESTABLISHMENT FOR A PROPOSED LEASE AGREEMENT WITH IN COUNTY PARCEL OS31D-101.



N.T.S.

			COUNTY OF ORANGE OC PUBLIC WORKS OC SURVEY/FIELD SERVICES/BOUNDARY ANALYSIS & MAPPING				
			IRVINE LAKE PROPOSED LEASE FOR PARCEL OS31D-101				
			TITLE SHEET				
			PROJECT LIMITS: FROM APPROX 2,300' W/LY OF THE IRVINE LAKE ENTRANCE TO APPROX 1,400' E/LY OF THE IRVINE LAKE ENTRANCE				
			DATE OF SURVEY: 4/1/2022		BY: T. LOFGREEN AND PARTY		SHEET NO. 1 of 4
			MAPPING		BY: J. PEDRETTI		
			OFFICE CHECK		BY: M. KUBISTY, PLS		
			FIELD CHECK		BY: T. LOFGREEN AND PARTY		
			SCALE: N.T.S.		FILE # 2122PW-RE0003		
MARK	DATE	ITEM	FILE: IRVINE LAKE TOPO 2022.DWG				
		REVISIONS					

MONUMENT NOTES

- 1

FOUND HEX BAR IN STANDARD OCS WELL MON, PER R3, DOWN 1.8 FEET IN AC, ACCEPTED AS POINT ON CENTERLINE OF SANTIAGO CANYON ROAD
- 2

FOUND 2 INCH IRON PIPE WITH WITH C NAIL, PER R3, DOWN 1.50 FEET IN DIRT, ACCEPTED AS CENTERLINE PI OF SANTIAGO CANYON ROAD
- 3

FOUND 2 INCH IRON PIPE WITH OCS TAG STAMPED "RE 7872", PER R3, DOWN 0.4 FEET IN DIRT, ACCEPTED AS CENTERLINE PI OF SANTIAGO CANYON ROAD
- 4

FOUND HEX BAR IN STANDARD OCS WELL MONUMENT, PER R3, DOWN 1.8 FEET IN AC, ACCEPTED AS POINT ON CENTERLINE OF SANTIAGO CANYON ROAD, N58°20'35"W 0.17 FEET FROM CENTERLINE BC OF SANTIAGO CANYON ROAD
- 5

FOUND HEX BAR IN STANDARD OCS WELL MONUMENT, PER R3, DOWN 1.0 FOOT IN AC, ACCEPTED AS CENTERLINE EC OF SANTIAGO CANYON ROAD
- 6

FOUND 2 INCH IRON PIPE WITH BRASS NAIL, PER R4, IN CONCRETE UP 0.1 FEET IN DIRT, ACCEPTED AS CENTERLINE PI OF SANTIAGO CANYON ROAD
- 7

FOUND HEX BAR IN STANDARD OCS WELL MONUMENT, PER R4, DOWN 1.5 FEET IN AC, ACCEPTED AS CENTERLINE BC OF SANTIAGO CANYON ROAD
- 8

FOUND HEX BAR IN STANDARD OCS WELL MONUMENT, PER R4, DOWN 1.5 FEET IN AC, N10°23'45"E 0.17' FROM CENTERLINE BC OF SANTIAGO CANYON ROAD
- 9

FOUND 2 INCH IRON PIPE WITH BRASS NAIL, PER R4, IN CONCRETE UP 0.1 FEET IN DIRT, ACCEPTED AS CENTERLINE PI OF SANTIAGO CANYON ROAD
- 10

FOUND SQUARE HEAD SPIKE AND 1-1/2 INCH WASHER STAMPED "LS 5346", NO REF, FLUSH IN AC, ACCEPTED AS POINT ON CENTERLINE OF SANTIAGO CANYON ROAD, N40°34'19"W 0.17' FROM POINT OF BEGINNING OF R7
- 11

FOUND SQUARE HEAD SPIKE AND 1-1/2 INCH WASHER STAMPED "LS 5346", NO REFERENCE, FLUSH IN AC, ACCEPTED AS POINT ON CENTERLINE OF SANTIAGO CANYON ROAD
- 12

FOUND HEX BAR IN STANDARD OCS WELL MONUMENT, PER R4, DOWN 1.5 FEET IN AC, ACCEPTED AS POINT ON CENTERLINE, N79°46'13"W 0.12 FEET FROM CENTERLINE EC OF SANTIAGO CANYON ROAD
- 13

FOUND HEX BAR IN STANDARD OCS WELL MON, PER R3, DOWN 1.8 FEET IN AC, ACCEPTED AS POINT ON CENTERLINE OF SANTIAGO CANYON ROAD
- 14

FOUND 5/8 INCH ALUMINUM PIN WITH 1-1/2 INCH ALUMINUM DISK STAMPED "LS 4965", PER R2, FLUSH IN DIRT, ACCEPTED AS AN ANGLE POINT IN THE SE'LY LINE OF R7
- 15

FOUND 5/8 INCH ALUMINUM PIN WITH 1-1/2 INCH ALUMINUM DISK STAMPED "LS 4965", PER R2, FLUSH IN DIRT, ACCEPTED AS AN ANGLE POINT IN THE SE'LY LINE OF R7
- 16

FOUND 1-1/2 INCH ALUMINUM CAP PIN CAP STAMPED "LS 4965", IN LIEU OF 5/8 INCH ALUMINUM PIN WITH 1-1/2 INCH ALUMINUM DISK STAMPED "LS 4965", PER R2, FLUSH IN DIRT, ACCEPTED AS AN ANGLE POINT IN THE SE'LY LINE OF R7
- 17

FOUND 1 INCH IRON PIPE WITH TACK AND 3/4 INCH TAG STAMPED "LS 5346", NO REFERENCE, IN LIEU OF 5/8 INCH ALUMINUM PIN WITH 1-1/2 INCH ALUMINUM DISK STAMPED "LS 4965", PER R2, DOWN 0.5 FEET IN DIRT, ACCEPTED AS ANGLE POINT IN THE SE'LY LINE OF R7
- 18

FOUND 5/8 INCH ALUMINUM PIN WITH 1-1/2 INCH ALUMINUM DISK STAMPED "LS 4965", PER R2, DOWN 1.25 FEET IN DIRT, ACCEPTED AS AN ANGLE POINT IN THE SE'LY LINE OF R7
- 19

FOUND 1 INCH IRON PIPE WITH TACK AND 3/4 INCH TAG STAMPED "LS 5346", NO REFERENCE, IN LIEU OF 5/8 INCH ALUMINUM PIN WITH 1-1/2 INCH ALUMINUM DISK STAMPED "LS 4965", PER R2, DOWN 0.1 FEET IN DIRT, ACCEPTED AS ANGLE POINT IN THE NE'LY LINE OF R7

- 20

FOUND 1 INCH IRON PIPE WITH TACK AND 3/4 INCH TAG STAMPED "LS 5346", NO REFERENCE, IN LIEU OF 5/8 INCH ALUMINUM PIN WITH 1-1/2 INCH ALUMINUM DISK STAMPED "LS 4965", PER R2, DOWN 0.3 FEET IN DIRT, ACCEPTED AS ANGLE POINT IN THE NE'LY LINE OF R7
- 21

FOUND 5/8 INCH ALUMINUM PIN WITH 1-1/2 INCH ALUMINUM DISK STAMPED "LS 4965", PER R2, DOWN 0.4 FEET IN DIRT, ACCEPTED AS AN ANGLE POINT IN THE NE'LY LINE OF R7
- 22

FOUND SQUARE HEAD SPIKE AND 1-1/2 INCH WASHER STAMPED "LS 4965", NO REFERENCE, IN LIEU OF 5/8 INCH ALUMINUM PIN WITH 1-1/2 INCH ALUMINUM DISK STAMPED "LS 4965", PER R2, FLUSH IN AC, ACCEPTED AS AN ANGLE POINT IN THE NE'LY LINE OF R7
- 23

FOUND SQUARE HEAD SPIKE AND 1-1/2 INCH WASHER STAMPED "LS 4965", NO REFERENCE, IN LIEU OF 5/8 INCH ALUMINUM PIN WITH 1-1/2 INCH ALUMINUM DISK STAMPED "LS 4965", PER R2, FLUSH IN AC, ACCEPTED AS AN ANGLE POINT IN THE NE'LY LINE OF R7
- 24

FOUND 5/8 INCH ALUMINUM PIN WITH 1-1/2 INCH ALUMINUM DISK STAMPED "LS 4965", PER R2, DOWN 0.4 FEET DIRT, ACCEPTED AS AN ANGLE POINT IN THE NE'LY LINE OF R7
- 25

FOUND 5/8 INCH ALUMINUM PIN WITH 1-1/2 INCH ALUMINUM DISK STAMPED "LS 4965", PER R2, DOWN 0.15 FEET IN DIRT, ACCEPTED AS AN ANGLE POINT IN THE NE'LY LINE OF R7
- 26

FOUND 5/8 INCH ALUMINUM PIN WITH 1-1/2 INCH ALUMINUM DISK STAMPED "LS 4965", PER R2, DOWN 0.15 FEET IN DIRT, ACCEPTED AS AN ANGLE POINT IN THE NE'LY LINE OF R7
- 27

FOUND 1 INCH IRON PIPE WITH TACK AND 3/4 INCH TAG STAMPED "LS 5346", NO REFERENCE, IN LIEU OF 5/8 INCH ALUMINUM PIN WITH 1-1/2 INCH ALUMINUM DISK STAMPED "LS 4965", PER R2, DOWN 0.15 FEET IN DIRT, ACCEPTED AS ANGLE POINT IN THE NW'LY LINE OF R7
- 28

FOUND 1 INCH IRON PIPE WITH TACK AND 3/4 INCH TAG STAMPED "LS 5346", NO REFERENCE, IN LIEU OF 5/8 INCH ALUMINUM PIN WITH 1-1/2 INCH ALUMINUM DISK STAMPED "LS 4965", PER R2, DOWN 0.1 FEET IN DIRT, ACCEPTED AS ANGLE POINT IN THE NW'LY LINE OF R7
- 29

FOUND 1 INCH IRON PIPE WITH TACK AND 3/4 INCH TAG STAMPED "LS 5346", NO REFERENCE, IN LIEU OF 5/8 INCH ALUMINUM PIN WITH 1-1/2 INCH ALUMINUM DISK STAMPED "LS 4965", PER R2, DOWN 0.1 FEET IN DIRT, ACCEPTED AS ANGLE POINT IN THE NW'LY LINE OF R7
- 30

FOUND 1 INCH IRON PIPE WITH TACK AND 3/4 INCH TAG STAMPED "LS 5346", NO REFERENCE, IN LIEU OF 5/8 INCH ALUMINUM PIN WITH 1-1/2 INCH ALUMINUM DISK STAMPED "LS 4965", PER R2, FLUSH IN DIRT, ACCEPTED AS ANGLE POINT IN THE NW'LY LINE OF R7
- 31

FOUND 1 INCH IRON PIPE WITH TACK AND 3/4 INCH TAG STAMPED "LS 5346", NO REFERENCE, IN LIEU OF 5/8 INCH ALUMINUM PIN WITH 1-1/2 INCH ALUMINUM DISK STAMPED "LS 4965", PER R2, DOWN 0.15 FEET IN DIRT, ACCEPTED AS ANGLE POINT IN THE NW'LY LINE OF R7
- 32

FOUND 5/8 INCH ALUMINUM PIN WITH 1-1/2 INCH ALUMINUM DISK STAMPED "LS 4965", PER R2, DOWN 1.0 FEET IN DIRT, ACCEPTED AS AN ANGLE POINT IN THE NW'LY LINE OF R7

ESTABLISHMENT NOTES

- A

ESTABLISHED THE CENTERLINE OF SANTIAGO CANYON ROAD BY HOLDING A LINE BETWEEN MONUMENTS 1 AND 2.
- B

ESTABLISHED THE CENTERLINE OF SANTIAGO CANYON ROAD BY HOLDING A RECORD RADIUS OF 1200 FEET PER R6 AND TANGENT TO LINE ESTABLISHMENTS A AND C.
- C

ESTABLISHED THE CENTERLINE OF SANTIAGO CANYON ROAD BY HOLDING A LINE BETWEEN MONUMENTS 2 AND 3.
- D

ESTABLISHED THE CENTERLINE OF SANTIAGO CANYON ROAD BY HOLDING A RECORD RADIUS OF 1200 FEET PER R6 AND TANGENT TO LINE ESTABLISHMENTS C AND E.
- E

ESTABLISHED THE CENTERLINE OF SANTIAGO CANYON ROAD BY HOLDING A LINE BETWEEN MONUMENTS 3 AND 6.
- F

ESTABLISHED THE CENTERLINE OF SANTIAGO CANYON ROAD BY HOLDING A RECORD RADIUS OF 1200 FEET PER R6 AND TANGENT TO LINE ESTABLISHMENTS E AND C.
- G

ESTABLISHED THE CENTERLINE OF SANTIAGO CANYON ROAD BY HOLDING A LINE BETWEEN MONUMENTS 6 AND 9.
- H

ESTABLISHED THE CENTERLINE OF SANTIAGO CANYON ROAD BY HOLDING A RECORD RADIUS OF 1200 FEET PER R6 AND TANGENT TO LINE ESTABLISHMENTS C AND I.
- I

ESTABLISHED THE CENTERLINE OF SANTIAGO CANYON ROAD BY HOLDING A LINE BETWEEN MONUMENTS 9 AND 13.
- J

ESTABLISHED THE N'LY RIGHT OF WAY OF SANTIAGO CANYON ROAD BY HOLDING A LINE PARALLEL, AND A RECORD DISTANCE OF 30 FEET PER R6 N'LY FROM LINE ESTABLISHMENTS A, B, C, D, E, F, G, H AND I.
- K

ESTABLISHED THE S'LY RIGHT OF WAY OF SANTIAGO CANYON ROAD BY HOLDING A LINE PARALLEL, AND A RECORD DISTANCE OF 30 FEET PER R6 S'LY FROM LINE ESTABLISHMENTS A, B, C, D, E, F, G, H AND I.
- L

ESTABLISHED THE E'LY PARCEL LINE PER R7 BY HOLDING A LINE BETWEEN MONUMENT 14 AND ESTABLISHMENT NOTE C.
- M

ESTABLISHED THE N'LY AND NE'LY LINES PER R7 BY HOLDING LINES BETWEEN MONUMENTS 14, 13, 16, 17, 18, 19, 20, 21, 22, 23, 24, 25, 26, 27, 28, 29, 30, 31 AND 32.
- N

ESTABLISHED THE W'LY PARCEL LINE PER R7 BY HOLDING A HOLDING RECORD ANGLE PER R7 SW'LY FROM ESTABLISHMENT M AT MONUMENT 31.
- O

ESTABLISHED A POINT ON THE CENTERLINE OF SANTIAGO CANYON ROAD BY INTERSECTION OF LINE ESTABLISHMENTS E AND C.
- P

ESTABLISHED THE POINT OF BEGINNING OF R7 BY HOLDING A RECORD DISTANCE OF 499.14 FEET PER R5 NW'LY FROM THE CENTERLINE EC OF ESTABLISHMENT NOTE H, ALONG ESTABLISHMENT NOTE D, POINT ALSO BEING AT THE N'LY TERMINUS OF THAT CERTAIN COURSE DESCRIBED AS N38°43'41"E 370.45 FEET IN THE GENERAL N'LY LINE OF PARCEL K OF R5.

NOTES

RECORD DISTANCES SHOWN HEREON ARE AS THEY APPEAR ON THE DOCUMENT OF RECORD. DISTANCES MAY BE EITHER GRID OR GROUND, AS PER SAID RECORD.

REFERENCEERENCE DOCUMENTS IN THE REFERENCEERENCE LEGEND ARE LIVE HYPERLINKS TO SAID DOCUMENT.

BASIS OF BEARINGS

THE BASIS OF BEARINGS FOR THIS SURVEY IS BASED ON THE CALIFORNIA COORDINATE SYSTEM (CCS83), ZONE VI, NAD 83, OCS (2017.50) EPOCH ADJUSTMENT, AS DETERMINED LOCALLY BY A LINE BETWEEN CONTINUOUS GLOBAL POSITIONING STATIONS CGPS STATIONS (WHYT) AND (OECC) BEING NORTH 41°50'42" WEST AS DERIVED FROM THE COORDINATES PUBLISHED BY THE CALIFORNIA SPATIAL REFERENCEERENCE CENTER (CSRC) ALONG WITH DATA SHEETS ON FILE IN THE OFFICE OF THE ORANGE COUNTY SURVEYOR.

HORIZONTAL DATUM

COORDINATES SHOWN ARE BASED ON THE CALIFORNIA COORDINATE SYSTEM (CCS83), ZONE VI, NAD 83, OCS (2017.50) EPOCH ADJUSTMENT.

ALL DISTANCES SHOWN ARE GRID, UNLESS OTHERWISE NOTED. TO OBTAIN GROUND DISTANCE MULTIPLY A GRID DISTANCE BY 1.00005237.

COMBINATION FACTOR WAS HELD AT POINT NUMBER 948
N:2226449.48', E:6115248.32', ELEVATION=847.78'

RECORD DISTANCES SHOWN HEREON ARE AS THEY APPEAR ON THE DOCUMENT OF RECORD. DISTANCES MAY BE EITHER GRID OR GROUND, AS PER SAID RECORD.

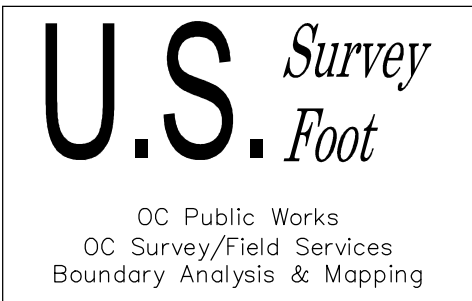
ALL DISTANCES ARE BASED ON THE U.S. SURVEY FOOT.

REFERENCES

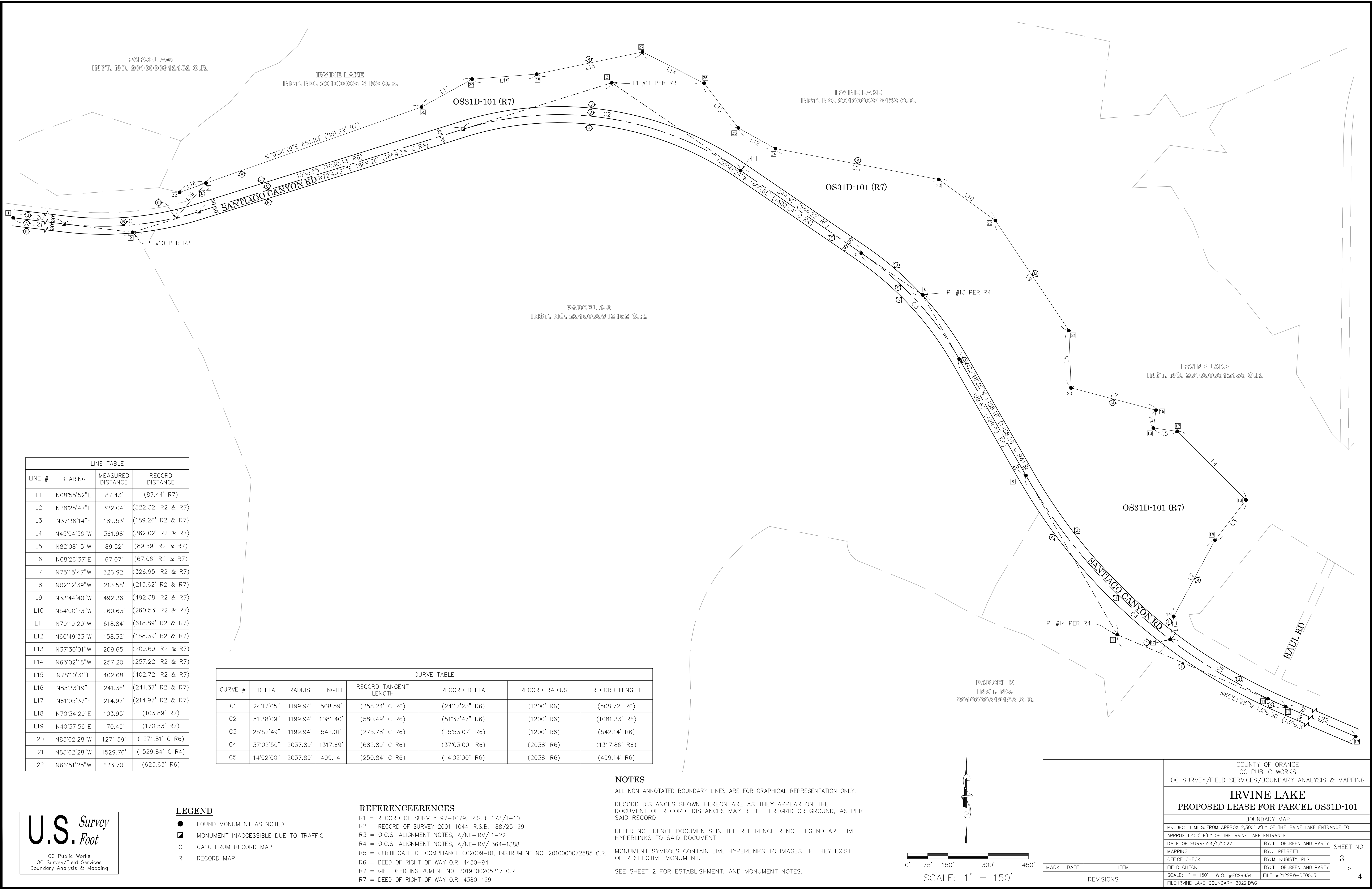
- R1 = RECORD OF SURVEY 97-1079, R.S.B. 173/1-10
R2 = RECORD OF SURVEY 2001-1044, R.S.B. 188/25-29
R3 = O.C.S. ALIGNMENT NOTES, A/NE-IRV/11-22
R4 = O.C.S. ALIGNMENT NOTES, A/NE-IRV/1364-1388
R5 = CERTIFICATE OF COMPLIANCE CC2009-01, INSTRUMENT NO. 2010000072885 O.R.
R6 = DEED OF RIGHT OF WAY O.R. 4430-94
R7 = GIFT DEED INSTRUMENT NO. 2019000205217 O.R.
R7 = DEED OF RIGHT OF WAY O.R. 4380-129

LEGEND

- FOUND MONUMENT AS NOTED
- MONUMENT INACCESSIBLE DUE TO TRAFFIC
- C CALC FROM RECORD MAP
- R RECORD MAP



			COUNTY OF ORANGE OC PUBLIC WORKS OC SURVEY/FIELD SERVICES/BOUNDARY ANALYSIS & MAPPING				
			IRVINE LAKE PROPOSED LEASE FOR PARCEL OS31D-101				
			BOUNDARY MAP				
			PROJECT LIMITS: FROM APPROX 2,300' W'LY OF THE IRVINE LAKE ENTRANCE TO APPROX 1,400' E'LY OF THE IRVINE LAKE ENTRANCE				
			DATE OF SURVEY: 4/1/2022		BY: T. LOFGREEN AND PARTY		SHEET NO. 2 of 4
			MAPPING		BY: J. PEDRETTI		
			OFFICE CHECK		BY: M. KUBISTY, PLS		
			FIELD CHECK		BY: T. LOFGREEN AND PARTY		
			SCALE: N/A		W.O. #EC29934		
			MARK	DATE	ITEM	FILE: IRVINE LAKE_BOUNDARY_2022.DWG	
REVISIONS							



LINE TABLE			
LINE #	BEARING	MEASURED DISTANCE	RECORD DISTANCE
L1	N08°55'52"E	87.43'	(87.44' R7)
L2	N28°25'47"E	322.04'	(322.32' R2 & R7)
L3	N37°36'14"E	189.53'	(189.26' R2 & R7)
L4	N45°04'56"W	361.98'	(362.02' R2 & R7)
L5	N82°08'15"W	89.52'	(89.59' R2 & R7)
L6	N08°26'37"E	67.07'	(67.06' R2 & R7)
L7	N75°15'47"W	326.92'	(326.95' R2 & R7)
L8	N02°12'39"W	213.58'	(213.62' R2 & R7)
L9	N33°44'40"W	492.36'	(492.38' R2 & R7)
L10	N54°00'23"W	260.63'	(260.53' R2 & R7)
L11	N79°19'20"W	618.84'	(618.89' R2 & R7)
L12	N60°49'33"W	158.32'	(158.39' R2 & R7)
L13	N37°30'01"W	209.65'	(209.69' R2 & R7)
L14	N63°02'18"W	257.20'	(257.22' R2 & R7)
L15	N78°10'31"E	402.68'	(402.72' R2 & R7)
L16	N85°33'19"E	241.36'	(241.37' R2 & R7)
L17	N61°05'37"E	214.97'	(214.97' R2 & R7)
L18	N70°34'29"E	103.95'	(103.89' R7)
L19	N40°37'56"E	170.49'	(170.53' R7)
L20	N83°02'28"W	1271.59'	(1271.81' C R6)
L21	N83°02'28"W	1529.76'	(1529.84' C R4)
L22	N66°51'25"W	623.70'	(623.63' R6)

CURVE TABLE							
CURVE #	DELTA	RADIUS	LENGTH	RECORD TANGENT LENGTH	RECORD DELTA	RECORD RADIUS	RECORD LENGTH
C1	24°17'05"	1199.94'	508.59'	(258.24' C R6)	(24°17'23" R6)	(1200' R6)	(508.72' R6)
C2	51°38'09"	1199.94'	1081.40'	(580.49' C R6)	(51°37'47" R6)	(1200' R6)	(1081.33' R6)
C3	25°52'49"	1199.94'	542.01'	(275.78' C R6)	(25°53'07" R6)	(1200' R6)	(542.14' R6)
C4	37°02'50"	2037.89'	1317.69'	(682.89' C R6)	(37°03'00" R6)	(2038' R6)	(1317.86' R6)
C5	14°02'00"	2037.89'	499.14'	(250.84' C R6)	(14°02'00" R6)	(2038' R6)	(499.14' R6)

NOTES

ALL NON ANNOTATED BOUNDARY LINES ARE FOR GRAPHICAL REPRESENTATION ONLY.

RECORD DISTANCES SHOWN HEREON ARE AS THEY APPEAR ON THE DOCUMENT OF RECORD. DISTANCES MAY BE EITHER GRID OR GROUND, AS PER SAID RECORD.

REFERENCEERENCE DOCUMENTS IN THE REFERENCEERENCE LEGEND ARE LIVE HYPERLINKS TO SAID DOCUMENT.

MONUMENT SYMBOLS CONTAIN LIVE HYPERLINKS TO IMAGES, IF THEY EXIST, OF RESPECTIVE MONUMENT.

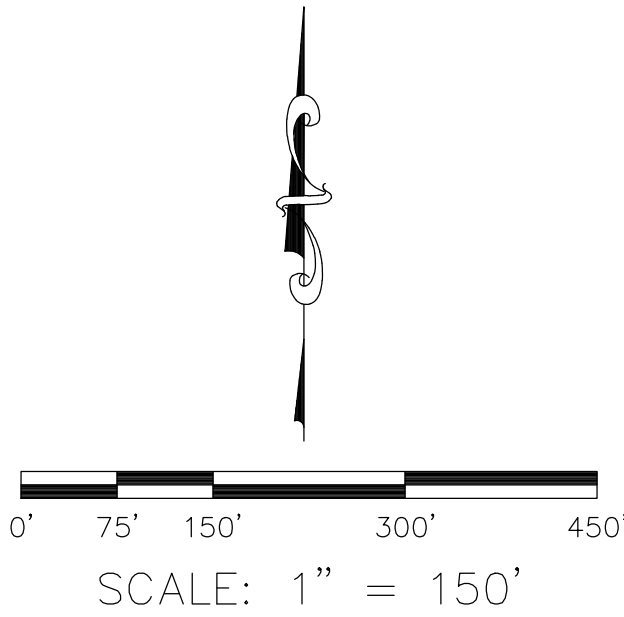
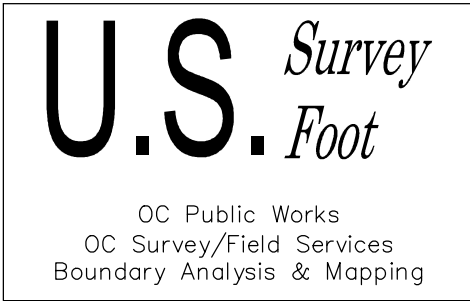
SEE SHEET 2 FOR ESTABLISHMENT, AND MONUMENT NOTES.

REFERENCEENCES

R1 = RECORD OF SURVEY 97-1079, R.S.B. 173/1-10
R2 = RECORD OF SURVEY 2001-1044, R.S.B. 188/25-29
R3 = O.C.S. ALIGNMENT NOTES, A/NE-IRV/11-22
R4 = O.C.S. ALIGNMENT NOTES, A/NE-IRV/1364-1388
R5 = CERTIFICATE OF COMPLIANCE CC2009-01, INSTRUMENT NO. 2010000072885 O.R.
R6 = DEED OF RIGHT OF WAY O.R. 4430-94
R7 = GIFT DEED INSTRUMENT NO. 2019000205217 O.R.
R7 = DEED OF RIGHT OF WAY O.R. 4380-129

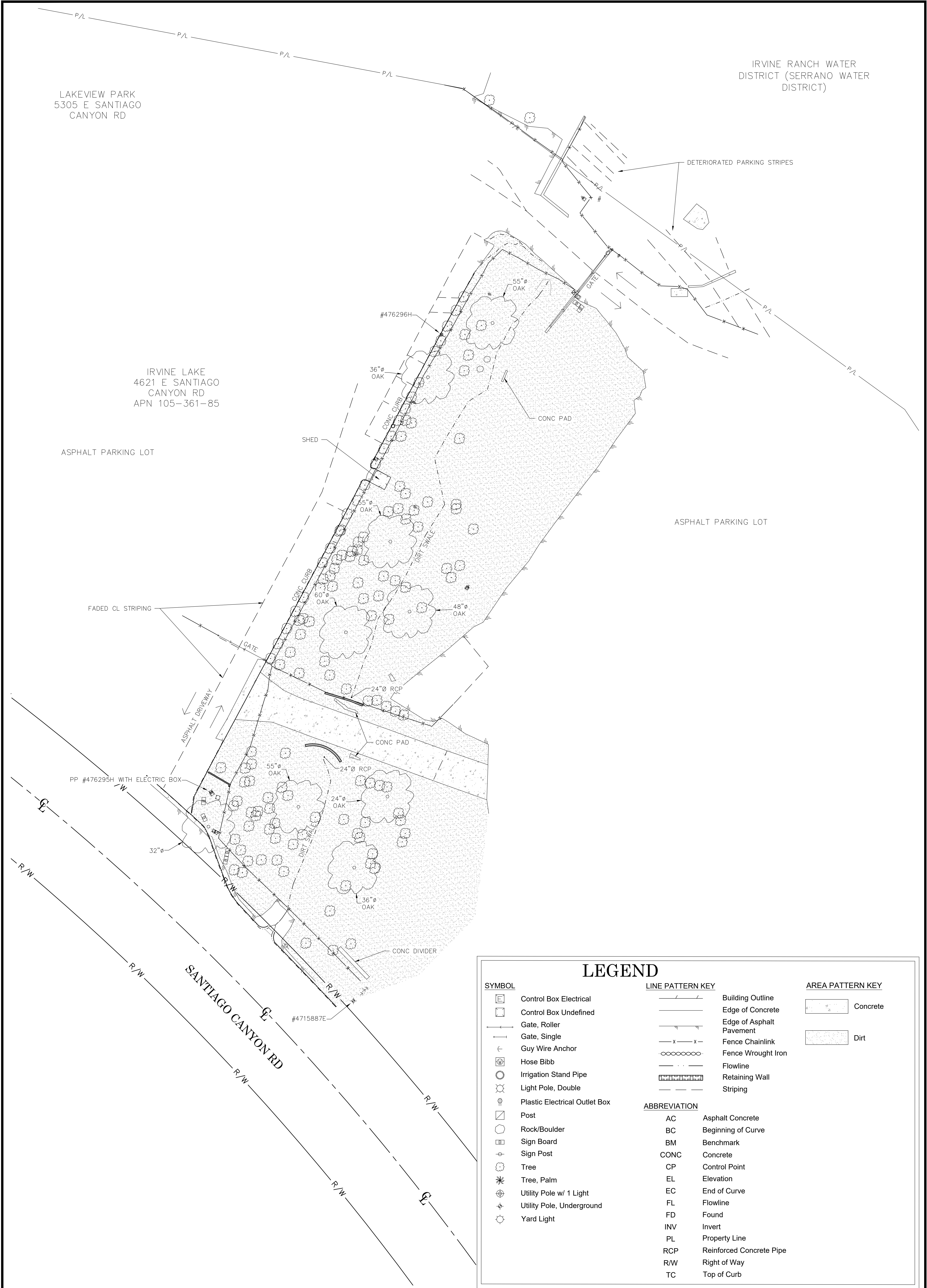
LEGEND

- FOUND MONUMENT AS NOTED
- MONUMENT INACCESSIBLE DUE TO TRAFFIC
- C CALC FROM RECORD MAP
- R RECORD MAP



		COUNTY OF ORANGE OC PUBLIC WORKS OC SURVEY/FIELD SERVICES/BOUNDARY ANALYSIS & MAPPING			
		IRVINE LAKE PROPOSED LEASE FOR PARCEL OS31D-101			
		BOUNDARY MAP			
		PROJECT LIMITS: FROM APPROX 2,300' WLY OF THE IRVINE LAKE ENTRANCE TO APPROX 1,400' E'LY OF THE IRVINE LAKE ENTRANCE			
		DATE OF SURVEY: 4/1/2022		BY: T. LOFGREEN AND PARTY	
		MAPPING		BY: J. PEDRETTI	
		OFFICE CHECK		BY: M. KUBISTY, PLS	
		FIELD CHECK		BY: T. LOFGREEN AND PARTY	
		SCALE: 1" = 150' W.O. #EC29934		FILE # 2122PW-RE0003	
		FILE: IRVINE LAKE_BOUNDARY_2022.DWG			
MARK	DATE	ITEM			
REVISIONS					

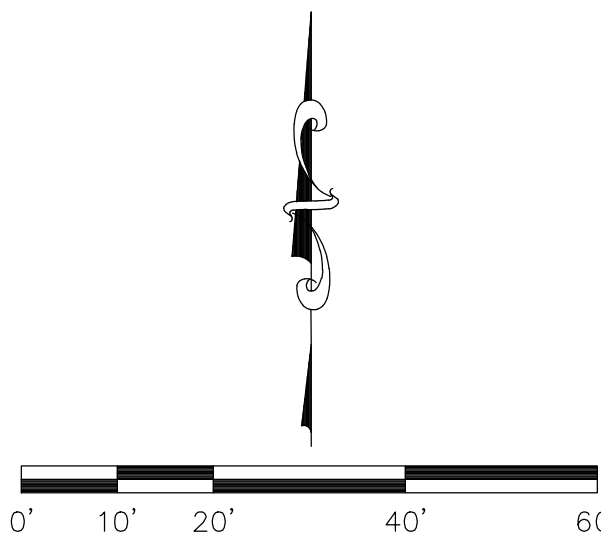
SHEET NO. 3 of 4



LEGEND

SYMBOL	LINE PATTERN KEY	AREA PATTERN KEY

ABBREVIATION	
AC	Asphalt Concrete
BC	Beginning of Curve
BM	Benchmark
CONC	Concrete
CP	Control Point
EL	Elevation
EC	End of Curve
FL	Flowline
FD	Found
INV	Invert
PL	Property Line
RCP	Reinforced Concrete Pipe
R/W	Right of Way
TC	Top of Curb



U.S. Survey
Foot
OC Public Works
OC Survey/Field Services
Boundary Analysis & Mapping

			COUNTY OF ORANGE OC PUBLIC WORKS OC SURVEY/FIELD SERVICES/BOUNDARY ANALYSIS & MAPPING			
			IRVINE LAKE LOT LINE ADJ. PROPOSE LEASE FOR PARCEL OS31D-101			
			TOPOGRAPHIC MAP			
			PROJECT LIMITS: FROM APPROX 2,300' W/LY OF THE IRVINE LAKE ENTRANCE TO APPROX 1,400' E/LY OF THE IRVINE LAKE ENTRANCE			
			DATE OF SURVEY: 4/1/2022		BY: T. LOFGREEN AND PARTY	
			MAPPING		BY: J. PEDRETTI	
			OFFICE CHECK		BY: M. KUBISTY, PLS	
			FIELD CHECK		BY: T. LOFGREEN AND PARTY	
			SCALE: 1" = 20'		FILE # 2122PW-RE0003	
			FILE: IRVINE LAKE TOPO 2022.DWG			
MARK	DATE	ITEM	SHEET NO.			
			4			
REVISIONS			of			
			4			