



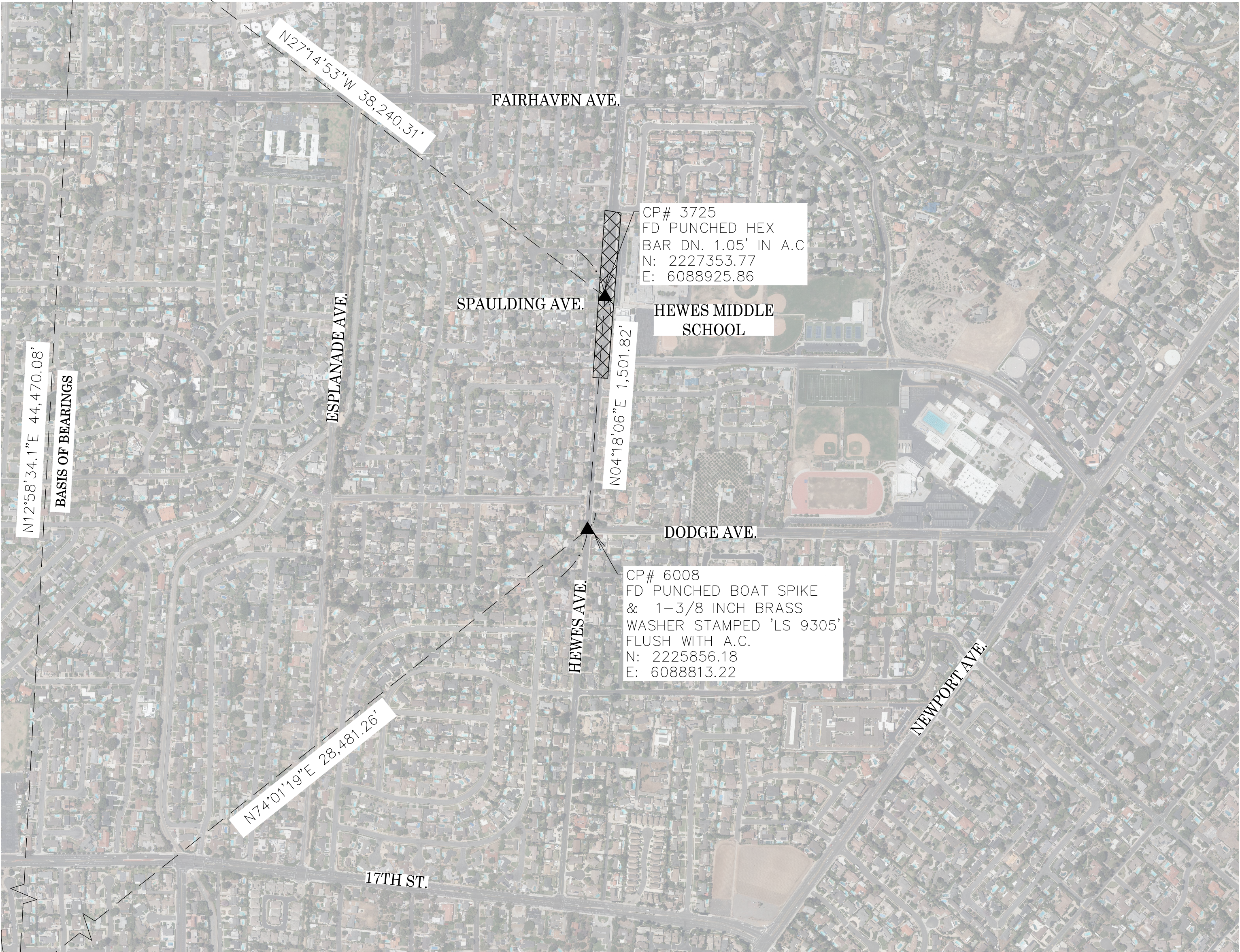
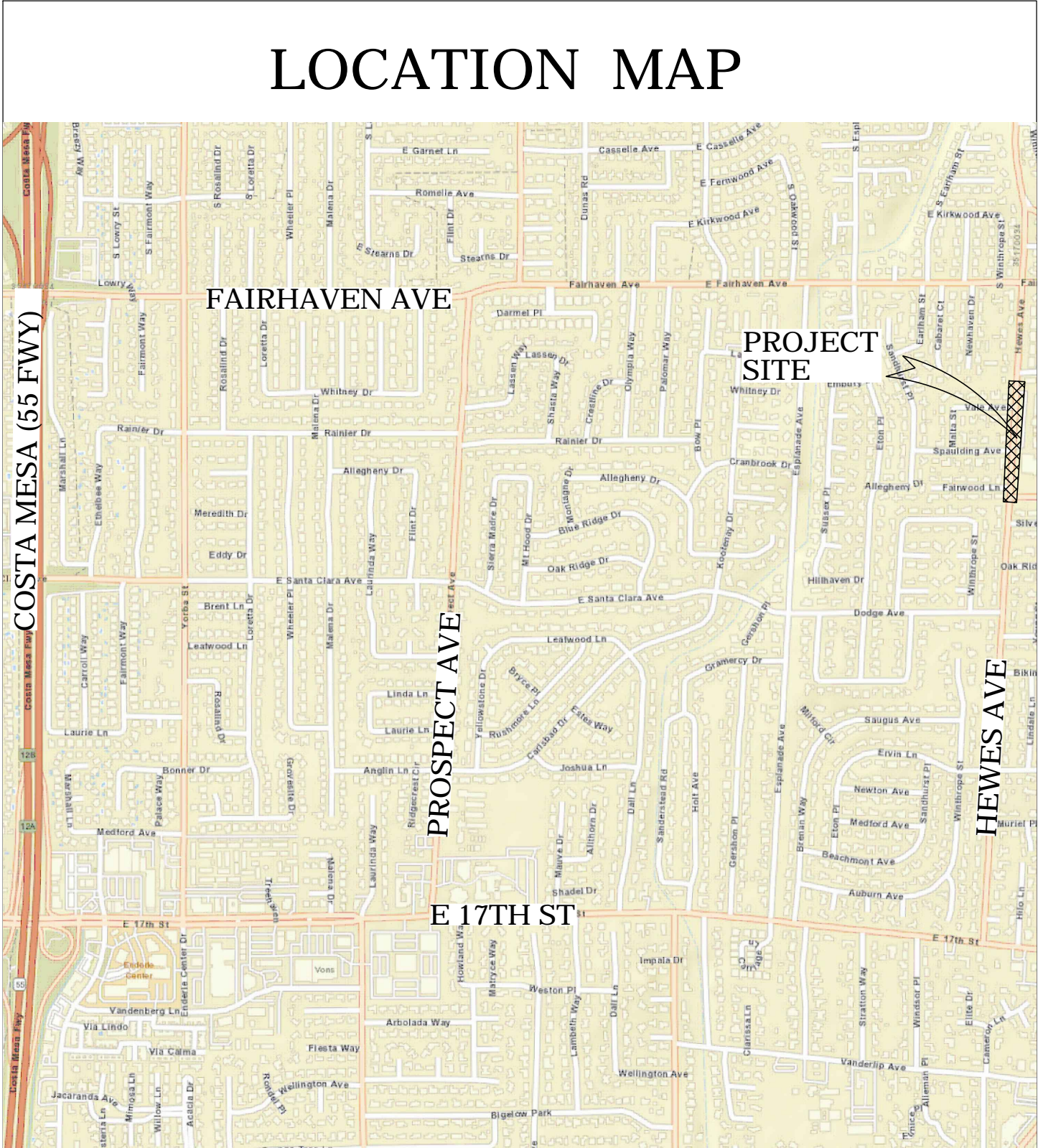
OC PUBLIC WORKS DEPARTMENT
JAMES TREADAWAY, DIRECTOR OF PUBLIC WORKS



HEWES MIDDLE SCHOOL

FOUND CGPS "CCCS"
N: 2261350.67
E: 6071417.81
THIS IS A CONTINUOUS GPS STATION
(CGPS) AND IS PART OF THE CALIFORNIA
SPATIAL REFERENCE NETWORK (CSRN).

N.T.S.



BASIS OF BEARINGS

THE BASIS OF BEARINGS FOR THIS SURVEY IS A LINE BETWEEN CONTINUOUS
GLOBAL POSITIONING STATIONS (SACY) AND (CCCS) BEING
NORTH 12°58'34.1" EAST AS DERIVED FROM THE COORDINATES PUBLISHED BY
THE CALIFORNIA SPATIAL REFERENCE CENTER (CSRC) ALONG WITH DATA
SHEETS ON FILE IN THE OFFICE OF THE ORANGE COUNTY SURVEYOR.

HORIZONTAL DATUM

COORDINATES SHOWN ARE BASED ON THE CALIFORNIA COORDINATE SYSTEM
(CCS83), ZONE VI, NAD 83, OCS (2017.50) EPOCH ADJUSTMENT.
ALL DISTANCES SHOWN ARE GRID, UNLESS OTHERWISE NOTED. TO OBTAIN
GROUND DISTANCES MULTIPLY GRID BY A COMBINED FACTOR OF 1.00002320.
THIS COMBINATION FACTOR WAS DERIVED BY AN AVERAGE OF POINTS:

#3725
N: 2227353.77 E: 6088925.86 ELEVATION=241.08'
#6008
N: 2225856.18 E: 6088813.22 ELEVATION=224.35'

ALL DISTANCES ARE BASED ON THE U.S. SURVEY FOOT.

VERTICAL DATUM

O.C.S. BM. 3C-22-71 ELEV. = 174.752' YEAR LEVELED: 2015
NAVD 1988 (O.C.S. 1995 ADJUSTMENT)

DESCRIPTION: MONUMENT IS SET IN KNOWN SUBSIDENCE ZONE AND MAY NOT
FIT ADJACENT BENCHMARKS. DESCRIBED BY OCS 2001 - FOUND 3 3/4" OCS
ALUMINUM BENCHMARK DISK STAMPED "3C-22-71", SET IN THE TOP OF A 4
IN. BY 4 IN. CONCRETE POST. MONUMENT IS LOCATED IN THE SOUTHEAST
CORNER OF THE INTERSECTION OF LAMBETH WAY AND 17TH STREET, 43 FT.
SOUTHERLY OF THE CENTERLINE OF 17TH STREET AND 42.6 FT. EASTERLY OF
THE CENTERLINE OF LAMBETH WAY. MONUMENT IS SET UP 0.1 FT. FROM THE
TOP OF CURB.

NOTES

THE SURVEY INFORMATION SHOWN HEREON IS TO BE USED FOR TOPOGRAPHIC
RELATIONSHIPS ONLY AND IS NOT INTENDED FOR LAND ACQUISITION OR
BOUNDARY PURPOSES.

SHEET INDEX

SHEET	NO.	DESCRIPTION
SHEET 1	1	TITLE SHEET
SHEET 2	2	BOUNDARY MAP
SHEETS 3-4	3-4	TOPOGRAPHIC MAP

PURPOSE OF SURVEY

THE PURPOSE OF THE SURVEY IS TO PROVIDE A TOPOGRAPHIC MAP AND RIGHT
OF WAY ESTABLISHMENT ALONG HEWES AVE BETWEEN FOOTHILL BLVD AND
DEEP WELL RD.

SENIOR LAND SURVEYOR'S CERTIFICATE:

THIS MAP CORRECTLY REPRESENTS A SURVEY MADE BY ME
OR UNDER MY DIRECTION IN CONFORMANCE WITH
REQUIREMENTS OF THE PROFESSIONAL LAND SURVEYOR'S
ACT; THIS 24 DAY OF SEPTEMBER, 2024.

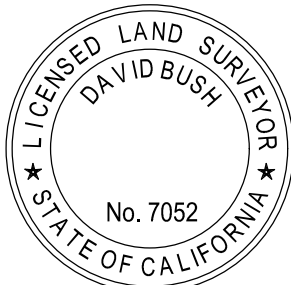
ELLIOTT MEDINA, PLS. SENIOR LAND SURVEYOR



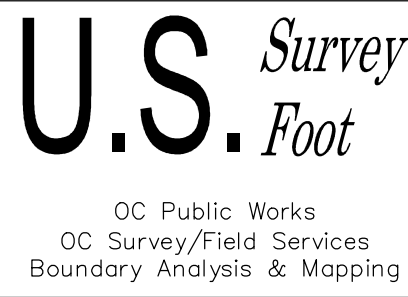
SENIOR LAND SURVEYOR'S CERTIFICATE:

THIS MAP HAS BEEN EXAMINED IN ACCORDANCE WITH THE
PROFESSIONAL LAND SURVEYORS' ACT; THIS 24 DAY OF
SEPTEMBER, 2024.

DAVID BUSH, PLS. SENIOR LAND SURVEYOR

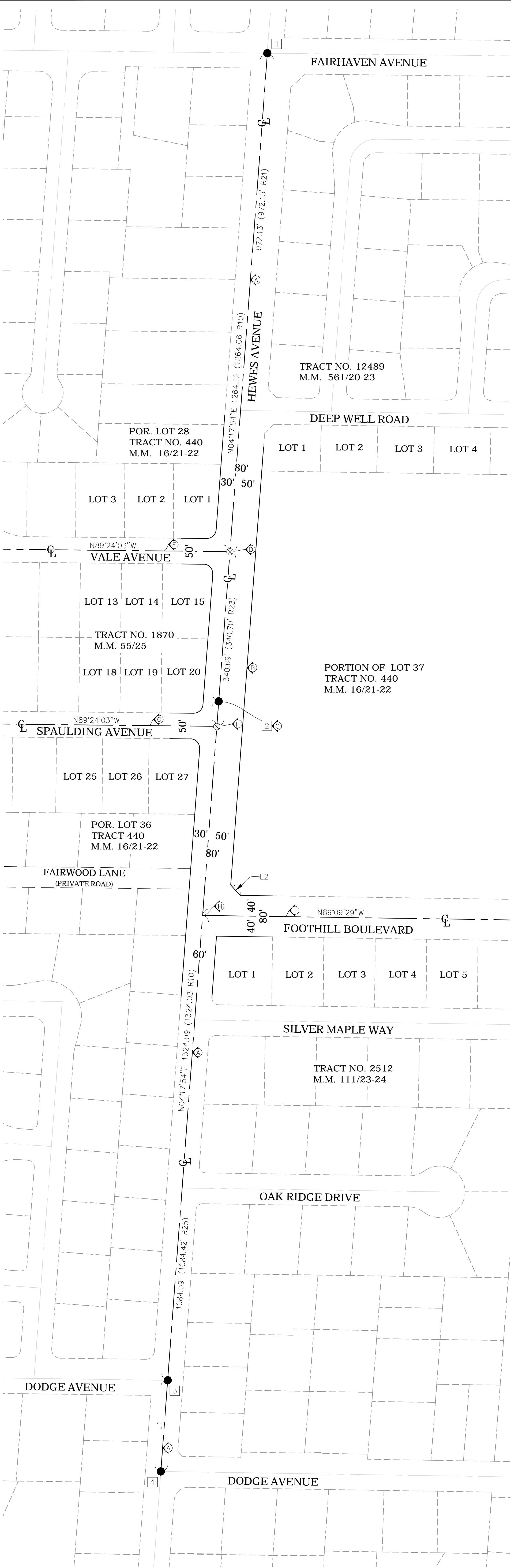


FOUND CGPS "SACY"
N: 2218016.19
E: 6061432.26
THIS IS A CONTINUOUS GPS STATION
(CGPS) AND IS PART OF THE CALIFORNIA
SPATIAL REFERENCE NETWORK (CSRN).



TOPOGRAPHIC MAPPING PROJECT

COUNTY OF ORANGE OC PUBLIC WORKS OC SURVEY/FIELD SERVICES/BOUNDARY ANALYSIS & MAPPING			
HEWES MIDDLE SCHOOL			
TITLE SHEET			
PROJECT LIMITS: FROM INTERSECTION OF HEWES AVE AND FOOTHILL BLVD TO INTERSECTION OF HEWES AVE AND DEEP WELL RD.			
DATE OF SURVEY: 08/27/2024		BY: R. BELTRAN & CREW	
MAPPING		BY: P. MAQUIRE, PLS	
OFFICE CHECK		BY: D. BUSH, PLS	
FIELD CHECK		BY: R. BELTRAN & CREW	
SCALE: N.T.S.		W.O. #ER20268	
FILE: HEWES_TOPO_2024.DWG		FILE #2425PW-ENG0002	
MARK	DATE	ITEM	
REVISIONS			
			SHEET NO. 1 of 4



REFERENCES

- (R1) = TRACT NO. 440, MM 16/21-22
(R10) = O.C.S. ALIGNMENT NOTE A/5-9/799-809
(R11) = O.C.S. ALIGNMENT NOTE A/5-9/151-166
(R12) = CORNER RECORD, C.R. 2020-2599
(R13) = CORNER RECORD, C.R. 2020-2600
(R14) = CORNER RECORD, C.R. 2020-2601
(R20) = R.O.W. MAP, Z21-140
(R21) = COUNTY TOPOGRAPHIC MAP 067PW-RD560004
(R22) = RECORD OF SURVEY RSB. 30/15
(R23) = TRACT NO. 1870, MM 55/25
(R24) = TRACT NO. 2512, MM 111/23-24
(R25) = TRACT NO. 5111, MM 184/16-17
(R26) = O.R. 7967/705 RECORDED DOCUMENTS

LEGEND

- FOUND MONUMENT AS NOTED
⊗ S.F.N. - SEARCHED, FOUND NOTHING
C CALC FROM RECORD MAP
R RECORD MAP

MONUMENT NOTES

- 1 FOUND PUNCHED HEX BAR PER (R11)&(R12), DOWN 1.4' IN O.C.S. WELL MONUMENT. ACCEPTED AS CENTERLINE INTERSECTION OF HEWES AVENUE AND FAIRHAVEN AVENUE.
2 FOUND PUNCHED HEX BAR PER (R11), DOWN 1.05 FEET, O.C.S. WELL MONUMENT HOUSING MISSING, S85°42'06"E 0.09' FROM THE SE'LY CORNER OF LOT 35 OF (R1).
3 FOUND PUNCHED HEX BAR IN O.C.S. WELL MONUMENT PER (R11) AND (R13), DOWN 1.2 FEET. ACCEPTED AS CENTERLINE INTERSECTION OF HEWES AVENUE AND DODGE AVE (NORTH).
4 FOUND PUNCHED BOAT SPIKE AND 1 3/8 INCH BRASS WASHER STAMPED "L.S. 9305", PER (R14), FLUSH IN AC. ACCEPTED AS THE CENTERLINE INTERSECTION OF HEWES AVE AND DODGE AVE (SOUTH).

ESTABLISHMENT NOTES

- A ESTABLISHED THE CENTERLINE OF HEWES AVENUE BY HOLDING A LINE BETWEEN MONUMENTS 1 AND 4.
B ESTABLISHED THE SE'LY RIGHT OF WAY OF HEWES AVENUE BY HOLDING A LINE PARALLEL WITH, AND A RECORD DISTANCE OF 50 FEET PER (R20) SE'LY FROM LINE ESTABLISHMENT A.
C ESTABLISHED THE SE'LY CORNER OF LOT 35 OF (R1) BY HOLDING A POINT PERPENDICULAR TO MONUMENT 2 ON LINE ESTABLISHMENT A.
D ESTABLISHED THE INTERSECTION OF VALE AVENUE AND HEWES AVENUE OF (R23) BY HOLDING A RECORD DISTANCE OF 972.15' PER (R21) FROM MONUMENT 1 S'LY ALONG ESTABLISHMENT A.
E ESTABLISHED THE CENTERLINE VALE AVENUE OF (R21) BY HOLDING A RECORD ANGLE PER (R23) W'LY FROM ESTABLISHMENT D.
F ESTABLISHED THE INTERSECTION OF SPAULDING AVENUE AND HEWES AVENUE OF (R23) BY HOLDING A RECORD DISTANCE OF 340.70' PER (R23) FROM ESTABLISHMENT D S'LY ALONG ESTABLISHMENT A.
G ESTABLISHED THE CENTERLINE SPAULDING AVENUE OF (R23) BY HOLDING A RECORD ANGLE PER (R21) W'LY FROM ESTABLISHMENT D AT ESTABLISHMENT F.
H ESTABLISHED THE INTERSECTION OF FOOTHILL BOULEVARD AND HEWES AVENUE OF (R25) BY HOLDING A RECORD DISTANCE OF 1084.42' PER (R25) FROM MONUMENT 4 S'LY ALONG ESTABLISHMENT A.
I ESTABLISHED THE CENTERLINE FOOTHILL BOULEVARD OF (R24) BY HOLDING A RECORD ANGLE PER (R10) E'LY FROM ESTABLISHMENT A AT ESTABLISHMENT H.

NOTES

ALL BOUNDARY LINES NOT SHOWN IN BOLD ARE FOR GRAPHICAL REPRESENTATION ONLY.

RECORD DISTANCES SHOWN HEREON ARE AS THEY APPEAR ON THE DOCUMENT OF RECORD. DISTANCES MAY BE EITHER GRID OR GROUND, AS PER SAID RECORD.

REFERENCE DOCUMENTS IN THE REFERENCE LEGEND ARE LIVE HYPERLINKS TO SAID DOCUMENT.

MONUMENT SYMBOLS CONTAIN LIVE HYPERLINKS TO IMAGES, IF THEY EXIST, OF RESPECTIVE MONUMENT.

BASIS OF BEARINGS

THE BASIS OF BEARINGS FOR THIS SURVEY IS A LINE BETWEEN CONTINUOUS GLOBAL POSITIONING STATIONS (SACY) AND (CCCS) BEING NORTH 12° 58' 34.1" EAST AS DERIVED FROM THE COORDINATES PUBLISHED BY THE CALIFORNIA SPATIAL REFERENCE CENTER (CSRC) ALONG WITH DATA SHEETS ON FILE IN THE OFFICE OF THE ORANGE COUNTY SURVEYOR.

HORIZONTAL DATUM

COORDINATES SHOWN ARE BASED ON THE CALIFORNIA COORDINATE SYSTEM (CCS83), ZONE VI, NAD 83, OCS (2017.50) EPOCH ADJUSTMENT.

ALL DISTANCES SHOWN ARE GRID, UNLESS OTHERWISE NOTED. TO OBTAIN GROUND DISTANCES MULTIPLY GRID BY A COMBINED FACTOR OF 1.00002320.

THIS COMBINATION FACTOR WAS DERIVED BY AN AVERAGE OF POINTS:

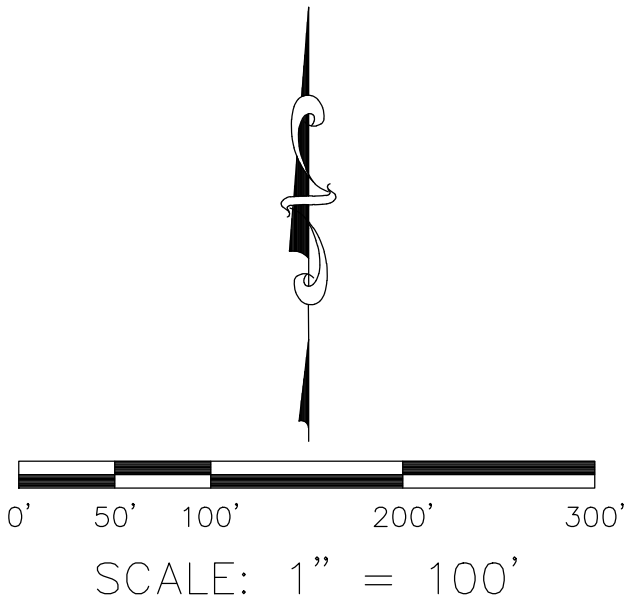
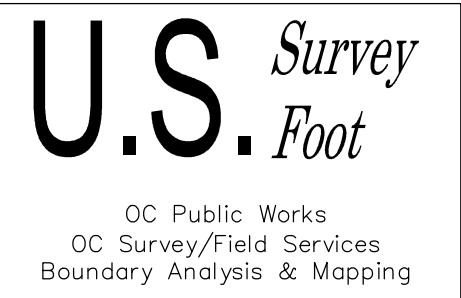
#3725
N:2227353.77 E:6088925.86 ELEVATION=241.08'

#6008
N:2225856.18 E:6088813.22 ELEVATION=224.35'

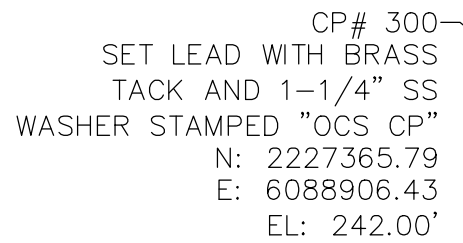
AS SHOWN ON SHEET 1.

ALL DISTANCES ARE BASED ON THE U.S. SURVEY FOOT.

LINE TABLE			
LINE #	BEARING	MEASURED DISTANCE	RECORD DISTANCE
L1	N04°17'54"E	177.73'	177.72' (R10)
L2	N42°25'48"W	27.42'	27.42' (R26)



			COUNTY OF ORANGE OC PUBLIC WORKS OC SURVEY/FIELD SERVICES/BOUNDARY ANALYSIS & MAPPING				
			HEWES MIDDLE SCHOOL				
			BOUNDARY MAP				
			PROJECT LIMITS: FROM INTERSECTION OF HEWES AVE AND FOOTHILL BLVD TO INTERSECTION OF HEWES AVE AND DEEP WELL RD				
			DATE OF SURVEY: 08/27/2024		BY: R. BELTRAN & CREW		SHEET NO. 2 of 4
			MAPPING		BY: P. MAGUIRE, PLS		
			OFFICE CHECK		BY: D. BUSH, PLS		
			FIELD CHECK		BY: R. BELTRAN & CREW		
			SCALE: 1"=100'		W.O. #ER20268		
			MARK	DATE	ITEM	FILE # 2425PW-ENG0002	
REVISIONS			FILE: HEWES_BOUNDARY_2024.DWG				



HEWES AVE

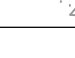
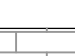
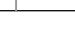
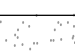

FOOTHIL BLVD

CP# 301
SET LEAD WITH BRASS
TACK AND 1-1/4" SS
WASHER STAMPED "OCS CP"
N: 2227009.19
E: 6088942.34
EL: 237.95'

$$EL = 237.08'$$

TG EL = 236.41











AREA PATTERN KEY

	Concrete
	Brick
	Dirt
	Grass
	Gravel

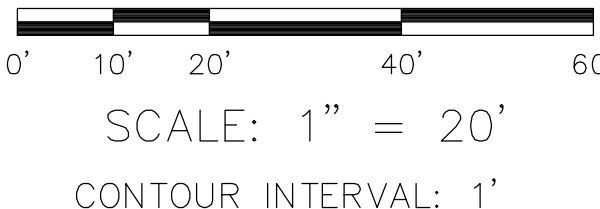
ABBREVIATION

AC	Asphalt Concrete
BC	Beginning of Curve
BM	Benchmark
CL	Centerline
CLR	Clearance
CONC	Concrete
CP	Control Point
CMP	Corrugated Metal Pipe
DWS	Detectable Warning Surface
DWY	Driveway
EL	Elevation
EC	End of Curve
FS	Finished Surface
FL	Flowline
FD	Found
INV	Invert
TC	Top of Curb
TW	Top of Wall

LINE PATTERN KEY

	Bush Row Outline
	Centerline
	Edge of Concrete
	Edge of Asphalt Pavement
	Fence Chainlink
	Fence Wood
	Fence Wrought Iron
	Flowline
	Guard Rail
	Right of Way

OC Public Works
OC Survey/Field Services
Boundary Analysis & Mapping



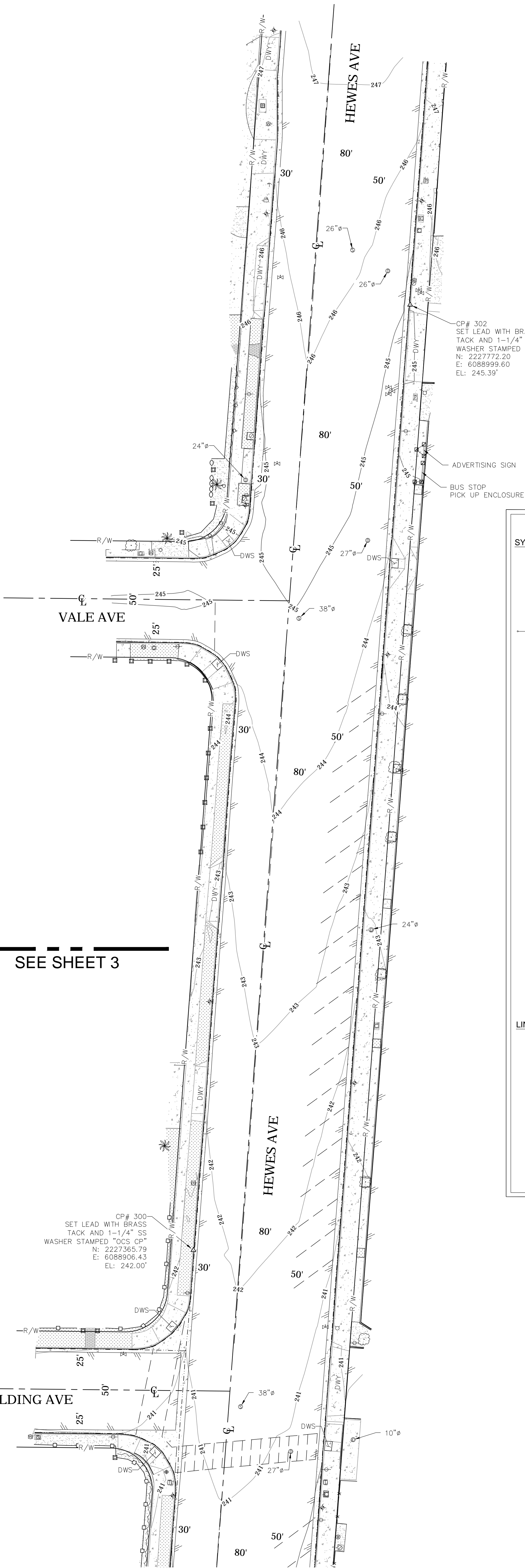
			COUNTY OF ORANGE OC PUBLIC WORKS OC SURVEY/FIELD SERVICES/BOUNDARY ANALYSIS & MAPPING		
			<h2 style="text-align: center;">HEWES MIDDLE SCHOOL</h2>		
			TOPOGRAPHIC MAP		
			PROJECT LIMITS: FROM INTERSECTION OF HEWES AVE AND FOOTHILL BLVD TO INTERSECTION OF HEWES AVE AND DEEP WELL RD		
			DATE OF SURVEY: 08/27/2024	BY: R. BELTRAN & CREW	
			MAPPING	BY: P. MAGUIRE, PLS	
			OFFICE CHECK	BY: D. BUSH, PLS	
			FIELD CHECK	BY: R. BELTRAN & CREW	
			SCALE: 1" = 20'	W.O. #ER20268	FILE # 2425PW-ENG0002
			FILE: HEWES_TOPO_2024.DWG		
			REVISIONS		
MARK	DATE	ITEM			

SHEET NO.

3

of

4



SEE SHEET 3

SYMBOL

- Control Box Cable TV
- Control Box Electrical
- Control Point
- Drop Inlet
- Fire Hydrant
- Gate, Double
- Guy Wire Anchor
- Mailbox
- Manhole Sewer
- Manhole Storm Drain
- Meter Water
- Meter Gas
- Pilaster
- Post
- Pull Box Cable TV
- Pull Box Telephone
- Pull Box Traffic
- Pull Box Undefined
- Sewer Cleanout
- Sign Post
- Tree
- Tree, Palm
- Utility Pole w/ 1 Light
- Utility Pole w/ 2 Lights
- Utility Pole, Underground
- Valve Water
- Vault Undefined
- Vent Pipe
- Water Line
- Appurtenance-Undefined
- Yard Light

LINE PATTERN KEY

- Bush Row Outline
- Centerline
- Edge of Concrete
- Edge of Asphalt
- Pavement
- Fence Chainlink
- Fence Wood
- Fence Wrought Iron
- Flowline
- Guard Rail
- Right of Way

LEGEND

AREA PATTERN KEY

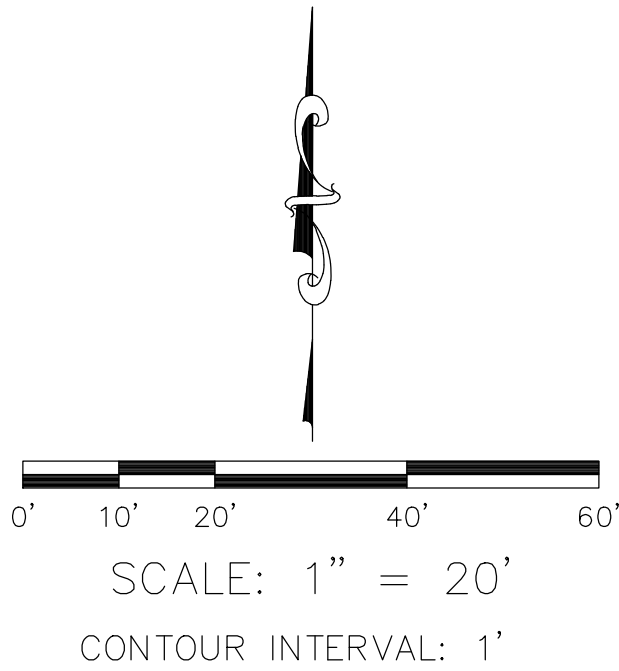
- Concrete
- Brick
- Dirt
- Grass
- Gravel

ABBREVIATION

- | | |
|------|----------------------------|
| AC | Asphalt Concrete |
| BC | Beginning of Curve |
| BM | Benchmark |
| CL | Centerline |
| CLR | Clearance |
| CONC | Concrete |
| CP | Control Point |
| CMP | Corrugated Metal Pipe |
| DWS | Detectable Warning Surface |
| DWY | Driveway |
| EL | Elevation |
| EC | End of Curve |
| FS | Finished Surface |
| FL | Flowline |
| FD | Found |
| INV | Invert |
| TC | Top of Curb |
| TW | Top of Wall |

U.S. Survey Foot

OC Public Works
OC Survey/Field Services
Boundary Analysis & Mapping



		COUNTY OF ORANGE OC PUBLIC WORKS OC SURVEY/FIELD SERVICES/BOUNDARY ANALYSIS & MAPPING	
		HEWES MIDDLE SCHOOL	
		TOPOGRAPHIC MAP	
		PROJECT LIMITS: FROM INTERSECTION OF HEWES AVE AND FOOTHILL BLVD TO INTERSECTION OF HEWES AVE AND DEEP WELL RD	
		DATE OF SURVEY: 08/27/2024	BY: R. BELTRAN & CREW
		MAPPING	BY: P. MAQUIRE, PLS
		OFFICE CHECK	BY: D. BUSH, PLS
		FIELD CHECK	BY: R. BELTRAN & CREW
		SCALE: N.T.S.	W.O. #ER20268
		FILE: #2425PW-ENG0002	
		FILE: HEWES_TOPO_2024.DWG	
MARK	DATE	ITEM	
REVISIONS			