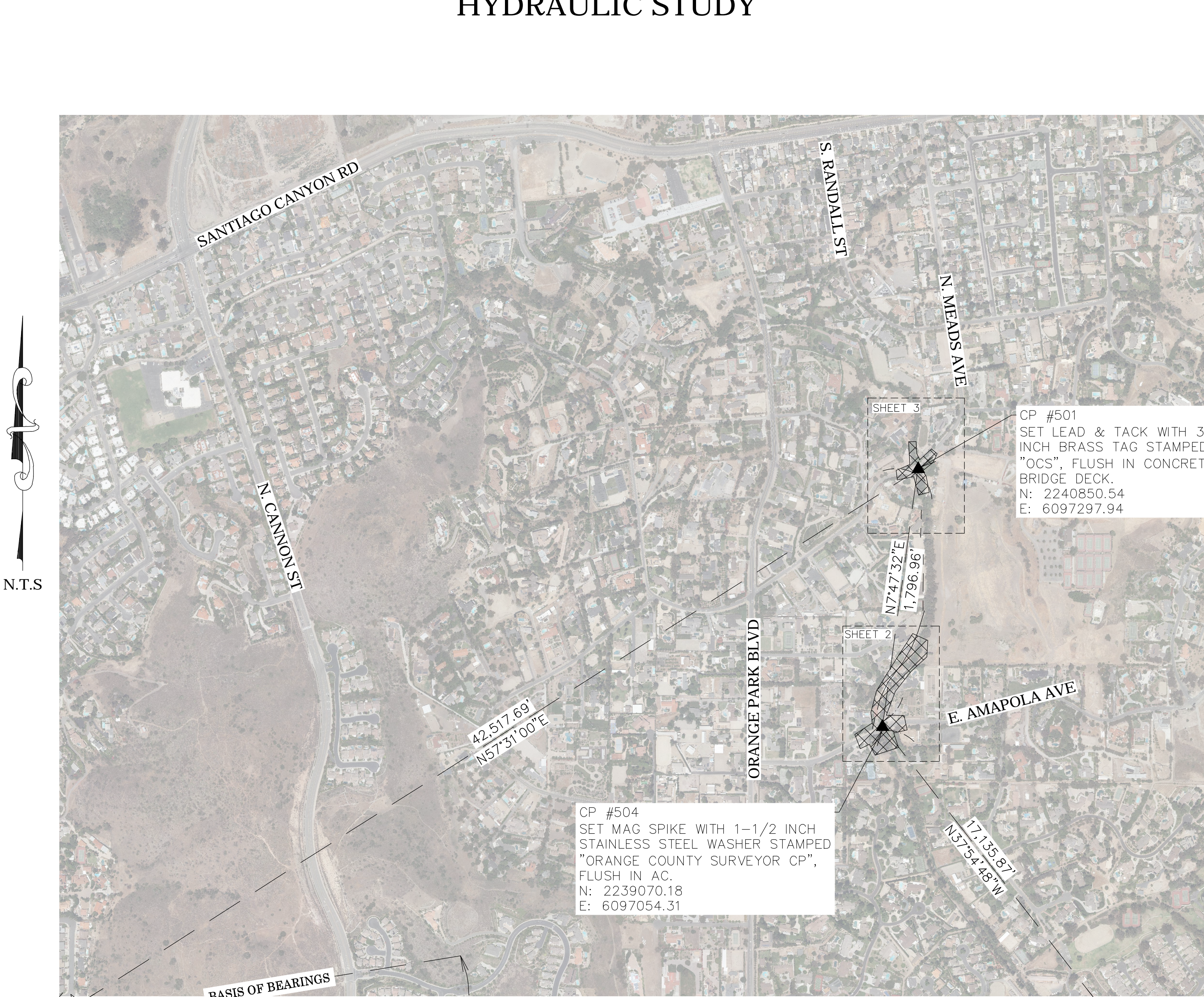
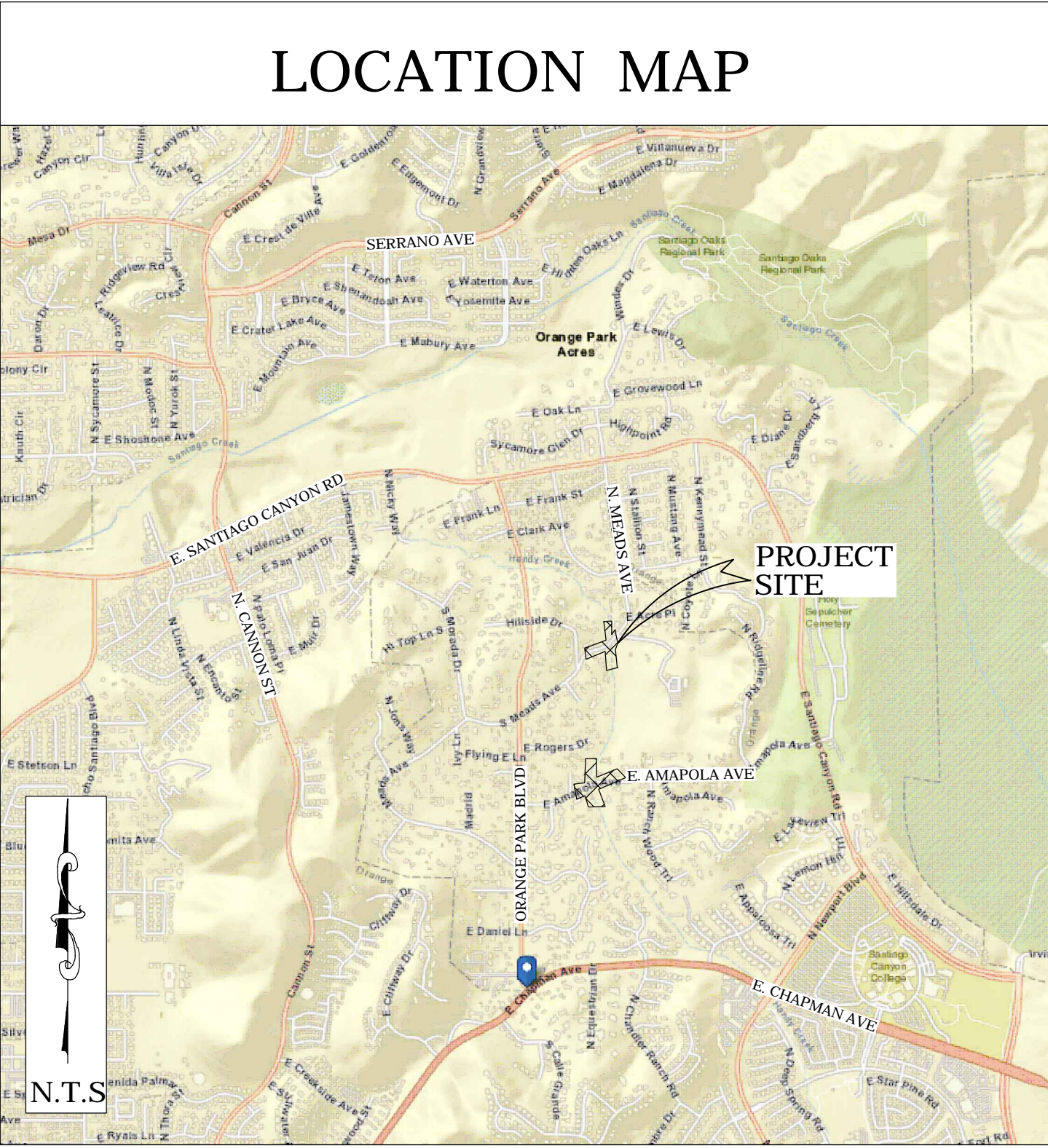




OC PUBLIC WORKS DEPARTMENT
JAMES TREADAWAY, DIRECTOR OF PUBLIC WORKS
KEVIN HILLS, COUNTY SURVEYOR



MEADS AVE. AND AMAPOLA AVE. OVER HANDY CREEK (E08S06)
HYDRAULIC STUDY



BASIS OF BEARINGS

THE BASIS OF BEARINGS FOR THIS SURVEY IS BASED ON THE CALIFORNIA COORDINATE SYSTEM (CCS83), ZONE VI, NAD 83, OCS (2017.50) EPOCH ADJUSTMENT, AS DETERMINED LOCALLY BY A LINE BETWEEN CONTINUOUS GLOBAL POSITIONING STATIONS CGPS STATIONS SACY AND OEOC BEING NORTH 80°43'39.27" EAST AS DERIVED FROM THE COORDINATES PUBLISHED BY THE CALIFORNIA SPATIAL REFERENCE CENTER (CSRC) ALONG WITH DATA SHEETS ON FILE IN THE OFFICE OF THE ORANGE COUNTY SURVEYOR.

HORIZONTAL DATUM

COORDINATES SHOWN ARE BASED ON THE CALIFORNIA COORDINATE SYSTEM (CCS83), ZONE VI, NAD 83, OCS (2017.50) EPOCH ADJUSTMENT.

ALL DISTANCES SHOWN ARE GRID, UNLESS OTHERWISE NOTED. TO OBTAIN GROUND DISTANCES MULTIPLY GRID BY A COMBINED FACTOR OF 1.00003000.

THIS COMBINATION FACTOR WAS HELD AT: CP# 504
N: 2239070.18 E: 609705.31 EL: 474.01'

ALL DISTANCES ARE BASED ON THE U.S. SURVEY FOOT.

VERTICAL DATUM

O.C.S. BM. 3L-50-92 ELEV. = 620.569' YEAR LEVELED: 1992

NAVD 1988 (O.C.S. 1995 ADJUSTMENT)

DESCRIPTION: DESCRIBED BY OCS 2002 - FOUND 3 3/4" OCS ALUMINUM BENCHMARK DISK STAMPED "3L-50-92", SET IN THE EASTERLY CORNER OF A 2 FT. BY 2 FT. CONCRETE PAD WITH A 2 FT. HIGH VENT PIPE. MONUMENT IS LOCATED IN THE SOUTHEAST CORNER OF THE INTERSECTION OF SANTIAGO CANYON ROAD AND AMAPOLA AVENUE, 75 FT. SOUTHERLY OF THE CENTERLINE OF AMAPOLA AVENUE AND 45 FT. EASTERLY OF THE CENTERLINE OF SANTIAGO CANYON ROAD. MONUMENT IS SET 1.0 FT. HIGHER THAN THE ROAD.

NOTES

THE SURVEY INFORMATION SHOWN HEREON IS TO BE USED FOR TOPOGRAPHIC RELATIONSHIPS ONLY AND IS NOT INTENDED FOR LAND ACQUISITION OR BOUNDARY PURPOSES.

CONTOURS SHOWN OUTSIDE THE SURVEY LIMITS WERE GENERATED BY COUNTY OF ORANGE BASED ON THE UNITED STATES GEOLOGICAL SURVEY (USGS) LIDAR DATA SETS.

SHEET INDEX

SHEET NO.	DESCRIPTION
SHEET 1	TITLE SHEET
SHEETS 2-7	BOUNDARY SHEETS
SHEETS 8-9	TOPOGRAPHIC MAP

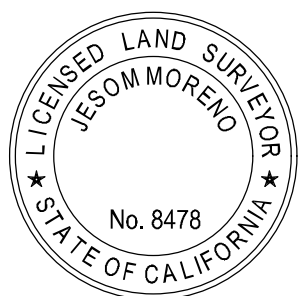
PURPOSE OF SURVEY

THE PURPOSE OF THE SURVEY IS TO PROVIDE A TOPOGRAPHIC FOR THIS PORTION OF HANDY CREEK (E08S06).

SENIOR LAND SURVEYOR'S CERTIFICATE:

THIS MAP CORRECTLY REPRESENTS A SURVEY MADE BY ME OR UNDER MY DIRECTION IN CONFORMANCE WITH REQUIREMENTS OF THE PROFESSIONAL LAND SURVEYORS' ACT, THIS 8 DAY OF NOVEMBER, 2023.

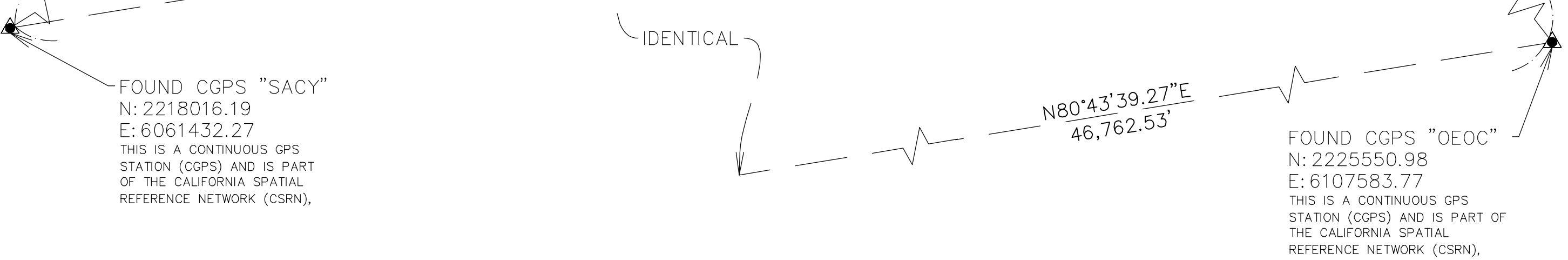
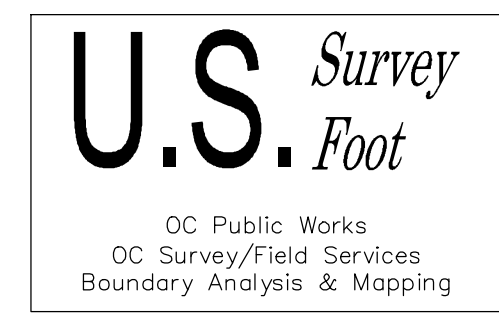
Jesom Moreno
JESOM MORENO, PLS. SENIOR LAND SURVEYOR



SENIOR LAND SURVEYOR'S CERTIFICATE:

THIS MAP HAS BEEN EXAMINED IN ACCORDANCE WITH THE PROFESSIONAL LAND SURVEYORS' ACT, THIS 8 DAY OF NOVEMBER, 2023.

Elliott Medina
ELLIOTT MEDINA, PLS. SENIOR LAND SURVEYOR



TOPOGRAPHIC MAPPING PROJECT

			COUNTY OF ORANGE OC PUBLIC WORKS OC SURVEY/FIELD SERVICES/BOUNDARY ANALYSIS & MAPPING			
MEADS AVE. AND AMAPOLA AVE. OVER HANDY CREEK HYDRAULIC STUDY OF HANDY CREEK						
TITLE SHEET						
PROJECT LIMITS: HANDY CREEK FROM NEWPORT BLVD & CHAPMAN AVE INTERSECTION						
TO DOUBLE REINFORCED CONCRETE BOX AT NICKY WAY						
		DATE OF SURVEY: 08/01/2023		BY: J. JOHNS & CREW		SHEET NO. 1 of 9
		MAPPING		BY: S. ROBATI/R. CASANAVE		
		OFFICE CHECK		BY: E. MEDINA, PLS		
MARK	DATE	ITEM		FIELD CHECK		
REVISIONS				SCALE: N.T.S.	W.O. #E03852	FILE # 2223PW-PR0002
FILE: HANDY CREEK_TOPO_2023.DWG						

CURVE TABLE						
CURVE #	DELTA	RADIUS	LENGTH	RECORD DELTA	RECORD RADIUS	RECORD LENGTH
C1	26°24'07"	399.99'	184.32'	(26° 24' 07" R23)	(400.00' R23)	(184.32' R23)
C2	26°25'28"	399.99'	184.47'	(26° 25' 28" R23)	(400.00' R23)	(184.48' R23)
C3	26°14'14"	399.99'	183.17'	(26° 14' 37" R1)	(400.00' R1)	(183.21' R1)
C4	48°30'00"	199.99'	169.29'	(48° 30' 00" R20)	(200.00' R20)	(169.30' R20)
C5	38°00'02"	499.98'	331.61'	(38° 00' 00" R20)	(500.00' R20)	(331.61' R20)
C6	59°00'20"	150.00'	154.48'	(59° 00' 20" R11)	(150.00' R20)	(154.48' R11)
C7	35°54'00"	199.99'	125.31'	(35° 54' 00" R20)	(200.00' R20)	(125.32' R20)
C8	48°13'21"	299.99'	252.48'	(48° 13' 01" R3)	(300.00' R3)	(252.46' R3)
C9	2°14'21"	524.98'	20.52'	(2° 14' 21" R11)	(525.00' R11)	(20.52' R11)
C10	10°11'32"	179.99'	32.02'	(10° 11' 32" R90)	(180.00' R90)	(32.02' R90)
C11	7°46'18"	279.99'	37.98'	(7° 46' 18" R34)	(280.00' R34)	(37.98' R34)
C12	57°00'00"	399.99'	397.93'	(57° 00' 00" R20)	(400.00' R20)	(397.94' R20)
C13	14°28'16"	399.99'	101.02'	(14° 27' 15" R19)	(400.00' R19)	(100.91' R19)

LINE TABLE			
LINE #	BEARING	MEASURED DISTANCE	RECORD DISTANCE
L1	N14°03'58"E	139.51'	139.51' (R10)
L2	N25°30'38"E	89.03'	89.07' (R10)
L3	N25°30'38"E	116.64'	116.64' (R10)
L4	N14°03'58"E	213.25'	213.26' (R30)
L5	N25°30'38"E	124.66'	124.65' (R40)
L6	N36°57'18"E	175.09'	175.10' (R40)
L7	N29°29'34"E	127.83'	127.83' (R40)
L8	N36°57'18"E	171.09'	171.10' (R10)
L9	N22°34'58"E	110.00'	110.00' (R40)
L10	N89°45'41"W	35.75'	37.75' (R10)
L11	N89°45'41"W	77.70'	77.68' (R10)
L12	N89°47'52"W	234.07'	234.03' (R10)
L13	N00°18'00"E	361.06'	361.08' (R10)
L14	N89°45'41"W	189.46'	189.52' (R10)
L15	N63°53'58"E	52.34'	52.35' (R10)
L16	N89°40'34"W	100.59'	100.70' (R10)
L17	N89°40'34"W	120.47'	120.60' (R10)
L18	N89°40'34"W	102.91'	102.89' (R1)
L19	N14°03'58"E	175.48'	175.49' (R10)
L20	N64°05'12"E	146.24'	146.22' (R1)
L21	N17°21'58"E	152.66'	153.00' (R40)
L22	N89°42'04"W	36.34'	36.62' (R40)
L23	N00°15'56"E	33.48'	33.48' (R20)
L25	N16°27'09"W	30.43'	30.43' (R10)
L26	N16°38'39"E	2.97'	2.97' (R20)
L27	N39°44'59"E	150.73'	150.81' (R20)

LINE TABLE			
LINE #	BEARING	MEASURED DISTANCE	RECORD DISTANCE
L28	N39°44'59"E	125.90'	125.83' (R20)
L29	N09°43'36"E	39.97'	39.97' (R30)
L30	N87°04'12"E	73.13'	73.20' (R41)
L31	N54°35'22"E	20.00'	20.00' (R11)
L32	N08°27'04"W	30.00'	30.00' (R34)
L33	N20°49'01"W	49.41'	49.41' (R20)
L34	N02°21'21"W	64.38'	64.38' (R90)
L35	N81°31'39"E	44.06'	44.06' (R34)
L36	N81°31'39"E	20.00'	20.00' (R34)
L37	N39°57'32"E	30.00'	30.00' (R20)
L38	N49°58'21"W	49.91'	49.91' (R20)
L39	N62°35'33"W	36.94'	36.94' (R90)
L40	N02°21'21"W	132.23'	132.24' (R90)
L41	N54°38'39"E	45.02'	45.02' (R20)
L42	N75°38'59"E	68.48'	68.48' (R31)
L43	N32°54'22"W	35.14'	35.16' (R31)
L44	N50°15'01"W	20.00'	20.00' (R20)
L45	N13°24'54"E	106.62'	106.62' (R31)
L46	N13°24'54"E	309.01'	308.87' (R31)
L47	N35°24'38"W	150.86'	150.86' (R11)
L48	N63°53'58"E	16.83'	16.83' (R10)
L49	N26°06'02"W	30.00'	30.00' (R20)
L50	N14°08'50"W	29.92'	30.00' (R19)
L51	N00°19'26"E	29.96'	30.00' (R19)
L52	N32°54'22"W	150.67'	150.66' (R31)

REFERENCES

- (R1) = TOPOGRAPHIC MAP 012PW--OPSS4004
(R2) = TOPOGRAPHIC MAP E08S06 012PW--OPSS4005
(R3) = TOPOGRAPHIC MAP TR95_6--5S
(R10) = PARCEL MAP, P.M.B. 26/43
(R11) = PARCEL MAP, P.M.B. 80/35
(R12) = PARCEL MAP, P.M.B. 18/40
(R13) = PARCEL MAP, P.M.B. 54/49
(R14) = PARCEL MAP NO. 79--147, P.M.B. 162/12
(R15) = PARCEL MAP, P.M.B. 47/10
(R16) = PARCEL MAP, P.M.B. 33/38
(R17) = PARCEL MAP, P.M.B. 31/30
(R18) = PARCEL MAP NO. 88--126, P.M.B. 240/17--18
(R19) = PARCEL MAP, P.M.B. 111/17
(R20) = TRACT NO. 918, M.M. 28/41--43
(R21) = TRACT NO. 8972, M.M. 365/16--18
(R22) = TRACT NO. 7238, M.M. 340/37--38
(R23) = TRACT NO. 9687, M.M. 429/1--2
(R30) = RECORD OF SURVEY RSB 165/25--30
(R31) = RECORD OF SURVEY RSB 36/8
(R32) = RECORD OF SURVEY RSB 32/41
(R33) = RECORD OF SURVEY RSB 25/1
(R34) = RECORD OF SURVEY RSB 81/40
(R35) = RECORD OF SURVEY RSB 34/25
(R36) = RECORD OF SURVEY RSB 42/4
(R37) = RECORD OF SURVEY RSB 60/34
(R40) = RECORD PER BOOK 9372, PAGE 337 O.R.
(R41) = RECORD PER BOOK 10569, PAGE 487 O.R.
(R42) = RECORD PER BOOK 11578, PAGE 728 O.R.
(R43) = RECORD PER BOOK 11578, PAGE 731 O.R.
(R44) = RECORD PER BOOK 10806, PAGE 955 O.R.
(R45) = RECORD PER BOOK 10022, PAGE 326 O.R.
(R46) = RECORD PER BOOK 6386, PAGE 798 O.R.
(R47) = RECORD PER BOOK 5891, PAGE 590 O.R.
(R48) = RECORD PER BOOK 9368, PAGE 970 O.R.
(R49) = RECORD PER BOOK 6897, PAGE 980 O.R.
(R60) = C.S.T.B. 115/63--66
(R70) = CORNER RECORD, C.R. 2020--0261
(R71) = CORNER RECORD, C.R. 2020--0260
(R72) = CORNER RECORD, C.R. 2020--0259
(R73) = CORNER RECORD, C.R. 2020--0258
(R74) = CORNER RECORD, C.R. 2020--0267
(R75) = CORNER RECORD, C.R. 2020--0268
(R76) = CORNER RECORD, C.R. 2022--3009
(R90) = LOT LINE ADJUSTMENT 199000028256

MONUMENT NOTES

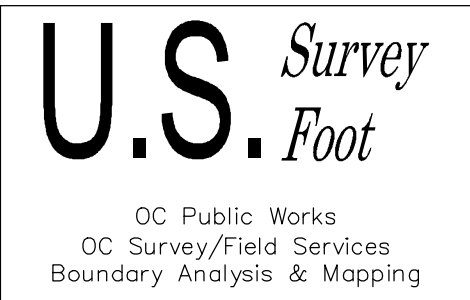
- [1] FOUND BOAT SPIKE AND 1--1/2 INCH STAINLESS STEEL WASHER STAMPED "ORANGE COUNTY SURVEYOR" PER (R73), FLUSH WITH ASPHALT. ACCEPTED AS THE INTERSECTION OF ORANGE PARK ACRES AND AMAPOLA AVENUE.
- [2] FOUND CUT SPIKE WITH 1--1/2 INCH BRASS WASHER STAMPED "ORANGE COUNTY SURVEYOR PER (R30)". DOWN 0.20 FEET BELOW ASPHALT. NO REFERENCE. ACCEPTED AS THE INTERSECTION OF ORANGE PARK ACRES AND MEADS AVENUE.
- [3] FOUND BOAT SPIKE AND 1--1/2 INCH STAINLESS STEEL WASHER STAMPED "ORANGE COUNTY SURVEYOR" PER (R71). FLUSH WITH ASPHALT. ACCEPTED AS A POINT ON THE CENTERLINE OF AMAPOLA AVENUE.
- [4] FOUND ONE INCH IRON PIPE WITH SCREW AND 3/4 BRASS TAG STAMPED "LS 5968" FLUSH WITH DIRT. NO REFERENCE. N00°19'26"W 0.04 FEET FROM SOUTHERLY RIGHT OF WAY OF AMAPOLA AVENUE AND APPARENT ANGLE POINT ALONG NE'LY LINE OF PARCEL 1 PER (R19).
- [5] FOUND BOAT SPIKE AND 1--1/2 INCH STAINLESS STEEL WASHER STAMPED "ORANGE COUNTY SURVEYOR" PER (R71), FLUSH WITH ASPHALT. ACCEPTED AS A POINT ALONG THE CENTERLINE TANGENT OF AMAPOLA AVENUE. N89°40'34"W 0.11 FEET FROM THE ESTABLISHED CENTERLINE EC.
- [6] FOUND TWO INCH IRON PIPE WITH TACK AND NO TAG DOWN 0.75 FEET IN DIRT. N14°08'50"W 0.08 FEET FROM THE APPARENT ANGLE POINT ALONG NW'LY LINE OF PARCEL 1 PER (R19)
- [7] FOUND BOAT SPIKE AND 1--1/2 INCH STAINLESS STEEL WASHER STAMPED "ORANGE COUNTY SURVEYOR" PER (R72), FLUSH WITH ASPHALT. S89°45'04"W 0.25 FEET FROM W'LY LINE OF PARCEL 4 PER (R15).
- [8] FOUND ONE INCH IRON PIPE WITH TACK AND ILLEGIBLE TAG DOWN 1.10 FEET IN DIRT. N26°06'02"W 0.56 FEET FROM SOUTHERLY RIGHT OF WAY OF AMAPOLA AVENUE AND APPARENT NW'LY CORNER OF PARCEL 2 PER (R18).
- [9] FOUND BOAT SPIKE AND 1--1/2 INCH STAINLESS STEEL WASHER STAMPED "ORANGE COUNTY SURVEYOR" PER (R72), FLUSH WITH ASPHALT. ACCEPTED AS A POINT ALONG THE CENTERLINE TANGENT OF AMAPOLA AVENUE. S63°53'58"W 0.07 FEET (0.07' R30) FROM THE CENTERLINE EC.
- [10] FOUND BOAT SPIKE AND 1--1/2 INCH STAINLESS STEEL WASHER STAMPED "ORANGE COUNTY SURVEYOR" PER (R73), FLUSH WITH ASPHALT. N53°27'00"E 0.17 FEET FROM THE CENTERLINE BC OF AMAPOLA AVENUE.
- [11] FOUND BOAT SPIKE AND 1--1/2 INCH STAINLESS STEEL WASHER STAMPED "ORANGE COUNTY SURVEYOR" PER (R70), FLUSH WITH ASPHALT. ACCEPTED AS A POINT ON THE CENTERLINE OF AMAPOLA AVENUE.
- [12] FOUND BOAT SPIKE AND 1--1/2 INCH STAINLESS STEEL WASHER STAMPED "ORANGE COUNTY SURVEYOR" FLUSH WITH THE SURFACE OF ASPHALT PER (R70). ACCEPTED AS A POINT ALONG THE CENTERLINE OF AMAPOLA AVENUE. N64°05'12"E 0.04 FEET FROM THE CENTERLINE EC.
- [13] FOUND TWO INCH IRON PIPE WITH TACK AND TAG STAMPED "LS 3579" PER (R13) UP 0.20 FEET IN THE SURFACE OF DIRT. ACCEPTED AS THE NORTHEAST CORNER OF LOT 99 PER (R20).
- [14] FOUND BOAT SPIKE AND 1--1/2 INCH STAINLESS STEEL WASHER STAMPED "LS 3447" NO REFERENCE. ACCEPTED AS A POINT ALONG THE W'LY LINE OF LOT 99 PER (R20) AND SOUTHWEST CORNER OF PARCEL 4 PER (R16). FLUSH WITH ASPHALT.
- [15] FOUND BOAT SPIKE AND 1--1/2 INCH STAINLESS STEEL WASHER STAMPED "ORANGE COUNTY SURVEYOR" PER (R74), FLUSH ASPHALT. ACCEPTED THE CENTERLINE EC OF MEADS AVENUE.
- [16] FOUND BOAT SPIKE AND 1--1/2 INCH STAINLESS STEEL WASHER STAMPED "ORANGE COUNTY SURVEYOR" PER (R75). FLUSH WITH ASPHALT. ACCEPTED AS THE CENTERLINE BC OF MEADS AVENUE.
- [17] FOUND BOAT SPIKE WITH NO TAG, NO REFERENCE. FLUSH WITH ASPHALT. ACCEPTED AS THE MOST N'LY CORNER OF LOT 92 PER (R20).
- [18] FOUND BOAT SPIKE AND 1--1/2 INCH STAINLESS STEEL WASHER STAMPED "ORANGE COUNTY SURVEYOR" PER (R75). FLUSH WITH ASPHALT. ACCEPTED AS A POINT ON THE CENTERLINE TANGENT OF MEADS AVENUE. S08°28'21"W 0.06 FEET FROM THE ESTABLISHED CENTERLINE EC.
- [19] FOUND BOAT SPIKE AND 1--1/2 INCH STAINLESS STEEL WASHER STAMPED "ORANGE COUNTY SURVEYOR" PER (R76). FLUSH WITH ASPHALT. ACCEPTED AS THE INTERSECTION OF MEADS AVENUE AND RANDALL STREET.
- [20] FOUND ONE INCH IRON PIPE WITH TACK AND TAG STAMPED "RCE 10177" PER (R11). DOWN 0.30 FEET IN DIRT. ACCEPTED AS A POINT ALONG THE EASTERLY RIGHT OF WAY OF MEADS AVENUE AND NW'LY ANGLE POINT OF PARCEL 3 PER (R11).
- [21] FOUND ONE INCH IRON PIPE WITH TACK AND TAG STAMPED "RCE 10177" PER (R11). DOWN 0.40 FEET IN DIRT. N54°35'22"E 0.11 FEET FROM THE NW'LY LINE OF PARCEL 3 PER (R11).
- [22] FOUND 3/4 INCH IRON PIPE WITH OPEN. NO REFERENCE. DOWN 0.50 FEET IN DIRT. NOT ACCEPTED. N20°04'51"W 0.17 FEET FROM THE EASTERLY RIGHT OF WAY EC OF MEADS AVENUE.
- [23] FOUND RAILROAD SPIKE. NO REFERENCE. FLUSH WITH THE SURFACE OF ASPHALT. N87°49'44"E 0.46 FEET FROM THE CENTERLINE EC OF HILLSIDE DRIVE.

NOTES

ALL BOUNDARY LINES SHOWN IN DASHED ARE FOR GRAPHICAL REPRESENTATION ONLY.

RECORD DISTANCES SHOWN HEREON ARE AS THEY APPEAR ON THE DOCUMENT OF RECORD. DISTANCES MAY BE EITHER GRID OR GROUND, AS PER SAID RECORD.

REFERENCE DOCUMENTS IN THE REFERENCE LEGEND ARE LIVE HYPERLINKS TO SAID DOCUMENT.



			COUNTY OF ORANGE OC PUBLIC WORKS OC SURVEY/FIELD SERVICES/BOUNDARY ANALYSIS & MAPPING				
			MEADS AND AMAPOLA OVER HANDY CREEK HYDRAULIC STUDY OF HANDY CREEK				
			BOUNDARY MAP				
			PROJECT LIMITS: HANDY CREEK FROM NEWPORT BLVD & CHAPMAN AVE INTERSECTION TO DOUBLE REINFORCED CONCRETE BOX AT NICKY WAY				
MARK	DATE	ITEM	DATE OF SURVEY: 08/01/2023		BY: J. JOHNS & CREW		SHEET NO. 2 of 9
			MAPPING		BY: P. MAGUIRE		
			OFFICE CHECK		BY: E. MEDINA, PLS		
			FIELD CHECK		BY: J. JOHNS & CREW		
			SCALE: 1" = 60' W.O. #ER03852		FILE #2324PW-PR0002		
		REVISIONS		FILE: HANDY CREEK BOUNDARY MAP 2023.DWG			

ESTABLISHMENT NOTES

- Ⓐ ESTABLISHED THE CENTERLINE OF AMAPOLA AVENUE BY HOLDING A LINE BETWEEN MONUMENT NOTES 11 AND 12
- Ⓑ ESTABLISHED THE CENTERLINE OF AMAPOLA AVENUE BY HOLDING A LINE BETWEEN MONUMENT NOTES 3 AND 5
- Ⓒ ESTABLISHED THE CENTERLINE OF AMAPOLA AVENUE HOLDING A RECORD RADIUS OF 400.00' PER (R20) TANGENT TO LINE ESTABLISHMENTS Ⓐ AND Ⓑ
- Ⓓ ESTABLISHED THE CENTERLINE OF AMAPOLA AVENUE HOLDING A RECORD RADIUS OF 400.00'AND DELTA PER (R18) TANGENT TO LINE ESTABLISHMENTⒸ
- Ⓔ ESTABLISHED THE CENTERLINE OF AMAPOLA AVENUE BY HOLDING TANGENCY AND RECORD LENGTH OF 443.03 FEET PER (R30) SW'LY FROM ESTABLISHMENT NOTE Ⓓ
- Ⓕ ESTABLISHED THE CENTERLINE OF AMAPOLA AVENUE HOLDING A RECORD RADIUS OF 400.00' AND DELTA PER (R23) SW'LY AND W'LY FROM LINE ESTABLISHMENTⒺ
- Ⓖ ESTABLISHED THE CENTERLINE OF AMAPOLA AVENUE BY HOLDING A LINE TANGENT FROM ESTABLISHMENT NOTE Ⓕ TO MONUMENT NOTE 11
- Ⓗ ESTABLISHED THE E'LY PROPERTY LINE OF PARCEL 2 PER (R10) BY RECORD ANGLE AND DISTANCE 391.25 FEET N'LY AT MONUMENT NOTE 3 FROM ESTABLISHMENT NOTE Ⓔ
- Ⓘ ESTABLISHED THE SW'LY CORNER OF PARCEL 1 PER (R10) BY RECORD DISTANCE 16.83 FEET SW'LY ALONG RIGHT OF WAY FROM THE POINT OF CURVATURE.
- Ⓢ ESTABLISHED THE W'LY LINE OF PARCEL 1 PER (R10) BY HOLDING RECORD ANGLES, AND DISTANCES FROM ESTABLISHMENT NOTE Ⓘ
- Ⓚ ESTABLISHED THE N'LY LINE OF PARCEL MAP PER (R10) BY HOLDING A LINE BETWEEN THE N'LY TERMINUS OF ESTABLISHMENT NOTES Ⓙ AND Ⓚ
- Ⓛ ESTABLISHED THE W'LY LINE OF PARCEL 2 PER (R10) BY HOLDING A LINE BETWEEN ESTABLISHMENT NOTES Ⓔ AND Ⓑ
- Ⓜ ESTABLISHED THE W'LY LINES OF PARCEL 3 PER (R10) BY PARALLEL OFFSET OF ESTABLISHMENT NOTES Ⓙ AT RECORD DISTANCE OF 40.00' FEET.
- Ⓝ ESTABLISHED THE N'LY LINE OF PARCEL 3 PER (R10) BY HOLDING A LINE W'LY FROM ESTABLISHMENT NOTE Ⓔ PARALLEL WITH ESTABLISHMENT NOTE Ⓚ TO ESTABLISHMENT NOTE Ⓜ
- Ⓞ ESTABLISHED THE NW'LY CORNER OF LOT 100 OF (R20) BY HOLDING A RECORD DISTANCE OF 35.75 FEET PER (R10) FROM THE W'LY TERMINUS OF ESTABLISHMENT NOTE Ⓚ
- Ⓟ ESTABLISHED THE W'LY LINE OF LOT 99 DESCRIBED PER (R20) BY HOLDING A LINE BETWEEN ESTABLISHMENT NOTE Ⓞ AND MONUMENT NOTE 13
- Ⓡ ESTABLISHED THE W'LY LINE OF LOT 99 PER (R20) BY HOLDING A LINE PARALLEL WITH ESTABLISHMENT NOTE Ⓡ THROUGH MONUMENT NOTE 14
- Ⓡ ESTABLISHED THE CENTERLINE OF ORANGE PARK ACRES BY HOLDING A LINE BETWEEN MONUMENT NOTES 1 AND 2
- Ⓢ ESTABLISHED THE NW'LY CORNER OF LOT 99 PER (R20) BY HOLDING A RECORD DISTANCE OF 291.06 FEET PER (R16) N'LY FROM MONUMENT NOTE 14 ALONG ESTABLISHMENT NOTE Ⓞ
- Ⓣ ESTABLISHED THE N'LY LINE OF LOT 99 PER (R20) BY HOLDING A LINE BETWEEN ESTABLISHMENT NOTE Ⓢ AND MONUMENT NOTE 13
- Ⓤ ESTABLISHED MEADS AVENUE CENTERLINE PER (R20) BY HOLDING RECORD ANGLES, DISTANCES, AND CURVE INFORMATION PER (R3/ R11/ R20) BETWEEN MONUMENT NOTES 2 AND 13
- Ⓥ ESTABLISHED THE CENTERLINE BEARING OF MEADS AVENUE S'LY FROM MONUMENT NOTE 16 TO A POINT PERPENDICULAR AND 20.00 FEET PER (R20) DISTANT FROM MONUMENT NOTE 17
- Ⓦ ESTABLISHED THE CENTERLINE EC OF MEADS AVENUE HOLDING A RECORD DISTANCE OF 276.64 FEET PER (R20) SW'LY ALONG ESTABLISHMENT NOTE Ⓥ AND FROM MONUMENT NOTE 16
- Ⓨ ESTABLISHED MEADS AVENUE CENTERLINE PER (R20) BY HOLDING RECORD CURVE INFORMATION AND RECORD ANGLES PER (R20) SW'LY FROM ESTABLISHMENT NOTE Ⓦ TO MONUMENT NOTE 15
- Ⓩ ESTABLISHED THE CENTERLINE OF MEADS AVENUE BY HOLDING A LINE BETWEEN MONUMENT NOTES 18 AND 19

ESTABLISHMENT NOTES

- ⒶⒶ ESTABLISHED THE CENTERLINE OF MEADS AVENUE HOLDING RECORD RADIUS PER (R20) AND TANGENT TO ESTABLISHMENT NOTES Ⓥ AND Ⓩ
- ⒶⒷ ESTABLISHED EASTERLY LINE OF LOT 93 PER (R20) BY HOLDING RECORD ANGLES, AND DISTANCES PER (R30) N'LY FROM MONUMENT NOTE 13
- ⒶⒸ ESTABLISHED NE'LY LINE OF LOT 92 PER (R20) BY HOLDING RECORD ANGLE, AND DISTANCE PER (R30) S'LY FROM MONUMENT NOTE 17
- ⒶⒹ ESTABLISHED SE'LY LINE OF LOT 92 PER (R20) BY HOLDING A LINE BETWEEN THE S'LY TERMINUS OF ESTABLISHMENT NOTE ⒶⒸ AND ESTABLISHMENT NOTE ⒶⒷ
- ⒶⒺ ESTABLISHED NW'LY CORNER OF LOT 92 PER (R20) BY HOLDING RECORD CURVE INFORMATION PER (R11) SW'LY ALONG THE SE'LY RIGHT OF WAY OF MEADS AVENUE FROM MONUMENT NOTE 20
- ⒶⒻ ESTABLISHED SE'LY CORNER OF LOT 92 PER (R20) AT THE E'LY TERMINUS OF ESTABLISHMENT NOTE ⒶⒷ
- ⒶⒼ ESTABLISHED SW'LY CORNER OF LOT 92 PER (R20) BY DISTANCE-DISTANCE INTERSECTION FROM ESTABLISHMENT NOTES ⒶⒷ AND ⒶⒻ HOLDING RECORD DISTANCES PER (R13)
- ⒶⒽ ESTABLISHED SW'LY LINE OF PARCEL DESCRIBED PER (R49) BY DISTANCE-DISTANCE INTERSECTION FROM ESTABLISHMENT NOTES ⒶⓂ AND ⒶⒺ HOLDING RECORD DISTANCES PER (R31)
- ⒶⒾ ESTABLISHED THE NW'LY TIE LINE OF PARCEL DESCRIBED PER (R49) BY PROLONGATION OF ESTABLISHMENT NOTE Ⓥ AT RECORD DISTANCE 68.48 FEET PER (R31) FROM THE W'LY TERMINUS
- ⒶⓁ ESTABLISHED THE SE'LY LINE OF PARCEL DESCRIBED PER (R31) AT RECORD DISTANCE 106.62 SW'LY FROM THE NE'LY TERMINUS ESTABLISHMENT NOTE ⒶⒹ
- ⒶⓀ ESTABLISHED THE CENTERLINE OF RANDALL STREET PER (R20) BY HOLDING RECORD ANGLES, AND DISTANCES SW'LY AND NW'LY FROM MONUMENT NOTE 19
- ⒶⓁ ESTABLISHED THE INTERSECTION OF THE N'LY PROLONGATION OF THE W'LY LINE OF PARCEL 2 AND CENTERLINE OF RANDALL ST PER (R34) BY HOLDING A RECORD DISTANCE OF 230.68' PER (R34) W'LY FROM MONUMENT NOTE 19 ALONG ESTABLISHMENT NOTE ⒶⓀ
- ⒶⓂ ESTABLISHED THE SE'LY CORNER OF PARCEL 1 PER (R34) USING RECORD CURVE INFORMATION PER (R34) SW'LY FROM THE POINT OF CURVATURE ALONG THE E'LY RIGHT OF WAY OF MEADS AVENUE
- ⒶⓃ ESTABLISHED THE INTERSECTION OF THE E'LY PROLONGATION OF THE COMMON LINE BETWEEN PARCEL 1 AND PARCEL 2 WITH THE CENTERLINE OF MEADS AVE PER (R34) BY PRORATION USING RECORD DATA PER (R34)
- ⒶⒸ ESTABLISHED THE COMMON LINE BETWEEN PARCEL 1 AND PARCEL 2 PER (R34) BY HOLDING A LINE PARALLEL WITH ESTABLISHMENT NOTE ⒶⓃ AT ESTABLISHMENT NOTE ⒶⓃ
- ⒶⒺ ESTABLISHED THE S'LY LINE OF PARCEL 1 PER (R34) BY HOLDING A LINE PARALLEL WITH ESTABLISHMENT NOTE ⒶⓃ AT ESTABLISHMENT NOTE ⒶⓂ W'LY A RECORD DISTANCE OF 208.31' PER (R34)
- ⒶⒹ ESTABLISHED THE W'LY LINE OF PARCELS PER (R34) BY BEARING-BEARING INTERSECTION FROM ESTABLISHMENT NOTE ⒶⓁ HOLDING RECORD ANGLE INFORMATION PER (R34) WITH ESTABLISHMENT NOTE ⒶⒷ
- ⒶⒻ ESTABLISHED THE NORTHWEST CORNER OF LOT 87 PER (R20) BY W'LY PROLONGATION OF LINE ESTABLISHMENT ⒶⒻ A RECORD DISTANCE OF 44.06 FEET PER (R34)
- ⒶⓈ ESTABLISHED THE W'LY LINES OF LOT 84 PER (R20) BY HOLDING RECORD ANGLES, AND DISTANCES FROM ESTABLISHMENT NOTE ⒶⒻ TO ESTABLISHMENT NOTE ⒶⓈ
- ⒶⓉ ESTABLISHED INTERSECTION OF THE NE'LY PROLONGATION OF THE NW'LY LINE OF LOT 84 WITH THE CENTERLINE OF RANDALL ST BY HOLDING A RECORD DISTANCE OF 49.91 PER (R20) NW'LY FROM THE EC OF RANDALL STREET CENTERLINE ALONG ESTABLISHMENT NOTE ⒶⓈ
- ⒶⓁ ESTABLISHED THE CENTERLINE OF HILLSIDE DRIVE PER (R20) BY HOLDING RECORD ANGLES, AND DISTANCES N'LY FROM ESTABLISHMENT NOTE ⒶⓎ
- ⒶⓎ ESTABLISHED THE CENTERLINE BC OF HILLSIDE DR ALONG THE CENTERLINE OF MEADS AVE BY HOLDING A RECORD DISTANCE OF 45.02' PER (R20) SW'LY FROM THE CENTERLINE BC OF MEADS AVE ALONG ESTAB NOTE Ⓤ PER (R20)

ESTABLISHMENT NOTES

- ⒶⓂ ESTABLISHED THE NORTHWEST CORNER OF PARCEL 1 PER (R90) BY HOLDING RECORD DISTANCE 196.62 FEET N'LY PER (R34) ALONG THE E'LY RIGHT OF WAY OF HILLSIDE DRIVE
- ⒶⓃ ESTABLISHED THE NW'LY LINE OF PARCEL 1 PER (R90) HOLDING A LINE BETWEEN ESTABLISHMENT NOTES ⒶⒻ AND ⒶⓂ
- ⒶⓎ ESTABLISHED THE SE'LY CORNER OF PARCEL 2 PER (R90) USING RECORD CURVE INFORMATION PER (R90) NE'LY FROM BC ALONG N'LY RIGHT OF WAY OF MEADS AVENUE
- ⒶⓏ ESTABLISHED THE SE'LY LINE OF PARCEL 2 PER (R90) BY HOLDING RECORD ANGLE, AND DISTANCE NW'LY FROM ESTABLISHMENT NOTE ⒶⓈ
- ⒶⒺ ESTABLISHED THE E'LY LINE OF PARCELS DESCRIBED PER (R90) HOLDING A LINE BETWEEN ESTABLISHMENT NOTES ⒶⒻ AND N'LY TERMINUS OF ESTABLISHMENT NOTE ⒶⓈ
- ⒶⒷ ESTABLISHED THE COMMON LINE BETWEEN PARCEL 1 AND PARCEL 2 PER (R90) BY GRANT BOUNDARY ADJUSTMENT BETWEEN ESTABLISHMENT NOTES ⒶⒺ AND ⒶⒺ USING RECORD DATA PER (R90)
- ⒶⒸ ESTABLISHED THE SOUTHWEST CORNER OF PARCEL 1 PER (R90) BY HOLDING RECORD DISTANCE 64.38 FEET PER (R90) S'LY ALONG THE E'LY RIGHT OF WAY OF HILLSIDE DRIVE FROM ESTABLISHMENT NOTE ⒶⓎ
- ⒶⒽ ESTABLISHED THE SOUTHEAST CORNER OF PARCEL 1 PER (R90) BY HOLDING RECORD DISTANCE 226.41 FEET PER (R90) SW'LY ALONG ESTABLISHMENT NOTE ⒶⒺ FROM ESTABLISHMENT NOTE ⒶⒻ
- ⒶⒷ ESTABLISHED THE NE'LY CORNER OF PARCEL 3 PER (R10) BY PROPORTIONATE DISTANCE BETWEEN ESTABLISHMENT NOTES ⒶⒽ AND ⒶⒺ ALONG ESTABLISHMENT NOTE ⒶⓁ
- ⒶⒻ ESTABLISHED THE W'LY LINES OF PARCEL 1 AND 2 PER (R11) HOLDING A LINE SE'LY FROM MONUMENT NOTE 20 AND PARALLEL WITH LINE BETWEEN ESTABLISHMENTS ⒶⒻ AND ⒶⒸ
- ⒶⒷ ESTABLISHED THE END OF CURVE ALONG AMAPOLA AVENUE SE'LY FROM MONUMENT NOTE 5 0.11 FEET PER (R30) ALONG ESTABLISHMENT NOTE ⒶⒺ
- ⒶⒽ ESTABLISHED THE SW'LY CORNER OF PARCEL 2 PER (R10) BY PROPORTIONATE DISTANCE BETWEEN THE S'LY TERMINUS OF ESTABLISHMENT NOTE ⒶⒺ AND THE NORTHERLY BC OF RIGHT OF WAY ALONG ESTABLISHMENT NOTE ⒶⒺ
- ⒶⒺ ESTABLISHED THE NW'LY CORNER OF PARCEL 2 PER (R10) BY PROPORTIONATE DISTANCE BETWEEN THE N'LY TERMINUS OF ESTABLISHMENT NOTE ⒶⒺ AND THE NE'LY TERMINUS OF ESTABLISHMENT NOTE ⒶⒺ

BASIS OF BEARINGS

THE BASIS OF BEARINGS FOR THIS SURVEY IS BASED ON THE CALIFORNIA COORDINATE SYSTEM (CCS83), ZONE VI, NAD 83, OCS (2017.50) EPOCH ADJUSTMENT, AS DETERMINED LOCALLY BY A LINE BETWEEN CONTINUOUS GLOBAL POSITIONING STATIONS CGPS STATIONS (OEOC) AND (SACY) BEING NORTH 80°43'39" EAST AS DERIVED FROM THE COORDINATES PUBLISHED BY THE CALIFORNIA SPATIAL REFERENCE CENTER (CSRC) ALONG WITH DATA SHEETS ON FILE IN THE OFFICE OF THE ORANGE COUNTY SURVEYOR.

HORIZONTAL DATUM

COORDINATES SHOWN ARE BASED ON THE CALIFORNIA COORDINATE SYSTEM (CCS83), ZONE VI, NAD 83, OCS (2017.50) EPOCH ADJUSTMENT.

ALL DISTANCES SHOWN ARE GRID, UNLESS OTHERWISE NOTED. TO OBTAIN GROUND DISTANCE MULTIPLY A GRID DISTANCE BY 1.00002994.

COMBINATION FACTOR WAS HELD AT POINT NUMBER 502 N:2239976.813', E:6096142.797', ELEVATION= 484.79'

RECORD DISTANCES SHOWN HEREON ARE AS THEY APPEAR ON THE DOCUMENT OF RECORD. DISTANCES MAY BE EITHER GRID OR GROUND, AS PER SAID RECORD.

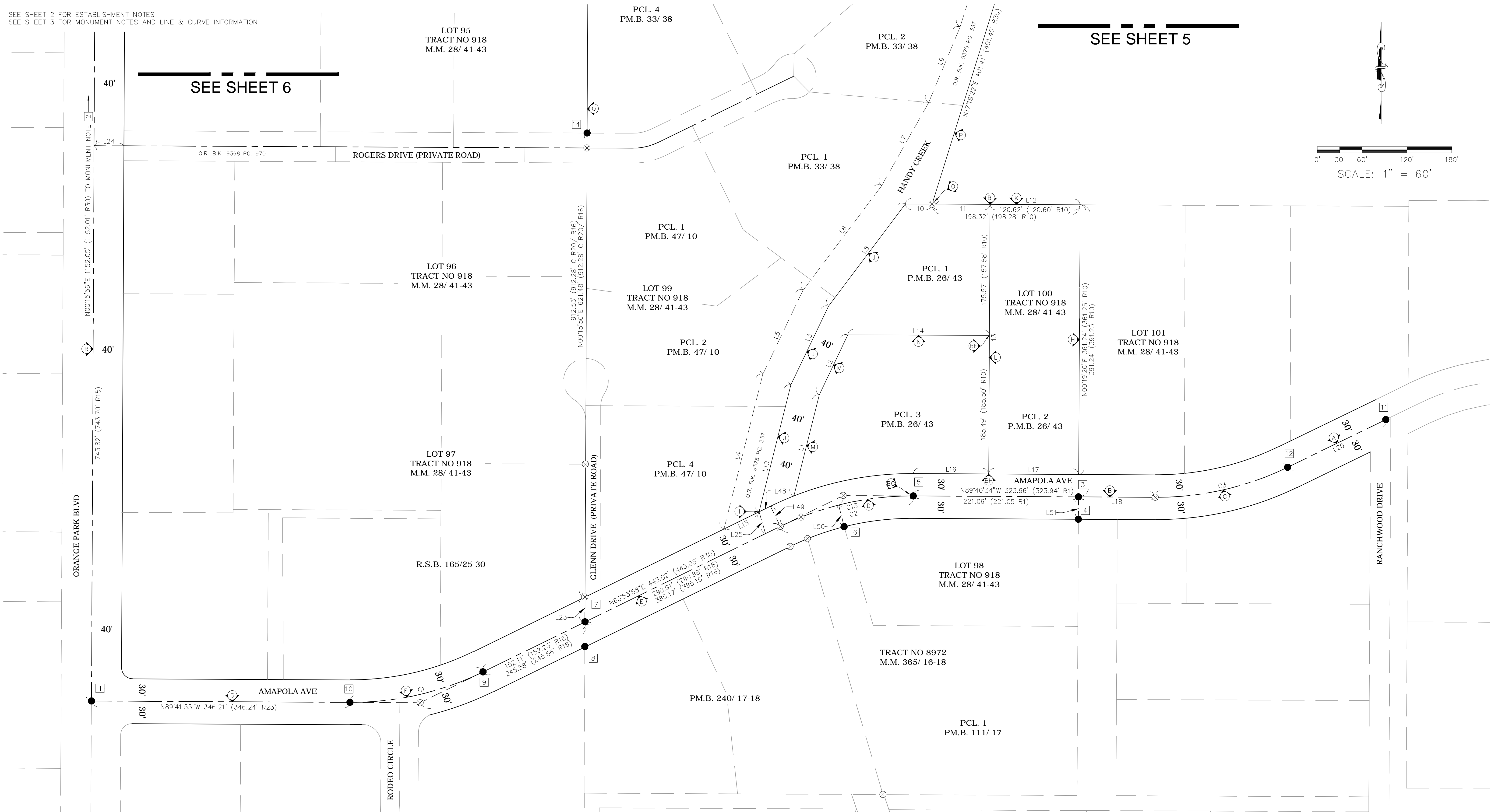
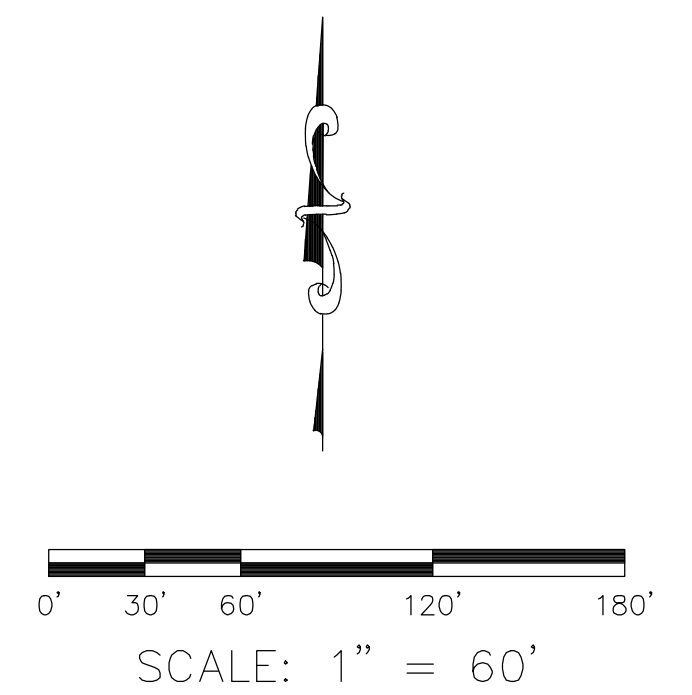
ALL DISTANCES ARE BASED ON THE U.S. SURVEY FOOT.

			COUNTY OF ORANGE OC PUBLIC WORKS OC SURVEY/FIELD SERVICES/BOUNDARY ANALYSIS & MAPPING				
			MEADS AND AMAPOLA OVER HANDY CREEK HYDRAULIC STUDY OF HANDY CREEK				
			BOUNDARY MAP				
			PROJECT LIMITS: HANDY CREEK FROM NEWPORT BLVD & CHAPMAN AVE INTERSECTION TO DOUBLE REINFORCED CONCRETE BOX AT NICKY WAY				
			DATE OF SURVEY: 08/01/2023		BY: J. JOHNS & CREW		SHEET NO. 3 of 9
			MAPPING		BY: P. MAGUIRE		
			OFFICE CHECK		BY: E. MEDINA, PLS		
FIELD CHECK		BY: J. JOHNS & CREW					
SCALE: 1" = 60'		W.O. #E03852					
MARK	DATE	ITEM	FILE # 2324PW-PR0002				
REVISIONS			FILE: HANDY CREEK BOUNDARY MAP 2023.DWG				

SEE SHEET 2 FOR ESTABLISHMENT NOTES
SEE SHEET 3 FOR MONUMENT NOTES AND LINE & CURVE INFORMATION

SEE SHEET 6

SEE SHEET 5



NOTES

ALL BOUNDARY LINES SHOWN IN DASHED ARE FOR GRAPHICAL REPRESENTATION ONLY.

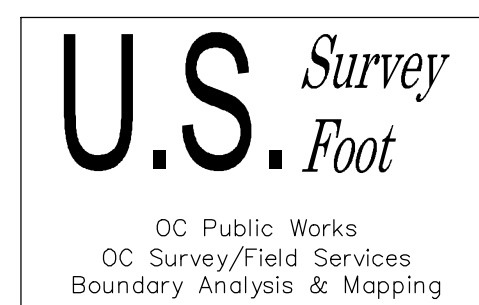
RECORD DISTANCES SHOWN HEREON ARE AS THEY APPEAR ON THE DOCUMENT OF RECORD. DISTANCES MAY BE EITHER GRID OR GROUND, AS PER SAID RECORD.

REFERENCE DOCUMENTS IN THE REFERENCE LEGEND ARE LIVE HYPERLINKS TO SAID DOCUMENT.

LEGEND

- FOUND MONUMENT AS NOTED
 ☑ MONUMENT ESTABLISHED BY TIES
 ⊗ S.F.N. - SEARCHED, FOUND NOTHING
 ⊛ S.F.N., ESTABLISHED BY TIES
 C CALC FROM RECORD MAP
 R RECORD MAP
 M MEASURED

			COUNTY OF ORANGE OC PUBLIC WORKS OC SURVEY/FIELD SERVICES/BOUNDARY ANALYSIS & MAPPING	
			MEADS AND AMAPOLA OVER HANDY CREEK HYDRAULIC STUDY OF HANDY CREEK	
			BOUNDARY MAP	
			PROJECT LIMITS: HANDY CREEK FROM NEWPORT BLVD & CHAPMAN AVE INTERSECTION	
			TO DOUBLE REINFORCED CONCRETE BOX AT NICKY WAY	
			DATE OF SURVEY: 08/01/2023	BY: J. JOHNS & CREW
			MAPPING	BY: P. MAGUIRE
			OFFICE CHECK	BY: E. MEDINA, PLS
			FIELD CHECK	BY: J. JOHNS & CREW
MARK	DATE	ITEM	SCALE: 1" = 60' W.O. #ER03852 FILE #2324PW-PROD002 SCALE: 1" = 60' W.O. #ER03852 FILE #2324PW-PROD002	
REVISIONS			SHEET NO. 4 of 9	



SEE SHEET 2 FOR ESTABLISHMENT NOTES
SEE SHEET 3 FOR MONUMENT NOTES AND LINE & CURVE INFORMATION

SEE SHEET 7

SEE SHEET 8

SEE SHEET 4

SEE SHEET 4

LEGEND

- FOUND MONUMENT AS NOTED
- MONUMENT ESTABLISHED BY TIES
- ⊗ S.F.N. - SEARCHED, FOUND NOTHING
- ⊠ S.F.N., ESTABLISHED BY TIES
- C CALC FROM RECORD MAP
- R RECORD MAP
- M MEASURED

U.S. Survey Foot

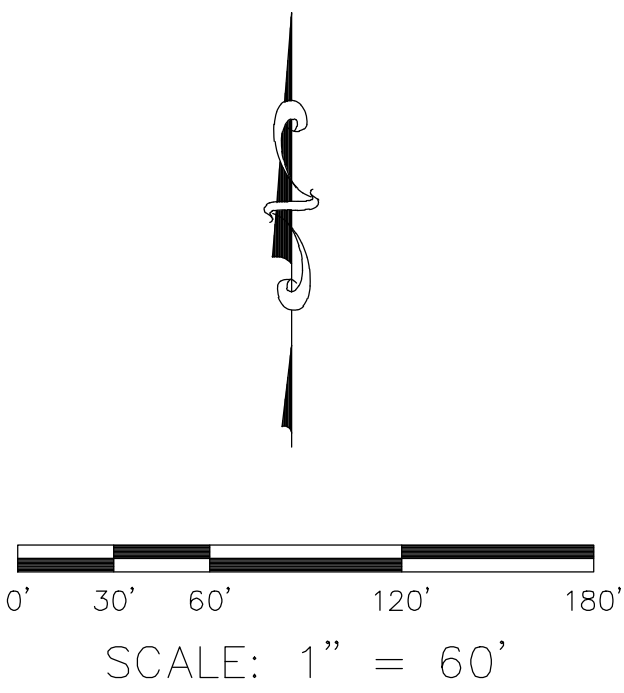
OC Public Works
OC Survey/Field Services
Boundary Analysis & Mapping

0' 30' 60' 120' 180'
SCALE: 1" = 60'

			COUNTY OF ORANGE OC PUBLIC WORKS OC SURVEY/FIELD SERVICES/BOUNDARY ANALYSIS & MAPPING				
			MEADS AND AMAPOLA OVER HANDY CREEK HYDRAULIC STUDY OF HANDY CREEK				
			BOUNDARY MAP				
			PROJECT LIMITS: HANDY CREEK FROM NEWPORT BLVD & CHAPMAN AVE INTERSECTION TO DOUBLE REINFORCED CONCRETE BOX AT NICKY WAY				
			DATE OF SURVEY: 08/01/2023		BY: J. JOHNS & CREW		SHEET NO. 5 of 9
			MAPPING		BY: P. MAGUIRE		
			OFFICE CHECK		BY: E. MEDINA, PLS		
			FIELD CHECK		BY: J. JOHNS & CREW		
			SCALE: 1" = 60'		W.O. #ER03852		
			FILE: #2324PW-PR0002				
FILE: HANDY CREEK BOUNDARY MAP 2023.DWG							
MARK	DATE	ITEM		REVISIONS			

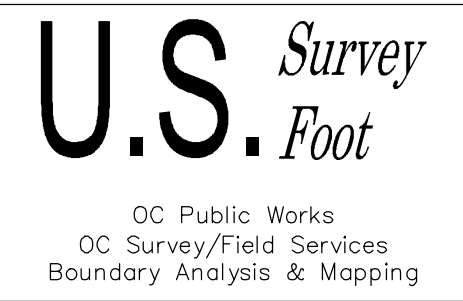
SEE SHEET 2 FOR ESTABLISHMENT NOTES
SEE SHEET 3 FOR MONUMENT NOTES AND LINE & CURVE INFORMATION

SEE SHEET 7



SEE SHEET 4

SEE SHEET 5



LEGEND

- FOUND MONUMENT AS NOTED
- MONUMENT ESTABLISHED BY TIES
- ⊗ S.F.N. - SEARCHED, FOUND NOTHING
- ⊠ S.F.N., ESTABLISHED BY TIES
- C CALC FROM RECORD MAP
- R RECORD MAP
- M MEASURED

NOTES

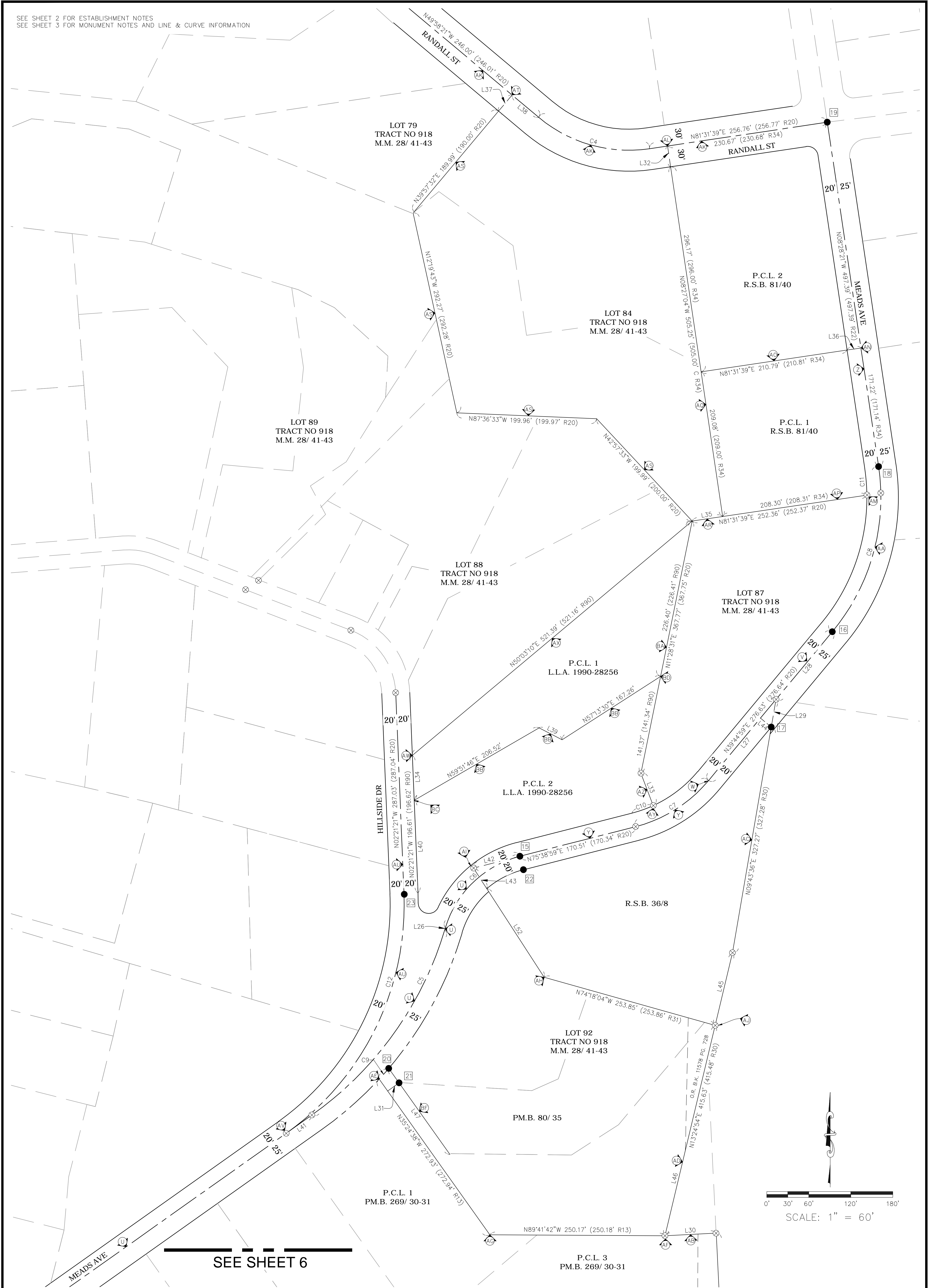
ALL BOUNDARY LINES SHOWN IN DASHED ARE FOR GRAPHICAL REPRESENTATION ONLY.

RECORD DISTANCES SHOWN HEREON ARE AS THEY APPEAR ON THE DOCUMENT OF RECORD. DISTANCES MAY BE EITHER GRID OR GROUND, AS PER SAID RECORD.

REFERENCE DOCUMENTS IN THE REFERENCE LEGEND ARE LIVE HYPERLINKS TO SAID DOCUMENT.

			COUNTY OF ORANGE OC PUBLIC WORKS OC SURVEY/FIELD SERVICES/BOUNDARY ANALYSIS & MAPPING			
			MEADS AND AMAPOLA OVER HANDY CREEK HYDRAULIC STUDY OF HANDY CREEK			
			BOUNDARY MAP			
			PROJECT LIMITS: HANDY CREEK FROM NEWPORT BLVD & CHAPMAN AVE INTERSECTION TO DOUBLE REINFORCED CONCRETE BOX AT NICKY WAY			
			DATE OF SURVEY: 08/01/2023		BY: J. JOHNS & CREW	
			MAPPING		BY: P. MAGUIRE	
			OFFICE CHECK		BY: E. MEDINA, PLS	
			FIELD CHECK		BY: J. JOHNS & CREW	
			SCALE: 1" = 60'		W.O. #E03852 FILE #2324PW-PR0002	
			FILE: HANDY CREEK BOUNDARY MAP 2023.DWG			
MARK	DATE	ITEM	REVISIONS			

SEE SHEET 2 FOR ESTABLISHMENT NOTES
SEE SHEET 3 FOR MONUMENT NOTES AND LINE & CURVE INFORMATION



U.S. Survey Foot
OC Public Works
OC Survey/Field Services
Boundary Analysis & Mapping

LEGEND

- FOUND MONUMENT AS NOTED
- MONUMENT ESTABLISHED BY TIES
- ⊗ S.F.N. – SEARCHED, FOUND NOTHING
- ⊗ S.F.N., ESTABLISHED BY TIES
- C CALC FROM RECORD MAP
- R RECORD MAP
- M MEASURED

NOTES

ALL BOUNDARY LINES SHOWN IN DASHED ARE FOR GRAPHICAL REPRESENTATION ONLY.
RECORD DISTANCES SHOWN HEREON ARE AS THEY APPEAR ON THE DOCUMENT OF RECORD. DISTANCES MAY BE EITHER GRID OR GROUND, AS PER SAID RECORD.
REFERENCE DOCUMENTS IN THE REFERENCE LEGEND ARE LIVE HYPERLINKS TO SAID DOCUMENT.

			COUNTY OF ORANGE OC PUBLIC WORKS OC SURVEY/FIELD SERVICES/BOUNDARY ANALYSIS & MAPPING				
			MEADS AND AMAPOLA OVER HANDY CREEK HYDRAULIC STUDY OF HANDY CREEK				
			BOUNDARY MAP				
			PROJECT LIMITS: HANDY CREEK FROM NEWPORT BLVD & CHAPMAN AVE INTERSECTION TO DOUBLE REINFORCED CONCRETE BOX AT NICKY WAY				
			DATE OF SURVEY: 08/01/2023		BY: J. JOHNS & CREW		SHEET NO. 7 of 9
			MAPPING		BY: P. MAGUIRE		
			OFFICE CHECK		BY: E. MEDINA, PLS		
			FIELD CHECK		BY: J. JOHNS & CREW		
			SCALE: 1" = 60'		W.O. #ER03852		FILE #2324PW-PR0002
			FILE: HANDY CREEK BOUNDARY MAP 2023.DWG				
MARK	DATE	ITEM					
REVISIONS							

LEGEND

SYMBOL

- Backflow Preventer Device
- Control Point
- Curb Drain/Weep Hole
- Gate, Double
- Gate, Roller
- Gate, Single
- Guy Wire Anchor
- Light Pole, Single
- Mailbox
- Manhole Sewer
- Meter Water
- Post
- Rock/Boulder
- Sign Post
- Tree
- Tree, Palm
- Utility Pole, Underground
- Valve Water

LINE PATTERN KEY

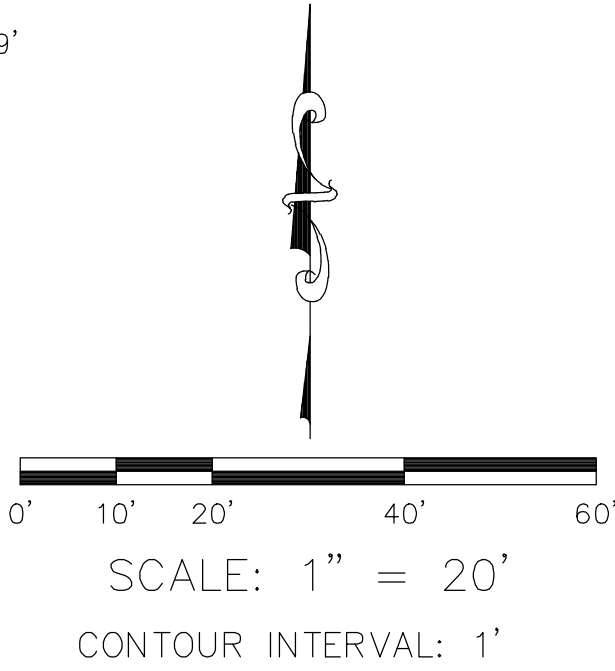
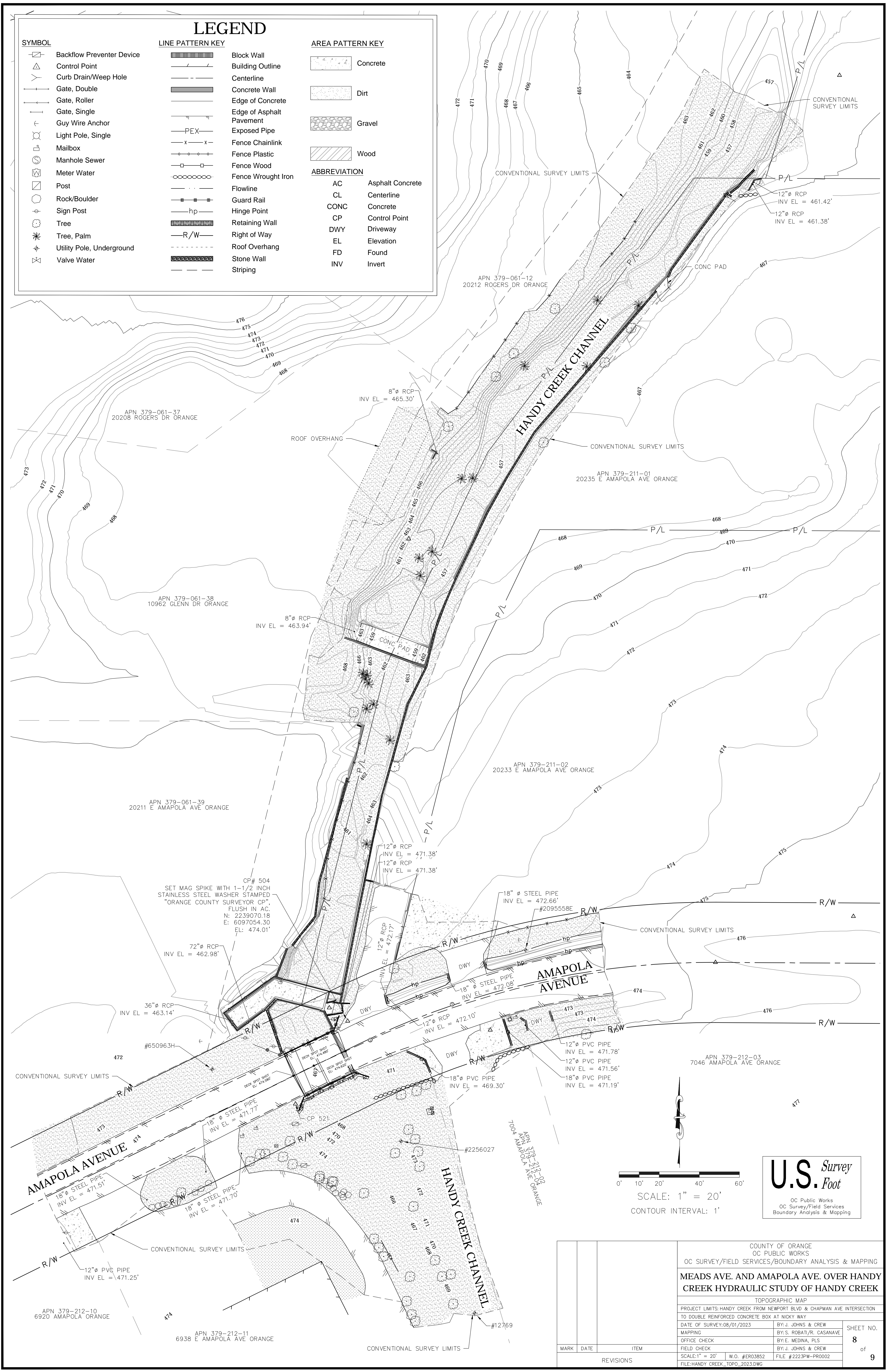
- Block Wall
- Building Outline
- Centerline
- Concrete Wall
- Edge of Concrete
- Edge of Asphalt Pavement
- Exposed Pipe
- Fence Chainlink
- Fence Plastic
- Fence Wood
- Fence Wrought Iron
- Flowline
- Guard Rail
- Hinge Point
- Retaining Wall
- Right of Way
- Roof Overhang
- Stone Wall
- Striping

AREA PATTERN KEY

- Concrete
- Dirt
- Gravel
- Wood

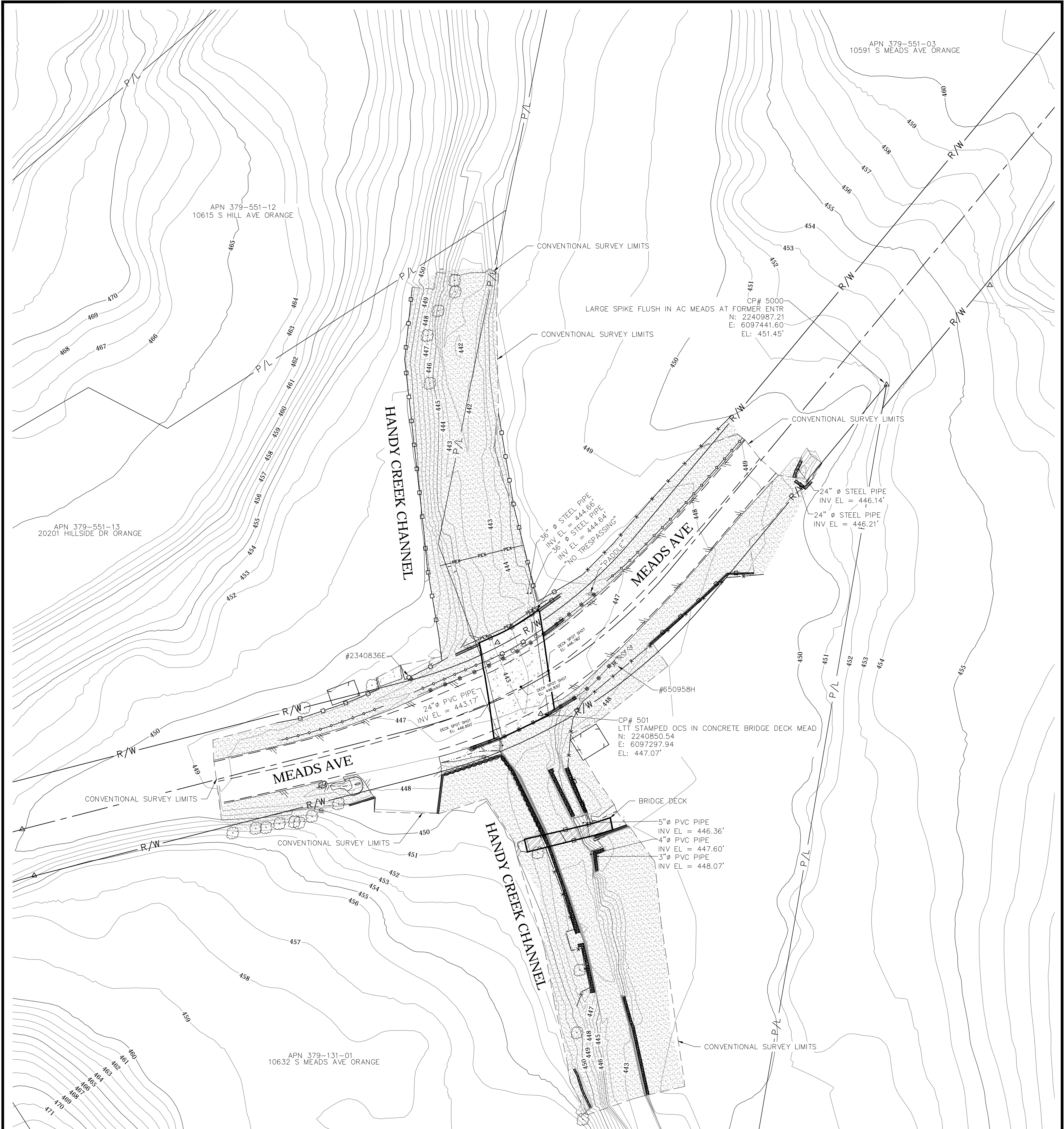
ABBREVIATION

- AC Asphalt Concrete
- CL Centerline
- CONC Concrete
- CP Control Point
- DWY Driveway
- EL Elevation
- FD Found
- INV Invert



U.S. Survey Foot
OC Public Works
OC Survey/Field Services
Boundary Analysis & Mapping

		COUNTY OF ORANGE OC PUBLIC WORKS OC SURVEY/FIELD SERVICES/BOUNDARY ANALYSIS & MAPPING			
		MEADS AVE. AND AMAPOLA AVE. OVER HANDY CREEK HYDRAULIC STUDY OF HANDY CREEK			
		TOPOGRAPHIC MAP			
		PROJECT LIMITS: HANDY CREEK FROM NEWPORT BLVD & CHAPMAN AVE INTERSECTION TO DOUBLE REINFORCED CONCRETE BOX AT NICKY WAY			
		DATE OF SURVEY: 08/01/2023			
MARK	DATE	ITEM	MAPPING	BY: J. JOHNS & CREW BY: S. ROBATI/R. CASANAVE	SHEET NO. 8 of 9
			OFFICE CHECK	BY: E. MEDINA, PLS	
			FIELD CHECK	BY: J. JOHNS & CREW	
			SCALE: 1" = 20' W.O. #ER03852	FILE # 2223PW-PR0002	
			FILE: HANDY CREEK_TOPO_2023.DWG		
REVISIONS					



SYMBOL

- Backflow Preventer Device
- Control Point
- Curb Drain/Weep Hole
- Gate, Double
- Gate, Roller
- Gate, Single
- Guy Wire Anchor
- Light Pole, Single
- Mailbox
- Manhole Sewer
- Meter Water
- Post
- Rock/Boulder
- Sign Post
- Tree
- Tree, Palm
- Utility Pole, Underground
- Valve Water

LINE PATTERN KEY

- Block Wall
- Building Outline
- Centerline
- Concrete Wall
- Edge of Concrete
- Edge of Asphalt Pavement
- Exposed Pipe
- Fence Chainlink
- Fence Plastic
- Fence Wood
- Fence Wrought Iron
- Flowline
- Guard Rail
- Hinge Point
- Retaining Wall
- Right of Way
- Roof Overhang
- Stone Wall
- Striping

AREA PATTERN KEY

- Concrete
- Dirt
- Gravel
- Wood

ABBREVIATION

- AC Asphalt Concrete
- CL Centerline
- CONC Concrete
- CP Control Point
- DWY Driveway
- EL Elevation
- FD Found
- INV Invert

U.S. Survey Foot
OC Public Works
OC Survey/Field Services
Boundary Analysis & Mapping



SCALE: 1" = 20'

CONTOUR INTERVAL: 1'

				COUNTY OF ORANGE OC PUBLIC WORKS OC SURVEY/FIELD SERVICES/BOUNDARY ANALYSIS & MAPPING		
				MEADS AVE. AND AMAPOLA AVE. OVER HANDY CREEK CREEK HYDRAULIC STUDY OF HANDY CREEK		
				TOPOGRAPHIC MAP		
				PROJECT LIMITS: HANDY CREEK FROM NEWPORT BLVD & CHAPMAN AVE INTERSECTION TO DOUBLE REINFORCED CONCRETE BOX AT NICKY WAY		
				DATE OF SURVEY: 08/01/2023	BY: J. JOHNS & CREW	SHEET NO. 9 of 9
				MAPPING	BY: S. ROBATI/R. CASANAVE	
				OFFICE CHECK	BY: E. MEDINA, PLS	
				FIELD CHECK	BY: J. JOHNS & CREW	
				SCALE: 1" = 20'	W.O. #ER03852	
				FILE: HANDY_CREEK_TOPO_2023.DWG		
MARK	DATE	ITEM				
REVISIONS						