

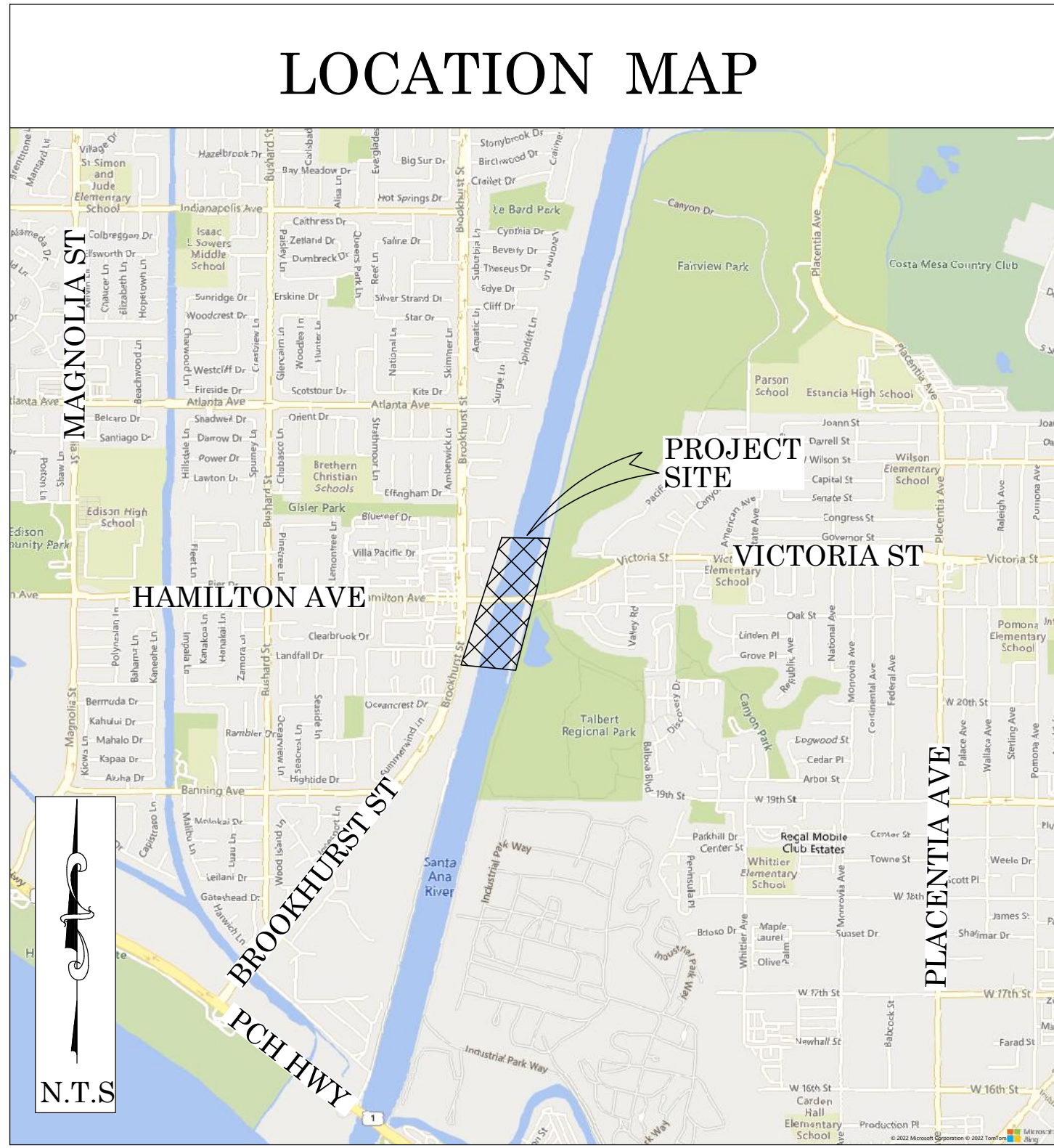


OC PUBLIC WORKS DEPARTMENT  
JAMES TREADAWAY, DIRECTOR OF PUBLIC WORKS  
KEVIN HILLS, COUNTY SURVEYOR

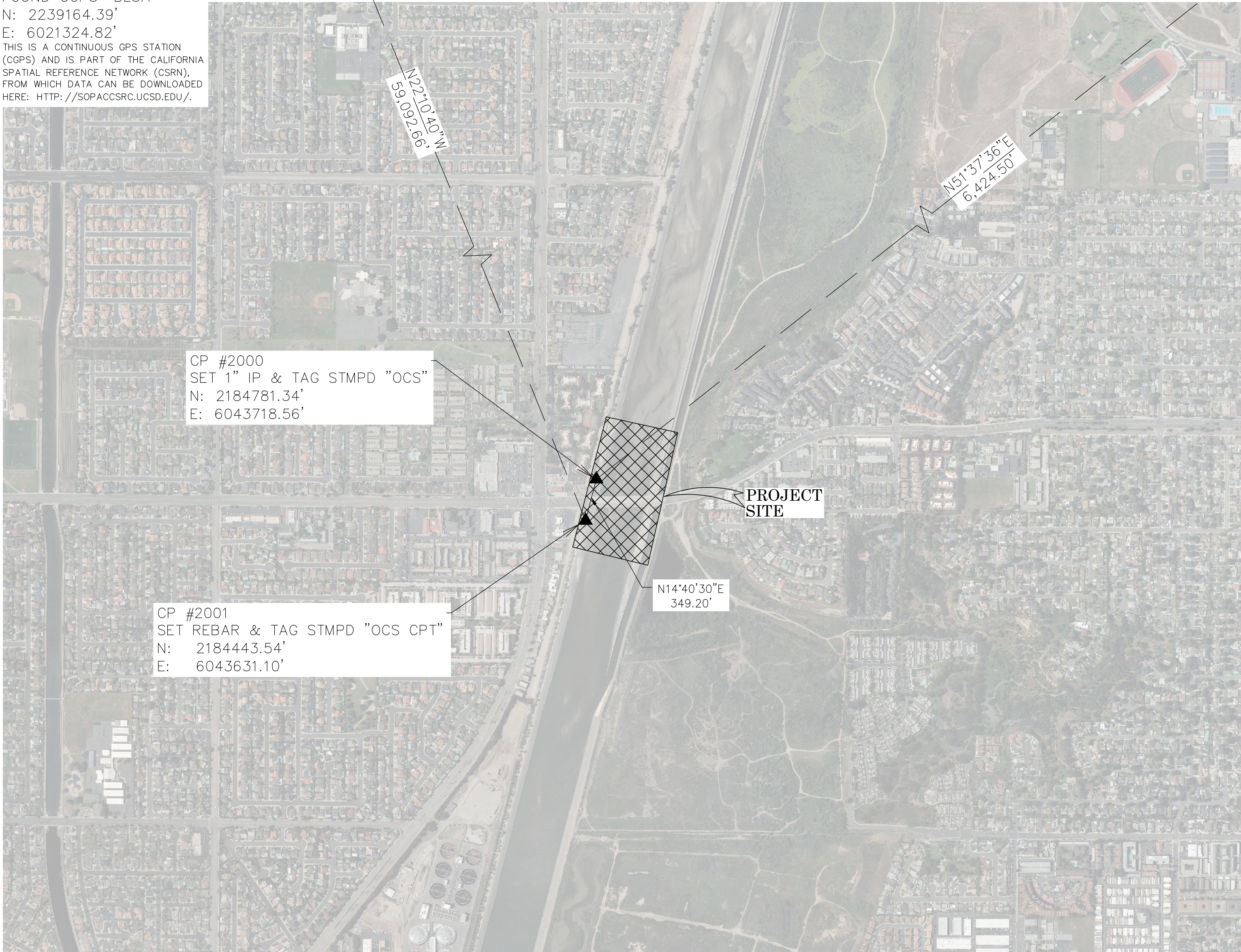


SANTA ANA RIVER (E01)

HAMILTON BRIDGE TOPO



FOUND CGPS "BLSA"  
N: 2239164.39'  
E: 6021324.82'  
THIS IS A CONTINUOUS GPS STATION (CGPS) AND IS PART OF THE CALIFORNIA SPATIAL REFERENCE NETWORK (CSRN), FROM WHICH DATA CAN BE DOWNLOADED HERE: [HTTP://SOPACCSRC.UCSD.EDU/](http://SOPACCSRC.UCSD.EDU/).



FOUND CGPS "FVPK"  
N: 2188769.57'  
E: 6048756.26'  
THIS IS A CONTINUOUS GPS STATION (CGPS) AND IS PART OF THE CALIFORNIA SPATIAL REFERENCE NETWORK (CSRN), FROM WHICH DATA CAN BE DOWNLOADED HERE: [HTTP://SOPACCSRC.UCSD.EDU/](http://SOPACCSRC.UCSD.EDU/).

BASIS OF BEARINGS

THE BASIS OF BEARINGS FOR THIS SURVEY IS BASED ON THE CALIFORNIA COORDINATE SYSTEM (CCS83), ZONE VI, NAD 83, OCS (2017.50) EPOCH ADJUSTMENT, AS DETERMINED LOCALLY BY A LINE BETWEEN CONTINUOUS GLOBAL POSITIONING STATIONS CGPS STATIONS (BLSA) AND (FVPK) BEING NORTH 28°33'39" WEST AS DERIVED FROM THE COORDINATES PUBLISHED BY THE CALIFORNIA SPATIAL REFERENCE CENTER (CSRN) ALONG WITH DATA SHEETS ON FILE IN THE OFFICE OF THE ORANGE COUNTY SURVEYOR.

HORIZONTAL DATUM

COORDINATES SHOWN ARE BASED ON THE CALIFORNIA COORDINATE SYSTEM (CCS83), ZONE VI, NAD 83, OCS (2017.50) EPOCH ADJUSTMENT.

ALL DISTANCES SHOWN ARE GRID, UNLESS OTHERWISE NOTED. TO OBTAIN GROUND DISTANCES MULTIPLY GRID BY A COMBINED FACTOR OF 1.00002616.

THIS COMBINATION FACTOR WAS HELD AT: CP# 2001  
N: 2184443.54' E: 6043631.10' EL: 21.93'

ALL DISTANCES ARE BASED ON THE U.S. SURVEY FOOT.

VERTICAL DATUM

O.C.S. BM. 1L-100-91 ELEV. = 8.110' YEAR LEVELED: 2005

NAVD 1988 (O.C.S. 1995 ADJUSTMENT)

DESCRIPTION: FOUND 3 3/4" OCS ALUMINUM BENCHMARK DISK STAMPED "1L-100-91", SET IN THE NORTHWEST CORNER OF A 12 FT. BY 4.5 FT. CONCRETE CATCH BASIN. MONUMENT IS LOCATED IN THE SOUTHWEST CORNER OF THE INTERSECTION OF HAMILTON AVENUE AND BROOKHURST STREET, 52 FT. SOUTHERLY OF THE CENTERLINE OF BROOKHURST STREET AND 104 FT. WESTERLY OF THE CENTERLINE OF HAMILTON AVENUE. MONUMENT IS SET LEVEL WITH THE SIDEWALK.

NOTES

THE SURVEY INFORMATION SHOWN HEREON IS TO BE USED FOR TOPOGRAPHIC RELATIONSHIPS ONLY AND IS NOT INTENDED FOR LAND ACQUISITION OR BOUNDARY PURPOSES.

SHEET INDEX

SHEET	NO.	DESCRIPTION
1	1	TITLE SHEET
2	2	TOPOGRAPHIC MAP

BASIS OF STATIONING

THE BASIS OF STATIONING FOR THIS PROJECT IS 6+50 (NOT SHOWN) HELD AT THE MOST SOUTH WESTERLY BEGINNING OF THE CENTERLINE CONSTRUCTION ALIGNMENT FOR THE SANTA ANA RIVER E01 PER RECORD DRAWING E01-101-29R AS SHOWN BY RS 98-1036 RSB 172/5-8 AND ESTABLISHED BY COORDINATES SHOWN ON THE COUNTY OF ORANGE LOWER SANTA ANA RIVER SAND MANAGEMENT PROJECT PLANS E01-701-13 DATED 5/26/2016. THIS ALIGNMENT SHOWN HEREON IS PRELIMINARY, FURTHER FIELD SURVEY WILL BE INITIATED IN ORDER TO CONSTRAIN SAID ALIGNMENT TO SURVEY MONUMENTATION.

PURPOSE OF SURVEY

THE PURPOSE OF THE SURVEY IS TO PROVIDE A TOPOGRAPHIC MAP FOR THIS PORTION OF THE SANTA ANA RIVER.

SENIOR LAND SURVEYOR'S CERTIFICATE:

THIS MAP CORRECTLY REPRESENTS A SURVEY MADE BY ME OR UNDER MY DIRECTION IN CONFORMANCE WITH REQUIREMENTS OF THE PROFESSIONAL LAND SURVEYOR'S ACT; THIS 27 DAY OF JANUARY, 2022.

MICHAEL KUBISTY, PLS. SENIOR LAND SURVEYOR



DEPUTY COUNTY SURVEYOR'S STATEMENT:

THIS MAP HAS BEEN EXAMINED IN ACCORDANCE WITH THE PROFESSIONAL LAND SURVEYOR'S ACT; THIS 27 DAY OF JANUARY, 2022.

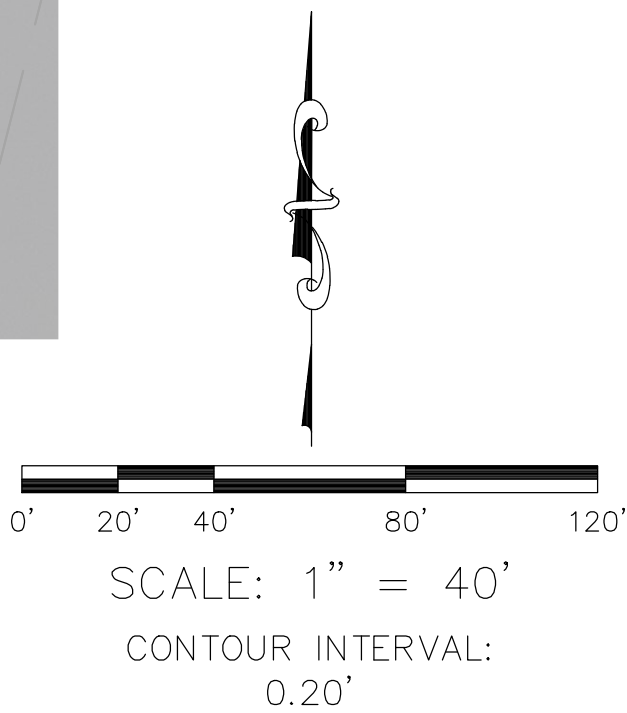
WADE WEAVER, PLS. DEPUTY COUNTY SURVEYOR



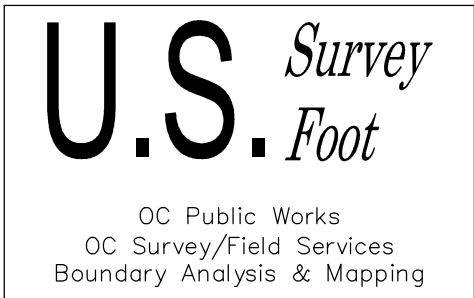
TOPOGRAPHIC MAPPING PROJECT

		COUNTY OF ORANGE OC PUBLIC WORKS OC SURVEY/FIELD SERVICES/BOUNDARY ANALYSIS & MAPPING			
		SANTA ANA RIVER (E01) HAMILTON BRIDGE TOPO			
		TITLE SHEET			
		PROJECT LIMITS: FROM APPROXIMATELY 360' S'LY AND 420' N'LY OF HAMILTON DR./ VICTORIA ST. ALONG THE SANTA ANA RIVER.			
		DATE OF SURVEY: 01/14/2022		BY: J. RUSSO & PARTY	
		MAPPING		BY: J. PEDRETTI	
		OFFICE CHECK		BY: M. LAFONTAINE, PLS	
		FIELD CHECK		BY: J. RUSSO & PARTY	
		SCALE: N.T.S.		W.O. #EQ20588	
		FILE: SANTA ANA HAMILTON BRIDGE TOPO 2022.DWG		FILE # 2122PW-PR0002	
MARK	DATE	ITEM	SHEET NO.  1  of  2		
REVISIONS					





LEGEND			
ABBREVIATION		SYMBOL	
BM	Benchmark	△	Control Point
CL	Centerline		
CP	Control Point		
EL	Elevation		
FS	Finished Surface		
		LINE PATTERN KEY	
		---	Centerline



			COUNTY OF ORANGE OC PUBLIC WORKS OC SURVEY/FIELD SERVICES/BOUNDARY ANALYSIS & MAPPING	
			SANTA ANA RIVER (E01) HAMILTON BRIDGE TOPO	
			TOPOGRAPHIC MAP	
			PROJECT LIMITS: FROM APPROXIMATELY 360' S'LY AND 420' N'LY OF HAMILTON DR./	
			VICTORIA ST. ALONG THE SANTA ANA RIVER.	
			DATE OF SURVEY: 01/14/2022	BY: J. RUSSO & PARTY
			MAPPING	BY: J. PEDRETTI
			OFFICE CHECK	BY: M. LAFONTAINE, PLS
			FIELD CHECK	BY: J. RUSSO & PARTY
			SCALE: 1" = 40'	W.O. #EQ20588
			FILE #2122PW-PR0002	
			FILE: SANTA ANA HAMILTON BRIDGE TOPO 2022.DWG	
MARK	DATE	ITEM		
REVISIONS				
			SHEET NO.	
			2	
			of	
			2	