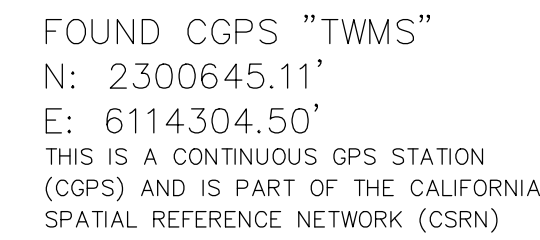


# RESTORATION PROJECT



N.T.S.

A circular professional seal for Michael Kubisty, a Licensed Land Surveyor in the State of California. The seal features the text "LICENSED LAND SURVEYOR" at the top, "MICHAEL KUBISTY" in the center, and "STATE OF CALIFORNIA" at the bottom. The number "No. 8036" is printed below the center. Two five-pointed stars are positioned on the left and right sides of the seal.

**U.S. Survey Foot**  
OC Public Works  
OC Survey/Field Services  
Boundary Analysis & Mapping

THE BASIS OF BEARINGS FOR THIS SURVEY IS BASED ON THE CALIFORNIA COORDINATE SYSTEM (CCS83), ZONE VI, NAD 83, OCS (2017.50) EPOCH ADJUSTMENT, AS DETERMINED LOCALLY BY A LINE BETWEEN CONTINUOUS GLOBAL POSITIONING STATIONS CGPS STATIONS (EOEC) AND (TWMS) BEING NORTH 05°06'51.12" EAST AS DERIVED FROM THE COORDINATES PUBLISHED BY THE CALIFORNIA SPATIAL REFERENCE CENTER (CSRC) ALONG WITH DATA SHEETS ON FILE IN THE OFFICE OF THE ORANGE COUNTY SURVEYOR.

ALL DISTANCES ARE BASED ON THE U.S. SURVEY FOOT.

DESCRIPTION: ELEVATIONS SHOWN HEREON WERE DERIVED BY STATIC GNSS OBSERVATIONS BASED ON AN ORTHOMETRIC HEIGHT (ELEVATION) OF 796.69' HELD AT CGPS STATION "TWMS" PER DATA SHEET PUBLISHED BY THE CALIFORNIA SPATIAL REFERENCE CENTER (CSRC)

THE PURPOSE OF THIS SURVEY IS TO PROVIDE TOPOGRAPHY FOR A  
PORTION OF THE NORTHERLY BANK OF THE SANTA ANA RIVER AND SHOW  
THE LATEST RIGHT OF WAY AND PROPERTY LINE CONFIGURATIONS  
ACCORDING TO COUNTY RECORDS AVAILABLE AT THIS TIME

SHEET	NO.	DESCRIPTION
SHEET	1	TITLE SHEET
SHEET	2-4	EXHIBIT
SHEET	5-6	SECTIONS

BOUNDARY, AND ENCUMBRANCE LINE WORK SHOWN HEREON IS DERIVED FROM THE COUNTY OF ORANGE G.I.S. LAND BASE AND IS FOR GRAPHICAL REPRESENTATION ONLY.

THE ALIGNMENT SHOWN HEREON WAS DEVELOPED BY HOLDING THE CENTERLINE OF THE ASPHALT BIKE PATH BEGINNING WITH AN ASSUMED STA. OF 10+00 AND INCREASING EASTERLY.

			COUNTY OF ORANGE OC PUBLIC WORKS OC SURVEY/FIELD SERVICES/BOUNDARY ANALYSIS & MAPPING				
			<b>GREEN RIVER RESTORATION PROJECT</b>				
			TITLE SHEET				
			PROJECT LIMITS: S'LY PORTION OF GREEN RIVER GOLF CLUB				
			DATE OF SURVEY:08/28/2023		BY: CHIEF & CREW		SHEET NO.  <b>1</b> of <b>6</b>
			MAPPING		BY: I. ISLAS		
			OFFICE CHECK		BY: M. KUBISTY, PLS		
			FIELD CHECK		BY: CHIEF & CREW		
			SCALE: N.T.S.		W.O. #EF03817		
			FILE: GREEN RIVER EXHIBIT 2023.DWG				
MARK	DATE	ITEM	REVISIONS				

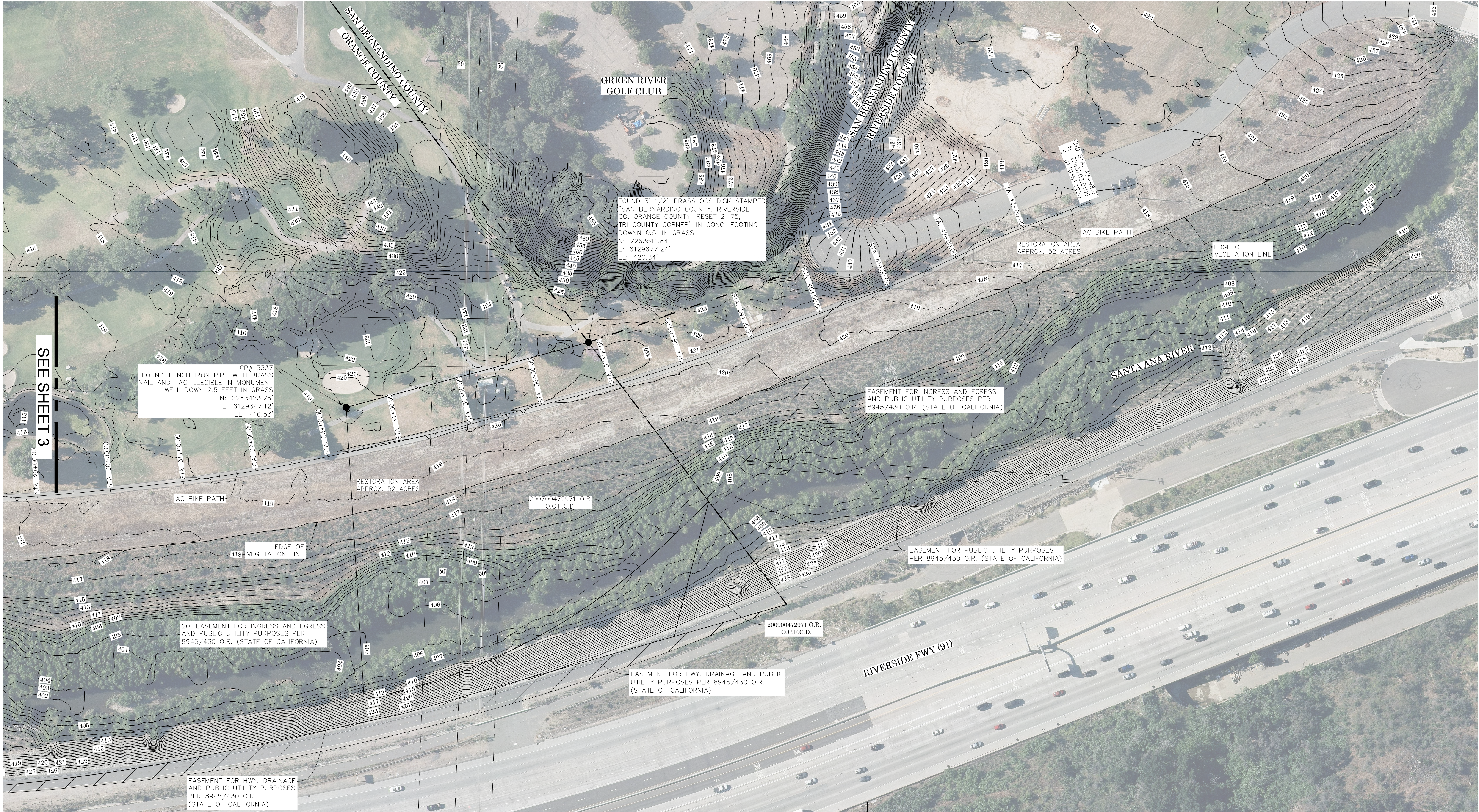


			COUNTY OF ORANGE OC PUBLIC WORKS OC SURVEY/FIELD SERVICES/BOUNDARY ANALYSIS & MAPPING	
			<h2 style="text-align: center;">GREEN RIVER</h2> <h3 style="text-align: center;">RESTORATION PROJECT</h3>	
			BOUNDARY AND ENCUMBERANCE MAP PROJECT LIMITS: S'LY PORTION OF GREEN RIVER GOLF CLUB	
			DATE OF SURVEY: 08/28/2023 MAPING OFFICE CHECK FIELD CHECK	BY: CHIEF & CREW BY: I. ISLAS BY: M. KUBISTY, PLS BY: CHIEF & CREW
MARK	DATE	ITEM	SCALE: 1"=200'      W.O. #EF03817 FILE: GREEN RIVER EXHIBIT 2023.DWG	
REVISIONS			SHEET NO. <b>2</b> of <b>6</b>	









SYMBOL

⊕

Manhole Sewer

LEGEND

LINE PATTERN KEY

Edge of Concrete

ALIGNMENT NOTE:  
THE ALIGNMENT SHOWN HEREON WAS DEVELOPED BY HOLDING THE CENTERLINE OF THE ASPHALT BIKE PATH BEGINNING WITH AN ASSUMED STA. OF 10+00 AND INCREASING EASTERLY.

0'30'60'120'180'

SCALE: 1" = 60'

CONTOUR INTERVAL: 1'

U.S. Survey

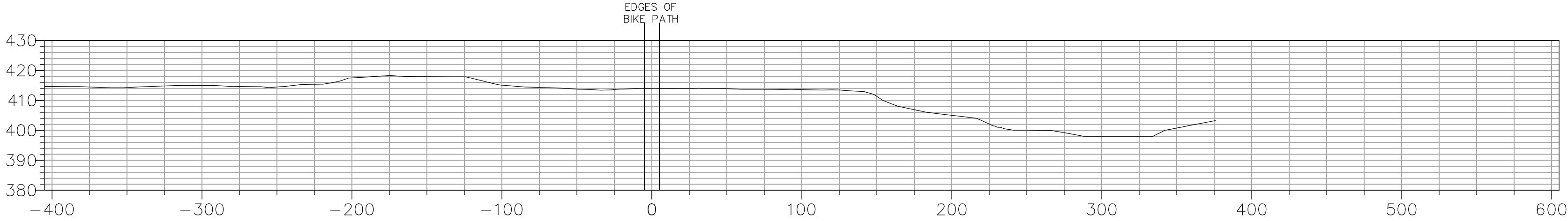
Foot

OC Public Works  
OC Survey/Field Services  
Boundary Analysis & Mapping

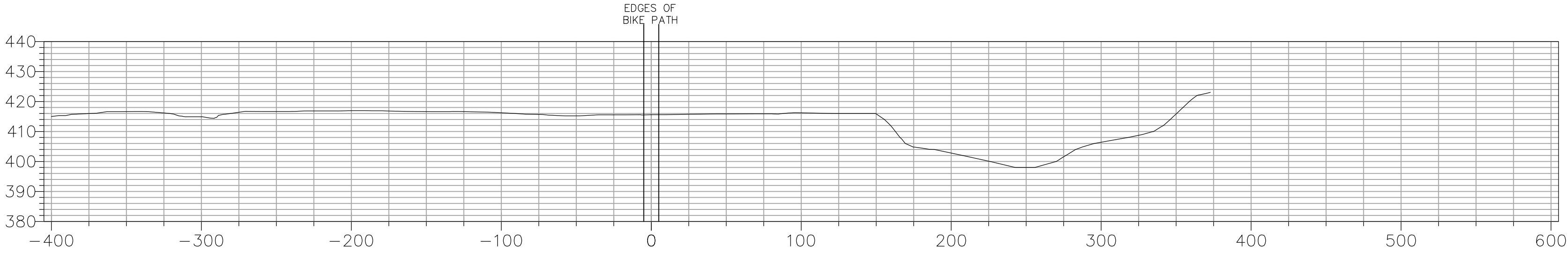
MARK	DATE	ITEM	COUNTY OF ORANGE OC PUBLIC WORKS OC SURVEY/FIELD SERVICES/BOUNDARY ANALYSIS & MAPPING		
			GREEN RIVER RESTORATION PROJECT		
			TOPOGRAPHY		
			PROJECT LIMITS: S'LY PORTION OF GREEN RIVER GOLF CLUB		
			DATE OF SURVEY: 08/28/2023		SHEET NO.  4 of  6
			MAPPING		
			OFFICE CHECK		BY: I. ISLAS
			FIELD CHECK		BY: M. KUBISTY, PLS
			SCALE: 1"=60'		BY: CHIEF & CREW
			FILE: GREEN RIVER EXHIBIT 2023.DWG		
REVISIONS					



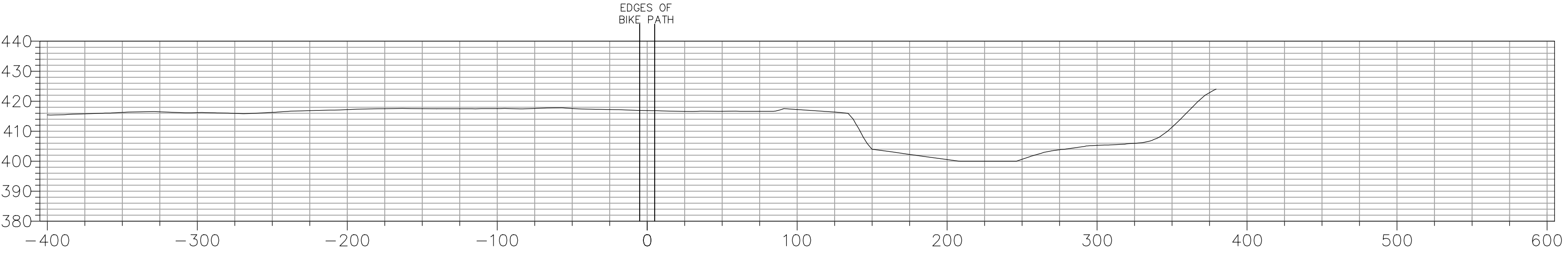
STA. 10+00



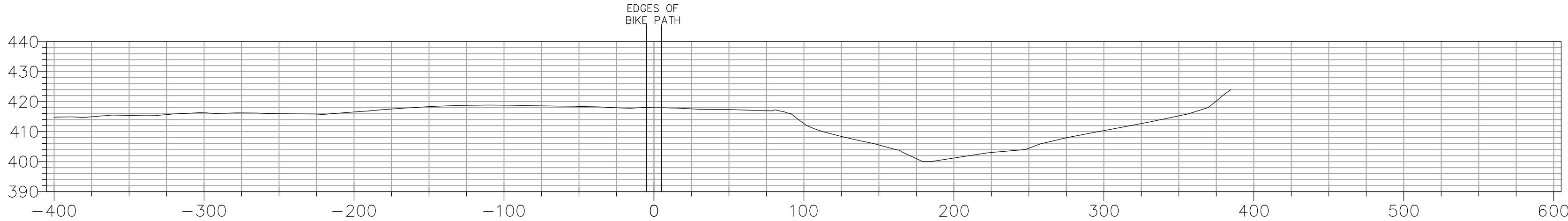
STA. 12+50



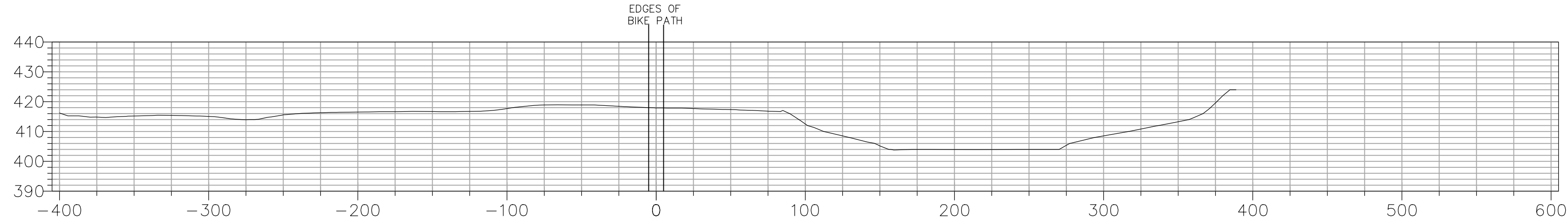
STA. 15+00



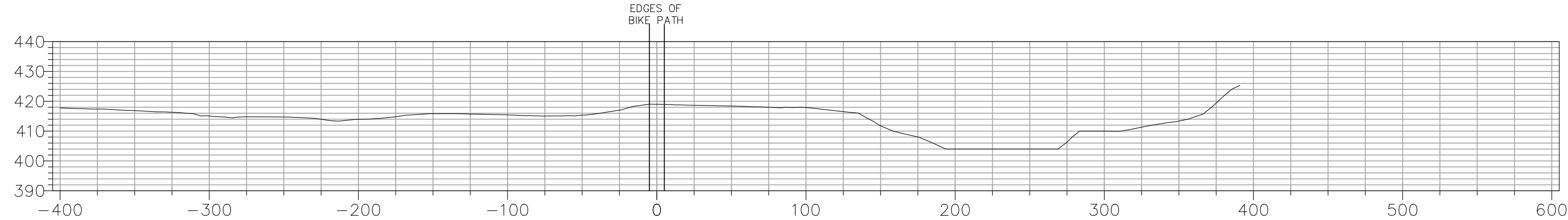
STA. 17+50



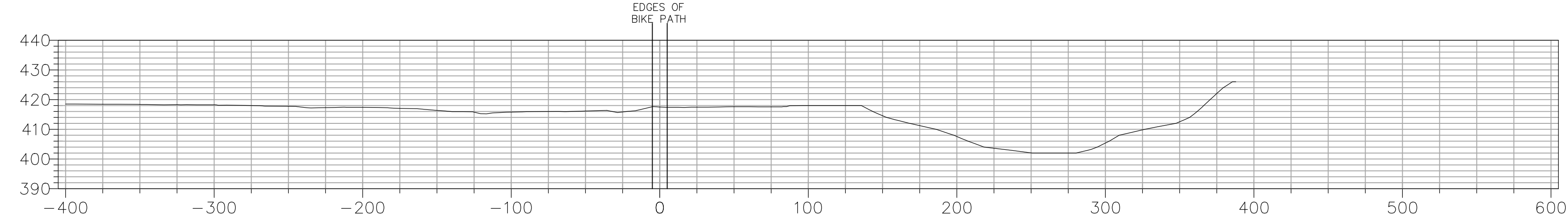
STA. 20+00



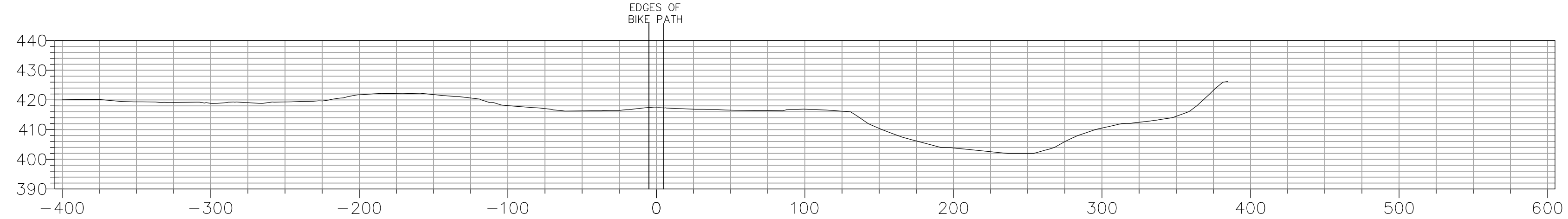
STA. 22+50



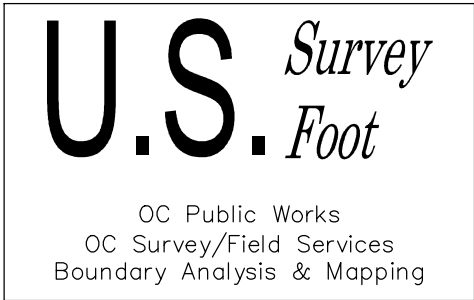
STA. 25+00



STA. 27+50



Vert. Scale: 1"=30'  
Hor. Scale: 1"=60'



**LEGEND**

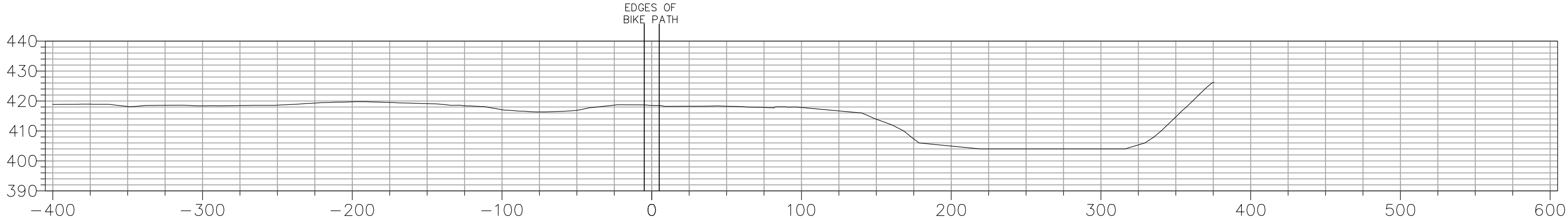
LINE PATTERN KEY

Existing Surface

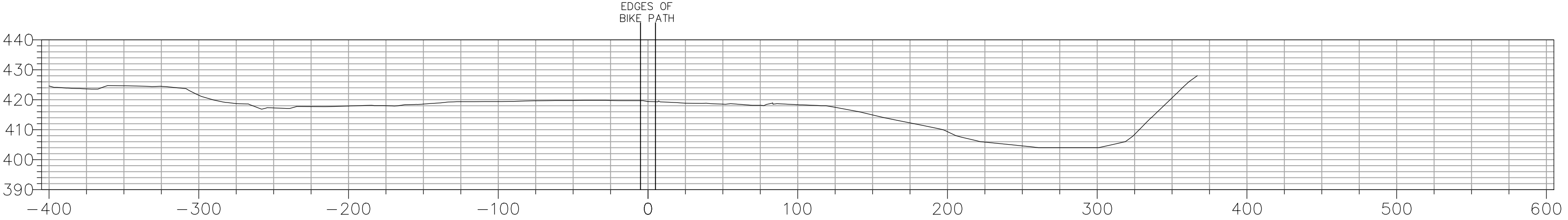
				COUNTY OF ORANGE OC PUBLIC WORKS OC SURVEY/FIELD SERVICES/BOUNDARY ANALYSIS & MAPPING	
		GREEN RIVER RESTORATION PROJECT			
		BOUNDARY MAP			
		PROJECT LIMITS: S'LY PORTION OF GREEN RIVER GOLF CLUB			
		DATE OF SURVEY: 08/28/2023		BY: CHIEF & CREW	
		MAPPING		BY: J. PEDRETTI	
		OFFICE CHECK		BY: M. KUBISTY, PLS	
		FIELD CHECK		BY: CHIEF & CREW	
		SCALE: N.T.S.		W.O. #EF03817	
		FILE: GREEN RIVER EXHIBIT 2023.DWG			
MARK	DATE	ITEM		SHEET NO.  5 of 6	
		REVISIONS			



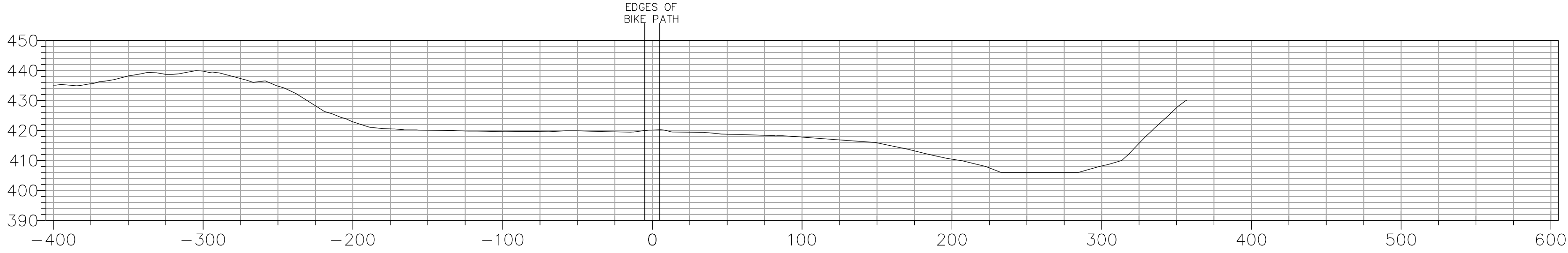
STA. 30+00



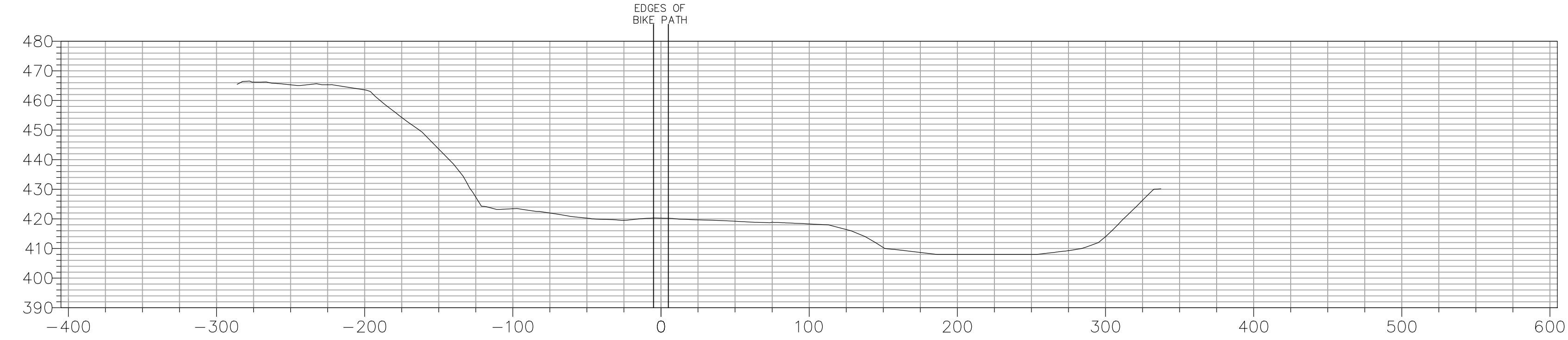
STA. 32+50



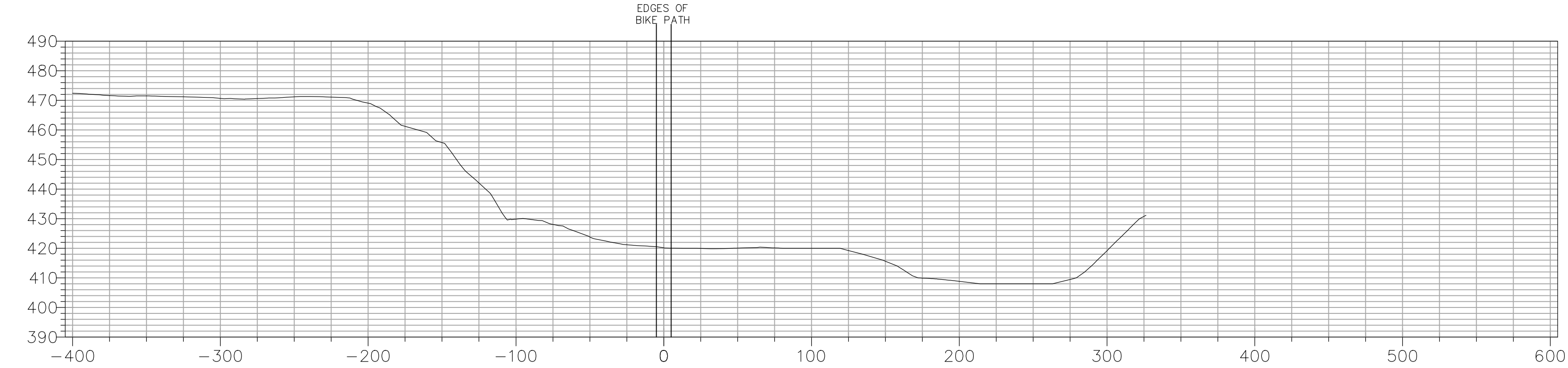
STA. 35+00



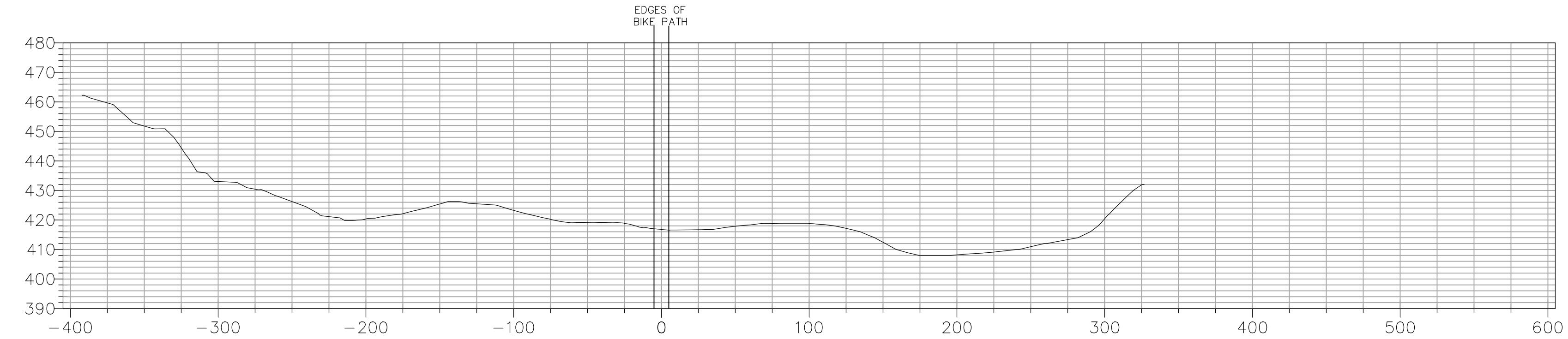
STA. 37+50



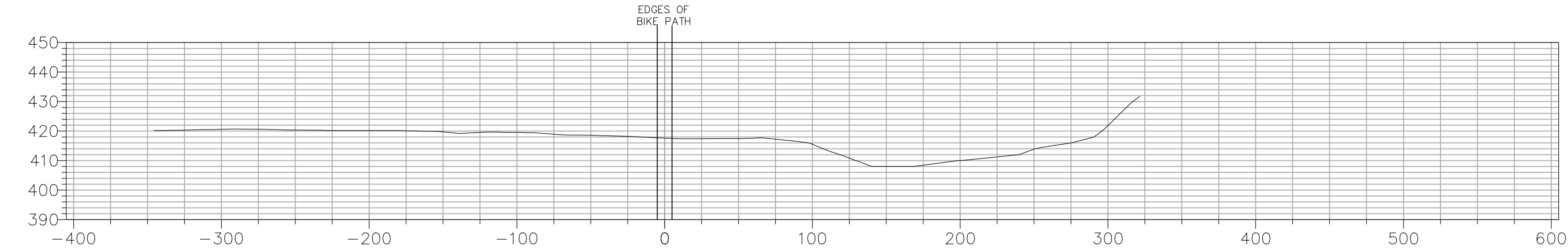
STA. 40+00



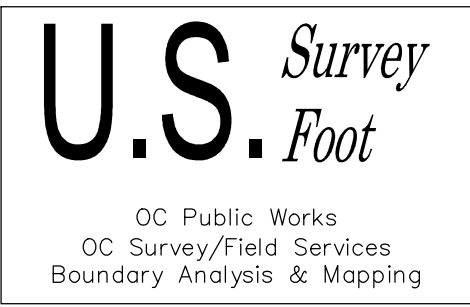
STA. 42+50



STA. 43+98



Vert. Scale: 1"=30'  
Hor. Scale: 1"=60'



LEGEND

LINE PATTERN KEY

Existing Surface

		COUNTY OF ORANGE OC PUBLIC WORKS OC SURVEY/FIELD SERVICES/BOUNDARY ANALYSIS & MAPPING	
		GREEN RIVER RESTORATION PROJECT	
		BOUNDARY MAP	
		PROJECT LIMITS: SLY PORTION OF GREEN RIVER GOLF CLUB	
		DATE OF SURVEY: 08/28/2023	BY: CHIEF & CREW
		MAPPING	BY: J. PEDRETTI
		OFFICE CHECK	BY: M. KUBISTY, PLS
		FIELD CHECK	BY: CHIEF & CREW
		SCALE: N.T.S.	W.O. #EF03817
		FILE: GREEN RIVER EXHIBIT 2023.DWG	
MARK	DATE	REVISIONS	

SHEET NO.  
6  
of  
6