



OC PUBLIC WORKS DEPARTMENT

SHANE SILSBY, DIRECTOR

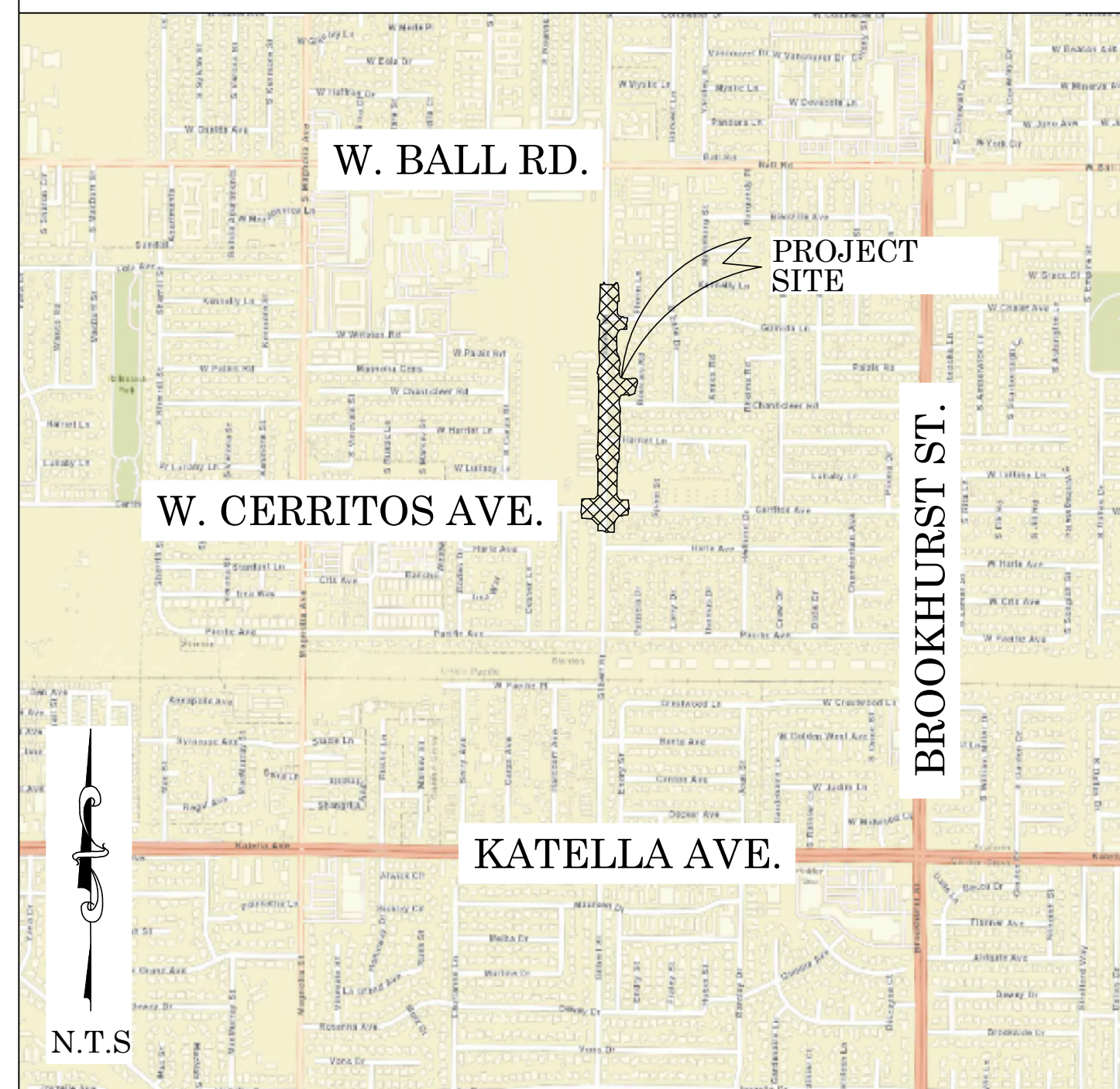
KEVIN HILLS, COUNTY SURVEYOR

GILBERT STREET

FIBER OPTIC EXPANSION



LOCATION MAP



SENIOR LAND SURVEYOR'S CERTIFICATE:

THIS MAP CORRECTLY REPRESENTS A SURVEY MADE BY ME OR UNDER MY DIRECTION IN CONFORMANCE WITH REQUIREMENTS OF THE PROFESSIONAL LAND SURVEYOR'S ACT; THIS 27 DAY OF DECEMBER, 2019.

ELLIOTT MEDINA, PLS. SENIOR LAND SURVEYOR



DEPUTY COUNTY SURVEYOR'S STATEMENT:

THIS MAP HAS BEEN EXAMINED IN ACCORDANCE WITH THE PROFESSIONAL LAND SURVEYOR'S ACT; THIS 27 DAY OF DECEMBER, 2019.

WADE WEAVER, PLS. DEPUTY COUNTY SURVEYOR

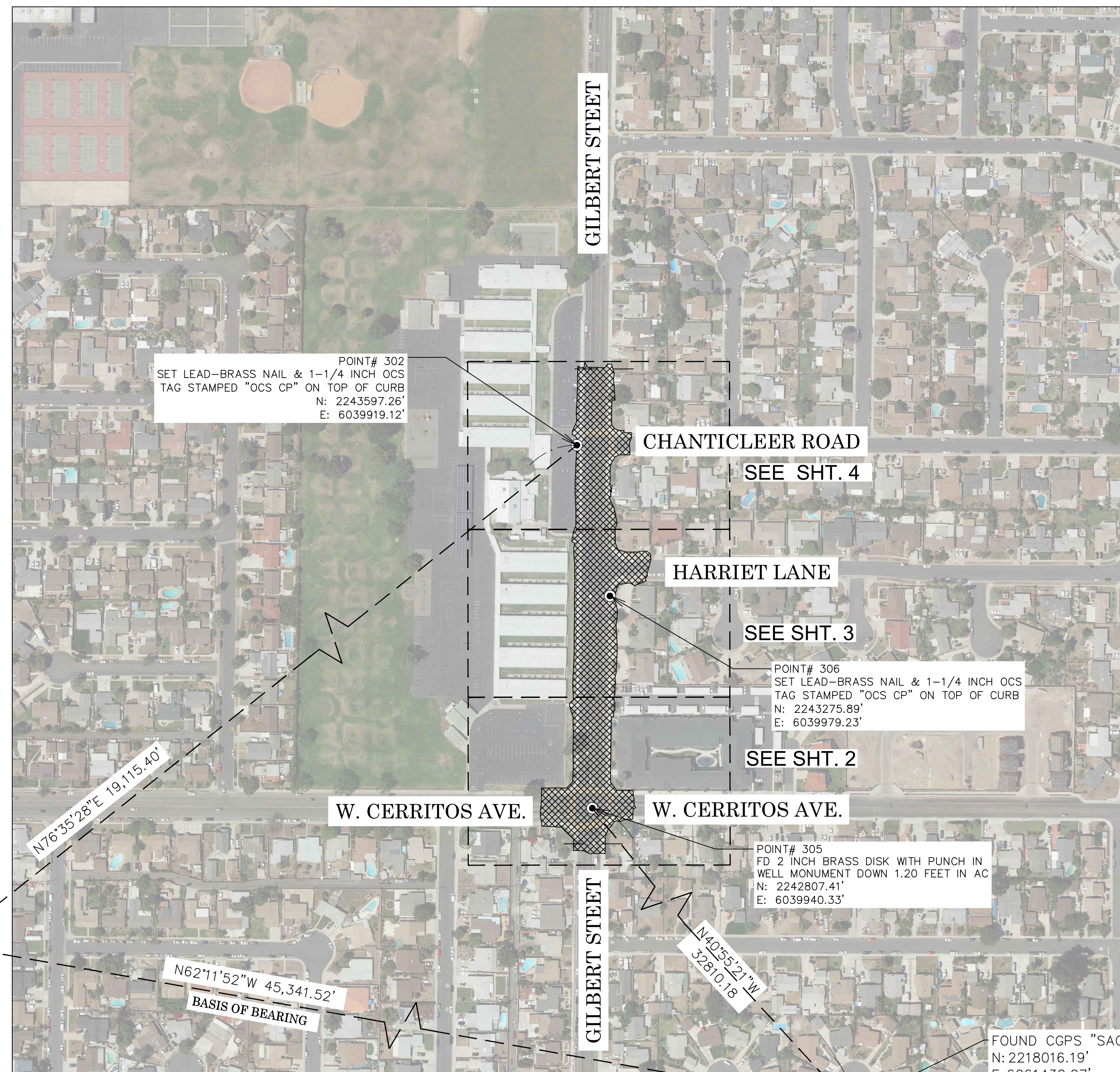


U.S. Survey
Foot

OC Public Works
OC Survey/Field Services
Boundary Analysis & Mapping

FOUND CGPS "BLSA"
N: 2239164.39'
E: 6021324.82'
THIS IS A CONTINUOUS GPS
STATION (CGPS) AND IS PART OF
THE CALIFORNIA SPATIAL
PREFERENCE NETWORK (CSRN),
FROM WHICH DATA CAN BE
DOWNLOADED HERE:
[HTTP://SOPACCSRC.UCSD.EDU/](http://SOPACCSRC.UCSD.EDU/).

N.T.S.



TOPOGRAPHIC MAPPING PROJECT

FOUND CGPS "SACY"
N: 2218016.19'
E: 6061432.27'
THIS IS A CONTINUOUS GPS
STATION (CGPS) AND IS PART OF
THE CALIFORNIA SPATIAL
PREFERENCE NETWORK (CSRN),
FROM WHICH DATA CAN BE
DOWNLOADED HERE:
[HTTP://SOPACCSRC.UCSD.EDU/](http://SOPACCSRC.UCSD.EDU/).

BASIS OF BEARINGS

THE BASIS OF BEARINGS FOR THIS SURVEY IS BASED ON THE CALIFORNIA COORDINATE SYSTEM (CCS83), ZONE VI, NAD 83, OCS (2017.50) EPOCH ADJUSTMENT, AS DETERMINED LOCALLY BY A LINE BETWEEN CONTINUOUS GLOBAL POSITIONING STATIONS CGPS (SACY) AND (BLSA) BEING NORTH 62°11'52" WEST AS DERIVED FROM THE COORDINATES PUBLISHED BY THE CALIFORNIA SPATIAL REFERENCE CENTER (CSRC) ALONG WITH DATA SHEETS ON FILE IN THE OFFICE OF THE ORANGE COUNTY SURVEYOR.

HORIZONTAL DATUM

COORDINATES SHOWN ARE BASED ON THE CALIFORNIA COORDINATE SYSTEM (CCS83), ZONE VI, NAD83, OCS 2017.50 EPOCH ADJUSTMENT.

ALL DISTANCES SHOWN ARE GRID, UNLESS OTHERWISE NOTED. TO OBTAIN GROUND DISTANCES MULTIPLY GRID BY 1.00001044. THE COMBINATION FACTOR WAS HELD AT POINT NUMBER 306.

ALL DISTANCES ARE BASED ON THE U.S. SURVEY FOOT.

VERTICAL DATUM

O.C.S. BM. 1G-140-69 ELEV. = 84.582' YEAR LEVELED: 2005
NAVD 1988 (O.C.S. 1995 ADJUSTMENT)

DESCRIBED BY OCS 2002 - FOUND 3 3/4" OCS ALUMINUM BENCHMARK DISK STAMPED "1G-140-69", SET IN THE NORTHWESTERLY CORNER OF A 16FT. BY 4 FT. CONCRETE CATCH BASIN. MONUMENT IS LOCATED IN THE NORTHEASTERLY CORNER OF THE INTERSECTION OF BALL ROAD AND MAGNOLIA STREET, 46 FT. NORTHERLY OF THE CENTER LINE OF BALL, AND 107 FT. EASTERLY OF THE CENTER LINE OF MAGNOLIA. MONUMENT IS SET LEVEL WITH THE SIDEWALK.

NOTES

THE SURVEY INFORMATION SHOWN HEREON IS TO BE USED FOR TOPOGRAPHIC RELATIONSHIPS ONLY AND IS NOT INTENDED FOR LAND ACQUISITION OR BOUNDARY PURPOSES. PARCELS SHOWN ARE FOR GRAPHICAL PURPOSES.

RIGHT OF WAY SHOWN WAS ESTABLISHED FROM RECORD MAPS AND DOCUMENTS, HOWEVER, A TITLE REPORT WAS NOT OBTAINED.

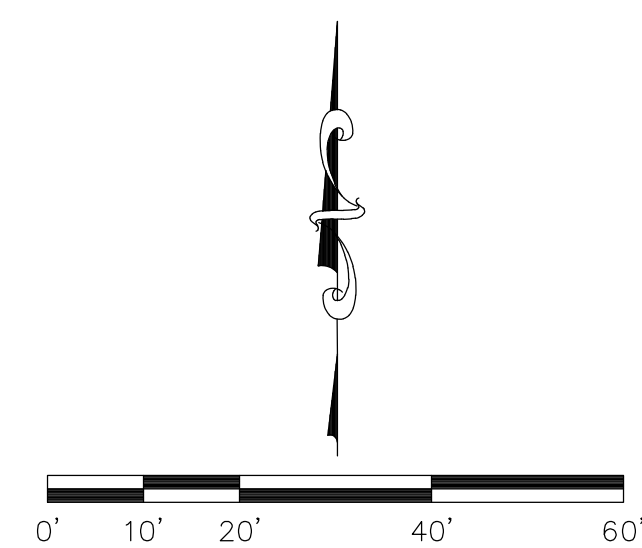
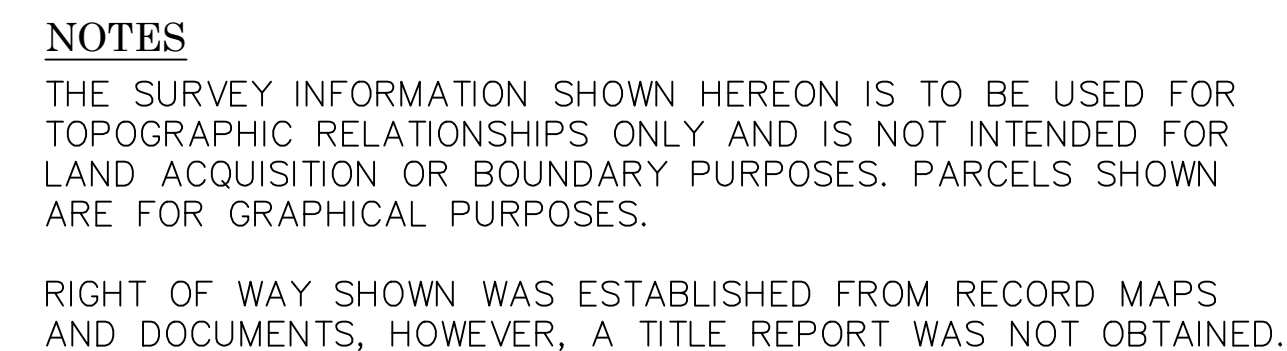
SHEET INDEX

SHEET NO.	DESCRIPTION
SHEET 1	TITLE SHEET
SHEETS 2-4	TOPOGRAPHIC MAP

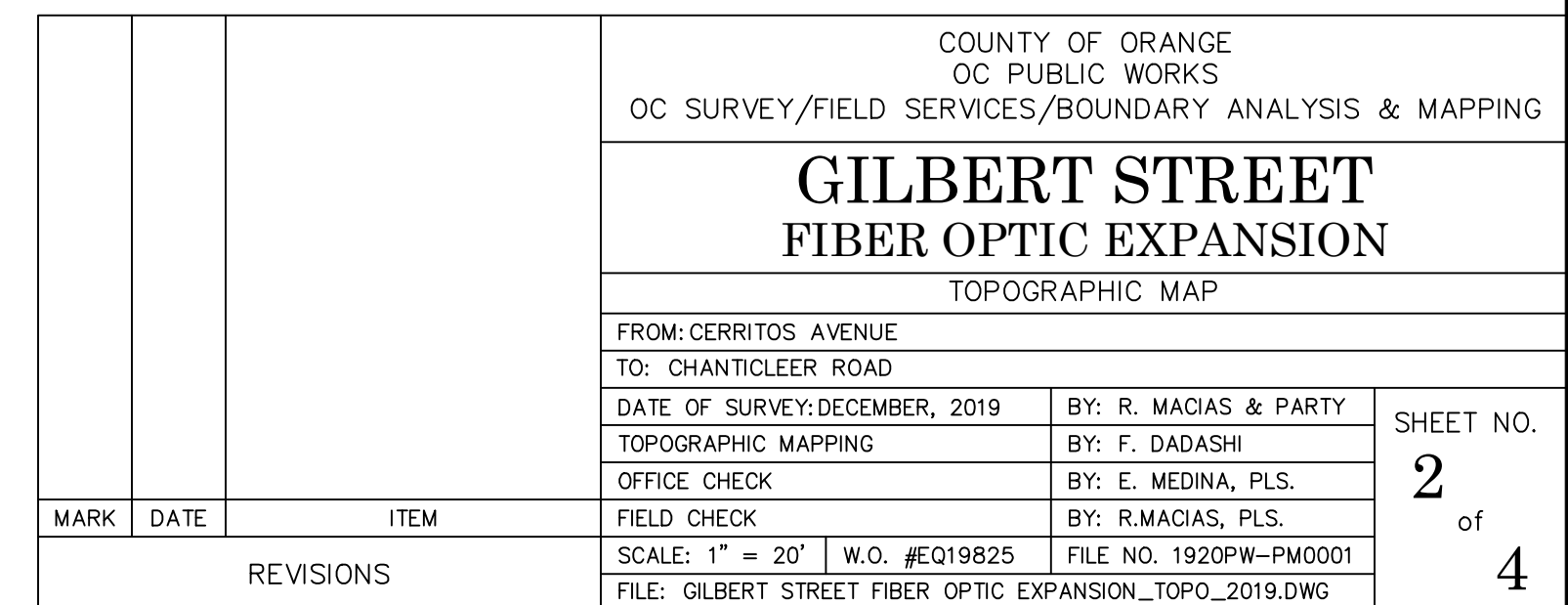
PURPOSE OF SURVEY

THE PURPOSE OF THIS SURVEY IS TO PROVIDE A TOPOGRAPHIC MAP FOR FIBER OPTIC EXPANSION ON GILBERT STREET.

		COUNTY OF ORANGE OC PUBLIC WORKS OC SURVEY/FIELD SERVICES/BOUNDARY ANALYSIS & MAPPING	
		GILBERT STREET FIBER OPTIC EXPANSION	
		TITLE SHEET	
		FROM: CERRITOS AVENUE TO: CHANTICLEER ROAD	
		DATE OF SURVEY: DECEMBER, 2019	BY: R. MACIAS & PARTY
		TOPOGRAPHIC MAPPING	BY: F. DADASHI
		OFFICE CHECK	BY: E. MEDINA, PLS.
		FIELD CHECK	BY: R. MACIAS, PLS.
		SCALE: N.T.S.	W.O. #E019825
		FILE NO. 1920PW-PM0001	
		FILE: GILBERT STREET FIBER OPTIC EXPANSION_TOPO_2019.DWG	
MARK	DATE	ITEM	
REVISIONS			
			SHEET NO. 1 of 4



OC Public Works
OC Survey/Field Services
Boundary Analysis & Mapping



LEGEND

SYMBOL PATTERN KEY

Pipe Inlet / Pipe Outlet Unless Vault -

Bush

Control Box-Electrical

Control Box-Traffic

Control Box-undefined

Gate-Double

Fire Hydrant

Guy Wire

Light Pole

Light Pole-Single

Manhole- Storm Drain

Manhole-Swerve

Meter-Water

Pedestrian signal

Post-Steel

Pull Box-Undefined

Rolling Gate

Sign

Traffic Signal

Traffic Signal with Light

Tree

Traffic Sensor

Utility Pole

Vault Water

Valve-Unknown

Valve-Water

Vent Pipe

LINE PATTERN KEY

Bush Line

Chain Link Fence

Centerline

Concrete Wall

Edge of Asphalt Pavement

Edge of Concrete Pavement

Flowline

Property Line

Right of Way

Street Striping

Wood Fence

Wrought Iron Fence

AREA PATTERN KEY

Concrete

Dirt

Planter

Truncated Dome

NOTES

THE SURVEY INFORMATION SHOWN HEREON IS TO BE USED FOR TOPOGRAPHIC RELATIONSHIPS ONLY AND IS NOT INTENDED FOR LAND ACQUISITION OR BOUNDARY PURPOSES. PARCELS SHOWN ARE FOR GRAPHICAL PURPOSES.

RIGHT OF WAY SHOWN WAS ESTABLISHED FROM RECORD MAPS AND DOCUMENTS, HOWEVER, A TITLE REPORT WAS NOT OBTAINED.

CONTOUR INTERVAL= 0.5'

COUNTY OF ORANGE OC PUBLIC WORKS OC SURVEY/FIELD SERVICES/BOUNDARY ANALYSIS & MAPPING			
GILBERT STREET FIBER OPTIC EXPANSION			
TOPOGRAPHIC MAP			
FROM: CERRITOS AVENUE			
TO: CHANTICLEER ROAD			
DATE OF SURVEY: DECEMBER, 2019	BY: R. MACIAS & PARTY	SHEET NO. 3 of 4	
TOPOGRAPHIC MAPPING	BY: F. DADASHI		
OFFICE CHECK	BY: E. MEDINA, PLS.		
FIELD CHECK	BY: R. MACIAS, PLS.		
SCALE: 1" = 20'		W.O. #E019825 FILE NO. 1920PW-PM0001	
FILE: GILBERT STREET FIBER OPTIC EXPANSION_TOPO_2019.DWG			
MARK	DATE	ITEM	REVISIONS

LINE PATTERN KEY

- ### AREA PATTERN KEY

SHEET NO.
4
of
4