

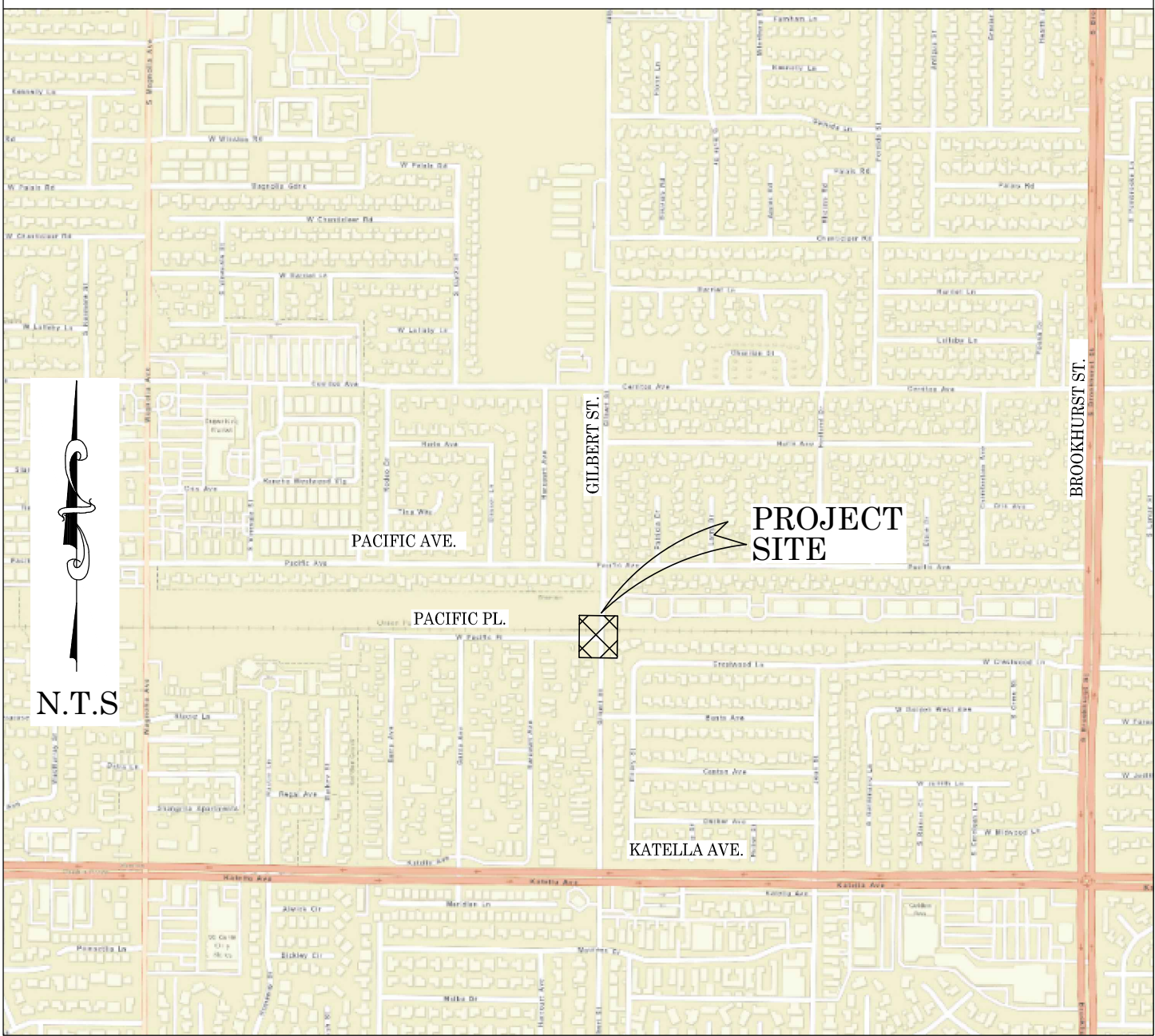


OC PUBLIC WORKS DEPARTMENT  
JAMES TREADAWAY, DIRECTOR OF PUBLIC WORKS  
KEVIN HILLS, COUNTY SURVEYOR  
GILBERT STREET



STREET IMPROVEMENTS PROJECT

LOCATION MAP



SENIOR LAND SURVEYOR'S CERTIFICATE:

THIS MAP CORRECTLY REPRESENTS A SURVEY MADE BY ME OR UNDER MY DIRECTION IN CONFORMANCE WITH REQUIREMENTS OF THE PROFESSIONAL LAND SURVEYOR'S ACT; THIS 5 DAY OF AUGUST, 2021.

MICHAEL KUBISTY, PLS. SENIOR LAND SURVEYOR



DEPUTY COUNTY SURVEYOR'S STATEMENT:

THIS MAP HAS BEEN EXAMINED IN ACCORDANCE WITH THE PROFESSIONAL LAND SURVEYOR'S ACT; THIS 5 DAY OF AUGUST, 2021.

WADE WEAVER, PLS. DEPUTY COUNTY SURVEYOR



TOPOGRAPHIC MAPPING PROJECT



BASIS OF BEARINGS

THE BASIS OF BEARINGS FOR THIS SURVEY IS BASED ON THE CALIFORNIA COORDINATE SYSTEM (CCS83), ZONE VI, NAD 83, OCS (2017.50) EPOCH ADJUSTMENT, AS DETERMINED LOCALLY BY A LINE BETWEEN CONTINUOUS GLOBAL POSITIONING STATIONS CGPS STATIONS (SACY) AND (CCCS) BEING NORTH 12°58'34" EAST AS DERIVED FROM THE COORDINATES PUBLISHED BY THE CALIFORNIA SPATIAL REFERENCE CENTER (CSRC) ALONG WITH DATA SHEETS ON FILE IN THE OFFICE OF THE ORANGE COUNTY SURVEYOR.

HORIZONTAL DATUM

COORDINATES SHOWN ARE BASED ON THE CALIFORNIA COORDINATE SYSTEM (CCS83), ZONE VI, NAD 83, OCS (2017.50) EPOCH ADJUSTMENT.  
ALL DISTANCES SHOWN ARE GRID, UNLESS OTHERWISE NOTED, TO OBTAIN GROUND DISTANCES MULTIPLY GRID BY A COMBINED FACTOR OF 1.0000107.  
THIS COMBINATION FACTOR WAS HELD AT: CP# 403  
N: 2241463.54' E: 6039951.00' EL: 91.51'  
ALL DISTANCES ARE BASED ON THE U.S. SURVEY FOOT.

VERTICAL DATUM

O.C.S. BM. 1G-139-69 ELEV. = 80.053' YEAR LEVELED: 2005  
NAVD 1988 (O.C.S. 1995 ADJUSTMENT)  
DESCRIBED BY OCS 2002 - FOUND 3 3/4" OCS ALUMINUM BENCHMARK DISK STAMPED "1G-139-69", SET IN THE TOP OF A 6 IN. BY 6 IN. CONCRETE POST. MONUMENT IS LOCATED IN THE NORTHWESTERLY CORNER OF THE INTERSECTION OF CERRITOS AVENUE AND MAGNOLIA STREET, 44 POST. WESTERLY OF THE CENTERLINE OF MAGNOLIA AND 113 FT. NORTHERLY OF THE CENTERLINE OF CERRITOS. MONUMENT IS SET LEVEL WITH THE SIDEWALK.

NOTES

THE SURVEY INFORMATION SHOWN HEREON IS TO BE USED FOR TOPOGRAPHIC RELATIONSHIPS ONLY AND IS NOT INTENDED FOR LAND ACQUISITION OR BOUNDARY PURPOSES.

SHEET INDEX

SHEET	NO.	DESCRIPTION
SHEET 1	TITLE SHEET	
SHEETS 2-4	BOUNDARY MAP	
SHEET 5	TOPOGRAPHIC MAP	
SHEET 6	UTILITY MAP	

PURPOSE OF SURVEY

THE PURPOSE OF THE SURVEY IS TO PROVIDE A TOPOGRAPHIC MAP AND RIGHT OF WAY ESTABLISHMENT FOR THIS PORTION OF GILBERT STREET.

COUNTY OF ORANGE OC PUBLIC WORKS OC SURVEY/FIELD SERVICES/BOUNDARY ANALYSIS & MAPPING			
GILBERT STREET STREET IMPROVEMENTS PROJECT			
TITLE SHEET			
PROJECT LIMITS: FROM 300' S'LY AND N'LY THE INTERSECTION OF GILBERT ST. AND THE INTERSECTION OF GILBERT ST. AND THE SOUTHERN PACIFIC RAILROAD.			
DATE OF SURVEY: 07/18/2021	BY: T. LOFGREEN AND PARTY	SHEET NO. <b>1</b> of <b>6</b>	
MAPPING	BY: H. AFIM		
OFFICE CHECK	BY: M. KUBISTY, PLS.		
FIELD CHECK	BY: T. LOFGREEN AND PARTY		
SCALE: N.T.S.	W.O. #EQ160105		
REVISIONS		FILE: #2021PW-PM0007 FILE: GILBERT STREET_TOPO_2021.DWG	



ESTABLISHMENT NOTES

- Ⓐ ESTABLISHED THE CENTERLINE OF KATELLA AVE. BY HOLDING A LINE BETWEEN MONUMENTS **1** AND **2**.
- Ⓑ ESTABLISHED THE CENTERLINE OF KATELLA AVE. BY HOLDING A LINE BETWEEN MONUMENTS **2** AND **3**.
- Ⓒ S.F.N. ESTABLISHED THE CENTERLINE OF BROOKHURST ST. BY HOLDING A LINE BETWEEN MONUMENTS **3** AND **4**.
- Ⓓ ESTABLISHED THE SE'LY CORNER OF THE NORTH HALF OF THE SE'LY QUARTER OF SECTION 19, T4S, R10W BY PROPORTION BETWEEN MONUMENTS **3** AND **4** PER (R1) ALONG ESTABLISHMENT **C**.
- Ⓔ ESTABLISHED THE CENTERLINE OF CERRITOS AVE. BY HOLDING A LINE BETWEEN MONUMENTS **4** AND **5**.
- Ⓕ ESTABLISHED THE CENTERLINE OF CERRITOS AVE. BY HOLDING A LINE BETWEEN MONUMENTS **5** AND **6**.
- Ⓖ ESTABLISHED THE CENTERLINE OF MAGNOLIA AVE. BY HOLDING A LINE BETWEEN MONUMENTS **1** AND **6**.
- Ⓗ S.F.N. ESTABLISHED THE SW'LY CORNER OF THE NORTH HALF OF THE SW'LY QUARTER OF SECTION 19, T4S, R10W BY PROPORTION BETWEEN MONUMENTS **6** AND **1** PER (R1). ALONG ESTABLISHMENT **C**.
- Ⓙ S.F.N. ESTABLISHED THE SE. COR. OF N1/2 OF SW 1/4 OF SEC. 19, T4S, R10W SBBM BY PROPORTION BETWEEN MONUMENTS **5** AND **2** PER (R1). ALONG ESTABLISHMENT **P**.
- Ⓛ ESTABLISHED THE CENTERLINE OF UNION PACIFIC RAILROAD BY HOLDING A LINE BETWEEN ESTABLISHMENT NOTES **H** AND **1** PER (R1&R14).
- Ⓚ ESTABLISHED THE CENTERLINE OF UNION PACIFIC RAILROAD BY HOLDING A LINE BETWEEN ESTABLISHMENT NOTES **1** AND **D** PER (R1&R14).
- Ⓛ ESTABLISHED THE CENTERLINE OF PACIFIC PLACE BY HOLDING RECORD DISTANCE OF 45' PER (R3) S'LY OF AND PARALLEL WITH LINE ESTABLISHMENT NOTE **D**.
- Ⓜ ESTABLISHED THE N'LY RIGHT OF WAY OF PACIFIC PLACE AND THE S'LY RIGHT OF WAY OF UNION PACIFIC RAILROAD BY HOLDING RECORD DISTANCE OF 30' PER (R3 & R14) S'LY OF AND PARALLEL WITH LINE ESTABLISHMENT NOTE **D**.
- Ⓝ ESTABLISHED THE S'LY RIGHT OF WAY OF PACIFIC PLACE BY HOLDING RECORD DISTANCE OF 15' PER (R3) S'LY OF AND PARALLEL WITH LINE ESTABLISHMENT NOTE **L**.
- Ⓞ ESTABLISHED THE N'LY RIGHT OF WAY OF UNION PACIFIC RAILROAD BY HOLDING RECORD DISTANCE OF 30' PER (R3 & R13) N'LY OF AND PARALLEL WITH LINE ESTABLISHMENT NOTE **D**.
- Ⓟ ESTABLISHED THE CENTERLINE OF GILBERT ST. BY HOLDING A LINE BETWEEN MONUMENTS **5** AND **2**.
- Ⓠ ESTABLISHED THE W'LY RIGHT OF WAY OF GILBERT ST. BY HOLDING RECORD DISTANCE OF 40' PER (R20 & R21) W'LY OF AND PARALLEL WITH LINE ESTABLISHMENT NOTE **P**.
- Ⓡ ESTABLISHED THE E'LY RIGHT OF WAY OF GILBERT ST. BY HOLDING RECORD DISTANCE OF 30' PER (R4) E'LY OF AND PARALLEL WITH LINE ESTABLISHMENT NOTE **P**.
- Ⓢ ESTABLISHED THE S'LY RIGHT OF WAY OF UNION PACIFIC RAILROAD BY HOLDING RECORD DISTANCE OF 30' PER (R14) S'LY OF AND PARALLEL WITH LINE ESTABLISHMENT NOTE **K**.
- Ⓣ ESTABLISHED THE N'LY RIGHT OF WAY OF UNION PACIFIC RAILROAD BY HOLDING RECORD DISTANCE OF 30' PER (R13) N'LY OF AND PARALLEL WITH LINE ESTABLISHMENT NOTE **K**.
- Ⓤ ESTABLISHED THE W'LY RIGHT OF WAY OF GILBERT ST. BY HOLDING RECORD DISTANCE OF 40' PER (R19) W'LY OF AND PARALLEL WITH LINE ESTABLISHMENT NOTE **P**.
- Ⓥ ESTABLISHED THE E'LY RIGHT OF WAY OF GILBERT ST. BY HOLDING RECORD DISTANCE OF 40' PER (R16) E'LY OF AND PARALLEL WITH LINE ESTABLISHMENT NOTE **P**.
- Ⓦ ESTABLISHED THE W'LY RIGHT OF WAY OF GILBERT ST. BY HOLDING RECORD DISTANCE OF 40' PER (R16) W'LY OF AND PARALLEL WITH LINE ESTABLISHMENT NOTE **P**.
- Ⓧ ESTABLISHED THE P.O.B. OF R15 BY INTERSECTION HOLDING THE PROLONGATION OF LINE ESTABLISHMENT NOTES **M** AND **U**.

ESTABLISHMENT NOTES

- Ⓢ ESTABLISHED THE W'LY RIGHT OF WAY OF GILBERT ST. BY HOLDING RECORD DISTANCES PER (R15) AND THE POINT OF BEGINNING PER ESTABLISHMENT NOTE **X**.
- Ⓣ ESTABLISHED THE E'LY RIGHT OF WAY OF GILBERT ST. BY HOLDING RECORD DISTANCE OF 30' PER (R18) E'LY OF AND PARALLEL WITH LINE ESTABLISHMENT NOTE **P**.
- Ⓤ ESTABLISHED THE W'LY LINE OF PARCEL 4 PER (R17) BY HOLDING RECORD DISTANCE OF 15' E'LY OF AND PARALLEL WITH LINE ESTABLISHMENT NOTE **P**.
- Ⓥ ESTABLISHED THE E'LY LINE OF PARCEL 3 PER (R17) BY HOLDING RECORD DISTANCE OF 15' W'LY OF AND PARALLEL WITH LINE ESTABLISHMENT NOTE **P**.
- Ⓦ ESTABLISHED THE NE'LY CORNER OF LOT 18 PER (R20) BY INTERSECTION HOLDING RECORD DISTANCE OF 40' W'LY OF AND PARALLEL WITH LINE ESTABLISHMENT NOTE **P** AND RECORD DISTANCE OF 52' S'LY OF AND PARALLEL WITH LINE ESTABLISHMENT NOTE **L**.
- Ⓧ ESTABLISHED THE NE'LY CORNER OF LOT 18 PER (R20) BY INTERSECTION HOLDING RECORD DISTANCE OF 82' W'LY OF AND PARALLEL WITH LINE ESTABLISHMENT NOTE **P** AND RECORD DISTANCE OF 15' S'LY OF AND PARALLEL WITH LINE ESTABLISHMENT NOTE **L**.
- Ⓨ ESTABLISHED THE NE'LY LINE OF LOT 18 PER (R20) BY HOLDING LINE BETWEEN ESTABLISHMENT NOTES **AC** AND **AD**.

MONUMENT NOTES

- 1** FOUND 2 1/2" PUNCHED ALUMINUM DISK STAMPED "OCS", PER (R7), FLUSH IN AC, HELD AS THE SW CORNER OF SECTION 19 T4S, R10W ALSO ACCEPTED AS THE CENTERLINE INTERSECTION OF MAGNOLIA AVE. AND KATELLA AVE.
- 2** FOUND 2 1/2 " PUNCHED BRASS DISK STAMPED "OCS", PER (R8), DOWN 1.0' IN O.C.S. WELL MONUMENT, HELD AS THE S 1/4 CORNER OF SECTION 19 T4S, R10W. ALSO ACCEPTED AS THE CENTERLINE INTERSECTION OF GILBERT ST. AND KATELLA AVE.
- 3** FOUND HEX BAR, PER (R9), DOWN 1.0' IN O.C.S. WELL MONUMENT, HELD AS THE SE CORNER OF SECTION 19 T4S, R10W. ALSO ACCEPTED AS THE CENTERLINE INTERSECTION OF BROOKHURST ST. AND KATELLA AVE.
- 4** FOUND GEAR SPIKE AND TAG STAMPED "C OF A SURVEY", PER (R10), FLUSH IN AC, HELD AS THE E 1/4 CORNER OF SECTION 19 T4S, R10W. ALSO ACCEPTED AS THE CENTERLINE INTERSECTION OF BROOKHURST ST. AND CERRITOS AVE.
- 5** FOUND 2 1/4" BRASS CAP, ILLEGIBLE, PER (R2), DOWN 1.2 IN O.C.S. WELL MONUMENT, HELD AS THE CENTER OF SECTION 19 T4S, R10W. ALSO ACCEPTED AS THE CENTERLINE INTERSECTION OF GILBERT ST. AND CERRITOS AVE.
- 6** FOUND PUNCHED HEX BAR, PER (R11), DOWN 1.6 IN O.C.S WELL MONUMENT, HELD AS THE W 1/4 CORNER OF SECTION 19 T4S, R10W. ALSO ACCEPTED AS THE CENTERLINE INTERSECTION OF MAGNOLIA AVE. AND CERRITOS AVE.
- 7** FOUND PUNCHED SQUARE HEAD SPIKE AND WASHER STAMPED "OCS", NO REFERENCE, FLUSH IN AC, ACCEPTED AS THE CENTERLINE INTERSECTION OF BANTA AVE. AND GILBERT ST.
- 8** FOUND PUNCHED SQUARE HEAD SPIKE AND WASHER STAMPED "OCS", NO REFERENCE, FLUSH IN AC, ACCEPTED AS THE CENTERLINE INTERSECTION OF PACIFIC AVE. AND GILBERT ST.

LINE TABLE			
LINE #	BEARING	MEASURED DISTANCE	RECORD DISTANCE
L1	N00°18'58"E	15.00'	15.00' (R20)
L2	N89°41'30"W	27.00'	26.92' (R15)
L3	N00°45'30"E	10.00'	10.00' (R15)
L4	N45°32'00"E	38.33'	38.33' (R15)
L5	N00°45'30"E	37.00'	37.00' (R15)
L6	N00°45'30"E	23.00'	- - - -
L7	N89°41'02"W	25.00'	25.00' (R16)
L8	N89°39'38"W	15.00'	15.00' (R16)
L9	N89°39'38"W	10.00'	10.00' (R16)
L10	N00°45'30"E	60.00'	60.00' (R16)
L11	N89°39'38"W	10.00'	10.00' (R16)

REFERENCES

- (R1) = RECORD OF SURVEY, RSB 54/41-45
- (R2) = RECORD OF SURVEY, RSB 97-16
- (R3) = TRACT NO. 534, M.M. 18/4
- (R4) = TRACT NO. 2111, M.M. 61/46-48
- (R5) = TRACT NO. 2116, M.M. 58/5-6
- (R6) = TRACT NO. 1567, M.M. 78/21-23
- (R7) = CORNER RECORD, C.R. 2012-1973
- (R8) = CORNER RECORD, C.R. 2012-1208
- (R9) = COUNTY SURVEY TIE BOOK, 108/6-10
- (R10) = CORNER RECORD, C.R. 2016-1737
- (R11) = O.C.S. ALIGNMENT NOTE A/4-10/490
- (R12) = O.C.S. ALIGNMENT NOTE A/4-10/916
- (R13) = RECORD PER INST. BOOK 29, PAGE 199 DDS.
- (R14) = RECORD PER INST. BOOK 37, PAGE 199 DDS.
- (R15) = RECORD PER INST. BOOK 8874, PAGE 807 O.R.
- (R16) = RECORD PER INST. BOOK 8202, PAGE 232 O.R.
- (R17) = RECORD PER INST. BOOK 1008, PAGE 171 O.R.
- (R18) = RECORD PER INST. BOOK 9284, PAGE 728 O.R.
- (R19) = RECORD PER INST. BOOK 8929, PAGE 408 O.R.
- (R20) = RECORD PER INST. BOOK 8838, PAGE 705 O.R.
- (R21) = RECORD PER INST. NO. 2016-00016464 O.R.

NOTES

ALL BOUNDARY LINES NOT SHOWN IN BOLD ARE FOR GRAPHICAL REPRESENTATION ONLY.

RECORD DISTANCES SHOWN HEREON ARE AS THEY APPEAR ON THE DOCUMENT OF RECORD. DISTANCES MAY BE EITHER GRID OR GROUND, AS PER SAID RECORD.

REFERENCE DOCUMENTS IN THE REFERENCE LEGEND ARE LIVE HYPERLINKS TO SAID DOCUMENT.

MONUMENT SYMBOLS CONTAIN LIVE HYPERLINKS TO IMAGES, IF THEY EXIST, OF RESPECTIVE MONUMENT.

BASIS OF BEARINGS

THE BASIS OF BEARINGS FOR THIS SURVEY IS BASED ON THE CALIFORNIA COORDINATE SYSTEM (CCS83), ZONE VI, NAD 83, OCS (2017.50) EPOCH ADJUSTMENT, AS DETERMINED LOCALLY BY A LINE BETWEEN CONTINUOUS GLOBAL POSITIONING STATIONS CGPS STATIONS (SACY) AND (CCCS) BEING NORTH 12°58'34" EAST AS DERIVED FROM THE COORDINATES PUBLISHED BY THE CALIFORNIA SPATIAL REFERENCE CENTER (CSRC) ALONG WITH DATA SHEETS ON FILE IN THE OFFICE OF THE ORANGE COUNTY SURVEYOR.

HORIZONTAL DATUM

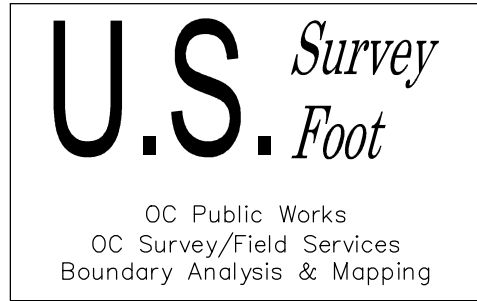
COORDINATES SHOWN ARE BASED ON THE CALIFORNIA COORDINATE SYSTEM (CCS83), ZONE VI, NAD 83, OCS (2017.50) EPOCH ADJUSTMENT.

ALL DISTANCES SHOWN ARE GRID, UNLESS OTHERWISE NOTED, TO OBTAIN GROUND DISTANCE MULTIPLY A GRID DISTANCE BY 1.0000107.

THIS COMBINATION FACTOR WAS HELD AT: CP# 403  
N:2241463.54' E:6039951.00' EL:91.51'

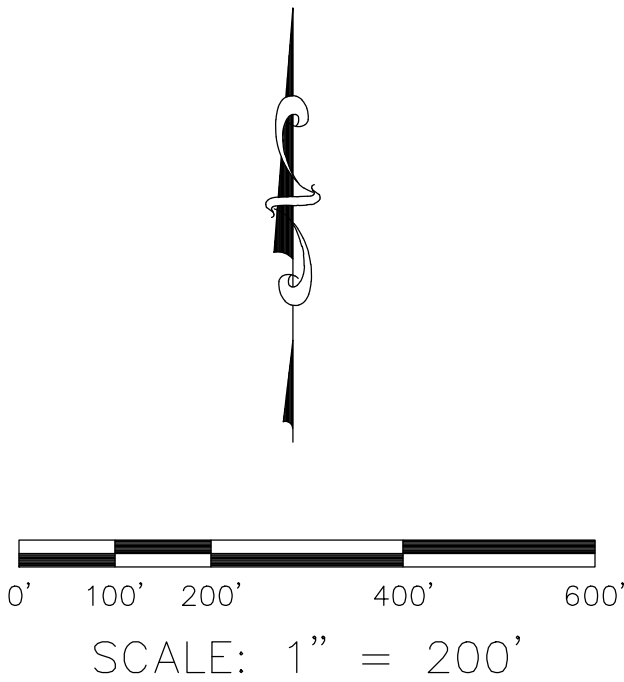
ALL DISTANCES ARE BASED ON THE U.S. SURVEY FOOT.

			COUNTY OF ORANGE OC PUBLIC WORKS OC SURVEY/FIELD SERVICES/BOUNDARY ANALYSIS & MAPPING		
			GILBERT STREET STREET IMPROVEMENTS PROJECT		
			BOUNDARY MAP		
			PROJECT LIMITS: FROM 300' S'LY AND N'LY THE INTERSECTION OF GILBERT ST. AND THE INTERSECTION OF GILBERT ST. AND THE SOUTHERN PACIFIC RAILROAD.		
			DATE OF SURVEY: 07/18/2021	BY: T. LOFGREEN AND PARTY	SHEET NO.  2 of 6
			MAPPING	BY: H. AFTIM	
			OFFICE CHECK	BY: M. KUBISTY, PLS	
MARK	DATE	ITEM	FIELD CHECK	BY: T. LOFGREEN AND PARTY	
REVISIONS			SCALE: N.T.S.	W.O. #EQ16010S FILE #2021PW-PW0007	

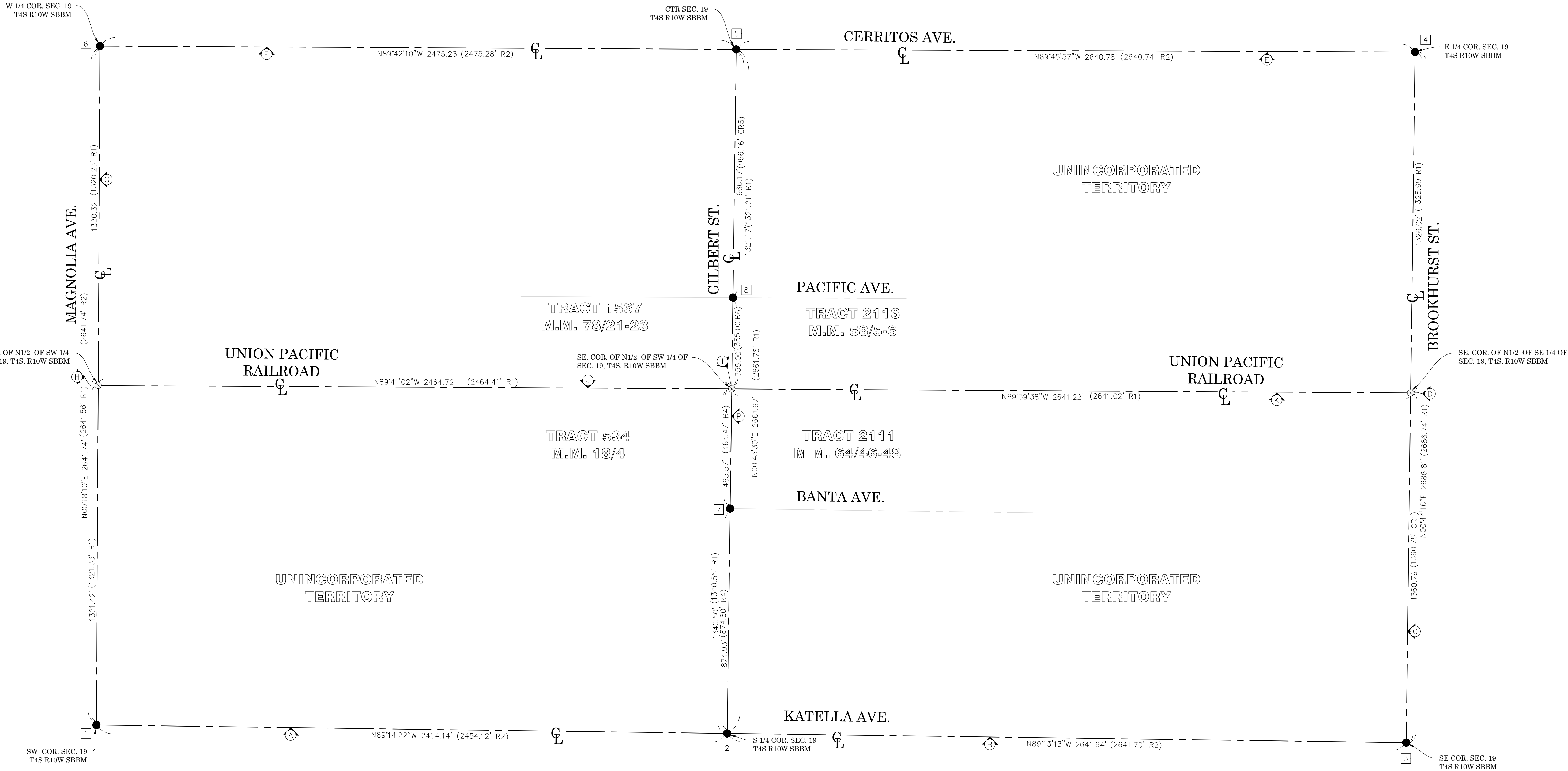


LEGEND

- FOUND MONUMENT AS NOTED
- ⊗ S.F.N. — SEARCHED, NOTHING FOUND
- CR CALC FROM RECORD MAP
- R RECORD MAP
- M MEASURED

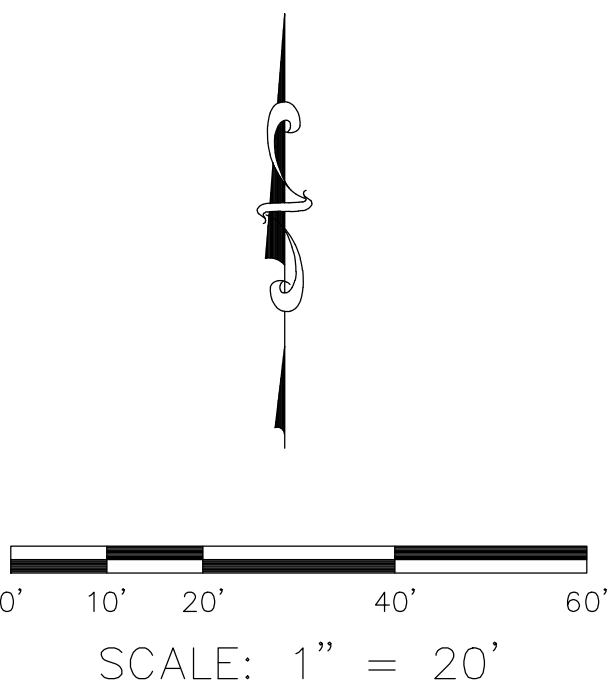
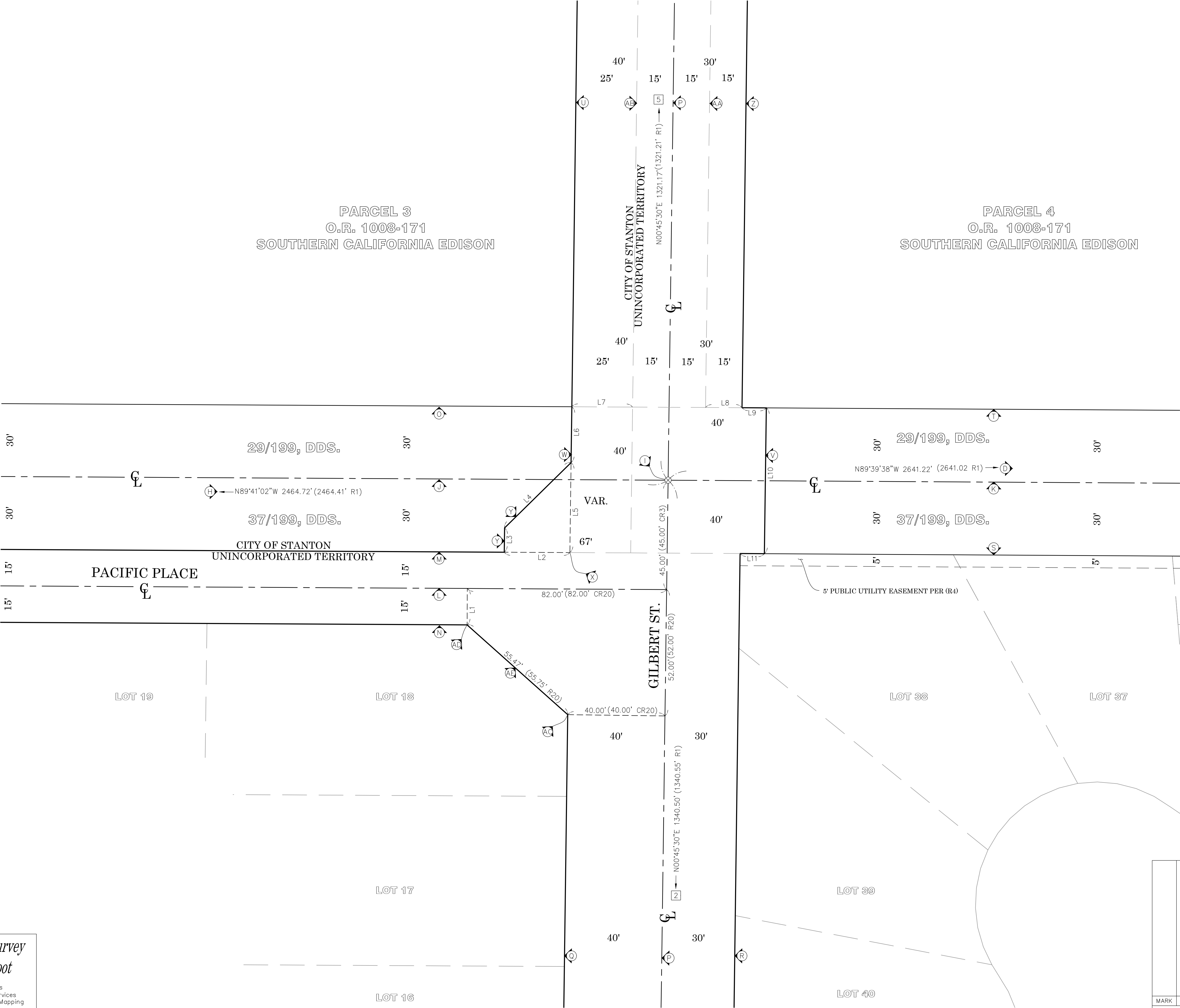


			COUNTY OF ORANGE OC PUBLIC WORKS OC SURVEY/FIELD SERVICES/BOUNDARY ANALYSIS & MAPPING		
			GILBERT STREET STREET IMPROVEMENTS PROJECT		
			BOUNDARY MAP		
			PROJECT LIMITS: FROM 300' S'LY AND N'LY THE INTERSECTION OF GILBERT ST. AND THE INTERSECTION OF GILBERT ST. AND THE SOUTHERN PACIFIC RAILROAD.		
			DATE OF SURVEY: 07/18/2021	BY: T. LOFGREEN AND PARTY	SHEET NO.  3 of 6
MARK	DATE	ITEM	MAPPING	BY: H. AFTIM	
			OFFICE CHECK	BY: M. KUBISTY, PLS	
			FIELD CHECK	BY: T. LOFGREEN AND PARTY	
			SCALE: 1" = 20'	W.O. #EQ16010S	
REVISIONS			FILE #2021PW-PM0007		
			FILE: GILBERT_STREET_BOUNDARY_2021.DWG		

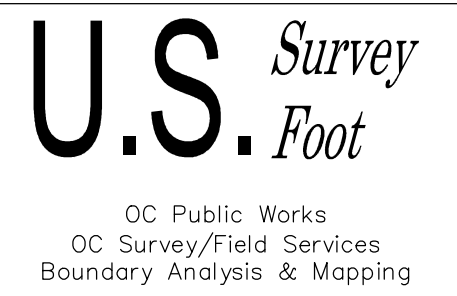


PARCEL 3  
O.R. 1008-171  
SOUTHERN CALIFORNIA EDISON

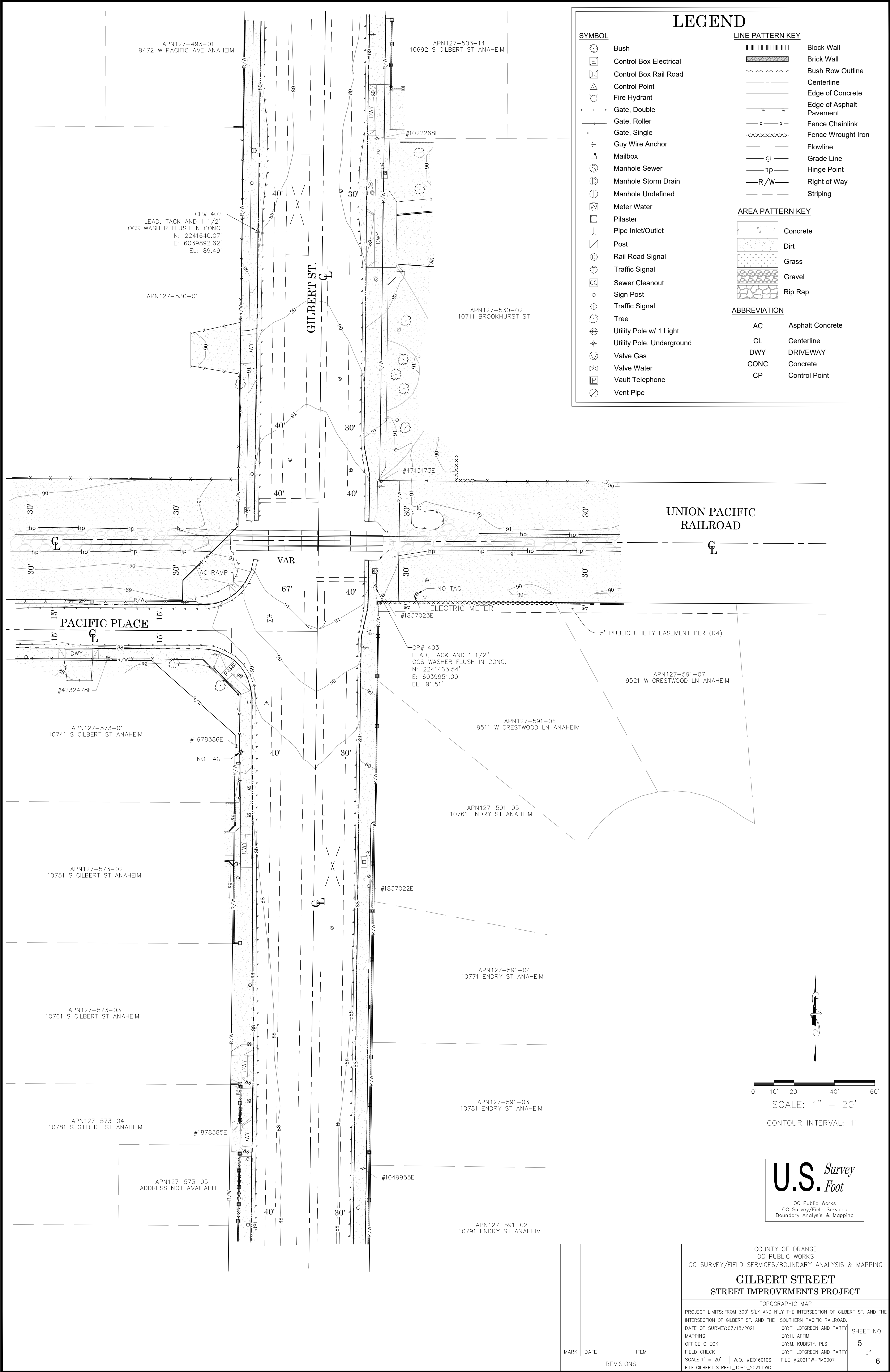
PARCEL 4  
O.R. 1008-171  
SOUTHERN CALIFORNIA EDISON



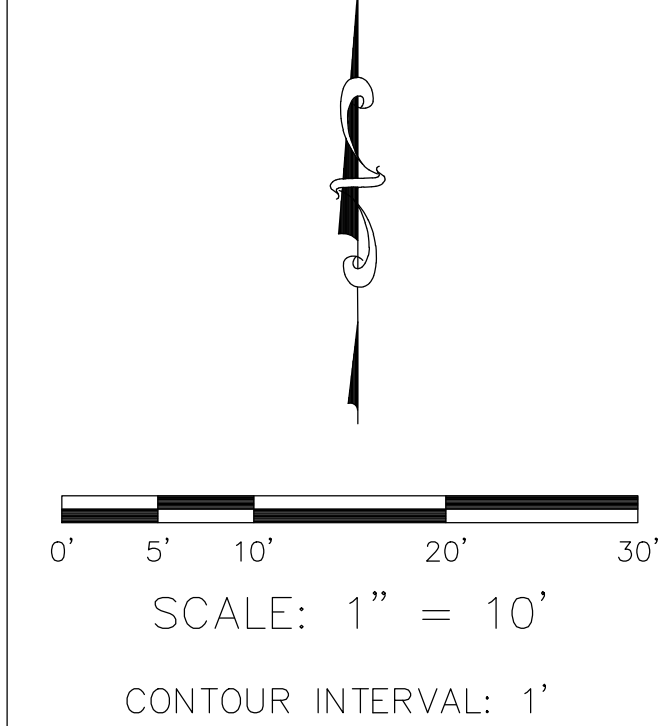
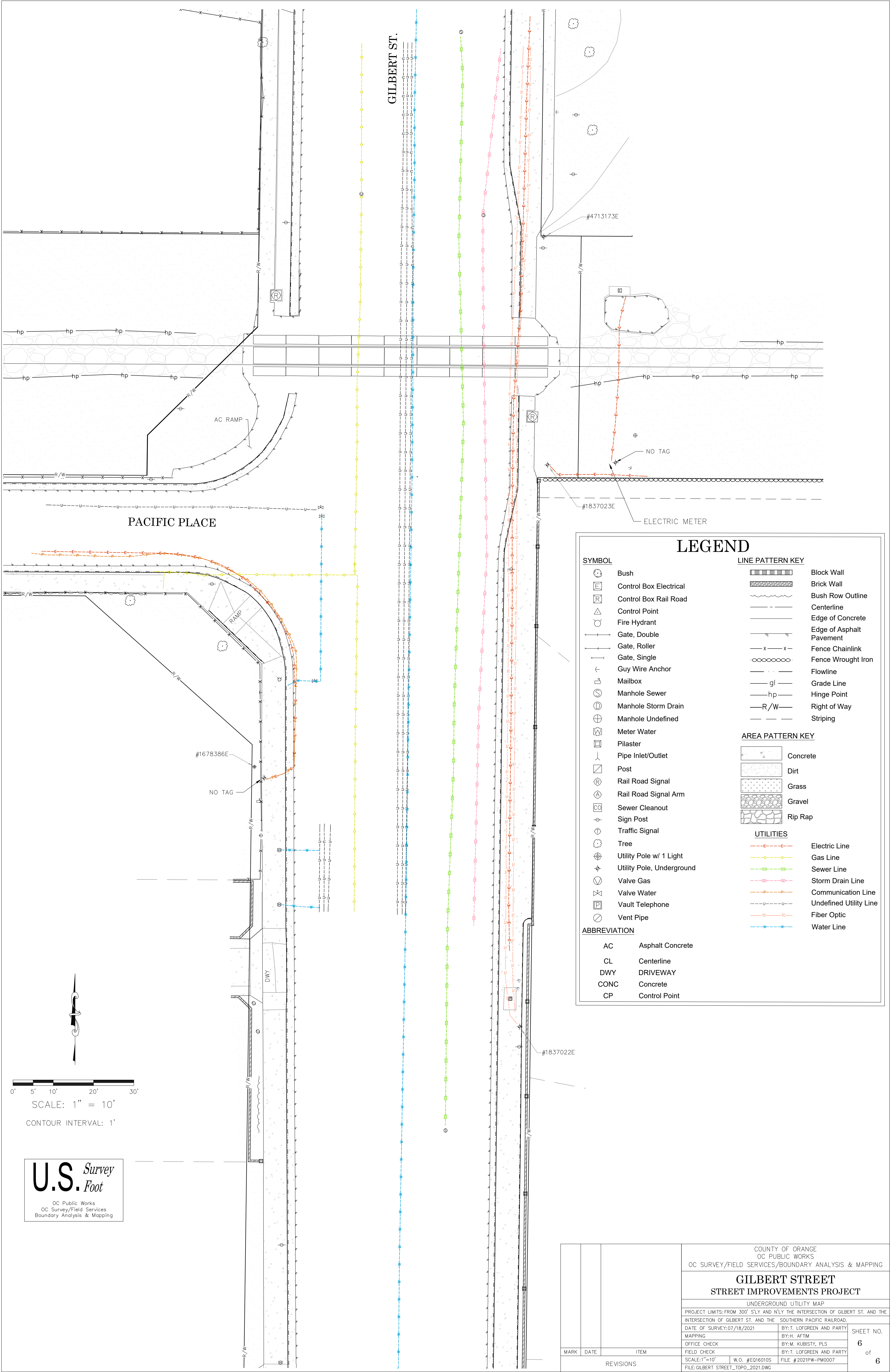
- LEGEND**
- FOUND MONUMENT AS NOTED
  - ⊗ S.F.N. - SEARCHED, NOTHING FOUND
  - CR CALC FROM RECORD MAP
  - R RECORD MAP
  - M MEASURED



			COUNTY OF ORANGE OC PUBLIC WORKS OC SURVEY/FIELD SERVICES/BOUNDARY ANALYSIS & MAPPING		
			GILBERT STREET STREET IMPROVEMENTS PROJECT		
			BOUNDARY MAP		
			PROJECT LIMITS: FROM 300' S'LY AND N'LY THE INTERSECTION OF GILBERT ST. AND THE PACIFIC PLACE TO 65' E'LY AND W'LY OF GILBERT ST. AND 100' E'LY AND W'LY THE INTERSECTION OF GILBERT ST. AND THE SOUTHERN PACIFIC RAILROAD.		
			DATE OF SURVEY: 07/18/2021	BY: T. LOFGREEN AND PARTY	SHEET NO.  4 of 6
			MAPPING	BY: H. AFTIM	
			OFFICE CHECK	BY: M. KUBISTY, PLS	
			FIELD CHECK	BY: T. LOFGREEN AND PARTY	
MARK	DATE	ITEM	SCALE: 1" = 20'	W.O. #EQ16010S	FILE #2021PW-PW0007
REVISIONS			FILE: GILBERT STREET_BOUNDARY_2021.DWG		







U.S. *Survey* Foot  
 OC Public Works  
 OC Survey/Field Services  
 Boundary Analysis & Mapping

### LEGEND

**SYMBOL**

- Bush
- Control Box Electrical
- Control Box Rail Road
- Control Point
- Fire Hydrant
- Gate, Double
- Gate, Roller
- Gate, Single
- Guy Wire Anchor
- Mailbox
- Manhole Sewer
- Manhole Storm Drain
- Manhole Undefined
- Meter Water
- Pilaster
- Pipe Inlet/Outlet
- Post
- Rail Road Signal
- Rail Road Signal Arm
- Sewer Cleanout
- Sign Post
- Traffic Signal
- Tree
- Utility Pole w/ 1 Light
- Utility Pole, Underground
- Valve Gas
- Valve Water
- Vault Telephone
- Vent Pipe

**ABBREVIATION**

- AC Asphalt Concrete
- CL Centerline
- DWY DRIVEWAY
- CONC Concrete
- CP Control Point

**LINE PATTERN KEY**

- Block Wall
- Brick Wall
- Bush Row Outline
- Centerline
- Edge of Concrete
- Edge of Asphalt Pavement
- Fence Chainlink
- Fence Wrought Iron
- Flowline
- Grade Line
- Hinge Point
- Right of Way
- Striping

**AREA PATTERN KEY**

- Concrete
- Dirt
- Grass
- Gravel
- Rip Rap

**UTILITIES**

- Electric Line
- Gas Line
- Sewer Line
- Storm Drain Line
- Communication Line
- Undefined Utility Line
- Fiber Optic
- Water Line

			COUNTY OF ORANGE OC PUBLIC WORKS OC SURVEY/FIELD SERVICES/BOUNDARY ANALYSIS & MAPPING			
			GILBERT STREET STREET IMPROVEMENTS PROJECT			
			UNDERGROUND UTILITY MAP			
			PROJECT LIMITS: FROM 300' SLY AND NLY THE INTERSECTION OF GILBERT ST. AND THE INTERSECTION OF GILBERT ST. AND THE SOUTHERN PACIFIC RAILROAD.			
			DATE OF SURVEY: 07/18/2021		BY: T. LOFGREEN AND PARTY	
			MAPPING		BY: H. AFTIM	
			OFFICE CHECK		BY: M. KUBISTY, PLS	
			FIELD CHECK		BY: T. LOFGREEN AND PARTY	
MARK	DATE	ITEM	SCALE: 1"=10'		W.O. #E016010S	SHEET NO.  6 of  6
REVISIONS			FILE: GILBERT STREET_TOPO_2021.DWG		FILE # 2021PW-PM0007	