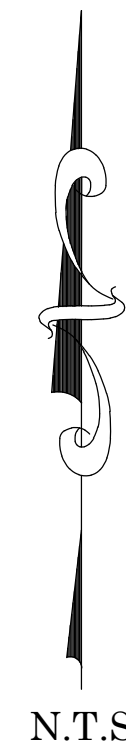
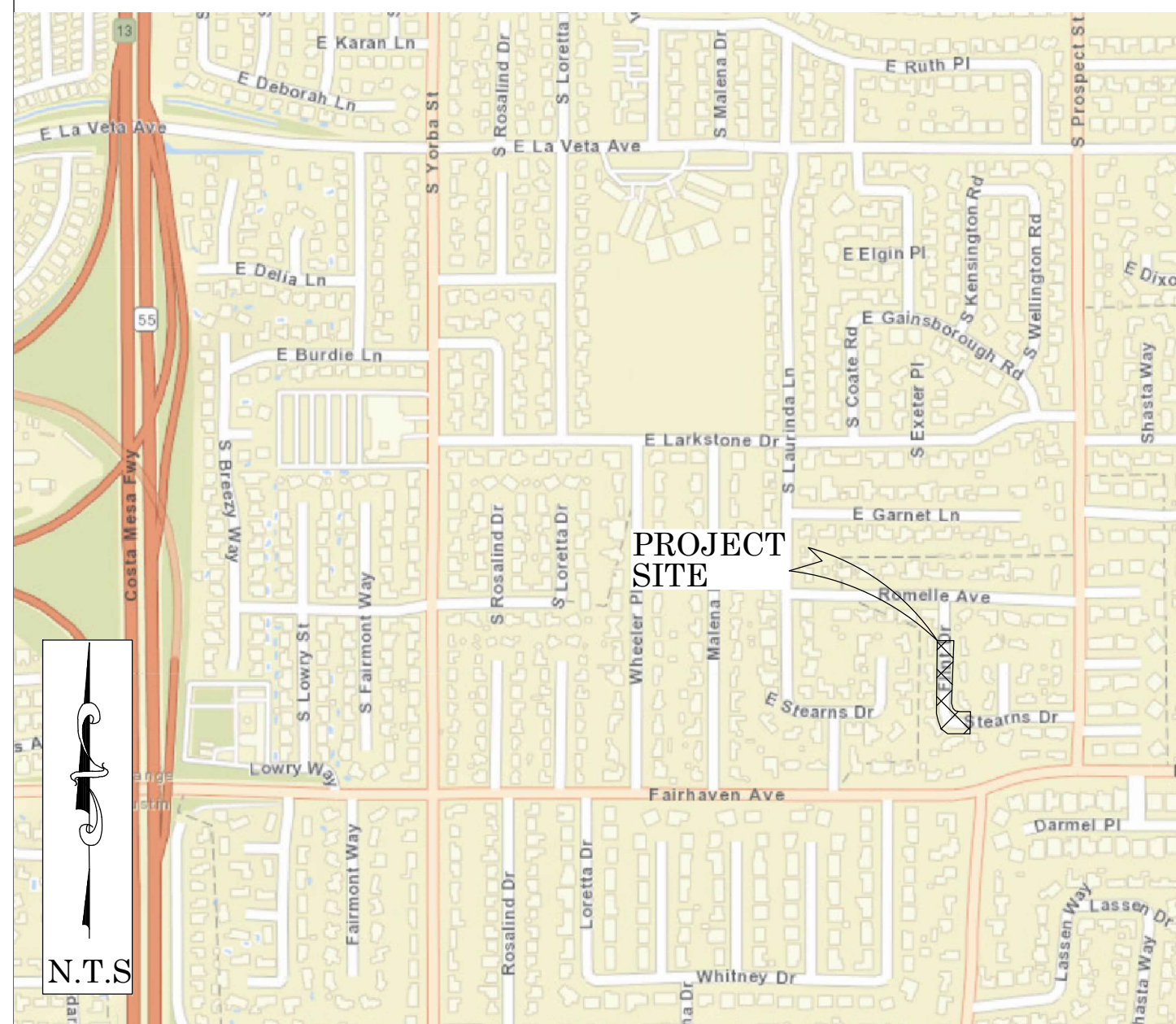




OC PUBLIC WORKS DEPARTMENT
JAMES TREADAWAY, DIRECTOR OF PUBLIC WORKS
KEVIN HILLS, COUNTY SURVEYOR
FLINT DRIVE
ROAD MAINTENANCE



LOCATION MAP



SENIOR LAND SURVEYOR'S CERTIFICATE:

THIS MAP CORRECTLY REPRESENTS A SURVEY MADE BY ME OR UNDER MY DIRECTION IN CONFORMANCE WITH REQUIREMENTS OF THE PROFESSIONAL LAND SURVEYOR'S ACT; THIS 26 DAY OF MARCH, 2021.

ELLIOTT MEDINA, PLS. SENIOR LAND SURVEYOR



DEPUTY COUNTY SURVEYOR'S STATEMENT:

THIS MAP HAS BEEN EXAMINED IN ACCORDANCE WITH THE PROFESSIONAL LAND SURVEYOR'S ACT; THIS 26 DAY OF MARCH, 2021.

WADE WEAVER, PLS. DEPUTY COUNTY SURVEYOR



BASIS OF BEARINGS

THE BASIS OF BEARINGS FOR THIS SURVEY IS BASED ON THE CALIFORNIA COORDINATE SYSTEM (CCS83), ZONE VI, NAD 83, OCS (2017.50) EPOCH ADJUSTMENT, AS DETERMINED LOCALLY BY A LINE BETWEEN CONTINUOUS GLOBAL POSITIONING STATIONS CGPS STATIONS (SACY) AND (OECC) BEING NORTH 80°43'39\"/>

HORIZONTAL DATUM

COORDINATES SHOWN ARE BASED ON THE CALIFORNIA COORDINATE SYSTEM (CCS83), ZONE VI, NAD 83, OCS (2017.50) EPOCH ADJUSTMENT.
ALL DISTANCES SHOWN ARE GRID, UNLESS OTHERWISE NOTED. TO OBTAIN GROUND DISTANCES MULTIPLY GRID BY A COMBINED FACTOR OF 1.00002152.
COMBINATION FACTOR WAS HELD AT: #6719
N: 2229362.24' E: 6085071.41' ELEVATION= 223.72'

VERTICAL DATUM

O.C.S. BM 3C-22-71 ELEV. = 174.752' YEAR LEVELED: 2015
NAVD 1988 (O.C.S. 1995 ADJUSTMENT)
DESCRIPTION: MONUMENT IS SET IN KNOWN SUBSIDENCE ZONE AND MAY NOT FIT ADJACENT BENCHMARKS. DESCRIBED BY OCS 2001 - FOUND 3 3/4\"/>

NOTES

THE SURVEY INFORMATION SHOWN HEREON IS TO BE USED FOR TOPOGRAPHIC RELATIONSHIPS ONLY AND IS NOT INTENDED FOR LAND ACQUISITION OR BOUNDARY PURPOSES.
PARCELS SHOWN WITHOUT BEARING AND DISTANCES ARE FOR GRAPHICAL PURPOSES.

SHEET INDEX

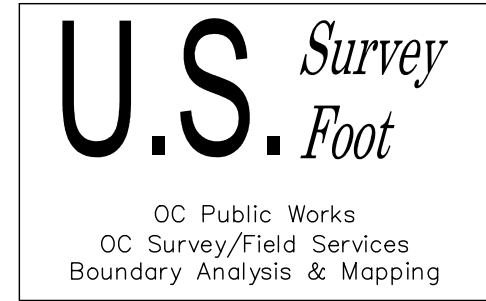
SHEET	NO.	DESCRIPTION
SHEET 1	1	TITLE SHEET
SHEET 2	2	CENTERLINE ESTABLISHMENT
SHEET 3	3	TOPOGRAPHIC MAP
SHEET 4	4	PROFILE SHEET

PURPOSE OF SURVEY

THE PURPOSE OF THE SURVEY IS TO PROVIDE A TOPOGRAPHIC SURVEY ALONG THIS PORTION OF ROAD TO IDENTIFY LOW AND HIGH GRADE POINTS WITHIN ROAD CURB AND GUTTER FLOW LINE.

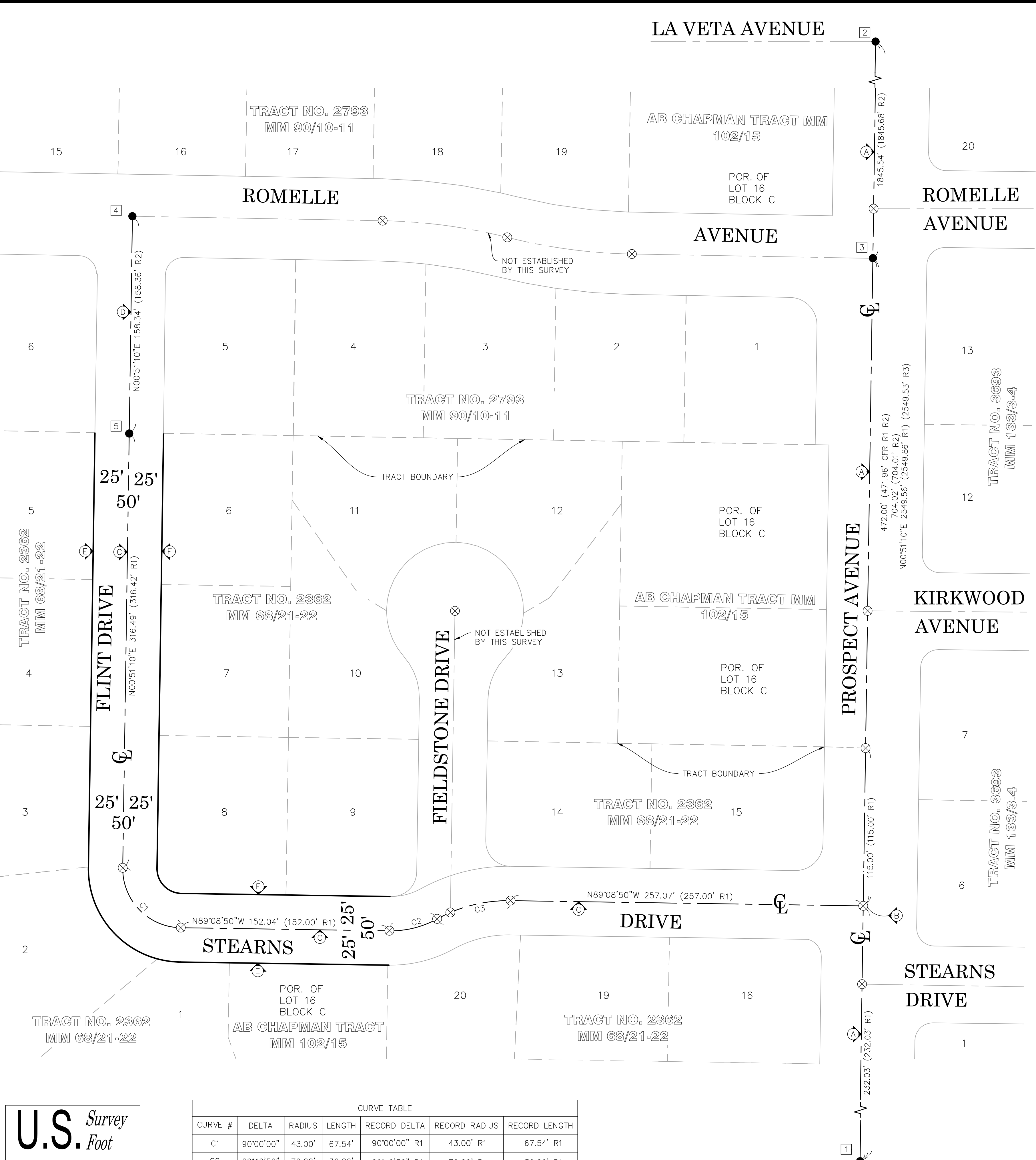
TOPOGRAPHIC MAPPING PROJECT

			COUNTY OF ORANGE OC PUBLIC WORKS OC SURVEY/FIELD SERVICES/BOUNDARY ANALYSIS & MAPPING				
			FLINT DRIVE ROAD MAINTENANCE				
			TITLE SHEET				
			PROJECT LIMITS: FROM 12881 FLINT DR TO 17882 STEARNS				
			DATE OF SURVEY: 01/26/2021		BY: P. MAGUIRE & CREW		SHEET NO. 1 of 4
			MAPPING		BY: I. ISLAS		
			OFFICE CHECK		BY: E. MEDINA, PLS		
			FIELD CHECK		BY: P. MAGUIRE & CREW		
			SCALE: N.T.S.		W.O. #ER19312		
			FILE: FLINT_DR_TOPO_2021.DWG				
REVISIONS							
FILE: #1920PW-OP0022							



CURVE TABLE						
CURVE #	DELTA	RADIUS	LENGTH	RECORD DELTA	RECORD RADIUS	RECORD LENGTH
C1	90°00'00"	43.00'	67.54'	90°00'00" R1	43.00' R1	67.54' R1
C2	29°40'56"	70.00'	36.26'	29°40'56" R1	70.00' R1	36.26' R1
C3	29°40'56"	107.71'	55.80'	29°40'56" R1	107.71' R1	55.80' R1

FAIRHAVEN AVENUE



MONUMENT NOTES

- [1] FOUND 2 1/4" ALUMINUM CAP STAMPED "OCS 10-73", PER (R3), DOWN 1.75' IN O.C.S. WELL MONUMENT, ACCEPTED AS THE CENTERLINE INTERSECTION FAIRHAVEN AVENUE AND PROSPECT AVENUE.
- [2] FOUND GEAR SPIKE AND 1 1/2" WASHER, STAMPED "LS 7052" PER (R5), FLUSH IN A.C. ACCEPTED AS THE CENTERLINE INTERSECTION LA VETA AVENUE AND PROSPECT AVENUE.
- [3] FOUND GEAR SPIKE AND 1 1/2" WASHER, STAMPED "LS 7052",PER (R4), FLUSH IN A.C. ACCEPTED AS THE CENTERLINE INTERSECTION OF ROMELLE AVENUE AND PROSPECT AVENUE.
- [4] FOUND SPIKE AND 1 1/4" TIN, PER (R2), DOWN 0.2' IN A.C., ACCEPTED AS CENTERLINE INTERSECTION OF ROMELLE AVENUE AND FLINT DRIVE
- [5] FOUND SPIKE AND 1 1/4" TIN PER (R2), DOWN 0.3' IN A.C., ACCEPTED AS THE TRACT BOUNDARY LINE.

ESTABLISHMENT NOTES

- [A] ESTABLISHED THE CENTERLINE OF PROSPECT AVENUE BY HOLDING A LINE BETWEEN MONUMENTS [1] AND [2]
- [B] ESTABLISHED THE CENTERLINE INTERSECTION OF PROSPECT AVENUE AND STEARNS DRIVE BY HOLDING RECORD DISTANCE OF 232.03' PER (R1) ALONG ESTABLISHMENT NOTE [A]
- [C] ESTABLISHED THE CENTERLINE OF FLINT DRIVE AND STEARNS DRIVE BY A LEAST SQUARES ADJUSTMENT BETWEEN MONUMENT NOTE [5] AND ESTABLISHMENT NOTE [B]
- [D] ESTABLISHED PORTION OF FLINT DRIVE BY HOLDING A LINE BETWEEN MONUMENT NOTES [4] AND [5] PARALLEL WITH ESTABLISHMENT NOTE [A] PER (R2)
- [E] ESTABLISHED THE W'LY AND S'LY RIGHT OF WAY OF FLINT DRIVE AND STEARNS DRIVE BY HOLD A LINE PARALLEL WITH, AND A RECORD DISTANCE OF 25' PER (R1) FROM LINE ESTABLISHMENT NOTE [C]
- [F] ESTABLISHED THE E'LY AND NW'LY RIGHT OF WAY OF FLINT DRIVE AND STEARNS DRIVE BY HOLD A LINE PARALLEL WITH, AND A RECORD DISTANCE OF 25' PER (R1) FROM LINE ESTABLISHMENT NOTE [C]

NOTES

STREET R/W SHOWN IN BOLD ESTABLISHED BY SURVEY.
THE LOT LINES ARE FOR GRAPHICAL PRESENTATION ONLY.

BASIS OF BEARINGS

THE BASIS OF BEARINGS FOR THIS SURVEY IS BASED ON THE CALIFORNIA COORDINATE SYSTEM (CCS83), ZONE VI, NAD 83, OCS (2017.50) EPOCH ADJUSTMENT, AS DETERMINED LOCALLY BY A LINE BETWEEN CONTINUOUS GLOBAL POSITIONING STATIONS CGPS STATIONS (SACY) AND (OEOC) BEING NORTH 80°43'39" EAST AS DERIVED FROM THE COORDINATES PUBLISHED BY THE CALIFORNIA SPATIAL REFERENCE CENTER (CSRC) ALONG WITH DATA SHEETS ON FILE IN THE OFFICE OF THE ORANGE COUNTY SURVEYOR.

HORIZONTAL DATUM

COORDINATES SHOWN ARE BASED ON THE CALIFORNIA COORDINATE SYSTEM (CCS83), ZONE VI, NAD 83, OCS (2017.50) EPOCH ADJUSTMENT.

ALL DISTANCES SHOWN ARE GRID, UNLESS OTHERWISE NOTED. TO OBTAIN GROUND DISTANCE MULTIPLY A GRID DISTANCE BY 1.0002152.

COMBINATION FACTOR WAS HELD AT POINT NUMBER 6719 N:2229362.24', E:6085071.41', ELEVATION= 223.72'

RECORD DISTANCES SHOWN HEREON ARE AS THEY APPEAR ON THE DOCUMENT OF RECORD. DISTANCES MAY BE EITHER GRID OR GROUND, AS PER SAID RECORD.

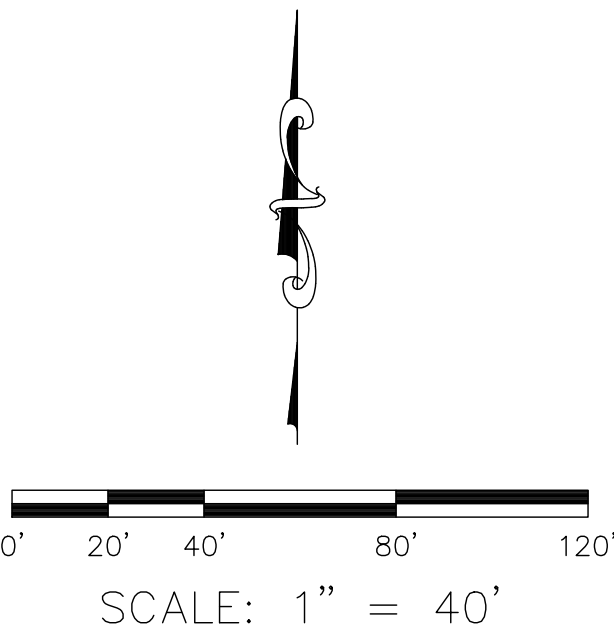
ALL DISTANCES ARE BASED ON THE U.S. SURVEY FOOT.

REFERENCES

- (R1) = TRACT NO. 2362 M.M. 68/21-22
(R2) = TRACT NO. 2793 M.M. 90/10-11
(R3) = ALIGNMENT NOTE A/4-9/1021-1032
(R4) = CORNER RECORD C.R. 2014-0239B
(R5) = CORNER RECORD C.R. 2006-1169B
(R6) = AB CHAMPMAN TRACT M.M. 102/15
(R7) = TRACT 3693 MM 133/3-4

LEGEND

- FOUND MONUMENT AS NOTED
⊗ SEARCHED FOUND NOTHING
CFR CALCULATED FROM RECORD



MARK	DATE	ITEM	COUNTY OF ORANGE OC PUBLIC WORKS OC SURVEY/FIELD SERVICES/BOUNDARY ANALYSIS & MAPPING				
			FLINT DRIVE ROAD MAINTENANCE				
			CENTERLINE ESTABLISHMENT				
			PROJECT LIMITS: FROM 12881 FLINT DR. TO 17882 STEARNS DR.				
			DATE OF SURVEY:01/23/2021		BY:P. MAGUIRE & CREW		SHEET NO. 2 of 4
			MAPPING		BY:R. BELTRAN		
			OFFICE CHECK		BY:E. MEDINA, PLS		
			FIELD CHECK		BY:P. MAGUIRE & CREW		
			SCALE:1" = 40'		W.O. #ER19312		
			FILE #1920PW-OP0022				
REVISIONS				FILE:12931 FLINT DR_BOUNDARY_2021.DWG			

BEGIN CONSTRUCTION
ALIGNMENT PER
THIS SURVEY AT
CONC. FLOWLINE
STA: 10+00
EL: 215.94 FL
(SEE PROFILE SHEET 4)

LIMITS OF SURVEY

APN 094-083-29
12881 FLINT DR

APN 094-084-16
12882 FLINT DR

PP#1603664E

FLINT DR.

PIPE OUTLET
INV EL = 215.41'
4" Ø PVC

CL

APN 094-083-30
12901 FLINT DR

APN 094-084-15
12902 FLINT DR

APN 094-084-14
12911 FIELDSTONE DR

LIMITS OF SURVEY

STEARNS DR.

APN 094-083-31
12931 FLINT DR

CP# 602
SET MAG & 1-1/2
WASHER STAMPED
OCS ON TC
N: 2228861.64'
E: 6084542.11'
EL: 215.02'

APN 094-083-32
17882 STEARNS DR

APN 094-083-33
17921 E FAIRHAVEN AVE

END CONSTRUCTION
ALIGNMENT PER
THIS SURVEY AT
CONC. FLOWLINE
STA: 13+61.66
EL: 214.73 FL
(SEE PROFILE SHEET 4)

SYMBOL

- Control Point
- Fire Hydrant
- Mailbox
- Meter Water
- Pipe Inlet/Outlet
- Sign Post
- Tree
- Utility Pole, Underground
- Valve Water

LEGEND

AREA PATTERN KEY

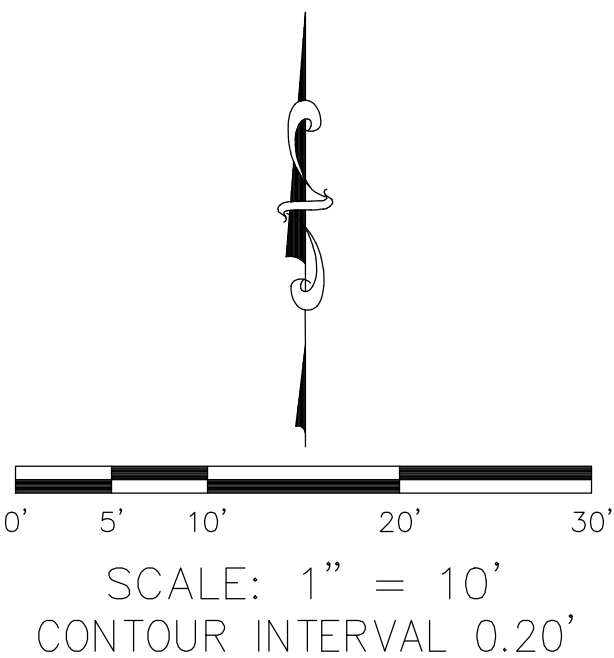
- Concrete
- Brick
- Dirt
- Grass
- Gravel

LINE PATTERN KEY

- Bush Row Outline
- Centerline
- Edge of Concrete
- Edge of Asphalt Pavement
- Fence Wood
- Flowline
- Right of Way
- Stucco Wall

ABBREVIATION

- CL Centerline
- CLR Clearance
- CONC Concrete
- CP Control Point
- EL Elevation
- ENC Encroachment
- FL Flowline
- INV Invert
- PP Power Pole
- SDMH Storm Drain Manhole
- TC Top of Curb



U.S. Survey
Foot

OC Public Works
OC Survey/Field Services
Boundary Analysis & Mapping

COUNTY OF ORANGE
OC PUBLIC WORKS
OC SURVEY/FIELD SERVICES/BOUNDARY ANALYSIS & MAPPING

FLINT DRIVE ROAD MAINTENANCE

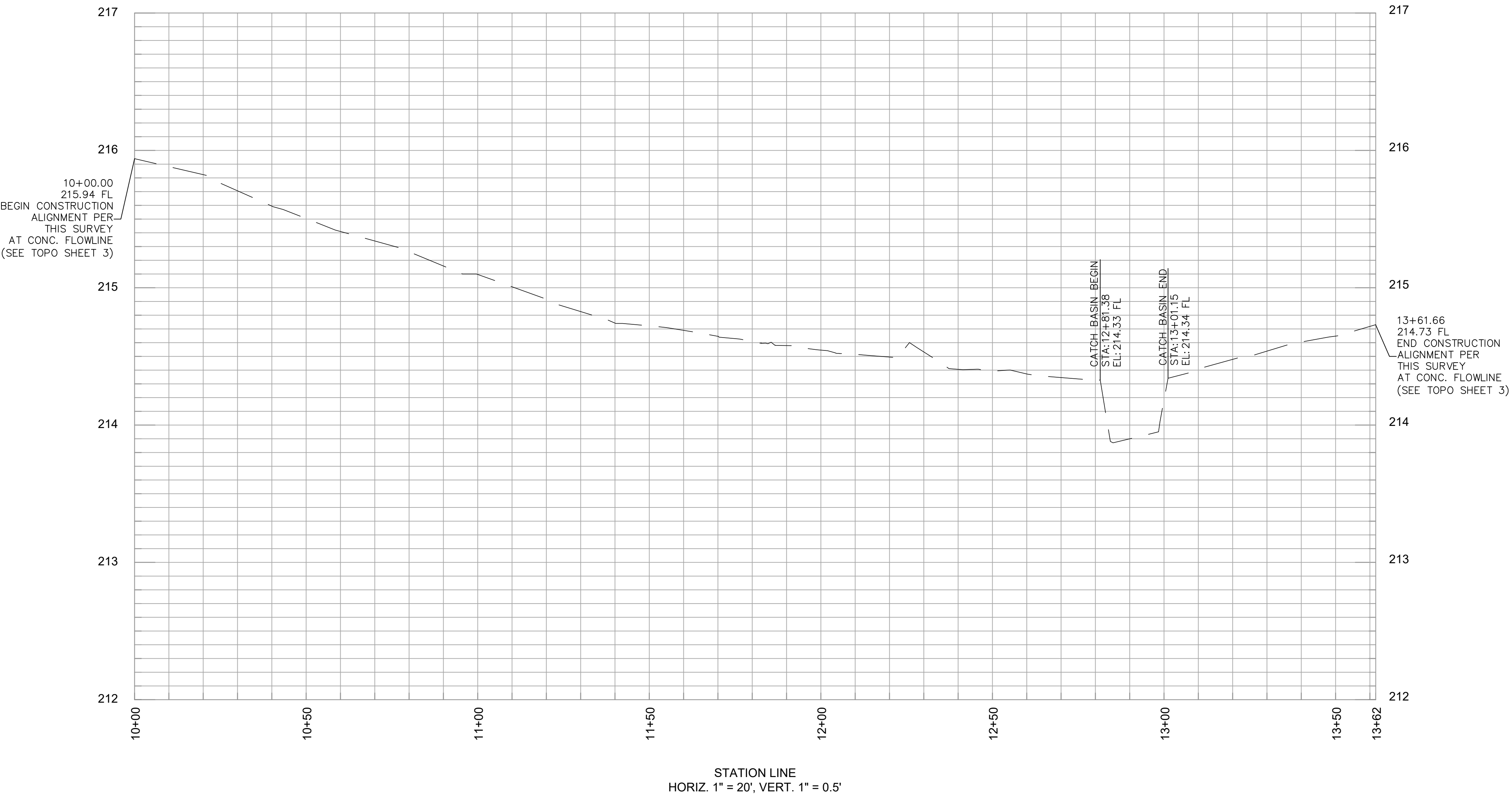
TOPOGRAPHIC MAP
PROJECT LIMITS: FROM 12881 FLINT DR TO 17882 STEARNS

DATE OF SURVEY: 01/26/2021
MAPPING
OFFICE CHECK
FIELD CHECK
SCALE: 1"=10'
W.O. #ER19312
FILE: FLINT_DR_TOPO_2021.DWG

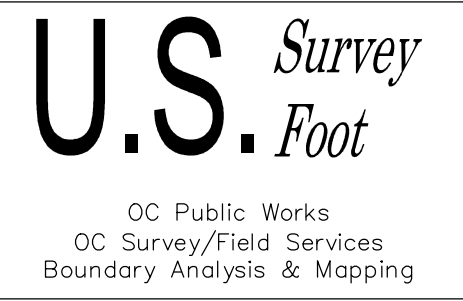
BY: P. MAGUIRE & CREW
BY: L. ISLAS
BY: E. MEDINA, PLS
BY: P. MAGUIRE & CREW
FILE #1920PW-OP0022

SHEET NO.
3
of
4

PROFILE OF THE EXISTING W'LY & S'LY CONCRETE FLOWLINE OF FLINT DRIVE



NOTE: THE ALIGNMENT FOR THIS PROFILE WAS DEVELOPED HOLDING A STATION OF 10+00 AT THE NW'LY END OF THE EXISTING CONCRETE FLOWLINE OF THE W'LY SIDE OF FLINT DR. AND INCREASING S'LY AND E'LY AS SHOWN ON SHEET 3



				COUNTY OF ORANGE OC PUBLIC WORKS OC SURVEY/FIELD SERVICES/BOUNDARY ANALYSIS & MAPPING	
				FLINT DRIVE ROAD MAINTENANCE	
				TOPOGRAPHIC MAP	
		PROJECT LIMITS: FROM 12881 FLINT DR TO 17882 STEARNS			
		DATE OF SURVEY: 01/26/2021		BY: P. MAGUIRE & CREW	
		MAPPING		BY: L. ISLAS	
		OFFICE CHECK		BY: E. MEDINA, PLS	
		FIELD CHECK		BY: P. MAGUIRE & CREW	
		SCALE: 1"=20'		W.O. #ER19312	
		FILE: FLINT_DR_TOPO_2021.DWG		FILE #1920PW-OP0022	
MARK		DATE		ITEM	
				REVISIONS	