

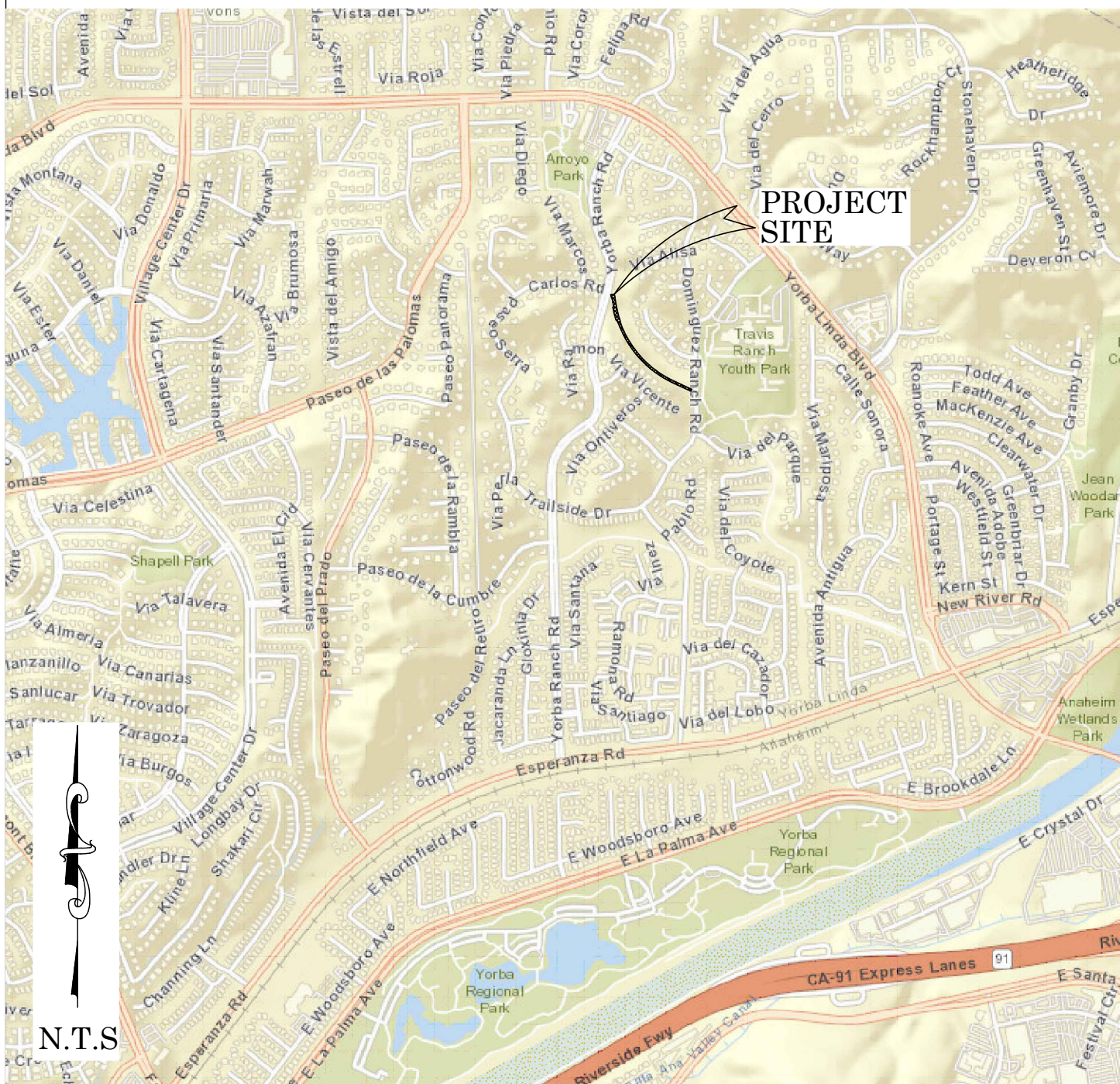


OC PUBLIC WORKS DEPARTMENT
JAMES TREADAWAY, DIRECTOR OF PUBLIC WORKS
KEVIN HILLS, COUNTY SURVEYOR
ESPERANZA CHANNEL (E06)

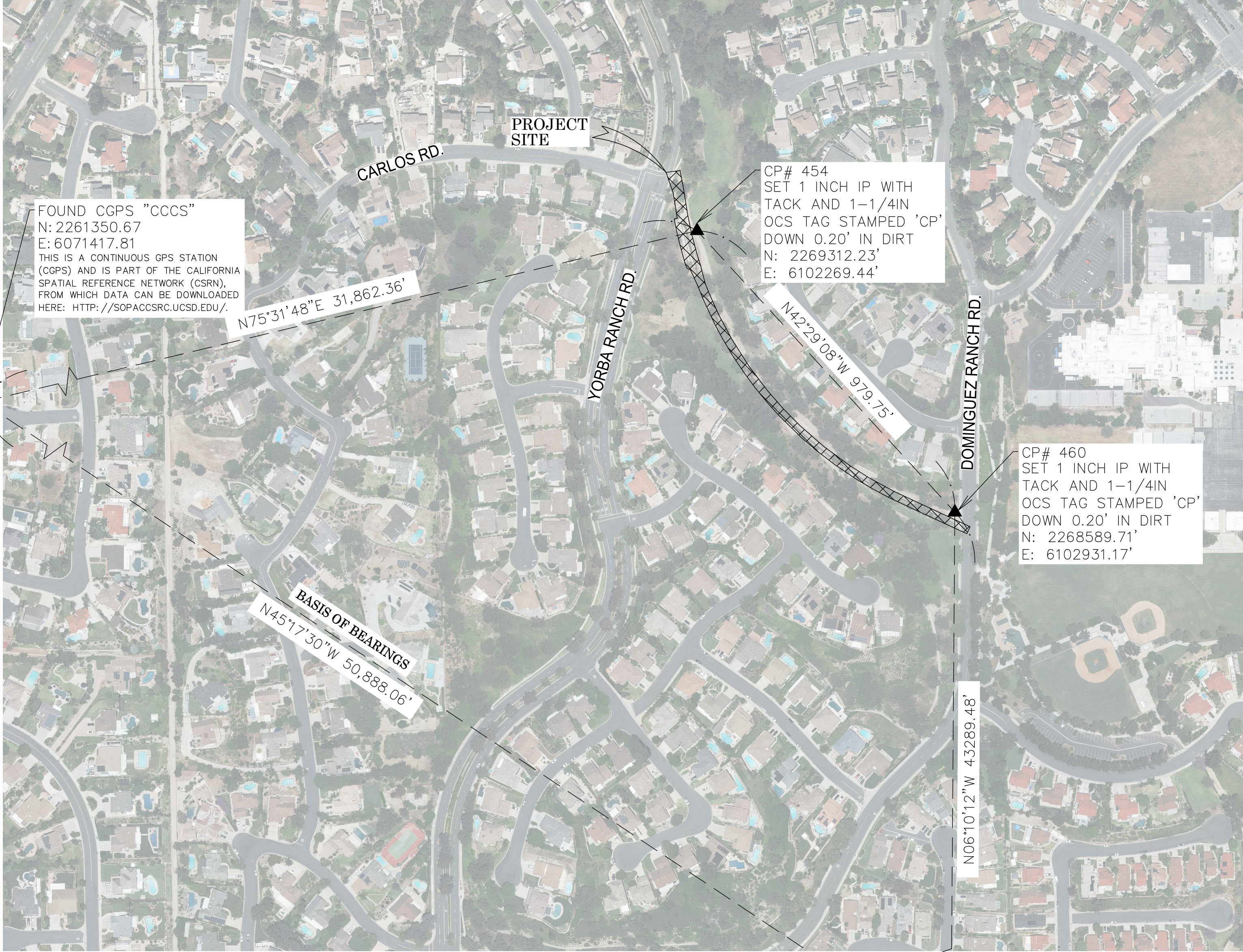


WALL MONITORING SURVEY

LOCATION MAP



N.T.S.



BASIS OF BEARINGS

THE BASIS OF BEARINGS FOR THIS SURVEY IS BASED ON THE CALIFORNIA COORDINATE SYSTEM (CCS83), ZONE VI, NAD 83, OCS (2017.50) EPOCH ADJUSTMENT, AS DETERMINED LOCALLY BY A LINE BETWEEN CONTINUOUS GLOBAL POSITIONING STATIONS CGPS STATIONS (OECC) AND (CCCS) BEING NORTH 45°17'30" WEST AS DERIVED FROM THE COORDINATES PUBLISHED BY THE CALIFORNIA SPATIAL REFERENCE CENTER (CSRC) ALONG WITH DATA SHEETS ON FILE IN THE OFFICE OF THE ORANGE COUNTY SURVEYOR.

HORIZONTAL DATUM

COORDINATES SHOWN ARE BASED ON THE CALIFORNIA COORDINATE SYSTEM (CCS83), ZONE VI, NAD 83, OCS (2017.50) EPOCH ADJUSTMENT.
ALL DISTANCES SHOWN ARE GRID, UNLESS OTHERWISE NOTED. TO OBTAIN GROUND DISTANCES MULTIPLY GRID BY A COMBINED FACTOR OF 1.00001767.
THIS COMBINATION FACTOR WAS HELD AT: CP# 454
N: 2269312.22 E: 6102269.45 EL: 491.16
ALL DISTANCES ARE BASED ON THE U.S. SURVEY FOOT.

VERTICAL DATUM

O.C.S. BM. 2A-52-06 ELEV. = 534.801' YEAR LEVELED: 2006
NAVD 1988 (O.C.S. 1995 ADJUSTMENT)
DESCRIPTION: FOUND 4" OCS ALUMINUM BENCHMARK DISK STAMPED "2A-52-06" SET IN THE NORTHEASTERLY CORNER OF A 4 FT. BY 8 FT. CONCRETE CATCH BASIN. MONUMENT IS LOCATED IN THE NORTHWESTERLY CORNER OF THE INTERSECTION OF YORBA LINDA BOULEVARD AND SAN ANTONIO 32 FT. WESTERLY OF THE CENTERLINE OF SAN ANTONIO AND 117 FT. NORTHERLY OF THE CENTERLINE OF YORBA LINDA BOULEVARD. MONUMENT IS SET LEVEL WITH THE SIDEWALK.

SHEET INDEX

SHEET NO.	DESCRIPTION
SHEET 1	TITLE SHEET
SHEETS 2-3	BOUNDARY MAP
SHEET 4	MONITORING STATIONS

BASIS OF STATIONING

THE BASIS OF STATIONING FOR THE ALIGNMENT SHOWN HEREON IS 52+93.86 HELD AT THE CENTERLINE INTERSECTION OF THE ESPERANZA CHANNEL (E06) PER R6 & DOMINGUEZ RANCH DR PER R6 & INCREASING NW'LY

PURPOSE OF SURVEY

THE PURPOSE OF THE SURVEY IS TO PROVIDE AN ALIGNMENT & RIGHT OF WAY ESTABLISHMENT FOR A CHANNEL WALL MONITORING PROJECT.

SENIOR LAND SURVEYOR'S CERTIFICATE:

THIS MAP CORRECTLY REPRESENTS A SURVEY MADE BY ME OR UNDER MY DIRECTION IN CONFORMANCE WITH REQUIREMENTS OF THE PROFESSIONAL LAND SURVEYOR'S ACT; THIS 19 DAY OF JULY, 2022.



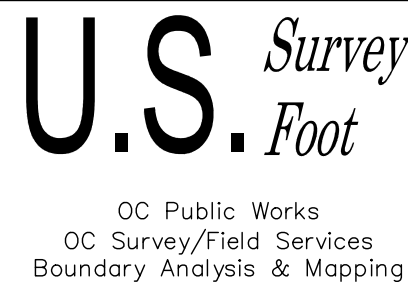
MICHAEL KUBISTY, PLS. SENIOR LAND SURVEYOR

DEPUTY COUNTY SURVEYOR'S STATEMENT:

THIS MAP HAS BEEN EXAMINED IN ACCORDANCE WITH THE PROFESSIONAL LAND SURVEYOR'S ACT; THIS 19 DAY OF JULY, 2022.



WADE WEAVER, PLS. DEPUTY COUNTY SURVEYOR



FOUND CGPS "OECC"
N: 2225550.98
E: 6107583.77
THIS IS A CONTINUOUS GPS STATION (CGPS) AND IS PART OF THE CALIFORNIA SPATIAL REFERENCE NETWORK (CSRN), FROM WHICH DATA CAN BE DOWNLOADED HERE: [HTTP://SOPACC SRC.UCSD.EDU/](http://sopaccsrc.ucsd.edu/).

				COUNTY OF ORANGE OC PUBLIC WORKS OC SURVEY/FIELD SERVICES/BOUNDARY ANALYSIS & MAPPING	
		ESPERANZA CHANNEL (E06) WALL MONITORING SURVEY			
		TITLE SHEET			
		PROJECT LIMITS: FROM DOMINGUEZ ROAD TO YORBA RANCH ROAD			
		DATE OF SURVEY: 05/16/2022		BY: T. LOFGREEN & CREW	
MAPPING		BY: T. LOFGREEN / J. ISLAS			
OFFICE CHECK		BY: E. MEDINA, PLS			
FIELD CHECK		BY: T. LOFGREEN			
MARK	DATE	ITEM	SCALE: N.T.S.	W.O. #EF38001	FILE #2122PW-OP0002
REVISIONS			FILE: ESPERANZA_CHANNEL_BOUNDARY_2022.DWG		

MONUMENT NOTES

- 1

FOUND PUNCHED SPIKE & WASHER STAMPED "LS 2921", FLUSH IN AC, PER (R2), ACCEPTED AS A CENTERLINE EC OF DOMINGUEZ RANCH ROAD OF (R2).
- 2

FOUND PUNCHED SPIKE & WASHER STAMPED "LS 2921", FLUSH IN AC, PER (R1), ACCEPTED AS POINT ON THE NE'LY PROLONGATION OF THE CENTERLINE OF DOMINGUEZ RANCH ROAD, N45°27'04"E 0.14 FEET FROM THE BC OF CENTERLINE DOMINGUEZ RANCH ROAD.
- 3

FOUND PUNCHED SPIKE & WASHER STAMPED "LS 2921", FLUSH IN AC, PER (R1), ACCEPTED AS POINT ON CURVE (POC) CENTERLINE DOMINGUEZ RANCH ROAD ON THE SOUTHERLY LINE OF (R1).
- 4

FOUND PUNCHED SPIKE & WASHER STAMPED "LS 2921", FLUSH IN AC, PER (R1), ACCEPTED AS POINT ON CENTERLINE DOMINGUEZ RANCH ROAD, N00°32'29"W 0.06 FEET FROM THE CENTERLINE EC DOMINGUEZ RANCH ROAD OF (R1).
- 5

FOUND PUNCHED SPIKE & WASHER STAMPED "LS 2921",FLUSH IN A.C., PER (R1), S89°27'31"E 0.13' FROM THE CENTERLINE INTERSECTION OF VIA BERNARDO & DOMINGUEZ RANCH ROAD OF (R1).
- 6

FOUND PUNCHED SPIKE & WASHER STAMPED "LS 2921", FLUSH IN AC, PER (R1), ACCEPTED AS POINT ON CENTERLINE DOMINGUEZ RANCH ROAD, S00°32'29"W 0.22 FEET FROM THE BC OF CENTERLINE DOMINGUEZ RANCH ROAD OF (R1).
- 7

FOUND PUNCHED SPIKE & WASHER STAMPED "LS 2921", FLUSH IN AC, PER (R1), ACCEPTED AS POINT ON CENTERLINE DOMINGUEZ RANCH ROAD, S08°36'13"W 0.41 FEET FROM THE CENTERLINE EC OF DOMINGUEZ RANCH ROAD OF (R1).
- 8

FOUND FOUR LEAD AND TACKS ON TOP OF CURB, ACCEPTED AS TIES PER (R1).
- 9

FOUND 1 INCH IRON PIPE WITH PLASTIC CAP STAMPED "LS 2921", DOWN 0.40 FEET IN DIRT, PER (R1), ACCEPTED AS THE SW'LY CORNER OF LOT 1 OF (R1)
- 10

FOUND 1 INCH IRON PIPE WITH PLASTIC CAP STAMPED "LS 2921", DOWN 1.30 FEET IN DIRT, PER (R1), ACCEPTED AS A POINT ON THE S'LY LINE OF LOT 1 OF (R1), S89°28'03"E 0.21 FEET FROM THE SE'LY CORNER OF LOT 1 OF (R1).
- 11

FOUND 1 INCH IRON PIPE WITH TACK AND 3/4" TAG STAMPED "LS 2921", DOWN 0.20 FEET IN DIRT, PER (R1), ACCEPTED AS THE N'LY MOST CORNER OF LOT 36 OF (R2).
- 12

FOUND 2 INCH IRON PIPE WITH TACK AND 3/4" TAG STAMPED "LS 2921" DOWN 0.80 FEET IN DIRT ACCEPTED AS POINT ON THE NE'LY LINE OF LOT 36 OF (R2), S48°19'44"E 0.14 FEET FROM THE NE'LY MOST CORNER OF LOT 36 OF (R2).
- 13

FOUND LEAD, TACK AND 3/4"TAG STAMPED "LS 2921", PER (R2), FLUSH IN CONCRETE, ACCEPTED AS CENTERLINE EC OF YORBA RANCH ROAD OF (R2).
- 14

FOUND 2 INCH IRON PIPE AND 3/4" TAG STAMPED "LS 2921", DOWN 1.00 FEET IN DIRT, PER (R4), ACCEPTED AS AS POINT ON CENTERLINE BC OF YORBA RANCH ROAD
- 15

FOUND 2 INCH IRON PIPE AND 3/4" TAG STAMPED "LS 2921", DOWN 1.00 FEET IN DIRT, PER (R4), N51°06'10"E 0.19 FEET FROM THE CENTERLINE EC OF YORBA RANCH ROAD OF (R1).
- 16

FOUND PUNCHED SPIKE & WASHER STAMPED "LS 2921", FLUSH IN AC, PER (R4), ACCEPTED AS A CENTERLINE BC OF CARLOS ROAD OF (R4).
- 17

FOUND 1 INCH IRON PIPE WITH TACK AND 3/4" TAG STAMPED "LS 2921", DOWN 0.30 FEET IN DIRT, PER (R1), N85°24'53"E 0.35 FEET FROM THE EC OF THE W'LY RIGHT OF WAY YORBA RANCH ROAD OF (R4).
- 18

FOUND 2 INCH IRON PIPE AND 3/4" TAG STAMPED "LS 2921", DOWN 0.40 FEET IN DIRT, PER (R4), ACCEPTED AS CENTERLINE YORBA RANCH ROAD, S23°07'35"E 0.16' FEET FROM THE CENTERLINE BC OF YORBA RANCH ROAD OF (R4).
- 19

FOUND 2 INCH IRON PIPE AND 3/4" TAG STAMPED "LS 2921", DOWN 0.40 FEET IN DIRT, PER (R4), ACCEPTED AS CENTERLINE BC OF YORBA RANCH ROAD OF (R4).
- 20

FOUND 2 INCH IRON PIPE AND 3/4" TAG STAMPED "LS 2921", DOWN 0.40 FEET IN DIRT, PER (R4), N21°56'46"E 0.05 FEET FROM THE BC OF THE E'LY RIGHT OF WAY OF YORBA RANCH ROAD OF (R4).
- 21

FOUND 2 INCH IRON PIPE AND 3/4" TAG STAMPED "LS 2921", DOWN 0.60 FEET IN DIRT, PER (R1), N32°47'51"E 0.04 FEET FROM THE MOST N'LY CORNER OF LOT 42 OF (R1).

REFERENCES

- (R1) = TRACT NO. 10265, MM 434/14–17
- (R2) = TRACT NO. 9957, MM 424/39–43
- (R3) = EASEMENT DEED, O.R. 13915/747
- (R4) = TRACT NO. 10266, MM 434/44–46
- (R5) = CL TIES CITY OF YORBA LINDA TRACT NO. 10266
- (R6) = COUNTY OF ORANGE IMPROVEMENT PLAN E06–701–3

BASIS OF BEARINGS

THE BASIS OF BEARINGS FOR THIS SURVEY IS BASED ON THE CRTN, AS DETERMINED LOCALLY BY A LINE BETWEEN CONTINUOUS GLOBAL POSITIONING STATIONS OE0C AND CCCS BEING NORTH 45°17'29.78" WEST AS DERIVED FROM THE COORDINATES PUBLISHED BY THE CALIFORNIA SPATIAL REFERENCE CENTER (CSRC) ALONG WITH DATA SHEETS ON FILE IN THE OFFICE OF THE ORANGE COUNTY SURVEYOR.

HORIZONTAL DATUM

COORDINATES SHOWN ARE BASED ON THE CALIFORNIA COORDINATE SYSTEM (CCSB3), ZONE VI, NAD 83, OCS (2017.50) EPOCH ADJUSTMENT.

ALL DISTANCES SHOWN ARE GRID, UNLESS OTHERWISE NOTED, TO OBTAIN GROUND DISTANCE MULTIPLY A GRID DISTANCE BY 1.00001767.

COMBINATION FACTOR WAS HELD AT POINT NUMBER 454 N:2269312.217', E:6102269.448', ELEVATION= 491.16'.

RECORD DISTANCES SHOWN HEREON ARE AS THEY APPEAR ON THE DOCUMENT OF RECORD. DISTANCES MAY BE EITHER GRID OR GROUND, AS PER SAID RECORD.

ALL DISTANCES ARE BASED ON THE U.S. SURVEY FOOT.

ESTABLISHMENT NOTES

- A

ESTABLISHED THE CENTERLINE OF DOMINGUEZ RANCH ROAD BY HOLDING A LINE BETWEEN MONUMENT NOTES 1 AND 2.
- B

ESTABLISHED THE CENTERLINE OF DOMINGUEZ RANCH ROAD HOLDING RECORD RADIUS OF 300.00 FEET PER (R2) TANGENT TO LINE ESTABLISHMENTS A AND C.
- C

ESTABLISHED THE CENTERLINE OF DOMINGUEZ RANCH ROAD BY HOLDING A LINE BETWEEN MONUMENT NOTES 4 AND 6.
- D

ESTABLISHED THE CENTERLINE OF DOMINGUEZ RANCH ROAD HOLDING RECORD RADIUS OF 500.00 FEET PER (R1) TANGENT TO LINE ESTABLISHMENTS C AND E.
- E

ESTABLISHED THE CENTERLINE OF DOMINGUEZ RANCH ROAD BY HOLDING A LINE BETWEEN MONUMENT NOTE 7 AND EST. NOTE F.
- F

S.F.N ESTABLISHED THE CENTERLINE BC OF DOMINGUEZ RANCH ROAD BY HOLDING TIES PER (R5).
- G

ESTABLISHED THE S'LY LINE OF LOT 1 OF (R1) HOLDING A LINE BETWEEN MONUMENT NOTES 9 AND 10.
- H

ESTABLISHED THE NE'LY LINE OF LOT 36 OF (R2) HOLDING A LINE BETWEEN MONUMENT NOTES 11 AND 12.
- I

ESTABLISHED THE CENTERLINE OF YORBA RANCH ROAD BY HOLDING A LINE BETWEEN MONUMENT NOTES 13 AND 14.
- J

ESTABLISHED THE CENTERLINE OF YORBA RANCH ROAD BY HOLDING A LINE BETWEEN MONUMENT NOTES 18 AND 19.
- K

ESTABLISHED THE CENTERLINE POINT OF INTERSECTION OF YORBA RANCH ROAD BY LEAST SQUARE ADJUSTMENT BETWEEN MONUMENTS 14 AND 18.
- L

ESTABLISHED THE CENTERLINE POINT OF INTERSECTION OF YORBA RANCH ROAD BY LEAST SQUARE ADJUSTMENT BETWEEN MONUMENTS 14 AND 18.
- M

S.F.N. ESTABLISHED THE CENTERLINE INTERSECTION OF YORBA RANCH ROAD AND CARLOS ROAD HOLDING A RECORD DISTANCE OF 126.56' PER (R4) E'LY OF MON 16 AND PERPENDICULAR TO LINE ESTABLISHMENT NOTE D. FITS RECORD ANGLE PER (R4)
- N

ESTABLISHED THE CENTERLINE OF YORBA RANCH ROAD BY HOLDING A LINE BETWEEN ESTABLISHMENT NOTES Q AND R.
- O

ESTABLISHED THE CENTERLINE OF YORBA RANCH ROAD BY HOLDING A LINE BETWEEN MONUMENT NOTE 16 AND ESTABLISHMENT NOTE W.
- P

ESTABLISHED THE CENTERLINE OF YORBA RANCH ROAD AND THE PROLONGATION THEREOF BY HOLDING A LINE BETWEEN MONUMENT NOTE 19 AND ESTABLISHMENT NOTE D.
- Q

S.F.N. ESTABLISHED THE CENTERLINE BC OF YORBA RANCH ROAD HOLDING RECORD RADIUS OF 450.00 FEET PER (R4) TANGENT TO LINE ESTABLISHMENTS W AND F.
- R

ESTABLISHED THE CENTERLINE OF YORBA RANCH ROAD HOLDING RECORD RADIUS OF 450.00 FEET PER (R4) TANGENT TO LINE ESTABLISHMENTS W AND F.
- S

ESTABLISHED THE CENTERLINE OF YORBA RANCH ROAD HOLDING RECORD RADIUS OF 2000.00 FEET PER (R1) TANGENT TO LINE ESTABLISHMENTS W AND Q.
- T

ESTABLISHED THE E'LY R/W OF YORBA RANCH ROAD HOLDING A LINE PARALLEL WITH, & A RECORD DISTANCE OF 50' PER (R4) FROM LINE ESTABLISHMENT D.
- U

ESTABLISHED THE E'LY R/W OF YORBA RANCH ROAD HOLDING A LINE PARALLEL WITH, & A RECORD DISTANCE OF 50' PER (R4) FROM LINE ESTABLISHMENT D.
- V

ESTABLISHED THE CENTERLINE OF YORBA RANCH ROAD HOLDING RECORD RADIUS OF 458.24 FEET PER (R4) TANGENT TO LINE ESTABLISHMENTS Q AND R.
- W

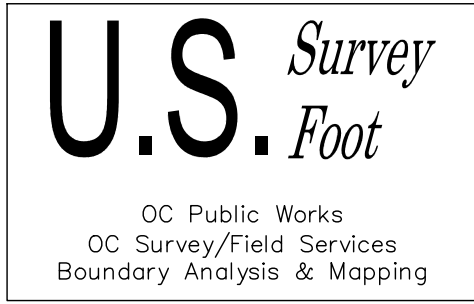
ESTABLISHED THE E'LY R/W OF YORBA RANCH ROAD HOLDING A LINE PARALLEL, & CONCENTRIC WITH, & A RECORD DISTANCE OF 50' PER (R4) FROM LINE ESTABLISHMENT Q.
- X

ESTABLISHED THE W'LY R/W OF DOMINGUEZ RANCH ROAD HOLDING A LINE PARALLEL WITH, & A RECORD DISTANCE OF 30' PER (R1) FROM LINE ESTABLISHMENT Q.
- Y

ESTABLISHED THE POINT OF BEGINNING OF (R3) ON THE W'LY RIGHT OF WAY DOMINQUEZ RANCH ROAD HOLDING A RECORD DISTANCE OF 122.01 FEET PER (R3) S'LY FROM MONUMENT NOTE 10.
- Z

ESTABLISHED HOLDING RECORD DISTANCE OF 53.20 FEET PER (R3), S'LY FROM MONUMENT 21 ALONG LINE ESTABLISHMENT NOTE Q.
- AA

ESTABLISHED HOLDING RECORD DISTANCE OF 59.46 FEET PER (R3), N'LY FROM ESTABLISHMENT NOTE Z.



COUNTY OF ORANGE OC PUBLIC WORKS OC SURVEY/FIELD SERVICES/BOUNDARY ANALYSIS & MAPPING			
ESPERANZA CHANNEL (E06) WALL MONITORING SURVEY			
BOUNDARY MAP			
PROJECT LIMITS: FROM DOMINGUEZ ROAD TO YORBA RANCH ROAD			
DATE OF SURVEY:05/16/2022		BY: T. LOFGREEN & CREW	
MAPPING		BY: T. LOFGREEN	
OFFICE CHECK		BY: E. MEDINA, PLS	
FIELD CHECK		BY: T. LOFGREEN	
SCALE: N.T.S.		W.O. #EF38001	FILE #2122PW--OP0002
FILE: ESPERANZA_CHANNEL_BOUNDARY_2022.DWG			

CURVE TABLE						
CURVE #	DELTA	RADIUS	LENGTH	RECORD DELTA	RECORD RADIUS	RECORD LENGTH
C1	19°39'51"	299.97'	102.95'	19°37'56" (R1)	300.00' (R1)	102.79' (R1)
C2	25°14'57"	299.97'	132.19'	25°15'29" (R1)	300.00' (R1)	132.25' (R1)
C3	8°03'44"	499.99'	70.35'	08°02'10" (R1)	500.00' (R1)	70.13' (R1)
C4	44°20'18"	1009.98'	781.57'	44°20'18" (R3)	1010.00' (R3)	781.59' (R3)
C5	7°17'18"	1021.98'	130.00'	07°17'18" (R3)	1022.00' (R3)	130.00' (R3)
C6	2°20'54"	1013.98'	41.56'	02°20'54" (R3)	1014.00' (R3)	41.56' (R3)
C7	0°59'09"	985.99'	16.97'	00°59'43" (R3)	986.00' (R3)	17.13' (R3)
C8	3°59'33"	1013.97'	70.66'	04°00'06" (R3)	1014.00' (R3)	70.82' (R3)
C9	10°05'00"	985.98'	173.52'	10°05'00" (R3)	986.00' (R3)	173.52' (R3)
C10	44°20'18"	989.98'	766.10'	44°20'18" (R3)	990.00' (R3)	766.11' (R3)
C11	57°00'00"	999.99'	994.82'	57°00'00" (R6)	1000.00' (R6)	994.84' (R6)
C12	2°32'51"	999.84'	44.46'	N/A	1000.00' (R6)	N/A
C13	5°08'07"	1999.96'	179.25'	05°08'13" (R4)	2000.00' (R4)	179.31' (R4)

LINE TABLE			
LINE #	BEARING	MEASURED DISTANCE	RECORD DISTANCE
L1	N45°27'03"E	144.10'	144.25' (R2)
L2	N89°27'31"W	30.00'	30.00' (R1)
L3	N89°28'03"W	107.08'	107.28' (R1)
L4	N89°27'31"W	30.00'	30' (R1)
L5	N00°32'29"E	65.00'	65.00' (R1)
L6	N08°36'13"E	116.29'	116.56' (R1)
L7	N53°14'55"E	28.75'	28.75' (R1)
L8	N49°04'47"W	24.35'	24.37' (R1)
L9	N53°12'13"E	27.89'	27.89' (R1)
L10	N49°05'56"W	23.98'	24.00' (R1)
L11	N00°32'29"E	122.01'	122.01' (R3)
L12	N65°12'25"W	158.89'	158.89' (R3)
L13	N24°35'50"W	45.71'	45.71' (R3)
L14	N63°17'25"W	11.27'	11.27" (R3)
L15	N79°26'41"E	8.00'	8.00' (R3)
L16	N08°12'25"W	8.24'	8.24' (R3)
L17	N17°23'03"E	59.46'	59.46' (R3)
L18	N17°23'03"E	53.20'	53.20' (R3)
L19	N17°23'03"E	13.95'	13.95' (R1)
L20	N08°11'51"W	8.23'	N/A
L21	N08°12'25"W	8.24'	8.24' (R3)
L22	N14°26'17"W	44.64'	44.64' (R3)
L23	N65°12'25"W	149.88'	149.87' (R3)
L24	S00°32'29"W	21.93'	21.94' (R3)
L25	N12°14'56"E	59.75'	59.75' (R4)
L26	N12°14'56"E	62.05'	62.06' (R4)
L27	N77°45'04"W	50.00'	50' (R4)
L28	N17°23'03"E	57.10'	57.33' (R4)
L29	N72°38'03"W	50.00'	50' (R4)
L30	N12°14'56"E	62.05'	62.06' (R4)
L31	N72°36'56"W	126.56'	126.56' (R4)
L32	N65°12'25"W	32.87'	N/A
L33	N23°07'35"W	165.90'	N/A
L34	S17°23'03"W	166.06'	N/A
L35	N17°23'03"E	89.69'	N/A
L36	N12°14'57"E	89.70'	N/A
L37	S77°45'07"E	50.00'	N/A
L38	S77°57'11"E	49.98'	N/A
L39	S65°12'25"E	187.25'	N/A

REFERENCES

- (R1) = TRACT NO. 10265, MM 434/14-17
(R2) = TRACT NO. 9957, MM 424/39-43
(R3) = EASEMENT DEED, O.R. 13915/747
(R4) = TRACT NO. 10266, MM 434/44-46
(R5) = CENTERLINE TIES CITY OF YORBA LINDA TRACT NO. 10266
(R6) = COUNTY OF ORANGE IMPROVEMENT PLAN E06-701-3

NOTES

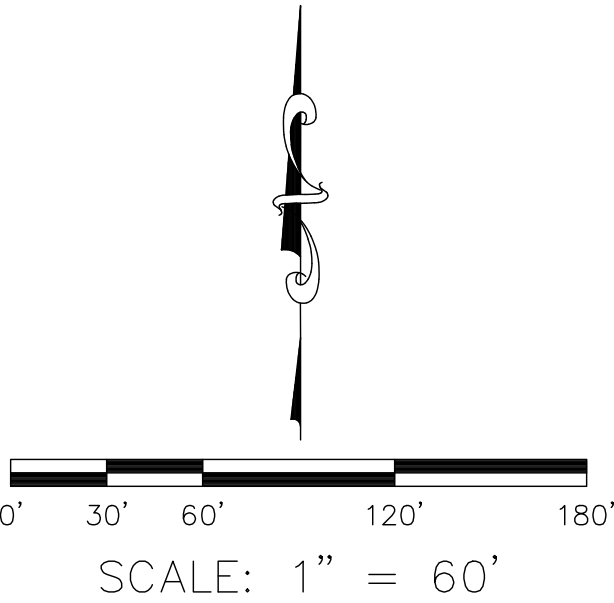
- ALL BOUNDARY LINES NOT SHOWN IN BOLD ARE FOR GRAPHICAL REPRESENTATION ONLY.
- RECORD DISTANCES SHOWN HEREON ARE AS THEY APPEAR ON THE DOCUMENT OF RECORD. DISTANCES MAY BE EITHER GRID OR GROUND, AS PER SAID RECORD.
- REFERENCE DOCUMENTS IN THE REFERENCE LEGEND ARE LIVE HYPERLINKS TO SAID DOCUMENT.
- MONUMENT SYMBOLS CONTAIN LIVE HYPERLINKS TO IMAGES, IF THEY EXIST, OF RESPECTIVE MONUMENT.

LEGEND

- FOUND MONUMENT AS NOTED
⊗ S.F.N. - SEARCHED, FOUND NOTHING
C CALC FROM RECORD MAP
R RECORD MAP
M MEASURED

EASEMENT NOTES

- ① EASEMENT GRANTED TO O.C.F.C.D. PARCEL NO 301, FACILITY E06, 13915/747 O.R. (R3)



COUNTY OF ORANGE OC PUBLIC WORKS OC SURVEY/FIELD SERVICES/BOUNDARY ANALYSIS & MAPPING		
ESPERANZA CHANNEL (E06) WALL MONITORING SURVEY		
BOUNDARY MAP		
PROJECT LIMITS: FROM DOMINGUEZ ROAD TO YORBA RANCH ROAD		
DATE OF SURVEY: 05/16/2022	BY: T. LOFGREEN & CREW	SHEET NO. 3 of 4
MAPPING	BY: T. LOFGREEN	
OFFICE CHECK	BY: E. MEDINA, PLS	
FIELD CHECK	BY: T. LOFGREEN	
SCALE: 1"=60'	W.O. #EF38001	
FILE #2122PW-OP0002		
FILE: ESPERANZA_CHANNEL_BOUNDARY_2022.DWG		

MARK	DATE	ITEM
REVISIONS		

