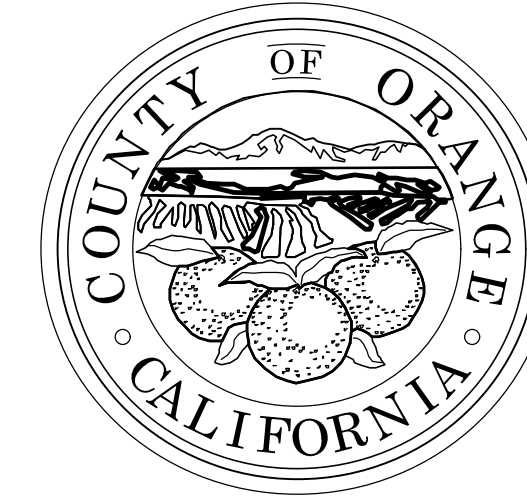


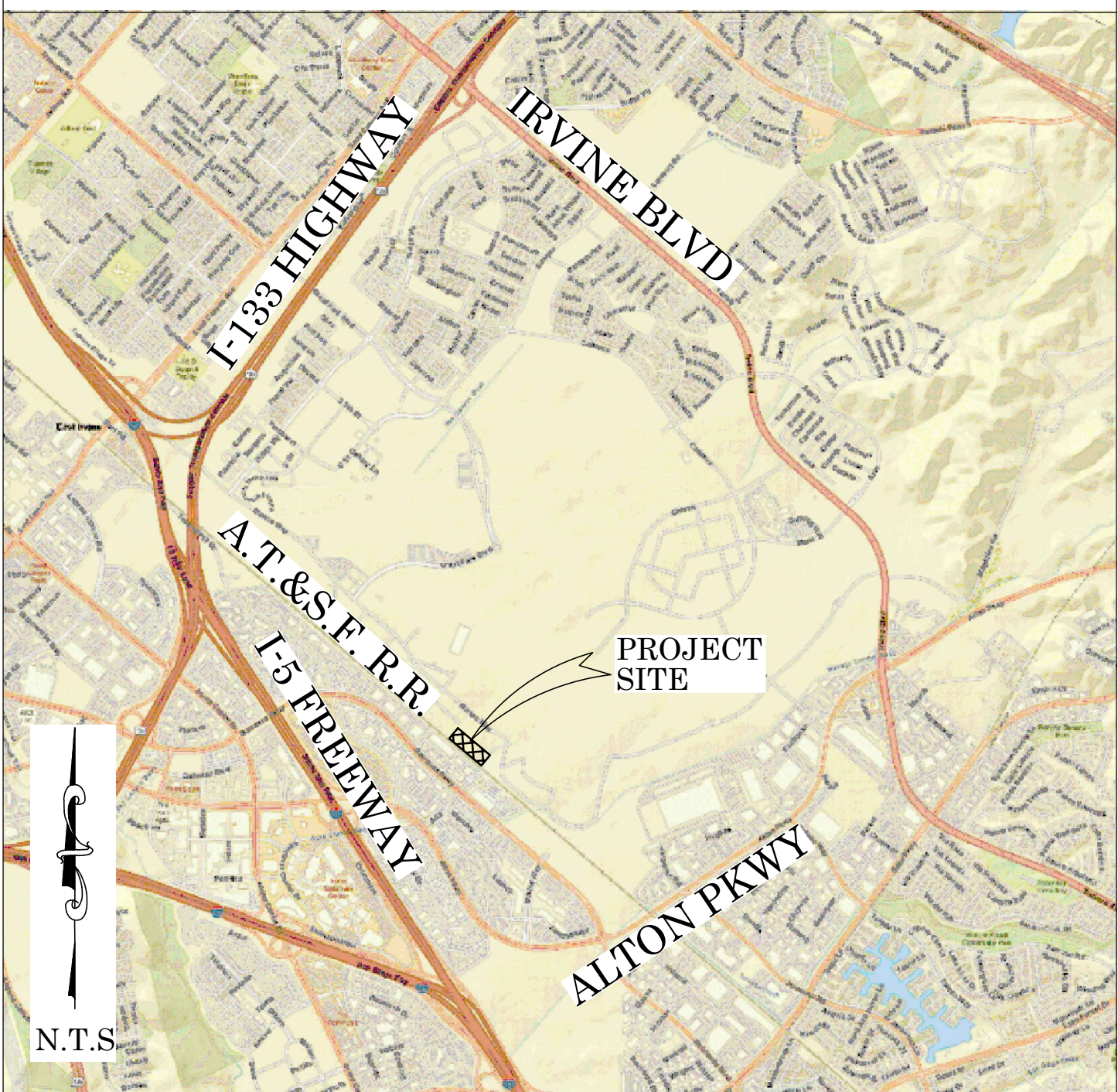


OC PUBLIC WORKS DEPARTMENT
JAMES TREADAWAY, DIRECTOR OF PUBLIC WORKS
KEVIN HILLS, COUNTY SURVEYOR
HOME 5



(TRANSFER BUILDING 360)

LOCATION MAP



SENIOR LAND SURVEYOR'S CERTIFICATE:

THIS MAP CORRECTLY REPRESENTS A SURVEY MADE BY ME OR UNDER MY DIRECTION IN CONFORMANCE WITH REQUIREMENTS OF THE PROFESSIONAL LAND SURVEYOR'S ACT; THIS 1TH DAY OF FEBRUARY, 2021.

MICHAEL KUBISTY, PLS. SENIOR LAND SURVEYOR



DEPUTY COUNTY SURVEYOR'S STATEMENT:

THIS MAP HAS BEEN EXAMINED IN ACCORDANCE WITH THE PROFESSIONAL LAND SURVEYOR'S ACT; THIS 1TH DAY OF FEBRUARY, 2021.

WADE WEAVER, PLS. DEPUTY COUNTY SURVEYOR



FOUND CGPS "LGWD"
N: 2180062.72'
E: 6100748.57'
THIS IS A CONTINUOUS GPS STATION (CGPS) AND IS PART OF THE CALIFORNIA SPATIAL REFERENCE NETWORK (CSRN), FROM WHICH DATA CAN BE DOWNLOADED HERE: [HTTP://SOPACCSRC.UCSD.EDU/](http://SOPACCSRC.UCSD.EDU/).

FOUND CGPS "WHYT"
N: 2191882.25'
E: 6137734.82'
THIS IS A CONTINUOUS GPS STATION (CGPS) AND IS PART OF THE CALIFORNIA SPATIAL REFERENCE NETWORK (CSRN), FROM WHICH DATA CAN BE DOWNLOADED HERE: [HTTP://SOPACCSRC.UCSD.EDU/](http://SOPACCSRC.UCSD.EDU/).

CONTROL PT#100
FOUND 2" IP WITH 2 1/2" BRASS CAP
STAMPED "USN, 122, RE 1018, S785, 1946,
250, 286, 140"
N: 2191208.97'
E: 6104382.01'



BASIS OF BEARINGS

THE BASIS OF BEARINGS FOR THIS SURVEY IS BASED ON THE CALIFORNIA COORDINATE SYSTEM (CCS83), ZONE VI, NAD 83, OCS (2017.50) EPOCH ADJUSTMENT, AS DETERMINED LOCALLY BY A LINE BETWEEN CONTINUOUS GLOBAL POSITIONING STATIONS CGPS STATIONS (LGWD) AND (WHYT) BEING NORTH 72°16'40" EAST AS DERIVED FROM THE COORDINATES PUBLISHED BY THE CALIFORNIA SPATIAL REFERENCE CENTER (CSRN) ALONG WITH DATA SHEETS ON FILE IN THE OFFICE OF THE ORANGE COUNTY SURVEYOR.

HORIZONTAL DATUM

COORDINATES SHOWN ARE BASED ON THE CALIFORNIA COORDINATE SYSTEM (CCS83), ZONE VI, NAD 83, OCS (2017.50) EPOCH ADJUSTMENT.
ALL DISTANCES SHOWN ARE GRID, UNLESS OTHERWISE NOTED. TO OBTAIN GROUND DISTANCES MULTIPLY GRID BY A COMBINED FACTOR OF 1.000033871.
THIS COMBINATION FACTOR WAS HELD AT
PT#100 N:2191208.97' E: 6104382.01' EL=218.94'
ALL DISTANCES ARE BASED ON THE U.S. SURVEY FOOT.

NOTES

Lines shown without bearings, distances & curvature information are for graphical representation only.
RECORD MEASUREMENTS SHOWN ARE GROUND OR AS THEY APPEAR ON SAID RECORD DOCUMENT, UNLESS OTHERWISE NOTED.

SHEET INDEX

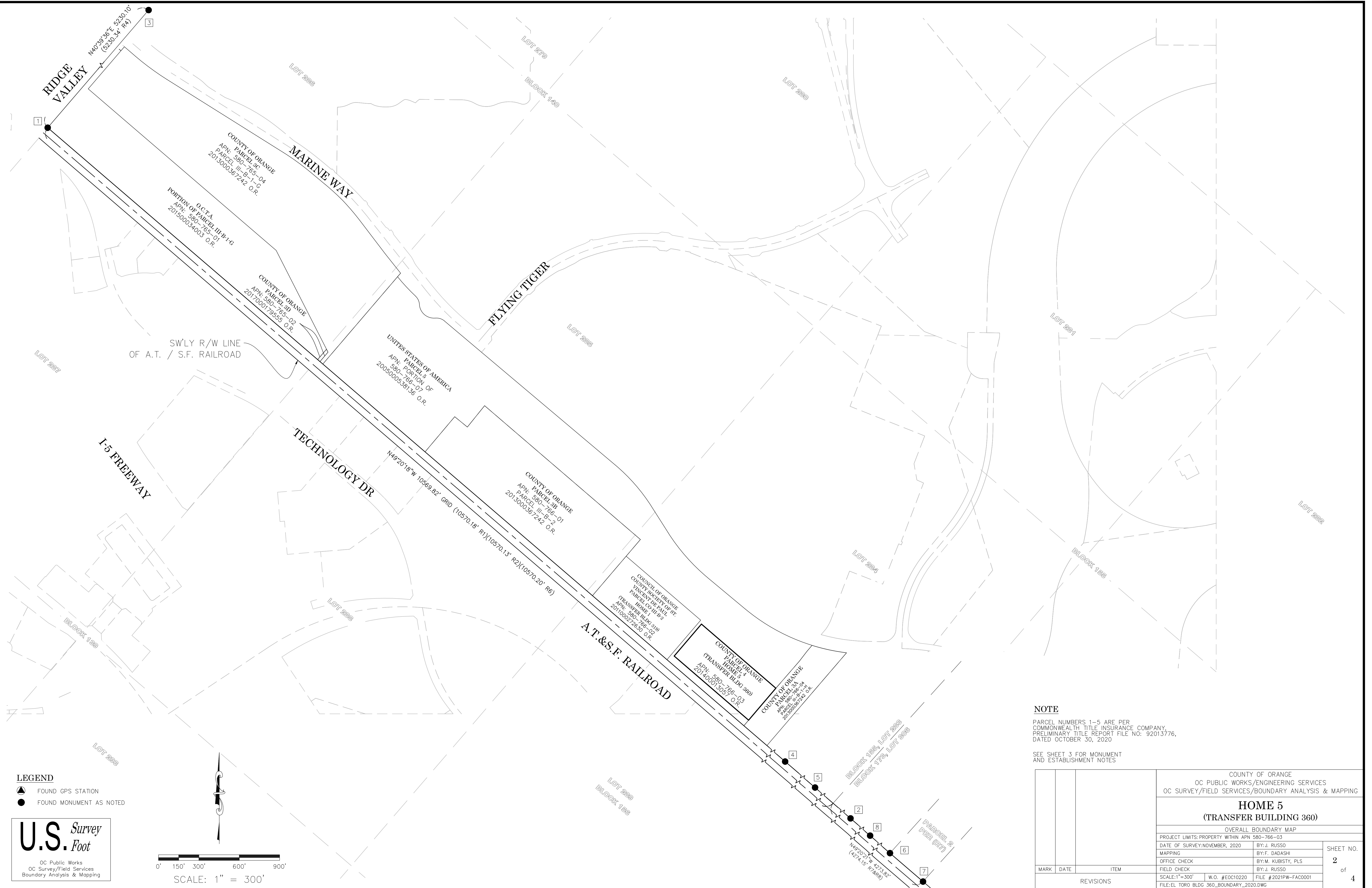
SHEET	NO.	DESCRIPTION
SHEET 1	1	TITLE SHEET
SHEET 2	2	OVERALL BOUNDARY MAP
SHEET 3	3	BLDG 360 BOUNDARY MAP
SHEET 4	4	STAKING EXHIBIT

PURPOSE OF SURVEY

THE PURPOSE OF THE SURVEY IS TO ESTABLISH THE BOUNDARY & EASEMENTS FOR THE HOME 5 (TRANSFER BUILDING 360)

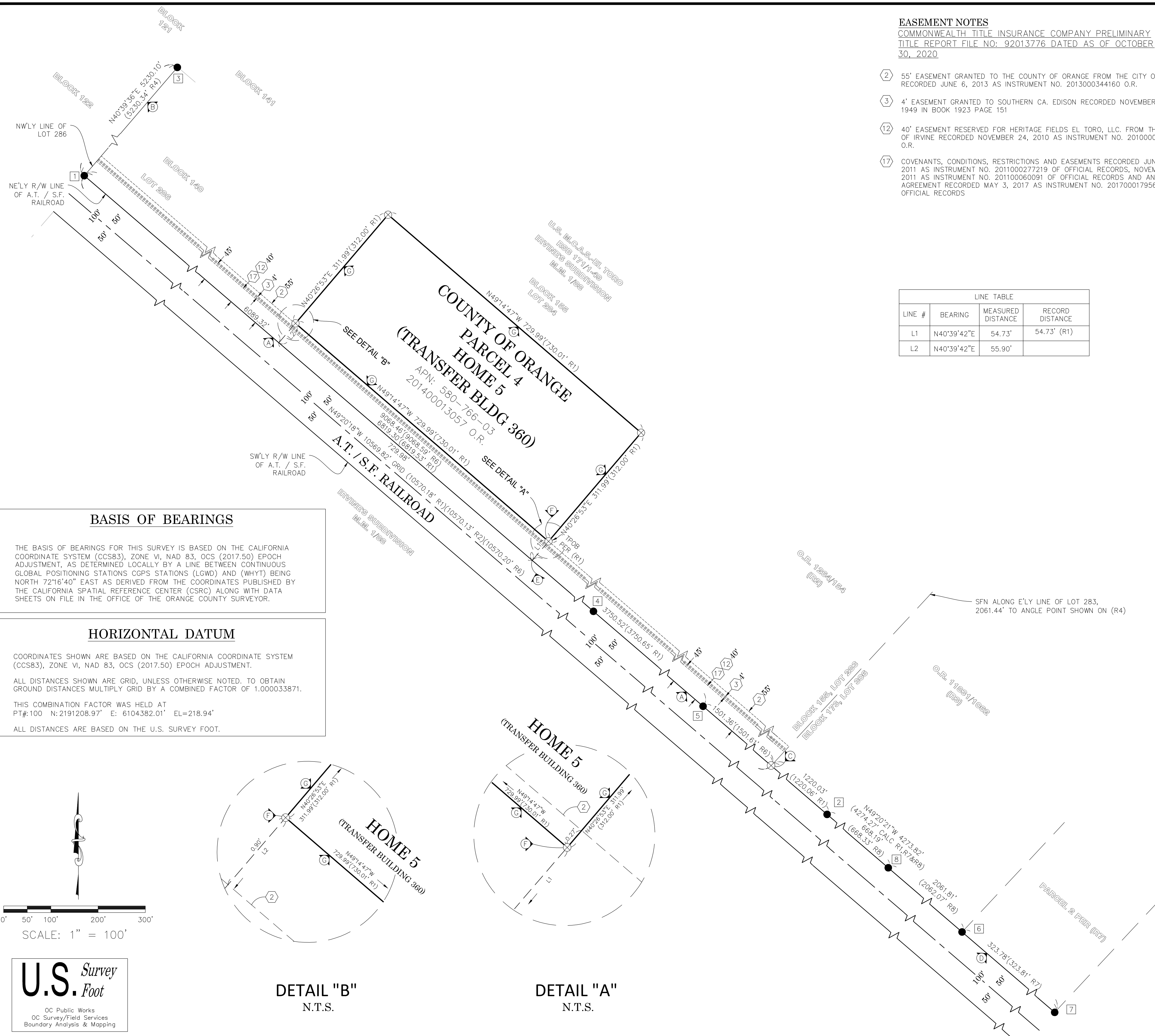
BOUNDARY MAPPING PROJECT

COUNTY OF ORANGE OC PUBLIC WORKS OC SURVEY/FIELD SERVICES/BOUNDARY ANALYSIS & MAPPING			
HOME 5 (TRANSFER BUILDING 360)			
TITLE SHEET			
PROJECT LIMITS: PROPERTY WITHIN APN 580-766-03			
DATE OF SURVEY: NOVEMBER, 2020	BY: J. RUSSO	SHEET NO. 1 of 4	
MAPPING	BY: F. DADASHI		
OFFICE CHECK	BY: M. KUBISTY, PLS.	1 of 4	
FIELD CHECK	BY: J. RUSSO		
SCALE: N.T.S.	W.O. #E0C10220	FILE #2021PW-FAC0001	
FILE: EL TORO BLDG 360_BOUNDARY_2020.DWG			



PARCEL NUMBERS 1-5 ARE PER
COMMONWEALTH TITLE INSURANCE COMPANY,
PRELIMINARY TITLE REPORT FILE NO: 92013776,
DATED OCTOBER 30, 2020

			COUNTY OF ORANGE OC PUBLIC WORKS/ENGINEERING SERVICES OC SURVEY/FIELD SERVICES/BOUNDARY ANALYSIS & MAPPING			
			HOME 5 (TRANSFER BUILDING 360)			
			OVERALL BOUNDARY MAP			
			PROJECT LIMITS: PROPERTY WITHIN APN 580-766-03			
			DATE OF SURVEY: NOVEMBER, 2020		BY: J. RUSSO	
			MAPPING		BY: F. DADASHI	
			OFFICE CHECK		BY: M. KUBISTY, PLS	
			FIELD CHECK		BY: J. RUSSO	
			SCALE: 1"=300'		W.O. #E0C10220	FILE # 2021PW-FAC0001
			FILE: EAL TORO BLDG 360_BOUNDARY_2020.DWG			
MARK	DATE	ITEM		<div style="text-align: center;"> 2 of 4 </div>		
REVISIONS						






COMMONWEALTH TITLE INSURANCE COMPANY PRELIMINARY
TITLE REPORT FILE NO: 92013776 DATED AS OF OCTOBER
30, 2020

- (2) 55' EASEMENT GRANTED TO THE COUNTY OF ORANGE FROM THE CITY OF IRVINE RECORDED JUNE 6, 2013 AS INSTRUMENT NO. 2013000344160 O.R.
- (3) 4' EASEMENT GRANTED TO SOUTHERN CA. EDISON RECORDED NOVEMBER 3, 1949 IN BOOK 1923 PAGE 151
- (12) 40' EASEMENT RESERVED FOR HERITAGE FIELDS EL TORO, LLC. FROM THE CITY OF IRVINE RECORDED NOVEMBER 24, 2010 AS INSTRUMENT NO. 2010000631758 O.R.
- (17) COVENANTS, CONDITIONS, RESTRICTIONS AND EASEMENTS RECORDED JUNE 6, 2011 AS INSTRUMENT NO. 2011000277219 OF OFFICIAL RECORDS, NOVEMBER 28, 2011 AS INSTRUMENT NO. 201100060091 OF OFFICIAL RECORDS AND AN AGREEMENT RECORDED MAY 3, 2017 AS INSTRUMENT NO. 2017000179560 OF OFFICIAL RECORDS

LINE TABLE			
LINE #	BEARING	MEASURED DISTANCE	RECORD DISTANCE
L1	N40°39'42"E	54.73'	54.73' (R1)
L2	N40°39'42"E	55.90'	

MONUMENT NOTES

- 1 FOUND 2" IP WITH 2 1/2" BRASS CAP STAMPED "USN, 122, RE 1018, S785, 1946, 250, 286, 140", PER (R4), DOWN 2.5' IN DIRT, ACCEPTED AS POINT OF INTERSECTION OF THE NE'LY R/W LINE OF THE ATCHISON, TOPEKA AND SANTA FE RAILROAD AND THE NW'LY LINE OF LOT 286 OF BLOCK 140.
- 2 FOUND LEAD AND 1 1/4" OCS TAG IN CONC. WALL FOOTING PER (R4), S40°39'41"W 0.07' (S40°39'56"W 0.07' R6) FROM ESTABLISHMENT NOTE .
- 3 FOUND 1 3/4" BRASS CAP STAMPED "LS 7083" PER (R5), DOWN 1.6" IN WELL MONUMENT, ACCEPTED AS CORNER OF BLOCKS 121, 122, 140 AND 142.
- 4 FOUND 2" IP WITH TAG STAMPED "LS 6654" PER (R6), FLUSH IN DIRT, N40°39'42"E 0.05' FROM ESTABLISHMENT NOTE .
- 5 FOUND 2" IP WITH TAG STAMPED "LS 6654" PER (R6), DOWN 0.3', ACCEPTED AS POINT ON NE'LY R/W LINE OF THE ATCHISON, TOPEKA AND SANTA FE RAILROAD.
- 6 FOUND 2" IP WITH TAG STAMPED "LS 5750" PER (R7), DOWN 0.1', ACCEPTED AS POINT ON NE'LY R/W LINE OF THE ATCHISON, TOPEKA AND SANTA FE RAILROAD.
- 7 FOUND 2" IP WITH TAG STAMPED "LS 5750" PER (R7), DOWN 0.1', ACCEPTED AS POINT ON NE'LY R/W LINE OF THE ATCHISON, TOPEKA AND SANTA FE RAILROAD.
- 8 FOUND LEAD AND 3/4" TAG STAMPED "LS 3246" IN CONC. WALL PER (R8), N40°39'39"E 0.15' FROM ESTABLISHMENT NOTE .

ESTABLISHMENT NOTES

- (A) ESTABLISHED THE NE'LY R/W LINE OF THE ATCHISON, TOPEKA AND SANTA FE RAILROAD BY HOLDING A LINE BETWEEN MONUMENTS (1) AND (5)
- (B) ESTABLISHED THE NW'LY LINE OF LOT 286 OF BLOCK 140 OF (R1) HOLDING A LINE BETWEEN MONUMENTS (1) AND (3)
- (C) SEARCHED FOUND NOTHING ESTABLISHED THE SE CORNER OF LOT 283 OF BLOCK 155 OF (R9) HOLDING A RECORD DISTANCE OF 10,569.82' GRID PER (R1) SE'LY FROM MONUMENT NOTE (1) ALONG ESTABLISHMENT (A)
- (D) ESTABLISHED THE NE'LY R/W LINE OF THE ATCHISON, TOPEKA AND SANTA FE RAILROAD BY HOLDING A LINE BETWEEN ESTABLISHMENT NOTE (C) AND MONUMENT NOTE (7)
- (E) ESTABLISHED THE POC OF (R1) HOLDING THE RECORD DISTANCE OF 3750.52' ALONG ESTABLISHMENT NOTE (A) NW'LY FROM ESTABLISHMENT NOTE (C)
- (F) ESTABLISHED THE MOST SOUTHERLY CORNER OF TRANSFER BLDG 360 (R1) HOLDING RECORD ANGLES & DISTANCES PER (R1) AT ESTABLISHMENT NOTE (E) FROM LINE ESTABLISHMENT (A)
- (G) ESTABLISHED TRANSFER BLDG 360 PARCEL (R1) HOLDING RECORD ANGLES & DISTANCES OF 312.00' & 730.01' PER (R1) FROM ESTABLISHMENT NOTE (F)

REFERENCES

R1) = QUIT CLAIM DEED INSTRUMENT NO. 201400013057, REC'D 01/13/2014
R2) = FINAL JUDGMENT AND DECREE OF CONDEMNATION, BOOK 1264/154 O.R., REC'D 06/30/1944
R3) = CORPORATION GRANT DEED BOOK 11831/1062 O.R., REC'D 07/29/1978
R4) = RECORD OF SURVEY 97-1038, RSB 171/1-49
R5) = CORNER RECORD, C.R. 2014-0481
R6) = RECORD OF SURVEY NO. 2007-1206, RSB 225/29-42
R7) = PARCEL MAP NO 2014-124, PMB 387/30-34
R8) = PARCEL MAP NO 84-604, PMB 190/45-46
R9) = IRVINE SUBDIVISION MAP, BOOK 1 PAGE 88

NOTE

PARCEL NUMBERS 1-5 ARE PER
COMMONWEALTH TITLE INSURANCE COMPANY,
PRELIMINARY TITLE REPORT FILE NO: 92013776
DATED OCTOBER 30, 2020

NOTES

LINES SHOWN WITHOUT BEARINGS, DISTANCES & CURVATURE INFORMATION
 ARE FOR GRAPHICAL REPRESENTATION ONLY.

RECORD MEASUREMENTS SHOWN ARE GROUND OR AS THEY APPEAR ON SAID
RECORD DOCUMENT, UNLESS OTHERWISE NOTED.

LEGEND

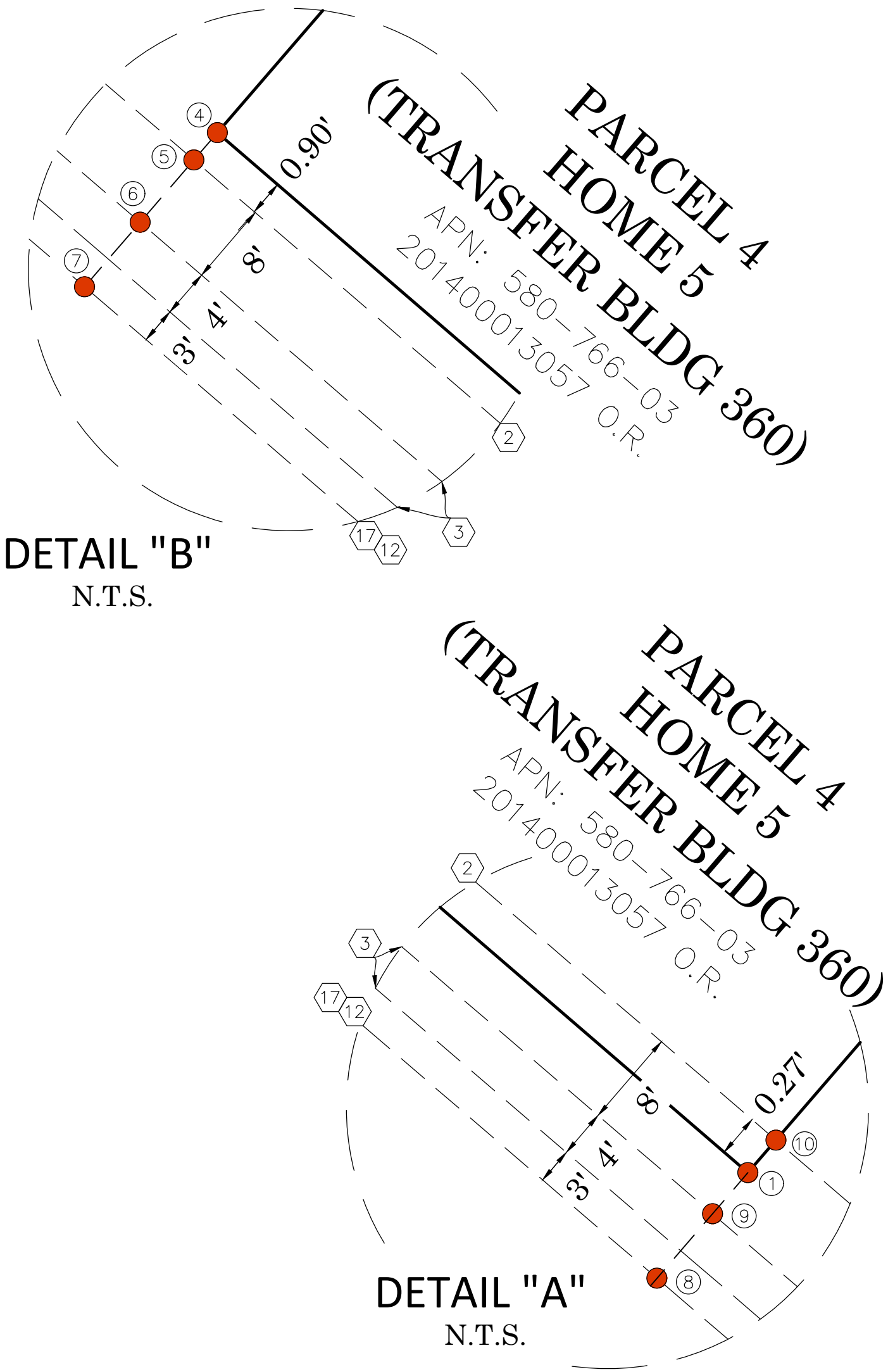
- ☒ FOUND MONUMENT AS NOTED
☐ SEARCHED FOUND NOTHING

MARK	DATE	ITEM	COUNTY OF ORANGE OC PUBLIC WORKS/ENGINEERING SERVICES OC SURVEY/FIELD SERVICES/BOUNDARY ANALYSIS & MAPPING		
			HOME 5 (TRANSFER BUILDING 360)		
			BOUNDARY MAP		
			PROJECT LIMITS: PROPERTY WITHIN APN 580-766-03		
			DATE OF SURVEY:NOVEMBER, 2020	BY:J. RUSSO	
			MAPPING	BY:F. DADASHI	
			OFFICE CHECK	BY:M. KUBISTY, PLS	
			FIELD CHECK	BY:J. RUSSO	
			SCALE:1"=100'	W.O. #EOC10220	FILE #2021PW-FAC0001
			EL TORO BLDG 360_BOUNDARY_2020.DWG		
REVISIONS			SHEET NO. 3 of 4		

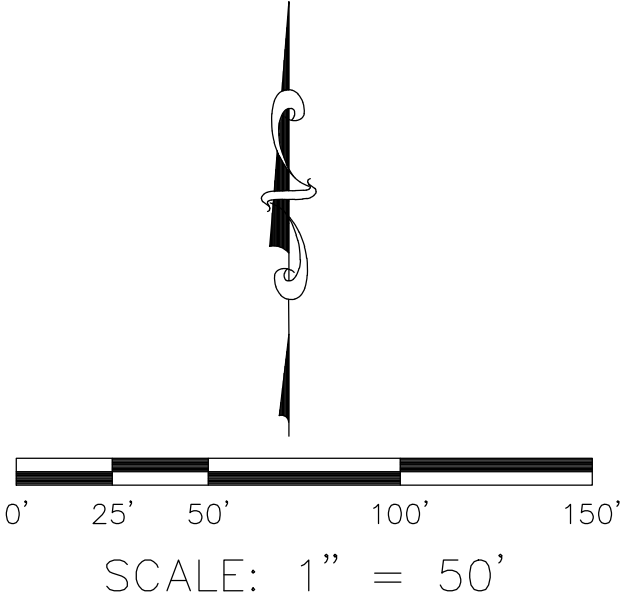
STAKING EXHIBIT



PROPERTY AND EASEMENT STAKING POINTS			
POINT NO.	NORTHING	EASTING	DESCRIPTION
1	2186807.12	6109590.61	PROPERTY CORNER
2	2187044.54	6109793.02	PROPERTY CORNER
3	2187521.08	6109240.03	PROPERTY CORNER
4	2187283.66	6109037.63	PROPERTY CORNER
5	2187282.97	6109037.04	INTERSECTION OF NELY LINE OF EASEMENT WITH PROPERTY LINE PROLONGATION
6	2187276.88	6109031.85	INTERSECTION OF NELY LINE OF EASEMENT WITH PROPERTY LINE PROLONGATION
7	2187271.56	6109027.31	INTERSECTION OF NELY LINE OF EASEMENT WITH PROPERTY LINE PROLONGATION
8	2186795.91	6109581.05	INTERSECTION OF NELY LINE OF EASEMENT WITH PROPERTY LINE PROLONGATION
9	2186801.24	6109585.60	INTERSECTION OF NELY LINE OF EASEMENT WITH PROPERTY LINE PROLONGATION
10	2186807.31	6109590.80	INTERSECTION OF NELY LINE OF EASEMENT WITH PROPERTY LINE



U.S. Survey Foot
OC Public Works
OC Survey/Field Services
Boundary Analysis & Mapping



			COUNTY OF ORANGE OC PUBLIC WORKS/ENGINEERING SERVICES OC SURVEY/FIELD SERVICES/BOUNDARY ANALYSIS & MAPPING				
			HOME 5 (TRANSFER BUILDING 360)				
			STAKING EXHIBIT				
			PROJECT LIMITS: PROPERTY WITHIN APN 580-766-03				
			DATE OF SURVEY:NOVEMBER, 2020		BY: J. RUSSO		SHEET NO. 4 of 4
			MAPPING		BY: F. DADASHI		
OFFICE CHECK		BY: M. KUBISTY, PLS					
FIELD CHECK		BY: J. RUSSO					
SCALE:1"=50'		W.O. #EOC10220					
MARK	DATE	ITEM	FILE # 2021PW-FAC0001				
REVISIONS			FILE:EL TORO BLDG 360_BOUNDARY_2020.DWG				