



OC PUBLIC WORKS DEPARTMENT

SHANE SILSBY, DIRECTOR

KEVIN HILLS, COUNTY SURVEYOR

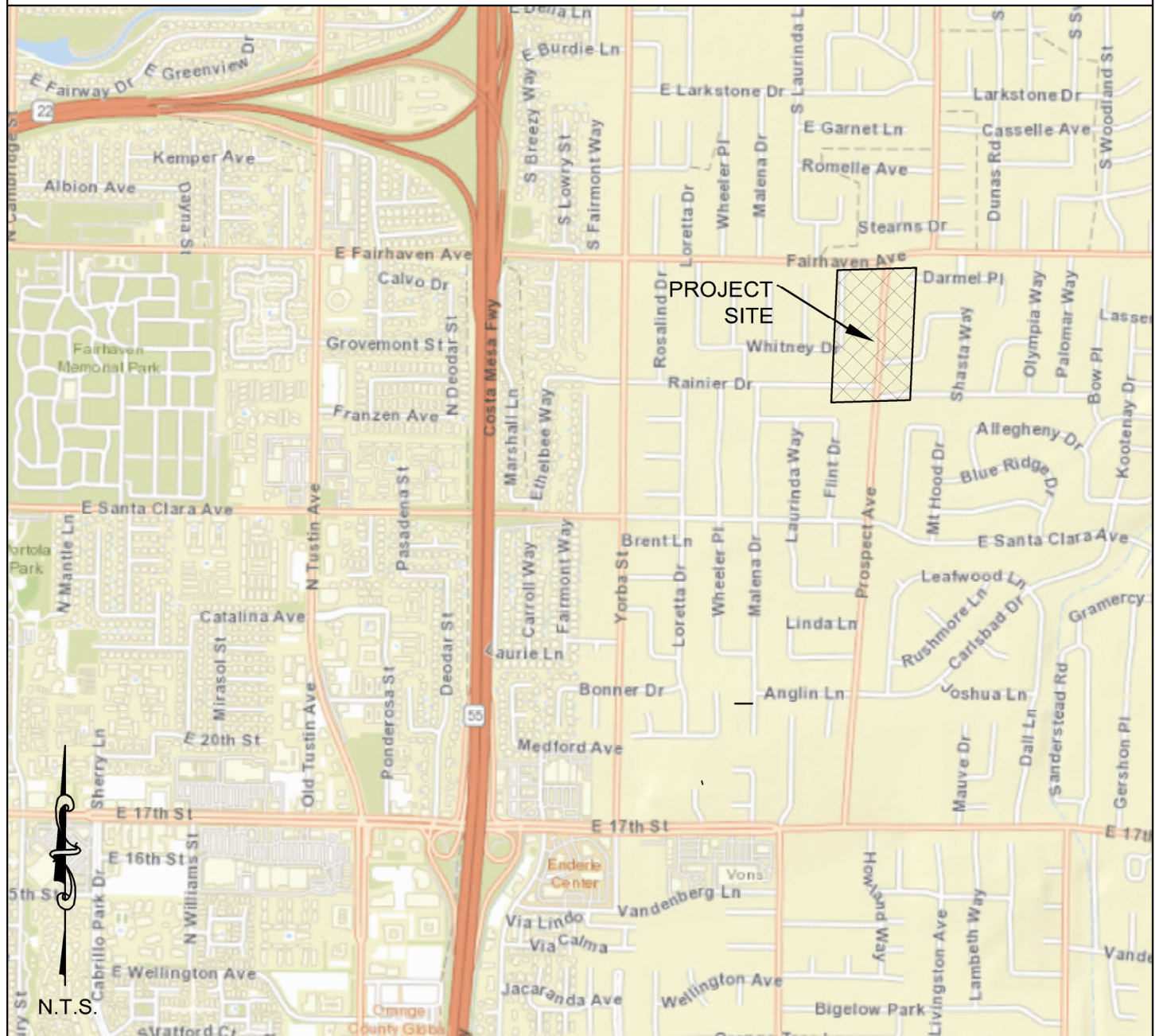
EL MODENA IRVINE CHANNEL



LIMITS: CONCRETE STRUCTURE AT FAIRHAVEN AVE TO 1000 FT D/S

FD CGPS "SACY"
N: 2218015.22'
E: 6081433.12'
THIS IS AS CONTINUOUS GPS STATION
(CGPS) AND IS PART OF THE
CALIFORNIA SPATIAL REFERENCE
NETWORK (CSRN), FROM WHICH DATA
CAN BE DOWNLOADED HERE:
[HTTP://SOPAC.CSRN.UCSB.EDU/](http://sopac.csrn.ucsd.edu/)

LOCATION MAP



SENIOR LAND SURVEYOR'S CERTIFICATE:

THIS MAP CORRECTLY REPRESENTS A SURVEY MADE BY ME OR UNDER MY DIRECTION IN CONFORMANCE WITH REQUIREMENTS OF THE PROFESSIONAL LAND SURVEYOR'S ACT; THIS 24TH DAY OF SEPTEMBER, 2019.

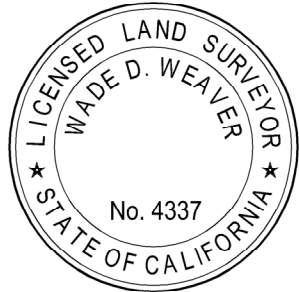
MICHAEL KUBISTY PLS SENIOR LAND SURVEYOR



DEPUTY COUNTY SURVEYOR'S STATEMENT:

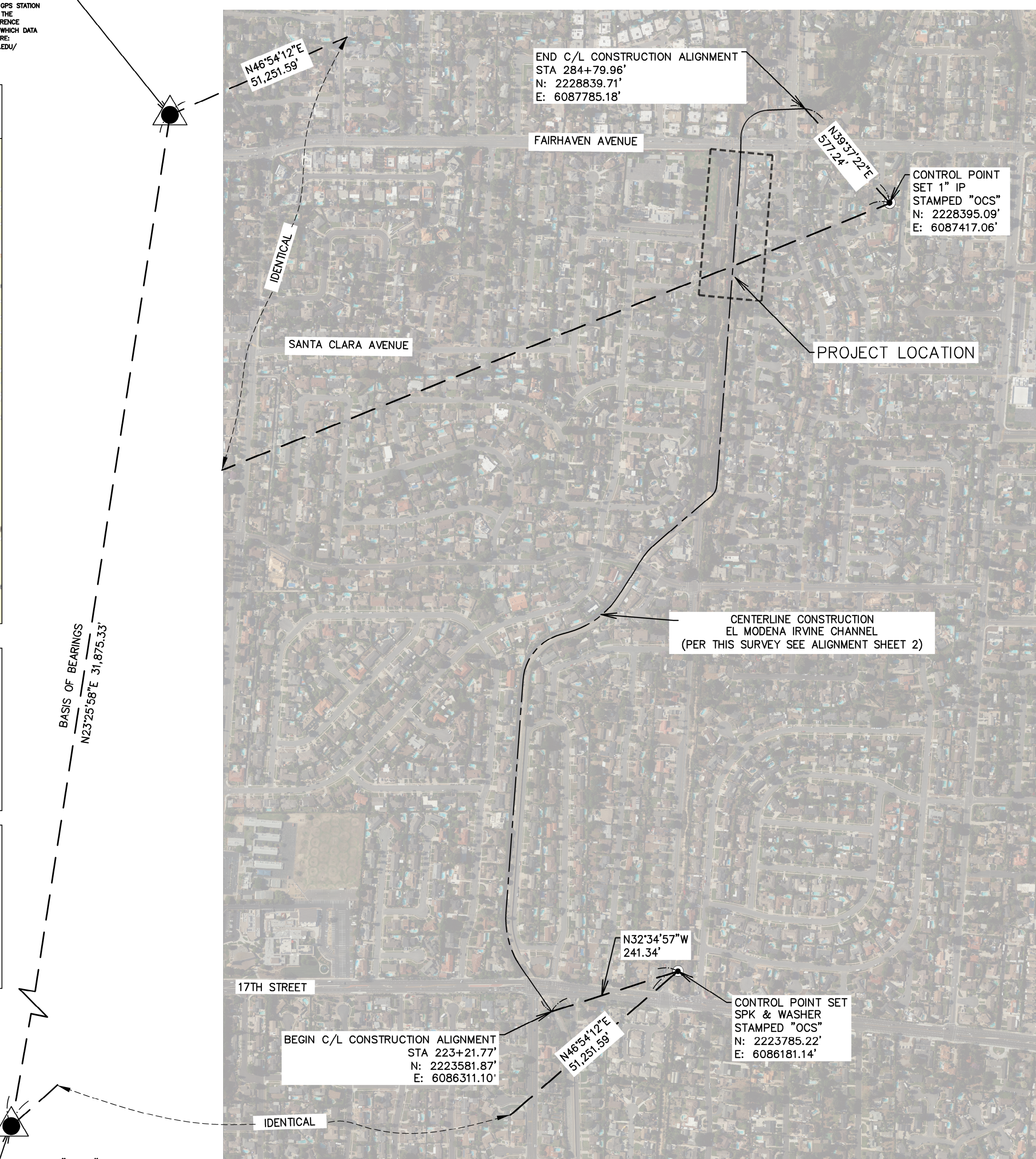
THIS MAP HAS BEEN EXAMINED IN ACCORDANCE WITH THE PROFESSIONAL LAND SURVEYOR'S ACT; THIS 24TH DAY OF SEPTEMBER, 2019.

WADE WEAVER PLS DEPUTY COUNTY SURVEYOR



U.S. Survey Foot

OC Public Works/Engineering Services
OC Survey/Field Services
Boundary Analysis & Mapping



FD CGPS "FVPK"
N: 2188768.54'
E: 6048757.12'
THIS IS AS CONTINUOUS GPS STATION (CGPS) AND IS PART OF THE CALIFORNIA SPATIAL REFERENCE NETWORK (CSRN), FROM WHICH DATA CAN BE DOWNLOADED HERE:
[HTTP://SOPAC.CSRN.UCSB.EDU/](http://sopac.csrn.ucsd.edu/)

TOPOGRAPHIC MAPPING PROJECT

BASIS OF BEARINGS

THE BASIS OF BEARINGS FOR THIS SURVEY IS BASED ON THE CALIFORNIA COORDINATE SYSTEM (CCS83), ZONE VI, NAD 83, OCS (2007.00) EPOCH ADJUSTMENT, AS DETERMINED LOCALLY BY A LINE BETWEEN CONTINUOUS GLOBAL POSITIONING STATIONS (CGPS) "FVPK" AND "SACY", BEING N23°25'58"E AS DERIVED FROM THE COORDINATES ESTABLISHED BY THE CALIFORNIA SPATIAL REFERENCE CENTER (CSRC) ALONG WITH DATASHEETS ON FILE IN THE OFFICE OF ORANGE COUNTY SURVEYOR.

HORIZONTAL DATUM

COORDINATES SHOWN HEREON ARE BASED ON THE CALIFORNIA COORDINATE SYSTEM (CCS83), ZONE VI, 1983 NORTH AMERICAN DATUM (2007.00 EPOCH O.C.S. G.P.S. ADJUSTMENT).

ALL DISTANCES SHOWN ARE GRID, UNLESS OTHERWISE NOTED.
MULTIPLY A GRID DISTANCE BY 1.0000216 TO OBTAIN GROUND DISTANCE.

ALL DISTANCES ARE BASED ON THE U.S. SURVEY FOOT.

VERTICAL DATUM

O.C.S. BM. 3C-22-71 ELEV. = 174.752' YEAR LEVELED: 2015
NAVD 1988 (O.C.S. 1995 ADJUSTMENT)

DESCRIPTION: MONUMENT IS SET IN KNOWN SUBSIDENCE ZONE AND MAY NOT FIT ADJACENT BENCHMARKS. DESCRIBED BY OCS 2001 - FOUND 3 3/4" OCS ALUMINUM BENCHMARK DISK STAMPED "3C-22-71", SET IN THE TOP OF A 4 IN. BY 4 IN. CONCRETE POST. MONUMENT IS LOCATED IN THE SOUTHEAST CORNER OF THE INTERSECTION OF LAMBETH WAY AND 17TH STREET, 43 FT. SOUTHERLY OF THE CENTERLINE OF 17TH STREET AND 42.6 FT. EASTERLY OF THE CENTERLINE OF LAMBETH WAY. MONUMENT IS SET UP 0.1 FT. FROM THE TOP OF CURB.

SHEET INDEX

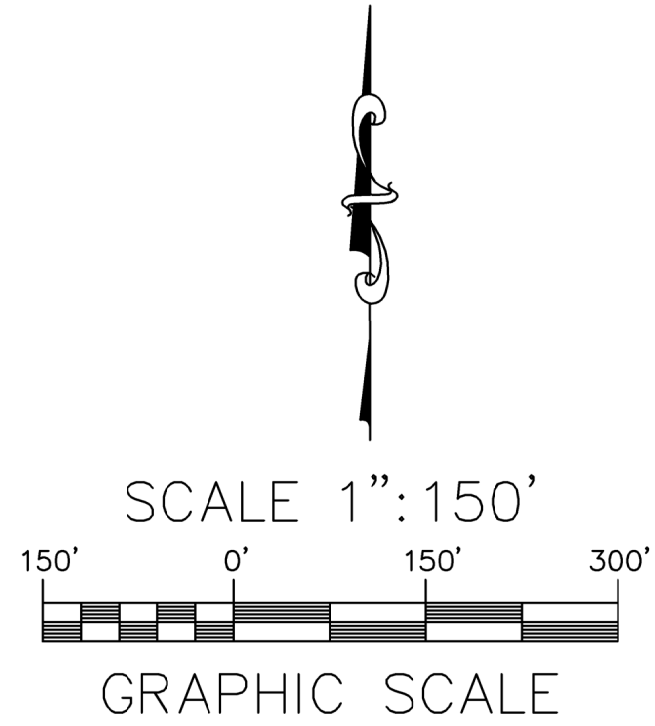
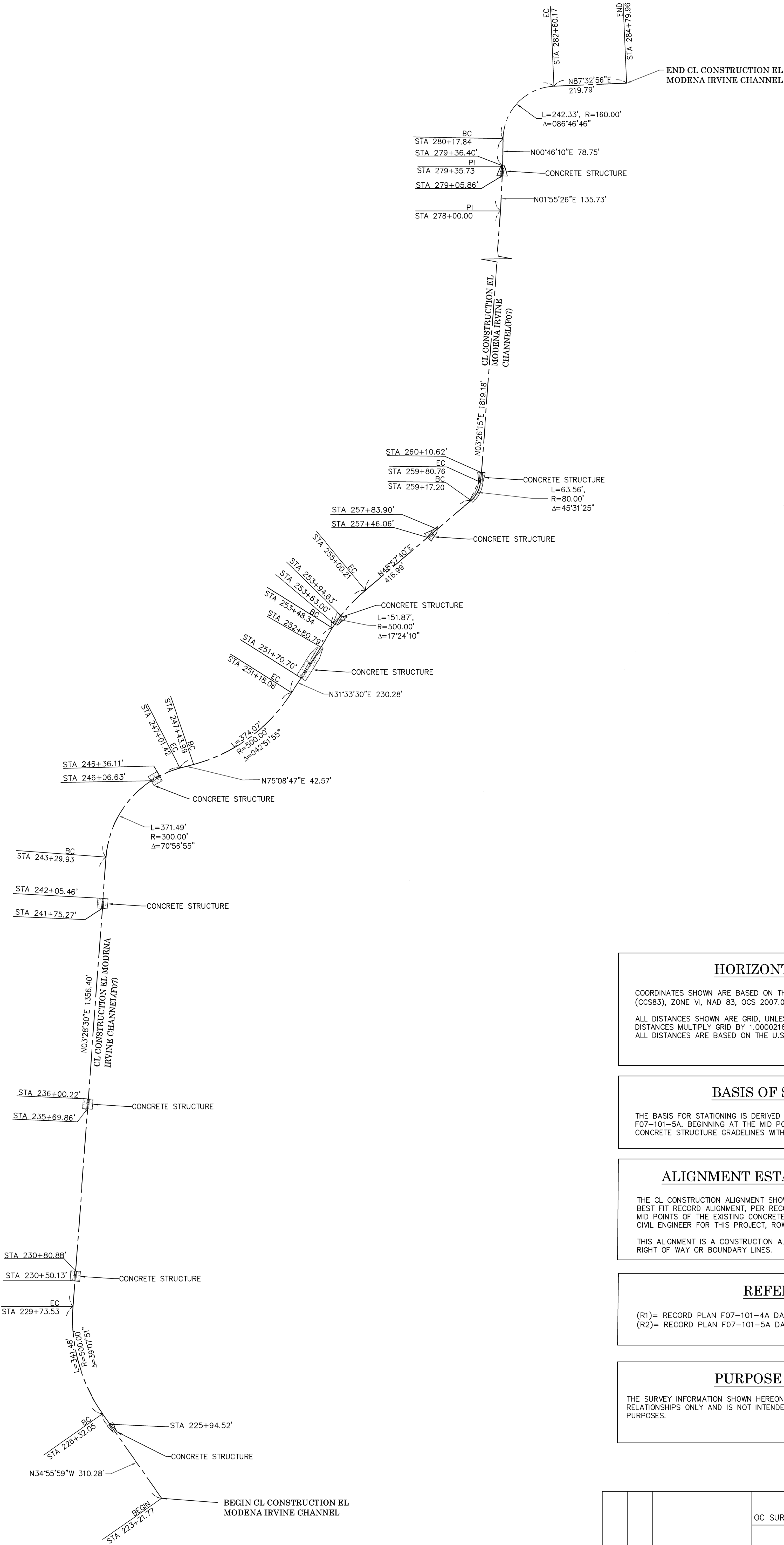
SHEET NO.	DESCRIPTION
SHEET #1	TITLE SHEET
SHEET #2	ALIGNMENT ESTABLISHMENT
SHEET #3	TOPOGRAPHIC MAP

PURPOSE OF SURVEY

THE SURVEY INFORMATION SHOWN HEREON IS TO BE USED FOR TOPOGRAPHIC RELATIONSHIPS ONLY AND IS NOT INTENDED FOR LAND ACQUISITION OR BOUNDARY PURPOSES.

COUNTY OF ORANGE OC PUBLIC WORKS/ENGINEERING SERVICES OC SURVEY/FIELD SERVICES/BOUNDARY ANALYSIS & MAPPING			
EL MODENA IRVINE CHANNEL (F07) TOPO SURVEY			
TITLE SHEET			
DATE OF SURVEY: 09-13-2019			
BY: RUSSO & PARTY			
TOPOGRAPHIC MAPPING			
BY: KARIM AHMED			
OFFICE CHECK			
BY: M. KUBISTY, PLS			
FIELD CHECK			
BY: J. RUSSO			
SCALE: N.T.S. WO#: EF21271			
FILE: #1920-1N0004			
FILE: ELMODENAIRVINE_TOPOGRAPHICMAP_2019.DWG			
MARK	DATE	ITEM	
REVISIONS			

SHEET NO.
1
of
3



HORIZONTAL DATUM

COORDINATES SHOWN ARE BASED ON THE CALIFORNIA COORDINATE SYSTEM (CCS83), ZONE VI, NAD 83, OCS 2007.0 EPOCH ADJUSTMENT.

ALL DISTANCES SHOWN ARE GRID, UNLESS OTHERWISE NOTED. TO OBTAIN GROUND DISTANCES MULTIPLY GRID BY 1.0000216

ALL DISTANCES ARE BASED ON THE U.S. SURVEY FOOT.

BASIS OF STATIONING

THE BASIS FOR STATIONING IS DERIVED FROM RECORD DRAWINGS F07-101-4A & F07-101-5A, BEGINNING AT THE MID POINT OF THE MOST SOUTHERLY EXISTING CONCRETE STRUCTURE GRADELINES WITH STATION 225+94.52 AS SHOWN HEREON.

ALIGNMENT ESTABLISHMENT NOTE

THE CL CONSTRUCTION ALIGNMENT SHOWN HEREON WAS DERIVED BY HOLDING A BEST FIT RECORD ALIGNMENT, PER RECORD PLANS LISTED BELOW, BETWEEN THE MID POINTS OF THE EXISTING CONCRETE STRUCTURES, PER DIRECTIVE FROM THE CIVIL ENGINEER FOR THIS PROJECT, ROWELL CASTRO RCE.

THIS ALIGNMENT IS A CONSTRUCTION ALIGNMENT ONLY AND IS NOT RELATED TO RIGHT OF WAY OR BOUNDARY LINES.

REFERENCES

(R1)= RECORD PLAN F07-101-4A DATED DECEMBER 1960

(R2)= RECORD PLAN F07-101-5A DATED MAY 1961

PURPOSE OF SURVEY

THE SURVEY INFORMATION SHOWN HEREON IS TO BE USED FOR TOPOGRAPHIC RELATIONSHIPS ONLY AND IS NOT INTENDED FOR LAND ACQUISITION OR BOUNDARY PURPOSES.

			COUNTY OF ORANGE OC PUBLIC WORKS/ENGINEERING SERVICES OC SURVEY/FIELD SERVICES/BOUNDARY ANALYSIS & MAPPING				
			EL MODENA IRVINE TOPO SURVEY				
			ALIGNMENT ESTABLISHMENT SHEET				
			LOCATION: EL MODENA CHANNEL, CITY OF TUSTIN, CA				
MARK	DATE	ITEM	DATE OF SURVEY: 09/13/2019		BY: J. RUSSO & PARTY		SHEET NO. 2 of 3
			TOPOGRAPHIC MAPPING		BY: K. AHMED		
			OFFICE CHECK		BY: M. KUBISTY PLS		
			FIELD CHECK		BY: W. WEAVER PLS		
			SCALE: 1"=150'		W.O. # EF21271		
REVISIONS		FILE #1920-1N0004		ELMODENA01SPILL_TOPOGRAPHICMAP_2019.dwg			

SHEET NO.
2 of 3

U.S. Survey
Foot

OC Public Works/Engineering Services
OC Survey/Field Services
Boundary Analysis & Mapping

FAIRHAVEN AVENUE

STA 279+35.73
PI
CONCRETE DRAINAGE STRUCTURE
TOP OF HEADWALL
EL.=227.10'
SOFFIT
EL.=222.66'
STA 279+05.86
CONC FL EL.=213.84'
RT CONC GL EL.=214.180'
LT CONC GL EL.=214.33'

STA 278+00.00
PI
4" PVC PIPE EXPOSED
INV EL.=222.13'
12"x18" CMP PIPE OUTLET
INV EL.=216.56'

RESIDENTIAL

CL CONSTRUCTION
EL MODENA IRVINE CHANNEL
(PER THIS SURVEY SEE ALIGNMENT SHEET 2
HEREIN)

12"x18" CMP PIPE OUTLET
INV EL.=213.71'

END CURRENT CONSTRUCTION

BEGIN CURRENT CONSTRUCTION

EL MODENA IRVI NE CHANNEL(F07)

EL MODENA IRVINE CHANNEL(F07)

MAINTENANCE ROAD

LEGEND

SYMBOL

- △ CPT Control Point
+ DGT Gate - Double
+ SGT Gate - Single
■ GRI Grate Inlet
⊕ LPL Light Pole - Single
PPO/PPI Pipe Outlet/Inlet
⊙ SNN Sign Post
□ CONC Concrete

LINE PATTERN KEY

- · · · · Bush Row Outline
- - - Centerline
- - - Edge of Concrete
- - - Edge of Asphalt Pavement
- X - X - Fence - Chain Link
- - - Flowline
- - - Guard Rail
- o - o - Hand Rail
- hp - Hinge Point
- - - Lot/ Easement Line
- - - Planter Wall
- - - Property Line
- - - Right-of-Way
- - - Wall - Concrete
- - - Wall - Stone

AREA PATTERN KEY

- Concrete
Dirt
Gravel
Rip-Rap

RESIDENTIAL



U.S. Survey
Foot

OC Public Works/Engineering Services
OC Survey/Field Services
Boundary Analysis & Mapping

SCALE 1"=30'



GRAPHIC SCALE

CONTOUR INTERVAL= 1'

CL CONSTRUCTION EL MODENA IRVINE CHANNEL
(PER THIS SURVEY SEE ALIGNMENT SHEET 2 HEREIN)

			COUNTY OF ORANGE OC PUBLIC WORKS OC SURVEY/FIELD SERVICES/BOUNDARY ANALYSIS & MAPPING			
			EL MODENA IRVINE CHANNEL TOPO SURVEY			
			TOPOGRAPHIC MAP			
			LOCATION: EL MODENA CHANNEL, CITY OF TUSTIN, CA			
			DATE OF SURVEY: 09/13/2019		BY: RUSSO & PARTY	
			TOPOGRAPHIC MAPPING		BY: K. AHMED	
			OFFICE CHECK		BY: M. KUBISTY, PLS	
			FIELD CHECK		BY: J. RUSSO	
			SCALE: 1" = 30'		W.O. #EF21271	
			FILE: ELMODENA_TOPOGRAPHICMAP_2019.DWG			
MARK	DATE	ITEM				
REVISIONS						
					SHEET NO. <div>3 of 3</div>	