



OC PUBLIC WORKS DEPARTMENT

JAMES TREADAWAY, DIRECTOR OF PUBLIC WORKS

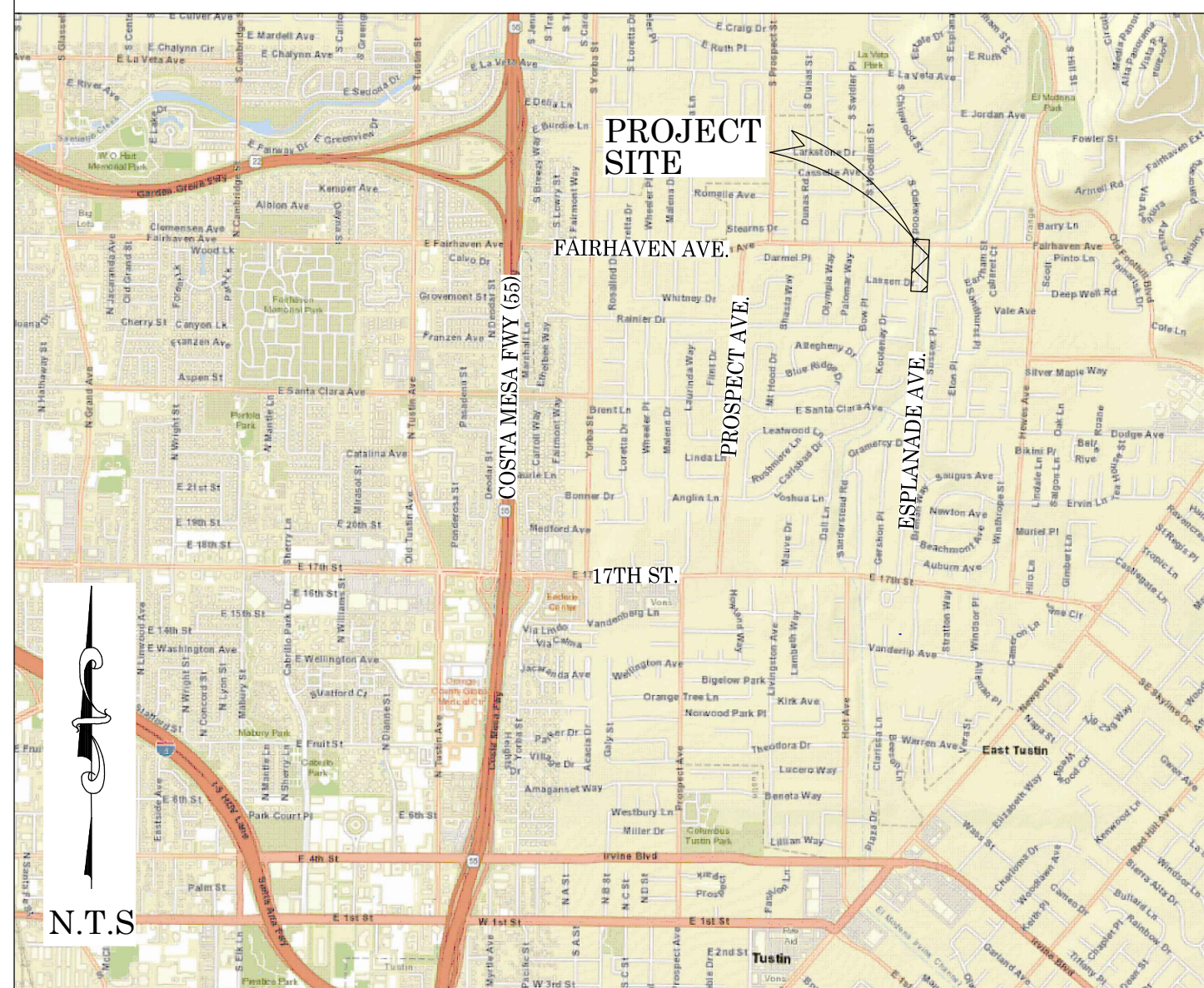
KEVIN HILLS, COUNTY SURVEYOR

EL MODENA CHANNEL (F07)

AS-BUILT



LOCATION MAP

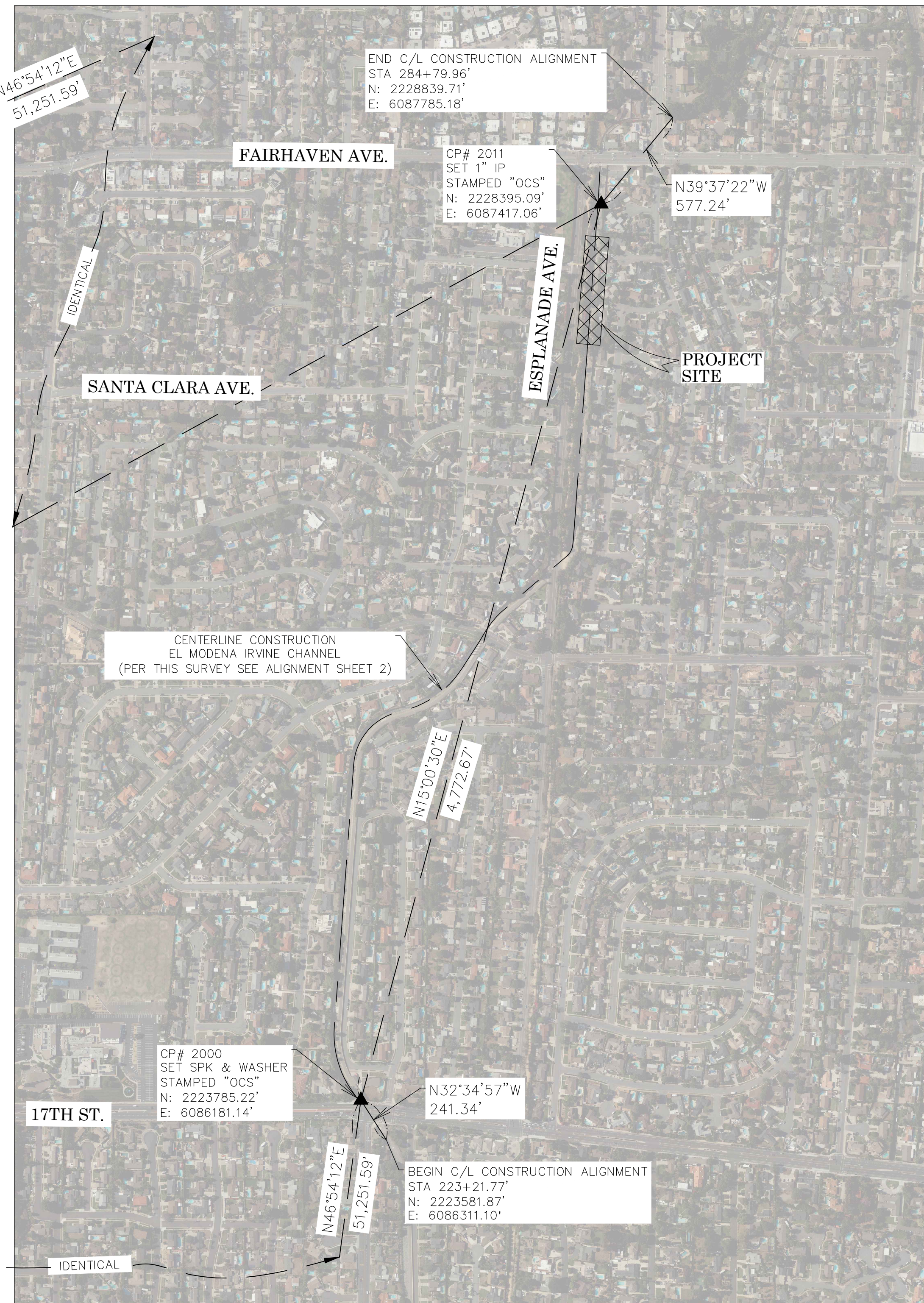


FD CGPS "SACY"
N: 2218015.22'
E: 6061433.12'
THIS IS AS CONTINUOUS GPS STATION
(CGPS) AND IS PART OF THE
CALIFORNIA SPATIAL REFERENCE
NETWORK (CSRN), FROM WHICH DATA
CAN BE DOWNLOADED HERE:
[HTTP://SOPACCsrc.ucsd.edu/](http://sopaccsrc.ucsd.edu/)

N.T.S

BASIS OF BEARINGS
N23°25'58"E 31,875.33'

FD CGPS "FVPK"
N: 2188768.54'
E: 6048757.12'
THIS IS AS CONTINUOUS GPS STATION (CGPS) AND IS PART OF
THE CALIFORNIA SPATIAL REFERENCE NETWORK (CSRN), FROM
WHICH DATA CAN BE DOWNLOADED HERE:
[HTTP://SOPACCsrc.ucsd.edu/](http://sopaccsrc.ucsd.edu/)



TOPOGRAPHIC MAPPING PROJECT

BASIS OF BEARINGS

THE BASIS OF BEARINGS FOR THIS SURVEY IS BASED ON THE CALIFORNIA COORDINATE SYSTEM (CCS83), ZONE VI, NAD 83, OCS (2017.50) EPOCH ADJUSTMENT, AS DETERMINED LOCALLY BY A LINE BETWEEN CONTINUOUS GLOBAL POSITIONING STATIONS CGPS STATIONS (FVFK) AND (SACY) BEING NORTH 23°25'58" EAST AS DERIVED FROM THE COORDINATES PUBLISHED BY THE CALIFORNIA SPATIAL REFERENCE CENTER (CSRN) ALONG WITH DATA SHEETS ON FILE IN THE OFFICE OF THE ORANGE COUNTY SURVEYOR.

HORIZONTAL DATUM

COORDINATES SHOWN ARE BASED ON THE CALIFORNIA COORDINATE SYSTEM (CCS83), ZONE VI, NAD 83, OCS (2017.50) EPOCH ADJUSTMENT.
ALL DISTANCES SHOWN ARE GRID, UNLESS OTHERWISE NOTED. TO OBTAIN GROUND DISTANCES MULTIPLY GRID BY A COMBINED FACTOR OF 1.0000216.

VERTICAL DATUM

O.C.S. BM. 3C-22-71 ELEV. = 174.752' YEAR LEVELED: 2015
NAVD 1988 (O.C.S. 1995 ADJUSTMENT)

DESCRIPTION: MONUMENT IS SET IN KNOWN SUBSIDENCE ZONE AND MAY NOT FIT ADJACENT BENCHMARKS. DESCRIBED BY OCS 2001 - FOUND 3 3/4" OCS ALUMINUM BENCHMARK DISK STAMPED "3C-22-71", SET IN THE TOP OF A 4 IN. BY 4 IN. CONCRETE POST. MONUMENT IS LOCATED IN THE SOUTHEAST CORNER OF THE INTERSECTION OF LAMBETH WAY AND 17TH STREET, 43 FT. SOUTHERLY OF THE CENTERLINE OF 17TH STREET AND 42.6 FT. EASTERLY OF THE CENTERLINE OF LAMBETH WAY. MONUMENT IS SET UP 0.1 FT. FROM THE TOP OF CURB.

NOTES

THE SURVEY INFORMATION SHOWN HEREON IS TO BE USED FOR TOPOGRAPHIC RELATIONSHIPS ONLY AND IS NOT INTENDED FOR LAND ACQUISITION OR BOUNDARY PURPOSES.
PARCELS SHOWN WITHOUT ANNOTATION ARE FOR GRAPHICAL PURPOSES.

SHEET INDEX

SHEET	NO.	DESCRIPTION
SHEET 1	1	TITLE SHEET
SHEET 2	2	ALIGNMENT SHEET
SHEETS 3	3	TOPOGRAPHIC MAP

PURPOSE OF SURVEY

THE PURPOSE OF THIS SURVEY IS TO PROVIDE AN AS-BUILT SURVEY FOR A PORTION OF THE EL MODENA CHANNEL WHERE HYDRO CARBONS WERE DISCOVERED DURING SLOPE REPAIR CONSTRUCTION IN 2020

SENIOR LAND SURVEYOR'S CERTIFICATE:

THIS MAP CORRECTLY REPRESENTS A SURVEY MADE BY ME OR UNDER MY DIRECTION IN CONFORMANCE WITH REQUIREMENTS OF THE PROFESSIONAL LAND SURVEYOR'S ACT; THIS 25TH DAY OF JANUARY, 2021.

MICHAEL KUBISTY, PLS. SENIOR LAND SURVEYOR



DEPUTY COUNTY SURVEYOR'S STATEMENT:

THIS MAP HAS BEEN EXAMINED IN ACCORDANCE WITH THE PROFESSIONAL LAND SURVEYOR'S ACT; THIS 25TH DAY OF JANUARY, 2021.

WADE WEAVER, PLS. DEPUTY COUNTY SURVEYOR



U.S. Survey
Foot

OC Public Works/Engineering Services
OC Survey/Field Services
Boundary Analysis & Mapping

COUNTY OF ORANGE
OC PUBLIC WORKS
OC SURVEY/FIELD SERVICES/BOUNDARY ANALYSIS & MAPPING

EL MODENA CHANNEL (F07)
AS-BUILT

TOPOGRAPHIC MAP

PROJECT LIMITS: FROM CONCRETE STRUCTURE AT FAIRHAVEN AVE TO 1000 FT D/S

DATE OF SURVEY: 01/10/2021 BY: J. RUSSO & PARTY

MAPPING BY: L. ISLAS

OFFICE CHECK BY: M. KUBISTY, PLS.

FIELD CHECK BY: J. RUSSO

SCALE: N.T.S. W.O. #EF21271 FILE #1920-IN0004

FILE: EL MODENA CHANNEL_TOPO_2020.DWG

SHEET NO.

1

of

3

SYMBOL


△ Control Point


ABBREVIATION

CP Control Point

EL Elevation

AREA PATTERN KEY

 Concrete

 Rip Rap

LINE PATTERN KEY

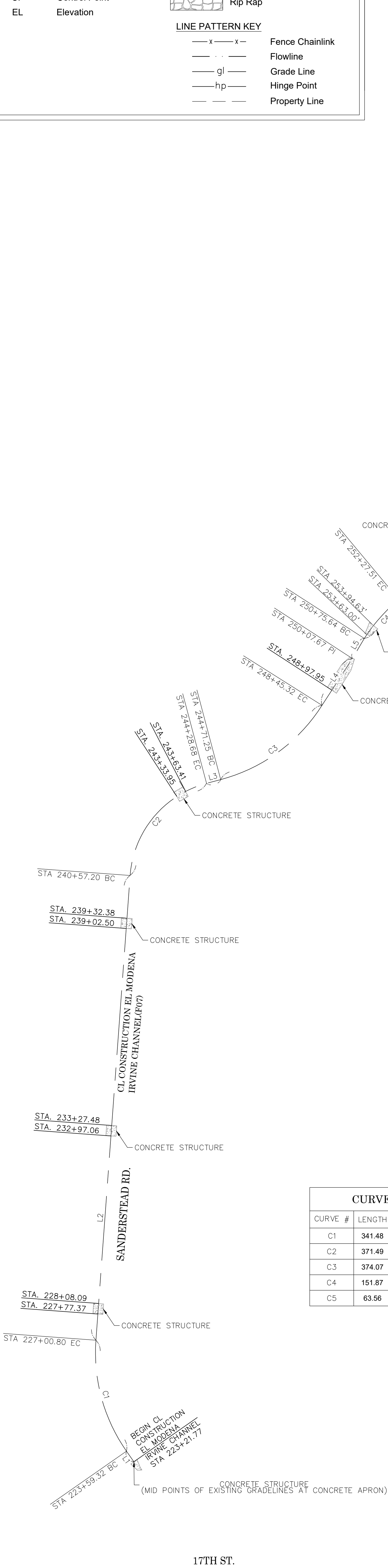
—x—x— Fence Chainlink

— · — · — Flowline

—gl— Grade Line

—hp— Hinge Point

— — — Property Line



CURVE TABLE				
CURVE #	LENGTH	RADIUS	DELTA	
C1	341.48	500.00	039°07'51"	
C2	371.49	300.00	070°56'55"	
C3	374.07	500.00	042°51'55"	
C4	151.87	500.00	017°24'10"	
C5	63.56	80.00	045°31'25"	

LINE TABLE		
LINE #	BEARING	MEASURED DISTANCE
L1	N34°55'59"W	37.55
L2	N04°11'52"E	1356.40
L3	N75°08'47"E	42.57
L4	N32°57'19"E	162.34
L5	N30°40'16"E	67.98
L6	N49°34'18"E	416.99
L7	N06°33'17"E	29.22
L8	N04°11'40"E	1790.05
L9	N02°43'07"E	105.86

BASIS OF STATIONING

THE BASIS OF STATIONING FOR THE CONSTRUCTION ALIGNMENT SHOWN HEREON WAS DERIVED BY HOLDING A STATION OF 223+21.77 PER (R1) & (R2) AT THE MIDPOINT OF THE EXISTING S'LY CONCRETE STRUCTURES GRADELINES AND THE FACE OF ITS CONCRETE APRON, INCREASING N'LY THEREFROM.

ALIGNMENT ESTABLISHMENT NOTE

THE CL CONSTRUCTION ALIGNMENT SHOWN HEREON WAS DERIVED BY HOLDING A BEST FIT RECORD ALIGNMENT PER (R1) & (R2) BETWEEN THE MID POINTS OF THE EXISTING CONCRETE STRUCTURES GRADELINES, AND THE FACE OF THEIR CONCRETE APRONS.

REFERENCES

(R1)= RECORD PLAN F07-101-4A DATED DECEMBER 1960
(R2)= RECORD PLAN F07-101-5A DATED MAY 1961

U.S. Survey Foot

OC Public Works/Engineering Services
OC Survey/Field Services
Boundary Analysis & Mapping

			COUNTY OF ORANGE OC PUBLIC WORKS OC SURVEY/FIELD SERVICES/BOUNDARY ANALYSIS & MAPPING			
			EL MODENA CHANNEL (F07) AS-BUILT			
			TOPOGRAPHIC MAP			
			PROJECT LIMITS: FROM CONCRETE STRUCTURE AT FAIRHAVEN AVE TO 1000 FT D/S			
			DATE OF SURVEY: 01/10/2021		BY: J. RUSSO & PARTY	
			MAPPING		BY: I. ISLAS	
MARK	DATE	ITEM	OFFICE CHECK		BY: M. KUBISTY, PLS	SHEET NO. 2 of 3
			FIELD CHECK		BY: J. RUSSO	
			SCALE: 1"=150'		W.O. #EF21271	
			FILE #1920-1N0004			
REVISIONS			FILE: EL MODENA_CHANNEL_TOPO_2020.DWG			

SYMBOL

△ Control Point

ABBREVIATION

CP Control Point

EL Elevation

LEGEND

AREA PATTERN KEY

Concrete

Rip Rap

LINE PATTERN KEY

— x — x — Fence Chainlink

— · — · — Flowline

— gl — Grade Line

— hp — Hinge Point

— — — Property Line

NOTE:
STATIONS 271+00 TO 75+00 REPRESENT THE AREA OF SLOPE REPAIR WHERE HYDROCARBONS WERE DISCOVERED. THIS AS-BUILT REPRESENTS FINAL CONDITIONS AFTER OVER "X" EXCAVATION AND CONSTRUCTION WAS COMPLETED.

U.S. Survey Foot

OC Public Works/Engineering Services
OC Survey/Field Services
Boundary Analysis & Mapping

COUNTY OF ORANGE OC PUBLIC WORKS OC SURVEY/FIELD SERVICES/BOUNDARY ANALYSIS & MAPPING		
EL MODENA CHANNEL (F07) AS-BUILT		
TOPOGRAPHIC MAP		
PROJECT LIMITS: FROM CONCRETE STRUCTURE AT FAIRHAVEN AVE TO 1000 FT D/S		
DATE OF SURVEY: 01/10/2021	BY: J. RUSSO & PARTY	SHEET NO.
MAPPING	BY: L. ISLAS	
OFFICE CHECK	BY: M. KUBISTY, PLS	3 of 3
FIELD CHECK	BY: J. RUSSO	
SCALE: 1"=20'	W.O. #EF21271	FILE #1920-IN0004
FILE: EL MODENA_CHANNEL_TOPO_2020.DWG		
REVISIONS		
MARK	DATE	ITEM