



OC PUBLIC WORKS DEPARTMENT

JAMES TREADAWAY, DIRECTOR OF PUBLIC WORKS

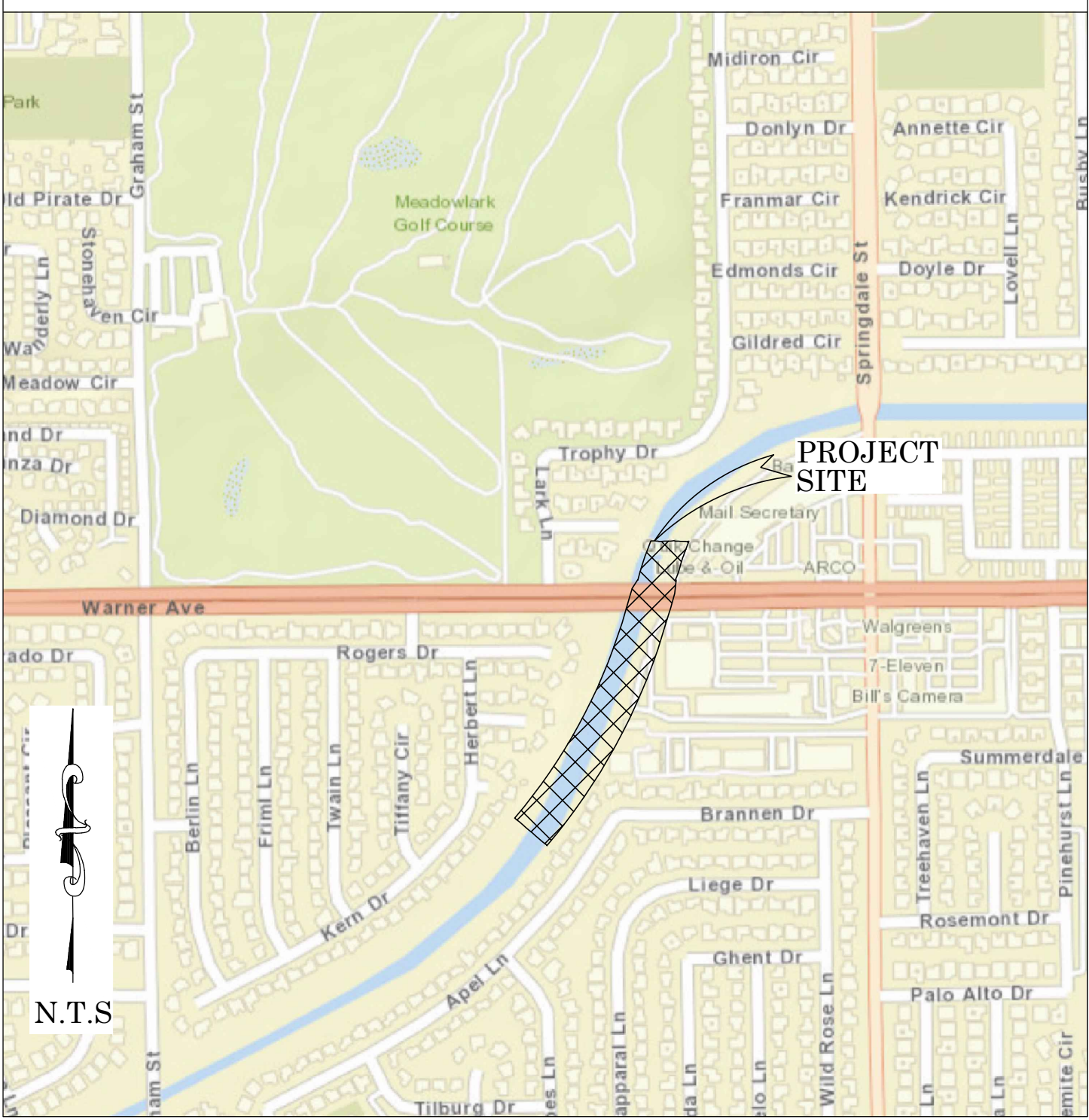
KEVIN HILLS, COUNTY SURVEYOR

EAST GARDEN GROVE WINTERSBURG CHANNEL (C05)



SEDIMENT REMOVAL

LOCATION MAP



N.T.S.



BASIS OF BEARINGS

THE BASIS OF BEARINGS FOR THIS SURVEY IS BASED ON THE CALIFORNIA COORDINATE SYSTEM (CCS83), ZONE VI, NAD 83, OCS (2007.00) EPOCH ADJUSTMENT, AS DETERMINED LOCALLY BY A LINE BETWEEN CONTINUOUS GLOBAL POSITIONING STATIONS CGPS STATIONS (FVPK) AND (BLSA) BEING NORTH 28°33'39\"/>

HORIZONTAL DATUM

COORDINATES SHOWN ARE BASED ON THE CALIFORNIA COORDINATE SYSTEM (CCS83), ZONE VI, NAD 83, OCS (2007.00) EPOCH ADJUSTMENT.
ALL DISTANCES SHOWN ARE GRID, UNLESS OTHERWISE NOTED, TO OBTAIN GROUND DISTANCES MULTIPLY GRID BY A COMBINED FACTOR OF 1.00001904.
ALL DISTANCES ARE BASED ON THE U.S. SURVEY FOOT.

VERTICAL DATUM

NAVD 1988 (O.C.S. 1995 ADJUSTMENT)
O.C.S. BM. 1D-78-69 ELEV. = 14.943' YEAR LEVELED: 2005
DESCRIPTION: FOUND 3 3/4\"/>

NOTES

THE SURVEY INFORMATION SHOWN HEREON IS TO BE USED FOR TOPOGRAPHIC RELATIONSHIPS ONLY AND IS NOT INTENDED FOR LAND ACQUISITION OR BOUNDARY PURPOSES.

SHEET INDEX

SHEET	NO.	DESCRIPTION
SHEET	1	TITLE SHEET
SHEET	2	ALIGNMENT SHEET
SHEETS	3-4	TOPOGRAPHIC MAP
SHEET	5	PROFILE

BASIS OF STATIONING

THE BASIS OF STATIONING FOR THE CENTERLINE ALIGNMENT SHOWN HEREIN WAS 100+56.70 HELD AT THE CENTERLINE INTERSECTION OF THE C05 CHANNEL & WARNER AVE. PER RECORD DRAWINGS NO. C05-101-12 DATED 6/11/2012

PURPOSE OF SURVEY

THE PURPOSE OF THE SURVEY IS TO PROVIDE A TOPOGRAPHIC MAP, SECTIONS, AND VOLUME REPORT FOR THIS PORTION OF THE WINTERSBURG CHANNEL (C05).

SENIOR LAND SURVEYOR'S CERTIFICATE:

THIS MAP CORRECTLY REPRESENTS A SURVEY MADE BY ME OR UNDER MY DIRECTION IN CONFORMANCE WITH REQUIREMENTS OF THE PROFESSIONAL LAND SURVEYOR'S ACT; THIS 18 DAY OF NOVEMBER, 2021.



MICHAEL KUBISTY, PLS. SENIOR LAND SURVEYOR

DEPUTY COUNTY SURVEYOR'S STATEMENT:

THIS MAP HAS BEEN EXAMINED IN ACCORDANCE WITH THE PROFESSIONAL LAND SURVEYOR'S ACT; THIS 18 DAY OF NOVEMBER, 2021.



WADE WEAVER, PLS. DEPUTY COUNTY SURVEYOR

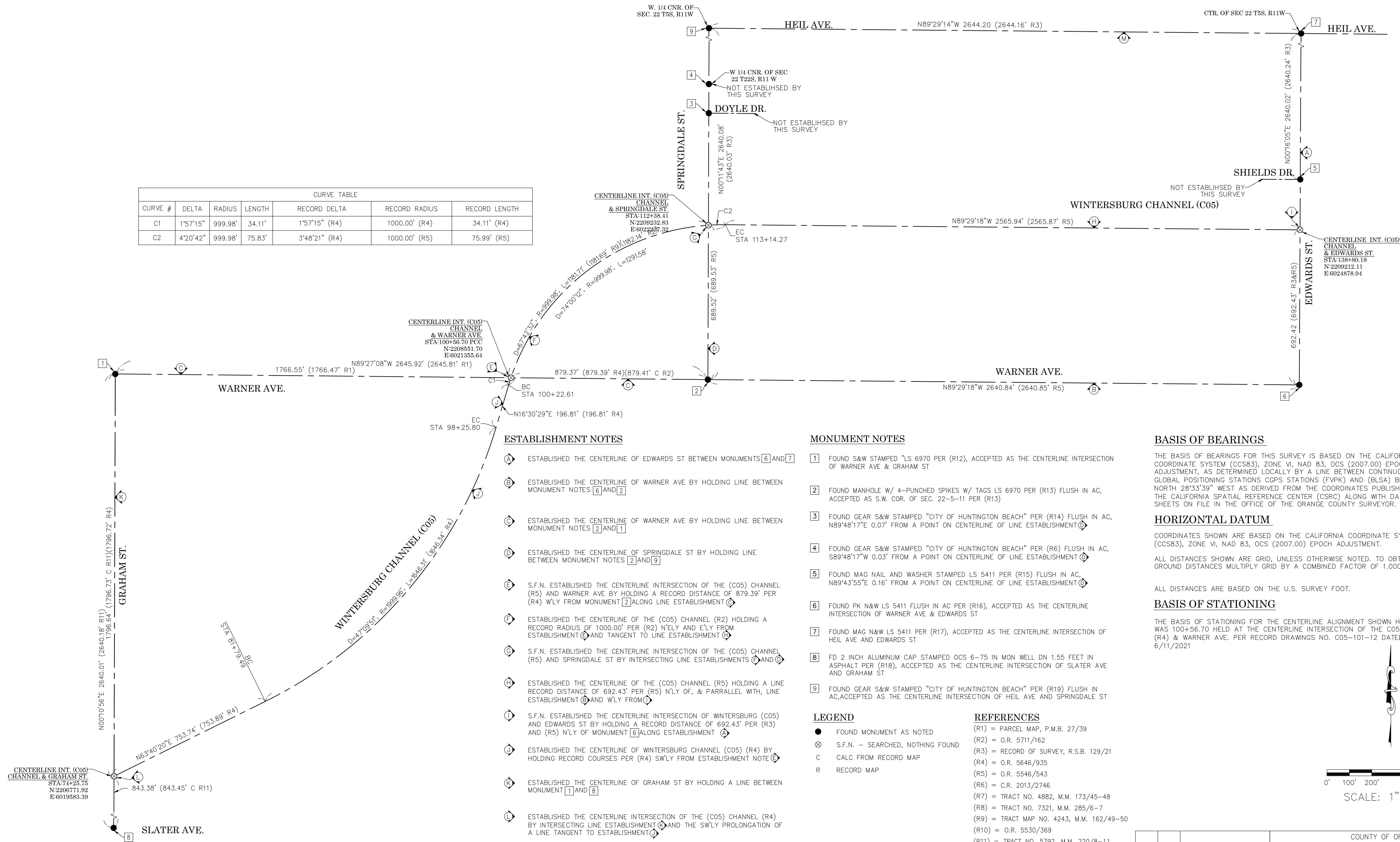
U.S. Survey Foot

OC Public Works
OC Survey/Field Services
Boundary Analysis & Mapping

TOPOGRAPHIC MAPPING PROJECT

COUNTY OF ORANGE OC PUBLIC WORKS OC SURVEY/FIELD SERVICES/BOUNDARY ANALYSIS & MAPPING			
EAST GARDEN GROVE WINTERSBURG CHANNEL (C05) SEDIMENT REMOVAL			
TITLE SHEET			
PROJECT LIMITS: C05 FROM UNDER WARNER BRIDGE TO 1000' DOWNSTREAM OF BRIDGE			
DATE OF SURVEY: 09/24/2021	BY: T. LOFGREEN & CREW	SHEET NO.	
MAPPING	BY: I. ISLAS	1	
OFFICE CHECK	BY: J. MORENO, PLS	of	
FIELD CHECK	BY: T. LOFGREEN	5	
SCALE: N.T.S.	W.O. #EF21234	FILE #2021PW-PM0010	
FILE: WINTERSBURG CHANNEL (C05)_TOPO_2021.DWG			




CURVE TABLE						
CURVE #	DELTA	RADIUS	LENGTH	RECORD DELTA	RECORD RADIUS	RECORD LENGTH
C1	1°57'15"	999.98'	34.11'	1°57'15" (R4)	1000.00' (R4)	34.11' (R4)
C2	4°20'42"	999.98'	75.83'	3°48'21" (R4)	1000.00' (R5)	75.99' (R5)



ESTABLISHMENT NOTES

- ESTABLISHED THE CENTERLINE OF EDWARDS ST BETWEEN MONUMENTS [6] AND [2]
- ESTABLISHED THE CENTERLINE OF WARNER AVE BY HOLDING LINE BETWEEN MONUMENT NOTES [6] AND [2]
- ESTABLISHED THE CENTERLINE OF WARNER AVE BY HOLDING LINE BETWEEN MONUMENT NOTES [2] AND [1]
- ESTABLISHED THE CENTERLINE OF SPRINGDALE ST BY HOLDING LINE BETWEEN MONUMENT NOTES [2] AND [9]
- S.F.N. ESTABLISHED THE CENTERLINE INTERSECTION OF THE (C05) CHANNEL (R5) AND WARNER AVE BY HOLDING A RECORD DISTANCE OF 879.39' PER (R4) W'LY FROM MONUMENT [2] ALONG LINE ESTABLISHMENT [6]
- ESTABLISHED THE CENTERLINE OF THE (C05) CHANNEL (R2) HOLDING A RECORD RADIUS OF 1000.00' PER (R2) N'E'LY AND E'LY FROM ESTABLISHMENT [6] AND TANGENT TO LINE ESTABLISHMENT [6]
- S.F.N. ESTABLISHED THE CENTERLINE INTERSECTION OF THE (C05) CHANNEL (R5) AND SPRINGDALE ST BY INTERSECTING LINE ESTABLISHMENTS [6] AND [6]
- ESTABLISHED THE CENTERLINE OF THE (C05) CHANNEL (R5) HOLDING A LINE RECORD DISTANCE OF 692.43' PER (R5) N'LY OF, & PARRALLEL WITH, LINE ESTABLISHMENT [6] AND W'LY FROM [6]
- S.F.N. ESTABLISHED THE CENTERLINE INTERSECTION OF WINTERSBURG (C05) AND EDWARDS ST BY HOLDING A RECORD DISTANCE OF 692.43' PER (R3) AND (R5) N'LY OF MONUMENT [6] ALONG ESTABLISHMENT [6]
- ESTABLISHED THE CENTERLINE OF WINTERSBURG CHANNEL (C05) (R4) BY HOLDING RECORD COURSES PER (R4) SW'LY FROM ESTABLISHMENT NOTE [6]
- ESTABLISHED THE CENTERLINE OF GRAHAM ST BY HOLDING A LINE BETWEEN MONUMENT [1] AND [8]
- ESTABLISHED THE CENTERLINE INTERSECTION OF THE (C05) CHANNEL (R4) BY INTERSECTING LINE ESTABLISHMENT [6] AND THE SW'LY PROLONGATION OF A LINE TANGENT TO ESTABLISHMENT [6]
- ESTABLISHED THE CENTERLINE OF HEIL AVE BY HOLDING LINE BETWEEN MONUMENT NOTES [9] AND [7]

MONUMENT NOTES

- 1 FOUND S&W STAMPED "LS 6970 PER (R12), ACCEPTED AS THE CENTERLINE INTERSECTION OF WARNER AVE & GRAHAM ST
- 2 FOUND MANHOLE W/ 4-PUNCHED SPIKES W/ TAGS LS 6970 PER (R13) FLUSH IN AC, ACCEPTED AS S.W. COR. OF SEC. 22-5-11 PER (R13)
- 3 FOUND GEAR S&W STAMPED "CITY OF HUNTINGTON BEACH" PER (R14) FLUSH IN AC, N89°48'17"E 0.07' FROM A POINT ON CENTERLINE OF LINE ESTABLISHMENT 
- 4 FOUND GEAR S&W STAMPED "CITY OF HUNTINGTON BEACH" PER (R6) FLUSH IN AC, S89°48'17"W 0.03' FROM A POINT ON CENTERLINE OF LINE ESTABLISHMENT 
- 5 FOUND MAG NAIL AND WASHER STAMPED LS 5411 PER (R15) FLUSH IN AC, N89°43'55"E 0.16' FROM A POINT ON CENTERLINE OF LINE ESTABLISHMENT 
- 6 FOUND PK N&W LS 5411 FLUSH IN AC PER (R16), ACCEPTED AS THE CENTERLINE INTERSECTION OF WARNER AVE & EDWARDS ST
- 7 FOUND MAG N&W LS 5411 PER (R17), ACCEPTED AS THE CENTERLINE INTERSECTION OF HEIL AVE AND EDWARDS ST
- 8 FD 2 INCH ALUMINUM CAP STAMPED OCS 6-75 IN MON WELL DN 1.55 FEET IN ASPHALT PER (R18), ACCEPTED AS THE CENTERLINE INTERSECTION OF SLATER AVE AND GRAHAM ST
- 9 FOUND GEAR S&W STAMPED "CITY OF HUNTINGTON BEACH" PER (R19) FLUSH IN AC, ACCEPTED AS THE CENTERLINE INTERSECTION OF HEIL AVE AND SPRINGDALE ST

LEGEND

- FOUND MONUMENT AS NOTED
 ⊗ S.F.N. - SEARCHED, NOTHING FOUND
 C CALC FROM RECORD MAP
 R RECORD MAP

REFERENCES

- (R1) = PARCEL MAP, P.M.B. 27/39
(R2) = O.R. 5711/162
(R3) = RECORD OF SURVEY, R.S.B. 129/21
(R4) = O.R. 5646/935
(R5) = O.R. 5546/543
(R6) = C.R. 2013/2746
(R7) = TRACT NO. 4882, M.M. 173/45-48
(R8) = TRACT NO. 7321, M.M. 285/6-7
(R9) = TRACT MAP NO. 4243, M.M. 162/49-50
(R10) = O.R. 5530/369
(R11) = TRACT NO. 5792, M.M. 220/8-11
(R12) = C.R. 2004/1381B
(R13) = C.R. 2004/1383B
(R14) = C.R. 2013/2745
(R15) = C.R. 2005/0823
(R16) = C.R. 2004/0149B
(R17) = C.R. 2016/0635
(R18) = C.R. 2019/0971A
(R19) = C.R. 2013/2748

BASIS OF BEARINGS

THE BASIS OF BEARINGS FOR THIS SURVEY IS BASED ON THE CALIFORNIA COORDINATE SYSTEM (CCS83), ZONE VI, NAD 83, OCS (2007.00) EPOCH ADJUSTMENT, AS DETERMINED LOCALLY BY A LINE BETWEEN CONTINUOUS GLOBAL POSITIONING STATIONS CGPS STATIONS (FVPK) AND (BSLA) BEING NORTH 28°33'39" WEST AS DERIVED FROM THE COORDINATES PUBLISHED BY THE CALIFORNIA SPATIAL REFERENCE CENTER (CSRC) ALONG WITH DATA SHEETS ON FILE IN THE OFFICE OF THE ORANGE COUNTY SURVEYOR.

HORIZONTAL DATUM

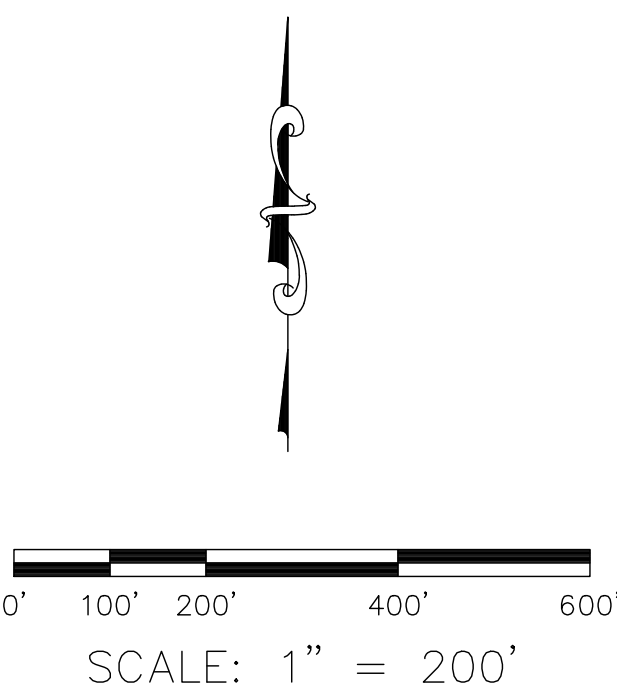
COORDINATES SHOWN ARE BASED ON THE CALIFORNIA COORDINATE SYSTEM (CCS83), ZONE VI, NAD 83, OCS (2007.00) EPOCH ADJUSTMENT.

ALL DISTANCES SHOWN ARE GRID, UNLESS OTHERWISE NOTED. TO OBTAIN GROUND DISTANCES MULTIPLY GRID BY A COMBINED FACTOR OF 1.00001904.

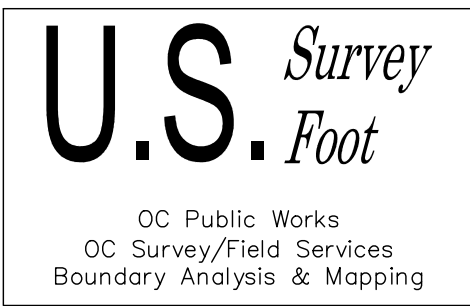
ALL DISTANCES ARE BASED ON THE U.S. SURVEY FOOT.

BASIS OF STATIONING

THE BASIS OF STATIONING FOR THE CENTERLINE ALIGNMENT SHOWN HEREON
WAS 100+56.70 HELD AT THE CENTERLINE INTERSECTION OF THE C05 CHANNEL
(R4) & WARNER AVE. PER RECORD DRAWINGS NO. C05-101-12 DATED
6/11/2021



			COUNTY OF ORANGE OC PUBLIC WORKS OC SURVEY/FIELD SERVICES/BOUNDARY ANALYSIS & MAPPING		
			EAST GARDEN GROVE WINTERSBURG CHANNEL (C05)		
			SEDIMENT REMOVAL		
			ALIGNMENT ESTABLISHMENT SHEET		
			PROJECT LIMITS: C05 FROM UNDER WARNER BRIDGE TO 1000' DOWNSTREAM OF BRIDGE		
MARK	DATE	ITEM	DATE OF SURVEY: 09/24/2021		SHEET NO. 2 of 5
			MAPPING		
			OFFICE CHECK		
			FIELD CHECK		
		REVISIONS	SCALE: 1"=200'	W.O. # EF21234	FILE # 2021PW-PM0010
			FILE: WINTERSBURG CHANNEL (C05)_ALIGNMENT_2021.DWG		



SYMBOL

Control Point

Pier Column

LINE PATTERN KEY

Centerline

Concrete Wall

Flowline

Grade Line/Face of Wall

Right of Way

AREA PATTERN KEY

Concrete

Dirt

ABBREVIATION

CL

Centerline

CP

Control Point

EL

Elevation

FL

Flowline

FD

Found

SEE SHEET 4

STA 95+43.00

APN 163-091-22
5772 WHISTLER CIR

APN 163-091-23
5752 WHISTLER CIR

APN 163-091-27
5741 RENOIR CIR

APN 163-091-28
5742 RENOIR CIR

APN 163-091-29
5732 RENOIR CIR

APN 163-091-30
5722 KERN DR

WINTERSBURG CHANNEL (C05)

APN 163-091-21
5781 WHISTLER CIR

APN 163-080-04
17101 SPRINGDALE ST

APN 163-071-10
5811 BRANNEN DR

APN 163-071-09
17151 APEL LN

APN 163-071-08
17161 APEL LN

APN 163-071-06
17171 APEL LN

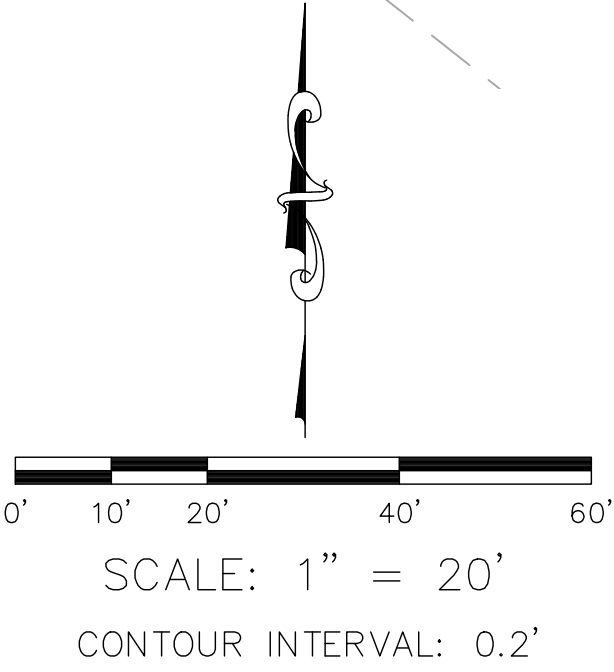
APN 163-071-05
17181 APEL LN

APN 163-071-04
17191 APEL LN

APN 163-071-03
17201 APEL LN

BEGIN CONSTRUCTION
ALIGNMENT PER THIS
SURVEY AT CHANNEL C/L
STA: 89+95.16
N: 2207605.0690
E: 6020897.1656

BEGIN CENTERLINE
CHANNEL ALIGNMENT
(PER THIS SURVEY)



U.S. Survey
Foot

OC Public Works
OC Survey/Field Services
Boundary Analysis & Mapping

			COUNTY OF ORANGE OC PUBLIC WORKS OC SURVEY/FIELD SERVICES/BOUNDARY ANALYSIS & MAPPING			
			EAST GARDEN GROVE WINTERSBURG CHANNEL (C05) SEDIMENT REMOVAL			
			TOPOGRAPHIC MAP			
			PROJECT LIMITS: C05 FROM UNDER WARNER BRIDGE TO 1000' DOWNSTREAM OF BRIDGE			
			DATE OF SURVEY: 09/24/2021	BY: T. LOFGREEN & CREW	SHEET NO. 3 of 5	
			MAPPING	BY: I. ISLAS		
			OFFICE CHECK	BY: J. MORENO, PLS		
			FIELD CHECK	BY: T. LOFGREEN		
MARK	DATE	ITEM	SCALE: 1"=20'	W.O. #EF21234	FILE #2021PW-PM0010	
REVISIONS			FILE: WINTERSBURG CHANNEL (C05)_TOPO_2021.DWG			

LEGEND

SYMBOL

- Control Point
- Pier Column

AREA PATTERN KEY

- Concrete
- Dirt

LINE PATTERN KEY

- Centerline
- Concrete Wall
- Flowline
- Grade Line/Face of Wall
- Right of Way

ABBREVIATION

- CL Centerline
- CP Control Point
- EL Elevation
- FL Flowline
- FD Found



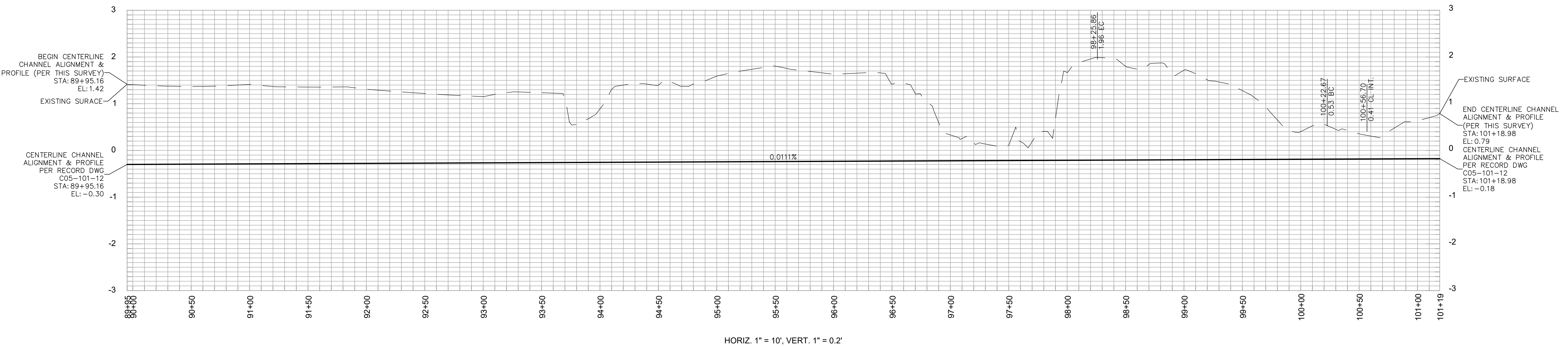
STA 95+43.00
SEE SHEET 3

U.S. Survey
Foot

OC Public Works
OC Survey/Field Services
Boundary Analysis & Mapping

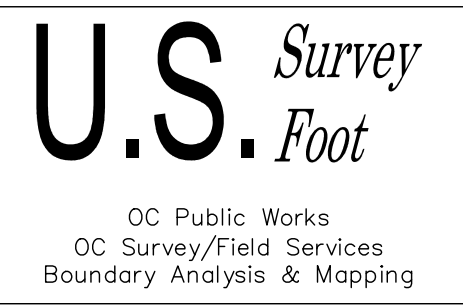
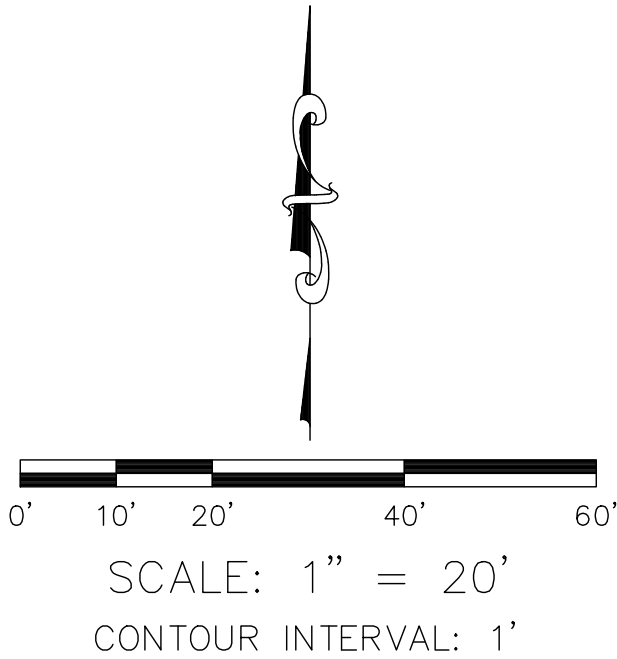
			COUNTY OF ORANGE OC PUBLIC WORKS OC SURVEY/FIELD SERVICES/BOUNDARY ANALYSIS & MAPPING			
			EAST GARDEN GROVE WINTERSBURG CHANNEL (C05) SEDIMENT REMOVAL			
			TOPOGRAPHIC MAP			
			PROJECT LIMITS: C05 FROM UNDER WARNER BRIDGE TO 1000' DOWNSTREAM OF BRIDGE			
			DATE OF SURVEY: 09/24/2021		BY: T. LOFGREEN & CREW	SHEET NO. 4 of 5
			MAPPING		BY: J. ISLAS	
			OFFICE CHECK		BY: J. MORENO, PLS	
			FIELD CHECK		BY: T. LOFGREEN	
MARK	DATE	ITEM	SCALE: 1"=20'		W.O. #EF21234	FILE # 2021PW-PM0010
REVISIONS			FILE: WINTERSBURG CHANNEL (C05)_TOPO_2021.DWG			

PROFILE OF EAST GARDEN GROVE WINTERSBURG CHANNEL (C05)



NOTE: THE BASIS OF STATIONING FOR THE CENTERLINE ALIGNMENT SHOWN HEREIN WAS 100+56.70 HELD AT THE CENTERLINE INTERSECTION OF THE C05 CHANNEL & WARNER AVE. PER RECORD DRAWINGS NO. C05-101-12 DATED 6/11/2012

RECORD PLAN ELEVATIONS SHOWN HEREIN WERE CONVERTED TO NAVD1988 DATUM BY A FACTOR OF + 2.42'



		COUNTY OF ORANGE OC PUBLIC WORKS OC SURVEY/FIELD SERVICES/BOUNDARY ANALYSIS & MAPPING					
		EAST GARDEN GROVE WINTERSBURG CHANNEL (C05) SEDIMENT REMOVAL					
		PROFILE					
		PROJECT LIMITS: C05 FROM UNDER WARNER BRIDGE TO 1000' DOWNSTREAM OF BRIDGE					
		DATE OF SURVEY: 09/24/2021		BY: T. LOFGREEN & CREW		SHEET NO. 5 of 5	
		MAPPING		BY: I. ISLAS			
		OFFICE CHECK		BY: J. MORENO, PLS			
		FIELD CHECK		BY: T. LOFGREEN			
MARK	DATE	ITEM		SCALE: 1" = XX'		W.O. #EF21234	FILE #2021PW-PM0010
		REVISIONS		FILE: WINTERSBURG CHANNEL (C05)_TOPO_2021.DWG			