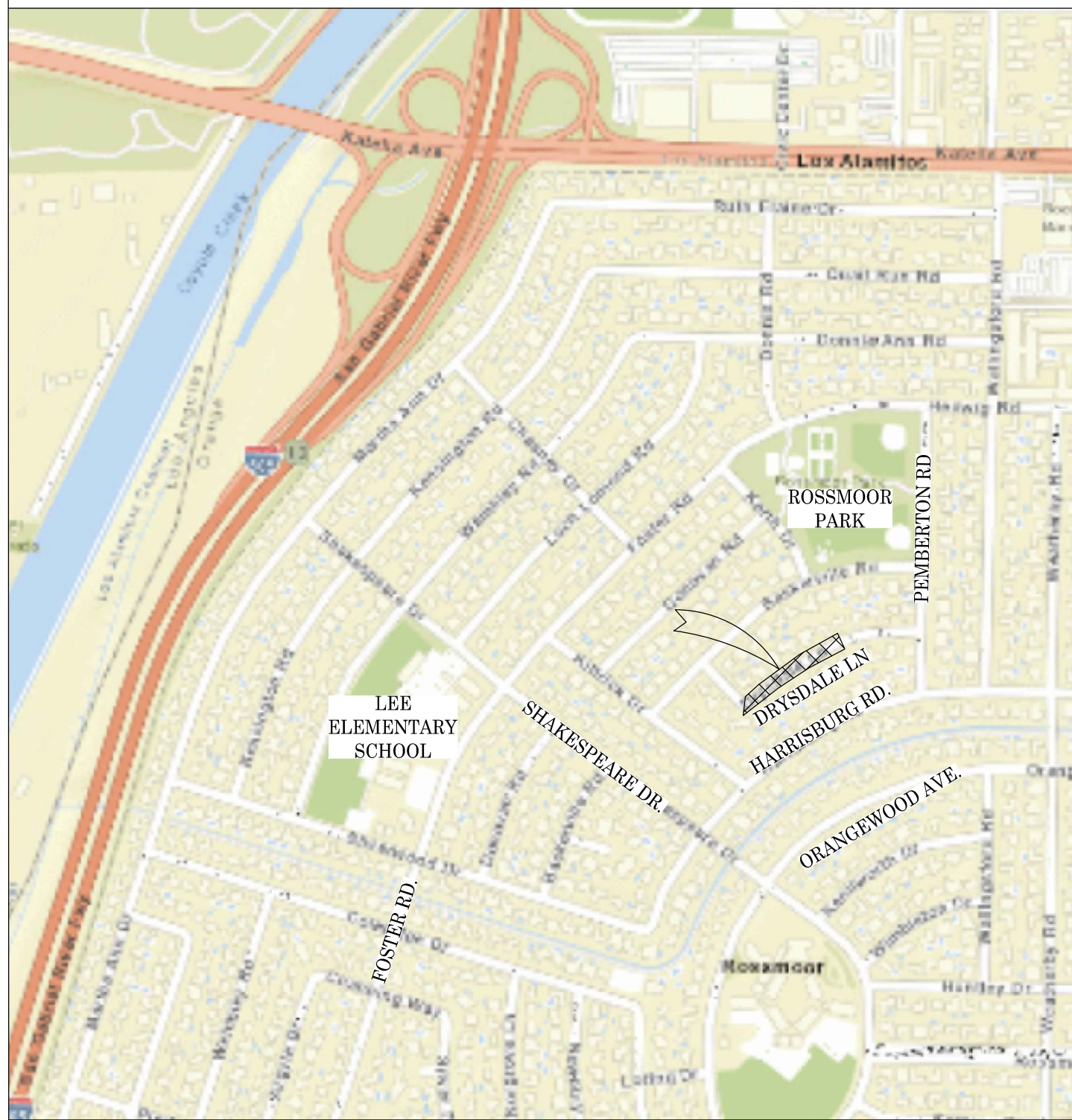




OC PUBLIC WORKS DEPARTMENT
JAMES TREADAWAY, DIRECTOR OF PUBLIC WORKS
KEVIN HILLS, COUNTY SURVEYOR
DRYSDALE LN.
ROAD MAINTENANCE



LOCATION MAP



FOUND CGPS "LBC1"
N: 2251578.40'
E: 5988579.34'
THIS IS A CONTINUOUS GPS STATION
(CGPS) AND IS PART OF THE CALIFORNIA
SPATIAL REFERENCE NETWORK (CSRN),
FROM WHICH DATA CAN BE DOWNLOADED
HERE: [HTTP://SOPACCSRC.UCSD.EDU/](http://sopaccsrc.ucsd.edu/).

N.T.S



BASIS OF BEARINGS

THE BASIS OF BEARINGS FOR THIS SURVEY IS BASED ON THE CALIFORNIA COORDINATE SYSTEM (CCS83), ZONE VI, NAD 83, OCS (2017.50) EPOCH ADJUSTMENT, AS DETERMINED LOCALLY BY A LINE BETWEEN CONTINUOUS GLOBAL POSITIONING STATIONS CGPS STATIONS (BLSA) AND (LBC1) BEING NORTH 69°14'17\"/>

HORIZONTAL DATUM

COORDINATES SHOWN ARE BASED ON THE CALIFORNIA COORDINATE SYSTEM (CCS83), ZONE VI, NAD 83, OCS (2017.50) EPOCH ADJUSTMENT.
ALL DISTANCES SHOWN ARE GRID, UNLESS OTHERWISE NOTED. TO OBTAIN GROUND DISTANCES MULTIPLY GRID BY A COMBINED FACTOR OF 1.00000857.
COMBINATION FACTOR WAS HELD AT: #2010
N:2238550.26' E:6006626.79' ELEVATION= 19.01'

VERTICAL DATUM

O.C.S. BM. 1A-144-04 ELEV. = 15.370' YEAR LEVELED: 2005
NAVD 1988 (O.C.S. 1995 ADJUSTMENT)
FOUND 3 3/4\"/>

NOTES

THE SURVEY INFORMATION SHOWN HEREON IS TO BE USED FOR TOPOGRAPHIC RELATIONSHIPS ONLY AND IS NOT INTENDED FOR LAND ACQUISITION OR BOUNDARY PURPOSES.
PARCELS SHOWN WITHOUT BEARING AND DISTANCES ARE FOR GRAPHICAL PURPOSES.

SHEET INDEX

SHEET	NO.	DESCRIPTION
SHEET	1	TITLE SHEET
SHEET	2	BOUNDARY
SHEET	3-4	TOPOGRAPHIC MAP
SHEET	5	PROFILE

PURPOSE OF SURVEY

THE PURPOSE OF THE SURVEY IS TO PROVIDE A TOPOGRAPHIC SURVEY ALONG THIS PORTION OF ROAD TO IDENTIFY LOW AND HIGH GRADE POINTS WITHIN ROAD CURB AND GUTTER FLOW LINE.

SENIOR LAND SURVEYOR'S CERTIFICATE:

THIS MAP CORRECTLY REPRESENTS A SURVEY MADE BY ME OR UNDER MY DIRECTION IN CONFORMANCE WITH REQUIREMENTS OF THE PROFESSIONAL LAND SURVEYOR'S ACT; THIS 1 DAY OF JUNE, 2021.

MICHAEL KUBISTY, PLS. SENIOR LAND SURVEYOR



DEPUTY COUNTY SURVEYOR'S STATEMENT:

THIS MAP HAS BEEN EXAMINED IN ACCORDANCE WITH THE PROFESSIONAL LAND SURVEYOR'S ACT; THIS 1 DAY OF JUN, 2021.

WADE WEAVER, PLS. DEPUTY COUNTY SURVEYOR



TOPOGRAPHIC MAPPING PROJECT

			COUNTY OF ORANGE OC PUBLIC WORKS OC SURVEY/FIELD SERVICES/BOUNDARY ANALYSIS & MAPPING			
			DRYSDALE LN. ROAD MAINTENANCE			
			TITLE SHEET			
			PROJECT LIMITS: FROM 11402 TO 11352 DRYSDALE			
			DATE OF SURVEY: 01/20/2021		BY: J. RUSSO & PARTY	
			MAPPING		BY: I. ISLAS	
			OFFICE CHECK		BY: M. KUBISTY, PLS.	
			FIELD CHECK		BY: J. RUSSO & PARTY	
			SCALE: N.T.S.		FILE # 1920PW-OP0023	
			W.O. # ER19202			
			FILE: DRYSDALE_TOPO_2020.DWG			
MARK	DATE	ITEM	SHEET NO.			
			1			
			of			
			5			
		REVISIONS				

ESTABLISHMENT NOTES

- Ⓐ

ESTABLISHED THE CENTERLINE OF BASKERVILLE DR. PER (R1), HOLDING A LINE BETWEEN MONUMENTS 1 AND 2

Ⓑ

ESTABLISHED THE ANGLE POINT IN THE CENTERLINE OF DRYSDALE LN. BY HOLDING RECORD DISTANCES PER (R1), SE'LY FROM MONUMENT 3 AND SW'LY FROM MONUMENT 4. FITS RECORD ANGLE PER (R1) AT MONUMENT 3 FROM LINE ESTABLISHMENT Ⓐ

Ⓒ

ESTABLISHED A PORTION OF THE CENTERLINE OF DRYSDALE LN. BY HOLDING A LINE BETWEEN MONUMENT 3 AND ESTABLISHMENT Ⓑ. PER (R1). FITS SPLIT OF EXISTING CONCRETE CURBS ALONG DRYSDALE LN.

Ⓓ

ESTABLISHED A PORTION OF THE CENTERLINE OF DRYSDALE LN. BY HOLDING A LINE BETWEEN MONUMENT 4 AND ESTABLISHMENT Ⓑ. PER (R1).FITS SPLIT OF EXISTING CONCRETE CURBS ALONG DRYSDALE LN.

Ⓔ

ESTABLISHED THE CENTERLINE OF PEMBERTON RD. BY HOLDING RECORD ANGLE, DISTANCE AND CURVATURE INFORMATION PER (R1) BETWEEN MONUMENTS 5 AND 6

Ⓕ

ESTABLISHED THE CENTERLINE OF DRYSDALE LN. BY HOLDING RECORD ANGLE OF 90°00'00" PER (R1), AT MONUMENT 5 W'LY FROM LINE ESTABLISHMENT Ⓔ

Ⓖ

ESTABLISHED THE CENTERLINE OF DRYSDALE LN. BY HOLDING RECORD RADIUS OF 820.00' PER (R1), AND TANGENT TO LINES 11 AND 12

Ⓗ

ESTABLISHED THE E.C. OF DRYSDALE LN. BY INTERSECTION HOLDING ESTABLISHMENT NOTES Ⓒ AND Ⓔ

Ⓘ

ESTABLISHED THE SE'LY RIGHT OF WAY OF BASKERVILLE DR. BY HOLDING A RECORD DISTANCE OF 30' PER (R1). SE'LY OF AND PARALLEL WITH ESTABLISHMENT Ⓐ

Ⓢ

ESTABLISHED THE NE'LY RIGHT OF WAY OF DRYSDALE LN. BY HOLDING A RECORD DISTANCE OF 30' PER (R1), NE'LY OF AND PARALLEL WITH ESTABLISHMENT Ⓒ

Ⓚ

ESTABLISHED THE SW'LY RIGHT OF WAY OF DRYSDALE LN. BY HOLDING A RECORD DISTANCE OF 30' PER (R1), SW'LY OF AND PARALLEL WITH ESTABLISHMENT Ⓒ

Ⓛ

ESTABLISHED THE S'LY RIGHT OF WAY OF DRYSDALE LN. AND BASKERVILLE DR. BY HOLDING A RECORD RADIUS OF 13' PER (R1), AND TANGENT TO THE LINE ESTABLISHMENTS 1 AND 3

Ⓜ

ESTABLISHED THE SE'LY RIGHT OF WAY OF DRYSDALE LN. AND BASKERVILLE DR. BY HOLDING A RECORD RADIUS OF 13' PER (R1), AND TANGENT TO THE LINE ESTABLISHMENTS 1 AND 3

Ⓝ

ESTABLISHED THE NW'LY RIGHT OF WAY OF DRYSDALE LN. BY HOLDING A RECORD DISTANCE OF 30' PER (R1). NW'LY OF AND PARALLEL WITH ESTABLISHMENT 1

Ⓞ

ESTABLISHED THE SE'LY RIGHT OF WAY OF DRYSDALE LN. BY HOLDING A RECORD DISTANCE OF 30' PER (R1). SE'LY OF AND PARALLEL WITH ESTABLISHMENT 1

Ⓟ

ESTABLISHED THE S'LY RIGHT OF WAY OF DRYSDALE LN. BY HOLDING THE RECORD COURSES AND CURVE DATA BETWEEN ESTABLISHMENTS 1 AND 3 PER (R1).

Ⓠ

ESTABLISHED THE N'LY RIGHT OF WAY OF DRYSDALE LN. BY HOLDING A RECORD RADIUS OF 25' PER (R1), AND TANGENT TO LINE ESTABLISHMENTS 1 AND 11

Ⓡ

ESTABLISHED THE NW'LY RIGHT OF WAY OF DRYSDALE LN. BY HOLDING A RECORD DISTANCE OF 30' PER (R1). NW'LY OF AND PARALLEL WITH ESTABLISHMENT 1

Ⓢ

ESTABLISHED THE SE'LY RIGHT OF WAY OF DRYSDALE LN. BY HOLDING A RECORD DISTANCE OF 30' PER (R1), SE'LY OF AND PARALLEL WITH ESTABLISHMENT 1

Ⓣ

ESTABLISHED THE S'LY RIGHT OF WAY OF DRYSDALE LN. BY HOLDING A RECORD DISTANCE OF 30' PER (R1), SE'LY OF AND PARALLEL WITH ESTABLISHMENT 1

Ⓤ

ESTABLISHED THE W'LY RIGHT OF WAY OF PEMBERTON RD. BY HOLDING A RECORD DISTANCE OF 30' PER (R1), W'LY OF AND PARALLEL WITH ESTABLISHMENT 1

Ⓥ

ESTABLISHED THE S'LY RIGHT OF WAY OF DRYSDALE LN. AND PEMBERTON RD. BY HOLDING A RECORD RADIUS OF 13' PER (R1), AND TANGENT TO LINE ESTABLISHMENTS 1 AND 11

MONUMENT NOTES

(MONUMENTS ARE HYPERLINKED IN DRAWING)

- 1

FOUND SPIKE AND 1 1/2" WASHER STAMPED, "O.C.S." PER (R2), FLUSH IN AC. ACCEPTED AS A CENTERLINE E.C. OF BASKERVILLE RD.
- 2

FOUND SPIKE AND WASHER STAMPED, "O.C.S." PER (R2), FLUSH IN AC. ACCEPTED AS A CENTERLINE B.C. OF BASKERVILLE RD.
- 3

FOUND MAG NAIL (NO TAG & NO REF.), FLUSH IN AC. ACCEPTED AS CENTERLINE INTERSECTION OF BASKERVILLE RD. AND DRYSDALE LN. FITS RECORD DISTANCE PER (R1) NE'LY FROM MONUMENT
- 4

FOUND SPIKE AND WASHER STAMPED, "O.C.S." PER (R2), FLUSH IN AC. ACCEPTED AS A CENTERLINE B.C. OF DRYSDALE LN.
- 5

FOUND SPIKE AND WASHER STAMPED "O.C.S." PER (R2), FLUSH IN AC. ACCEPTED AS CENTERLINE INTERSECTION OF DRYSDALE LN. AND PEMBERTON RD.
- 6

FOUND SPIKE AND WASHER STAMPED "O.C.S." PER (R2), FLUSH IN AC. ACCEPTED AS CENTERLINE INTERSECTION OF PEMBERTON RD. AND HARRISBURG RD.
- 7

FOUND LEAD, TACK AND TAG STAMPED "LS 2383" PER (R1), FLUSH IN T.C. S35°54'19"E 0.09' FROM 11.75' OFFSET TO THE N'LY RIGHT OF WAY OF DRYSDALE LN. PER (R1).
- 8

FOUND NAIL IN LIEU OF LEAD, TACK AND TAG STAMPED "LS 2383" PER (R1), FLUSH IN T.C. S35°54'14"E 0.09' FROM 11.75' OFFSET TO THE N'LY RIGHT OF WAY OF DRYSDALE LN. PER (R1).
- 9

FOUND NAIL IN LIEU OF LEAD TACK AND TAG STAMPED "LS 2383" PER (R1), FLUSH IN T.C. N46°09'32"W 0.14' FROM 11.75' OFFSET TO THE S'LY RIGHT OF WAY OF DRYSDALE LN. PER (R1).
- 10

FOUND CHISELED "+" IN LIEU OF LEAD, TACK AND TAG STAMPED "LS 2383" PER (R1), FLUSH IN T.C. N36°34'03"W 0.04' FROM 11.75' OFFSET TO THE N'LY RIGHT OF WAY OF DRYSDALE LN. PER (R1).
- 11

FOUND CHISELED "+" (NO REF.) IN T.C. ACCEPTED AS NW'LY TANGENT OVER TIE TO THE CENTERLINE POINT OF CURVATURE OF DRYSDALE LN.
- 12

FOUND CHISELED "+" (NO REF.) IN T.C. ACCEPTED AS SE'LY TANGENT OVER TIE TO THE CENTERLINE POINT OF CURVATURE OF DRYSDALE LN.
- 13

FOUND LEAD, TACK AND TAG STAMPED "LS 2383" PER (R1), FLUSH IN T.C. N31°56'30"W 0.06' FROM 11.75' OFFSET TO THE N'LY RIGHT OF WAY OF DRYSDALE LN. PER (R1).
- 14

FOUND NAIL IN LIEU OF LEAD, TACK AND TAG STAMPED "LS 2383" PER (R1), FLUSH IN T.C. N31°48'52"W 0.11' FROM 11.75' OFFSET TO THE S'LY RIGHT OF WAY OF DRYSDALE LN. PER (R1).
- 15

FOUND NAIL IN LIEU OF LEAD, TACK AND TAG STAMPED "LS 2383" PER (R1), FLUSH IN T.C. N26°52'45"W 0.06' FROM 11.75' OFFSET TO THE N'LY RIGHT OF WAY OF DRYSDALE LN. PER (R1).
- 16

FOUND LEAD TACK AND TAG STAMPED "LS 2383" PER (R1), FLUSH IN T.C. N26°07'21"W 0.09' FROM 11.75' OFFSET TO THE S'LY RIGHT OF WAY OF DRYSDALE LN. PER (R1).
- 17

FOUND NAIL IN LIEU OF LEAD, TACK AND TAG STAMPED "LS 2383" PER (R1), FLUSH IN T.C. N20°26'00"W 0.23' FROM 11.75' OFFSET TO THE S'LY RIGHT OF WAY OF DRYSDALE LN. PER (R1).
- 18

FOUND NAIL IN LIEU OF LEAD, TACK AND TAG STAMPED "LS 2383" PER (R1), FLUSH IN T.C. N09°03'25"W 0.34' FROM 11.75' OFFSET TO THE S'LY RIGHT OF WAY OF DRYSDALE LN. PER (R1).

CURVE TABLE						
CURVE #	DELTA	RADIUS	LENGTH	RECORD DELTA	RECORD RADIUS	RECORD LENGTH
C1	37°08'00"	819.99'	531.43'	37°10'00" (R1)	820.00' (R1)	(531.92' R1)
C2	8°10'00"	699.99'	99.77'	8°10'00" (R1)	700.00' (R1)	(99.77' R1)
C3	37°08'00"	849.99'	550.88'	37°10'00" (R1)	850.00' (R1)	(551.38' R1)
C4	37°08'00"	789.99'	511.99'	37°10'00" (R1)	790.00' (R1)	(512.46' R1)
C5	8°10'00"	729.99'	104.05'	22°10'53" (R1)	730.00' (R1)	(104.05' R1)
C6	90°00'00"	13.00'	20.42'	90°00'00" (R1)	13.00' (R1)	(20.42' R1)
C7	81°37'46"	25.00'	35.62'	81°39'07" (R1)	25.00' (R1)	(35.63' R1)
C8	90°00'00"	13.00'	20.42'	90°00'00" (R1)	13.00' (R1)	(20.42' R1)
C9	90°01'06"	13.00'	20.42'	37°10'00" (R1)	13.00' (R1)	(20.42' R1)
C10	102°07'33"	70.00'	124.77'	102°07'29" (R1)	70.00' (R1)	(124.77' R1)
C11	90°01'07"	13.00'	20.42'	90°00'00" (R1)	13.00' (R1)	(20.42' R1)

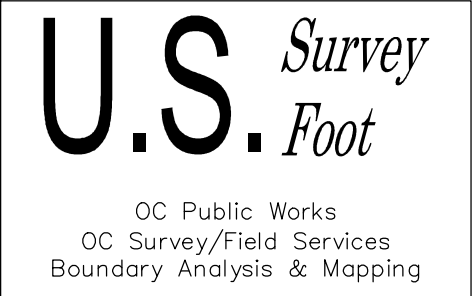
LINE TABLE			
LINE #	BEARING	MEASURED DISTANCE	RECORD DISTANCE
L1	N88°46'11"W	48.45'	(47.98' R1)
L2	N01°13'49"E	127.38'	(127.38' R1)
L3	N06°56'11"W	47.89'	(47.89' R1)
L4	N88°46'11"W	5.45'	(4.98' R1)
L5	N01°13'49"E	84.38'	(84.38' R1)
L6	N44°16'25"W	125.23'	(125.23' R1)
L7	N44°16'25"W	165.29'	(165.28' R1)
L8	N34°00'49"W	50.00'	(50.00' R1)
L9	N43°51'38"E	50.00'	(50.00' R1)
L10	N35°50'31"W	18.25'	(NO REF.)
L11	N35°50'31"W	18.25'	(NO REF.)
L12	N44°16'25"W	30.00'	(30.00' R1)
L13	N45°43'35"E	43.00'	(43.00' R1)
L14	N45°43'11"E	43.00'	(43.00' R1)
L15	N44°16'25"W	30.00'	(30.00' R1)
L16	N88°46'11"W	30.00'	(30.00' R1)
L17	N01°13'49"E	43.00'	(43.00' R1)
L18	N88°46'11"W	30.00'	(30.00' R1)
L19	N01°14'11"E	43.01'	(43.00' R1)
L20	N88°53'08"W	5.44'	(4.98' R1)

- REFERENCES
- (REFERENCED DOCUMENTS ARE HYPERLINKED)
- (R1) = TRACT NO. 1680, MM 110/37-48
- (R2) = O.C.S. ALIGNMENT NOTES 4/11-12, PGS. 989-1013

- LEGEND
- FOUND MONUMENT AS NOTED
- ⊗

SEARCHED NOT FOUND
- Ⓐ

CALCULATED 11.75' OFFSET LINE FROM RIGHT OF WAY PER (R1)



			COUNTY OF ORANGE OC PUBLIC WORKS OC SURVEY/FIELD SERVICES/BOUNDARY ANALYSIS & MAPPING				
			11362 DRYSDALE LANE ROAD MAINTENANCE				
			BOUNDARY MAP				
			PROJECT LIMITS: FROM 11402 TO 11352 DRYSDALE				
			DATE OF SURVEY:01/20/2021		BY: J. RUSSO & PARTY		SHEET NO. 2 of 5
			MAPPING		BY: S. STROM		
			OFFICE CHECK		BY: M. KUBISTY, PLS		
			FIELD CHECK		BY: J. RUSSO & PARTY		
			MARK	DATE	ITEM	SCALE: 1" = 50' W.O. #E19202 FILE #1920PW-OP0023	
REVISIONS			FILE: 11362 DRYSDALE_BOUNDARY MAP_2021.DWG				

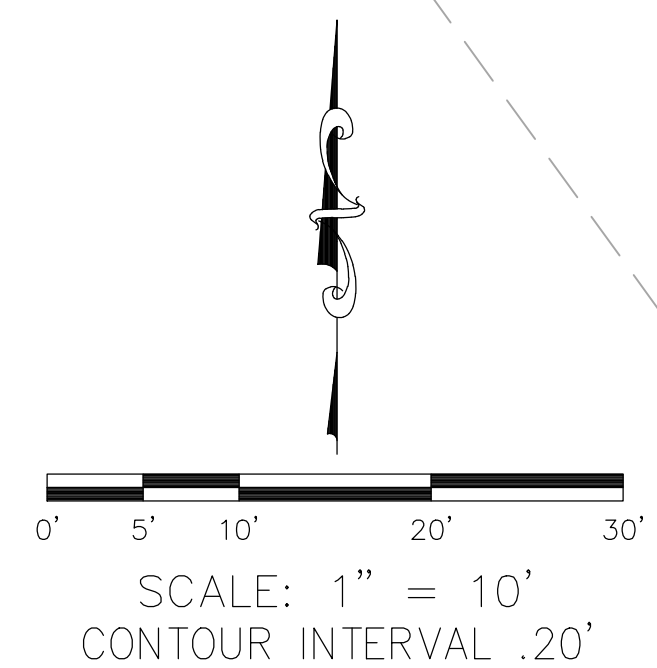
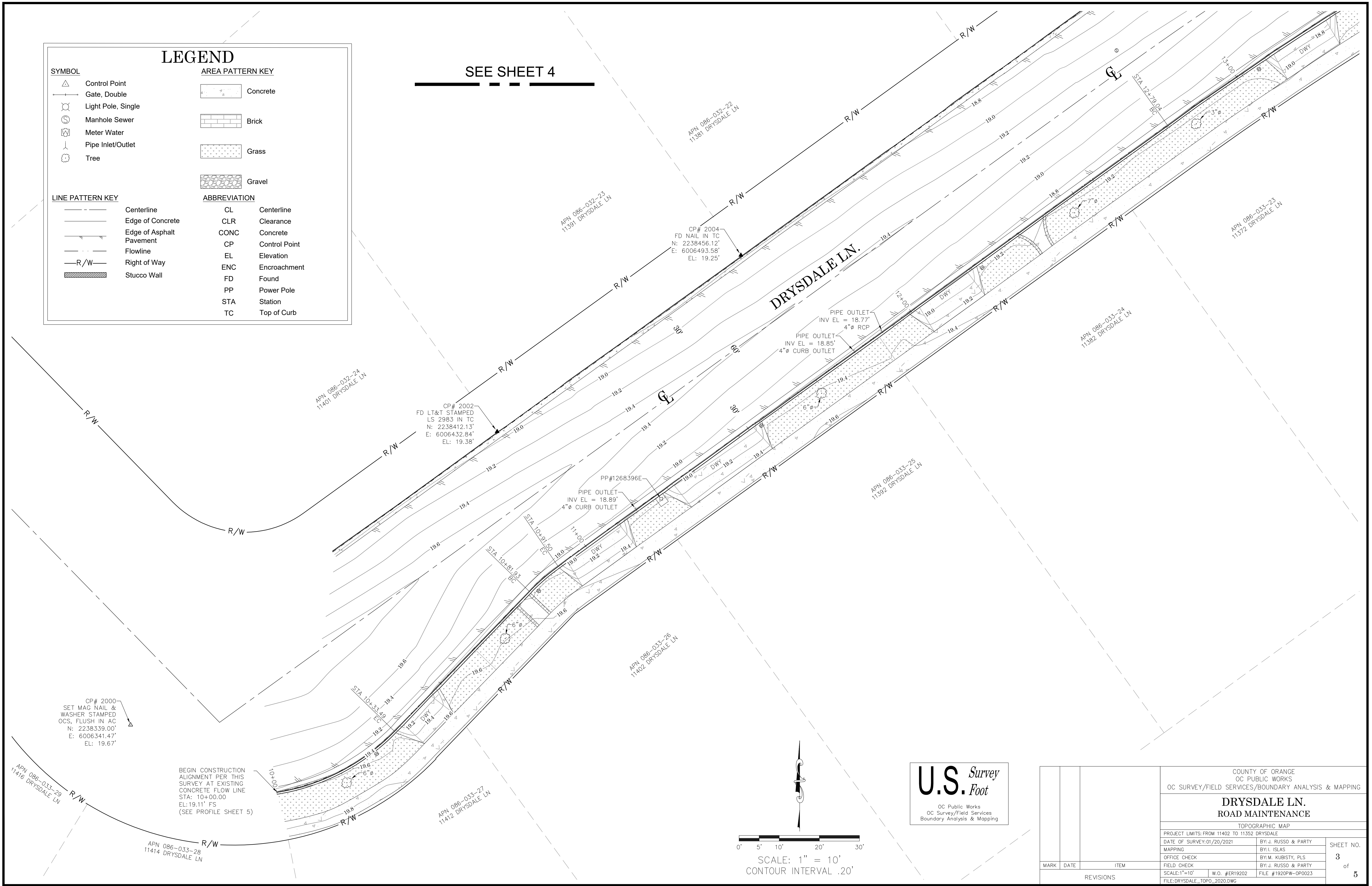
SHEET NO.
2
of
5

LEGEND

- SYMBOL**
- Control Point
 - Gate, Double
 - Light Pole, Single
 - Manhole Sewer
 - Meter Water
 - Pipe Inlet/Outlet
 - Tree
- AREA PATTERN KEY**
- Concrete
 - Brick
 - Grass
 - Gravel

- LINE PATTERN KEY**
- Centerline
 - Edge of Concrete
 - Edge of Asphalt Pavement
 - Flowline
 - Right of Way
 - Stucco Wall
- ABBREVIATION**
- CL Centerline
 - CLR Clearance
 - CONC Concrete
 - CP Control Point
 - EL Elevation
 - ENC Encroachment
 - FD Found
 - PP Power Pole
 - STA Station
 - TC Top of Curb

SEE SHEET 4



U.S. Survey
OC Public Works
OC Survey/Field Services
Boundary Analysis & Mapping

		COUNTY OF ORANGE OC PUBLIC WORKS OC SURVEY/FIELD SERVICES/BOUNDARY ANALYSIS & MAPPING				
		DRYSDALE LN. ROAD MAINTENANCE				
		TOPOGRAPHIC MAP				
		PROJECT LIMITS: FROM 11402 TO 11352 DRYSDALE				
		DATE OF SURVEY: 01/20/2021		BY: J. RUSSO & PARTY		SHEET NO. 3 of 5
		MAPPING		BY: I. ISLAS		
		OFFICE CHECK		BY: M. KUBISTY, PLS		
		FIELD CHECK		BY: J. RUSSO & PARTY		
		SCALE: 1"=10'		W.O. #ER19202		FILE # 1920PW-OP0023
		FILE: DRYSDALE_TOPO_2020.DWG				
MARK	DATE	ITEM	REVISIONS			

LEGEND

SYMBOL

△ Control Point

→ Gate, Double

⊗ Light Pole, Single

⊙ Manhole Sewer

⊞ Meter Water

⊥ Pipe Inlet/Outlet

⊕ Tree

AREA PATTERN KEY

Concrete

Brick

Grass

Gravel

LINE PATTERN KEY

Centerline

Edge of Concrete

Edge of Asphalt Pavement

Flowline

R/W Right of Way

Stucco Wall

ABBREVIATION

CL Centerline

CLR Clearance

CONC Concrete

CP Control Point

EL Elevation

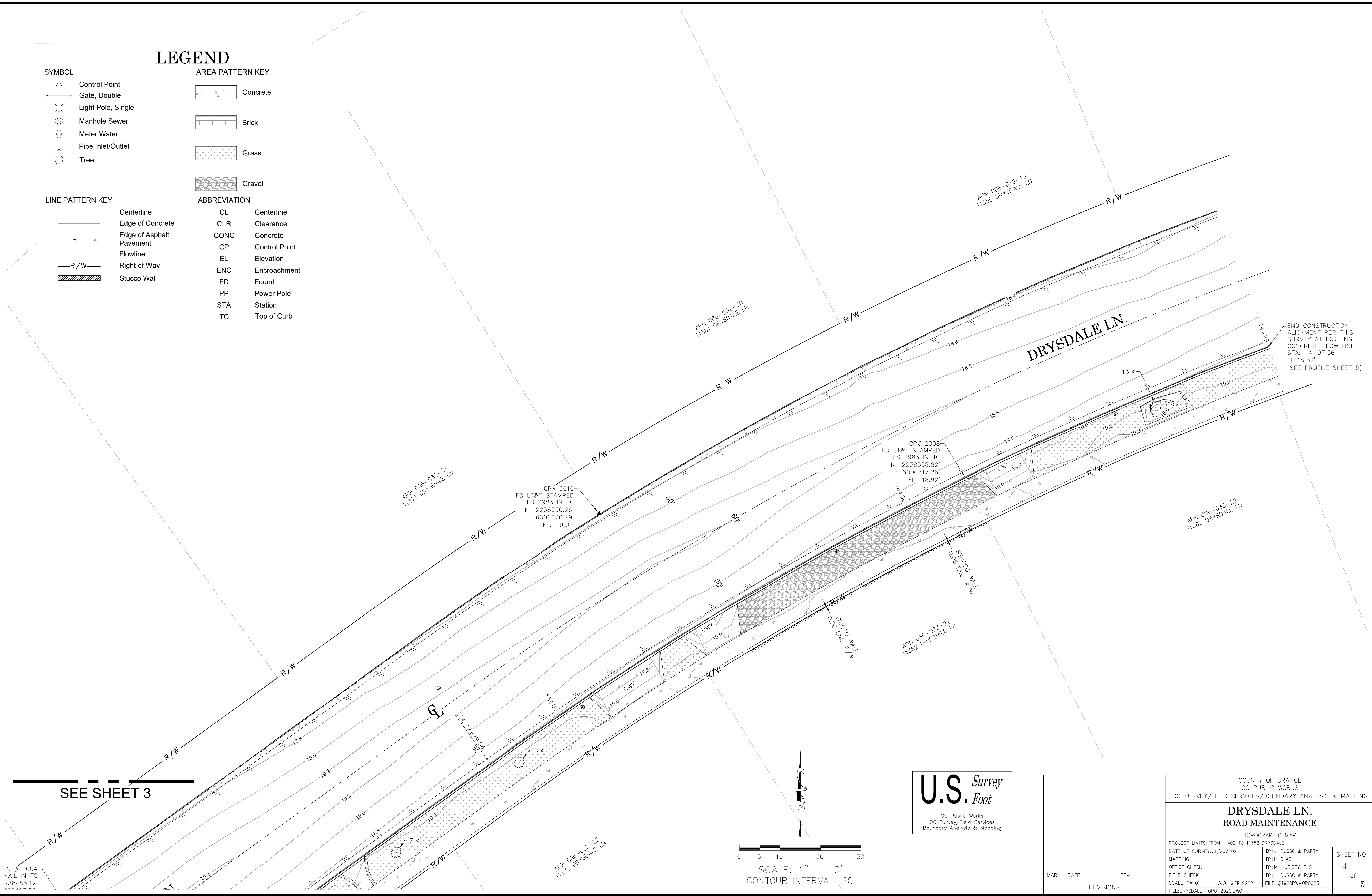
ENC Encroachment

FD Found

PP Power Pole

STA Station

TC Top of Curb

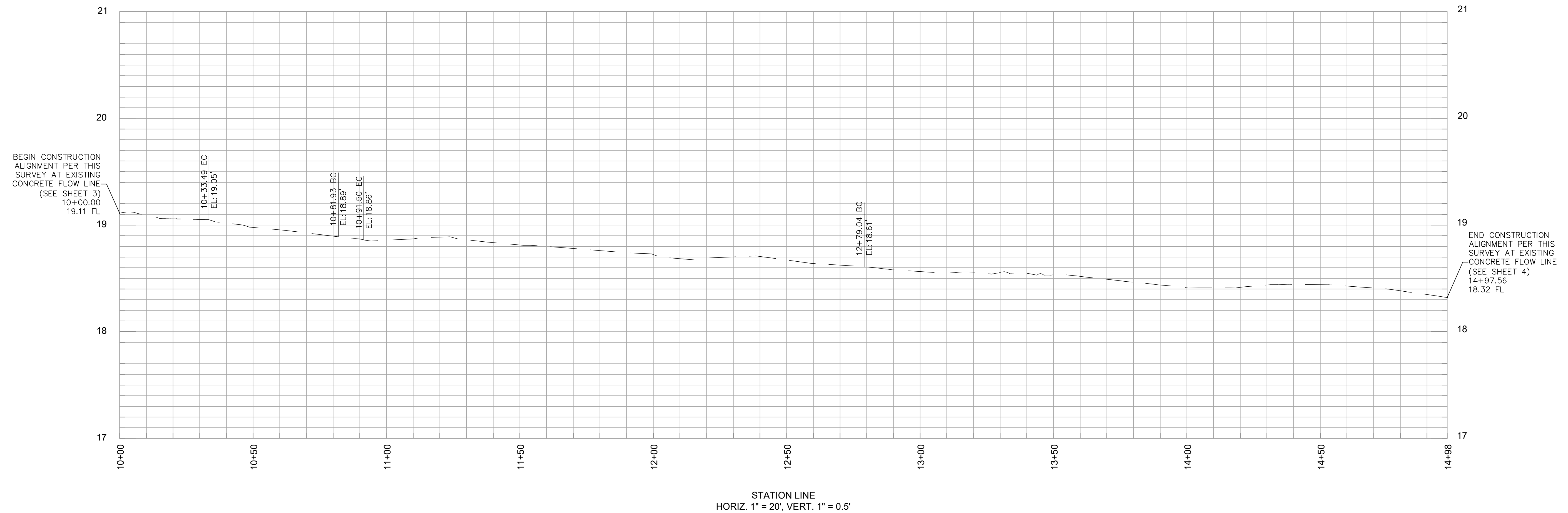


U.S. Survey
Foot

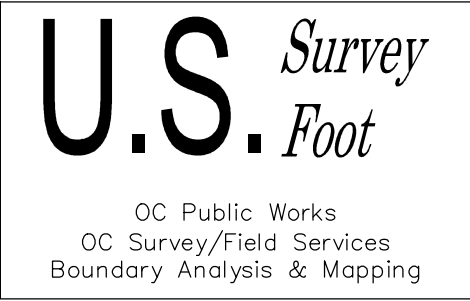
OC Public Works
OC Survey/Field Services
Boundary Analysis & Mapping

			COUNTY OF ORANGE OC PUBLIC WORKS OC SURVEY/FIELD SERVICES/BOUNDARY ANALYSIS & MAPPING			
			DRYSDALE LN. ROAD MAINTENANCE			
			TOPOGRAPHIC MAP			
			PROJECT LIMITS: FROM 11402 TO 11352 DRYSDALE			
			DATE OF SURVEY: 01/20/2021		BY: J. RUSSO & PARTY	SHEET NO. 4 of 5
			MAPPING		BY: I. ISLAS	
			OFFICE CHECK		BY: M. KUBISTY, PLS	
			FIELD CHECK		BY: J. RUSSO & PARTY	
MARK	DATE	ITEM	SCALE: 1"=10'		W.O. #ER19202	FILE #1920PW-OP0023
		REVISIONS	FILE: DRYSDALE_TOPO_2020.DWG			

PROFILE OF THE EXISTING SE'LY CONCRETE FLOWLINE OF DRYSDALE LANE



NOTE: THE ALIGNMENT FOR THIS PROFILE WAS DEVELOPED HOLDING A STATION OF 10+00 AT THE SW'LY END OF THE EXISTING CONCRETE FLOWLINE OF THE SE'LY SIDE OF DRYSDALE LN AND INCREASING NE'LY AS SHOWN ON SHEET 3-4



		COUNTY OF ORANGE OC PUBLIC WORKS OC SURVEY/FIELD SERVICES/BOUNDARY ANALYSIS & MAPPING				
		DRYSDALE LN. ROAD MAINTENANCE				
		TOPOGRAPHIC MAP				
		PROJECT LIMITS: FROM 11402 TO 11352 DRYSDALE				
		DATE OF SURVEY: 01/20/2021		BY: J. RUSSO & PARTY		SHEET NO. 5 of 5
		MAPPING		BY: L. ISLAS		
OFFICE CHECK		BY: M. KUBISTY, PLS				
FIELD CHECK		BY: J. RUSSO & PARTY				
SCALE: 1"=20'		W.O. #ER19202				
MARK	DATE	ITEM	REVISIONS			
			FILE: DRYSDALE_TOPO_2020.DWG			