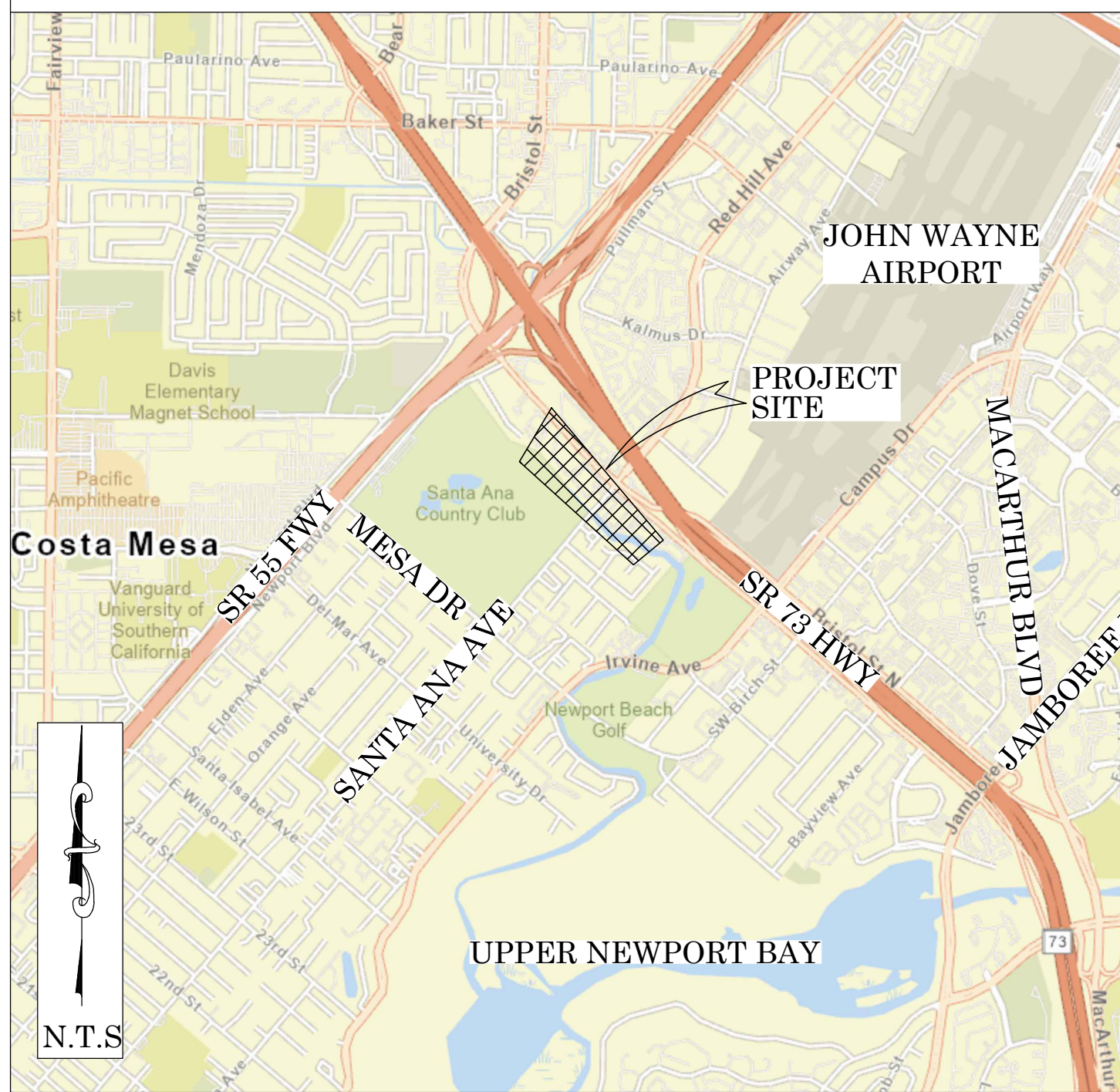




OC PUBLIC WORKS DEPARTMENT
KEVIN ONUMA, DIRECTOR OF PUBLIC WORKS
SANTA ANA-DELHI CHANNEL (F01)
DEBRIS BOOM PROJECT 2025



LOCATION MAP



SENIOR LAND SURVEYOR'S CERTIFICATE:

THIS MAP CORRECTLY REPRESENTS A SURVEY MADE BY ME OR UNDER MY DIRECTION IN CONFORMANCE WITH REQUIREMENTS OF THE PROFESSIONAL LAND SURVEYORS' ACT; THIS 12 DAY OF JUNE, 2025.

Elliott Medina

ELLIOTT MEDINA, PLS. SENIOR LAND SURVEYOR



SENIOR LAND SURVEYOR'S CERTIFICATE:

THIS MAP HAS BEEN EXAMINED IN ACCORDANCE WITH THE PROFESSIONAL LAND SURVEYORS' ACT; THIS 12 DAY OF JUNE, 2025.

Michael Kubisty

MICHAEL KUBISTY, PLS. SENIOR LAND SURVEYOR



NOTES

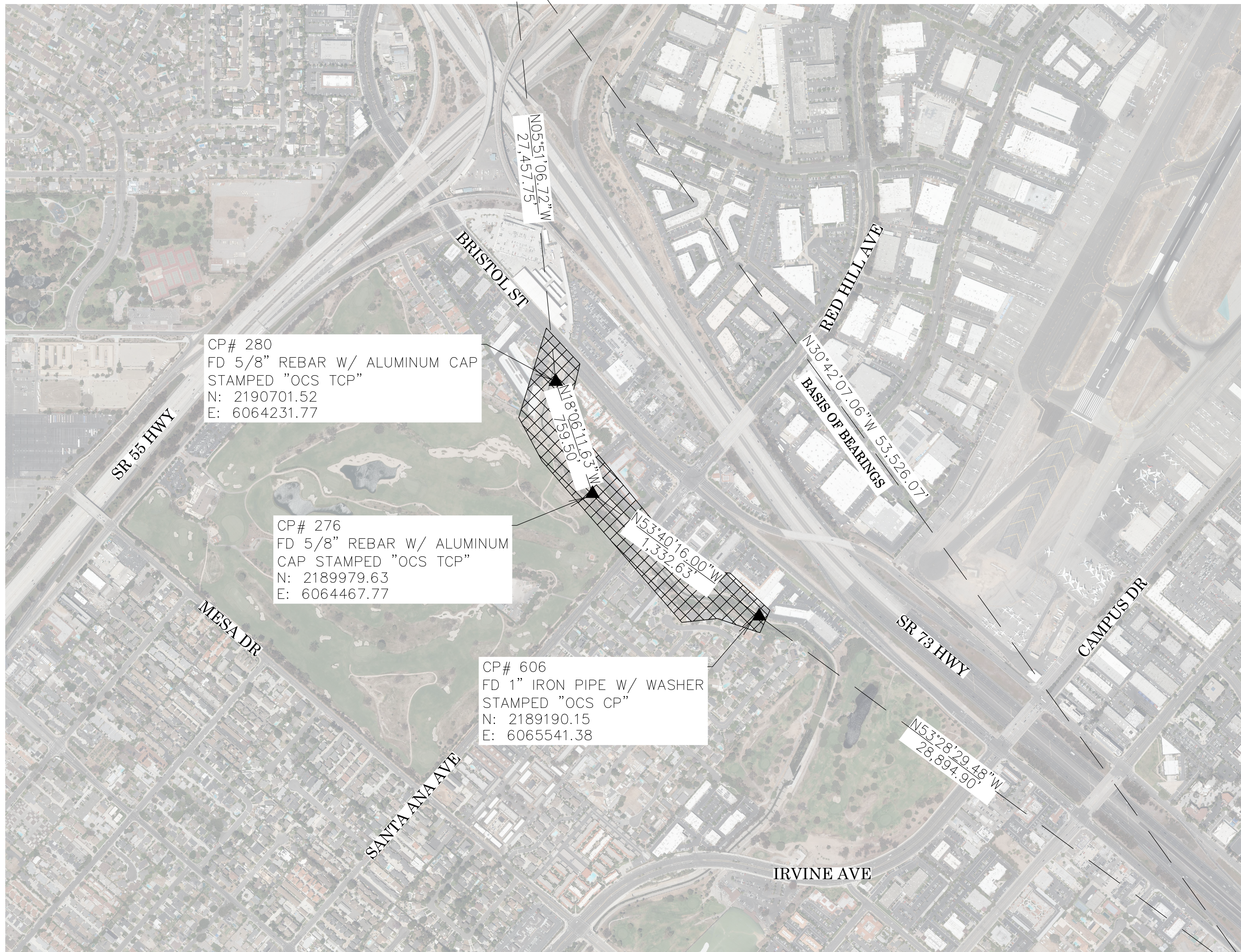
ALL RIGHT OF WAY LINES SHOWN HEREON ARE BASED ON THE OC LANDBASE. THEY ARE PLACED HEREON FOR REFERENCE PURPOSES ONLY AND ARE APPROXIMATE IN LOCATION. A BOUNDARY SURVEY WAS NOT PERFORMED.

* THE DASHED CONTOUR LINETYPE AND ALL CONTOUR LABELS WITH AN ASTERISK ARE FOR THE ROAD SURFACE, AND ALL LABELS WITH NO ASTERISK ARE FOR THE BOTTOM OF THE CHANNEL SURFACE.

U.S. Survey
Foot

OC Public Works
OC Survey/Field Services
Boundary Analysis & Mapping

FOUND CGPS "SACY"
N: 2218016.19
E: 6061432.27
THIS IS A CONTINUOUS OPERATING
GLOBAL POSITIONING STATION (CGPS)
AND IS PART OF THE CALIFORNIA
SPATIAL REFERENCE SYSTEM (CSRS).



BASIS OF BEARINGS

THE BASIS OF BEARINGS FOR THIS SURVEY IS BASED ON THE CALIFORNIA COORDINATE SYSTEM (CCS83), ZONE VI, NAD 83, OCS (2017.50) EPOCH ADJUSTMENT, AS DETERMINED LOCALLY BY A LINE BETWEEN CONTINUOUS GLOBAL POSITIONING STATIONS CGPS "TRAK" AND "SACY" BEING NORTH 30°42'07.06" EAST AS DERIVED FROM THE COORDINATES PUBLISHED BY THE CALIFORNIA SPATIAL REFERENCE CENTER (CSRC) ALONG WITH DATA SHEETS ON FILE IN THE OFFICE OF THE ORANGE COUNTY SURVEYOR.

HORIZONTAL DATUM

COORDINATES SHOWN ARE BASED ON THE CALIFORNIA COORDINATE SYSTEM (CCS83), ZONE VI, NAD 83, OCS (2017.50) EPOCH ADJUSTMENT.

ALL DISTANCES SHOWN ARE GRID, UNLESS OTHERWISE NOTED. TO OBTAIN GROUND DISTANCES MULTIPLY GRID BY A COMBINED FACTOR OF 1.00002523.

THIS COMBINATION FACTOR WAS HELD AT: CP# 276
N: 2189979.63 E: 6064467.77 EL: 34.65'

ALL DISTANCES ARE BASED ON THE U.S. SURVEY FOOT.

VERTICAL DATUM

NAVD 1988

BENCHMARK:
CALIFORNIA SPATIAL REFERENCE SYSTEM (CSRS)
CONTINUOUSLY OPERATING GLOBAL POSITION STATION "TRAK"

ELEVATION (ORTHOMETRIC HEIGHT) 495.18 FEET 150.93 METERS, GEOID 12B PER DATA SHEET ON FILE WITH THE CALIFORNIA SPATIAL REFERENCE CENTER (CSRC)

NOTES

THE SURVEY INFORMATION SHOWN HEREON IS TO BE USED FOR TOPOGRAPHIC RELATIONSHIPS ONLY AND IS NOT INTENDED FOR LAND ACQUISITION OR BOUNDARY PURPOSES.

ALL RIGHT OF WAY LINES SHOWN HEREON ARE BASED ON THE OC LANDBASE. THEY ARE PLACED HEREON FOR REFERENCE PURPOSES ONLY AND ARE APPROXIMATE IN LOCATION. A BOUNDARY SURVEY WAS NOT PERFORMED.

SHEET INDEX

SHEET	NO.	DESCRIPTION
1	1	TITLE SHEET
2-6	2-6	TOPOGRAPHIC MAP

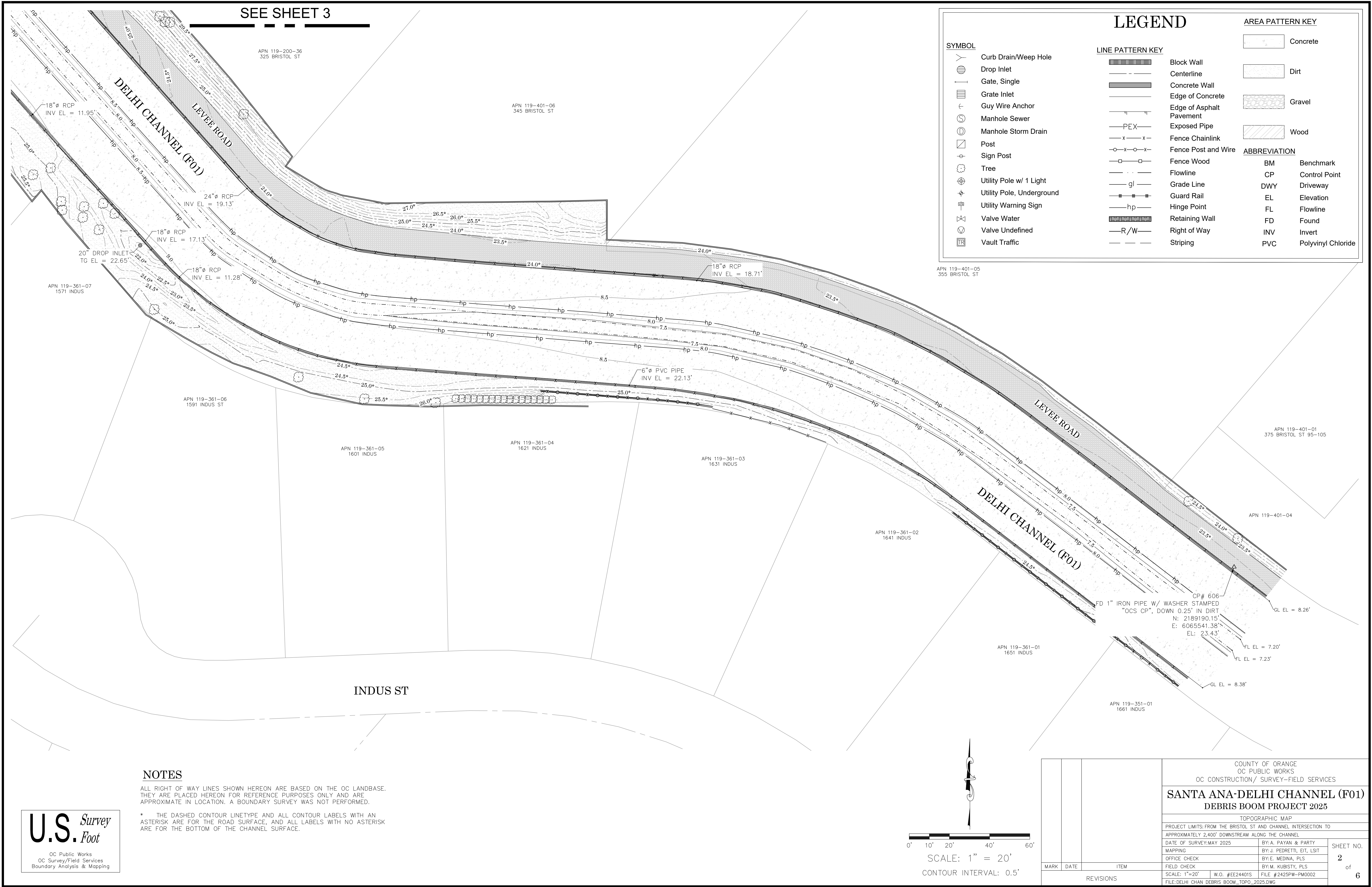
PURPOSE OF SURVEY

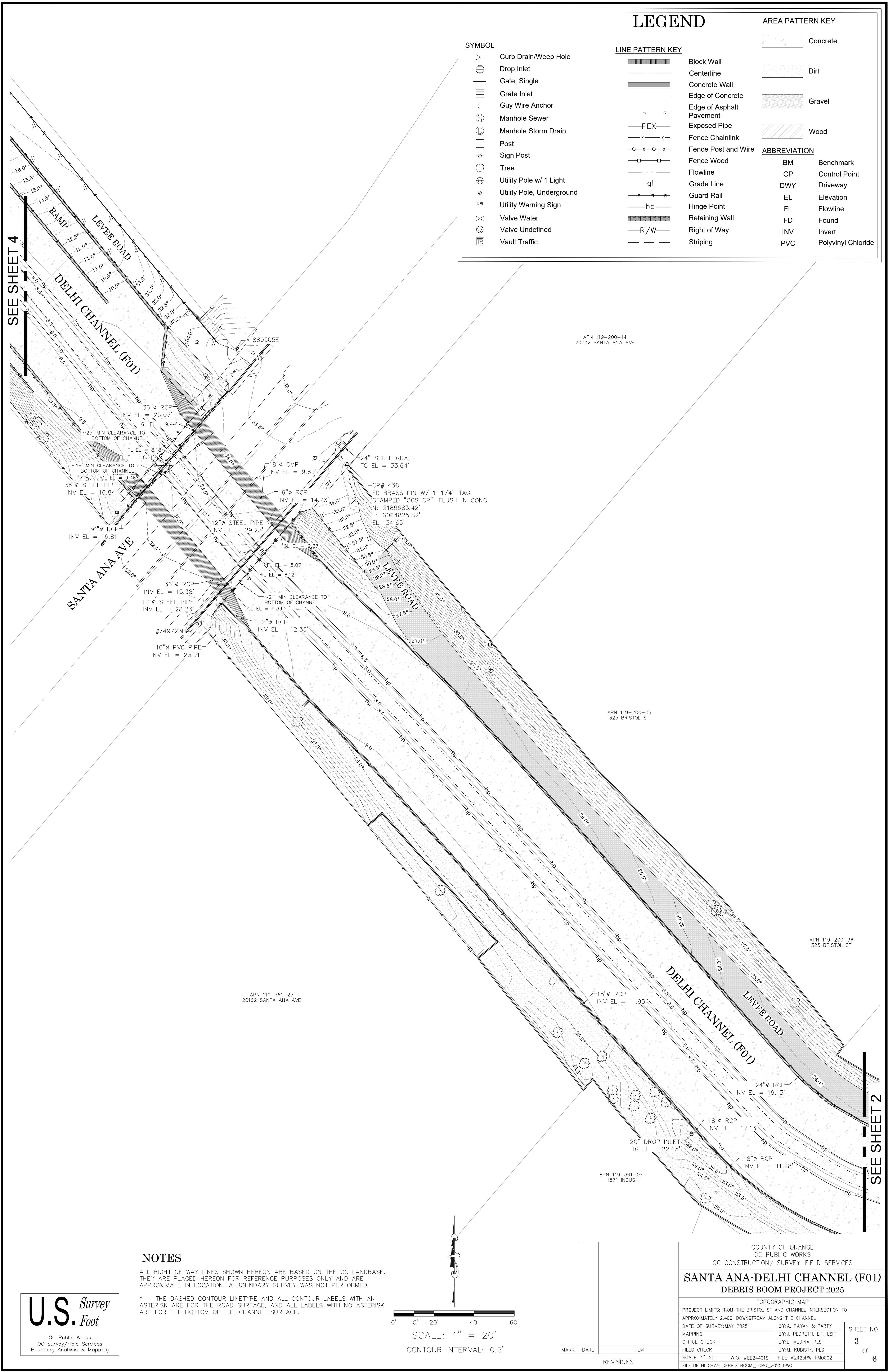
THE PURPOSE OF THE SURVEY IS TO PROVIDE A TOPOGRAPHIC MAP FOR THIS PORTION OF THE SANTA ANA-DELHI CHANNEL.

FOUND CGPS "TRAK"
N: 2171992.61
E: 6088761.20
THIS IS A CONTINUOUS OPERATING
GLOBAL POSITIONING STATION (CGPS)
AND IS PART OF THE CALIFORNIA
SPATIAL REFERENCE SYSTEM (CSRS).

TOPOGRAPHIC MAPPING PROJECT

			COUNTY OF ORANGE OC PUBLIC WORKS OC CONSTRUCTION/ SURVEY-FIELD SERVICES			
			SANTA ANA-DELHI CHANNEL (F01) DEBRIS BOOM PROJECT 2025			
			TITLE SHEET			
			PROJECT LIMITS: FROM THE BRISTOL ST AND CHANNEL INTERSECTION TO APPROXIMATELY 2,400' DOWNSTREAM ALONG THE CHANNEL			
			DATE OF SURVEY:MAY 2025		BY: A. PAYAN & PARTY	SHEET NO. 1 of 6
			MAPPING		BY: J. PEDRETTI, EIT, LST	
			OFFICE CHECK		BY: E. MEDINA, PLS	
			FIELD CHECK		BY: M. KUBISTY, PLS	
MARK	DATE	ITEM	SCALE: N.T.S.		W.O. #EE24401S	FILE #2425PW-PM0002
REVISIONS			FILE: DELHI_CHAN_DEBRIS_BOOM_TOPO_2025.DWG			





SEE SHEET 5

LEGEND

SYMBOL

- Curb Drain/Weep Hole
- Drop Inlet
- Gate, Single
- Grate Inlet
- Guy Wire Anchor
- Manhole Sewer
- Manhole Storm Drain
- Post
- Sign Post
- Tree
- Utility Pole w/ 1 Light
- Utility Pole, Underground
- Utility Warning Sign
- Valve Water
- Valve Undefined
- Vault Traffic

LINE PATTERN KEY

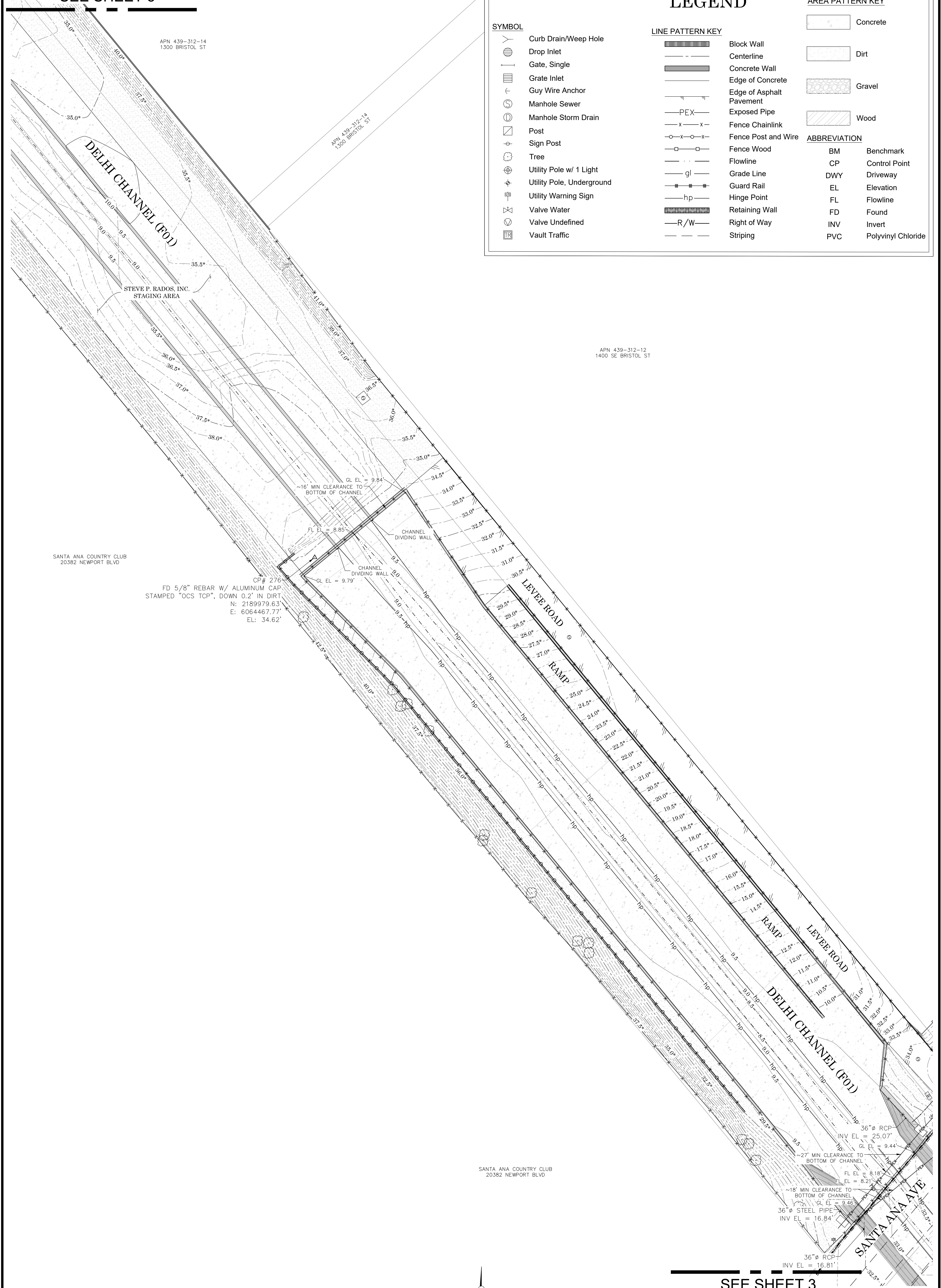
- Block Wall
- Centerline
- Concrete Wall
- Edge of Concrete
- Edge of Asphalt Pavement
- Exposed Pipe
- Fence Chainlink
- Fence Post and Wire
- Fence Wood
- Flowline
- Grade Line
- Guard Rail
- Hinge Point
- Retaining Wall
- Right of Way
- Striping

AREA PATTERN KEY

- Concrete
- Dirt
- Gravel
- Wood

ABBREVIATION

- BM Benchmark
- CP Control Point
- DWY Driveway
- EL Elevation
- FL Flowline
- FD Found
- INV Invert
- PVC Polyvinyl Chloride

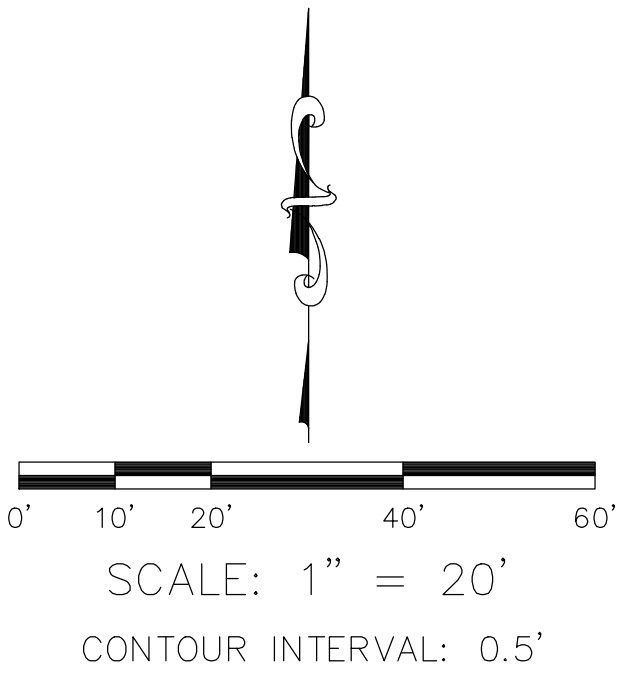


NOTES

ALL RIGHT OF WAY LINES SHOWN HEREON ARE BASED ON THE OC LANDBASE. THEY ARE PLACED HEREON FOR REFERENCE PURPOSES ONLY AND ARE APPROXIMATE IN LOCATION. A BOUNDARY SURVEY WAS NOT PERFORMED.

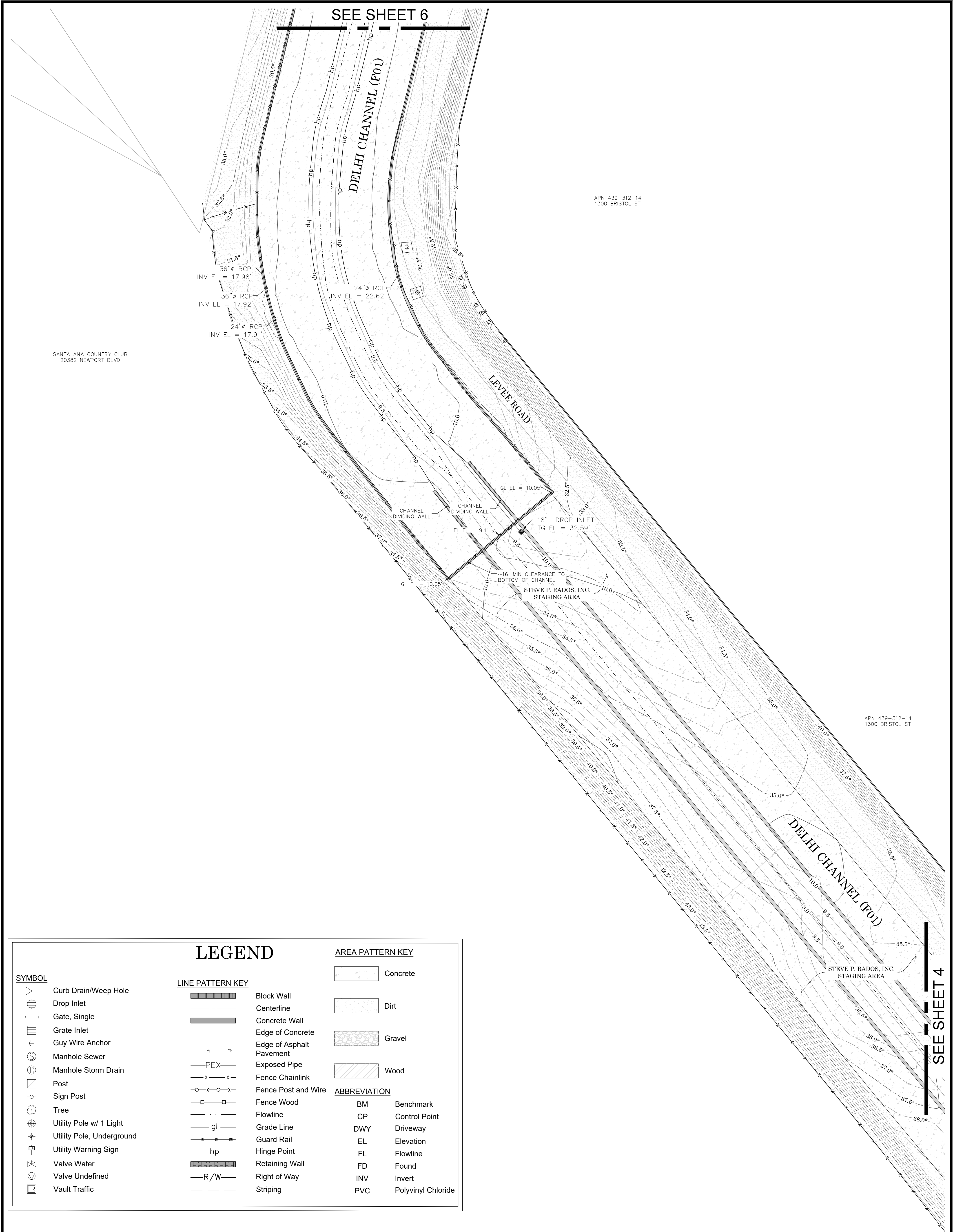
* THE DASHED CONTOUR LINETYPE AND ALL CONTOUR LABELS WITH AN ASTERISK ARE FOR THE ROAD SURFACE, AND ALL LABELS WITH NO ASTERISK ARE FOR THE BOTTOM OF THE CHANNEL SURFACE.

U.S. Survey
Foot
OC Public Works
OC Survey/Field Services
Boundary Analysis & Mapping



SEE SHEET 3

		COUNTY OF ORANGE OC PUBLIC WORKS OC CONSTRUCTION/ SURVEY-FIELD SERVICES			
		SANTA ANA-DELHI CHANNEL (F01) DEBRIS BOOM PROJECT 2025			
		TOPOGRAPHIC MAP			
		PROJECT LIMITS: FROM THE BRISTOL ST AND CHANNEL INTERSECTION TO APPROXIMATELY 2,400' DOWNSTREAM ALONG THE CHANNEL			
		DATE OF SURVEY: MAY 2025			
MARK	DATE	ITEM	MAPPING	BY: A. PAYAN & PARTY	SHEET NO. 4 of 6
			OFFICE CHECK	BY: J. PEDRETTI, EIT, LSIT	
			FIELD CHECK	BY: E. MEDINA, PLS	
			SCALE: 1"=20'	W.O. #EE24401S	
			FILE: DELHI_CHAN_DEBRIS_BOOM_TOPO_2025.DWG		
REVISIONS		FILE #2425PW-FM0002			



SYMBOL

- Curb Drain/Weep Hole
- Drop Inlet
- Gate, Single
- Grate Inlet
- Guy Wire Anchor
- Manhole Sewer
- Manhole Storm Drain
- Post
- Sign Post
- Tree
- Utility Pole w/ 1 Light
- Utility Pole, Underground
- Utility Warning Sign
- Valve Water
- Valve Undefined
- Vault Traffic

LINE PATTERN KEY

- Block Wall
- Centerline
- Concrete Wall
- Edge of Concrete
- Edge of Asphalt Pavement
- Exposed Pipe
- Fence Chainlink
- Fence Post and Wire
- Fence Wood
- Flowline
- Grade Line
- Guard Rail
- Hinge Point
- Retaining Wall
- Right of Way
- Striping

AREA PATTERN KEY

- Concrete
- Dirt
- Gravel
- Wood

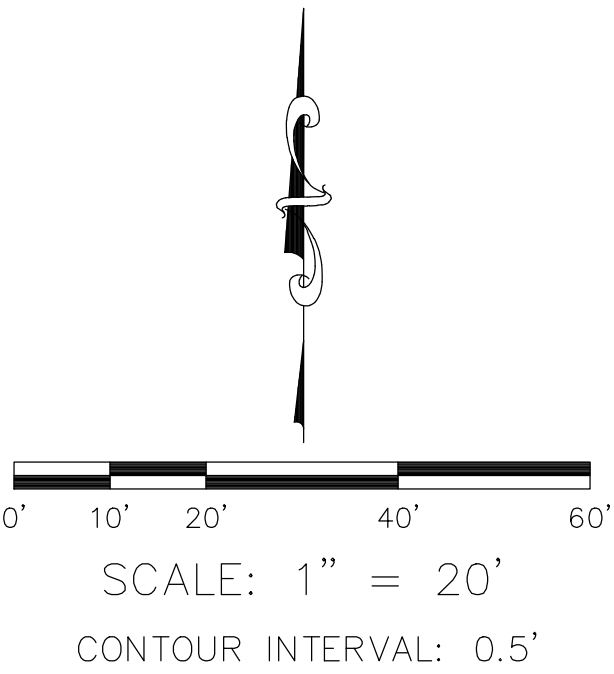
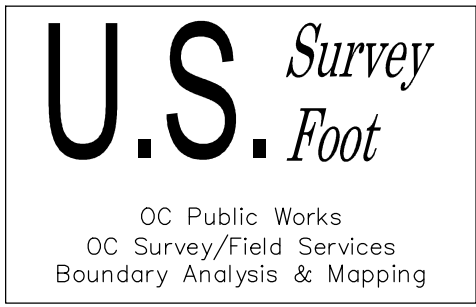
ABBREVIATION

- BM Benchmark
- CP Control Point
- DWY Driveway
- EL Elevation
- FL Flowline
- FD Found
- INV Invert
- PVC Polyvinyl Chloride

NOTES

ALL RIGHT OF WAY LINES SHOWN HEREON ARE BASED ON THE OC LANDBASE. THEY ARE PLACED HEREON FOR REFERENCE PURPOSES ONLY AND ARE APPROXIMATE IN LOCATION. A BOUNDARY SURVEY WAS NOT PERFORMED.

* THE DASHED CONTOUR LINETYPE AND ALL CONTOUR LABELS WITH AN ASTERISK ARE FOR THE ROAD SURFACE, AND ALL LABELS WITH NO ASTERISK ARE FOR THE BOTTOM OF THE CHANNEL SURFACE.



		COUNTY OF ORANGE OC PUBLIC WORKS OC CONSTRUCTION/ SURVEY-FIELD SERVICES	
		SANTA ANA-DELHI CHANNEL (F01) DEBRIS BOOM PROJECT 2025	
		TOPOGRAPHIC MAP	
		PROJECT LIMITS: FROM THE BRISTOL ST AND CHANNEL INTERSECTION TO APPROXIMATELY 2,400' DOWNSTREAM ALONG THE CHANNEL	
		DATE OF SURVEY: MAY 2025	BY: A. PAYAN & PARTY
		MAPPING	BY: J. PEDRETTI, EIT, LSIT
		OFFICE CHECK	BY: E. MEDINA, PLS
		FIELD CHECK	BY: M. KUBISTY, PLS
		SCALE: 1"=20'	W.O. #EE24401S
		FILE: #2425PW-PM0002	
		FILE: DELHI_CHAN_DEBRIS_BOOM_TOPO_2025.DWG	
MARK	DATE	ITEM	
REVISIONS			

SEE SHEET 4

SANTA ANA COUNTRY CLUB
20382 NEWPORT BLVD

APN 439-312-14
1300 BRISTOL ST

APN 439-312-14
1300 BRISTOL ST

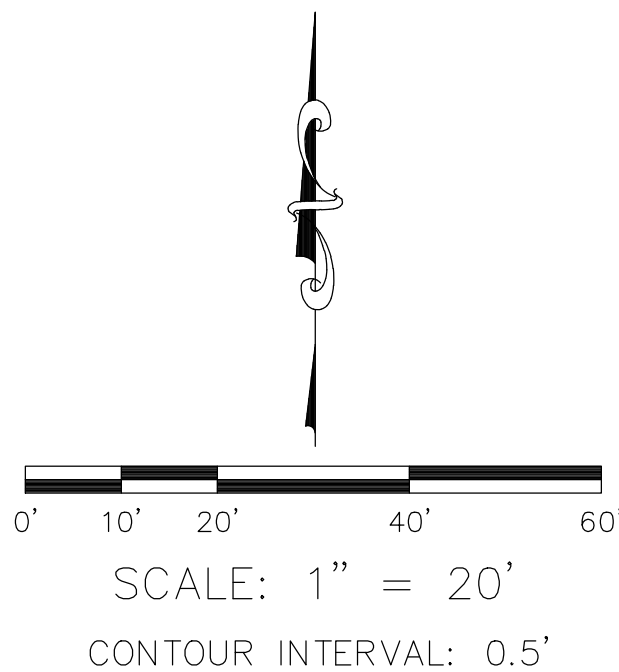
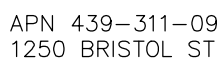
SYMBOL	
	Curb Drain/Weep Hole
	Drop Inlet
	Gate, Single
	Grate Inlet
	Guy Wire Anchor
	Manhole Sewer
	Manhole Storm Drain
	Post
	Sign Post
	Tree
	Utility Pole w/ 1 Light
	Utility Pole, Underground
	Utility Warning Sign
	Valve Water
	Valve Undefined
	Vault Traffic

	Block Wall
	Centerline
	Concrete Wall
	Edge of Concrete
	Edge of Asphalt Pavement
	Exposed Pipe
	Fence Chainlink
	Fence Post and Wire
	Fence Wood
	Flowline
	Grade Line
	Guard Rail
	Hinge Point
	Retaining Wall
	Right of Way
	Striping

	Concrete
	Dirt
	Gravel
	Wood

ABBREVIATION	
BM	Benchmark
CP	Control Point
DWY	Driveway
EL	Elevation
FL	Flowline
FD	Found
INV	Invert
PVC	Polyvinyl Chloride

BM	Benchmark
CP	Control Point
DWY	Driveway
EL	Elevation
FL	Flowline
FD	Found
INV	Invert
PVC	Polyvinyl Chloride



ALL RIGHT OF WAY LINES SHOWN HEREON ARE BASED ON THE OC LANDBASE.
THEY ARE PLACED HEREON FOR REFERENCE PURPOSES ONLY AND ARE
APPROXIMATE IN LOCATION. A BOUNDARY SURVEY WAS NOT PERFORMED.

* THE DASHED CONTOUR LINETYPE AND ALL CONTOUR LABELS WITH AN
 ASTERISK ARE FOR THE ROAD SURFACE, AND ALL LABELS WITH NO ASTERISK
 ARE FOR THE BOTTOM OF THE CHANNEL SURFACE.

OC Public Works
OC Survey/Field Services
Boundary Analysis & Mapping

			COUNTY OF ORANGE OC PUBLIC WORKS OC CONSTRUCTION/ SURVEY-FIELD SERVICES		
			SANTA ANA-DELHI CHANNEL (F01) DEBRIS BOOM PROJECT 2025		
			TOPOGRAPHIC MAP		
			PROJECT LIMITS: FROM THE BRISTOL ST AND CHANNEL INTERSECTION TO APPROXIMATELY 2,400' DOWNSTREAM ALONG THE CHANNEL		
			DATE OF SURVEY: MAY 2025		SHEET NO. 6 of 6
			MAPPING		
			OFFICE CHECK		
			FIELD CHECK		
MARK	DATE	ITEM	SCALE: 1"=20' W.O. #EE24401S FILE #2425PW-PM0002 FILE: DELHI CHAN DEBRIS BOOM_TOPO_2025.DWG		
REVISIONS					