

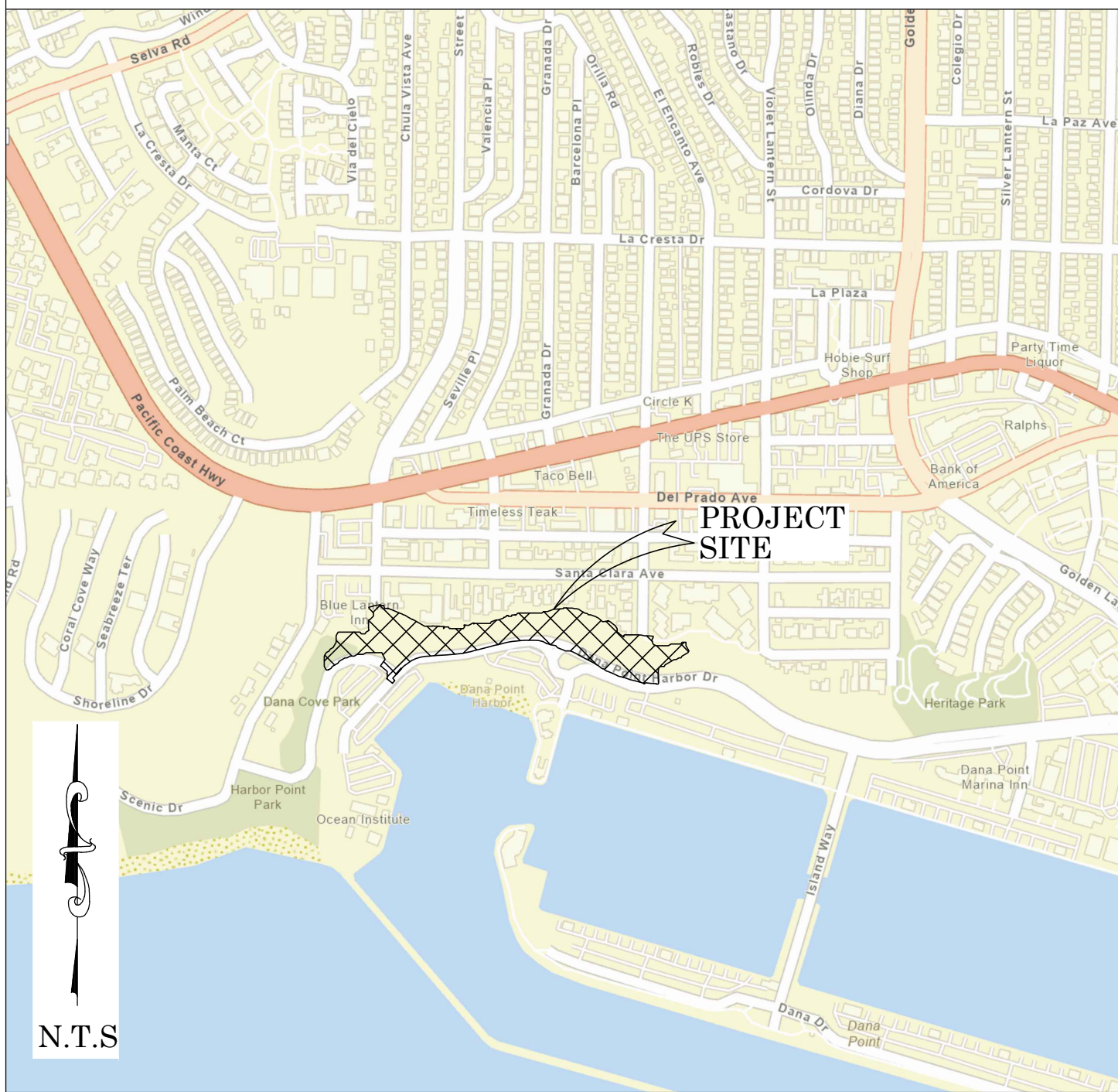


OC PUBLIC WORKS DEPARTMENT
JAMES TREADAWAY, DIRECTOR OF PUBLIC WORKS
KEVIN HILLS, COUNTY SURVEYOR
DANA POINT HARBOR



ROCKFALL MITIGATION

LOCATION MAP



N.T.S.

SENIOR LAND SURVEYOR'S CERTIFICATE:

THIS MAP CORRECTLY REPRESENTS A SURVEY MADE BY ME OR UNDER MY DIRECTION IN CONFORMANCE WITH REQUIREMENTS OF THE PROFESSIONAL LAND SURVEYOR'S ACT, THIS 1 DAY OF FEBRUARY, 2023.

Jesom Moreno

JESOM MORENO, PLS. SENIOR LAND SURVEYOR



DEPUTY COUNTY SURVEYOR'S STATEMENT:

THIS MAP HAS BEEN EXAMINED IN ACCORDANCE WITH THE PROFESSIONAL LAND SURVEYOR'S ACT; THIS 1 DAY OF FEBRUARY, 2023.

Michael Lafontaine

MICHAEL LAFONTAINE, PLS. DEPUTY COUNTY SURVEYOR



TOPOGRAPHIC MAPPING PROJECT



BASIS OF BEARINGS

THE BASIS OF BEARINGS FOR THIS SURVEY IS BASED ON THE CALIFORNIA COORDINATE SYSTEM (CCS83), ZONE VI, NAD 83, OCS (2017.50) EPOCH ADJUSTMENT, AS DETERMINED LOCALLY BY A LINE BETWEEN CONTINUOUS GLOBAL POSITIONING STATIONS CGPS STATIONS (RMVJ) AND (SBCC) BEING NORTH 52°10'47" WEST AS DERIVED FROM THE COORDINATES PUBLISHED BY THE CALIFORNIA SPATIAL REFERENCE CENTER (CSRC) ALONG WITH DATA SHEETS ON FILE IN THE OFFICE OF THE ORANGE COUNTY SURVEYOR.

HORIZONTAL DATUM

COORDINATES SHOWN ARE BASED ON THE CALIFORNIA COORDINATE SYSTEM (CCS83), ZONE VI, NAD 83, OCS (2017.50) EPOCH ADJUSTMENT.
ALL DISTANCES SHOWN ARE GRID, UNLESS OTHERWISE NOTED. TO OBTAIN GROUND DISTANCES MULTIPLY GRID BY A COMBINED FACTOR OF 1.00004549.
THIS COMBINATION FACTOR WAS HELD AT: CP# 505
N: 2115728.27 E: 6118331.90 EL: 154.52'
ALL DISTANCES ARE BASED ON THE U.S. SURVEY FOOT.

VERTICAL DATUM

BM. 3RR-2-82 ELEV. = 16.260' YEAR LEVELED: 1997
NAVD 1988 (O.C.S. 1995 ADJUSTMENT)
DESCRIPTION: FOUND 3 3/4" ALUMINUM BENCHMARK DISK STAMPED "3RR-2-82" SET IN THE SOUTHEAST CORNER OF A 4.0 FT. X 4.5 FT. CONCRETE CATCH BASIN. MONUMENT IS LOCATED APPROXIMATELY 0.5 MILES WESTERLY ALONG DANA POINT HARBOR DRIVE FROM ITS INTERSECTION WITH DEL PRADO STREET, WHERE TWO CONCRETE CATCH BASINS FALL RADIAL ACROSS SAID DRIVE, 35.8 FT. SOUTHERLY OF THE CENTERLINE OF DANA POINT HARBOR DRIVE, 112.2 FT. SOUTHWESTERLY OF STREET LIGHT POLE #225684GM20, 40.8 FT. SOUTHEASTERLY OF STREET LIGHT POLE #225685GM20, 40.6 FT. WESTERLY OF A "NO STOPPING AT ANY TIME" SIGN. MONUMENT IS SET LEVEL WITH THE SIDEWALK.

NOTES

THE SURVEY INFORMATION SHOWN HEREON IS TO BE USED FOR TOPOGRAPHIC RELATIONSHIPS ONLY AND IS NOT INTENDED FOR LAND ACQUISITION OR BOUNDARY PURPOSES.

SHEET INDEX

SHEET NO.	DESCRIPTION
SHEET 1	TITLE SHEET
SHEET 2-3	BOUNDARY MAP
SHEETS 4	TOPOGRAPHIC MAP

PURPOSE OF SURVEY

THE PURPOSE OF THE SURVEY IS TO PROVIDE A TOPOGRAPHIC MAP AND RIGHT OF WAY ESTABLISHMENT FOR THIS PORTION OF ROADWAY/CHANNEL/FACILITY.

		COUNTY OF ORANGE OC PUBLIC WORKS OC SURVEY/FIELD SERVICES/BOUNDARY ANALYSIS & MAPPING	
		DANA POINT HARBOR ROCKFALL MITIGATION	
		TITLE SHEET	
		PROJECT LIMITS: FROM COVE ROAD NE'LY ALONG DANA POINT HARBOR	
		DATE OF SURVEY: 10/3/2022	BY: J. JOHNS & CREW
		MAPPING	BY: I. ISLAS
		OFFICE CHECK	BY: J. MORENO, PLS
		FIELD CHECK	BY: J. JOHNS & CREW
		SCALE: N.T.S.	W.O. #EC41885
		FILE: DANA POINT HARBOR_TOPO_2022.DWG	
MARK	DATE	ITEM	REVISIONS
		SHEET NO. 1 of 4	

MONUMENT NOTES

- 1

FOUND GEAR SPIKE AND WASHER STAMPED LS 6970 FLUSH IN AC, PER R34, ACCEPTED AS THE CENTERLINE INTERSECTION OF SANTA CLARA AVE AND STREET OF THE AMBER LANTERN.
- 2

FOUND SPIKE IN TC STAMPED LS 5831, PER R16, ACCEPTED AS A POINT ON CENTERLINE OF STREET OF THE AMBER LANTERN.
- 3

FOUND MAG NAIL. WITH OCS WASHER, PER R35, DN. 0.1 FEET, ACCEPTED AS A POINT ON CENTERLINE OF DANA POINT HARBOR DR.
- 4

FOUND SPIKE SHANK DN. 0.1 FEET IN AC, PER R39, ACCEPTED AS INTERSECTION OF COVE RD AND DANA POINT HARBOR DR. R5
- 5

FOUND BOAT SPIKE AND OCS WASHER, PER R40, DN. 0.15 FEET IN AC, ACCEPTED AS THE BC OF DANA POINT HARBOR DRIVE CENTERLINE.
- 6

FOUND BOAT SPIKE AND 1 1/2” BRASS WASHER STAMPED “OCS” PER R40, FLUSH IN AC, ACCEPTED AS A POINT OF INTERSECTION OF DANA POINT HARBOR DRIVE CENTERLINE.
- 7

FOUND TACK AND 1 1/4” OCS TAG, PER R40, IN EPOXY FLUSH IN AC, ACCEPTED AS THE EC OF DANA POINT HARBOR DRIVE CENTERLINE.
- 8

FOUND BOAT SPIKE AND OCS WASHER, PER R3, DN. 0.1 FEET, ACCEPTED AS A POINT ON TANGENT AND N86°00’25”E 0.11 FEET FROM BC CENTERLINE OF DANA POINT HARBOR DRIVE.
- 9

FOUND SPIKE AND 1 1/2” BRASS WASHER STAMPED “OCS” DN .02 FEET IN AC PER R43, ACCEPTED AS A POINT OF INTERSECTION OF DANA POINT HARBOR DRIVE CENTERLINE.
- 10

FOUND TACK AND 1 1/4” OCS TAG, PER R41, IN EPOXY FLUSH IN AC, ACCEPTED AS POINT ON TANGENT AND S75°35’40”W 0.16 FEET FROM EC CENTERLINE OF DANA POINT HARBOR DRIVE.
- 11

FOUND BOAT SPIKE AND OCS WASHER, PER R42, DN. 0.1 FEET, ACCEPTED AS THE BC OF DANA POINT HARBOR DRIVE CENTERLINE.
- 12

FOUND SPIKE AND 1 1/2” BRASS WASHER STAMPED “OCS” DN .02 FEET IN AC PER R42, ACCEPTED AS A POINT OF INTERSECTION OF DANA POINT HARBOR DRIVE CENTERLINE.
- 13

FOUND BOAT SPIKE AND OCS WASHER, PER R6, DN. 0.15 FEET, ACCEPTED AS THE EC OF DANA POINT HARBOR DRIVE CENTERLINE.
- 14

FOUND BOAT SPIKE AND OCS WASHER, PER R6, DN. 0.15 FEET, ACCEPTED AS THE ANGLE POINT IN DANA POINT HARBOR DRIVE CENTERLINE.
- 20

FOUND 1 INCH IRON PIPE AND 1 1/4” TAG STAMPED “OCS 61”, PER R6, UP 0.2 FEET IN DIRT, ACCEPTED AS A POINT ON SETTLEMENT AGREEMENT LINE.
- 21

FOUND 1 INCH IRON PIPE, PER R6, NO TAG, DN. 0.5 FEET IN DIRT, ACCEPTED AS A POINT ON SETTLEMENT AGREEMENT LINE.
- 22

FOUND 1 INCH IRON PIPE, PER R6, TAG ILLEGIBLE DN. 1.0 FEET IN DIRT , ACCEPTED AS A POINT ON SETTLEMENT AGREEMENT LINE.
- 23

FOUND 1 INCH IRON PIPE AND 1 1/4” TAG STAMPED “OCS 58”, PER R6 FLUSH IN DIRT, ACCEPTED AS A POINT ON SETTLEMENT AGREEMENT LINE.
- 24

FOUND 1 INCH IRON PIPE AND 1 1/4” TAG STAMPED “OCS 56”, PER R6 DN. 0.5 FEET IN DIRT, ACCEPTED AS A POINT ON SETTLEMENT AGREEMENT LINE.
- 25

FOUND 1 INCH IRON PIPE AND 1 1/4” TAG STAMPED “OCS 52”, PER R6 DN 0.7 FEET IN DIRT, ACCEPTED AS A POINT ON SETTLEMENT AGREEMENT LINE.
- 26

FOUND 1 INCH IRON PIPE AND 1 1/4” TAG STAMPED “OCS 49” PER R6 DN. 2.0 FEET IN DIRT, ACCEPTED AS A POINT ON SETTLEMENT AGREEMENT LINE.
- 27

FOUND 1 INCH IRON PIPE AND 1 1/4” TAG STAMPED “OCS 48” PER R6, DN. 1.5 FEET IN DIRT, ACCEPTED AS A POINT ON SETTLEMENT AGREEMENT LINE.
- 28

FOUND 1 INCH IRON PIPE AND 1 1/4” TAG STAMPED “OCS 47” PER R6, FLUSH IN DIRT, ACCEPTED AS A POINT ON SETTLEMENT AGREEMENT LINE.
- 29

FOUND 1 INCH IRON PIPE AND 1 1/4” TAG STAMPED “OCS 46” PER R6, UP 0.1 FEET ON DIRT, ACCEPTED AS A POINT ON SETTLEMENT AGREEMENT LINE.
- 30

FOUND 1 INCH IRON PIPE AND 1 1/4” TAG STAMPED “OCS 44” PER R6, DN. 0.5 FEET IN DIRT, ACCEPTED AS A POINT ON SETTLEMENT AGREEMENT LINE.
- 31

FOUND 1 INCH IRON PIPE AND 1 1/4” TAG STAMPED “OCS 43” PER R6, DN. 0.5 FEET IN DIRT, ACCEPTED AS A POINT ON SETTLEMENT AGREEMENT LINE.
- 32

FOUND 1 INCH IRON PIPE AND 1 1/4” TAG STAMPED “OCS 41” PER R6, DN. 0.3 FEET IN DIRT, ACCEPTED AS A POINT ON SETTLEMENT AGREEMENT LINE.
- 33

FOUND 1 INCH IRON PIPE AND 1 1/4” TAG STAMPED “OCS 39” PER R6, DN. 1.3 FEET IN DIRT, ACCEPTED AS A POINT ON SETTLEMENT AGREEMENT LINE.
- 34

FOUND 1 INCH IRON PIPE AND 1 1/4” TAG STAMPED “OCS 37” PER R6, DN. 1.0 FOOT IN DIRT, ACCEPTED AS A POINT ON SETTLEMENT AGREEMENT LINE.
- 35

FOUND 1 INCH IRON PIPE AND 1 1/4” TAG, PER R6, STAMPED “OCS 36” UP 0.6 FEET IN DIRT, ACCEPTED AS A POINT ON SETTLEMENT AGREEMENT LINE.
- 36

FOUND 1 INCH IRON PIPE AND 1 1/4” TAG STAMPED “OCS 34” PER R6, DN. 1.0 FOOT IN DIRT, ACCEPTED AS A POINT ON SETTLEMENT AGREEMENT LINE.
- 37

FOUND 1 INCH IRON PIPE AND 1 1/4” TAG STAMPED “OCS 33” PER R6, DN. 1.0 FOOT IN DIRT, ACCEPTED AS A POINT ON SETTLEMENT AGREEMENT LINE.
- 38

FOUND 1 INCH IRON PIPE AND 1 1/4” TAG STAMPED “OCS 32” PER R6, DN. 0.8 FEET IN DIRT, ACCEPTED AS A POINT ON SETTLEMENT AGREEMENT LINE.
- 39

FOUND 1 INCH IRON PIPE, PER R6, NO TAG DN. 0.8 FEET IN DIRT, ACCEPTED AS A POINT ON SETTLEMENT AGREEMENT LINE.
- 40

FOUND 1 INCH IRON PIPE AND 1 1/4” TAG, PER R6, STAMPED “OCS 30” DN. 1.5 FEET IN DIRT, ACCEPTED AS A POINT ON SETTLEMENT AGREEMENT LINE.

ESTABLISHMENT NOTES

- A

SEARCHED FOUND NOTHING, ESTABLISHED THE CENTERLINE INTERSECTION OF THE STREET OF THE GREEN LANTERN AND SANTA CLARA AVENUE BY TIES PER R25
- B

SEARCHED FOUND NOTHING, ESTABLISHED THE CENTERLINE INTERSECTION OF THE STREET OF THE BLUE LANTERN AND SANTA CLARA AVENUE BY TIES PER R26
- C

SEARCHED FOUND NOTHING, ESTABLISHED THE CENTERLINE INTERSECTION OF THE STREET OF THE RUBY LANTERN AND SANTA CLARA AVENUE BY TIES PER R27
- D

ESTABLISHED THE CENTERLINE OF SANTA CLARA AVENUE BY HOLDING A LINE BETWEEN MONUMENT NOTE 1 AND ESTABLISHMENT NOTE A
- E

ESTABLISHED THE CENTERLINE OF THE STREET OF AMBER LANTERN BY HOLDING MONUMENT NOTES 1 AND 2
- F

SEARCHED FOUND NOTHING, ESTABLISHED THE CENTERLINE BC ON COVE DRIVE BY TIES PER R31
- G

ESTABLISHED THE CENTERLINE OF COVE DRIVE BY LEAST SQUARES ADJUSTMENT BETWEEN ESTABLISHMENT NOTE H AND MONUMENT NOTE 9 PER R5
- H

ESTABLISHED THE CENTERLINE OF DANA POINT HARBOR DRIVE BY HOLDING A LINE BETWEEN MONUMENT NOTES 3 AND 6
- I

ESTABLISHED THE CENTERLINE OF DANA POINT HARBOR DRIVE BY HOLDING A LINE BETWEEN MONUMENT NOTES 6 AND 9
- J

ESTABLISHED THE CENTERLINE OF DANA POINT HARBOR DRIVE BY HOLDING A LINE BETWEEN MONUMENT NOTES 9 AND 12
- K

ESTABLISHED THE CENTERLINE OF DANA POINT HARBOR DRIVE BY HOLDING A LINE BETWEEN MONUMENT NOTES 13 AND 14
- L

ESTABLISHED THE CENTERLINE OF DANA POINT HARBOR BY HOLDING A RECORD RADIUS OF 185.00 FEET PER R6 AND TANGENT TO LINE ESTABLISHMENT NOTE H AND I
- M

ESTABLISHED THE CENTERLINE OF DANA POINT HARBOR BY HOLDING A RECORD RADIUS OF 500.00 FEET PER R6 AND TANGENT TO LINE ESTABLISHMENT NOTE I AND I
- N

ESTABLISHED THE CENTERLINE OF DANA POINT HARBOR BY LEAST SQUARES ADJUSTMENT BETWEEN MONUMENT NOTES 12 AND 13 PER R6
- O

ESTABLISHED THE CENTERLINE OF DANA POINT HARBOR BY HOLDING RECORD ANGLES, AND DISTANCES PER R6 SW’LY AND E’LY FROM MONUMENT NOTE 14
- A

ESTABLISHED THE CENTERLINE OF THE STREET OF THE BLUE LANTERN BY HOLDING A RECORD ANGLE, AND DISTANCE PER R6 SW’LY FROM ESTABLISHMENT NOTE B
- A

ESTABLISHED THE TIE LINE FROM ESTABLISHMENT NOTE H TO THE MOST NORTHWESTERLY POINT OF THE SETTLEMENT AGREEMENT LINE PER R6 BY HOLDING RECORD ANGLE FROM THE S’LY TERMINUS OF ESTABLISHMENT NOTE TO THE INTERSECTION OF THE E’LY R/W LINE OF THE STREET OF THE BLUE LANTERN
- A

ESTABLISHED THE GENERAL N’LY LINE OF SETTLEMENT AGREEMENT LINE PER R6 BY HOLDING RECORD ANGLE AND DISTANCES FROM THE SE’LY TERMINUS OF ESTABLISHMENT NOTE A TO MONUMENT NOTE 20
- A

ESTABLISHED THE N’LY SETTLEMENT AGREEMENT LINE PER R6, BY HOLDING A LINE BETWEEN MONUMENT NOTES 20 AND 21
- A

ESTABLISHED THE N’LY SETTLEMENT AGREEMENT LINE PER R6, BY HOLDING A LINE BETWEEN MONUMENT NOTES 21 AND 22
- A

ESTABLISHED THE N’LY SETTLEMENT AGREEMENT LINE PER R6, BY HOLDING A LINE BETWEEN MONUMENT NOTES 22 AND 23
- A

ESTABLISHED THE N’LY SETTLEMENT AGREEMENT LINE PER R6, BY DISTANCE DISTANCE INTERSECT BETWEEN MONUMENT NOTES 23 AND 24
- A

ESTABLISHED THE N’LY SETTLEMENT AGREEMENT LINE PER R6, BY GRANT BOUNDARY ADJUSTMENT BETWEEN MONUMENT NOTES 24 AND 25
- A

ESTABLISHED THE N’LY SETTLEMENT AGREEMENT LINE PER R6, BY GRANT BOUNDARY ADJUSTMENT BETWEEN MONUMENT NOTES 25 AND 26
- A

ESTABLISHED THE N’LY SETTLEMENT AGREEMENT LINE PER R6, BY HOLDING A LINE BETWEEN MONUMENT NOTES 26 AND 27
- A

ESTABLISHED THE N’LY SETTLEMENT AGREEMENT LINE PER R6, BY HOLDING A LINE BETWEEN MONUMENT NOTES 27 AND 28
- A

ESTABLISHED THE N’LY SETTLEMENT AGREEMENT LINE PER R6, BY HOLDING A LINE BETWEEN MONUMENT NOTES 28 AND 29
- A

ESTABLISHED THE N’LY SETTLEMENT AGREEMENT LINE PER R6, BY DISTANCE DISTANCE INTERSECT BETWEEN MONUMENT NOTES 29 AND 30
- A

ESTABLISHED THE N’LY SETTLEMENT AGREEMENT LINE PER R6, BY HOLDING A LINE BETWEEN MONUMENT NOTES 30 AND 31
- A

ESTABLISHED THE N’LY SETTLEMENT AGREEMENT LINE PER R6, BY DISTANCE DISTANCE INTERSECT BETWEEN MONUMENT NOTES 31 AND 32
- A

ESTABLISHED THE N’LY SETTLEMENT AGREEMENT LINE PER R6, BY DISTANCE DISTANCE INTERSECT BETWEEN MONUMENT NOTES 32 AND 33
- A

ESTABLISHED THE N’LY SETTLEMENT AGREEMENT LINE PER R6, BY DISTANCE DISTANCE INTERSECT BETWEEN MONUMENT NOTES 33 AND 34
- A

ESTABLISHED THE N’LY SETTLEMENT AGREEMENT LINE PER R6, BY HOLDING A LINE BETWEEN MONUMENT NOTES 34 AND 35
- A

ESTABLISHED THE N’LY SETTLEMENT AGREEMENT LINE PER R6, BY DISTANCE DISTANCE INTERSECT BETWEEN MONUMENT NOTES 35 AND 36
- A

ESTABLISHED THE N’LY SETTLEMENT AGREEMENT LINE PER R6, BY HOLDING A LINE BETWEEN MONUMENT NOTES 36 AND 37
- A

ESTABLISHED THE N’LY SETTLEMENT AGREEMENT LINE PER R6, BY HOLDING A LINE BETWEEN MONUMENT NOTES 37 AND 38
- A

ESTABLISHED THE N’LY SETTLEMENT AGREEMENT LINE PER R6, BY HOLDING A LINE BETWEEN MONUMENT NOTES 38 AND 39
- A

ESTABLISHED THE N’LY SETTLEMENT AGREEMENT LINE PER R6, BY HOLDING A LINE BETWEEN MONUMENT NOTES 39 AND 40

NOTES

RECORD DISTANCES SHOWN HEREON ARE AS THEY APPEAR ON THE DOCUMENT OF RECORD. DISTANCES MAY BE EITHER GRID OR GROUND, AS PER SAID RECORD.

REFERENCE DOCUMENTS IN THE REFERENCE LEGEND ARE LIVE HYPERLINKS TO SAID DOCUMENT.

BASIS OF BEARINGS

THE BASIS OF BEARINGS FOR THIS SURVEY IS BASED ON THE CALIFORNIA COORDINATE SYSTEM (CCS83), ZONE VI, NAD 83, OCS (2017.50) EPOCH ADJUSTMENT, AS DETERMINED LOCALLY BY A LINE BETWEEN CONTINUOUS GLOBAL POSITIONING STATIONS CGPS STATIONS (RMVJ) AND (SBCC) BEING NORTH 52°10’47” WEST AS DERIVED FROM THE COORDINATES PUBLISHED BY THE CALIFORNIA SPATIAL REFERENCE CENTER (CSRC) ALONG WITH DATA SHEETS ON FILE IN THE OFFICE OF THE ORANGE COUNTY SURVEYOR.

HORIZONTAL DATUM

COORDINATES SHOWN ARE BASED ON THE CALIFORNIA COORDINATE SYSTEM (CCS83), ZONE VI, NAD 83, OCS (2017.50) EPOCH ADJUSTMENT.

ALL DISTANCES SHOWN ARE GRID, UNLESS OTHERWISE NOTED. TO OBTAIN GROUND DISTANCE MULTIPLY A GRID DISTANCE BY 1.00004549.

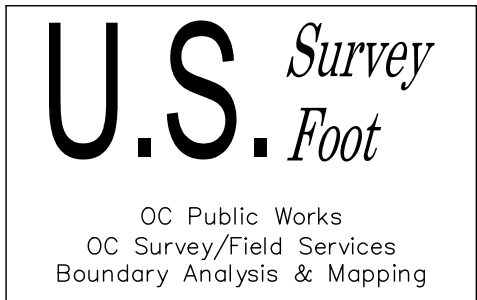
COMBINATION FACTOR WAS HELD AT POINT NUMBER CP# 505
N:2115728.27 E:6118331.90 EL:154.52

RECORD DISTANCES SHOWN HEREON ARE AS THEY APPEAR ON THE DOCUMENT OF RECORD. DISTANCES MAY BE EITHER GRID OR GROUND, AS PER SAID RECORD.

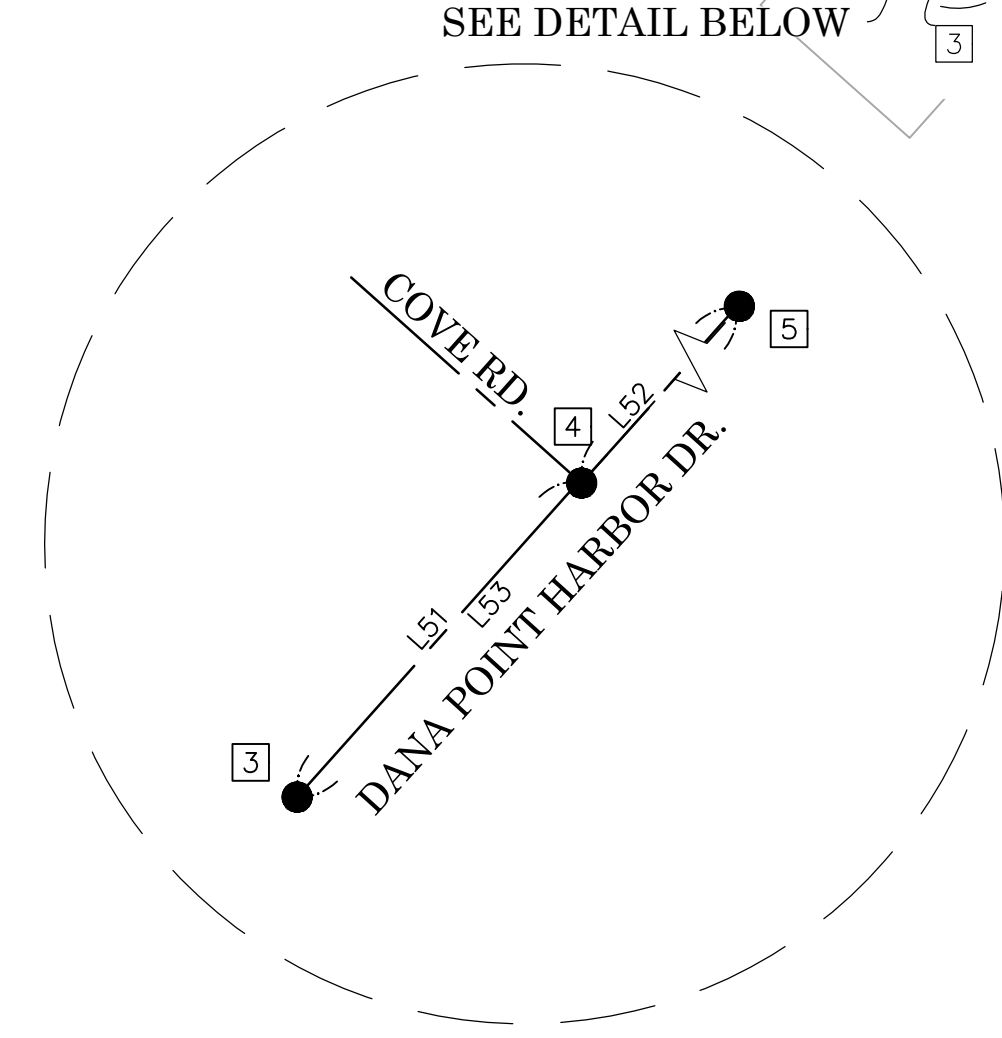
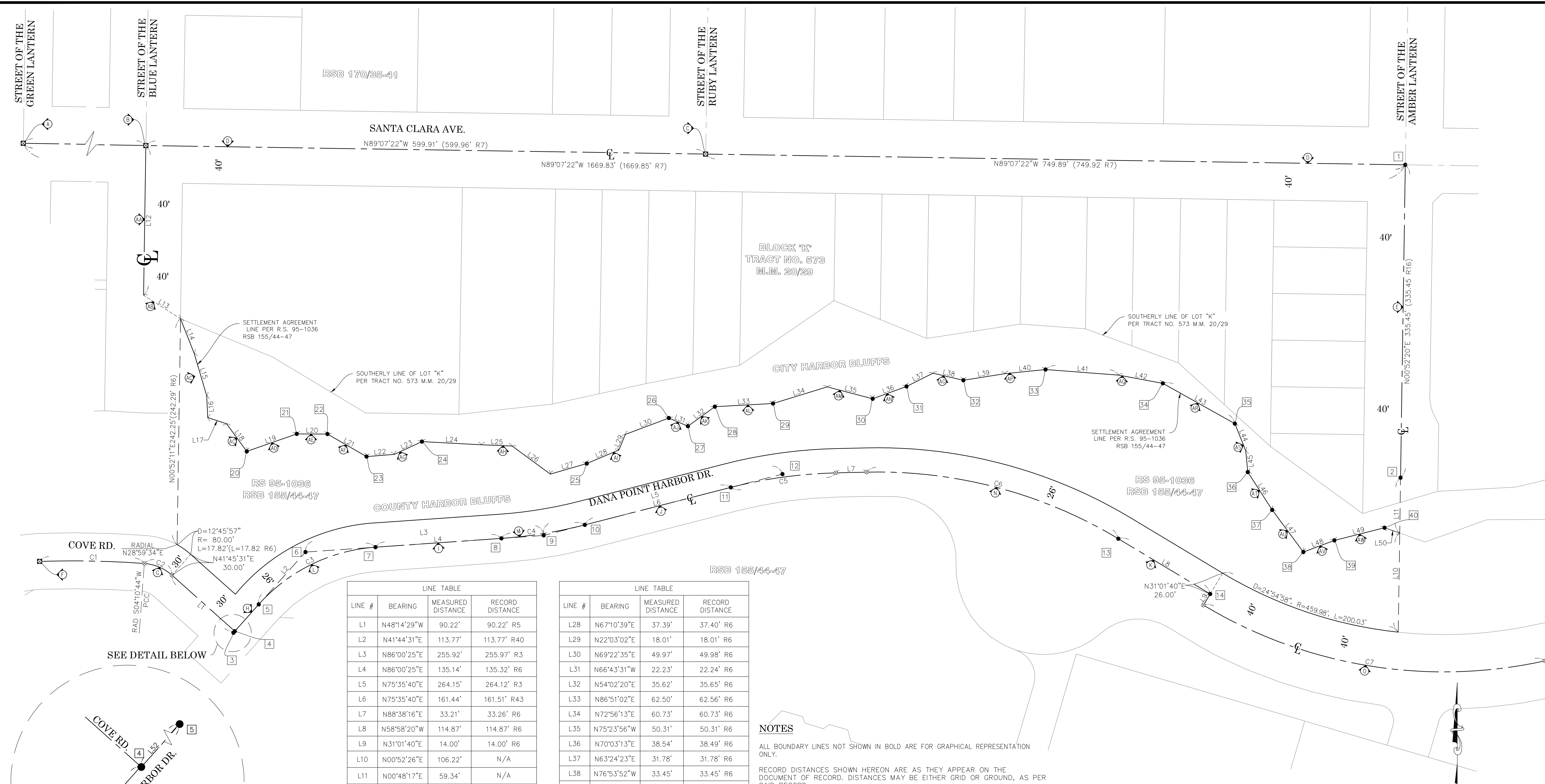
ALL DISTANCES ARE BASED ON THE U.S. SURVEY FOOT.

REFERENCES

- R1 = PARCEL MAP, P.M.B. 153/46
- R2 = PARCEL MAP, P.M.B. 151/49–50
- R3 = PARCEL MAP, P.M.B. 83/41
- R5 = RECORD OF SURVEY, R.S.B. 113/33
- R6 = RECORD OF SURVEY, R.S.B. 155/44–47
- R7 = RECORD OF SURVEY, R.S.B. 170/35–41
- R8 = RECORD OF SURVEY, R.S.B. 197/1–7
- R9 = RECORD OF SURVEY, R.S.B. 294/35–41
- R10 = RECORD OF SURVEY, R.S.B. 297/46
- R15 = TRACT NO. 9984, MM 433/31–32
- R16 = TRACT NO. 13193, MM 629/24–26
- R25 = CORNER RECORD, C.R. 2003–1175
- R26 = CORNER RECORD, C.R. 2003–1176
- R27 = CORNER RECORD, C.R. 2021–1087
- R28 = CORNER RECORD, C.R. 2020–1690
- R29 = CORNER RECORD, C.R. 2020–1691
- R30 = CORNER RECORD, C.R. 2020–1692
- R31 = CORNER RECORD, C.R. 2020–1693
- R32 = CORNER RECORD, C.R. 2003–1307
- R33 = CORNER RECORD, C.R. 2014–0755
- R34 = CORNER RECORD, C.R. 2003–1305
- R35 = CORNER RECORD, C.R. 2020–1694
- R36 = CORNER RECORD, C.R. 2021–2329
- R37 = CORNER RECORD, C.R. 2020–1782
- R38 = CORNER RECORD, C.R. 2015–1733
- R39 = CORNER RECORD, C.R. 2021–2325
- R40 = CORNER RECORD, C.R. 2021–2326
- R41 = CORNER RECORD, C.R. 2020–1696
- R42 = CORNER RECORD, C.R. 2020–1697
- R42 = CORNER RECORD, C.R. 2021–2327



			COUNTY OF ORANGE OC PUBLIC WORKS OC SURVEY/FIELD SERVICES/BOUNDARY ANALYSIS & MAPPING			
			DANA POINT HARBOR ROCKFALL MITIGATION			
			BOUNDARY MAP			
			PROJECT LIMITS:FROM COVE ROAD NE'LY ALONG DANA POINT HARBOR			
			DATE OF SURVEY:10/3/2022			
			DATE OF SURVEY:10/3/2022		BY:J. JOHNS & CREW	SHEET NO. 2 of 4
			MAPPING		BY:J. MORENO, PLS	
			OFFICE CHECK		BY:J. MORENO, PLS	
			FIELD CHECK		BY:J. JOHNS & CREW	
MARK	DATE	ITEM	SCALE:1" = ##'		W.O. #EC41885	FILE #2223PW-PM0002
		REVISIONS	FILE:DANA POINT HARBOR_BOUNDARY_2022.DWG			



LINE TABLE			
LINE #	BEARING	MEASURED DISTANCE	RECORD DISTANCE
L1	N48°14'29"W	90.22'	90.22' R5
L2	N41°44'31"E	113.77'	113.77' R40
L3	N86°00'25"E	255.92'	255.97' R3
L4	N86°00'25"E	135.14'	135.32' R6
L5	N75°35'40"E	264.15'	264.12' R3
L6	N75°35'40"E	161.44'	161.51' R43
L7	N88°38'16"E	33.21'	33.26' R6
L8	N58°58'20"W	114.87'	114.87' R6
L9	N31°01'40"E	14.00'	14.00' R6
L10	N00°52'26"E	106.22'	N/A
L11	N00°48'17"E	59.34'	N/A
L12	N00°52'52"E	160.51'	160.51' R6
L13	N57°33'13"W	46.97'	46.90' R6
L14	N21°28'13"W	39.92'	39.93' R6
L15	N16°31'31"W	47.39'	47.39' R6
L16	N02°31'14"W	23.40'	23.40' R6
L17	N71°47'03"W	21.32'	21.32' R6
L18	N36°09'52"W	36.68'	36.68' R6
L19	N70°39'14"E	56.75'	56.88' R6
L20	S89°42'59"E	32.93'	32.86' R6
L21	N59°58'25"W	48.31'	48.32' R6
L22	N85°26'12"E	29.91'	21.91' R6
L23	N65°09'54"E	32.59'	32.59' R6
L24	N86°55'04"W	63.96'	63.96' R6
L25	N87°45'37"W	32.82'	32.82' R6
L26	N53°39'07"W	50.78'	50.78' R6
L27	N73°52'54"E	40.64'	40.64' R6

LINE TABLE			
LINE #	BEARING	MEASURED DISTANCE	RECORD DISTANCE
L28	N67°10'39"E	37.39'	37.40' R6
L29	N22°03'02"E	18.01'	18.01' R6
L30	N69°22'35"E	49.97'	49.98' R6
L31	N66°43'31"W	22.23'	22.24' R6
L32	N54°02'20"E	35.62'	35.65' R6
L33	N86°51'02"E	62.50'	62.56' R6
L34	N72°56'13"E	60.73'	60.73' R6
L35	N75°23'56"W	50.31'	50.31' R6
L36	N70°03'13"E	38.54'	38.49' R6
L37	N63°24'23"E	31.78'	31.78' R6
L38	N76°53'52"W	33.45'	33.45' R6
L39	N80°56'43"E	45.25'	45.04' R6
L40	N84°12'08"E	43.61'	43.41' R6
L41	N85°37'20"W	78.62'	78.62' R6
L42	N79°22'12"W	48.11'	48.11' R6
L43	N60°45'58"W	88.40'	88.40' R6
L44	N21°54'54"W	31.31'	31.31' R6
L45	N05°28'08"W	22.96'	22.96' R6
L46	N32°47'48"W	48.23'	48.18' R6
L47	N36°29'52"W	56.20'	56.19' R6
L48	N69°22'27"E	35.51'	35.37' R6
L49	N75°50'52"E	55.43'	55.45' R6
L50	N70°45'04"W	17.28'	N/A
L51	S41°45'48"W	2.21'	N/A
L52	N41°43'33"E	38.54'	38.54' R6
L53	N41°45'00"E	40.75'	40.74' R36

NOTES

ALL BOUNDARY LINES NOT SHOWN IN BOLD ARE FOR GRAPHICAL REPRESENTATION ONLY.

RECORD DISTANCES SHOWN HEREON ARE AS THEY APPEAR ON THE DOCUMENT OF RECORD. DISTANCES MAY BE EITHER GRID OR GROUND, AS PER SAID RECORD.

REFERENCE DOCUMENTS IN THE REFERENCE LEGEND ARE LIVE HYPERLINKS TO SAID DOCUMENT.

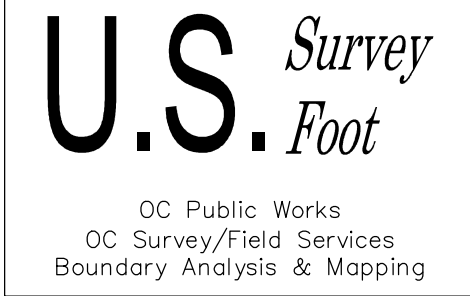
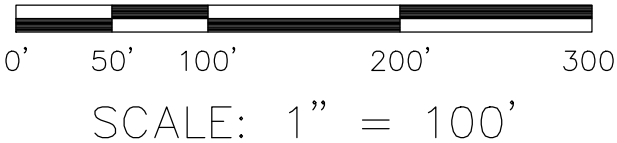
MONUMENT SYMBOLS CONTAIN LIVE HYPERLINKS TO IMAGES, IF THEY EXIST, OF RESPECTIVE MONUMENT.

SEE SHEET 2 FOR ESTABLISHMENT NOTES, MONUMENT NOTES, AND REFERENCES.

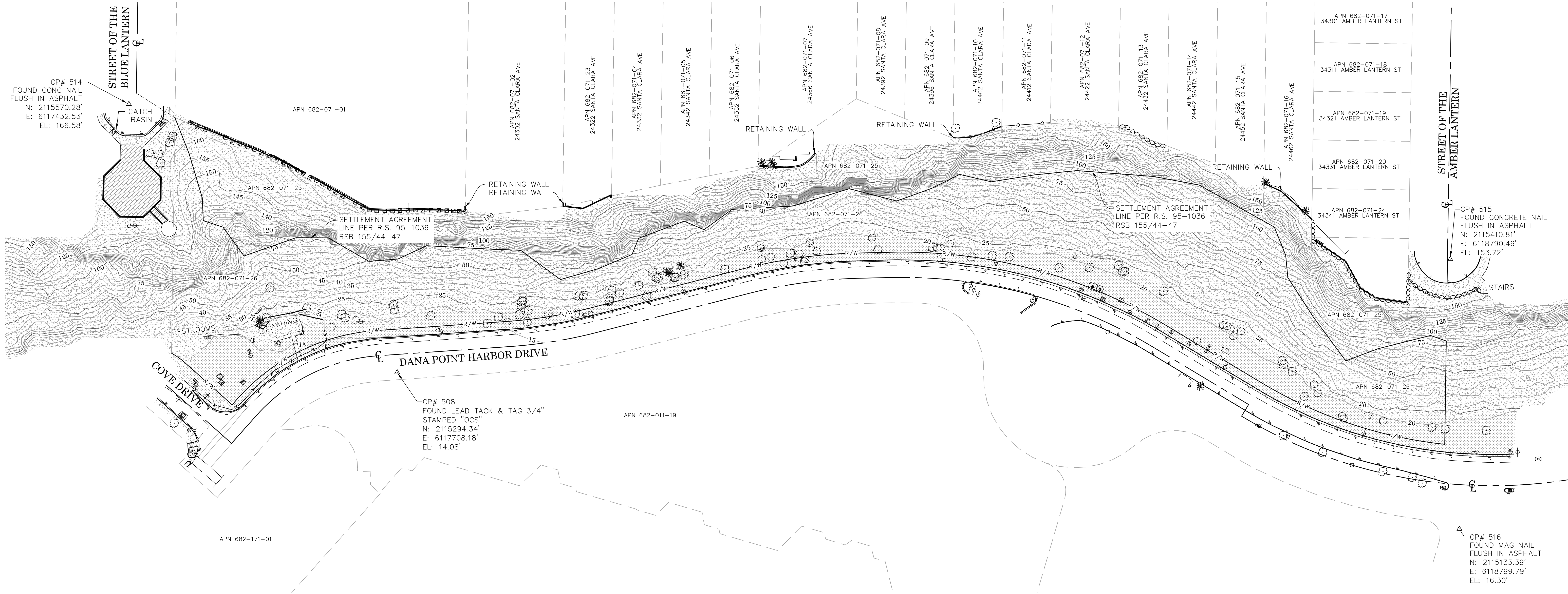
CURVE TABLE						
CURVE #	DELTA	RADIUS	LENGTH	RECORD DELTA	RECORD RADIUS	RECORD LENGTH
C1	6°07'32"	1049.86'	112.24'	06°07'43" R5	1050.00' R5	112.31' R5
C2	37°34'47"	50.00'	32.79'	37°33'22" R5	50.00 R5	32.77' R5
C3	44°15'25"	184.99'	142.89'	44°14'55" R6	185' R6	142.87' R6
C4	10°24'45"	499.98'	90.86'	10°23'26" R6	500.00' R6	90.67' R6
C5	12°56'27"	503.92'	113.81'	13°02'46" R6	500.00' R6	113.85' R6
C6	32°23'31"	499.89'	282.61'	32°22'15" R6	500.00' R6	282.49' R6
C7	43°32'45"	499.98'	379.99'	43°32'45" R6	500.00' R6	380.01' R6

LEGEND

- FOUND MONUMENT AS NOTED
- S.F.N., ESTABLISHED BY TIES
- R RECORD MAP
- ⊗ S.F.N.- SEARCHED, FOUND NOTHING



				COUNTY OF ORANGE OC PUBLIC WORKS OC SURVEY/FIELD SERVICES/BOUNDARY ANALYSIS & MAPPING					
				DANA POINT HARBOR ROCKFALL MITIGATION					
				BOUNDARY MAP					
				PROJECT LIMITS: FROM COVE ROAD NELY ALONG DANA POINT HARBOR					
				DATE OF SURVEY: 10/3/2022		BY: J. JOHNS & CREW		SHEET NO. 3 of 4	
				MAPPING		BY: J. MORENO, PLS			
OFFICE CHECK		BY: J. MORENO, PLS							
FIELD CHECK		BY: J. JOHNS & CREW							
SCALE: 1"=100'		W.O. #EC41885		FILE #2223PW-PM0002					
MARK	DATE	ITEM		FILE: DANA POINT HARBOR_BOUNDARY_2022.DWG					
		REVISIONS							



SYMBOL

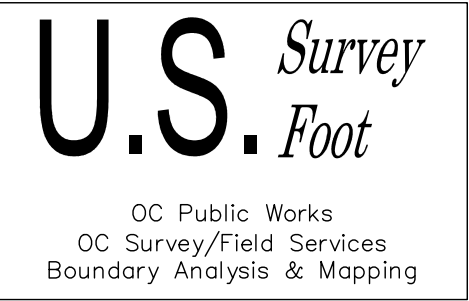
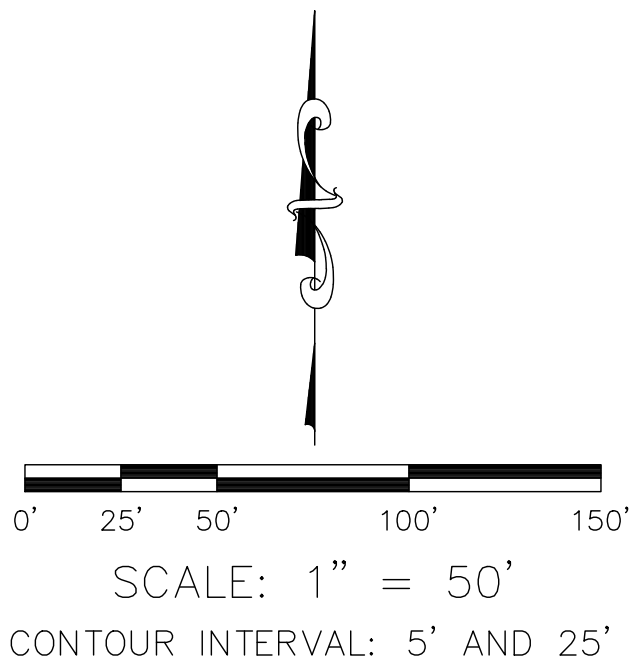
- Control Box Undefined
- Control Point
- Fire Hydrant
- Grate Inlet
- Light Pole, Double
- Manhole Electrical
- Manhole Sewer
- Manhole Storm Drain
- Meter Water
- Post
- Pull Box Irrigation
- Rock/Boulder
- Sign Post
- Tree
- Tree, Palm
- Valve Water
- Vault Electrical
- Vault Undefined
- Vault Water
- Vent Pipe
- Water Line
- Appurtenance-Cathodic Test

AREA PATTERN KEY

- Concrete
- Brick
- Dirt
- Grass

LINE PATTERN KEY

- Bush Row Outline
- Edge of Concrete
- Edge of Asphalt
- Pavement
- Fence Chainlink
- Fence Wrought Iron
- Fence Undefined
- Flowline
- Grade Line
- Roof Overhang
- Striping



		COUNTY OF ORANGE OC PUBLIC WORKS OC SURVEY/FIELD SERVICES/BOUNDARY ANALYSIS & MAPPING	
		DANA POINT HARBOR ROCKFALL MITIGATION	
		TITLE SHEET	
		PROJECT LIMITS: FROM COVE ROAD NE'LY ALONG DANA POINT HARBOR	
		DATE OF SURVEY: 10/3/2022	BY: J. JOHNS & CREW
		MAPPING	BY: I. ISLAS
		OFFICE CHECK	BY: J. MORENO, PLS
		FIELD CHECK	BY: J. JOHNS & CREW
		SCALE: 1"=50'	W.O. #EC41885
		FILE: DANA POINT HARBOR_TOPO_2022.DWG	
MARK	DATE	ITEM	REVISIONS