

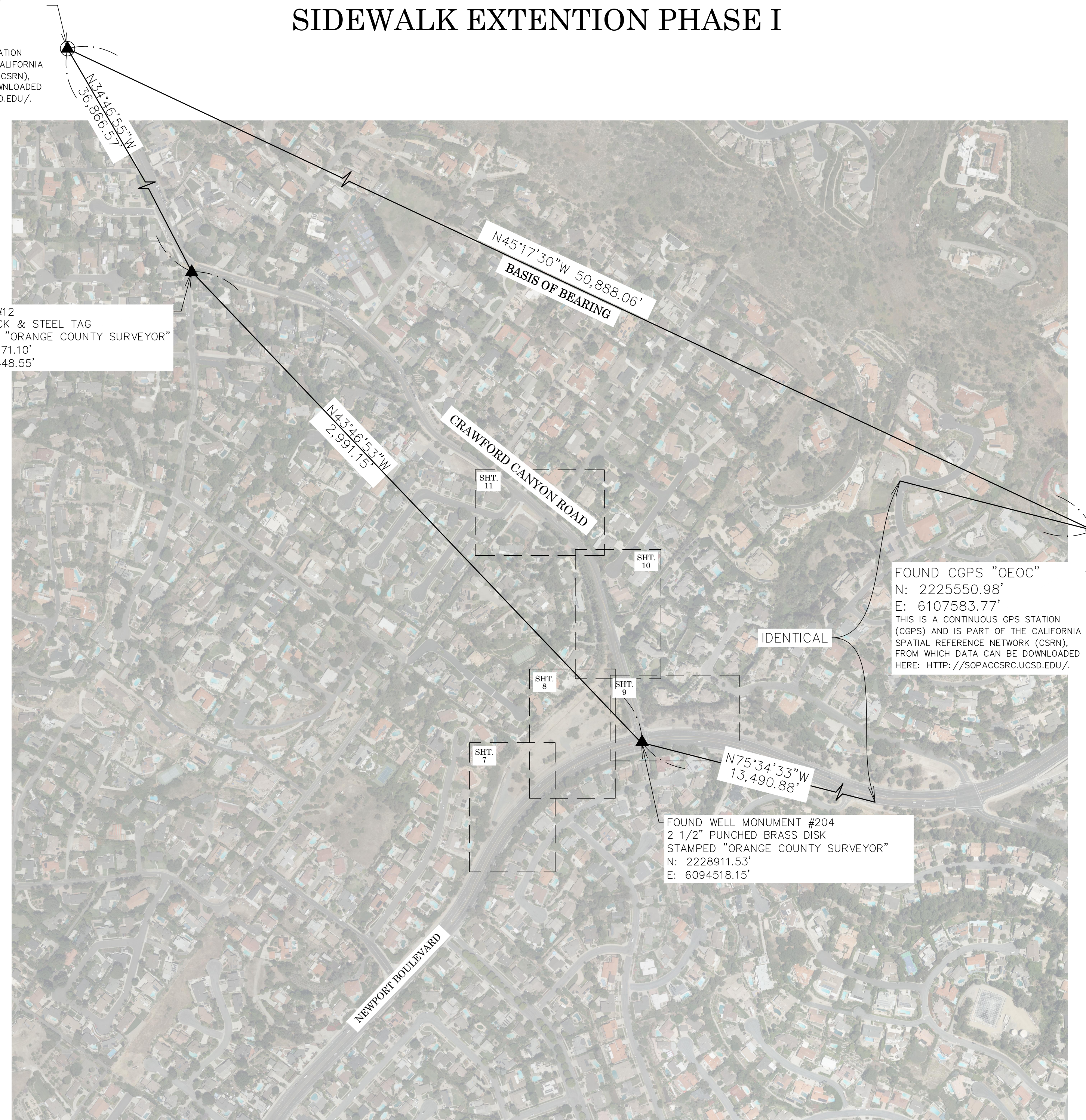
FOUND CGPS "CCCS"
N: 2261350.67'
E: 6071417.81'
THIS IS A CONTINUOUS GPS STATION
(CGPS) AND IS PART OF THE CALIFORNIA
SPATIAL REFERENCE NETWORK (CSRN),
FROM WHICH DATA CAN BE DOWNLOADED
HERE: [HTTP://SOPACCSR.CUCSD.EDU/](http://SOPACCSR.CUCSD.EDU/).

[illegible]

THIS MAP CORRECTLY REPRESENTS A SURVEY MADE BY ME
OR UNDER MY DIRECTION IN CONFORMANCE WITH
REQUIREMENTS OF THE PROFESSIONAL LAND SURVEYOR'S
ACT; THIS 9 DAY OF SEPTEMBER, 2020.

A circular professional seal for Michael Kubisty, a Licensed Land Surveyor in the State of California. The seal features the text "LICENSED LAND SURVEYOR" at the top, "MICHAEL KUBISTY" in the center, and "STATE OF CALIFORNIA" at the bottom, separated by two stars. The number "No. 8036" is printed below the center.

THIS MAP HAS BEEN EXAMINED IN ACCORDANCE WITH THE
PROFESSIONAL LAND SURVEYOR'S ACT; THIS 9 DAY OF
SEPTEMBER, 2020.



THE BASIS OF BEARINGS FOR THIS SURVEY IS BASED ON THE CALIFORNIA COORDINATE SYSTEM (CCCS83), ZONE VI, NAD 83, OCS (2017.50) EPOCH ADJUSTMENT, AS DETERMINED LOCALLY BY A LINE BETWEEN CONTINUOUS GLOBAL POSITIONING STATIONS COPS STATIONS (CCCS) AND (OECC) BEING NORTH 45°17'30" WEST AS DERIVED FROM THE COORDINATES PUBLISHED BY THE CALIFORNIA SPATIAL REFERENCE CENTER (CSRC) ALONG WITH DATA SHEETS ON FILE IN THE OFFICE OF THE ORANGE COUNTY SURVEYOR.

COORDINATES SHOWN ARE BASED ON THE CALIFORNIA COORDINATE SYSTEM (CCS83), ZONE VI, NAD 83, OCS (2017.50) EPOCH ADJUSTMENT.

ALL DISTANCES SHOWN ARE GRID, UNLESS OTHERWISE NOTED. TO OBTAIN GROUND DISTANCES MULTIPLY GRID BY A COMBINED FACTOR OF 1.000029521.

VERTICAL DATUM

NGVD 1988 (O.C.S. 1995 ADJUSTMENT)

THE BASIS OF STATIONING FOR THE CENTERLINE OF CRAWFORD CANYON ROAD SHOWN HEREON WAS ESTABLISHED BY HOLDING 19+29.32 AT THE CENTERLINE INTERSECTION OF CRAWFORD CANYON ROAD AND NEWPORT AVE PER RECORD DRAWING NO. 078PW-RD560019 DATED 01/18/1990 AND INCREASING N'WLY THEREFROM.

THE BASIS OF STATIONING FOR THE CENTERLINE OF NEWPORT AVE SHOWN HEREON WAS ESTABLISHED BY HOLDING 100+00 (ASSUMED) AT THE CENTERLINE INTERSECTION OF NEWPORT AVE & INCREASING N'WLY THEREFROM.

THE SURVEY INFORMATION SHOWN HEREON IS TO BE USED FOR TOPOGRAPHIC
RELATIONSHIPS ONLY AND IS NOT INTENDED FOR LAND ACQUISITION OR
BOUNDARY PURPOSES.
PARCELS SHOWN WITHOUT BEARING AND DISTANCES ARE FOR GRAPHICAL
PURPOSES AND ARE PENDING RECEIPT OF TITLE REPORT.

SHEET NO.	DESCRIPTION
SHEET 1	TITLE SHEET
SHEET 2-6	BOUNDARY MAP
SHEETS 7-11	TOPOGRAPHIC MAP

THE PURPOSE OF THE SURVEY IS TO PROVIDE A TOPOGRAPHIC MAP AND RIGHT OF WAY ESTABLISHMENT FOR THIS PORTIONS OF THE CRAWFORD CANYON ROAD AND NEWPORT AVENUE.

			COUNTY OF ORANGE OC PUBLIC WORKS OC SURVEY/FIELD SERVICES/BOUNDARY ANALYSIS & MAPPING				
			CRAWFORD CANYON ROAD SIDEWALK EXTENTION PHASE I				
			TITLE SHEET				
			PROJECT LIMITS: FROM NEWPORT BLVD. TO 100' N'ELY OF COUNTRY HAVEN LN. ALONG CRAWFORD CANYON ROAD AND FROM 140' N'ELY OF HYDE PARK DR. TO CRAWFORD CANYON RD. ALONG NEWPORT BLVD.				
			DATE OF SURVEY: 07/08/2020		BY: J. RUSSO & PARTY		SHEET NO. 1 of 11
			MAPPING		BY: H. AFTIM		
			OFFICE CHECK		BY: M. KUBISTY, PLS		
			FIELD CHECK		BY: J. RUSSO & PARTY		
			SCALE: N.T.S.		W.O. #EQ19817P		
			FILE: CRAWFORD CANYON ROAD, SIDEWALK EXTENTION, TOPO, 2020.DWG				
			REVISIONS				
MARK	DATE		ITEM				

U.S. *Survey Foot*

OC Public Works
OC Survey/Field Services
Boundary Analysis & Mapping

TOPOGRAPHIC MAPPING PROJECT

ESTABLISHMENT NOTES

- (A) ESTABLISHED THE CENTERLINE OF CRAWFORD CANYON ROAD BY HOLDING A LINE BETWEEN MONUMENTS [6] AND [9]
- (B) ESTABLISHED THE CENTERLINE OF NEWPORT BLVD. BY HOLDING RECORD ANGLES, DISTANCES & CURVATURE INFORMATION PER (R1) BETWEEN MONUMENTS [1], [2], [3], [4], [5], [6], [13] AND [14]
- (C) ESTABLISHED THE CENTERLINE INTERSECTION OF NEWPORT BLVD. AND OLD CRAWFORD ROAD BY HOLDING RECORD ANGLE, DISTANCE, AND CURVATURE INFORMATION NE'LY FROM MONUMENT [4] ALONG LINE ESTABLISHMENT (E)
- (D) ESTABLISHED THE CENTERLINE OF OLD CRAWFORD ROAD PER (R1) BY LEAST SQUARES ADJUSTMENT BETWEEN MONUMENT [11] AND ESTABLISHMENT NOTE (C)
- (E) ESTABLISHED THE CENTERLINE OF OLD CRAWFORD ROAD BY HOLDING A LINE BETWEEN MONUMENTS [10] AND [11]
- (F) ESTABLISHED THE PI OF CRAWFORD CANYON ROAD BY HOLDING RECORD DISTANCE SE'LY FROM MONUMENT [8] PER (R4).
- (G) ESTABLISHED THE CENTERLINE OF OLD CRAWFORD ROAD BY HOLDING A LINE BETWEEN MONUMENT [10] AND ESTABLISHMENT NOTE (F)
- (H) ESTABLISHED THE CENTERLINE OF OLD CRAWFORD ROAD BY HOLDING A RECORD RADIUS PER (R6) AND TANGENT TO ESTABLISHMENT NOTES (C) AND (E)
- (I) ESTABLISHED THE CENTERLINE OF OLD CRAWFORD ROAD BY HOLDING A RECORD RADIUS PER (R6) AND TANGENT TO ESTABLISHMENT NOTES (C) AND (A)
- (J) ESTABLISHED THE W'LY RIGHT OF WAY OF CRAWFORD CANYON ROAD. BY HOLDING RECORD DIMENSIONS PARALLEL WITH ESTABLISHMENT (A) PER (R14).
- (K) ESTABLISHED THE NW'LY RIGHT OF WAY OF OLD CRAWFORD ROAD. BY HOLDING RECORD DIMENSIONS PARALLEL WITH ESTABLISHMENT NOTES (I), (H), (E) AND (D) PER (R14).
- (L) ESTABLISHED THE SW'LY RIGHT OF WAY OF OLD CRAWFORD ROAD. BY HOLDING RECORD DIMENSIONS PARALLEL WITH ESTABLISHMENT NOTES (H), (E) AND (D) PER (R14).
- (M) ESTABLISHED BY HOLDING A RECORD DISTANCE PER (R20) SW'LY FROM MONUMENT [10] ALONG LINE ESTABLISHMENT (E)
- (N) ESTABLISHED THE POINT OF BEGINNING FOR THE COURSE DESCRIBED IN (R20) AS BEING THE INTERSECTION OF ESTABLISHMENT (X) WITH A LINE THAT IS PERPENDICULAR TO, & 30° NW'LY OF ESTABLISHMENT NOTE (M) PER (R20).
- (O) ESTABLISHED THE NW'LY POINT OF THE COURSE DESCRIBED IN (R20) BY HOLDING A RECORD DISTANCE SW'LY FROM BC ESTABLISHMENT NOTE (K) ALONG LINE ESTABLISHMENT NOTE (K) PER (R20).
- (P) ESTABLISHED THE N'LY RIGHT OF WAY OF NEWPORT BLVD. BY HOLDING RECORD DIMENSIONS PARALLEL WITH ESTABLISHMENT (B) PER (R20).
- (Q) ESTABLISHED THE SW'LY LINE OF THE COURSE DESCRIBED IN (R20) BY HOLDING A LINE BETWEEN ESTABLISHMENT NOTES (P) AND (O) RADIAL TO CURVE ESTABLISHMENT NOTE (P) PER (R20).
- (R) ESTABLISHED THE BC COURSE DESCRIBED IN (R20) BY HOLDING RECORD ANGLE, DISTANCE, AND CURVATURE INFORMATION PER (R20) SW'LY FROM BC ESTABLISHMENT NOTE (L)
- (S) ESTABLISHED THE N'LY RIGHT OF WAY OF NEWPORT BLVD. BY HOLDING RECORD DIMENSIONS PARALLEL WITH ESTABLISHMENT (A) PER (R1).
- (T) ESTABLISHED A PORTION OF THE COURSE DESCRIBED IN (R20) HOLDING RECORD ANGLE, DISTANCE, AND CURVATURE INFORMATION PER (R20) IN BETWEEN ESTABLISHMENT NOTES (R) AND (S)
- (U) ESTABLISHED THE SE'LY CORNER OF THE COURSE DESCRIBED IN (R19) BY HOLDING RECORD ANGLE, DISTANCE, AND CURVATURE INFORMATION PER (R5) NE'LY FROM THE INTERSECTION BETWEEN THE ESTABLISHMENT NOTES (P) AND (S) ALONG LINE ESTABLISHMENT NOTE (S)
- (V) ESTABLISHED THE SW'LY LINE OF PARCEL 3 DESCRIBED IN (R5) BY HOLDING A LINE BETWEEN MONUMENT [12] AND ESTABLISHMENT NOTE (U) PER (R5).
- (W) ESTABLISHED THE W'LY RIGHT OF WAY OF CRAWFORD CANYON RD. BY HOLDING RECORD DIMENSIONS PARALLEL WITH ESTABLISHMENT (A) PER (R1).
- (X) ESTABLISHED THE E'LY RIGHT OF WAY OF CRAWFORD CANYON RD. BY HOLDING RECORD DIMENSIONS PARALLEL WITH ESTABLISHMENT (A) PER (R1).
- (Y) ESTABLISHED THE SW'LY LINE OF LOT 1 DESCRIBED IN (R4) BY INTERSECTION BETWEEN ESTABLISHMENT NOTES (V) AND (X) PER (R4).
- (Z) ESTABLISHED A PORTION OF THE E'LY RIGHT OF WAY OF CRAWFORD CANYON RD. DEDICATED PER (R4) BY HOLDING RECORD DISTANCES NW'LY FROM ESTABLISHMENT (I) ALONG ESTABLISHMENT (X) PER (R4).
- (AA) ESTABLISHED THE SW'LY LINE OF PARCEL 1 PER (R8) BY HOLDING A LINE BETWEEN MONUMENT NOTES [22] AND [23]
- (AB) ESTABLISHED THE CENTERLINE OF CRAWFORD CANYON ROAD BY HOLDING A LINE NW'LY FROM MONUMENT [9] AND PARALLEL WITH & 30° SW'LY FROM LINE ESTABLISHMENT NOTE (AA)
- (AC) ESTABLISHED THE CENTERLINE OF CRAWFORD CANYON RD. BY HOLDING A RECORD RADIUS PER (R11) AND TANGENT TO ESTABLISHMENT NOTES (A) AND (AB)
- (AD) ESTABLISHED THE CENTERLINE OF COUNTRY HAVEN LN. BY HOLDING A LINE BETWEEN MONUMENT NOTES [25] AND [26]
- (AE) ESTABLISHED THE CENTERLINE OF COUNTRY HAVEN LN. BY HOLDING A LINE BETWEEN MONUMENT NOTES [24] AND [25]

ESTABLISHMENT NOTES

- (AF) ESTABLISHED THE CENTERLINE OF COUNTRY HAVEN LN. BY HOLDING A RECORD ANGLE NE'LY FROM MONUMENT 24 PER (R7).
- (AE) ESTABLISHED THE CENTERLINE OF COUNTRY HAVEN LN. BY HOLDING A RECORD RADIUS PER (R13) AND TANGENT TO ESTABLISHMENT NOTES AND (AF)
- (AI) ESTABLISHED THE CENTERLINE OF DANIGER RD. BY HOLDING A LINE BETWEEN MONUMENTS 27 AND 23
- (AI) S.F.N. ESTABLISHED THE CENTERLINE INTERSECTION OF CRAWFORD ROAD AND DANIGER RD. BY INTERSECTION HOLDING LINE ESTABLISHMENTS (AE) AND (AF)
- (AI) S.F.N. ESTABLISHED THE CENTERLINE INTERSECTION OF CRAWFORD ROAD AND COUNTRY HAVEN LN. BY INTERSECTION BETWEEN ESTABLISHMENT NOTES (AF) AND (AE)
- (AM) ESTABLISHED THE PI OF CRAWFORD CANYON ROAD BY HOLDING RECORD DISTANCE NW'LY FROM ESTABLISHMENT NOTE (AI) ALONG LINE ESTABLISHMENT NOTE (AE) PER (R12).
- (AL) ESTABLISHED THE CENTERLINE OF HINTON WAY BY HOLDING RECORD ANGLES, DISTANCES & CURVATURE INFORMATION PER (R16) BETWEEN MONUMENTS 30, 31, 32 AND 33
- (AM) ESTABLISHED THE CENTERLINE BC OF HINTON WAY BY HOLDING RECORD ANGLES, DISTANCES & CURVATURE INFORMATION PER (R16) NE'LY FROM MONUMENT 32 ALONG LINE ESTABLISHMENT NOTE (AL)
- (AM) ESTABLISHED THE CENTERLINE OF HINTON WAY BY HOLDING A RECORD DISTANCE PER (R16) AND TANGENT TO ESTABLISHMENT NOTE (AM)
- (AO) S.F.N. ESTABLISHED THE CENTERLINE INTERSECTION OF CRAWFORD CANYON ROAD AND HINTON WAY BY HOLDING A RECORD DISTANCE PER (R16) ALONG LINE ESTABLISHMENT NOTE (AM)
- (AF) S.F.N. ESTABLISHED A POINT ON CENTERLINE OF CRAWFORD CANYON RD. BY TIES PER (R29) FROM MONUMENTS 54, 53 AND 56
- (AL) ESTABLISHED THE CENTERLINE OF CRAWFORD CANYON ROAD BY HOLDING A LINE BETWEEN ESTABLISHMENT NOTES (AO) AND (AF)
- (AF) ESTABLISHED THE CENTERLINE PI OF CRAWFORD CANYON ROAD BY PROLONGATION LINE ESTABLISHMENT (AO) HOLDING A RECORD DISTANCE SE'LY FROM ESTABLISHMENT NOTE (AE)
- (AS) ESTABLISHED THE CENTERLINE OF CRAWFORD CANYON ROAD BY HOLDING A LINE BETWEEN ESTABLISHMENT NOTES (AM) AND (AF)
- (AI) ESTABLISHED THE SW'LY RIGHT OF WAY OF CRAWFORD CANYON RD. BY HOLDING RECORD DIMENSIONS PARALLEL WITH ESTABLISHMENT (AE) PER (R14).
- (AL) ESTABLISHED THE NE'LY RIGHT OF WAY OF CRAWFORD CANYON RD. BY HOLDING RECORD DIMENSIONS PARALLEL WITH ESTABLISHMENT (AE) PER (R11).
- (AV) ESTABLISHED THE NE'LY ULTIMATE RIGHT OF WAY OF CRAWFORD CANYON RD. AS SHOWN PER (R8) BY HOLDING RECORD DIMENSIONS PARALLEL WITH ESTABLISHMENT (AE) PER (R8).
- (AM) ESTABLISHED THE SE'LY RIGHT OF WAY OF COUNTRY HAVEN LN. BY HOLDING RECORD DIMENSIONS PARALLEL WITH ESTABLISHMENT NOTES (AO), (AE) AND (AF) PER (R13).
- (AV) ESTABLISHED THE NW'LY RIGHT OF WAY OF DANIGER RD. BY HOLDING RECORD DIMENSIONS PARALLEL WITH ESTABLISHMENT (AI) PER (R11).
- (AY) ESTABLISHED THE SE'LY RIGHT OF WAY OF DANIGER RD. BY HOLDING RECORD DIMENSIONS PARALLEL WITH ESTABLISHMENT (AI) PER (R11).
- (AZ) ESTABLISHED THE SW'LY RIGHT OF WAY OF CRAWFORD CANYON RD. BY HOLDING RECORD DIMENSIONS PARALLEL WITH ESTABLISHMENT (AS) PER (R14).
- (BA) ESTABLISHED THE NW'LY RIGHT OF WAY OF COUNTRY HAVEN LN. BY HOLDING RECORD DIMENSIONS PARALLEL WITH ESTABLISHMENT NOTES (AF), (AO) AND (AE) PER (R13).
- (EB) ESTABLISHED THE NW'LY RIGHT OF WAY OF COUNTRY HAVEN LN. BY HOLDING RECORD ANGLES, DISTANCES & CURVATURE INFORMATION PER (R13) NW'LY FROM ESTABLISHMENT NOTE (EA)
- (EC) ESTABLISHED THE INTERSECTION BETWEEN THE SE'LY LINE OF LOT 13 DESCRIBED IN (R25) AND THE CENTERLINE OF CRAWFORD CANYON RD. BY HOLDING A RECORD DISTANCE PER (R25) SE'LY FROM ESTABLISHMENT NOTE (AI) ALONG LINE ESTABLISHMENT NOTE (AE)
- (ED) ESTABLISHED THE SE'LY LINE OF LOT 13 DESCRIBED IN (R25) BY HOLDING A LINE BETWEEN ESTABLISHMENT NOTES (ED) AND (EB)
- (EE) ESTABLISHED PARCEL 2 DESCRIBED IN (R31). BY HOLDING RECORD DIMENSIONS PARALLEL WITH ESTABLISHMENTS (AE), (AO), (I), (H) AND (E) PER (R31).
- (EF) ESTABLISHED THE INTERSECTION OF LINE ESTABLISHMENT (AE) AND THE N'LY PROLONGATION OF LINE ESTABLISHMENT (AY) BY INTERSECTION.
- (EC) ESTABLISHED THE INTERSECTION BETWEEN THE NE'LY LINE OF PARCEL 1 DESCRIBED IN (R12) AND THE CENTERLINE OF CRAWFORD CANYON RD. BY HOLDING A RECORD DISTANCE PER (R12) SE'LY FROM ESTABLISHMENT NOTE (AI) ALONG LINE ESTABLISHMENT NOTE (AE)
- (EH) ESTABLISHED THE SW'LY CORNER OF PARCEL 1 PER (R12) BY HOLDING A RECORD DISTANCE SW'LY FROM ESTABLISHMENT NOTE (EF) AND PARALLEL WITH ESTABLISHMENT NOTE (AI)
- (EI) ESTABLISHED THE SE'LY CORNER OF PARCEL 1 PER (R12) BY HOLDING A RECORD DISTANCE SW'LY FROM ESTABLISHMENT NOTE (EC) AND A RECORD DISTANCE SE'LY FROM ESTABLISHMENT NOTE (EH)
- (EU) ESTABLISHED THE SE'LY LINE OF PARCEL 1 PER (R12) BY HOLDING A RECORD DISTANCE ALONG THE LINE BETWEEN ESTABLISHMENT NOTES (EC) AND (EI)

ESTABLISHMENT NOTES

- 6X ESTABLISHED THE NE'LY OF PARCEL 1 PER (R12) BY HOLDING A RECORD RADIUS PER (R11) AND TANGENT TO ESTABLISHMENT NOTES 6E AND 6J.
 6L ESTABLISHED THE NE'LY OF PARCEL 1 PER (R12) BY HOLDING A LINE PARALLEL WITH ESTABLISHMENT NOTE 4F, NE'LY FROM BC ESTABLISHMENT NOTE 6K.
 6M ESTABLISHED THE SW'LY RIGHT OF WAY OF CRAWFORD CANYON RD. BY HOLDING RECORD DIMENSIONS PARALLEL WITH ESTABLISHMENT 4G PER (R12).
 6N ESTABLISHED THE SW'LY RIGHT OF WAY OF CRAWFORD CANYON RD. BY HOLDING RECORD DIMENSIONS PARALLEL WITH ESTABLISHMENT 4S PER (R14).
 6O ESTABLISHED THE INTERSECTION BETWEEN THE NW'LY LINE OF 40' EASEMENT DESCRIBED IN (R33) AND THE CENTERLINE OF CRAWFORD CANYON RD. BY HOLDING A RECORD DISTANCE PER (R32) SE'LY FROM ESTABLISHMENT NOTE 6F ALONG LINE ESTABLISHMENT NOTE 4G.
 6P ESTABLISHED THE NW'LY LINE OF 40' EASEMENT DESCRIBED IN (R33) BY HOLDING A RECORD DISTANCE PER (R32) PARALLEL WITH ESTABLISHMENT NOTE 4F SW'LY FROM ESTABLISHMENT NOTE 6O.
 6Q ESTABLISHED THE INTERSECTION BETWEEN THE NEW AND OLD CENTERLINES OF NEWPORT BLVD. BY HOLDING RECORD ANGLE, DISTANCE, AND CURVATURE INFORMATION NE'LY FROM EC ESTABLISHMENT NOTE 4C.
 6R ESTABLISHED THE NEW CENTERLINE OF NEWPORT BLVD. BY HOLDING A RECORD ANGLE, DISTANCE, AND CURVATURE INFORMATION SW'LY FROM EC ESTABLISHMENT NOTE 6M IN BETWEEN EC ESTABLISHMENT NOTE 4M AND MONUMENT 1.
 6S ESTABLISHED PARCEL 156.1 PER (R36), PARCEL 157.1 PER (R37) AND PARCEL 158.1 PER (R38). BY HOLDING RECORD DIMENSIONS PARALLEL WITH ESTABLISHMENT 6K PER (R1).
 6T ESTABLISHED PARCEL 159.1 PER (R39) BY HOLDING RECORD ANGLES, DISTANCES & CURVATURE INFORMATION PER (R1) TO THE INTERSECTION WITH LINE ESTABLISHMENT 6J.
 6U ESTABLISHED THE SE'LY CORNER OF PARCEL 15 PER (R3) BY HOLDING THE INTERSECTION BETWEEN LINE ESTABLISHMENTS 4S AND 4K.
 6V ESTABLISHED THE NE'LY CORNER OF PARCEL 15 PER (R3) BY HOLDING RECORD ANGLES, DISTANCES & CURVATURE INFORMATION PER (R1) NE'LY FROM ESTABLISHMENT NOTE 6L ALONG ESTABLISHMENT NOTE 4K.
 6W ESTABLISHED THE CENTERLINE OF MARCY RANCH DR. BY HOLDING A LINE BETWEEN MONUMENTS 58 AND 59.
 6X ESTABLISHED THE CENTERLINE OF MARCY RANCH DR. BY HOLDING RECORD ANGLES, DISTANCES & CURVATURE INFORMATION PER (R1) NE'LY FROM BC ESTABLISHMENT NOTE 6W.
 6Y ESTABLISHED THE SE'LY RIGHT OF WAY OF MARCY RANCH DR. BY HOLDING RECORD DIMENSIONS PARALLEL WITH ESTABLISHMENT 6X PER (R3).
 6Z ESTABLISHED THE N'LY LINE OF PARCEL 15 PER (R3) BY HOLDING A LINE BETWEEN ESTABLISHMENT NOTE 6V AND MONUMENT 4O.

MONUMENT NOTES

- [1] FOUND 2 1/2" PUNCHED BRASS DISK STAMPED "OCS", PER (R1), DOWN 0.8' IN O.C.S. WELL MONUMENT, ACCEPTED AS A CENTERLINE EC OF NEWPORT BLVD.
- [2] FOUND 2" PUNCHED BRASS DISK STAMPED "OCS", PER (R1), DOWN 0.8' IN O.C.S. WELL MONUMENT, ACCEPTED AS CENTERLINE BC OF NEWPORT BLVD.
- [3] FOUND 2" PUNCHED BRASS DISK STAMPED "OCS", PER (R1), DOWN 0.8' IN O.C.S. WELL MONUMENT, ACCEPTED AS CENTERLINE PCC OF NEWPORT BLVD.
- [4] FOUND 2" PUNCHED BRASS DISK STAMPED "OCS", PER (R1), DOWN 0.5' IN O.C.S. WELL MONUMENT, ACCEPTED AS CENTERLINE EC OF NEWPORT BLVD.
- [5] FOUND PUNCHED SPIKE AND 1 1/4" BRASS TAG STAMPED "OCS", PER (R1), FLUSH IN AC, ACCEPTED AS CENTERLINE PCC OF NEWPORT BLVD.
- [6] FOUND 2" PUNCHED BRASS DISK STAMPED "OCS", PER (R1), DOWN 0.8' IN O.C.S. WELL MONUMENT, ACCEPTED AS THE CENTERLINE INTERSECTION OF NEWPORT BLVD. AND CRAWFORD CANYON RD.
- [7] FOUND PUNCHED SPIKE AND 1 1/2" WASHER STAMPED "RCE 15446", PER (R4), DOWN 0.2' IN AC, ACCEPTED AS A POINT ON CENTERLINE OF CRAWFORD CANYON RD.
- [8] FOUND PUNCHED SPIKE AND 1 1/2" WASHER STAMPED "RCE 15446", PER (R4), DOWN 0.2' IN AC, ACCEPTED AS A POINT ON CENTERLINE OF CRAWFORD CANYON RD.
- [9] FOUND 2 1/4" BRASS DISK STAMPED 'RCE 20106', PER (R1), DOWN 1.9' IN O.C.S. WELL MONUMENT, ACCEPTED AS A PI CENTERLINE OF CRAWFORD CANYON RD.
- [10] FOUND 3/4" IRON PIPE, NAIL AND WASHER, PER (R6), DOWN 1.6' IN AC, ACCEPTED AS A PI CENTERLINE OF OLD CRAWFORD RD.
- [11] FOUND 3/4" IRON PIPE, NAIL AND WASHER, PER (R6), DOWN 2.3' IN AC, ACCEPTED AS A PI CENTERLINE OF OLD CRAWFORD RD.
- [12] FOUND 1" IRON PIPE AND PLASTIC PLUG, PER (R1), DOWN 0.6' IN DIRT, ACCEPTED AS THE SW'LY CORNER OF LOT 1 PER (R4).
- [13] FOUND 2" PUNCHED BRASS DISK STAMPED "OCS", PER (R1), DOWN 0.5' IN O.C.S. WELL MONUMENT, ACCEPTED AS CENTERLINE EC OF NEWPORT BLVD.
- [14] FOUND 2" PUNCHED BRASS DISK STAMPED "OCS", PER (R1), DOWN 0.5' IN O.C.S. WELL MONUMENT, ACCEPTED AS A POINT ON CENTERLINE OF NEWPORT BLVD.
- [15] FOUND 1" IRON PIPE AND PLASTIC CAP STAMPED "15446", PER (R4), DOWN 0.65' IN DIRT, S85°28'17"W 0.06' FROM ANGLE POINT E'LY RIGHT OF WAY OF CRAWFORD RD.
- [16] FOUND 3/4" IRON PIPE, LEAD, TACK AND TAG STAMPED "15446", PER (R4), FLUSH IN AC, S63°09'30"W 0.06' FROM W'LY RIGHT OF WAY OF CRAWFORD RD.
- [17] FOUND 1" IRON PIPE AND PLASTIC CAP STAMPED "15446", PER (R4), DOWN 0.25' IN DIRT, S30°38'55"W 0.10' FROM E'LY RIGHT OF WAY OF CRAWFORD RD.
- [18] FOUND 1" IRON PIPE AND 3/4" BRASS TAG STAMPED "14814", PER (R3), DOWN 0.30' IN DIRT, S62°52'53"E 0.32' FROM W'LY RIGHT OF WAY OF OLD CRAWFORD RD.
- [19] FOUND 1" IRON PIPE AND 3/4" BRASS TAG STAMPED "14814", PER (R3), DOWN 0.30' IN DIRT, S44°25'06"E 0.44' FROM W'LY RIGHT OF WAY OF OLD CRAWFORD RD.
- [20] FOUND 1" IRON PIPE AND 3/4" BRASS TAG ILLEGIBALE, PER (R3), DOWN 0.30' IN DIRT, S69°44'21"E 0.38' FROM W'LY RIGHT OF WAY OF OLD CRAWFORD RD.
- [21] FOUND 1" IRON PIPE AND 3/4" BRASS TAG STAMPED "1481...", PER (R3), DOWN 0.30' IN DIRT, S69°44'21"E 0.36' FROM W'LY RIGHT OF WAY OF OLD CRAWFORD RD.
- [22] FOUND 1" IRON PIPE, TACK AND TAG STAMPED "2210", PER (R23), DOWN 0.5' IN DIRT, ACCEPTED AS THE SE'LY PROPERTY CORNER OF PARCEL 2 AND THE NE'LY RIGHT OF WAY OF CRAWFORD CANYON RD. PER (R8).
- [23] FOUND 1" IRON PIPE, TACK AND TAG STAMPED "RCE 12971", PER (R8), DOWN 1.9 IN DIRT, ACCEPTED AS A PI NE'LY RIGHT OF WAY OF CRAWFORD CANYON RD. PER (R8).
- [24] FOUND PK. NAIL, PER (R26 & R27), FLUSH IN AC, ACCEPTED AS CENTERLINE PI OF COUNTRY HAVEN LN.
- [25] FOUND PK. NAIL, PER (R26 & R27), DOWN 0.05' IN AC, ACCEPTED AS CENTERLINE PI OF COUNTRY HAVEN LN.
- [26] FOUND 1 1/2" HOLLOW IRON PIPE, FLUSH IN AC, ACCEPTED AS A POINT ON CENTERLINE OF COUNTRY HAVEN LN.
- [27] FOUND 2" PUNCHED BRASS DISK STAMPED "RCE20106", PER (R11), DOWN 2.1' IN O.C.S. WELL MONUMENT, ACCEPTED AS THE CENTERLINE INTERSECTION OF DANGER RD. AND CORALWOOD DR.
- [28] FOUND 2" PUNCHED BRASS DISK STAMPED "RCE20106", PER (R11), DOWN 2.1' IN O.C.S. WELL MONUMENT, ACCEPTED AS THE CENTERLINE INTERSECTION OF DANGER RD. AND HIGHCREST ST.
- [29] FOUND GEAR SPIKE AND 1 3/4" WASHER STAMPED "LS7177", PER (R22), DOWN 0.25' IN AC, ACCEPTED AS A POINT ON CENTERLINE OF DANGER RD.
- [30] FOUND SPIKE AND 1 1/2" WASHER STAMPED "LS 3120", PER (R16), DOWN 0.25' IN AC, ACCEPTED AS THE CENTERLINE BC OF HINTON WAY.
- [31] FOUND SPIKE AND 1 1/2" WASHER STAMPED "LS 3120", PER (R16), DOWN 0.25' IN AC, ACCEPTED AS THE CENTERLINE EC OF HINTON WAY.
- [32] FOUND SPIKE AND 1 1/2" WASHER STAMPED "LS 3120", PER (R16), DOWN 0.25' IN AC, ACCEPTED AS THE CENTERLINE BC OF HINTON WAY.
- [33] FOUND SPIKE AND 1 1/2" WASHER STAMPED "LS 3120", PER (R16), DOWN 0.25' IN AC, N34°13'52"W 0.07' FROM CENTERLINE EC OF HINTON WAY.
- [34] FOUND 2" IRON PIPE AND PLASTIC CAP STAMPED "RCE28918", PER (R25), DOWN 0.5' IN DIRT, ACCEPTED AS A TIE PER (29).
- [35] FOUND PK NAIL W/TAG, STAMPED "O.C.S. TIE", FLUSH IN CONCRETE CURB, ACCEPTED AS A TIE PER (R29)
- [36] FOUND PK NAIL W/TAG, STAMPED "O.C.S. TIE", FLUSH IN CONCRETE CURB, ACCEPTED AS A TIE PER (R29)
- [37] FOUND 3/4" IRON PIPE, AND NAIL, NO REFERENCE, DOWN 2' IN AC, NOT ACCEPTED AS A PI CENTERLINE OF OLD CRAWFORD RD.

MONUMENT NOTES

- 38 FOUND 3 1/2" PUNCHED ALUMINUM CAP STAMPED "RCE 14814", PER (R3), DOWN 1.6' IN O.C.S. WELL MONUMENT, ACCEPTED AS THE CENTERLINE INTERSECTION OF MARCY DR. AND MARCY RANCH RD.
- 39 FOUND 3 1/2" PUNCHED ALUMINUM CAP STAMPED "RCE 14814", PER (R3), DOWN 1.6' IN O.C.S. WELL MONUMENT, ACCEPTED AS THE CENTERLINE EC OF MARCY RANCH RD.
- 40 FOUND 3/4" LEAD, TACK AND TAG STAMPED "RCE 14814" PER (R3), FLUSH IN CONCRETE, ACCEPTED AS THE NW 1/4 CORNER OF LOT 16 PER (R1) AND THE E 1/4 RIGHT OF WAY OF MARCY RANCH ROAD.

COUNTY OF ORANGE OC PUBLIC WORKS OC SURVEY/FIELD SERVICES/BOUNDARY ANALYSIS & MAPPING	
<h1 style="margin: 0;">CRAWFORD CANYON ROAD</h1> <h2 style="margin: 0;">SIDEWALK EXTENTION PHASE I</h2>	
BOUNDARY MAP	
PROJECT LIMITS: FROM NEWPORT BLVD. TO 100' NE'LY OF COUNTRY HAVEN LN. ALONG CRAWFORD CANYON ROAD AND FROM 140' NE'LY OF HYDE PARK DR. TO CRAWFORD CANYON RD. ALONG NEWPORT BLVD.	
DATE OF SURVEY: 07/08/2020 MAPPING OFFICE CHECK FIELD CHECK SCALE: 1"=50' W.O. #EQ19817P	BY: J. RUSSO & PARTY BY: H. AFTIM BY: M. KUBISTY, PLS BY: J. RUSSO & PARTY FILE #1920VP-IN0029
FILE: CRAWFORD CANYON ROAD_SIDEWALK EXTENTION_BOUNDARY_2020.DWG	
SHEET NO. 2 of 11	

LINE TABLE			
LINE #	BEARING	MEASURED DISTANCE	RECORD DISTANCE
L1	N42°32'57"E	29.24'	(29.25' R1)
L2	N67°28'06"W	347.94'	(M&R R1)
L3	N16°34'34"W	121.54'	(121.74' R2)
L4	N16°34'34"W	370.36'	(369.94' R4)
L5	N16°34'32"W	17.37'	— — — —
L6	N16°34'34"W	74.30'	— — — —
L7	N16°33'53"W	91.67'	(91.69' R4)
L8	N16°34'34"W	254.67'	— — — —
L9	S16°34'34"E	54.50'	— — — —
L10	S16°34'31"E	309.16'	(309.14' R4)
L11	N06°50'13"E	103.67'	(103.66' R5)
L12	N06°50'13"E	71.80'	(71.79' R5)
L13	S06°50'13"W	175.48'	(175.45' CR20)
L14	S46°54'40"W	71.80'	(71.79' R5)
L15	S46°54'40"W	65.94'	(M&R R20)
L16	S46°54'40"W	356.45'	(356.58' R20)
L17	S46°54'40"W	422.39'	(422.54' R1)
L18	S46°54'40"W	77.30'	(77.15' R6)
L19	S20°15'39"W	77.30'	(77.15' R6)
L20	N20°15'39"E	75.24'	— — — —

LINE TABLE			
LINE #	BEARING	MEASURED DISTANCE	RECORD DISTANCE
L21	N20°15'39"E	129.49'	— — — —
L22	N20°15'39"E	66.03'	(66.57' R3)
L23	N20°15'38"E	204.73'	(204.38' R3)
L24	N05°30'19"E	66.03'	(66.57' R3)
L25	N05°30'19"E	93.65'	(93.01' CR1)
L26	S05°30'34"W	159.67'	(159.58' CR1)
L27	N20°15'39"E	62.81'	(M&R R20)
L28	N47°13'58"W	43.00'	— — — —
L29	S47°14'02"E	75.47'	(75.16' R20)
L30	S30°25'56"W	43.44'	(44.52' R5)
L31	S30°25'56"W	13.67'	(13.60' R5)
L32	S30°25'56"W	41.01'	(40.80' R5)
L33	S30°25'56"W	54.69'	(54.47' R1)
L34	N30°25'56"E	109.37'	(108.82' R5)
L35	N16°34'34"W	892.73'	(892.76' R1)
L36	S16°34'34"E	272.47'	(272.55' R5)
L37	S46°54'40"W	65.94'	(M&R R20)
L38	S46°54'40"W	356.45'	(356.58' R20)
L39	N48°54'56"E	54.56'	(M&R R1&R19)
L40	N55°42'56"E	58.50'	(M&R R1&R19)

LINE TABLE			
LINE #	BEARING	MEASURED DISTANCE	RECORD DISTANCE
L41	N63°38'56"E	103.35'	(M&R R1)
L42	N61°35'56"E	105.35'	(M&R R1)
L43	N71°29'56"E	108.50'	(M&R R1)
L44	N67°34'56"E	32.00'	(M&R R1)
L45	N26°25'22"E	18.85'	(16.94' R1)
L46	S05°15'58"E	101.98'	(M&R R18)
L47	S16°34'34"E	50.00'	(M&R R18)
L48	S38°22'46"E	53.85'	(M&R R18)
L49	S31°09'08"E	33.88'	(33.90' R18)
L50	N16°34'31"W	249.93'	(250.96' R1)
L51	S47°03'46"E	54.50'	(54.49' R11)
L52	S47°03'46"E	197.98'	(198.03' R11)
L53	N72°36°40"W	23.19'	(23.29 R13)
L54	S47°03'46"E	252.48'	(252.52' R11)
L55	N47°03'46"W	170.35'	(170.14" R12)
L56	N47°03'46"W	64.09'	(64.31' R12)
L57	N28°13'26"W	72.93'	(M&R R10)
L58	N28°13'26"W	70.29'	(67.40' R16)
L59	N28°13'23"W	143.21'	(143.42' R16)
L60	N61°55'20"E	67.00'	(M&R R16)

LINE TABLE			
LINE #	BEARING	MEASURED DISTANCE	RECORD DISTANCE
L61	N47°51'12"E	31.25'	(M&R R16)
L62	N47°03'46"W	214.02'	(213.68' R8)
L63	N35°54'41"E	106.37'	(106.35' R13)
L64	N35°54'41"E	38.16'	(M&R R13)
L65	S35°54'41"W	144.52'	(144.51' R13)
L66	S72°34'59"E	38.16'	(M&R R13)
L67	S72°34'59"E	69.43'	(69.39' R13)
L68	N72°34'59"W	107.59'	(107.55' R13)
L69	N47°03'44"W	26.89'	(M&R R13)
L70	S35°42'25"W	393.78'	(393.90' R11)
L71	S35°42'25"W	657.21'	(657.50' R11)
L72	S35°42'25"W	355.68'	(355.72' CR11)
L73	S35°42'25"W	1406.67'	(1407.12' CR11)
L74	S17°27'53"W	19.58'	(19.59' R1)
L75	N47°03'46"W	28.21'	(M&R R12)
L76	N47°03'46"W	8.07'	(M&R R12)
L77	N35°54'41"E	10.08'	(10.07' R12)
L78	N35°54'41"E	10.08'	(M&R R12)
L79	S35°54'45"W	20.16'	(20.15' R12)
L80	S35°59'15"W	45.75'	(45.74 R12)

LINE TABLE			
LINE #	BEARING	MEASURED DISTANCE	RECORD DISTANCE
L81	S16°34'34"E	89.85'	(89.59' R9)
L82	S16°34'34"E	304.83'	(M&R R4)
L83	N13°59'12"E	23.00'	(M&R R4)
L84	N02°08'50"W	24.69'	(M&R R4)
L85	N01°01'49"W	25.38'	(M&R R4)
L86	N63°13'18"W	33.90'	(M&R R4)
L87	S16°34'34"E	28.47'	(28.68' R4)
L88	N35°54'41"E	47.41'	(47.32' R13)
L89	N72°36°40"W	69.56'	(69.87' R25)
L90	S35°54'41"W	40.30'	(40.29' CR12)
L91	S35°59'15"W	90.36'	(90.37' CR12)
L92	S47°03'46"E	11.40'	(M&R R25)
L93	S47°03'46"E	275.00'	(M&R R32)
L94	N27°55'34"E	199.99'	(M&R R1)
L95	N27°55'34"E	123.92'	(192.07' CR1)
L96	N27°55'34"E	144.88'	(144.91' CR1)
L97	N39°11'28"E	37.77'	(M&R R38)
L98	N05°30'19"E	31.30'	(M&R R1)
L99	S10°56'00"W	24.33'	(22.75' R38)
L100	S71°34'58"E	4.21'	(4.21' R38)

LINE TABLE			
LINE #	BEARING	MEASURED DISTANCE	RECORD DISTANCE
L101	N42°53'45"E	31.93'	(31.92' R29)
L102	N87°12'34"W	22.84'	(M&R R29)
L103	S29°30'11"W	22.85'	(M&R R29)
L104	S47°03'44"E	234.44'	(234'.41 R10)
L105	S35°54'44"W	254.88'	(M&R R32)

REFERENCES

- (R1) = RECORD OF SURVEY RSB 194/1–16
- (R2) = TRACT NO. 8489, M.M. 671/9–11
- (R3) = TRACT NO. 10570, M.M. 464/32–35
- (R4) = TRACT NO. 11497, M.M. 537/34–39
- (R5) = PARCEL MAP P.M.B. 132/46–49
- (R6) = SM 71–7B
- (R7) = TRACT NO. 4130, M.M. 180/32–33
- (R8) = PARCEL MAP P.M.B. 39/25
- (R9) = PARCEL MAP P.M.B. 98/11
- (R10) = CSTB 138/47–52
- (R11) = TRACT NO. 7723, M.M. 335/48–50
- (R12) = PARCEL MAP P.M.B. 356/8–12
- (R13) = TRACT NO. 4130, M.M. 180/32–33
- (R14) = TRACT NO. 732, M.M. 31/37–38
- (R15) = CORNER RECORD, C.R. 2019–1907
- (R16) = TRACT NO. 6208, M.M. 378/1–2
- (R17) = RECORD OF SURVEY RSB 114/28
- (R18) = O.R. 13486/1458
- (R19) = O.R. 94–0389373
- (R20) = O.R. 1996–0346961
- (R21) = O.C.S. ALIGNMENT NOTE A/NE/IRV, PG. 1213–1220
- (R22) = CORNER RECORD, C.R. 2012–2280
- (R23) = RECORD OF SURVEY RSB 20/11
- (R24) = PARCEL MAP P.M.B. 103/7–8
- (R25) = RECORD OF SURVEY RSB 233/28
- (R26) = O.C.S. ALIGNMENT NOTE A/4–9/2235–2247
- (R27) = O.C.S. ALIGNMENT NOTE A/4–9/547–553
- (R28) = O.C.S. ALIGNMENT NOTE A/4–9/979–992
- (R29) = CORNER RECORD, C.R. 2010–0786
- (R30) = O.R. 2011–603896
- (R31) = O.R. 2658–580
- (R32) = PARCEL MAP P.M.B. 30/38–39
- (R33) = O.R. 9068/750
- (R34) = RECORD OF SURVEY RSB 152/21–26
- (R35) = TRACT NO. 3556, M.M. 374/33–34
- (R36) = O.R. 91–105258
- (R37) = O.R. 94–0322838
- (R38) = O.R. 91–238100
- (R39) = O.R. 91–670385

CURVE TABLE						
CURVE #	DELTA	RADIUS	LENGTH	RECORD DELTA	RECORD RADIUS	RECORD LENGTH
C1	1°50'34"	999.97'	32.16'	(1°50'33" R1)	(1000.00' R1)	(M&R R1)
C2	23°24'47"	500.32'	204.45'	(23°24'35" R5)	(500.34' R5)	(204.43' R5)
C3	40°04'27"	196.88'	137.70'	(40°04'34" R6)	(196.89' R6)	(137.72' R6)
C4	26°39'01"	326.37'	151.81'	(26°35'56" R5)	(326.38' R5)	(151.52' R5)
C5	14°45'20"	509.98'	131.34'	(14°52'26" R3)	(510.00' R3)	(132.39' R3)
C6	26°39'01"	356.37'	165.76'	(26°35'50" R20)	(356.38' R20)	(165.43' R20)
C7	7°18'35"	1079.97'	137.78'	(07°19'00" R20)	(1080.00' R20)	(137.91' R20)
C8	16°56'59"	50.00'	14.79'	— — —	— — —	— — —
C9	3°38'34"	579.98'	36.87'	(3°37'20" R1)	(580.00' R1)	(36.67' R1)
C10	22°38'19"	1049.97'	414.86'	(22°36'30" R1)	(1050.00' R1)	(414.32' R1)
C11	26°46'10"	226.88'	106.00'	(26°45'39" R5)	(226.85' R5)	(105.95' R5)
C12	7°20'42"	296.37'	37.99'	(7°20'35" R5)	(296.38' R5)	(37.98' R5)
C13	116°51'29"	50.00'	101.97'	(115°37'22" R20)	(M&R R20)	(100.90' R20)
C14	6°40'24"	50.00'	5.82'	(06°44'57" R19)	(M&R R19)	(5.89' R19)
C15	13°17'51"	241.88'	56.14'	(13°45'22" R18)	(241.89' R18)	(58.08' R18)
C16	30°29'12"	199.99'	106.41'	(30°28'53" R11)	(200.00' R11)	(106.40' R11)
C17	71°30'20"	53.00'	66.14'	(M&R R13)	(M&R R13)	(M&R R13)
C18	13°59'57"	150.00'	36.65'	(14°00'00" R16)	(M&R R16)	(M&R R16)
C19	6°42'58"	150.00'	17.58'	(6°42'17" R16)	(M&R R16)	(17.55' R16)
C20	83°02'59"	45.16'	65.46'	(83°04'00" R12)	(M&R R12)	(65.47' R12)

CURVE TABLE						
CURVE #	DELTA	RADIUS	LENGTH	RECORD DELTA	RECORD RADIUS	RECORD LENGTH
C21	81°05'09"	27.00'	38.21'	(81°04'56" R9)	(M&R R9)	(M&R R9)
C22	71°30'20"	25.00'	31.20'	(71°30'20" R13)	(M&R R13)	(M&R R13)
C23	82°58'25"	25.00'	36.20'	(83°03'55" R13)	(M&R R13)	(36.24' R13)
C24	14°29'22"	1049.97'	265.53'	(14°29'22" R9)	(1050.00' R9)	(265.53' R9)
C25	3°04'57"	999.97'	53.80'	(3°04'57" R34)	(1000.00' R34)	(53.80' R34)
C26	14°37'27"	999.97'	255.23'	(14°37'27" R34)	(1000.00' R34)	(255.24' R34)
C27	14°37'27"	949.97'	242.47'	- - - -	- - - -	- - - -
C28	14°37'27"	939.97'	239.92'	- - - -	- - - -	- - - -
C29	10°06'31"	189.99'	33.52'	(10°06'25" R38)	(190.00' R38)	(M&R R38)
C30	1°47'40"	539.98'	16.91'	(01°47'37" R1)	(540.00' R1)	(16.91' R1)
C31	28°04'50"	999.97'	490.09'	- - - -	- - - -	- - - -
C32	28°04'49"	999.97'	490.08'	- - - -	- - - -	- - - -

EASEMENT NOTES

- ① O.R. 2011–603896 GRANT DEED TO ORANGE COUNTY DATED 11/29/2011
- ② RIGHT OF WAY FOR SLOPE PURPOSES PER INST. 13486/1458 O.R.
- ③ RIGHT OF WAY FOR SLOPE & DRAINAGE PURPOSES PER INST. 94–0389373 O.R.
- ④ PARCEL 2 OF GRANT DEED A 20.00' WIDE EASEMENT FOR ROAD PURPOSES RECORDED JANUARY 28, 1954 IN BOOK 2658, PAGE 580.
- ⑤ 10.00' WIDE EASEMENT FOR ROAD PURPOSES RECORDED JULY 26, 1945 IN BOOK 1318, PAGE 525.
- ⑥ DEANE DEVELOPMENT CO., AND THE COUNTY OF ORANGE HOLDERS A 20.00' WIDE EASEMENT FOR UNDERGROUND SEWER, DRAINAGE, WATER AMD PUBLIC UTILITIES RECORDED JULY 3, 1979 IN BOOK 13215, PAGE 531.

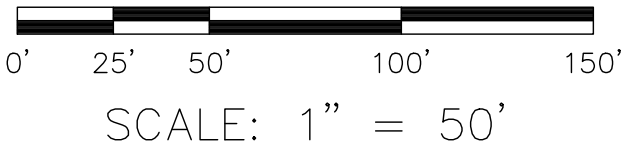
MARK	DATE	ITEM	COUNTY OF ORANGE OC PUBLIC WORKS OC SURVEY/FIELD SERVICES/BOUNDARY ANALYSIS & MAPPING				
			CRAWFORD CANYON ROAD SIDEWALK EXTENTION PHASE I				
			BOUNDARY MAP				
			PROJECT LIMITS: FROM NEWPORT BLVD. TO 100' NE'LY OF COUNTRY HAVEN LN. ALONG CRAWFORD CANYON ROAD AND FROM 140' NE'LY OF HYDE PARK DR. TO CRAWFORD CANYON RD. ALONG NEWPORT BLVD.				
			DATE OF SURVEY: 07/08/2020		BY: J. RUSSO & PARTY		SHEET NO. 3 of 11
			MAPPING		BY: H. AFTIM		
			OFFICE CHECK		BY: M. KUBISTY, PLS		
			FIELD CHECK		BY: J. RUSSO & PARTY		
			SCALE: 1"=50'		W.O. #E019817P		
REVISIONS				FILE: CRAWFORD CANYON ROAD_SIDEWALK EXTENTION_BOUNDARY_2020.DWG			

NOTES

STREET R/W SHOWN IN BOLD ESTABLISHED BY THIS SURVEY.
THE LOT LINES ARE FOR GRAPHICAL PRESENTATION ONLY.
RECORD DISTANCES SHOWN HERON ARE AS THEY APPEAR ON THE
DOCUMENT OF RECORD. DISTANCES MAY BE EITHER GRID OR GROUND,
AS PER SAID RECORD.
REFERENCE DOCUMENTS IN THE REFERENCE LEGEND ARE LIVE
HYPERLINKS TO SAID DOCUMENT.
MONUMENT SYMBOLS CONTAIN LIVE HYPERLINKS TO IMAGES, IF THEY
EXIST, OF RESPECTIVE MONUMENT.

LEGEND

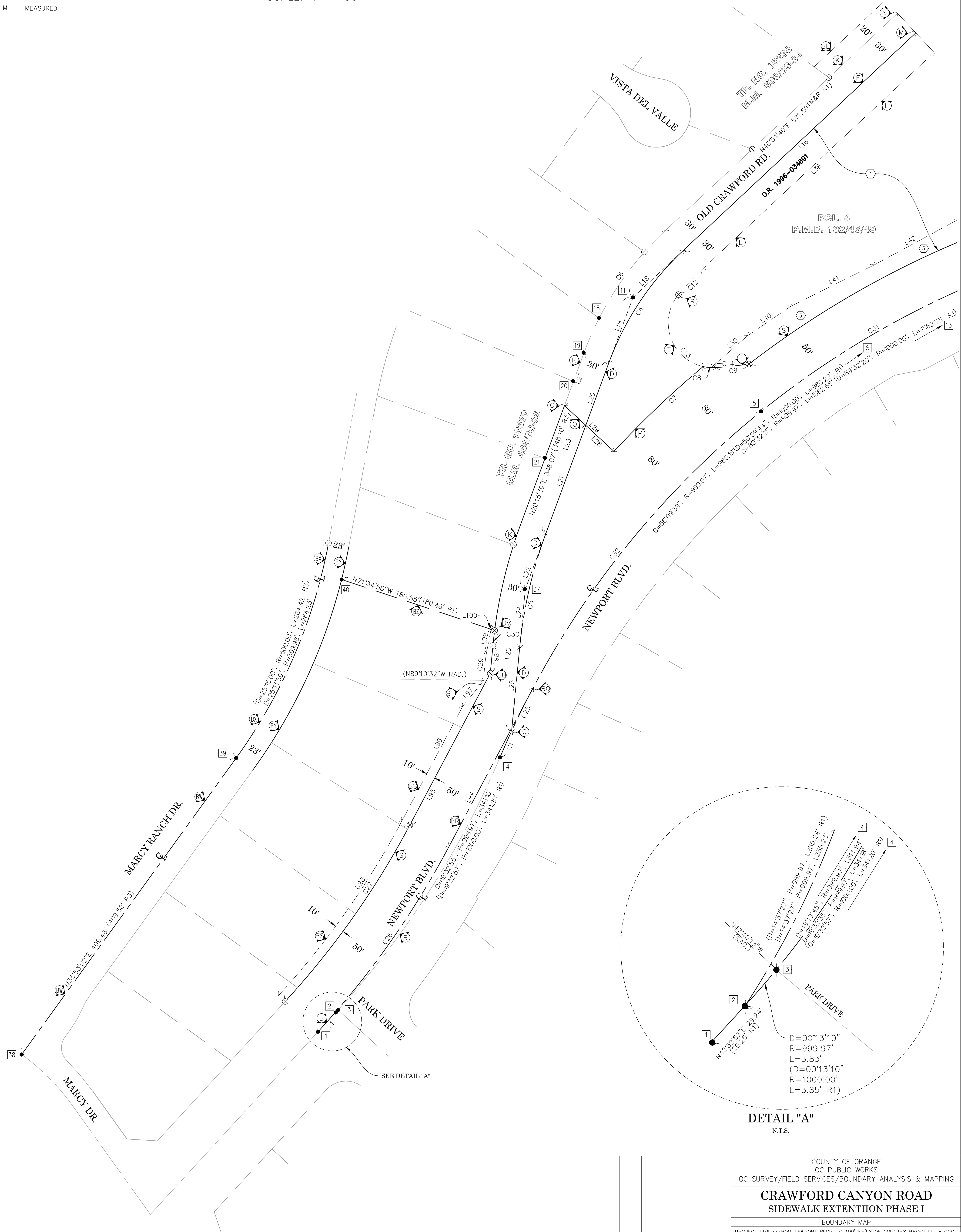
- FOUND MONUMENT AS NOTED
- ⊗ SEARCHED, NOTHING FOUND / S.N.F.
- CR CALC. FROM RECORD MAP
- R RECORD MAP
- M MEASURED



SEE SHEET 5

U.S. *Survey*
Foot

OC Public Works
OC Survey/Field Services
Boundary Analysis & Mapping



DETAIL "A"
N.T.S.

				COUNTY OF ORANGE OC PUBLIC WORKS OC SURVEY/FIELD SERVICES/BOUNDARY ANALYSIS & MAPPING		
		CRAWFORD CANYON ROAD SIDEWALK EXTENTIION PHASE I				
		BOUNDARY MAP				
		PROJECT LIMITS: FROM NEWPORT BLVD. TO 100' NE'LY OF COUNTRY HAVEN LN. ALONG CRAWFORD CANYON ROAD AND FROM 140' NE'LY OF HYDE PARK DR. TO CRAWFORD CANYON RD. ALONG NEWPORT BLVD.				
		DATE OF SURVEY: 07/08/2020		BY: J. RUSSO & PARTY		
		MAPPING		BY: H. AFTIM		
		OFFICE CHECK		BY: M. KUBISTY, PLS		
MARK	DATE	ITEM	FIELD CHECK		BY: J. RUSSO & PARTY	SHEET NO. 4 of 11
			SCALE: 1"=50'		W.O. #E019817P	
		REVISIONS		FILE #1920PW-IN0029		
				FILE: CRAWFORD CANYON ROAD_SIDEWALK EXTENTION_BOUNDARY_2020.DWG		

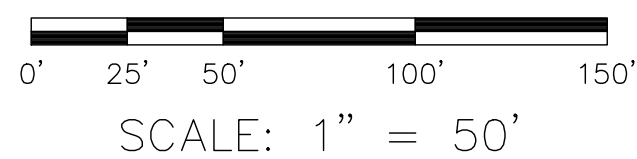
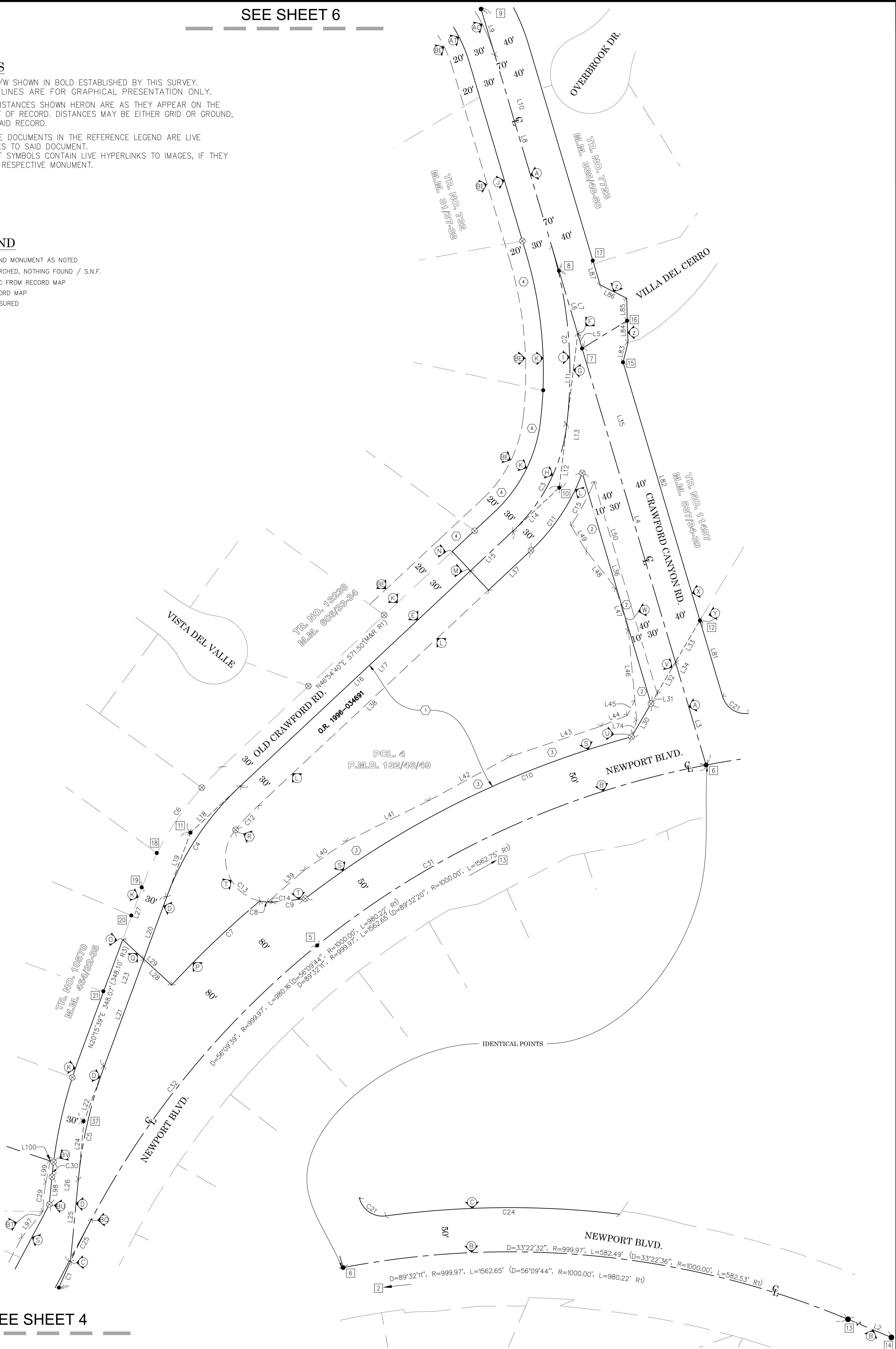
STREET R/W SHOWN IN BOLD ESTABLISHED BY THIS SURVEY.
THE LOT LINES ARE FOR GRAPHICAL PRESENTATION ONLY.

RECORD DISTANCES SHOWN HEREON ARE AS THEY APPEAR ON THE
DOCUMENT OF RECORD. DISTANCES MAY BE EITHER GRID OR GROUND,
AS PER SAID RECORD.

REFERENCE DOCUMENTS IN THE REFERENCE LEGEND ARE LIVE
HYPERLINKS TO SAID DOCUMENT.

MONUMENT SYMBOLS CONTAIN LIVE HYPERLINKS TO IMAGES, IF THEY
EXIST, OF RESPECTIVE MONUMENT.

●	FOUND MONUMENT AS NOTED
⊗	SEARCHED, NOTHING FOUND / S.N.F.
CR	CALC FROM RECORD MAP
R	RECORD MAP
M	MEASURED

U.S. *Survey*
Foot

OC Public Works
OC Survey/Field Services
Boundary Analysis & Mapping

			COUNTY OF ORANGE OC PUBLIC WORKS OC SURVEY/FIELD SERVICES/BOUNDARY ANALYSIS & MAPPING	
			<h1>CRAWFORD CANYON ROAD</h1> <h2>SIDEWALK EXTENTION PHASE I</h2>	
			<h3>BOUNDARY MAP</h3>	
			PROJECT LIMITS: FROM NEWPORT BLVD. TO 100' N'ELY OF COUNTRY HAVEN LN. ALONG CRAWFORD CANYON ROAD AND FROM 140' N'ELY OF HYDE PARK DR. TO CRAWFORD	
			CANYON RD. ALONG NEWPORT BLVD.	
			DATE OF SURVEY: 07/08/2020	<div> <div>SHEET NO.</div> <div>5</div> <div>of</div> <div>11</div> </div>
			MAPPING	
			OFFICE CHECK	
			FIELD CHECK	
MARK	DATE	ITEM	SCALE: 1"=50' W.O. #019817P FILE: CRAWFORD_CANYON_ROAD_SIDEWALK_EXTENSION_BOUNDARY_2020.DWG	

NOTES

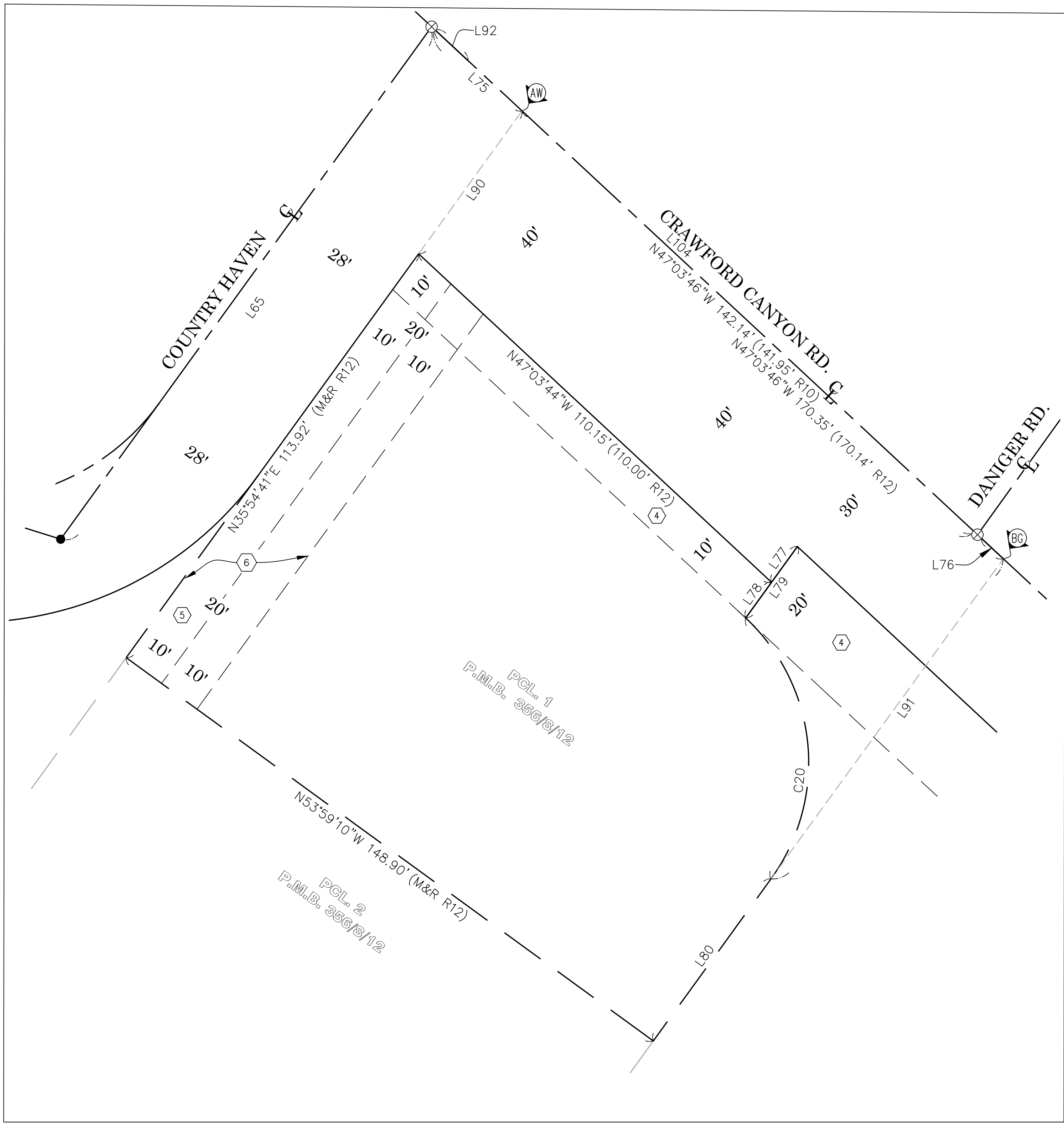
STREET R/W SHOWN IN BOLD ESTABLISHED BY THIS SURVEY.
THE LOT LINES ARE FOR GRAPHICAL PRESENTATION ONLY.
RECORD DISTANCES SHOWN HERON ARE AS THEY APPEAR ON THE DOCUMENT OF RECORD. DISTANCES MAY BE EITHER GRID OR GROUND, AS PER SAID RECORD.
REFERENCE DOCUMENTS IN THE REFERENCE LEGEND ARE LIVE HYPERLINKS TO SAID DOCUMENT.
MONUMENT SYMBOLS CONTAIN LIVE HYPERLINKS TO IMAGES, IF THEY EXIST, OF RESPECTIVE MONUMENT.

LEGEND

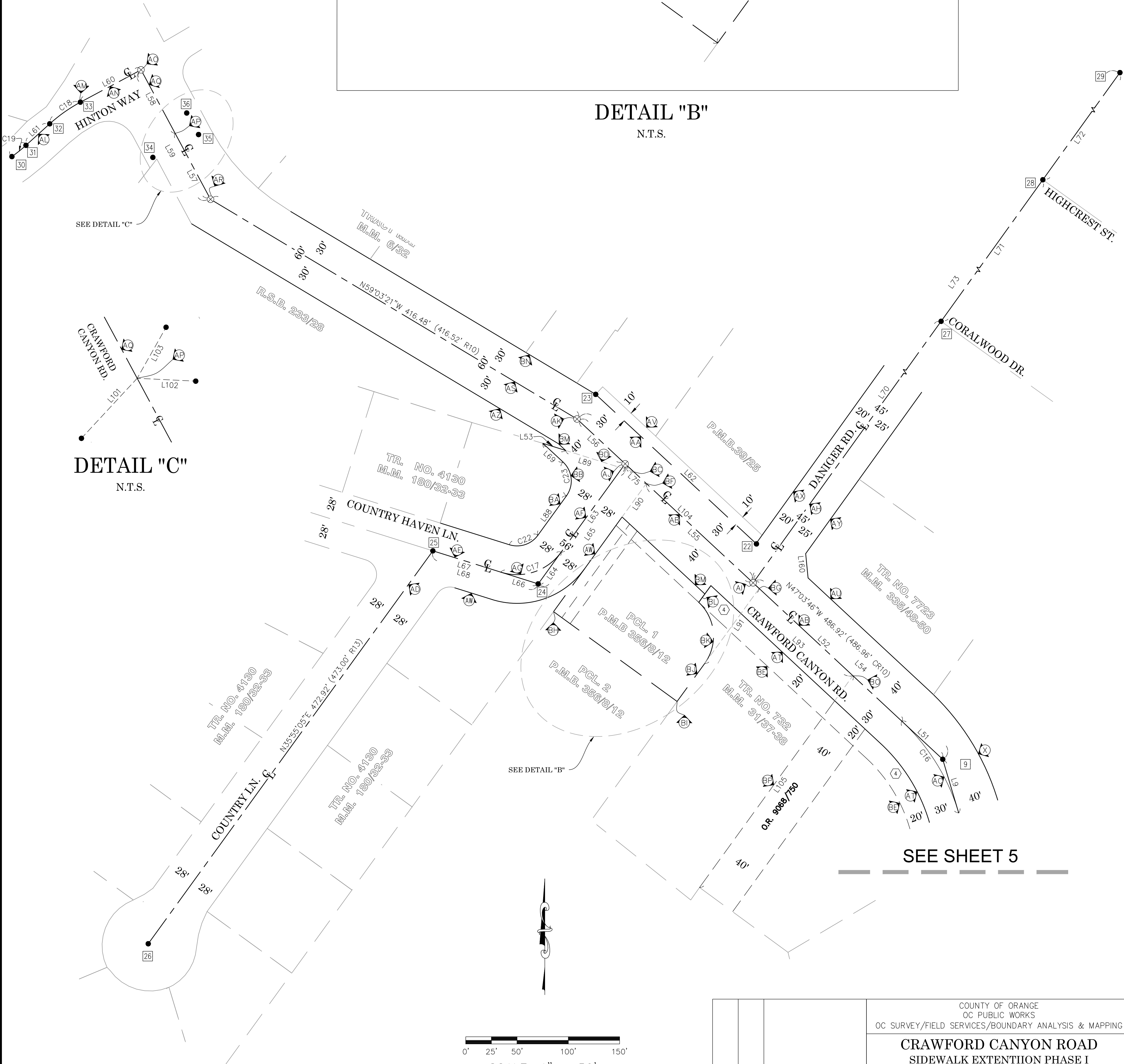
- FOUND MONUMENT AS NOTED
- ⊗ SEARCHED, NOTHING FOUND / S.N.F.
- CR CALC. FROM RECORD MAP
- R RECORD MAP
- M MEASURED

U.S. Survey Foot

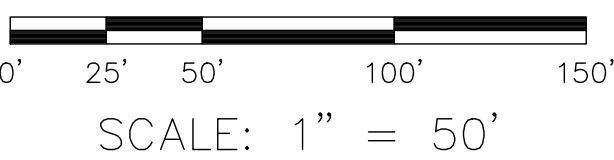
OC Public Works
OC Survey/Field Services
Boundary Analysis & Mapping



DETAIL "B"
N.T.S.



DETAIL "C"
N.T.S.



SEE SHEET 5

			COUNTY OF ORANGE OC PUBLIC WORKS OC SURVEY/FIELD SERVICES/BOUNDARY ANALYSIS & MAPPING		
			CRAWFORD CANYON ROAD SIDEWALK EXTENTION PHASE I		
			BOUNDARY MAP		
			PROJECT LIMITS: FROM NEWPORT BLVD. TO 100' NE'LY OF COUNTRY HAVEN LN. ALONG CRAWFORD CANYON ROAD AND FROM 140' NE'LY OF HYDE PARK DR. TO CRAWFORD CANYON RD. ALONG NEWPORT BLVD.		
			DATE OF SURVEY: 07/08/2020	BY: J. RUSSO & PARTY	SHEET NO. 6 of 11
			MAPPING	BY: H. AFIM	
			OFFICE CHECK	BY: M. KUBISTY, PLS	
			FIELD CHECK	BY: J. RUSSO & PARTY	
MARK	DATE	ITEM	SCALE: 1"=50'	W.O. #E019817P	FILE #1920PW-IN0029
REVISIONS			FILE: CRAWFORD CANYON ROAD_SIDEWALK EXTENTION_BOUNDARY_2020.DWG		

SEE SHEET 8

12972
MARCY RANCH RD.

CONC. FLOWLINE
EL.= 347.06'

12992
MARCY RANCH RD.

13012
MARCY RANCH RD.

13026
MARCY RANCH RD.

HEADWALL
TW EL = 349.90'

HEADWALL
TW RT EL = 346.59'
TW LT EL = 346.63'
42"Ø CMP INV= 339.72'

13042
MARCY RANCH RD.

13062
MARCY RANCH RD.

NEWPORT BLVD.

0' 10' 20' 40' 60'
SCALE: 1" = 20'

LEGEND

SYMBOL

- Control Point
- Drop Inlet
- Fire Hydrant
- Gate, Double
- Gate, Single
- Grate Inlet
- Guy Wire Anchor
- Light Pole, Double
- Light Pole, Single
- Mailbox
- Manhole Electrical
- Manhole Sewer
- Manhole Storm Drain
- Manhole Telephone
- Meter Water
- Pedestrian Activator
- Pipe Inlet/Outlet
- Post
- Pull Box Cable TV
- Pull Box Electrical
- Pull Box Irrigation
- Pull Box Traffic
- Pull Box Undefined
- Tree

SYMBOL

- Tree, Palm
- Utility Pole w/ 1 Light
- Utility Pole w/ 2 Lights
- Utility Pole, Underground
- Utility Pole w/ 1 Light, Underground
- Utility Pole w/ 2 Lights, Underground
- Valve Gas
- Valve Water
- Vent Pipe
- Sprinkler

ABBREVIATION

- | | |
|------|---------------|
| AC | Asphalt |
| CL | Centerline |
| CONC | Concrete |
| CP | Control Point |
| EL | Elevation |
| FL | Flowline |
| FD | Found |
| INV | Invert |
| PP | Power Pole |
| SS | Sewer |
| SD | Storm Drain |
| MH | Manhole |

LINE PATTERN KEY

- | | |
|-----------|--------------------------|
| [Pattern] | Block Wall |
| [Pattern] | Planter Brick |
| [Pattern] | Centerline |
| [Pattern] | Concrete Wall |
| [Pattern] | Edge of Concrete |
| [Pattern] | Edge of Asphalt Pavement |
| [Pattern] | Fence Chainlink |
| [Pattern] | Flowline |
| [Pattern] | Grade Line |
| [Pattern] | Guard Rail |
| [Pattern] | Hinge Point |
| [Pattern] | Property Line |
| [Pattern] | Planter Stone |
| [Pattern] | Right of Way |
| [Pattern] | Stone Wall |
| [Pattern] | Striping |

AREA PATTERN KEY

- | | |
|-----------|------------------|
| [Pattern] | Concrete |
| [Pattern] | Brick |
| [Pattern] | Dirt |
| [Pattern] | Grass |
| [Pattern] | Gravel / Rip Rap |

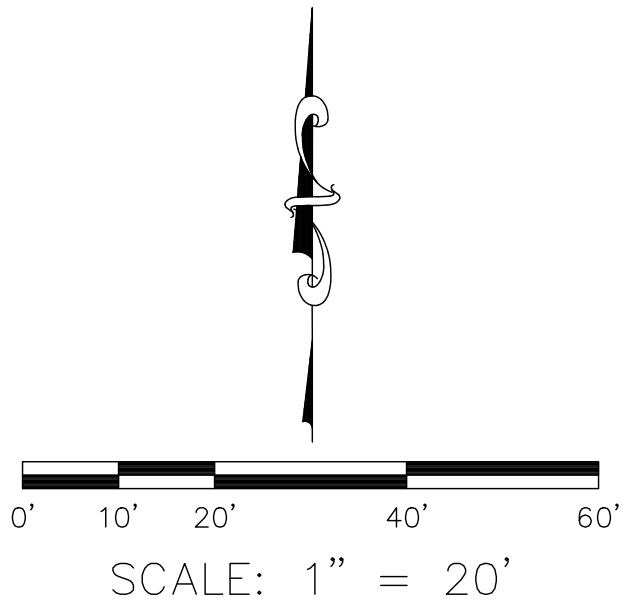
1
BEGIN CL CONST. ALIGNMENT
100+00.00
N: 2228013.128
E: 6093582.1328

U.S. Survey
Foot

OC Public Works
OC Survey/Field Services
Boundary Analysis & Mapping

COUNTY OF ORANGE OC PUBLIC WORKS OC SURVEY/FIELD SERVICES/BOUNDARY ANALYSIS & MAPPING	
CRAWFORD CANYON ROAD SIDEWALK EXTENTION PHASE I	
TOPO MAP	
PROJECT LIMITS: FROM NEWPORT BLVD. TO 100' NE'LY OF COUNTRY HAVEN LN. ALONG CRAWFORD CANYON ROAD AND FROM 140' NE'LY OF HYDE PARK DR. TO CRAWFORD CANYON RD. ALONG NEWPORT BLVD.	
DATE OF SURVEY: 07/08/2020	BY: J. RUSSO & PARTY
MAPPING	BY: H. AFTIM
OFFICE CHECK	BY: M. KUBISTY, PLS
FIELD CHECK	BY: J. RUSSO & PARTY
SCALE: N.T.S.	W.O. #E019817P
FILE: CRAWFORD CANYON ROAD_SIDEWALK EXTENTION_TOPO_2020.DWG	FILE #1920PW-IN0029

SHEET NO.
7
of
11



MATCH LINE
SEE SHEET 9

LEGEND

SYMBOL

- Control Point
- Drop Inlet
- Fire Hydrant
- Gate, Double
- Gate, Single
- Grate Inlet
- Guy Wire Anchor
- Light Pole, Double
- Light Pole, Single
- Mailbox
- Manhole Electrical
- Manhole Sewer
- Manhole Storm Drain
- Manhole Telephone
- Meter Water
- Pedestrian Activator
- Pipe Inlet/Outlet
- Post
- Pull Box Cable TV
- Pull Box Electrical
- Pull Box Irrigation
- Pull Box Traffic
- Pull Box Undefined
- Tree

SYMBOL

- Tree, Palm
- Utility Pole w/ 1 Light
- Utility Pole w/ 2 Lights
- Utility Pole, Underground
- Utility Pole w/ 1 Light, Underground
- Utility Pole w/ 2 Lights, Underground
- Valve Gas
- Valve Water
- Vent Pipe
- Sprinkler

ABBREVIATION

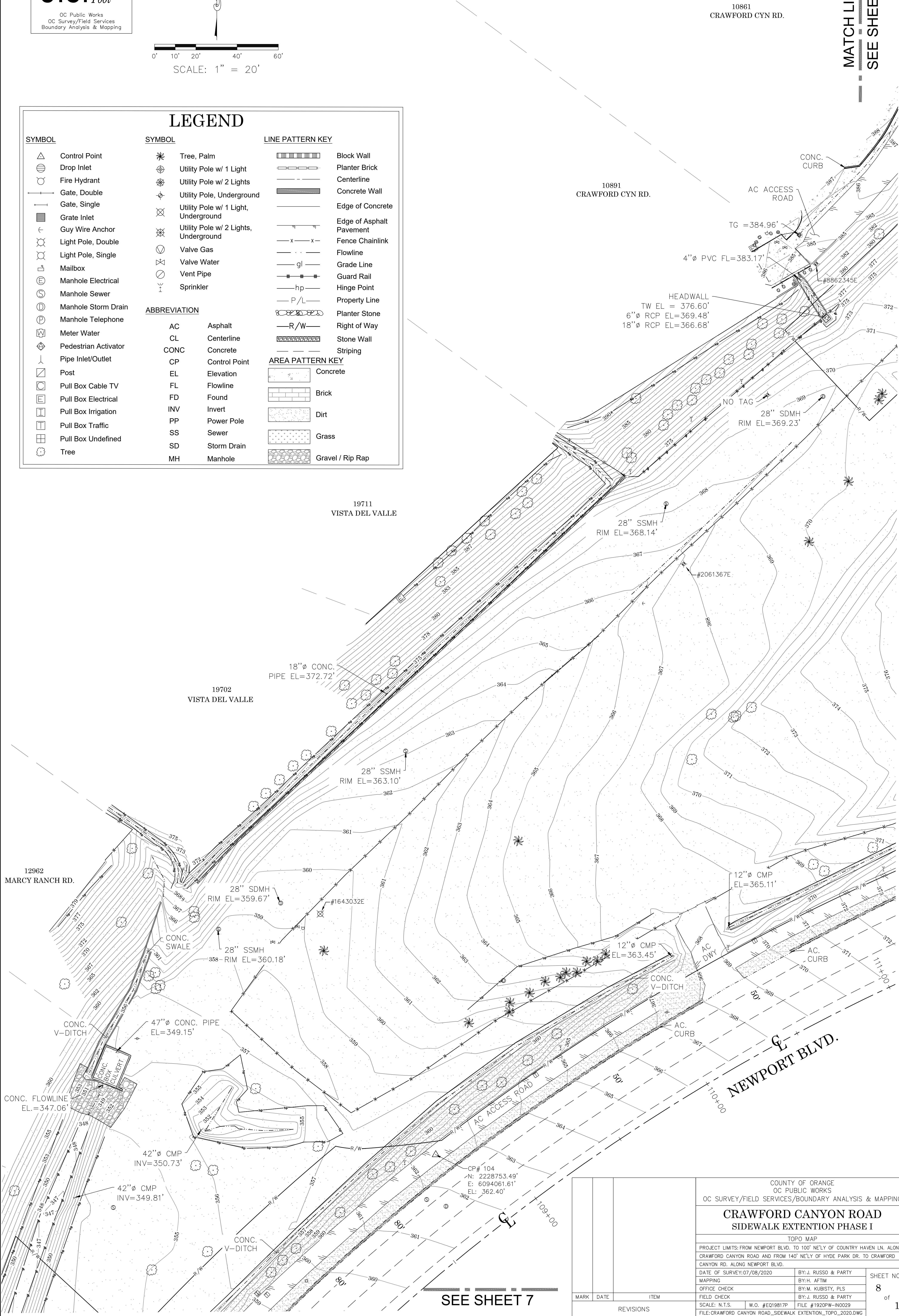
- | | |
|------|---------------|
| AC | Asphalt |
| CL | Centerline |
| CONC | Concrete |
| CP | Control Point |
| EL | Elevation |
| FL | Flowline |
| FD | Found |
| INV | Invert |
| PP | Power Pole |
| SS | Sewer |
| SD | Storm Drain |
| MH | Manhole |

LINE PATTERN KEY

- | | |
|-----------|--------------------------|
| [Pattern] | Block Wall |
| [Pattern] | Planter Brick |
| [Pattern] | Centerline |
| [Pattern] | Concrete Wall |
| [Pattern] | Edge of Concrete |
| [Pattern] | Edge of Asphalt Pavement |
| [Pattern] | Fence Chainlink |
| [Pattern] | Flowline |
| [Pattern] | Grade Line |
| [Pattern] | Guard Rail |
| [Pattern] | Hinge Point |
| [Pattern] | Property Line |
| [Pattern] | Planter Stone |
| [Pattern] | Right of Way |
| [Pattern] | Stone Wall |
| [Pattern] | Striping |

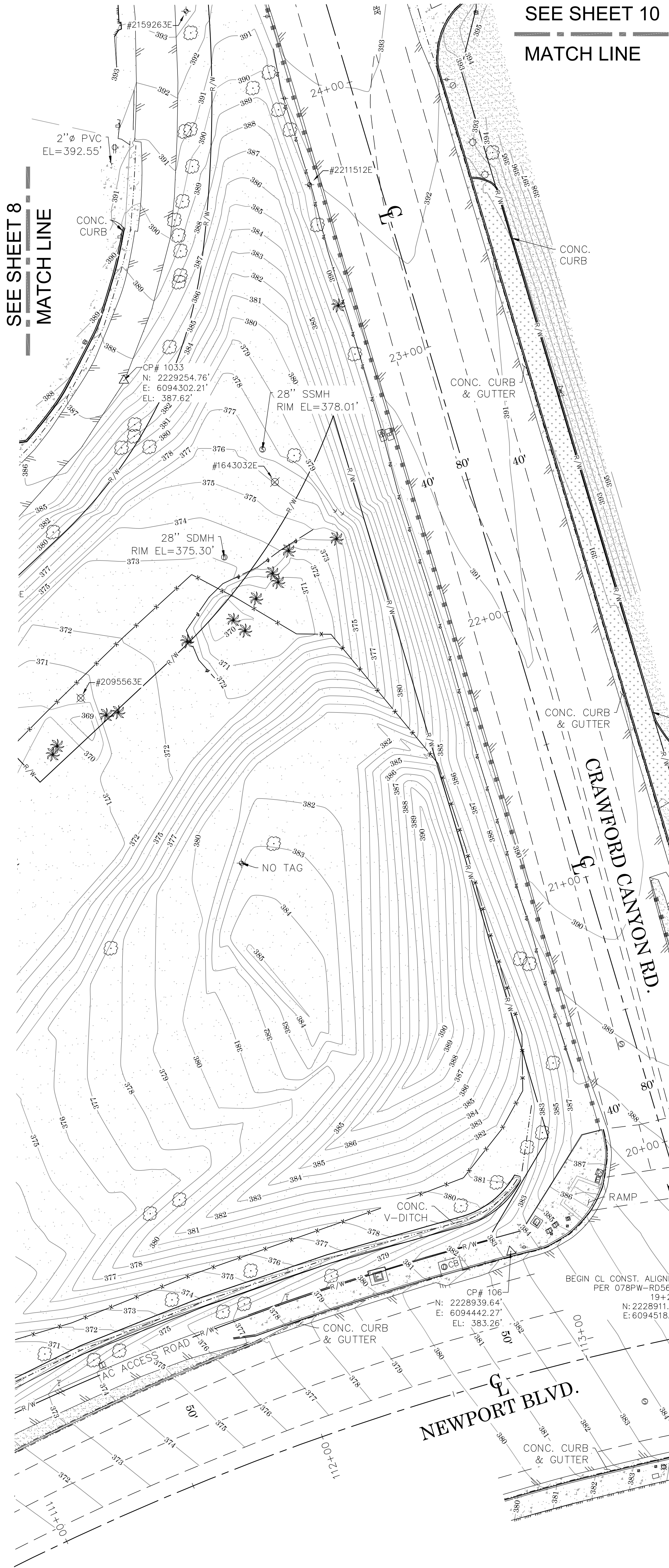
AREA PATTERN KEY

- | | |
|-----------|------------------|
| [Pattern] | Concrete |
| [Pattern] | Brick |
| [Pattern] | Dirt |
| [Pattern] | Grass |
| [Pattern] | Gravel / Rip Rap |



SEE SHEET 7

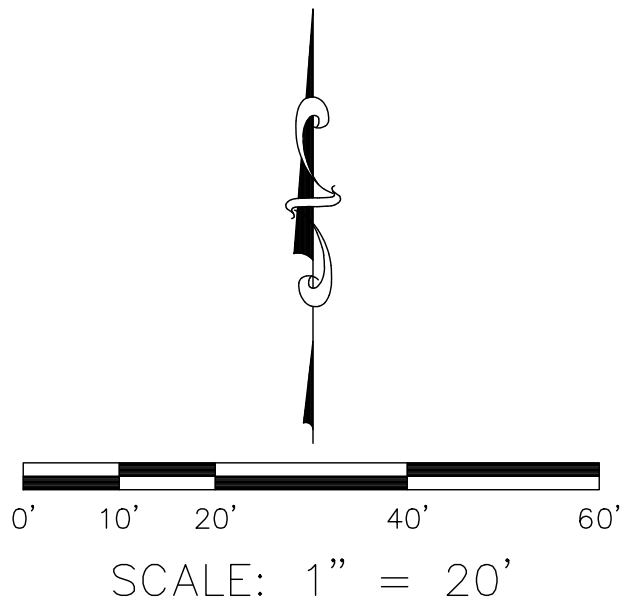
			COUNTY OF ORANGE OC PUBLIC WORKS OC SURVEY/FIELD SERVICES/BOUNDARY ANALYSIS & MAPPING			
			CRAWFORD CANYON ROAD SIDEWALK EXTENSION PHASE I			
			TOPO MAP			
			PROJECT LIMITS: FROM NEWPORT BLVD. TO 100' NE'LY OF COUNTRY HAVEN LN. ALONG CRAWFORD CANYON ROAD AND FROM 140' NE'LY OF HYDE PARK DR. TO CRAWFORD CANYON RD. ALONG NEWPORT BLVD.			
			DATE OF SURVEY: 07/08/2020		BY: J. RUSSO & PARTY	
			MAPPING		BY: H. AFTIM	
			OFFICE CHECK		BY: M. KUBISTY, PLS	
MARK	DATE	ITEM	FIELD CHECK		BY: J. RUSSO & PARTY	
			SCALE: N.T.S.		W.O. #E019817P	
			FILE: CRAWFORD CANYON ROAD_SIDWALK EXTENSION_TOPO_2020.DWG		FILE #1920PW-IN0029	
REVISIONS			SHEET NO. 8 of 11			



LEGEND					
SYMBOL		SYMBOL		LINE PATTERN KEY	
	Control Point		Tree, Palm		Block Wall
	Drop Inlet		Utility Pole w/ 1 Light		Planter Brick
	Fire Hydrant		Utility Pole w/ 2 Lights		Centerline
	Gate, Double		Utility Pole, Underground		Concrete Wall
	Gate, Single		Utility Pole w/ 1 Light, Underground		Edge of Concrete
	Grate Inlet		Utility Pole w/ 2 Lights, Underground		Edge of Asphalt Pavement
	Guy Wire Anchor		Valve Gas		Fence Chainlink
	Light Pole, Double		Valve Water		Flowline
	Light Pole, Single		Vent Pipe		Grade Line
	Mailbox		Sprinkler		Guard Rail
	Manhole Electrical				Hinge Point
	Manhole Sewer				Property Line
	Manhole Storm Drain				Planter Stone
	Manhole Telephone				Right of Way
	Meter Water				Stone Wall
	Pedestrian Activator				Striping
	Pipe Inlet/Outlet				
	Post				
	Pull Box Cable TV				
	Pull Box Electrical				
	Pull Box Irrigation				
	Pull Box Traffic				
	Pull Box Undefined				
	Tree				

ABBREVIATION	
AC	Asphalt
CL	Centerline
CONC	Concrete
CP	Control Point
EL	Elevation
FL	Flowline
FD	Found
INV	Invert
PP	Power Pole
SS	Sewer
SD	Storm Drain
MH	Manhole

AREA PATTERN KEY	
	Concrete
	Brick
	Dirt
	Grass
	Gravel / Rip Rap



U.S. Survey Foot
OC Public Works
OC Survey/Field Services
Boundary Analysis & Mapping

			COUNTY OF ORANGE OC PUBLIC WORKS OC SURVEY/FIELD SERVICES/BOUNDARY ANALYSIS & MAPPING	
			CRAWFORD CANYON ROAD SIDEWALK EXTENTION PHASE I	
			TOPO. MAP	
			PROJECT LIMITS: FROM NEWPORT BLVD. TO 100' NE'LY OF COUNTRY HAVEN LN. ALONG CRAWFORD CANYON ROAD AND FROM 140' NE'LY OF HYDE PARK DR. TO CRAWFORD CANYON RD. ALONG NEWPORT BLVD.	
			DATE OF SURVEY: 07/08/2020	BY: J. RUSSO & PARTY
			MAPPING	BY: H. AFTIM
			OFFICE CHECK	BY: M. KUBISTY, PLS
			FIELD CHECK	BY: J. RUSSO & PARTY
			SCALE: N.T.S.	W.O. #E019817P
			FILE: #1920PW-IN029	
			FILE: CRAWFORD CANYON ROAD_SIDEWALK EXTENTION_TOPO_2020.DWG	
MARK	DATE	ITEM		
REVISIONS				
			SHEET NO. 9 of 11	

SEE SHEET 11
MATCH LINE

LEGEND

SYMBOL

- Control Point
Drop Inlet
Fire Hydrant
Gate, Double
Gate, Single
Grate Inlet
Guy Wire Anchor
Light Pole, Double
Light Pole, Single
Mailbox
Manhole Electrical
Manhole Sewer
Manhole Storm Drain
Manhole Telephone
Meter Water
Pedestrian Activator
Pipe Inlet/Outlet
Post
Pull Box Cable TV
Pull Box Electrical
Pull Box Irrigation
Pull Box Traffic
Pull Box Undefined
Tree

SYMBOL

- Tree, Palm
Utility Pole w/ 1 Light
Utility Pole w/ 2 Lights
Utility Pole, Underground
Utility Pole w/ 1 Light, Underground
Utility Pole w/ 2 Lights, Underground
Valve Gas
Valve Water
Vent Pipe
Sprinkler

ABBREVIATION

- AC Asphalt
CL Centerline
CONC Concrete
CP Control Point
EL Elevation
FL Flowline
FD Found
INV Invert
PP Power Pole
SS Sewer
SD Storm Drain
MH Manhole

LINE PATTERN KEY

- Block Wall
Planter Brick
Centerline
Concrete Wall
Edge of Concrete
Edge of Asphalt Pavement
Fence Chainlink
Flowline
Grade Line
Guard Rail
Hinge Point
Property Line
Planter Stone
Right of Way
Stone Wall
Striping

AREA PATTERN KEY

- Concrete
Brick
Dirt
Grass
Gravel / Rip Rap

0' 10' 20' 40' 60'
SCALE: 1" = 20'

U.S. Survey Foot
OC Public Works
OC Survey/Field Services
Boundary Analysis & Mapping

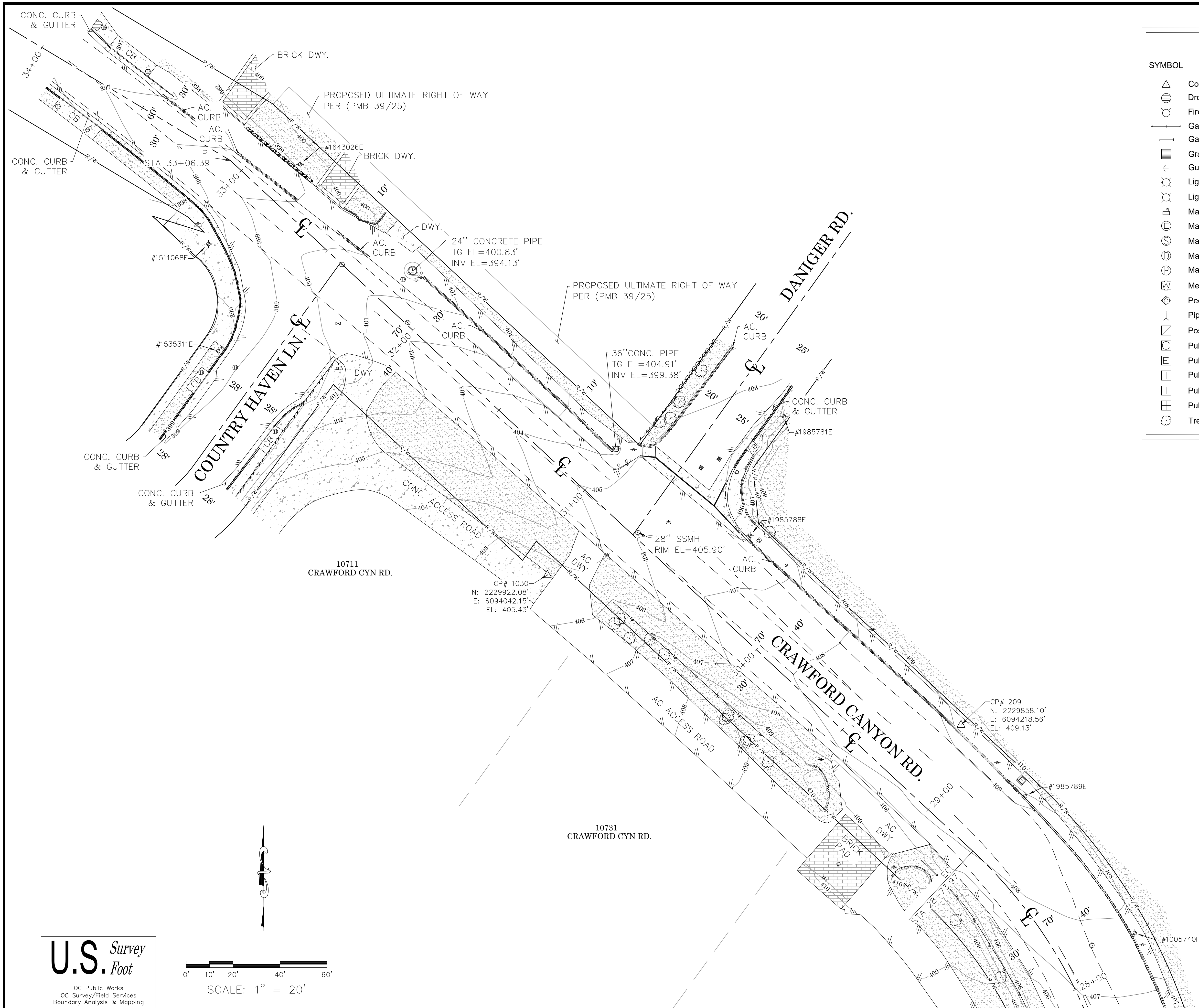
MATCH LINE
SEE SHEET 9

MATCH LINE
SEE SHEET 8

COUNTY OF ORANGE OC PUBLIC WORKS OC SURVEY/FIELD SERVICES/BOUNDARY ANALYSIS & MAPPING	
CRAWFORD CANYON ROAD SIDEWALK EXTENTION PHASE I	
TOPO MAP	
PROJECT LIMITS: FROM NEWPORT BLVD. TO 100' NE'LY OF COUNTRY HAVEN LN. ALONG CRAWFORD CANYON ROAD AND FROM 140' NE'LY OF HYDE PARK DR. TO CRAWFORD CANYON RD. ALONG NEWPORT BLVD.	
DATE OF SURVEY: 07/08/2020	BY: J. RUSSO & PARTY
MAPPING	BY: H. AFTIM
OFFICE CHECK	BY: M. KUBISTY, PLS
FIELD CHECK	BY: J. RUSSO & PARTY
SCALE: 1" = 20'	W.O. #E019817P
FILE: CRAWFORD CANYON ROAD_SIDEWALK EXTENTION_TOPO_2020.DWG	FILE #1920PW-IN0029

SHEET NO.
10
of
11

MARK DATE ITEM REVISIONS



LEGEND

SYMBOL

- Control Point
- Drop Inlet
- Fire Hydrant
- Gate, Double
- Gate, Single
- Grate Inlet
- Guy Wire Anchor
- Light Pole, Double
- Light Pole, Single
- Mailbox
- Manhole Electrical
- Manhole Sewer
- Manhole Storm Drain
- Manhole Telephone
- Meter Water
- Pedestrian Activator
- Pipe Inlet/Outlet
- Post
- Pull Box Cable TV
- Pull Box Electrical
- Pull Box Irrigation
- Pull Box Traffic
- Pull Box Undefined
- Tree

SYMBOL

- Tree, Palm
- Utility Pole w/ 1 Light
- Utility Pole w/ 2 Lights
- Utility Pole, Underground
- Utility Pole w/ 1 Light, Underground
- Utility Pole w/ 2 Lights, Underground
- Valve Gas
- Valve Water
- Vent Pipe
- Sprinkler

LINE PATTERN KEY

- Block Wall
- Planter Brick
- Centerline
- Concrete Wall
- Edge of Concrete
- Edge of Asphalt Pavement
- Fence Chainlink
- Flowline
- Grade Line
- Guard Rail
- Hinge Point
- Property Line
- Planter Stone
- Right of Way
- Stone Wall
- Striping

AREA PATTERN KEY

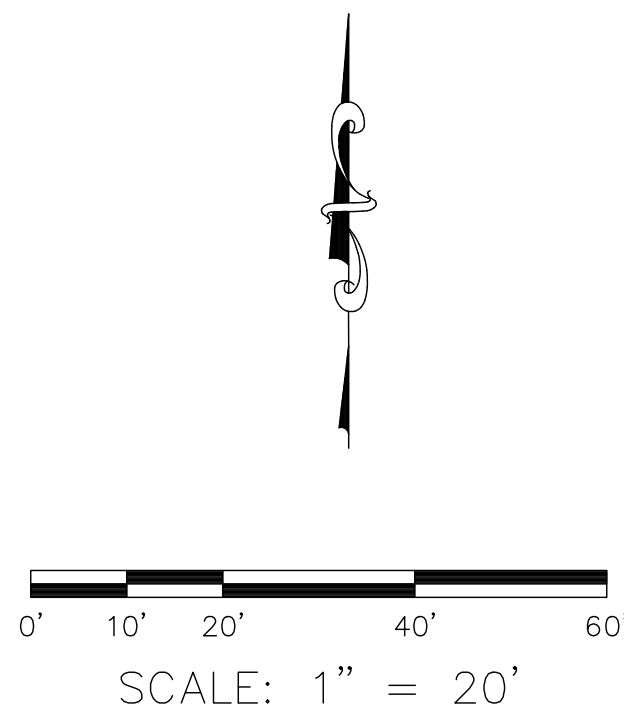
- Concrete
- Brick
- Dirt
- Grass
- Gravel / Rip Rap

ABBREVIATION

AC	Asphalt
CL	Centerline
CONC	Concrete
CP	Control Point
EL	Elevation
FL	Flowline
FD	Found
INV	Invert
PP	Power Pole
SS	Sewer
SD	Storm Drain
MH	Manhole

MATCH LINE
SEE SHEET 10

U.S. Survey
Foot
OC Public Works
OC Survey/Field Services
Boundary Analysis & Mapping



				COUNTY OF ORANGE OC PUBLIC WORKS OC SURVEY/FIELD SERVICES/BOUNDARY ANALYSIS & MAPPING	
				CRAWFORD CANYON ROAD SIDEWALK EXTENTION PHASE I	
				TOPOGRAPHIC MAP	
				PROJECT LIMITS: FROM NEWPORT BLVD. TO 100' NE'LY OF COUNTRY HAVEN LN. ALONG CRAWFORD CANYON ROAD AND FROM 140' NE'LY OF HYDE PARK DR. TO CRAWFORD CANYON RD. ALONG NEWPORT BLVD.	
		DATE OF SURVEY: 07/08/2020		BY: J. RUSSO & PARTY	
		MAPPING		BY: H. AFTIM	
		OFFICE CHECK		BY: M. KUBISTY, PLS	
		FIELD CHECK		BY: J. RUSSO & PARTY	
MARK		DATE	ITEM	SHEET NO. 11 of 11	
		REVISIONS		SCALE: 1" = 20' W.O. #EQ19817P FILE #1920PW-IN0029 FILE: CRAWFORD CANYON ROAD_SIDEWALK EXTENTION_TOPO_2020.DWG	