

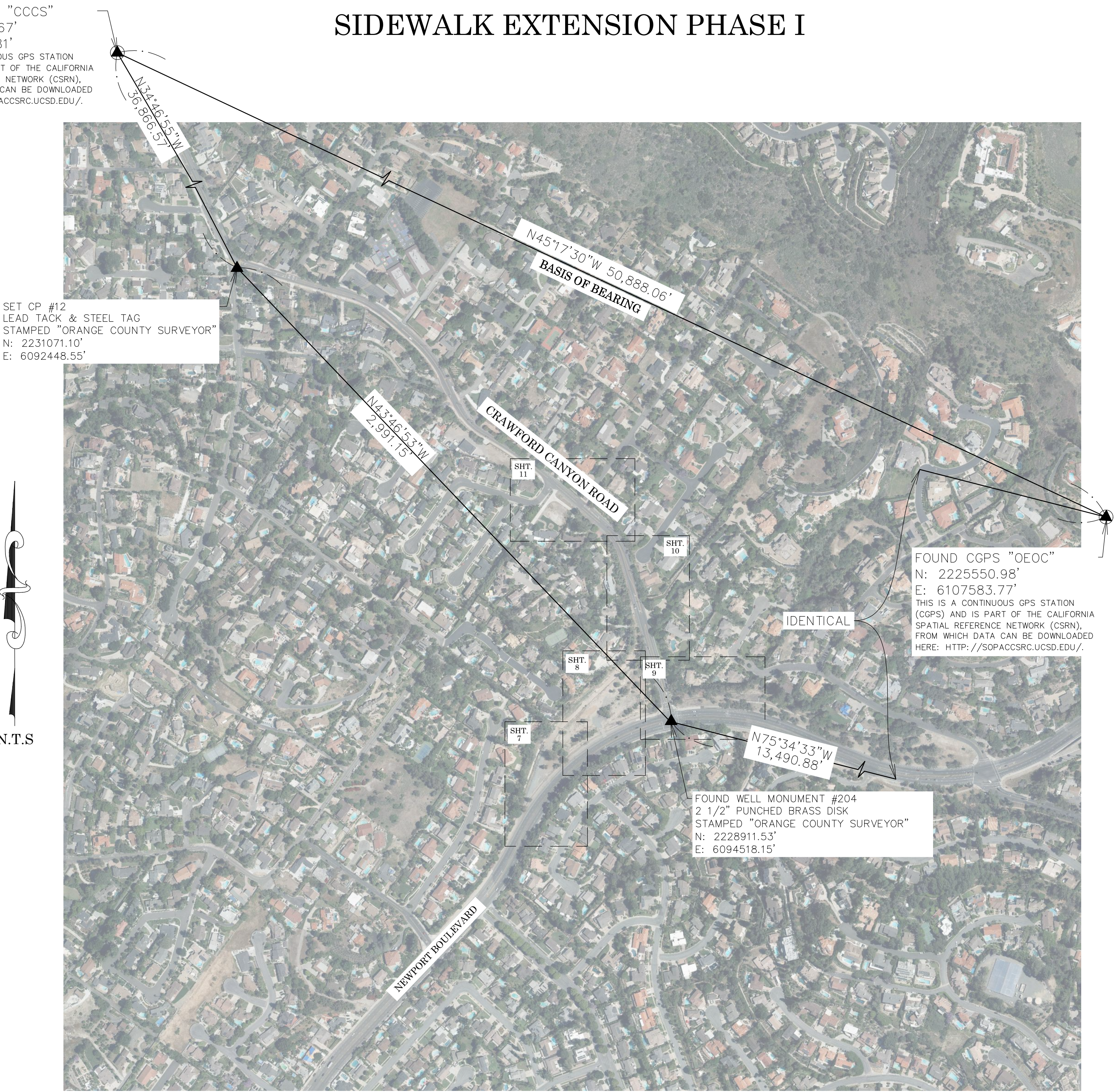
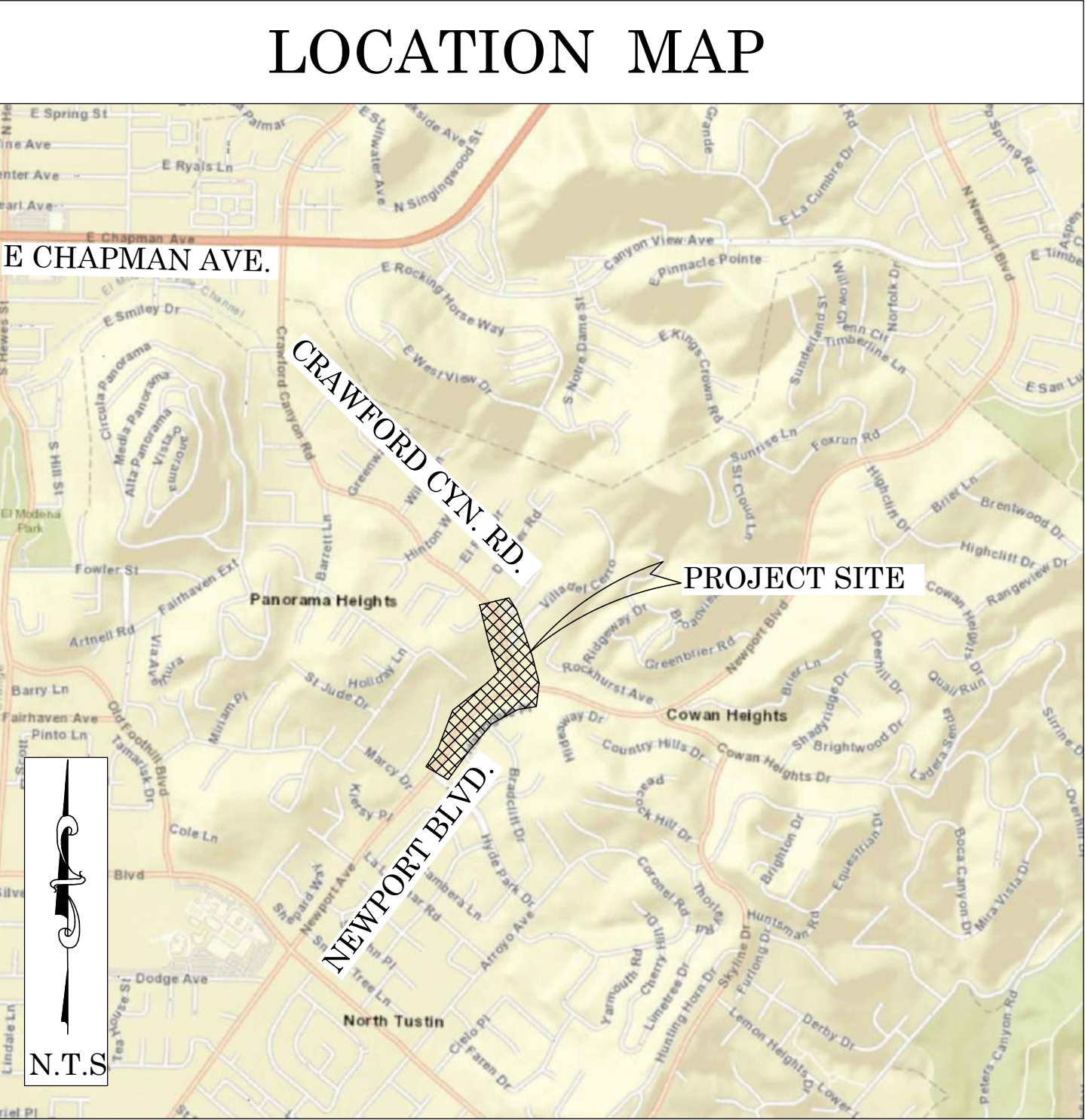


OC PUBLIC WORKS DEPARTMENT
JAMES TREADAWAY, DIRECTOR OF PUBLIC WORKS
KEVIN HILLS, COUNTY SURVEYOR
CRAWFORD CANYON ROAD



SIDEWALK EXTENSION PHASE I

FOUND CGPS "CCCS"
N: 2261350.67'
E: 6071417.81'
THIS IS A CONTINUOUS GPS STATION
(CGPS) AND IS PART OF THE CALIFORNIA
SPATIAL REFERENCE NETWORK (CSRN),
FROM WHICH DATA CAN BE DOWNLOADED
HERE: [HTTP://SOPACCSRC.UCSD.EDU/](http://SOPACCSRC.UCSD.EDU/).



BASIS OF BEARINGS

THE BASIS OF BEARINGS FOR THIS SURVEY IS BASED ON THE CALIFORNIA COORDINATE SYSTEM (CCS83), ZONE VI, NAD 83, OCS (2017.50) EPOCH ADJUSTMENT, AS DETERMINED LOCALLY BY A LINE BETWEEN CONTINUOUS GLOBAL POSITIONING STATIONS CGPS STATIONS (CCCS) AND (OEOC) BEING NORTH 45°17'30" WEST AS DERIVED FROM THE COORDINATES PUBLISHED BY THE CALIFORNIA SPATIAL REFERENCE CENTER (CSRC) ALONG WITH DATA SHEETS ON FILE IN THE OFFICE OF THE ORANGE COUNTY SURVEYOR.

HORIZONTAL DATUM

COORDINATES SHOWN ARE BASED ON THE CALIFORNIA COORDINATE SYSTEM (CCS83), ZONE VI, NAD 83, OCS (2017.50) EPOCH ADJUSTMENT.

ALL DISTANCES SHOWN ARE GRID, UNLESS OTHERWISE NOTED. TO OBTAIN GROUND DISTANCES MULTIPLY GRID BY A COMBINED FACTOR OF 1.000029521.

THIS COMBINATION FACTOR WAS HELD AT POINT NUMBER #106 N: 2228939.64', E: 6094442.27', ELEVATION: 383.26'
ALL DISTANCES ARE BASED ON THE U.S. SURVEY FOOT.

VERTICAL DATUM

O.C.S. BM. #3A-87-71 ELEV. = 331.822' YEAR LEVELED 1991

NGVD 1988 (O.C.S. 1995 ADJUSTMENT)

DESCRIPTION: FOUND 3 1/4" OCS ALUMINUM BENCHMARK DISK STAMPED "3A-87-71", SET IN THE NORTHWEST CORNER OF A 4.5 FT. BY 25 FT. CONCRETE CATCH BASIN. LOCATED IN THE SOUTHEAST CORNER OF THE INTERSECTION OF HYPE PARK DRIVE AND NEWPORT BOULEVARD.

BASIS OF STATIONING

THE BASIS OF STATIONING FOR THE CENTERLINE OF CRAWFORD CANYON ROAD SHOWN HEREON WAS ESTABLISHED BY HOLDING 19+29.32 AT THE CENTERLINE INTERSECTION OF CRAWFORD CANYON ROAD AND NEWPORT AVE PER RECORD DRAWING NO. 078PW-RD560019 DATED 01/18/1990 AND INCREASING N'WLY THEREFROM.

THE BASIS OF STATIONING FOR THE CENTERLINE OF NEWPORT AVE SHOWN HEREON WAS ESTABLISHED BY HOLDING 100+00 (ASSUMED) AT THE CENTERLINE INTERSECTION OF NEWPORT AVE & INCREASING N'ELY THEREFROM.

NOTES

THE SURVEY INFORMATION SHOWN HEREON IS TO BE USED FOR TOPOGRAPHIC RELATIONSHIPS ONLY AND IS NOT INTENDED FOR LAND ACQUISITION OR BOUNDARY PURPOSES.

PARCELS SHOWN WITHOUT BEARING AND DISTANCES ARE FOR GRAPHICAL PURPOSES AND ARE PENDING RECEIPT OF TITLE REPORT.

SHEET INDEX

SHEET	NO.	DESCRIPTION
SHEET	1	TITLE SHEET
SHEET	2-6	BOUNDARY MAP
SHEETS	7-11	TOPOGRAPHIC MAP

PURPOSE OF SURVEY

THE PURPOSE OF THE SURVEY IS TO PROVIDE A TOPOGRAPHIC MAP AND RIGHT OF WAY ESTABLISHMENT FOR THIS PORTIONS OF THE CRAWFORD CANYON ROAD AND NEWPORT AVENUE.

SENIOR LAND SURVEYOR'S CERTIFICATE:

THIS MAP CORRECTLY REPRESENTS A SURVEY MADE BY ME OR UNDER MY DIRECTION IN CONFORMANCE WITH REQUIREMENTS OF THE PROFESSIONAL LAND SURVEYOR'S ACT; THIS 26TH DAY OF JULY, 2022.

MICHAEL KUBISTY, PLS. SENIOR LAND SURVEYOR



SENIOR LAND SURVEYOR'S STATEMENT:

THIS MAP HAS BEEN EXAMINED IN ACCORDANCE WITH THE PROFESSIONAL LAND SURVEYOR'S ACT; THIS 26TH DAY OF JULY, 2022.

MICHAEL LAFONTAINE, PLS. SENIOR LAND SURVEYOR



U.S. Survey
Foot

OC Public Works
OC Survey/Field Services
Boundary Analysis & Mapping

TOPOGRAPHIC MAPPING PROJECT

			COUNTY OF ORANGE OC PUBLIC WORKS OC SURVEY/FIELD SERVICES/BOUNDARY ANALYSIS & MAPPING		
			CRAWFORD CANYON ROAD SIDEWALK EXTENSION PHASE I		
			1 TITLE SHEET		
7/18/22			PROJECT LIMITS: FROM NEWPORT BLVD. TO 100' NE'LY OF COUNTRY HAVEN LN. ALONG CRAWFORD CANYON ROAD AND FROM 140' NE'LY OF HYDE PARK DR. TO CRAWFORD CANYON RD. ALONG NEWPORT BLVD.		
9/01/21			DATE OF SURVEY: 07/08/2020		
ADDITIONAL RIGHT OF WAY AND EASEMENT ESTABLISHMENT S'LY OF THE CENTERLINE OF NEWPORT BOULEVARD			BY: J. RUSSO & PARTY		
			MAPPING		
			BY: H. AFIM		
MARK			OFFICE CHECK		
DATE			BY: M. KUBISTY, PLS.		
ITEM			FIELD CHECK		
			BY: J. RUSSO & PARTY		
			SCALE: N.T.S.		
			W.O. #E019817P		
			FILE #1920PW-IN0029		
REVISIONS			FILE: CRAWFORD_CANYON_ROAD_SIDEWALK_EXTENSION_TOPO_2022.DWG		

SHEET NO.
1
of
12

ESTABLISHMENT NOTES

- A** ESTABLISHED THE CENTERLINE OF CRAWFORD CANYON ROAD BY HOLDING A LINE BETWEEN MONUMENTS **[6]** AND **[9]**
- B** ESTABLISHED THE CENTERLINE OF NEWPORT BLVD. BY HOLDING RECORD ANGLES, DISTANCES & CURVATURE INFORMATION PER (R1) BETWEEN MONUMENTS **[1]**, **[2]**, **[3]**, **[4]**, **[5]**, **[6]**, **[3]** AND **[14]**
- C** ESTABLISHED THE CENTERLINE INTERSECTION OF NEWPORT BLVD. AND OLD CRAWFORD ROAD BY HOLDING RECORD ANGLE, DISTANCE, AND CURVATURE INFORMATION NE'LY FROM MONUMENT **[4]** ALONG LINE ESTABLISHMENT **E**
- D** ESTABLISHED THE CENTERLINE OF OLD CRAWFORD ROAD PER (R1) BY LEAST SQUARES ADJUSTMENT BETWEEN MONUMENT **[11]** AND ESTABLISHMENT NOTE **C**
- E** ESTABLISHED THE CENTERLINE OF OLD CRAWFORD ROAD BY HOLDING A LINE BETWEEN MONUMENTS **[10]** AND **[11]**
- F** ESTABLISHED THE PI OF CRAWFORD CANYON ROAD BY HOLDING RECORD DISTANCE SE'LY FROM MONUMENT **[8]** PER (R4).
- G** ESTABLISHED THE CENTERLINE OF OLD CRAWFORD ROAD BY HOLDING A LINE BETWEEN MONUMENT **[10]** AND ESTABLISHMENT NOTE **C**
- H** ESTABLISHED THE CENTERLINE OF OLD CRAWFORD ROAD BY HOLDING A RECORD RADIUS PER (R6) AND TANGENT TO ESTABLISHMENT NOTES **C** AND **E**
- I** ESTABLISHED THE CENTERLINE OF OLD CRAWFORD ROAD BY HOLDING A RECORD RADIUS PER (R6) AND TANGENT TO ESTABLISHMENT NOTES **C** AND **A**
- J** ESTABLISHED THE W'LY RIGHT OF WAY OF CRAWFORD CANYON ROAD. BY HOLDING RECORD DIMENSIONS PARALLEL WITH ESTABLISHMENT **A** PER (R14).
- K** ESTABLISHED THE NW'LY RIGHT OF WAY OF OLD CRAWFORD ROAD. BY HOLDING RECORD DIMENSIONS PARALLEL WITH ESTABLISHMENT NOTES **I**, **H**, **E** AND **D** PER (R14).
- L** ESTABLISHED THE SW'LY RIGHT OF WAY OF OLD CRAWFORD ROAD. BY HOLDING RECORD DIMENSIONS PARALLEL WITH ESTABLISHMENT NOTES **H**, **E** AND **D** PER (R14).
- M** ESTABLISHED BY HOLDING A RECORD DISTANCE PER (R20) SW'LY FROM MONUMENT **[10]** ALONG LINE ESTABLISHMENT **E**
- N** ESTABLISHED THE POINT OF BEGINNING FOR THE COURSE DESCRIBED IN (R20) AS BEING THE INTERSECTION OF ESTABLISHMENT **K** WITH A LINE THAT IS PERPENDICULAR TO, & 30' NW'LY OF ESTABLISHMENT NOTE **M** PER (R20).
- O** ESTABLISHED THE NW'LY POINT OF THE COURSE DESCRIBED IN (R20) BY HOLDING A RECORD DISTANCE SW'LY FROM BC ESTABLISHMENT NOTE **K** ALONG LINE ESTABLISHMENT NOTE **K** PER (R20).
- P** ESTABLISHED THE N'LY RIGHT OF WAY OF NEWPORT BLVD. BY HOLDING RECORD DIMENSIONS PARALLEL WITH ESTABLISHMENT **E** PER (R20).
- Q** ESTABLISHED THE SW'LY LINE OF THE COURSE DESCRIBED IN (R20) BY HOLDING A LINE BETWEEN ESTABLISHMENT NOTES **P** AND **O** RADIAL TO CURVE ESTABLISHMENT NOTE **P** PER (R20).
- R** ESTABLISHED THE BC COURSE DESCRIBED IN (R20) BY HOLDING RECORD ANGLE, DISTANCE, AND CURVATURE INFORMATION PER (R20) SW'LY FROM BC ESTABLISHMENT NOTE **O**
- S** ESTABLISHED THE N'LY RIGHT OF WAY OF NEWPORT BLVD. BY HOLDING RECORD DIMENSIONS PARALLEL WITH ESTABLISHMENT **E** PER (R1).
- T** ESTABLISHED A PORTION OF THE COURSE DESCRIBED IN (R20) HOLDING RECORD ANGLE, DISTANCE, AND CURVATURE INFORMATION PER (R20) IN BETWEEN ESTABLISHMENT NOTES **R** AND **S**
- U** ESTABLISHED THE SE'LY CORNER OF THE COURSE DESCRIBED IN (R19) BY HOLDING RECORD ANGLE, DISTANCE, AND CURVATURE INFORMATION PER (R5) NE'LY FROM THE INTERSECTION BETWEEN THE ESTABLISHMENT NOTES **T** AND **S** ALONG LINE ESTABLISHMENT NOTE **S**
- V** ESTABLISHED THE SE'LY LINE OF PARCEL 3 DESCRIBED IN (R5) BY HOLDING A LINE BETWEEN MONUMENT **[12]** AND ESTABLISHMENT NOTE **U** PER (R5).
- W** ESTABLISHED THE W'LY RIGHT OF WAY OF CRAWFORD CANYON RD. BY HOLDING RECORD DIMENSIONS PARALLEL WITH ESTABLISHMENT **A** PER (R1).
- X** ESTABLISHED THE E'LY RIGHT OF WAY OF CRAWFORD CANYON RD. BY HOLDING RECORD DIMENSIONS PARALLEL WITH ESTABLISHMENT **A** PER (R1).
- Y** ESTABLISHED THE SW'LY LINE OF LOT 1 DESCRIBED IN (R4) BY INTERSECTION BETWEEN ESTABLISHMENT NOTES **U** AND **X** PER (R4).
- Z** ESTABLISHED A PORTION OF THE E'LY RIGHT OF WAY OF CRAWFORD CANYON RD. DEDICATED PER (R4) BY HOLDING RECORD DISTANCES NW'LY FROM ESTABLISHMENT **Y** ALONG ESTABLISHMENT **X** PER (R4).
- AA** ESTABLISHED THE SW'LY LINE OF PARCEL 1 PER (R8) BY HOLDING A LINE BETWEEN MONUMENT NOTES **[22]** AND **[23]**
- AB** ESTABLISHED THE CENTERLINE OF CRAWFORD CANYON ROAD BY HOLDING A LINE NW'LY FROM MONUMENT **[9]** AND PARALLEL WITH & 30' SW'LY FROM LINE ESTABLISHMENT NOTE **A**
- AC** ESTABLISHED THE CENTERLINE OF CRAWFORD CANYON RD. BY HOLDING A RECORD RADIUS PER (R11) AND TANGENT TO ESTABLISHMENT NOTES **A** AND **AB**
- AD** ESTABLISHED THE CENTERLINE OF COUNTRY HAVEN LN. BY HOLDING A LINE BETWEEN MONUMENT NOTES **[23]** AND **[26]**
- AE** ESTABLISHED THE CENTERLINE OF COUNTRY HAVEN LN. BY HOLDING A LINE BETWEEN MONUMENT NOTES **[24]** AND **[23]**

ESTABLISHMENT NOTES

- AF** ESTABLISHED THE CENTERLINE OF COUNTRY HAVEN LN. BY HOLDING A RECORD ANGLE NE'LY FROM MONUMENT **[24]** PER (R7).
- AG** ESTABLISHED THE CENTERLINE OF COUNTRY HAVEN LN. BY HOLDING A RECORD RADIUS PER (R13) AND TANGENT TO ESTABLISHMENT NOTES **AF** AND **AB**
- AH** ESTABLISHED THE CENTERLINE OF DANIGER RD. BY HOLDING A LINE BETWEEN MONUMENTS **[27]** AND **[29]**
- AI** S.F.N. ESTABLISHED THE CENTERLINE INTERSECTION OF CRAWFORD ROAD AND DANIGER RD. BY INTERSECTION HOLDING LINE ESTABLISHMENTS **AE** AND **AG**
- AJ** S.F.N. ESTABLISHED THE CENTERLINE INTERSECTION OF CRAWFORD ROAD AND COUNTRY HAVEN LN. BY INTERSECTION BETWEEN ESTABLISHMENT NOTES **AG** AND
- AK** ESTABLISHED THE PI OF CRAWFORD CANYON ROAD BY HOLDING RECORD DISTANCE NW'LY FROM ESTABLISHMENT NOTE **A** ALONG LINE ESTABLISHMENT NOTE **AG** PER (R12).
- AL** ESTABLISHED THE CENTERLINE OF HINTON WAY BY HOLDING RECORD ANGLES, DISTANCES & CURVATURE INFORMATION PER (R16) BETWEEN MONUMENTS **[50]**, **[51]**, **[52]** AND **[53]**
- AM** ESTABLISHED THE CENTERLINE BC OF HINTON WAY BY HOLDING RECORD ANGLES, DISTANCES & CURVATURE INFORMATION PER (R16) NE'LY FROM MONUMENT **[52]** ALONG LINE ESTABLISHMENT NOTE **AI**
- AN** ESTABLISHED THE CENTERLINE OF HINTON WAY BY HOLDING A RECORD DISTANCE PER (R16) AND TANGENT TO ESTABLISHMENT NOTE **AM**
- AO** S.F.N. ESTABLISHED THE CENTERLINE INTERSECTION OF CRAWFORD CANYON ROAD AND HINTON WAY BY HOLDING A RECORD DISTANCE PER (R16) ALONG LINE ESTABLISHMENT NOTE **AN**
- AP** S.F.N. ESTABLISHED A POINT ON CENTERLINE OF CRAWFORD CANYON RD. BY TIES PER (R29) FROM MONUMENTS **[54]**, **[53]** AND **[56]**
- AQ** ESTABLISHED THE CENTERLINE OF CRAWFORD CANYON ROAD BY HOLDING A LINE BETWEEN ESTABLISHMENT NOTES **AO** AND **AP**
- AR** ESTABLISHED THE CENTERLINE PI OF CRAWFORD CANYON ROAD BY PROLONGATION LINE ESTABLISHMENT **AO** HOLDING A RECORD DISTANCE SE'LY FROM ESTABLISHMENT NOTE **AP**
- AS** ESTABLISHED THE CENTERLINE OF CRAWFORD CANYON ROAD BY HOLDING A LINE BETWEEN ESTABLISHMENT NOTES **AO** AND **AP**
- AT** ESTABLISHED THE SW'LY RIGHT OF WAY OF CRAWFORD CANYON RD. BY HOLDING RECORD DIMENSIONS PARALLEL WITH ESTABLISHMENT **AS** PER (R14).
- AU** ESTABLISHED THE NE'LY RIGHT OF WAY OF CRAWFORD CANYON RD. BY HOLDING RECORD DIMENSIONS PARALLEL WITH ESTABLISHMENT **AS** PER (R11).
- AV** ESTABLISHED THE NE'LY ULTIMATE RIGHT OF WAY OF CRAWFORD CANYON RD. AS SHOWN PER (R8) BY HOLDING RECORD DIMENSIONS PARALLEL WITH ESTABLISHMENT **AS** PER (R8).
- AW** ESTABLISHED THE SE'LY RIGHT OF WAY OF COUNTRY HAVEN LN. BY HOLDING RECORD DIMENSIONS PARALLEL WITH ESTABLISHMENT NOTES **AG**, **AE** AND **AP** PER (R13).
- AX** ESTABLISHED THE NW'LY RIGHT OF WAY OF DANIGER RD. BY HOLDING RECORD DIMENSIONS PARALLEL WITH ESTABLISHMENT **AT** PER (R11).
- AY** ESTABLISHED THE SE'LY RIGHT OF WAY OF DANIGER RD. BY HOLDING RECORD DIMENSIONS PARALLEL WITH ESTABLISHMENT **AT** PER (R11).
- AZ** ESTABLISHED THE SW'LY RIGHT OF WAY OF CRAWFORD CANYON RD. BY HOLDING RECORD DIMENSIONS PARALLEL WITH ESTABLISHMENT **AS** PER (R14).
- BA** ESTABLISHED THE NW'LY RIGHT OF WAY OF COUNTRY HAVEN LN. BY HOLDING RECORD DIMENSIONS PARALLEL WITH ESTABLISHMENT NOTES **AF**, **AO** AND **AE** PER (R13).
- BB** ESTABLISHED THE NW'LY RIGHT OF WAY OF COUNTRY HAVEN LN. BY HOLDING RECORD ANGLES, DISTANCES & CURVATURE INFORMATION PER (R13) NW'LY FROM ESTABLISHMENT NOTE **EA**
- BC** ESTABLISHED THE INTERSECTION BETWEEN THE SE'LY LINE OF LOT 13 DESCRIBED IN (R25) AND THE CENTERLINE OF CRAWFORD CANYON RD. BY HOLDING A RECORD DISTANCE PER (R25) SE'LY FROM ESTABLISHMENT NOTE **A** ALONG LINE ESTABLISHMENT NOTE **AE**
- BD** ESTABLISHED THE SE'LY LINE OF LOT 13 DESCRIBED IN (R25) BY HOLDING A LINE BETWEEN ESTABLISHMENT NOTES **EB** AND **BB**
- BE** ESTABLISHED PARCEL 2 DESCRIBED IN (R31). BY HOLDING RECORD DIMENSIONS PARALLEL WITH ESTABLISHMENTS **AE**, **AC**, **I**, **H** AND **E** PER (R31).
- BF** ESTABLISHED THE INTERSECTION OF LINE ESTABLISHMENT **AE** AND THE N'LY PROLONGATION OF LINE ESTABLISHMENT **AY** BY INTERSECTION.
- BG** ESTABLISHED THE INTERSECTION BETWEEN THE NE'LY LINE OF PARCEL 1 DESCRIBED IN (R12) AND THE CENTERLINE OF CRAWFORD CANYON RD. BY HOLDING A RECORD DISTANCE PER (R12) SE'LY FROM ESTABLISHMENT NOTE **A** ALONG LINE ESTABLISHMENT NOTE **AE**
- BH** ESTABLISHED THE SW'LY CORNER OF PARCEL 1 PER (R12) BY HOLDING A RECORD DISTANCE SW'LY FROM ESTABLISHMENT NOTE **BF** AND PARALLEL WITH ESTABLISHMENT NOTE **AT**
- BI** ESTABLISHED THE SE'LY CORNER OF PARCEL 1 PER (R12) BY HOLDING A RECORD DISTANCE SW'LY FROM ESTABLISHMENT NOTE **BG** AND A RECORD DISTANCE SE'LY FROM ESTABLISHMENT NOTE **BH**
- BJ** ESTABLISHED THE SE'LY LINE OF PARCEL 1 PER (R12) BY HOLDING A RECORD DISTANCE ALONG THE LINE BETWEEN ESTABLISHMENT NOTES **BG** AND **B**

ESTABLISHMENT NOTES

- BK** ESTABLISHED THE NE'LY OF PARCEL 1 PER (R12) BY HOLDING A RECORD RADIUS PER (R11) AND TANGENT TO ESTABLISHMENT NOTES **EB** AND **BA**
- BL** ESTABLISHED THE NE'LY OF PARCEL 1 PER (R12) BY HOLDING A LINE PARALLEL WITH ESTABLISHMENT NOTE **AF** NE'LY FROM BC ESTABLISHMENT NOTE **EB**
- BM** ESTABLISHED THE SW'LY RIGHT OF WAY OF CRAWFORD CANYON RD. BY HOLDING RECORD DIMENSIONS PARALLEL WITH ESTABLISHMENT **AB** PER (R12).
- BN** ESTABLISHED THE SW'LY RIGHT OF WAY OF CRAWFORD CANYON RD. BY HOLDING RECORD DIMENSIONS PARALLEL WITH ESTABLISHMENT **AS** PER (R14).
- BO** ESTABLISHED THE INTERSECTION BETWEEN THE NW'LY LINE OF 40' EASEMENT DESCRIBED IN (R33) AND THE CENTERLINE OF CRAWFORD CANYON RD. BY HOLDING A RECORD DISTANCE PER (R32) SE'LY FROM ESTABLISHMENT NOTE **EB** ALONG LINE ESTABLISHMENT NOTE **AB**
- BP** ESTABLISHED THE NW'LY LINE OF 40' EASEMENT DESCRIBED IN (R33) BY HOLDING A RECORD DISTANCE PER (R32) PARALLEL WITH ESTABLISHMENT NOTE **AF** SW'LY FROM ESTABLISHMENT NOTE **EO**
- BQ** ESTABLISHED THE INTERSECTION BETWEEN THE NEW AND OLD CENTERLINES OF NEWPORT BLVD. BY HOLDING RECORD ANGLE, DISTANCE, AND CURVATURE INFORMATION NE'LY FROM EC ESTABLISHMENT NOTE **C** ALONG LINE ESTABLISHMENT **B**
- BR** ESTABLISHED THE NEW CENTERLINE OF NEWPORT BLVD. BY HOLDING A RECORD ANGLE, DISTANCE, AND CURVATURE INFORMATION SW'LY FROM EC ESTABLISHMENT NOTE **BM** IN BETWEEN EC ESTABLISHMENT NOTE **BM** AND MONUMENT **[1]**
- BS** ESTABLISHED PARCEL 156.1 PER (R36), PARCEL 157.1 PER (R37) AND PARCEL 158.1 PER (R38). BY HOLDING RECORD DIMENSIONS PARALLEL WITH ESTABLISHMENT **BR** PER (R1).
- BT** ESTABLISHED PARCEL 159.1 PER (R39) BY HOLDING RECORD ANGLES, DISTANCES & CURVATURE INFORMATION PER (R1) TO THE INTERSECTION WITH LINE ESTABLISHMENT **BY**
- BU** ESTABLISHED THE SE'LY CORNER OF PARCEL 15 PER (R3) BY HOLDING THE INTERSECTION BETWEEN LINE ESTABLISHMENTS **S** AND **K**
- BV** ESTABLISHED THE NE'LY CORNER OF PARCEL 15 PER (R3) BY HOLDING RECORD ANGLES, DISTANCES & CURVATURE INFORMATION PER (R1) NE'LY FROM ESTABLISHMENT NOTE **BU** ALONG ESTABLISHMENT NOTE **K**
- BW** ESTABLISHED THE CENTERLINE OF MARCY RANCH DR. BY HOLDING A LINE BETWEEN MONUMENTS **[38]** AND **[39]**
- BX** ESTABLISHED THE CENTERLINE OF MARCY RANCH DR. BY HOLDING RECORD ANGLES, DISTANCES & CURVATURE INFORMATION PER (R1) NE'LY FROM BC ESTABLISHMENT NOTE **BY**
- BY** ESTABLISHED THE SE'LY RIGHT OF WAY OF MARCY RANCH DR. BY HOLDING RECORD DIMENSIONS PARALLEL WITH ESTABLISHMENT **BU** PER (R3).
- BZ** ESTABLISHED THE N'LY LINE OF PARCEL 15 PER (R3) BY HOLDING A LINE BETWEEN ESTABLISHMENT NOTE **BY** AND MONUMENT **[40]**
- CA** ESTABLISHED THE S'LY RIGHT OF WAY OF NEWPORT BLVD. BY HOLDING RECORD DIMENSIONS PARALLEL WITH ESTABLISHMENT **B** PER (R40).
- CB** ESTABLISHED THE INTERSECTION OF CENTERLINE OF CRAWFORD CANYON RD. AND THE EXTENSION OF THE NE'LY LINE OF LOT 27 OF (R40) BY HOLDING RECORD ANGLES, DISTANCES & CURVATURE INFORMATION PER (R1) NW'LY FROM MONUMENT **[13]** ALONG ESTABLISHMENT **B**
- CC** ESTABLISHED THE NE'LY CORNER OF LOT 27 OF (R40) BY HOLDING RECORD DISTANCE PER (R1) SW'LY FROM ESTABLISHMENT NOTE **CA** AND INTERSECTING ESTABLISHMENT NOTE **CA**
- CD** ESTABLISHED THE NW'LY CORNER OF LOT 15 OF (R40) BY HOLDING A CALCULATED RECORD DISTANCE OF 50.00' PER (R40) SE'LY FROM MONUMENT **[4]** RADIAL TO ESTABLISHMENT **B** AND INTERSECTING ESTABLISHMENT **CA**
- CE** ESTABLISHED THE NW'LY LOT CORNERS 15 TO 27 OF (R40) BY PROPORTION BETWEEN ESTABLISHMENT NOTES **CC** AND **CD** , PER (R1).

MONUMENT NOTES

- [1]** FOUND 2 1/2" PUNCHED BRASS DISK STAMPED "OCS", PER (R1), DOWN 0.8' IN O.C.S. WELL MONUMENT, ACCEPTED AS A CENTERLINE EC OF NEWPORT BLVD.
- [2]** FOUND 2" PUNCHED BRASS DISK STAMPED "OCS", PER (R1), DOWN 0.8' IN O.C.S. WELL MONUMENT, ACCEPTED AS CENTERLINE BC OF NEWPORT BLVD.
- [3]** FOUND 2" PUNCHED BRASS DISK STAMPED "OCS", PER (R1), DOWN 0.8' IN O.C.S. WELL MONUMENT, ACCEPTED AS CENTERLINE PCC OF NEWPORT BLVD.
- [4]** FOUND 2" PUNCHED BRASS DISK STAMPED "OCS", PER (R1), DOWN 0.5' IN O.C.S. WELL MONUMENT, ACCEPTED AS CENTERLINE EC OF NEWPORT BLVD.
- [5]** FOUND PUNCHED SPIKE AND 1 1/4" BRASS TAG STAMPED "OCS", PER (R1), FLUSH IN AC, ACCEPTED AS CENTERLINE PCC OF NEWPORT BLVD.
- [6]** FOUND 2" PUNCHED BRASS DISK STAMPED "OCS", PER (R1), DOWN 0.8' IN O.C.S. WELL MONUMENT, ACCEPTED AS THE CENTERLINE INTERSECTION OF NEWPORT BLVD. AND CRAWFORD CANYON RD.
- [7]** FOUND PUNCHED SPIKE AND 1 1/2" WASHER STAMPED "RCE 15446", PER (R4), DOWN 0.2' IN AC, ACCEPTED AS A POINT ON CENTERLINE OF CRAWFORD CANYON RD.
- [8]** FOUND PUNCHED SPIKE AND 1 1/2" WASHER STAMPED "RCE 15446", PER (R4), DOWN 0.2' IN AC, ACCEPTED AS A POINT ON CENTERLINE OF CRAWFORD CANYON RD.
- [9]** FOUND 2 1/4" BRASS DISK STAMPED "RCE 20106", PER (R1), DOWN 1.9' IN O.C.S. WELL MONUMENT, ACCEPTED AS A PI CENTERLINE OF CRAWFORD CANYON RD.
- [10]** FOUND 3/4" IRON PIPE, NAIL AND WASHER, PER (R6), DOWN 1.6' IN AC, ACCEPTED AS A PI CENTERLINE OF OLD CRAWFORD RD.
- [11]** FOUND 3/4" IRON PIPE, NAIL AND WASHER, PER (R6), DOWN 2.3' IN AC, ACCEPTED AS A PI CENTERLINE OF OLD CRAWFORD RD.
- [12]** FOUND 1" IRON PIPE AND PLASTIC PLUG, PER (R1), DOWN 0.6' IN DIRT, ACCEPTED AS THE SW'LY CORNER OF LOT 1 PER (R4).
- [13]** FOUND 2" PUNCHED BRASS DISK STAMPED "OCS", PER (R1), DOWN 0.5' IN O.C.S. WELL MONUMENT, ACCEPTED AS CENTERLINE EC OF NEWPORT BLVD.
- [14]** FOUND 2" PUNCHED BRASS DISK STAMPED "OCS", PER (R1), DOWN 0.5' IN O.C.S. WELL MONUMENT, ACCEPTED AS A POINT ON CENTERLINE OF NEWPORT BLVD.
- [15]** FOUND 1" IRON PIPE AND PLASTIC CAP STAMPED "15446", PER (R4), DOWN 0.65' IN DIRT, S85°28'17"W 0.06' FROM ANGLE POINT E'LY RIGHT OF WAY OF CRAWFORD RD.
- [16]** FOUND 3/4" IRON PIPE, LEAD, TACK AND TAG STAMPED "15446", PER (R4), FLUSH IN AC, S63°09'30"W 0.06' FROM E'LY RIGHT OF WAY OF CRAWFORD RD.
- [17]** FOUND 1" IRON PIPE AND PLASTIC CAP STAMPED "15446", PER (R4), DOWN 0.25' IN DIRT, S30°38'55"W 0.10' FROM E'LY RIGHT OF WAY OF CRAWFORD RD.
- [18]** FOUND 1" IRON PIPE AND 3/4" BRASS TAG STAMPED "14814", PER (R3), DOWN 0.30' IN DIRT, S62°52'53"E 0.32' FROM W'LY RIGHT OF WAY OF OLD CRAWFORD RD.
- [19]** FOUND 1" IRON PIPE AND 3/4" BRASS TAG STAMPED "14814", PER (R3), DOWN 0.30' IN DIRT, S44°25'06"E 0.44' FROM W'LY RIGHT OF WAY OF OLD CRAWFORD RD.
- [20]** FOUND 1" IRON PIPE AND 3/4" BRASS TAG ILLEGIBALE, PER (R3), DOWN 0.30' IN DIRT, S69°44'21"E 0.38' FROM W'LY RIGHT OF WAY OF OLD CRAWFORD RD.
- [21]** FOUND 1" IRON PIPE AND 3/4" BRASS TAG STAMPED "1481.", PER (R3), DOWN 0.30' IN DIRT, S69°44'21"E 0.36' FROM W'LY RIGHT OF WAY OF OLD CRAWFORD RD.
- [22]** FOUND 1" IRON PIPE, TACK AND TAG STAMPED "2210", PER (R23), DOWN 0.5' IN DIRT, ACCEPTED AS THE SE'LY PROPERTY CORNER OF PARCEL 2 AND THE NE'LY RIGHT OF WAY OF CRAWFORD CANYON RD. PER (R8).
- [23]** FOUND 1" IRON PIPE, TACK AND TAG STAMPED "RCE 12971", PER (R8), DOWN 1.9 IN DIRT, ACCEPTED AS A PI NE'LY RIGHT OF WAY OF CRAWFORD CANYON RD. PER (R8).
- [24]** FOUND PK. NAIL, PER (R26 & R27), FLUSH IN AC, ACCEPTED AS CENTERLINE PI OF COUNTRY HAVEN LN.
- [25]** FOUND PK. NAIL, PER (R26 & R27), DOWN 0.05' IN AC, ACCEPTED AS CENTERLINE PI OF COUNTRY HAVEN LN.
- [26]** FOUND 1 1/2" HOLLOW IRON PIPE, FLUSH IN AC, ACCEPTED AS A POINT ON CENTERLINE OF COUNTRY HAVEN LN.
- [27]** FOUND 2" PUNCHED BRASS DISK STAMPED "RCE20106", PER (R11), DOWN 2.1' IN O.C.S. WELL MONUMENT, ACCEPTED AS THE CENTERLINE INTERSECTION OF DANIGER RD. AND CORALWOOD DR.
- [28]** FOUND 2" PUNCHED BRASS DISK STAMPED "RCE20106", PER (R11), DOWN 2.1' IN O.C.S. WELL MONUMENT, ACCEPTED AS THE CENTERLINE INTERSECTION OF DANIGER RD. AND HIGHCREST ST.
- [29]** FOUND GEAR SPIKE AND 1 3/4" WASHER STAMPED "LS7177", PER (R22), DOWN 0.25' IN AC, ACCEPTED AS A POINT ON CENTERLINE OF DANIGER RD.
- [30]** FOUND SPIKE AND 1 1/2" WASHER STAMPED "LS 3120", PER (R16), DOWN 0.25' IN AC, ACCEPTED AS THE CENTERLINE BC OF HINTON WAY.
- [31]** FOUND SPIKE AND 1 1/2" WASHER STAMPED "LS 3120", PER (R16), DOWN 0.25' IN AC, ACCEPTED AS THE CENTERLINE EC OF HINTON WAY.
- [32]** FOUND SPIKE AND 1 1/2" WASHER STAMPED "LS 3120", PER (R16), DOWN 0.25' IN AC, ACCEPTED AS THE CENTERLINE BC OF HINTON WAY.
- [33]** FOUND SPIKE AND 1 1/2" WASHER STAMPED "LS 3120", PER (R16), DOWN 0.25' IN AC, N34°13'52"W 0.07' FROM CENTERLINE EC OF HINTON WAY.
- [34]** FOUND 2" IRON PIPE AND PLASTIC CAP STAMPED "RCE28918", PER (R25), DOWN 0.5' IN DIRT, ACCEPTED AS A TIE PER (29).
- [35]** FOUND PK NAIL W/TAG, STAMPED "O.C.S. TIE", FLUSH IN CONCRETE CURB, ACCEPTED AS A TIE PER (R29)
- [36]** FOUND PK NAIL W/TAG, STAMPED "O.C.S. TIE", FLUSH IN CONCRETE CURB, ACCEPTED AS A TIE PER (R29)
- [37]** FOUND 3/4" IRON PIPE, AND NAIL, NO REFERENCE, DOWN 2' IN AC, NOT ACCEPTED AS A PI CENTERLINE OF OLD CRAWFORD RD.

MONUMENT NOTES

- [38]** FOUND 3 1/2" PUNCHED BRASS DISK STAMPED "RCE 14814", PER (R3), DOWN 1.6' IN O.C.S. WELL MONUMENT, ACCEPTED AS THE CENTERLINE INTERSECTION OF MARCY DR. AND MARCY RANCH RD.
- [39]** FOUND 3 1/2" PUNCHED ALUMINUM CAP STAMPED "RCE 14814", PER (R3), DOWN 1.6' IN O.C.S. WELL MONUMENT, ACCEPTED AS THE CENTERLINE EC OF MARCY RANCH RD.
- [40]** FOUND 3/4" LEAD, TACK AND TAG STAMPED "RCE 14814" PER (R3), FLUSH IN CONCRETE, ACCEPTED AS THE NW'LY CORNER OF LOT 16 PER (R1) AND THE E'LY RIGHT OF WAY OF MARCY RANCH ROAD.

COUNTY OF ORANGE OC PUBLIC WORKS OC SURVEY/FIELD SERVICES/BOUNDARY ANALYSIS & MAPPING			
CRAWFORD CANYON ROAD SIDEWALK EXTENSION PHASE I			
2 BOUNDARY MAP			
PROJECT LIMITS: FROM NEWPORT BLVD. TO 100' NE'LY OF COUNTRY HAVEN LN. ALONG CRAWFORD CANYON ROAD AND FROM 140' NE'LY OF HYDE PARK DR. TO CRAWFORD CANYON RD. ALONG NEWPORT BLVD.			
DATE OF SURVEY: 07/08/2020	BY: J. RUSSO & PARTY	SHEET NO. 2 of 12	
MAPPING	BY: H. AFTIM		
OFFICE CHECK	BY: M. KUBISTY, PLS		
FIELD CHECK	BY: J. RUSSO & PARTY		
SCALE: 1"=50'	W.O. #EQ19817P	FILE #1920PW-IND029	
FILE: CRAWFORD CANYON ROAD_SIDEWALK EXTENSION_BOUNDARY_2022.DWG			

REFERENCES

- (R1) = RECORD OF SURVEY RSB 194/1–16
(R2) = TRACT NO. 8489, M.M. 671/9–11
(R3) = TRACT NO. 10570, M.M. 464/32–35
(R4) = TRACT NO. 11497, M.M. 537/34–39
(R5) = PARCEL MAP P.M.B. 132/46–49
(R6) = SM 71–7B
(R7) = TRACT NO. 4130, M.M. 180/32–33
(R8) = PARCEL MAP P.M.B. 39/25
(R9) = PARCEL MAP P.M.B. 98/11
(R10) = CSTB 138/47–52
(R11) = TRACT NO. 7723, M.M. 335/48–50
(R12) = PARCEL MAP P.M.B. 356/8–12
(R13) = TRACT NO. 4130, M.M. 180/32–33
(R14) = TRACT NO. 732, M.M. 31/37–38
(R15) = CORNER RECORD, C.R. 2019–1907
(R16) = TRACT NO. 6208, M.M. 378/1–2
(R17) = RECORD OF SURVEY RSB 114/28
(R18) = RECORD PER INST. 13486, PAGE 1458 O.R.
(R19) = RECORD PER INST. NO. 1994–0389373 O.R.
(R20) = RECORD PER INST. NO. 1996–0346961 O.R.
(R21) = O.C.S. ALIGNMENT NOTE A/NE/IRV, PG. 1213–1220
(R22) = CORNER RECORD, C.R. 2012–2280
(R23) = RECORD OF SURVEY RSB 20/11
(R24) = PARCEL MAP P.M.B. 103/7–8
(R25) = RECORD OF SURVEY RSB 233/28
(R26) = O.C.S. ALIGNMENT NOTE A/4–9/2235–2247
(R27) = O.C.S. ALIGNMENT NOTE A/4–9/547–553
(R28) = O.C.S. ALIGNMENT NOTE A/4–9/979–992
(R29) = CORNER RECORD, C.R. 2010–0786
(R30) = RECORD PER INST. NO. 2011–603896 O.R.
(R31) = RECORD PER INST. BOOK 2658, PAGE 580 O.R.
(R32) = PARCEL MAP P.M.B. 30/38–39
(R33) = RECORD PER INST. BOOK 9068, PAGE 750 O.R.
(R34) = RECORD OF SURVEY RSB 152/21–26
(R35) = TRACT NO. 3556, M.M. 374/33–34
(R36) = RECORD PER INST. NO. 1991–105258 O.R.
(R37) = RECORD PER INST. NO. 1994–0322838 O.R.
(R38) = RECORD PER INST. NO. 1991–238100 O.R.
(R39) = RECORD PER INST. NO. 1991–670385 O.R.
(R40) = TRACT NO. 5646, M.M. 315/29–31
(R41) = RECORD PER INST. NO. 1990–305182 O.R.
(R42) = RECORD PER INST. NO. 1992–178312 O.R.
(R43) = RECORD PER INST. NO. 1990–211104 O.R.
(R44) = RECORD PER INST. NO. 1991–021387 O.R.
(R45) = RECORD PER INST. NO. 1992–400700 O.R.
(R46) = RECORD PER INST. NO. 1990–143429 O.R.
(R47) = RECORD PER INST. BOOK 13215, PAGE 531 O.R.
(R48) = RECORD PER INST. NO. 1990–415100 O.R.

LINE TABLE			
LINE #	BEARING	MEASURED DISTANCE	RECORD DISTANCE
L1	N42°32'57"E	29.24'	(29.25' R1)
L2	N67°28'06"W	347.94'	(347.94' R1)
L3	N16°34'34"E	121.54'	(121.74' R2)
L4	N16°34'34"W	370.36'	(369.94' R4)
L5	N16°34'32"W	17.37'	— — — —
L6	N16°34'34"W	74.30'	— — — —
L7	N16°33'53"W	91.67'	(91.69' R4)
L8	N16°34'34"W	254.67'	— — — —
L9	S16°34'34"E	54.50'	— — — —
L10	S16°34'31"E	309.16'	(309.14' R4)
L11	N06°50'13"E	103.67'	(103.66' R5)
L12	N06°50'13"E	71.80'	(71.79' R5)
L13	S06°50'13"W	175.48'	(175.45' CR20)
L14	S46°54'40"W	71.80'	(71.79' R5)
L15	S46°54'40"W	65.94'	(65.94' R20)
L16	S46°54'40"W	356.45'	(356.58' R20)
L17	S46°54'40"W	422.39'	(422.54' R1)
L18	S46°54'40"W	77.30'	(77.15' R6)
L19	S20°15'39"W	77.30'	(77.15' R6)
L20	N20°15'39"E	75.24'	— — — —

LINE TABLE			
LINE #	BEARING	MEASURED DISTANCE	RECORD DISTANCE
L21	N20°15'39"E	129.49'	— — — —
L22	N20°15'39"E	66.03'	(66.57' R3)
L23	N20°15'38"E	204.73'	(204.38' R3)
L24	N05°30'19"E	66.03'	(66.57' R3)
L25	N05°30'19"E	93.65'	(93.01' CR1)
L26	S05°30'34"W	159.67'	(159.58' CR1)
L27	N20°15'39"E	62.81'	(62.81' R20)
L28	N47°13'58"W	43.00'	— — — —
L29	S47°14'02"E	75.47'	(75.16' R20)
L30	S30°25'56"W	43.44'	(44.52' R5)
L31	S30°25'56"W	13.67'	(13.60' R5)
L32	S30°25'56"W	41.01'	(40.80' R5)
L33	S30°25'56"W	54.69'	(54.47' R1)
L34	N30°25'56"E	109.37'	(108.82' R5)
L35	N16°34'34"W	892.73'	(892.76' R1)
L36	S16°34'34"E	272.47'	(272.55' R20)
L37	S46°54'40"W	65.94'	(65.94' R5)
L38	S46°54'40"W	356.45'	(356.58' R20)
L39	N48°54'56"E	54.56'	(54.56' R1&R19)
L40	N55°42'56"E	58.50'	(58.50' R1&R19)

LINE TABLE			
LINE #	BEARING	MEASURED DISTANCE	RECORD DISTANCE
L41	N63°38'56"E	103.35'	(103.35' R1)
L42	N61°35'56"E	105.35'	(105.35' R1)
L43	N71°29'56"E	108.50'	(108.50' R1)
L44	N67°34'56"E	32.00'	(32.00' R1)
L45	N26°25'22"E	18.85'	(16.94' R1)
L46	S05°15'58"E	101.98'	(101.98' R18)
L47	S16°34'34"E	50.00'	(50.00' R18)
L48	S38°22'46"E	53.85'	(53.85' R18)
L49	S31°09'08"E	33.88'	(33.90' R1)
L50	N16°34'31"W	249.93'	(250.96' R1)
L51	S47°03'46"E	54.50'	(54.49' R11)
L52	S47°03'46"E	197.98'	(198.03' R11)
L53	N72°36'40"W	23.19'	(23.29' R13)
L54	S47°03'46"E	252.48'	(252.52' R11)
L55	N47°03'46"W	170.35'	(170.14" R12)
L56	N47°03'46"W	64.09'	(64.31' R12)
L57	N28°13'26"W	72.93'	(72.93' R10)
L58	N28°13'26"W	70.29'	(67.40' R16)
L59	N28°13'23"W	143.21'	(143.42' R16)
L60	N61°55'20"E	67.00'	(67.00' R16)

LINE TABLE			
LINE #	BEARING	MEASURED DISTANCE	RECORD DISTANCE
L61	N47°51'12"E	31.25'	(31.25' R16)
L62	N47°03'46"W	214.02'	(213.68' R8)
L63	N35°54'41"E	106.37'	(106.35' R13)
L64	N35°54'41"E	38.16'	(38.16' R13)
L65	S35°54'41"W	144.52'	(144.51' R13)
L66	S72°34'59"E	38.16'	(38.16' R13)
L67	S72°34'59"E	69.43'	(69.39' R13)
L68	N72°34'59"W	107.59'	(107.55' R13)
L69	N47°03'44"W	26.89'	(26.89' R13)
L70	S35°42'25"W	393.78'	(393.90' R11)
L71	S35°42'25"W	657.21'	(657.50' R11)
L72	S35°42'25"W	355.68'	(355.72' CR11)
L73	S35°42'25"W	1406.67'	(1407.12' CR11)
L74	S17°27'53"W	19.58'	(19.59' R1)
L75	N47°03'46"W	28.21'	(28.21' R12)
L76	N47°03'46"W	8.07'	(8.07' R12)
L77	N35°54'41"E	10.08'	(10.07' R12)
L78	N35°54'41"E	10.08'	(10.08' R12)
L79	S35°54'45"W	20.16'	(20.15' R12)
L80	S35°59'15"W	45.75'	(45.74' R12)

LINE TABLE			
LINE #	BEARING	MEASURED DISTANCE	RECORD DISTANCE
L81	S16°34'34"E	89.85'	(89.59' R9)
L82	S16°34'34"E	304.83'	(304.83' R4)
L83	N13°59'12"E	23.00'	(23.00' R4)
L84	N02°08'50"W	24.69'	(24.69' R4)
L85	N01°01'49"W	25.38'	(25.38' R4)
L86	N63°13'18"W	33.90'	(33.90' R4)
L87	S16°34'34"E	28.47'	(28.68' R4)
L88	N35°54'41"E	47.41'	(47.32' R13)
L89	N72°36'40"W	69.56'	(69.87' R25)
L90	S35°54'41"W	40.30'	(40.29' CR12)
L91	S35°59'15"W	90.36'	(90.37' CR12)
L92	S47°03'46"E	11.40'	(11.40' R25)
L93	S47°03'46"E	275.00'	(275.00' R32)
L94	N27°55°34"E	199.99'	(199.99' R1)
L95	N27°55°34"E	123.92'	(192.07' CR1)
L96	N27°55°34"E	144.88'	(144.91' CR1)
L97	N39°11'28"E	37.77'	(37.77' R38)
L98	N05°30'19"E	31.30'	(31.30' R1)
L99	S10°56'00"W	24.33'	(22.75' R38)
L100	S71°34'58"E	4.21'	(4.21' R38)

LINE TABLE			
LINE #	BEARING	MEASURED DISTANCE	RECORD DISTANCE
L101	N42°53'45"E	31.93'	(31.92' R29)
L102	N87°12'34"W	22.84'	(22.84' R29)
L103	S29°30'11"W	22.85'	(22.85' R29)
L104	S47°03'44"E	234.44'	(234'.41 R10)
L105	S35°54'44"W	254.88'	(254.88' R32)
L106	S25°30'11"W	9.12'	(9.12' R1)
L107	S25°30'11"W	50.62'	(50.62' R1)
L108	N71°11'02"E	15.80'	(15.70' R1)
L109	S66°45'23"W	17.31'	(17.31' R44)
L110	S83°38'40"E	31.50'	(31.38 R44)
L111	N89°29'17"E	38.89'	(38.85' R44)
L112	S22°16'14"W	10.38'	(10.38' R44)
L113	N83°03'09"E	48.00'	(48.00' R46)
L114	N88°40'13"E	25.06'	(25.06' R46)
L115	N83°10'43"E	10.00'	(10.00' R46)
L116	S06°49'17"E	3.95'	(3.95' R46)
L118	N67°17'20"E	28.14'	(28.14' R45)
L120	N67°18'22"E	39.77'	(39.81' R43)
L121	N79°23'22"E	57.80'	(57.80' R43)
L122	N79°23'54"E	16.20'	(16.25' R42)

CURVE TABLE						
CURVE #	DELTA	RADIUS	LENGTH	RECORD DELTA	RECORD RADIUS	RECORD LENGTH
C1	1°50'34"	999.97'	32.16'	(1°50'33" R1)	(1000.00' R1)	(32.16' R1)
C2	23°24'47"	500.32'	204.45'	(23°24'35" R5)	(500.34' R5)	(204.43' R5)
C3	40°04'27"	196.88'	137.70'	(40°04'34" R6)	(196.89' R6)	(137.72' R6)
C4	26°39'01"	326.37'	151.81'	(26°35'56" R5)	(326.38' R5)	(151.52' R5)
C5	14°45'20"	509.98'	131.34'	(14°52'26" R3)	(510.00' R3)	(132.39' R3)
C6	26°39'01"	356.37'	165.76'	(26°35'50" R20)	(356.38' R20)	(165.43' R20)
C7	7°18'35"	1079.97'	137.78'	(07°19'00" R20)	(1080.00' R20)	(137.91' R20)
C8	16°56'59"	50.00'	14.79'	— — — —	— — — —	— — — —
C9	3°38'34"	579.98'	36.87'	(3°37'20" R1)	(580.00' R1)	(36.67' R1)
C10	22°38'19"	1049.97'	414.86'	(22°36'30" R1)	(1050.00' R1)	(414.32' R1)
C11	26°46'10"	226.88'	106.00'	(26°45'39" R5)	(226.85' R5)	(105.95' R5)
C12	7°20'42"	296.37'	37.99'	(7°20'35" R5)	(296.38' R5)	(37.98' R5)
C13	116°51'29"	50.00'	101.97'	(115°37'22" R20)	(50.00' R20)	(100.90' R20)
C14	6°40'24"	50.00'	5.82'	(06°44'57" R19)	(50.00' R19)	(5.89' R19)
C15	13°17'51"	241.88'	56.14'	(13°45'22" R18)	(241.89' R18)	(58.08' R18)
C16	30°29'12"	199.99'	106.41'	(30°28'53" R11)	(200.00' R11)	(106.40' R11)
C17	71°30'20"	53.00'	66.14'	(71°30'20" R13)	(53.00' R13)	(66.14' R13)
C18	13°59'57"	150.00'	36.65'	(14°00'00" R16)	(150.00' R16)	(36.65' R16)
C19	6°42'58"	150.00'	17.58'	(6°42'17" R16)	(150.00' R16)	(17.55' R16)
C20	83°02'59"	45.16'	65.46'	(83°04'00" R12)	(45.16' R12)	(65.47' R12)

CURVE TABLE						
CURVE #	DELTA	RADIUS	LENGTH	RECORD DELTA	RECORD RADIUS	RECORD LENGTH
C21	81°05'09"	27.00'	38.21'	(81°04'56" R9)	(27.00' R9)	(38.21' R9)
C22	71°30'20"	25.00'	31.20'	(71°30'20" R13)	(25.00' R13)	(31.20' R13)
C23	82°58'25"	25.00'	36.20'	(83°03'55" R13)	(25.00' R13)	(36.24' R13)
C24	14°29'22"	1049.97'	265.53'	(14°29'22" R9)	(1050.00' R9)	(265.53' R9)
C25	3°04'57"	999.97'	53.80'	(3°04'57" R34)	(1000.00' R34)	(53.80' R34)
C26	14°37'27"	999.97'	255.23'	(14°37'27" R34)	(1000.00' R34)	(255.24' R34)
C27	14°37'27"	949.97'	242.47'	— — — —	— — — —	— — — —
C28	14°37'27"	939.97'	239.92'	— — — —	— — — —	— — — —
C29	10°06'31"	189.99'	33.52'	(10°06'25" R38)	(190.00' R38)	(33.52 R38)
C30	1°47'40"	539.98'	16.91'	(01°47'37" R1)	(540.00' R1)	(16.91' R1)
C31	28°04'50"	999.97'	490.09'	— — — —	— — — —	— — — —
C32	28°04'49"	999.97'	490.08'	— — — —	— — — —	— — — —
C33	0°41'54"	940.97'	11.47'	(00°41'25" R1)	(941.00' R1)	(11.34' R1)
C35	12°00'17"	949.97'	199.04'	(12°00'18" R1)	(950.00' R1)	(199.05' R1)
C36	3°04'09"	949.97'	50.89'	(03°04'09" R1)	(950.00' R1)	(50.89' R1)
C37	10°14'07"	940.97'	168.09'	(10°15'03" R1)	(941.00' R1)	(168.36' R1)
C40	10°13'19"	949.97'	169.48'	(10°13'33" R46)	(950.00' R46)	(169.55' R46)
C41	1°33'42"	943.97'	25.73'	(01°33'43" R46)	(944.00' CR46)	(25.73' R46)
C42	5°18'06"	949.97'	87.90'	(05°18'14" R45)	(950.00' R45)	(87.94' R45)
C43	3°38'52"	943.97'	60.10'	(03°39'02" R45)	(944.00' CR45)	(60.15' R45)

EASEMENT NOTES

- ① O.R. 2011–603896 GRANT DEED TO ORANGE COUNTY DATED 11/29/2011 (R30).
- ② RIGHT OF WAY FOR SLOPE PURPOSES PER INST. 13486/1458 O.R. (R18).
- ③ RIGHT OF WAY FOR SLOPE & DRAINAGE PURPOSES PER INST. 94–0389373 O.R. (R19).
- ④ PARCEL 2 OF GRANT DEED A 20.00' WIDE EASEMENT FOR ROAD PURPOSES RECORDED JANUARY 28, 1954 IN BOOK 2658, PAGE 580 (31).
- ⑤ 10.00' WIDE EASEMENT FOR ROAD PURPOSES RECORDED JULY 26, 1945 IN BOOK 1318, PAGE 525.
- ⑥ DEANE DEVELOPMENT CO., AND THE COUNTY OF ORANGE HOLDERS A 20.00' WIDE EASEMENT FOR UNDERGROUND SEWER, DRAINAGE, WATER AMD PUBLIC UTILITIES RECORDED JULY 3, 1979 IN BOOK 13215, PAGE 531 (R47).
- ⑦ RIGHT OF WAY FOR SLOPE PURPOSES PER INST. NO. 1990–143429 O.R. (R46).
- ⑧ RIGHT OF WAY FOR SLOPE PURPOSES PER INST. NO. 1991–021387 O.R. (R47).

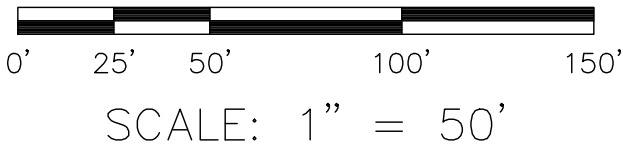
CURVE TABLE						
CURVE #	DELTA	RADIUS	LENGTH	RECORD DELTA	RECORD RADIUS	RECORD LENGTH
C44	5°55'09"	949.97'	98.14'	(05°55'17" R40)	(950.00' R40)	(98.18' R40)
C45	5°51'44"	949.97'	97.20'	(05°51'54" R40)	(950.00' R40)	(97.24' R40)
C46	4°11'02"	949.97'	69.37'	(04°10'27" R1)	(950.00' R1)	(69.21' R1)
C47	1°38'22"	949.97'	27.18'	(01°38'58" CR1)	(950.00' CR1)	(27.35' CR1)
C48	5°17'46"	949.97'	87.81'	(05°17'53" R40)	(950.00' R40)	(87.84' R40)
C49	5°36'08"	949.97'	92.89'	(05°36'17" R40)	(950.00' R40)	(92.93' R40)
C50	5°58'32"	949.97'	99.08'	(05°58'42" R40)	(950.00' R40)	(99.12' R40)
C51	6°09'43"	949.97'	102.17'	(06°09'51" R40)	(950.00' R40)	(102.21' R40)
C52	6°01'56"	949.97'	100.02'	(06°02'05" R40)	(950.00' R40)	(100.06' R40)
C53	5°53'22"	949.97'	97.65'	(05°58'48" R40)	(950.00' R40)	(97.69' R40)
C54	0°08'09"	949.97'	2.25'	(00°08'09" R40)	(950.00' R40)	(2.25' R40)

NOTES

STREET R/W SHOWN IN BOLD ESTABLISHED BY THIS SURVEY.
THE LOT LINES ARE FOR GRAPHICAL PRESENTATION ONLY.
RECORD DISTANCES SHOWN HERON ARE AS THEY APPEAR ON THE
DOCUMENT OF RECORD. DISTANCES MAY BE EITHER GRID OR GROUND,
AS PER SAID RECORD.
REFERENCE DOCUMENTS IN THE REFERENCE LEGEND ARE LIVE
HYPERLINKS TO SAID DOCUMENT.
MONUMENT SYMBOLS CONTAIN LIVE HYPERLINKS TO IMAGES, IF THEY
EXIST, OF RESPECTIVE MONUMENT.

LEGEND

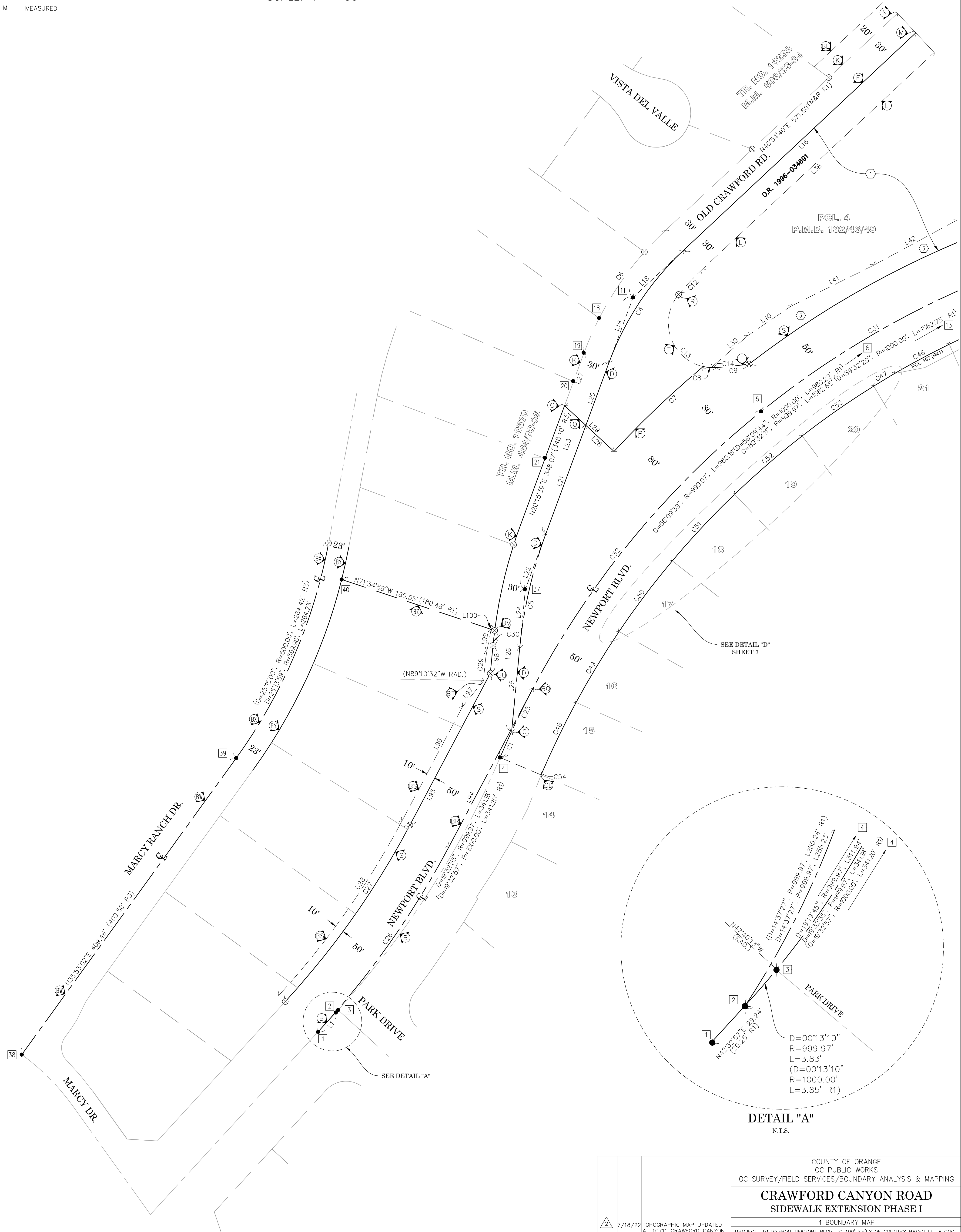
- FOUND MONUMENT AS NOTED
- ⊗ SEARCHED, NOTHING FOUND / S.N.F.
- CR CALC. FROM RECORD MAP
- R RECORD MAP
- M MEASURED





SEE SHEET 5

U.S. *Survey*
Foot

OC Public Works
OC Survey/Field Services
Boundary Analysis & Mapping



DETAIL "A"
N.T.S.

			COUNTY OF ORANGE OC PUBLIC WORKS OC SURVEY/FIELD SERVICES/BOUNDARY ANALYSIS & MAPPING		
CRAWFORD CANYON ROAD SIDEWALK EXTENSION PHASE I					
4 BOUNDARY MAP					
PROJECT LIMITS: FROM NEWPORT BLVD. TO 100' NE'LY OF COUNTRY HAVEN LN. ALONG CRAWFORD CANYON ROAD AND FROM 140' NE'LY OF HYDE PARK DR. TO CRAWFORD CANYON RD. ALONG NEWPORT BLVD.					
	7/18/22	TOPOGRAPHIC MAP UPDATED AT 10711 CRAWFORD CANYON ROAD DUE TO NEW HOME RENOVATION	DATE OF SURVEY: 07/08/2020		BY: J. RUSSO & PARTY
		9/01/21	ADDITIONAL RIGHT OF WAY AND EASEMENT ESTABLISHMENT S'LY OF THE CENTERLINE OF NEWPORT BOULEVARD	MAPPING	
MARK		DATE	ITEM	OFFICE CHECK	BY: M. KUBISTY, PLS
			FIELD CHECK	BY: J. RUSSO & PARTY	
REVISIONS			SCALE: 1"=50'	W.O. #E019817P	FILE #1920PW-IN0029
			FILE: CRAWFORD_CANYON_ROAD_SIDEWALK_EXTENSION_BOUNDARY_2022.DWG		

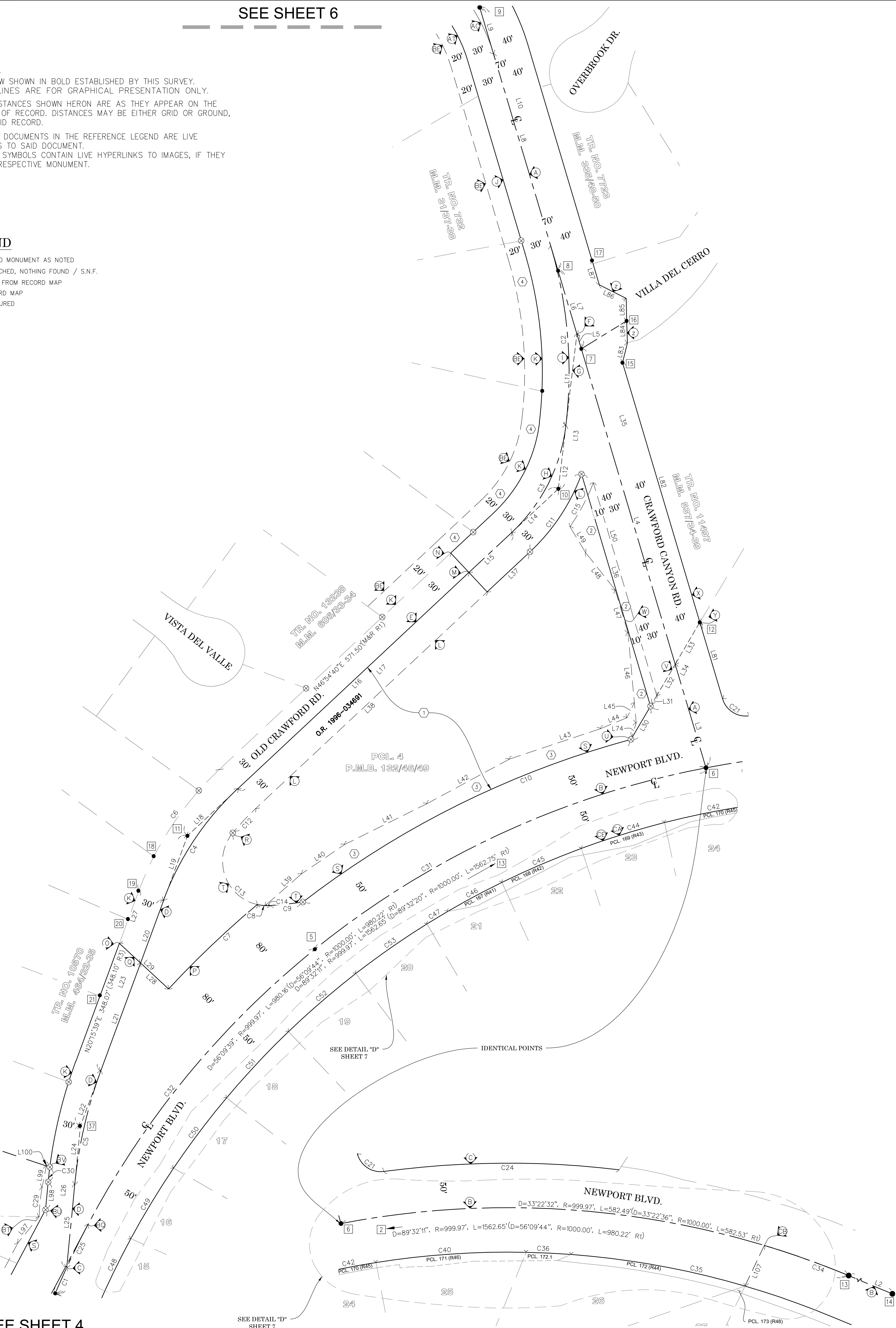
SEE SHEET 6

NOTES

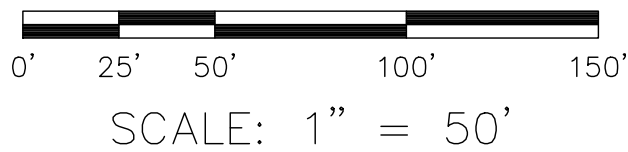
STREET R/W SHOWN IN BOLD ESTABLISHED BY THIS SURVEY.
THE LOT LINES ARE FOR GRAPHICAL PRESENTATION ONLY.
RECORD DISTANCES SHOWN HERON ARE AS THEY APPEAR ON THE
DOCUMENT OF RECORD. DISTANCES MAY BE EITHER GRID OR GROUND,
AS PER SAID RECORD.
REFERENCE DOCUMENTS IN THE REFERENCE LEGEND ARE LIVE
HYPERLINKS TO SAID DOCUMENT.
MONUMENT SYMBOLS CONTAIN LIVE HYPERLINKS TO IMAGES, IF THEY
EXIST, OF RESPECTIVE MONUMENT.

LEGEND

- FOUND MONUMENT AS NOTED
- ⊗ SEARCHED, NOTHING FOUND / S.N.F.
- CR CALC. FROM RECORD MAP
- R RECORD MAP
- M MEASURED



SEE SHEET 4



U.S. Survey Foot

OC Public Works
OC Survey/Field Services
Boundary Analysis & Mapping

			COUNTY OF ORANGE OC PUBLIC WORKS OC SURVEY/FIELD SERVICES/BOUNDARY ANALYSIS & MAPPING	
CRAWFORD CANYON ROAD SIDEWALK EXTENSION PHASE I				
5 BOUNDARY MAP				
PROJECT LIMITS: FROM NEWPORT BLVD. TO 100' NE'LY OF COUNTRY HAVEN LN. ALONG CRAWFORD CANYON ROAD AND FROM 140' NE'LY OF HYDE PARK DR. TO CRAWFORD CANYON RD. ALONG NEWPORT BLVD.				
<div>△</div>	7/18/22	TOPOGRAPHIC MAP UPDATED AT 10711 CRAWFORD CANYON ROAD DUE TO NEW HOME RENOVATION		
	9/01/21	ADDITIONAL RIGHT OF WAY AND EASEMENT ESTABLISHMENT S'LY OF THE CENTERLINE OF NEWPORT BOULEVARD		
	MARK	DATE	ITEM	
	REVISIONS			
		DATE OF SURVEY: 07/08/2020	BY: J. RUSSO & PARTY	SHEET NO. 5 of 12
		MAPPING	BY: H. AFIM	
		OFFICE CHECK	BY: M. KUBISTY, PLS	
		FIELD CHECK	BY: J. RUSSO & PARTY	
		SCALE: 1"=50'	W.O. #E019817P	
		FILE #1920PW-IN0029		
		FILE: CRAWFORD_CANYON_ROAD_SIDEWALK_EXTENSION_BOUNDARY_2022.DWG		

NOTES

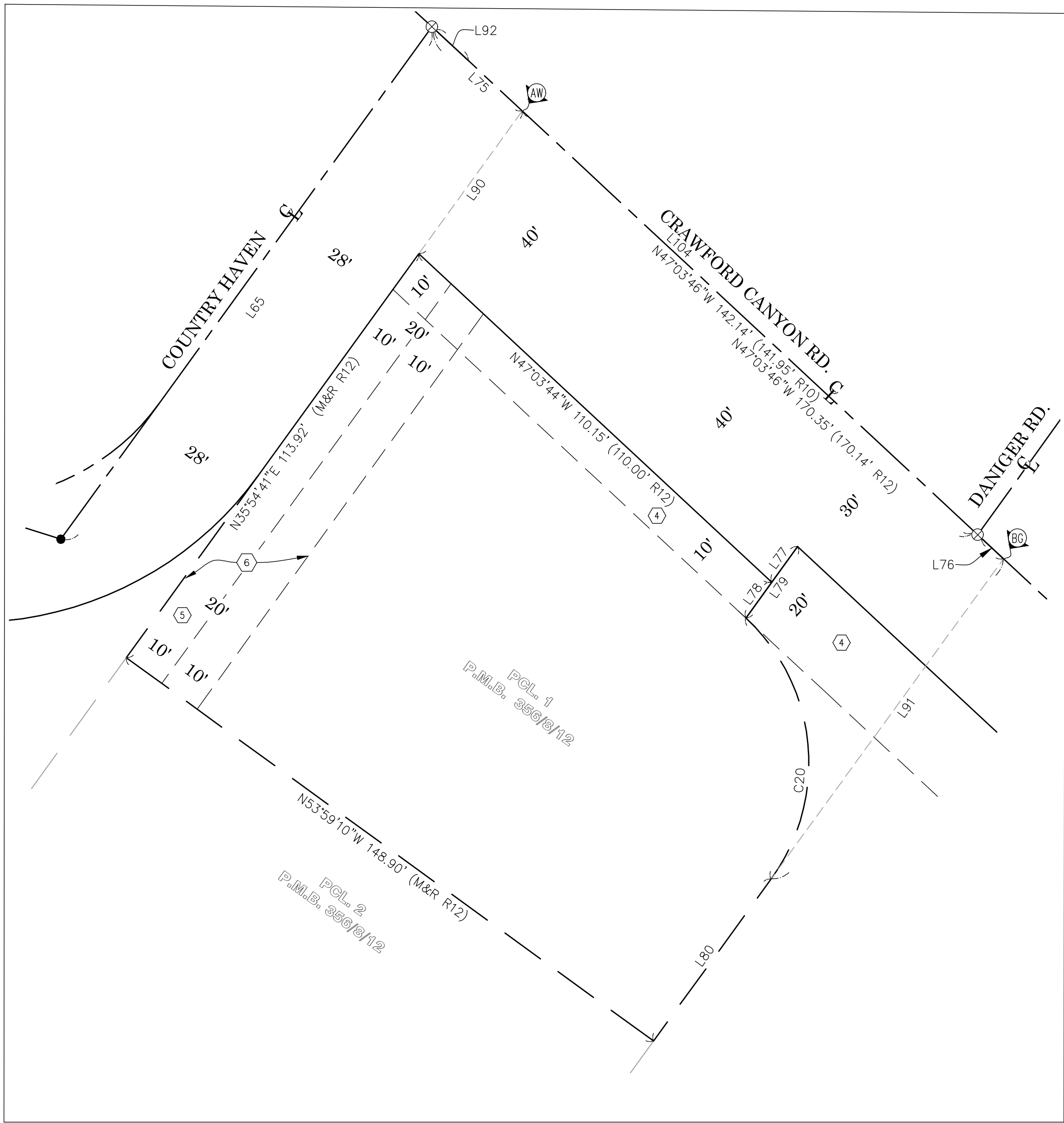
STREET R/W SHOWN IN BOLD ESTABLISHED BY THIS SURVEY.
THE LOT LINES ARE FOR GRAPHICAL PRESENTATION ONLY.
RECORD DISTANCES SHOWN HERON ARE AS THEY APPEAR ON THE DOCUMENT OF RECORD. DISTANCES MAY BE EITHER GRID OR GROUND, AS PER SAID RECORD.
REFERENCE DOCUMENTS IN THE REFERENCE LEGEND ARE LIVE HYPERLINKS TO SAID DOCUMENT.
MONUMENT SYMBOLS CONTAIN LIVE HYPERLINKS TO IMAGES, IF THEY EXIST, OF RESPECTIVE MONUMENT.

LEGEND

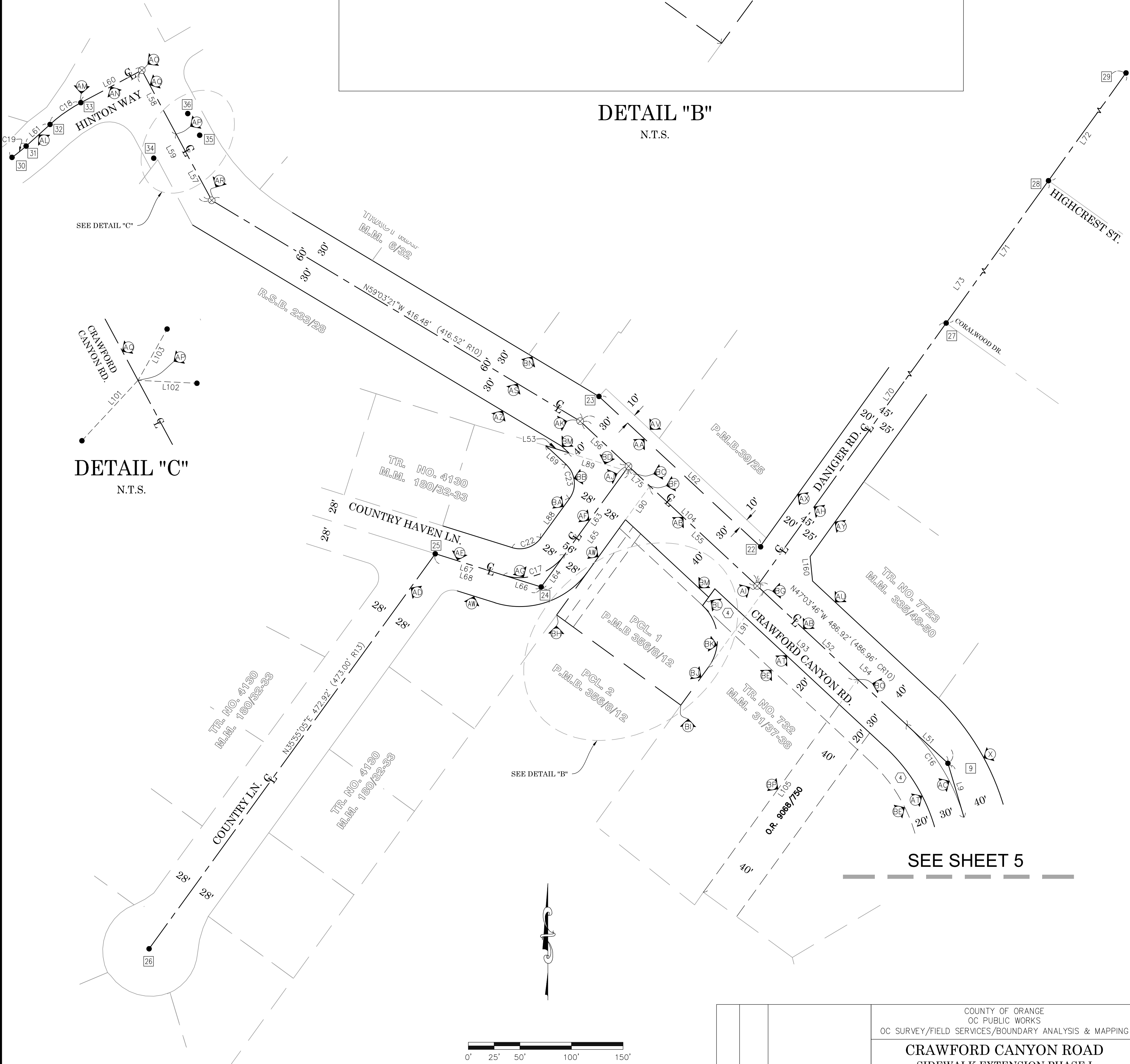
- FOUND MONUMENT AS NOTED
- ⊗ SEARCHED, NOTHING FOUND / S.N.F.
- CR CALC. FROM RECORD MAP
- R RECORD MAP
- M MEASURED

U.S. Survey Foot

OC Public Works
OC Survey/Field Services
Boundary Analysis & Mapping



DETAIL "B"
N.T.S.



SEE SHEET 5

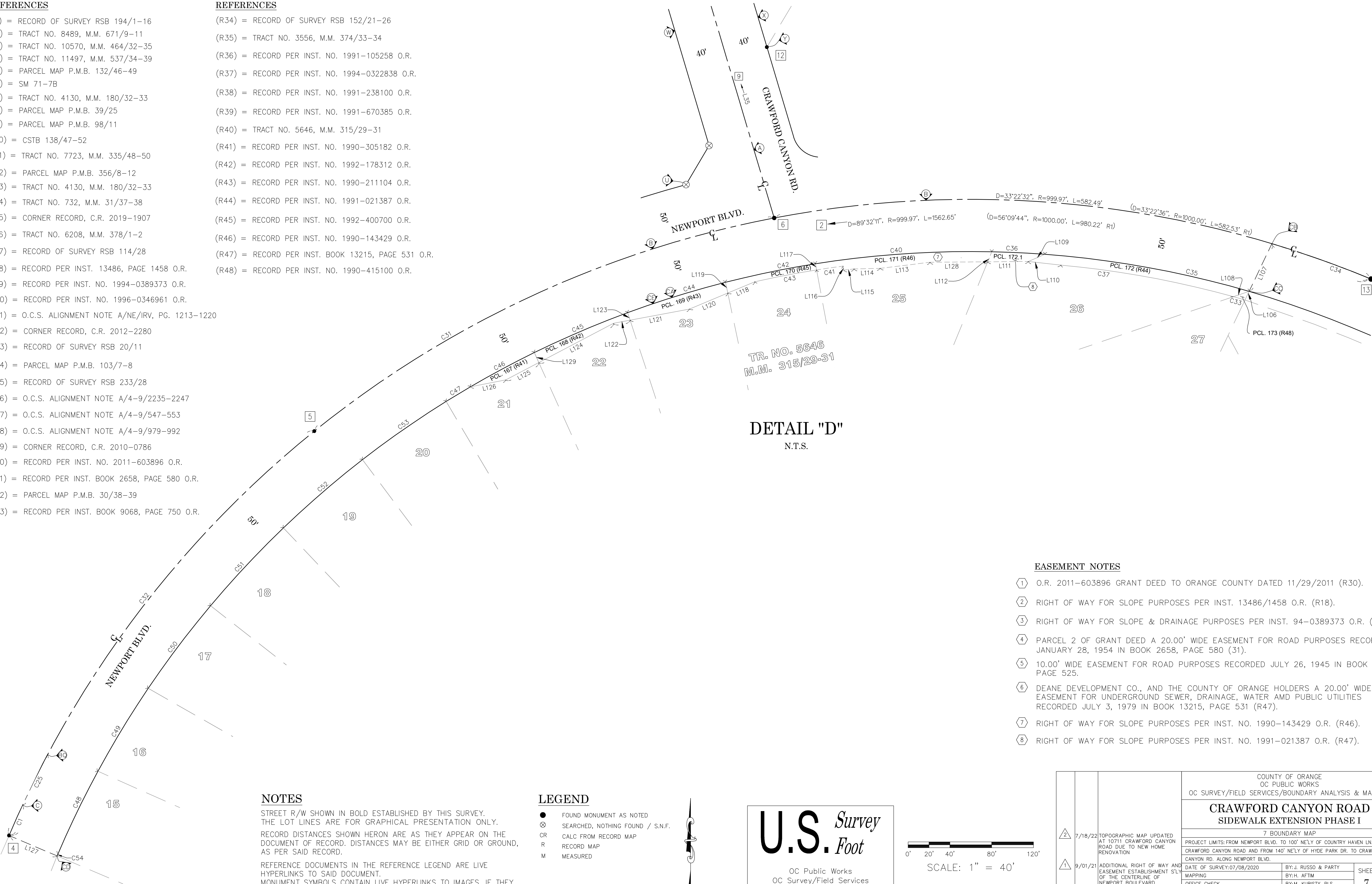
COUNTY OF ORANGE OC PUBLIC WORKS OC SURVEY/FIELD SERVICES/BOUNDARY ANALYSIS & MAPPING			CRAWFORD CANYON ROAD SIDEWALK EXTENSION PHASE I	
6 BOUNDARY MAP			PROJECT LIMITS: FROM NEWPORT BLVD. TO 100' NE'LY OF COUNTRY HAVEN LN. ALONG CRAWFORD CANYON ROAD AND FROM 140' NE'LY OF HYDE PARK DR. TO CRAWFORD CANYON RD. ALONG NEWPORT BLVD.	
7/18/22	TOPOGRAPHIC MAP UPDATED AT 10711 CRAWFORD CANYON ROAD DUE TO NEW HOME RENOVATION	DATE OF SURVEY: 07/08/2020	DATE OF SURVEY: 07/08/2020	BY: J. RUSSO & PARTY
			MAPPING	BY: H. AFIM
9/01/21	ADDITIONAL RIGHT OF WAY AND EASEMENT ESTABLISHMENT S'LY OF THE CENTERLINE OF NEWPORT BOULEVARD	DATE OF SURVEY: 07/08/2020	OFFICE CHECK	BY: M. KUBISTY, PLS
			FIELD CHECK	BY: J. RUSSO & PARTY
MARK	DATE	ITEM	SCALE: 1"=50'	W.O. #E019817P
REVISIONS			FILE: #1920PW-IN0029	FILE: CRAWFORD_CANYON_ROAD_SIDEWALK_EXTENSION_BOUNDARY_2022.DWG

REFERENCES

- (R1) = RECORD OF SURVEY RSB 194/1-16
(R2) = TRACT NO. 8489, M.M. 671/9-11
(R3) = TRACT NO. 10570, M.M. 464/32-35
(R4) = TRACT NO. 11497, M.M. 537/34-39
(R5) = PARCEL MAP P.M.B. 132/46-49
(R6) = SM 71-7B
(R7) = TRACT NO. 4130, M.M. 180/32-33
(R8) = PARCEL MAP P.M.B. 39/25
(R9) = PARCEL MAP P.M.B. 98/11
(R10) = CSTB 138/47-52
(R11) = TRACT NO. 7723, M.M. 335/48-50
(R12) = PARCEL MAP P.M.B. 356/8-12
(R13) = TRACT NO. 4130, M.M. 180/32-33
(R14) = TRACT NO. 732, M.M. 31/37-38
(R15) = CORNER RECORD, C.R. 2019-1907
(R16) = TRACT NO. 6208, M.M. 378/1-2
(R17) = RECORD OF SURVEY RSB 114/28
(R18) = RECORD PER INST. 13486, PAGE 1458 O.R.
(R19) = RECORD PER INST. NO. 1994-0389373 O.R.
(R20) = RECORD PER INST. NO. 1996-0346961 O.R.
(R21) = O.C.S. ALIGNMENT NOTE A/NE/IRV, PG. 1213-1220
(R22) = CORNER RECORD, C.R. 2012-2280
(R23) = RECORD OF SURVEY RSB 20/11
(R24) = PARCEL MAP P.M.B. 103/7-8
(R25) = RECORD OF SURVEY RSB 233/28
(R26) = O.C.S. ALIGNMENT NOTE A/4-9/2235-2247
(R27) = O.C.S. ALIGNMENT NOTE A/4-9/547-553
(R28) = O.C.S. ALIGNMENT NOTE A/4-9/979-992
(R29) = CORNER RECORD, C.R. 2010-0786
(R30) = RECORD PER INST. NO. 2011-603896 O.R.
(R31) = RECORD PER INST. BOOK 2658, PAGE 580 O.R.
(R32) = PARCEL MAP P.M.B. 30/38-39
(R33) = RECORD PER INST. BOOK 9068, PAGE 750 O.R.

REFERENCES

- (R34) = RECORD OF SURVEY RSB 152/21-26
(R35) = TRACT NO. 3556, M.M. 374/33-34
(R36) = RECORD PER INST. NO. 1991-105258 O.R.
(R37) = RECORD PER INST. NO. 1994-0322838 O.R.
(R38) = RECORD PER INST. NO. 1991-238100 O.R.
(R39) = RECORD PER INST. NO. 1991-670385 O.R.
(R40) = TRACT NO. 5646, M.M. 315/29-31
(R41) = RECORD PER INST. NO. 1990-305182 O.R.
(R42) = RECORD PER INST. NO. 1992-178312 O.R.
(R43) = RECORD PER INST. NO. 1990-211104 O.R.
(R44) = RECORD PER INST. NO. 1991-021387 O.R.
(R45) = RECORD PER INST. NO. 1992-400700 O.R.
(R46) = RECORD PER INST. NO. 1990-143429 O.R.
(R47) = RECORD PER INST. BOOK 13215, PAGE 531 O.R.
(R48) = RECORD PER INST. NO. 1990-415100 O.R.



DETAIL "D"
N.T.S.

EASEMENT NOTES

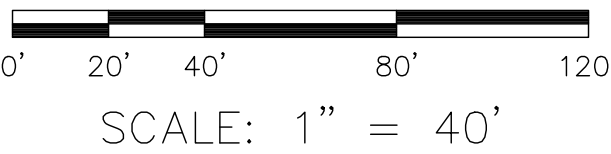
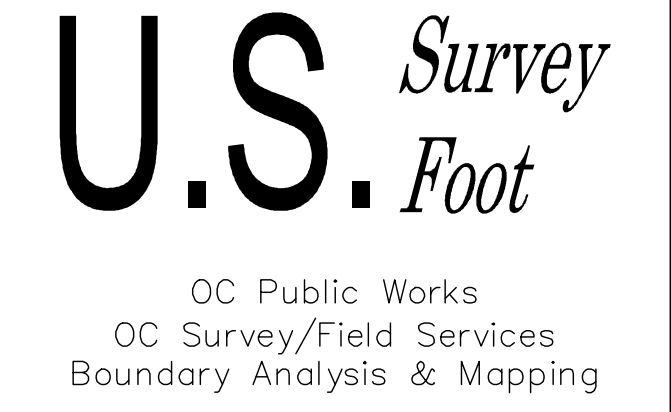
- ① O.R. 2011-603896 GRANT DEED TO ORANGE COUNTY DATED 11/29/2011 (R30).
② RIGHT OF WAY FOR SLOPE PURPOSES PER INST. 13486/1458 O.R. (R18).
③ RIGHT OF WAY FOR SLOPE & DRAINAGE PURPOSES PER INST. 94-0389373 O.R. (R19).
④ PARCEL 2 OF GRANT DEED A 20.00' WIDE EASEMENT FOR ROAD PURPOSES RECORDED JANUARY 28, 1954 IN BOOK 2658, PAGE 580 (31).
⑤ 10.00' WIDE EASEMENT FOR ROAD PURPOSES RECORDED JULY 26, 1945 IN BOOK 1318, PAGE 525.
⑥ DEANE DEVELOPMENT CO., AND THE COUNTY OF ORANGE HOLDERS A 20.00' WIDE EASEMENT FOR UNDERGROUND SEWER, DRAINAGE, WATER AND PUBLIC UTILITIES RECORDED JULY 3, 1979 IN BOOK 13215, PAGE 531 (R47).
⑦ RIGHT OF WAY FOR SLOPE PURPOSES PER INST. NO. 1990-143429 O.R. (R46).
⑧ RIGHT OF WAY FOR SLOPE PURPOSES PER INST. NO. 1991-021387 O.R. (R47).

NOTES

STREET R/W SHOWN IN BOLD ESTABLISHED BY THIS SURVEY.
THE LOT LINES ARE FOR GRAPHICAL PRESENTATION ONLY.
RECORD DISTANCES SHOWN HERON ARE AS THEY APPEAR ON THE DOCUMENT OF RECORD. DISTANCES MAY BE EITHER GRID OR GROUND, AS PER SAID RECORD.
REFERENCE DOCUMENTS IN THE REFERENCE LEGEND ARE LIVE HYPERLINKS TO SAID DOCUMENT.
MONUMENT SYMBOLS CONTAIN LIVE HYPERLINKS TO IMAGES, IF THEY EXIST, OF RESPECTIVE MONUMENT.

LEGEND

- FOUND MONUMENT AS NOTED
⊗ SEARCHED, NOTHING FOUND / S.N.F.
CR CALC FROM RECORD MAP
R RECORD MAP
M MEASURED



			COUNTY OF ORANGE OC PUBLIC WORKS OC SURVEY/FIELD SERVICES/BOUNDARY ANALYSIS & MAPPING				
			CRAWFORD CANYON ROAD SIDEWALK EXTENSION PHASE I				
			7 BOUNDARY MAP				
			PROJECT LIMITS: FROM NEWPORT BLVD. TO 100' NE'LY OF COUNTRY HAVEN LN. ALONG CRAWFORD CANYON ROAD AND FROM 140' NE'LY OF HYDE PARK DR. TO CRAWFORD CANYON RD. ALONG NEWPORT BLVD.				
<div>△</div>	7/18/22	TOPOGRAPHIC MAP UPDATED AT 10711 CRAWFORD CANYON ROAD DUE TO NEW HOME RENOVATION	DATE OF SURVEY: 07/08/2020		BY: J. RUSSO & PARTY	SHEET NO. <div>7</div> of <div>12</div>	
<div>△</div>	9/01/21	ADDITIONAL RIGHT OF WAY AND EASEMENT ESTABLISHMENT S'LY OF THE CENTERLINE OF NEWPORT BOULEVARD	MAPPING		BY: H. AFTIM		
MARK		DATE	ITEM		OFFICE CHECK		BY: M. KUBISTY, PLS
					FIELD CHECK		BY: J. RUSSO & PARTY
REVISIONS			SCALE: 1"= 40' W.O. #EQ19817P		FILE # 1920PW-IN0029		
			FILE: CRAWFORD_CANYON_ROAD_SIDEWALK_EXTENSION_BOUNDARY_2022.DWG				

SEE SHEET 8

12972
MARCY RANCH RD.

12992
MARCY RANCH RD.

13012
MARCY RANCH RD.

13026
MARCY RANCH RD.

13042
MARCY RANCH RD.

13062
MARCY RANCH RD.

CONC. FLOWLINE
EL.=347.06'

42"Ø CMP
INV=350.73'

42"Ø CMP
INV=349.81'

12"Ø CMP
INV=353.53'

12"Ø CMP
INV=352.12'

CP# 102
N: 2228556.50'
E: 6093866.17'
EL: 353.40'

HEADWALL
TW EL = 349.90'

HEADWALL
TW RT EL = 346.59'
TW LT EL = 346.63'
42"Ø CMP INV= 339.72'

NEWPORT BLVD.

10901 HARROGATE PL.

10921 HARROGATE PL.

LEGEND

SYMBOL

- Control Point
- Drop Inlet
- Fire Hydrant
- Gate, Double
- Gate, Single
- Grate Inlet
- Guy Wire Anchor
- Light Pole, Double
- Light Pole, Single
- Mailbox
- Manhole Electrical
- Manhole Sewer
- Manhole Storm Drain
- Manhole Telephone
- Meter Water
- Pedestrian Activator
- Pipe Inlet/Outlet
- Post
- Pull Box Cable TV
- Pull Box Electrical
- Pull Box Irrigation
- Pull Box Traffic
- Pull Box Undefined
- Tree

SYMBOL

- Tree, Palm
- Utility Pole w/ 1 Light
- Utility Pole w/ 2 Lights
- Utility Pole, Underground
- Utility Pole w/ 1 Light, Underground
- Utility Pole w/ 2 Lights, Underground
- Valve Gas
- Valve Water
- Vent Pipe
- Sprinkler

ABBREVIATION

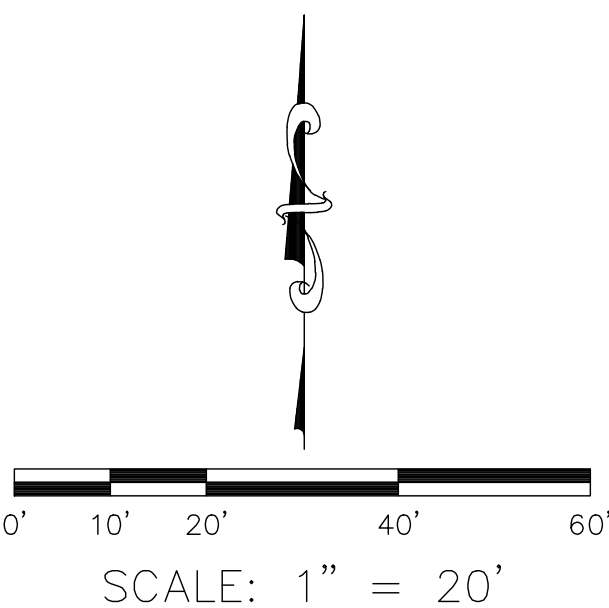
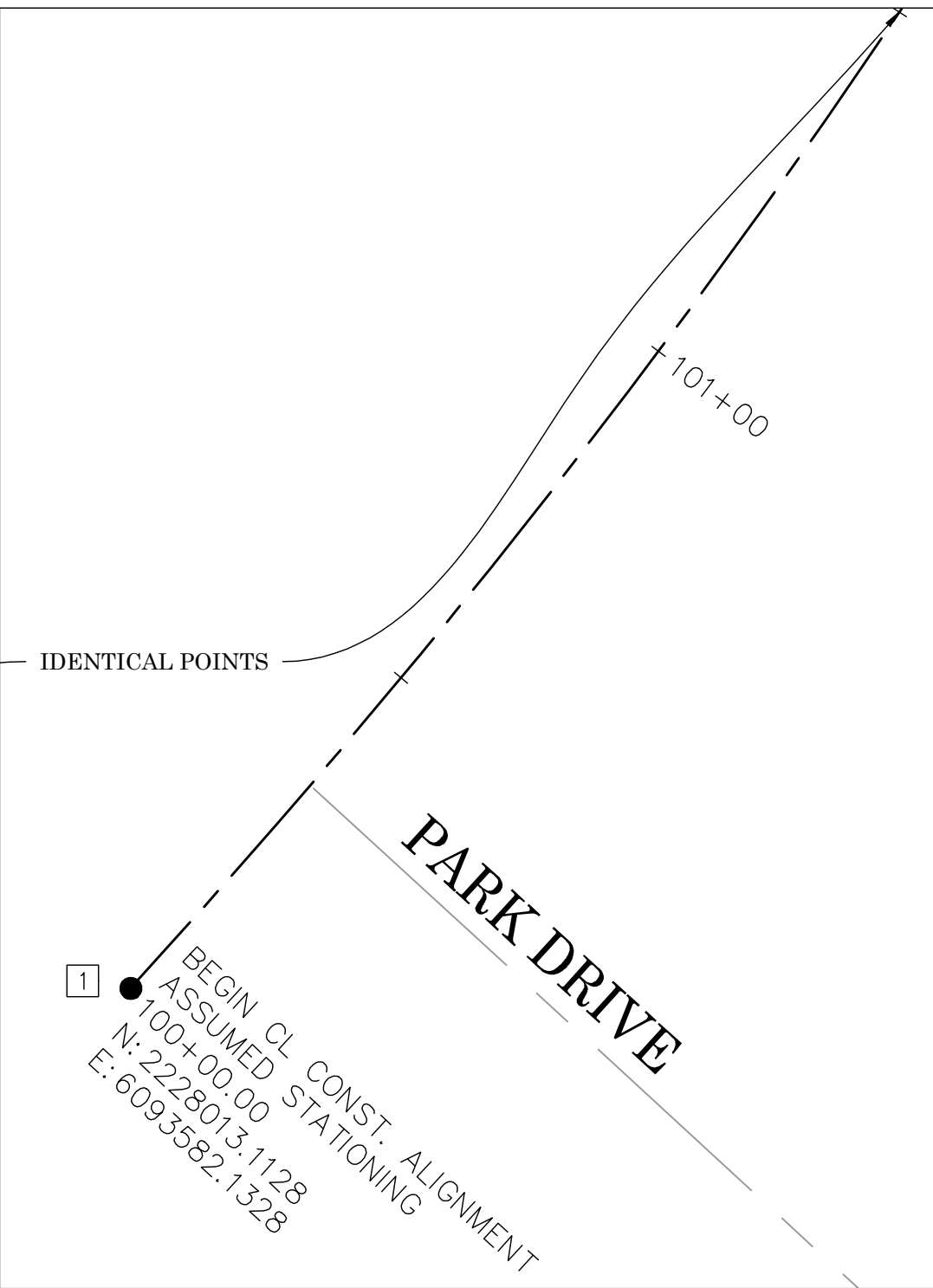
- | | |
|------|---------------|
| AC | Asphalt |
| CL | Centerline |
| CONC | Concrete |
| CP | Control Point |
| EL | Elevation |
| FL | Flowline |
| FD | Found |
| INV | Invert |
| PP | Power Pole |
| SS | Sewer |
| SD | Storm Drain |
| MH | Manhole |

LINE PATTERN KEY

- | | |
|--|--------------------------|
| | Block Wall |
| | Planter Brick |
| | Centerline |
| | Concrete Wall |
| | Edge of Concrete |
| | Edge of Asphalt Pavement |
| | Fence Chainlink |
| | Fence Plastic |
| | Flowline |
| | Grade Line |
| | Guard Rail |
| | Hinge Point |
| | Property Line |
| | Planter Stone |
| | Right of Way |
| | Stone Wall |
| | Striping |

AREA PATTERN KEY

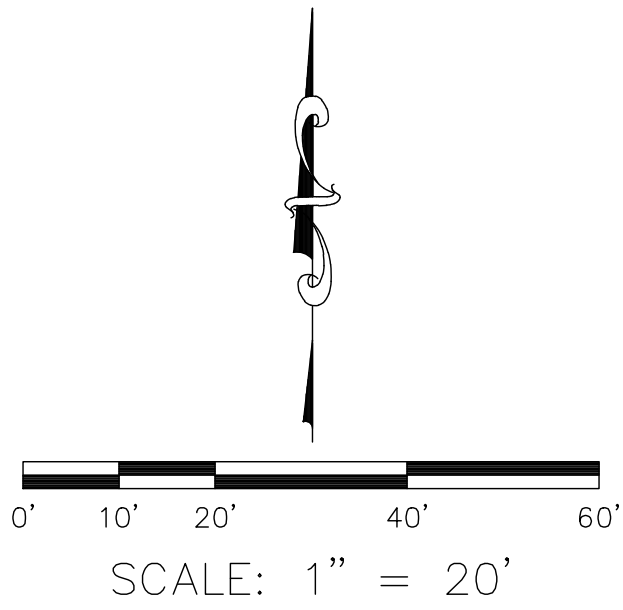
- | | |
|--|------------------|
| | Concrete |
| | Brick |
| | Dirt |
| | Grass |
| | Gravel / Rip Rap |



U.S. Survey
Foot

OC Public Works
OC Survey/Field Services
Boundary Analysis & Mapping

COUNTY OF ORANGE OC PUBLIC WORKS OC SURVEY/FIELD SERVICES/BOUNDARY ANALYSIS & MAPPING			CRAWFORD CANYON ROAD SIDEWALK EXTENSION PHASE I	
8 TOPO MAP			PROJECT LIMITS: FROM NEWPORT BLVD. TO 100' NE'LY OF COUNTRY HAVEN LN. ALONG CRAWFORD CANYON ROAD AND FROM 140' NE'LY OF HYDE PARK DR. TO CRAWFORD CANYON RD. ALONG NEWPORT BLVD.	
DATE OF SURVEY: 07/08/2020			DATE OF SURVEY: 07/08/2020	
MAPPING			BY: J. RUSSO & PARTY	
OFFICE CHECK			BY: H. AFIM	
FIELD CHECK			BY: M. KUBISTY, PLS	
SCALE: N.T.S.			BY: J. RUSSO & PARTY	
W.O. #E019817P			FILE #1920PW-IN0029	
FILE: CRAWFORD CANYON ROAD_SIDEWALK EXTENSION_TOPO_2022.DWG			SHEET NO. 8 of 12	



MATCH LINE
SEE SHEET 9

LEGEND

SYMBOL

- Control Point
- Drop Inlet
- Fire Hydrant
- Gate, Double
- Gate, Single
- Grate Inlet
- Guy Wire Anchor
- Light Pole, Double
- Light Pole, Single
- Mailbox
- Manhole Electrical
- Manhole Sewer
- Manhole Storm Drain
- Manhole Telephone
- Meter Water
- Pedestrian Activator
- Pipe Inlet/Outlet
- Post
- Pull Box Cable TV
- Pull Box Electrical
- Pull Box Irrigation
- Pull Box Traffic
- Pull Box Undefined
- Tree

SYMBOL

- Tree, Palm
- Utility Pole w/ 1 Light
- Utility Pole w/ 2 Lights
- Utility Pole, Underground
- Utility Pole w/ 1 Light, Underground
- Utility Pole w/ 2 Lights, Underground
- Valve Gas
- Valve Water
- Vent Pipe
- Sprinkler

ABBREVIATION

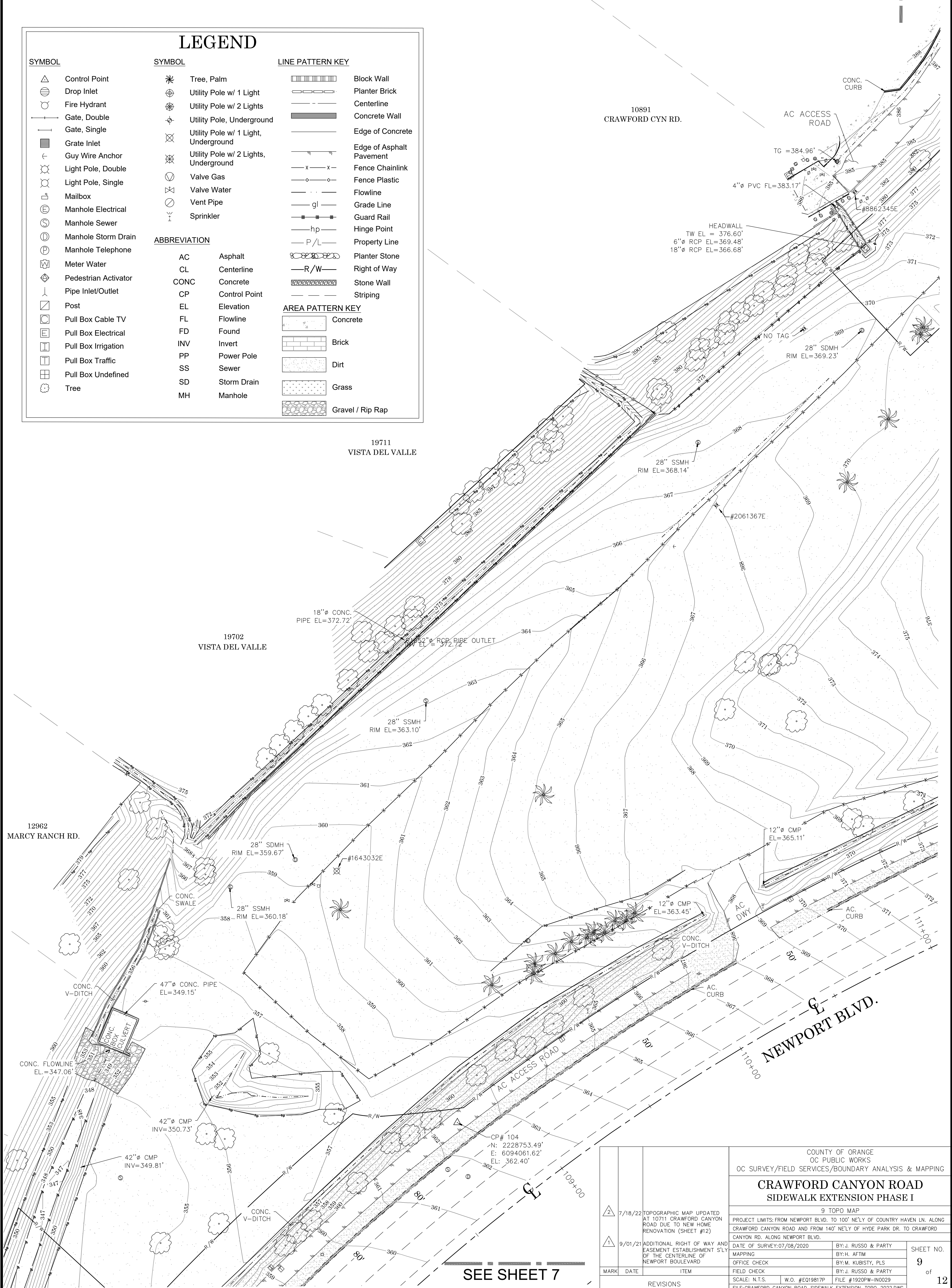
- AC Asphalt
- CL Centerline
- CONC Concrete
- CP Control Point
- EL Elevation
- FL Flowline
- FD Found
- INV Invert
- PP Power Pole
- SS Sewer
- SD Storm Drain
- MH Manhole

LINE PATTERN KEY



- Block Wall
- Planter Brick
- Centerline
- Concrete Wall
- Edge of Concrete
- Edge of Asphalt Pavement
- Fence Chainlink
- Fence Plastic
- Flowline
- Grade Line
- Guard Rail
- Hinge Point
- Property Line
- Planter Stone
- R/W Right of Way
- Stone Wall
- Striping

AREA PATTERN KEY

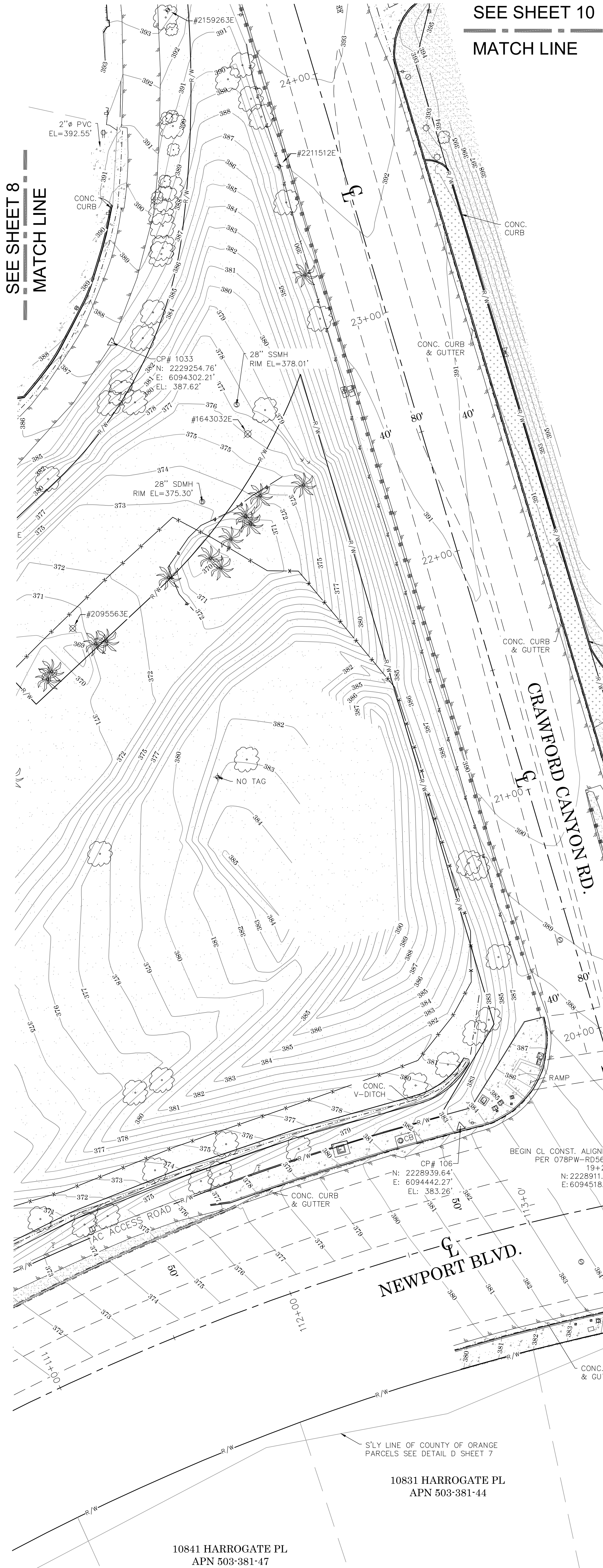
- Concrete
- Brick
- Dirt
- Grass
- Gravel / Rip Rap



SEE SHEET 7

		COUNTY OF ORANGE OC PUBLIC WORKS OC SURVEY/FIELD SERVICES/BOUNDARY ANALYSIS & MAPPING				
		CRAWFORD CANYON ROAD SIDEWALK EXTENSION PHASE I				
		9 TOPO MAP				
		PROJECT LIMITS: FROM NEWPORT BLVD. TO 100' NE'LY OF COUNTRY HAVEN LN. ALONG CRAWFORD CANYON ROAD AND FROM 140' NE'LY OF HYDE PARK DR. TO CRAWFORD CANYON RD. ALONG NEWPORT BLVD.				
	7/18/22	TOPOGRAPHIC MAP UPDATED AT 10711 CRAWFORD CANYON ROAD DUE TO NEW HOME RENOVATION (SHEET #12)		DATE OF SURVEY: 07/08/2020	BY: J. RUSSO & PARTY	SHEET NO. 9 of 12
				MAPPING	BY: H. AFIM	
	9/01/21	ADDITIONAL RIGHT OF WAY AND EASEMENT ESTABLISHMENT S'LY OF THE CENTERLINE OF NEWPORT BOULEVARD		OFFICE CHECK	BY: M. KUBISTY, PLS	
				FIELD CHECK	BY: J. RUSSO & PARTY	
MARK	DATE	ITEM	SCALE: N.T.S.	W.O. #E019817P	FILE #1920PW-IN0029	
REVISIONS			FILE: CRAWFORD_CANYON_ROAD_SIDEWALK	EXTENSION_TOPO_2022.DWG		

SEE SHEET 8
MATCH LINE



SEE SHEET 10
MATCH LINE

LEGEND

SYMBOL

- Control Point
- Drop Inlet
- Fire Hydrant
- Gate, Double
- Gate, Single
- Grate Inlet
- Guy Wire Anchor
- Light Pole, Double
- Light Pole, Single
- Mailbox
- Manhole Electrical
- Manhole Sewer
- Manhole Storm Drain
- Manhole Telephone
- Meter Water
- Pedestrian Activator
- Pipe Inlet/Outlet
- Post
- Pull Box Cable TV
- Pull Box Electrical
- Pull Box Irrigation
- Pull Box Traffic
- Pull Box Undefined
- Tree

SYMBOL

- Tree, Palm
- Utility Pole w/ 1 Light
- Utility Pole w/ 2 Lights
- Utility Pole, Underground
- Utility Pole w/ 1 Light, Underground
- Utility Pole w/ 2 Lights, Underground
- Valve Gas
- Valve Water
- Vent Pipe
- Sprinkler

ABBREVIATION

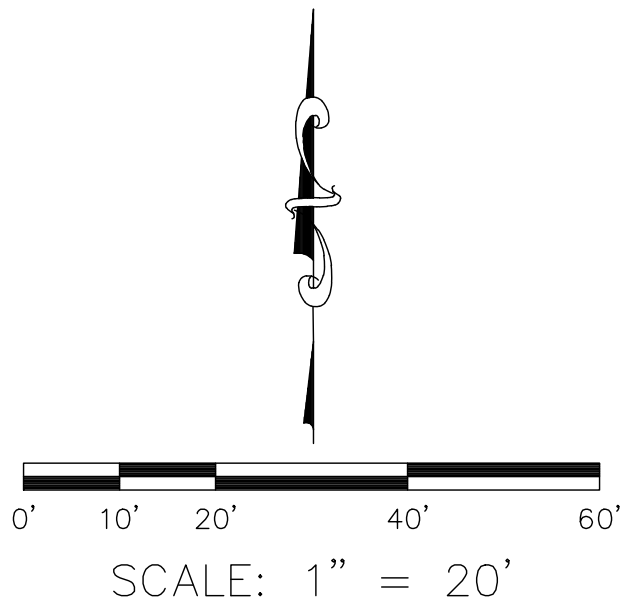
- | | |
|------|---------------|
| AC | Asphalt |
| CL | Centerline |
| CONC | Concrete |
| CP | Control Point |
| EL | Elevation |
| FL | Flowline |
| FD | Found |
| INV | Invert |
| PP | Power Pole |
| SS | Sewer |
| SD | Storm Drain |
| MH | Manhole |

LINE PATTERN KEY

- | |
|--------------------------|
| Block Wall |
| Planter Brick |
| Centerline |
| Concrete Wall |
| Edge of Concrete |
| Edge of Asphalt Pavement |
| Fence Chainlink |
| Fence Plastic |
| Flowline |
| Grade Line |
| Guard Rail |
| Hinge Point |
| Property Line |
| Planter Stone |
| Right of Way |
| Stone Wall |
| Striping |

AREA PATTERN KEY

- | |
|------------------|
| Concrete |
| Brick |
| Dirt |
| Grass |
| Gravel / Rip Rap |



U.S. Survey
Foot

OC Public Works
OC Survey/Field Services
Boundary Analysis & Mapping

			COUNTY OF ORANGE OC PUBLIC WORKS OC SURVEY/FIELD SERVICES/BOUNDARY ANALYSIS & MAPPING	
CRAWFORD CANYON ROAD SIDEWALK EXTENSION PHASE I				
10 TOPO MAP				
PROJECT LIMITS: FROM NEWPORT BLVD. TO 100' NE'LY OF COUNTRY HAVEN LN. ALONG CRAWFORD CANYON ROAD AND FROM 140' NE'LY OF HYDE PARK DR. TO CRAWFORD CANYON RD. ALONG NEWPORT BLVD.				
DATE OF SURVEY: 07/08/2020		BY: J. RUSSO & PARTY		SHEET NO. 10 of 12
MAPPING		BY: H. AFIM		
OFFICE CHECK		BY: M. KUBISTY, PLS		
FIELD CHECK		BY: J. RUSSO & PARTY		
SCALE: N.T.S.		W.O. #E019817P		FILE #1920PW-IN0029
FILE: CRAWFORD_CANYON_ROAD_SIDEWALK_EXTENSION_TOPO_2022.DWG				
REVISIONS				

<div>2</div>	7/18/22	TOPOGRAPHIC MAP UPDATED AT 10711 CRAWFORD CANYON ROAD DUE TO NEW HOME RENOVATION (SHEET #12)
<div>1</div>	9/01/21	ADDITIONAL RIGHT OF WAY AND EASEMENT ESTABLISHMENT S'LY OF THE CENTERLINE OF NEWPORT BOULEVARD
MARK	DATE	ITEM

SEE SHEET 11
MATCH LINE

LEGEND

SYMBOL

- Control Point
- Drop Inlet
- Fire Hydrant
- Gate, Double
- Gate, Single
- Grate Inlet
- Guy Wire Anchor
- Light Pole, Double
- Light Pole, Single
- Mailbox
- Manhole Electrical
- Manhole Sewer
- Manhole Storm Drain
- Manhole Telephone
- Meter Water
- Pedestrian Activator
- Pipe Inlet/Outlet
- Post
- Pull Box Cable TV
- Pull Box Electrical
- Pull Box Irrigation
- Pull Box Traffic
- Pull Box Undefined
- Tree

SYMBOL

- Tree, Palm
- Utility Pole w/ 1 Light
- Utility Pole w/ 2 Lights
- Utility Pole, Underground
- Utility Pole w/ 1 Light, Underground
- Utility Pole w/ 2 Lights, Underground
- Valve Gas
- Valve Water
- Vent Pipe
- Sprinkler

ABBREVIATION

- AC Asphalt
- CL Centerline
- CONC Concrete
- CP Control Point
- EL Elevation
- FL Flowline
- FD Found
- INV Invert
- PP Power Pole
- SS Sewer
- SD Storm Drain
- MH Manhole

LINE PATTERN KEY

- Block Wall
- Planter Brick
- Centerline
- Concrete Wall
- Edge of Concrete
- Edge of Asphalt Pavement
- Fence Chainlink
- Fence Plastic
- Flowline
- Grade Line
- Guard Rail
- Hinge Point
- Property Line
- Planter Stone
- Right of Way
- Stone Wall
- Striping

AREA PATTERN KEY

- Concrete
- Brick
- Dirt
- Grass
- Gravel / Rip Rap

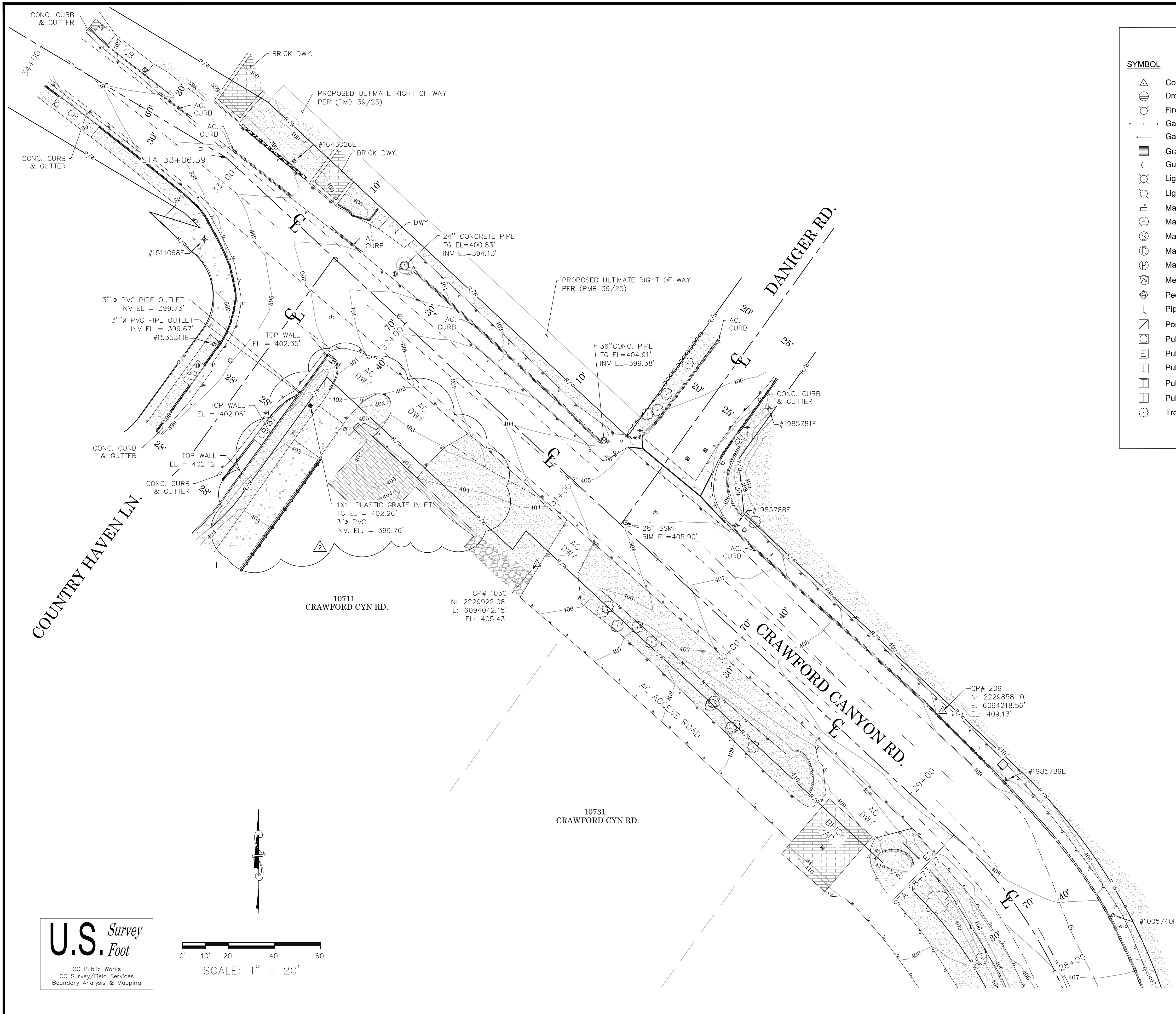
SCALE: 1" = 20'

U.S. Survey
Foot
OC Public Works
OC Survey/Field Services
Boundary Analysis & Mapping

MATCH LINE
SEE SHEET 9

MATCH LINE
SEE SHEET 8

		COUNTY OF ORANGE OC PUBLIC WORKS OC SURVEY/FIELD SERVICES/BOUNDARY ANALYSIS & MAPPING	
CRAWFORD CANYON ROAD SIDEWALK EXTENSION PHASE I			
11 TOPO MAP			
PROJECT LIMITS: FROM NEWPORT BLVD. TO 100' NE'LY OF COUNTRY HAVEN LN. ALONG CRAWFORD CANYON ROAD AND FROM 140' NE'LY OF HYDE PARK DR. TO CRAWFORD CANYON RD. ALONG NEWPORT BLVD.			
DATE OF SURVEY: 07/08/2020		BY: J. RUSSO & PARTY	
MAPPING		BY: H. AFIM	
OFFICE CHECK		BY: M. KUBISTY, PLS	
FIELD CHECK		BY: J. RUSSO & PARTY	
SCALE: 1" = 20'		W.O. #E019817P	
FILE: CRAWFORD_CANYON_ROAD_SIDEWALK		FILE: #1920PW-IN0029	
EXTENSION_TOPO_2022.DWG			
MARK	DATE	ITEM	
REVISIONS			
2	7/18/22	TOPOGRAPHIC MAP UPDATED AT 10711 CRAWFORD CANYON ROAD DUE TO NEW HOME RENOVATION (SHEET #12)	
1	9/01/21	ADDITIONAL RIGHT OF WAY AND EASEMENT ESTABLISHMENT S'LY OF THE CENTERLINE OF NEWPORT BOULEVARD	
		SHEET NO.	11 of 12



LEGEND

SYMBOL

- Control Point
- Drop Inlet
- Fire Hydrant
- Gate, Double
- Gate, Single
- Grate Inlet
- Guy Wire Anchor
- Light Pole, Double
- Light Pole, Single
- Mailbox
- Manhole Electrical
- Manhole Sewer
- Manhole Storm Drain
- Manhole Telephone
- Meter Water
- Pedestrian Activator
- Pipe Inlet/Outlet
- Post
- Pull Box Cable TV
- Pull Box Electrical
- Pull Box Irrigation
- Pull Box Traffic
- Pull Box Undefined
- Tree

SYMBOL

- Tree, Palm
- Utility Pole w/ 1 Light
- Utility Pole w/ 2 Lights
- Utility Pole, Underground
- Utility Pole w/ 1 Light, Underground
- Utility Pole w/ 2 Lights, Underground
- Valve Gas
- Valve Water
- Vent Pipe
- Sprinkler

ABBREVIATION

AC	Asphalt
CL	Centerline
CONC	Concrete
CP	Control Point
EL	Elevation
FL	Flowline
FD	Found
INV	Invert
PP	Power Pole
SS	Sewer
SD	Storm Drain
MH	Manhole

LINE PATTERN KEY

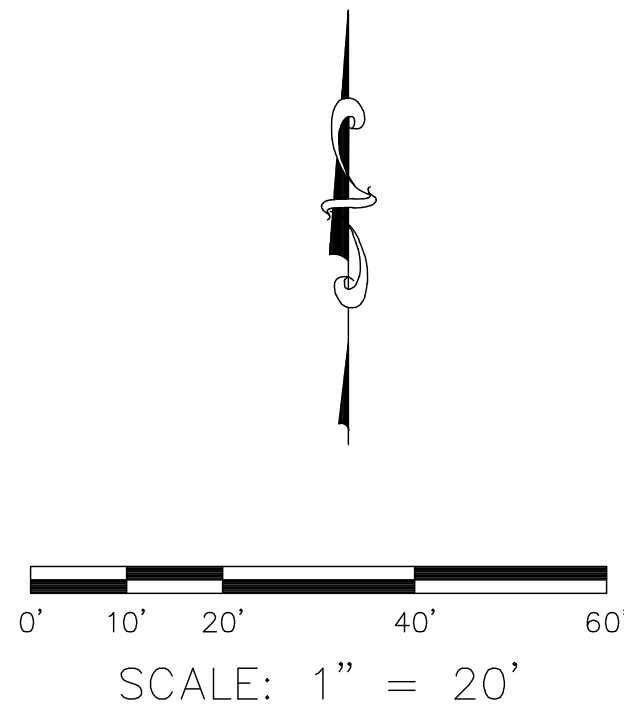
- Block Wall
- Planter Brick
- Centerline
- Concrete Wall
- Edge of Concrete
- Edge of Asphalt Pavement
- Fence Chainlink
- Fence Plastic
- Flowline
- Grade Line
- Guard Rail
- Hinge Point
- Property Line
- Planter Stone
- Right of Way
- Stone Wall
- Striping

AREA PATTERN KEY

- Concrete
- Brick
- Dirt
- Grass
- Gravel / Rip Rap

MATCH LINE
SEE SHEET 10

U.S. Survey
Foot
OC Public Works
OC Survey/Field Services
Boundary Analysis & Mapping



		COUNTY OF ORANGE OC PUBLIC WORKS OC SURVEY/FIELD SERVICES/BOUNDARY ANALYSIS & MAPPING	
		CRAWFORD CANYON ROAD SIDEWALK EXTENSION PHASE I	
		TOPOGRAPHIC MAP	
		PROJECT LIMITS: FROM NEWPORT BLVD. TO 100' NE'LY OF COUNTRY HAVEN LN. ALONG CRAWFORD CANYON ROAD AND FROM 140' NE'LY OF HYDE PARK DR. TO CRAWFORD CANYON RD. ALONG NEWPORT BLVD.	
2	7/18/22	TOPOGRAPHIC MAP UPDATED AT 10711 CRAWFORD CANYON ROAD DUE TO NEW HOME RENOVATION (SHEET #12)	DATE OF SURVEY: 07/08/2020
	9/01/21	ADDITIONAL RIGHT OF WAY AND EASEMENT ESTABLISHMENT S'LY OF THE CENTERLINE OF NEWPORT BOULEVARD	BY: J. RUSSO & PARTY
			BY: H. AFTIM
			BY: M. KUBISTY, PLS
MARK	DATE	ITEM	FIELD CHECK
		REVISIONS	SCALE: 1" = 20' W.O. #E019817P FILE #1920PW-IN0029 FILE: CRAWFORD_CANYON_ROAD_SIDEWALK_EXTENSION_TOPO_2022.DWG
			SHEET NO. 12 of 12