

FILED

8-27-68
W. E. ST JOHN, County Clerk

RESOLUTION OF THE BOARD OF SUPERVISORS
OF ORANGE COUNTY, CALIFORNIA

August 27, 1968

On motion of Supervisor Hirstein, duly seconded and carried, the following Resolution was adopted:

WHEREAS, a portion of Newport Avenue, as shown and described in Exhibits "A" and "B", attached hereto and made a part hereof, has been superseded by relocation; and

WHEREAS, the abandonment of said portion of Newport Avenue will not cut off the access of any person.

NOW THEREFORE, BE IT RESOLVED AND ORDERED that the portion of Newport Avenue, as shown and described in Exhibits "A" and "B", attached hereto and made a part hereof, is hereby summarily abandoned pursuant to Sections 960.1 and 960.2 of the Streets and Highways Code.

RECORDED AT REQUEST OF COUNTY CLERK
IN OFFICIAL RECORDS OF ORANGE COUNTY, CALIF.
SEP 10 1968
J. WYLIE CARLYLE, County Recorder

FREE
C4

AYES: SUPERVISORS WM. HIRSTEIN, WILLIAM J. PHILLIPS, DAVID L. BAKER, ALTON E. ALLEN, AND C.M. FEATHERLY

NOES: SUPERVISORS NONE

ABSENT: SUPERVISORS NONE

STATE OF CALIFORNIA }
COUNTY OF ORANGE } ss.

I, W. E. ST JOHN, County Clerk and ex-officio Clerk of the Board of Supervisors of Orange County, California, hereby certify that the above and foregoing Resolution was duly and regularly adopted by the said Board at a regular meeting thereof held on the 27th day of August, 1968, and passed by a unanimous vote of said Board

IN WITNESS WHEREOF, I have hereunto set my hand and seal this 27th day of August, 1968.

W. E. ST JOHN
County Clerk and ex-officio Clerk
of the Board of Supervisors of
Orange County, California

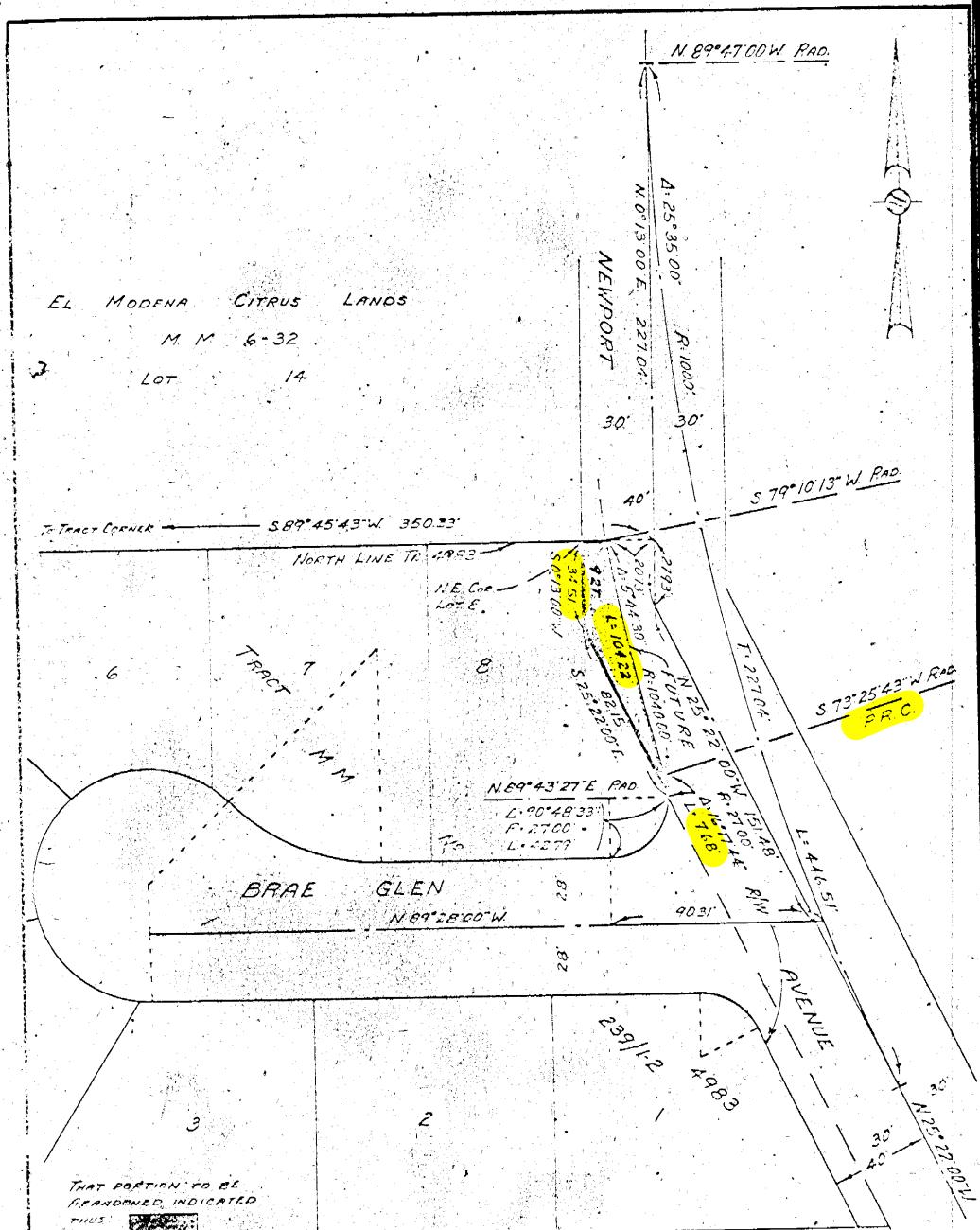
Resolution No. 68-919
Abandonment of Portion of
Newport Avenue

By Michael L. Hirstein
Deputy

KW:ls

OFFICE OF
COUNTY COUNSEL
ORANGE COUNTY

800-8715 • 928



BASES OF BEARINGS:

THE CENTER LINE OF NEWPORT AVENUE (N 89°47'00\"/>

THIS IS NOT A SURVEY OF THE LAND, BUT IS COMPILED FROM DATA AS SHOWN BY OFFICIAL RECORDS AND SURVEY DATA ON FILE IN THE OFFICE OF THE ORANGE COUNTY SURVEYOR.

ABANDONMENT MAP

REABANDONMENT
OF
NEWPORT AVENUE
NORTH OF
BRAE GLEN

1\"/>

8-8-46

ABANDONMENT
NEWPORT AVENUE
DATE: 8-8-68

That portion of Newport Avenue as shown on a map of Tract No. 4983 recorded in Book 239, Pages 1 and 2 of Miscellaneous Maps, Records of Orange County, California, bounded Westerly by the Easterly line of Lot 8 of said Tract No. 4983, bounded Northerly by the Northerly line of said Tract No. 4983 and bounded Easterly by the future right of way line of Newport Avenue as shown on said map of Tract No. 4983.

Reserving and excepting from this abandonment an easement or easements and right to maintain, operate, replace, remove and renew all now existing sanitary sewers and storm drains and appurtenant structures in, upon and over the said highway and all portions thereof, and pursuant to any existing franchise or renewal thereof to maintain, operate, replace, remove, renew and enlarge all now existing lines of pipe, conduits, cables, wires, poles, and other convenient structures, equipment and fixtures for the operation of gas pipe lines, telegraphic and telephone lines, railroad lines, and for the transportation or distribution of electric energy, petroleum and its products, ammonia, water, and for incidental purposes.

APPROVED AS TO DESCRIPTION

ALLEN S. KOCH

COUNTY SURVEYOR & BOARD COMMISSIONER

By: *Robert V. Vorse*
Deputy County Surveyor

Exhibit A