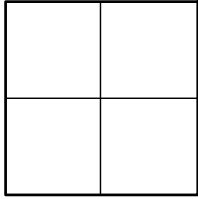


CORNER RECORD

Agency Index _____

Document Number _____

CR 2021-2778

City of UNINCORPORATED TERRITORYCounty of ORANGE, CaliforniaBrief Legal Description ALONG SAYLOR TERRACE: AT THE CUL-DE-SAC RADIUS POINT, +/- 305' W'LY OF CRAWFORD CANYON RD**CORNER TYPE**

- | | |
|--|---|
| <input type="checkbox"/> Government Corner | <input type="checkbox"/> Control |
| <input type="checkbox"/> Meander | <input type="checkbox"/> Property |
| <input type="checkbox"/> Rancho | <input checked="" type="checkbox"/> Other |

Date of Survey 08-16-2021**COORDINATES (Optional)**

N. _____ E. _____

Elevation _____

Units Metric ☐ U.S. Survey Foot ☒

Horizontal Datum _____

Zone _____ Epoch Date _____

Vertical Datum _____

☐ Complies with Public Resources Code §§8801-8819☐ Complies with Public Resources Code §§8890-8902PLS Act Ref: ☐ 8765(d)☒ 8771☐ 8773☐ Other: _____Corner/ ☒ Left as found☐ Established☐ Rebuilt☒ Pre-ConstructionMonument: ☐ Found and tagged☐ Reestablished☒ Referenced☐ Post-Construction

Narrative of corner identified and monument as found, set, reset, replaced, or removed:

☒ See sheet #2 for description (s):

NO CLAIM IS MADE AS TO THE RELATIONSHIP OF THE POINTS SHOWN HEREON TO TRUE BOUNDARY LOCATIONS. RIGHT OF WAY, PARCEL, OR LOT LINES, OR ANY OTHER DATA RELATED TO DELINEATION OF PROPERTY RIGHTS ARE DISPLAYED FOR GRAPHICAL REPRESENTATION ONLY.

BEARINGS SHOWN HEREON ARE ASSUMED AND ARE DISPLAYED FOR ANGULAR RELATIONSHIP ONLY.

MEASURED DISTANCES SHOWN HEREON ARE GRID DISTANCES, DERIVED BY INVERSE FROM POSITIONS ESTABLISHED BY A FULLY REDUNDANT LEAST SQUARES NETWORK ADJUSTMENT. ALL POINTS WERE EITHER TRAVERSED THROUGH OR DOUBLE DETERMINED, PER CHAPTERS 5 & 11 OF THE OC SURVEY STANDARDS MANUAL. TO OBTAIN A GROUND DISTANCE, MULTIPLY A GRID DISTANCE BY 1.00002734.

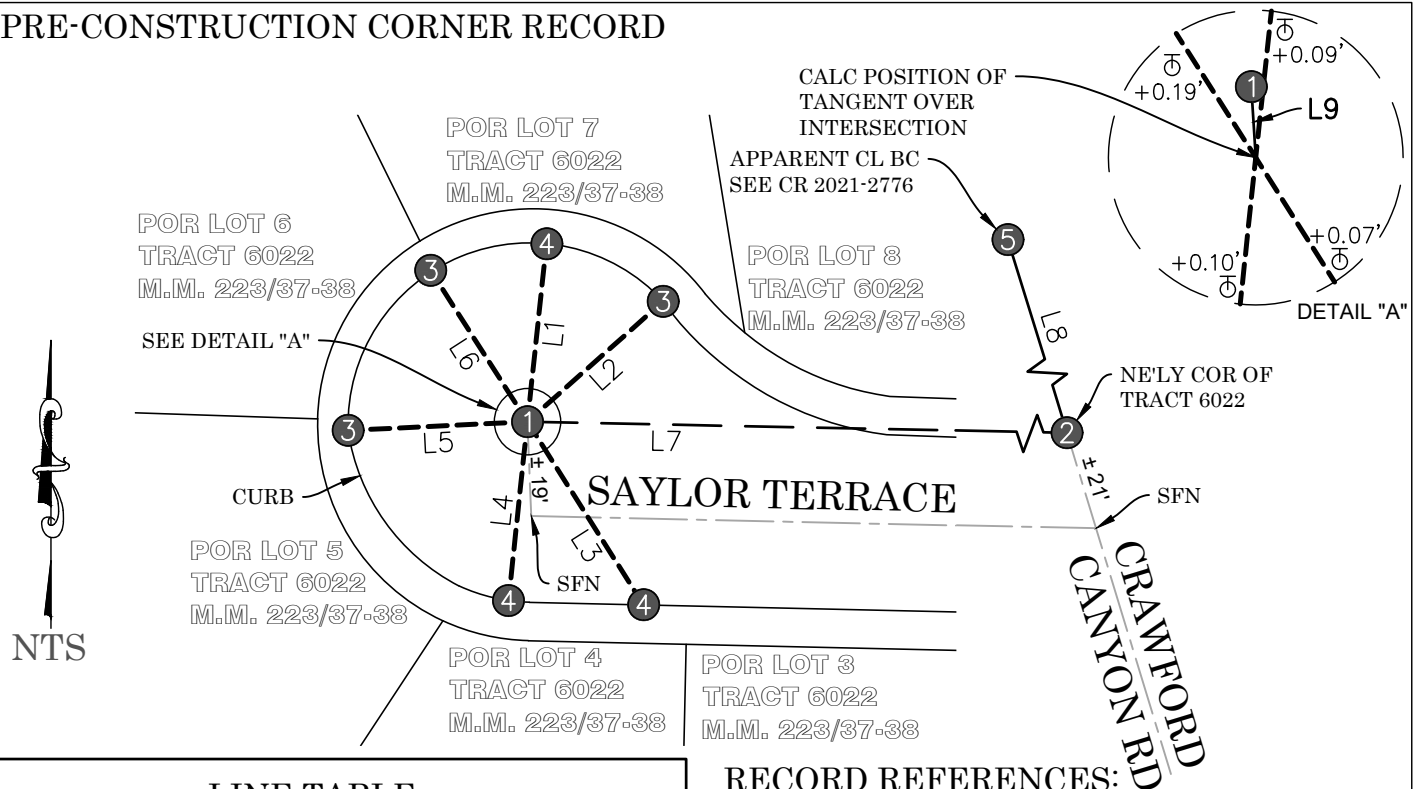
RECORD DISTANCES SHOWN HEREON ARE AS THEY APPEAR ON THE DOCUMENT OF RECORD. DISTANCES MAY BE EITHER GRID OR GROUND, AS PER SAID RECORD. ALL DISTANCES WERE FIELD VERIFIED USING ELECTRONIC DISTANCE MEASUREMENTS.

SURVEYOR'S STATEMENT

This Corner Record was prepared by me or under my direction in conformance with

the Professional Land Surveyors' Act on 3-9-2022Signed Jesom Moreno (P.L.S.) or R.C.E. No. 8478**COUNTY SURVEYOR'S STATEMENT**This Corner Record was received MARCH 9, 2022and examined and filed MARCH 24, 2022Signed Kevin R. Hills (P.L.S.) or R.C.E. No. 6617Title COUNTY SURVEYOR

County Surveyor's Comment _____

PRE-CONSTRUCTION CORNER RECORD**LINE TABLE**

LINE #	MEASURED BEARING	MEASURED DISTANCE	RECORD DISTANCE	REF
L1	N06°07'25"E	37.23'	37.33'	R5
L2	N48°26'30"E	37.79'	37.70' 37.74'	R1 R2
L3	N32°21'53"W	45.07'	44.84'	R5
L4	N06°02'03"E	37.46'	37.21' 37.17'	R2 R5
L5	N87°13'38"E	37.42'	37.42' 37.50'	R1 R2
L6	N32°37'49"W	37.42'	37.42' 37.39'	R1 R2 & R5
L7	N88°50'02"W	295.78'	N/A	N/A
L8	N24°42'37"W	587.40'	*587.26'	R3 & R4
L9	N02°41'48"W	0.19'	N/A	N/A

* CALC PER DATA SHOWN ON R3 & R4

RECORD REFERENCES:

R1 OCS A/4-9/765-767 (PG 767)
 R2 OCS A/4-9/1721-1766 (PG 1765)
 R3 TRACT 6022, MM 223/37-38
 R4 TRACT 4983, MM 239/1-2
 R5 MONUMENT RECORD GPS 3181

Ø TANGENT OVER PER R5; VALUE SHOWN IS
 CALC DIST MINUS RECORD DIST

LEGEND:

FOUND

LEGEND:

— — — REF LINE 1: APPARENT CENTERLINE
 - - - REF LINE 2: TIE LINES
 — — — REF LINE 3: MEAS BETWEEN MONUMENTS
 OCS ORANGE COUNTY SURVEYOR

MONUMENT NOTES:

- ① FD SPIKE & 1-1/4" BR WSHR STMPD "OCS", FLUSH IN AC, NO REF; DOES NOT FIT RECORD SWING TIES PER R1 OR R2, OR RECORD T.O. TIES PER R5; BECAUSE A SUITABLE POSITION COULD NOT BE DETERMINED FROM RECORD TIES, THE MONUMENT WILL NO BE RESET POST-CONSTRUCTION
- ② FD MON WELL W/ 1" IP & 3/4" BR TAG (ILLEG, ACCEPTED AS TAG "LS 2911"), PER R3, DN 1.3'
- ③ FD LEAD & TACK ON TOP OF CONC CURB, PER R1
- ④ FD LEAD & 3/4" BR TAG STMPD "OCS TIE" ON TOP OF CONC CURB, PER R5
- ⑤ FD MONUMENT AS DESCRIBED ON ADJACENT CORNER RECORD