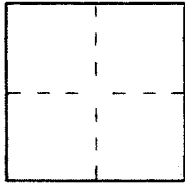


CORNER RECORD

Document Number 2011 - 1629BCity of ORANGECounty of ORANGE, CaliforniaBrief Legal Description CHAPMAN AVENUE & CRAWFORD CANYON ROAD

CORNER TYPE

Government Corner ☐ Control ☐
Meander ☐ Property ☐
Rancho ☐ Other ☒

Date of Survey 02/07/11

COORDINATES (Optional)

N. _____
E. _____
Zone _____ NAD27 ☐ NAD83 ☐
NAD83 Epoch _____
Elev. _____
Vert. Datum: NGVD29 ☐ NAVD88 ☐
Meas. Units: Metric ☐ Imperial ☐
U.S. Survey foot ☐

Corner — Left as found ☐ Found and tagged ☐ Established ☐ Reestablished ☒ Rebuilt ☐

Identification and type of corner found; Evidence used to identify or procedure used to establish or reestablish the corner:

FOUND AS DESCRIBED ON THE REVERSE OF THIS SHEET

A description of the physical condition of the monument as found and as set or reset: _____

THESE TIES ARE FOR THE PURPOSE OF PERPETUATING THE FOUND MONUMENTATION. NO CLAIM IS MADE AS TO THE
RELATIONSHIP OF THE POINTS OR LINES SHOWN HEREON TO TRUE BOUNDARY LOCATION.

SURVEYOR'S STATEMENT

This Corner Record was prepared by me or under my direction in conformance with
the Land Surveyor's Act on 11th March 2011

Signed Mark D. HardyL.S. or R.C.E. No. 5440

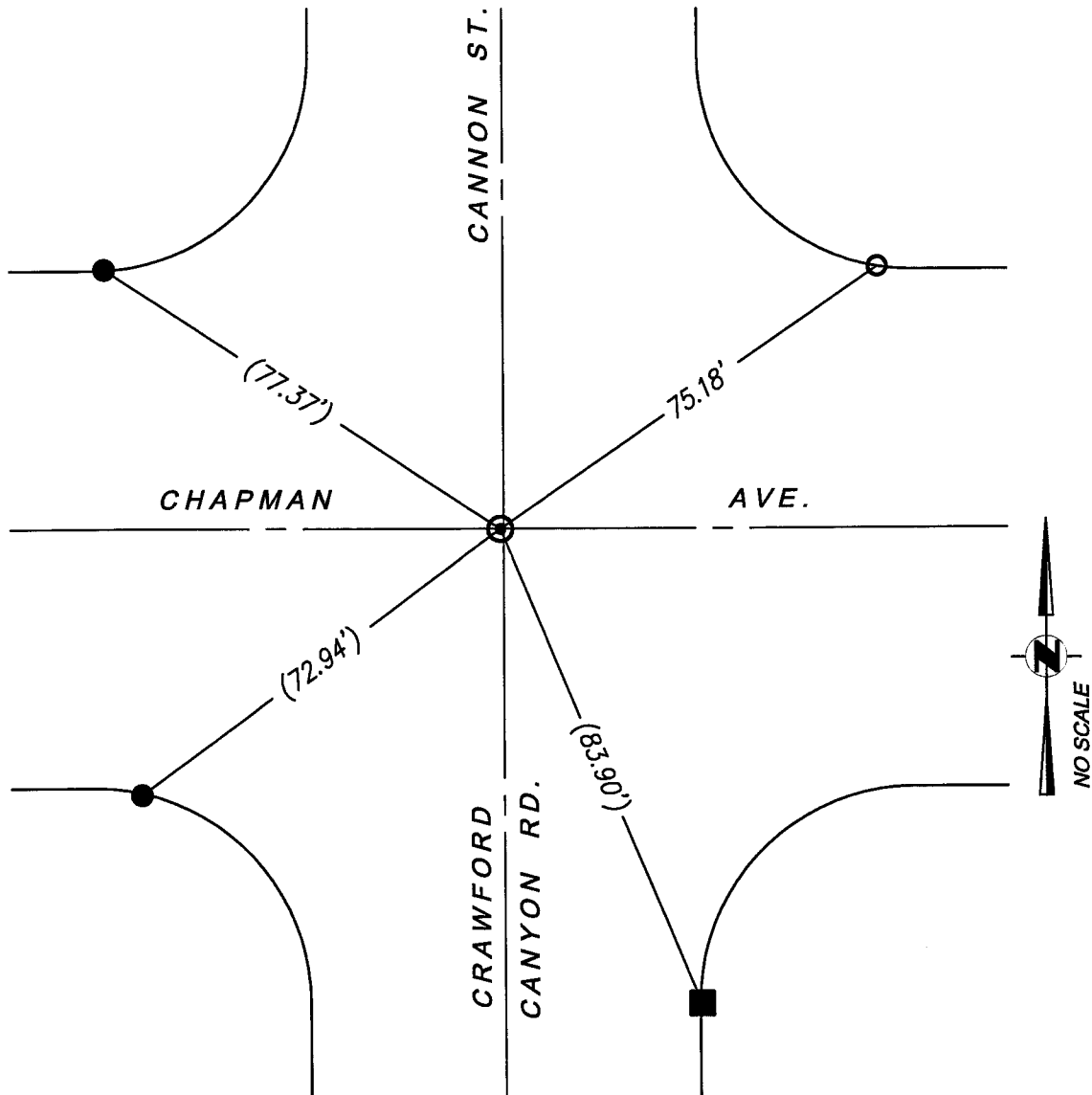
COUNTY SURVEYOR'S STATEMENT

This Corner Record was received JUL 19 2011and examined and filed AUG 04 2011Signed Craig S. WehrmanL.S. or R.C.E. No. 6131Title DEPUTY COUNTY SURVEYOR

County Surveyor's Comment _____

R-1 = CO. OF ORANGE CR 2011-0999A

() = REC. & MEAS. DIST. PER R-1



- = SET L&TACK W/TAG MKD LS 5440 IN T.C.
- ⊙ = FD NOTHING, SET S&W W TAG MKD LS 5440 FLUSH PER TIES ON R-1 AFTER CONSTRUCTION
- = FD L&T W/TAG "LS 4212" IN T.C. PER R-1
- = FD CHIS "+" PER R-1, SET L&TACK W/TAG "LS 5440"