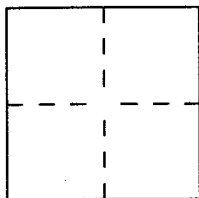


CORNER RECORD

Document Number 2012-2271City of Uninc. County (Panorama Heights) County of Orange, CaliforniaBrief Legal Description Centerline of Crawford Canyon Road

CORNER TYPE

Government Corner ☐ Control ☐
Meander ☐ Property ☐
Rancho ☐ Other ☒

Date of Survey JUNE 11, 2012

COORDINATES (Optional)

N. _____
E. _____
Zone _____ NAD27 ☐ NAD83 ☐
NAD83 Epoch _____
Elev. _____
Vert. Datum: NGVD29 ☐ NAVD88 ☐
Meas. Units: Metric ☐ Imperial ☐
U.S. Survey foot ☐

Corner — Left as found ☒ Found and tagged ☐ Established ☐ Reestablished ☐ Rebuilt ☐

Identification and type of corner found; Evidence used to identify or procedure used to establish or reestablish the corner:
SEE REVERSE

A description of the physical condition of the monument as found and as set or reset:
SEE REVERSE

SURVEYOR'S STATEMENT

This Corner Record was prepared by me or under my direction in conformance with
the Land Surveyor's Act on JUNE 12, 2012

Signed [Signature] L.S. or R.C.E. No. 7177



COUNTY SURVEYOR'S STATEMENT

This Corner Record was received JUL 10 2012

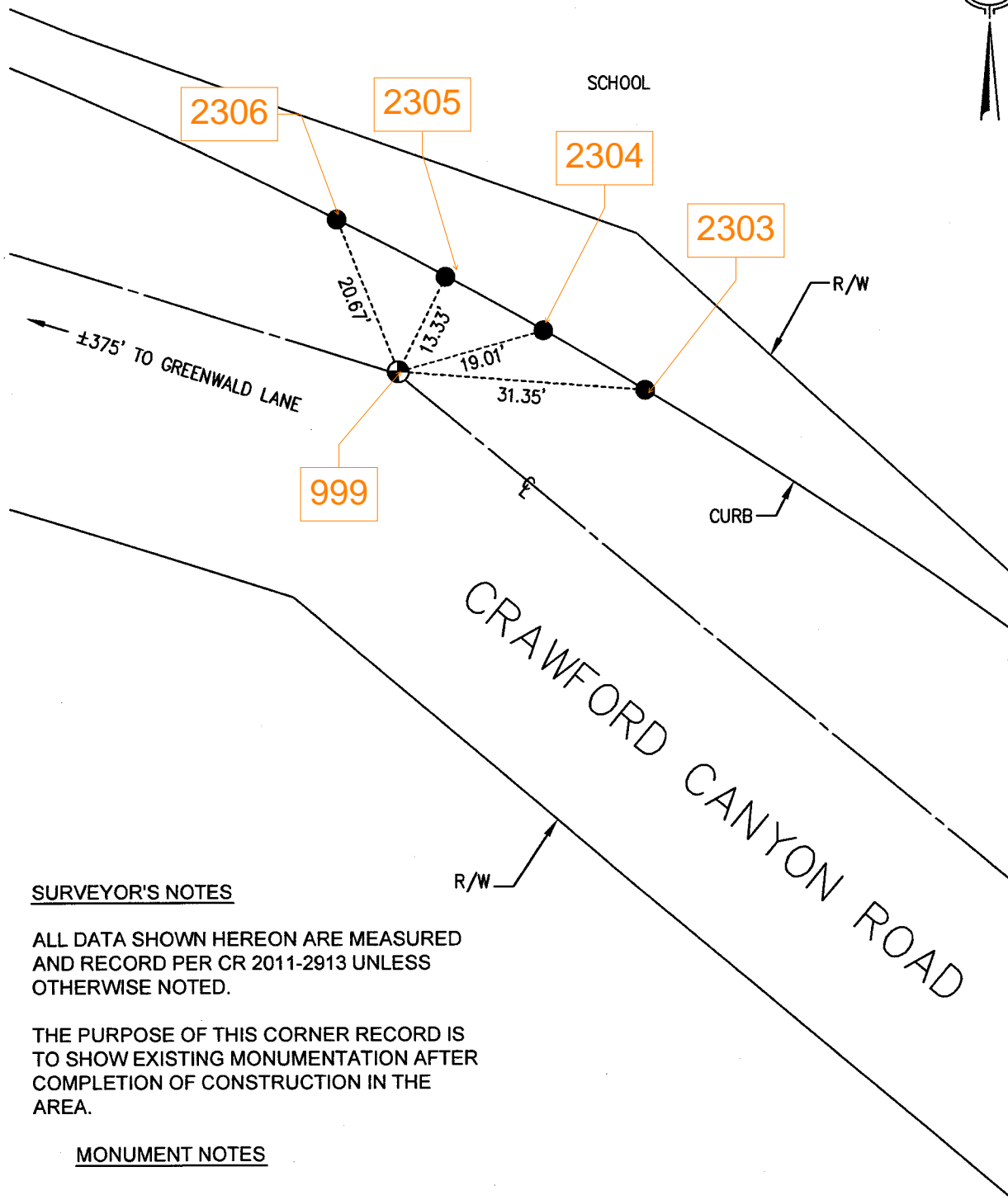
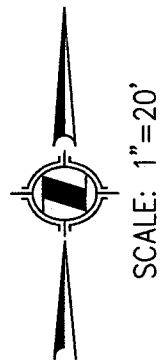
and examined and filed AUG 07 2012

Signed [Signature] L.S. or R.C.E. No. 6131

Title [Signature]



County Surveyor's Comment _____



SURVEYOR'S NOTES

ALL DATA SHOWN HEREON ARE MEASURED AND RECORD PER CR 2011-2913 UNLESS OTHERWISE NOTED.

THE PURPOSE OF THIS CORNER RECORD IS TO SHOW EXISTING MONUMENTATION AFTER COMPLETION OF CONSTRUCTION IN THE AREA.

MONUMENT NOTES

- FOUND SPIKE & WASHER PER CR 2011-2913.
- FOUND L&T WITH O.C.S. TIE TAG PER CR 2011-2913